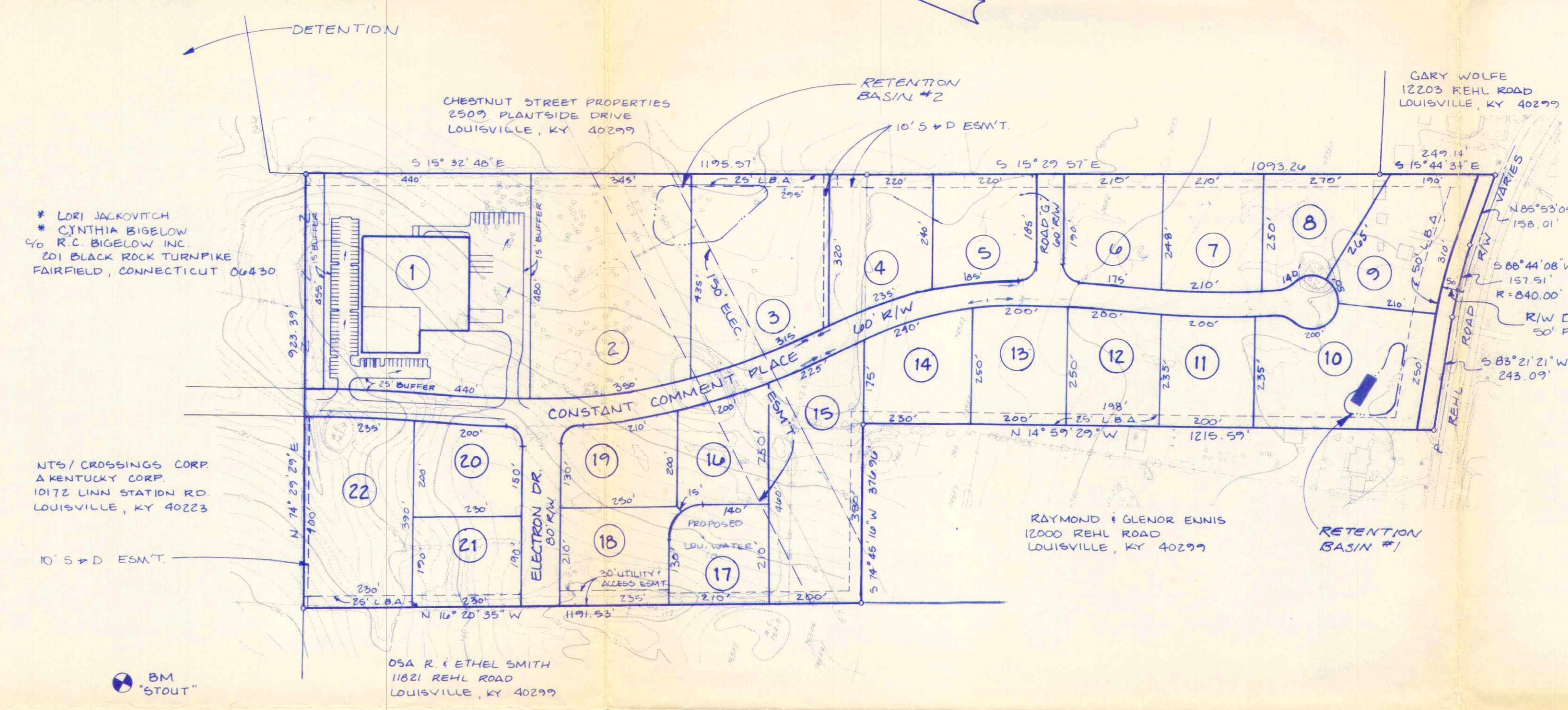


LOCATION MAP
NO SCALE



DATA

GROSS AREA	40.64 ACRES
NET AREA	36.43 ACRES
EXISTING ZONING	R-4
PROPOSED ZONING	PEC
NO. OF BUILDING LOTS	22

- GENERAL NOTES:**
- DRAINAGE PATTERN DEPICTED BY ARROWS (→) IS FOR CONCEPT PURPOSES ONLY. FINAL CONFIGURATION AND SIZE OF DRAINAGE PIPES AND CHANNELS WILL BE DETERMINED DURING THE CONSTRUCTION PLAN DESIGN PROCESS. DRAINAGE FACILITIES SHALL CONFORM TO MSD REQUIREMENTS.
 - APPROXIMATE DETENTION VOLUME:
 $(0.83 - 0.35) \times (2 \frac{1}{2}) \times 40.64 \text{ AC} = 4.71 \text{ AC FT}$
 - SANITARY SEWERS TO BE CONNECTED TO JEFFERSONTOWN WATER TREATMENT PLANT.
 - RETENTION BASINS WILL BE DESIGNED TO LIMIT THE POST DEVELOPED PEAK FLOWS TO THE PRE DEVELOPED PEAK FLOWS.
 - PLAN REVIEW FEES.

LOT 1

USE	OFFICE/WAREHOUSE
BUILDING AREA	52,250 SQ. FT.
OFFICE	12,500 SQ. FT.
WAREHOUSE	39,750 SQ. FT.
PARKING REQUIRED	76 SPACES
PARKING PROVIDED	96 SPACES

BENCH MARK USGS DATUM
BM "STOUT" - USGS BRASS DISC IN CONCRETE WITH METAL WITNESS POST. 1000' EAST OF OLD BLANKENBAKER ROAD. 2800' NORTH OF E REHL ROAD. ELEV. 779.16

LOUISVILLE & JEFFERSON COUNTY PLANNING COMMISSION
NOTICE OF REVISION
THIS PLAN HAS BEEN REVISED TO A PLAN DATED
RECEIVED 4/8/95 IN FILE 9-68-93
and 3/23/95 10-44-93

NOTICE
PERMITS SHALL BE ISSUED ONLY IN CONFORMANCE WITH THE BINDING ELEMENTS OF THIS DISTRICT DEVELOPMENT PLAN

JEFFERSON COUNTY
APPROVED DISTRICT DEVELOPMENT PLAN
DOCKET NO. 9-68-93
APPROVAL DATE Feb. 4, 1994
EXPIRATION DATE 3/24/95
SIGNATURE OF PLANNING COMMISSION
Sharon J. Smith
MARGARET L. SMITH, PLANNING COMMISSION

Rev Prelim Sub Plan

RECEIVED
JAN 21 1994
9-68-93
LOUISVILLE & JEFFERSON COUNTY PLANNING COMMISSION

PRELIMINARY PLAN AND DISTRICT DEVELOPMENT PLAN
BLANKENBAKER CROSSING III
TAX BLOCK 39 LOTS 126 & 475
OWNER/DEVELOPER *
NTS / CROSSINGS CORPORATION
A KENTUCKY CORPORATION
10172 LINN STATION ROAD
LOUISVILLE, KENTUCKY 40223

SCALE 1" = 200'
DATE 4-2-95
REV 5-27-93
REV 11-9-93
REV 1-12-94

FILE 1713
1
Sheets in Set 1