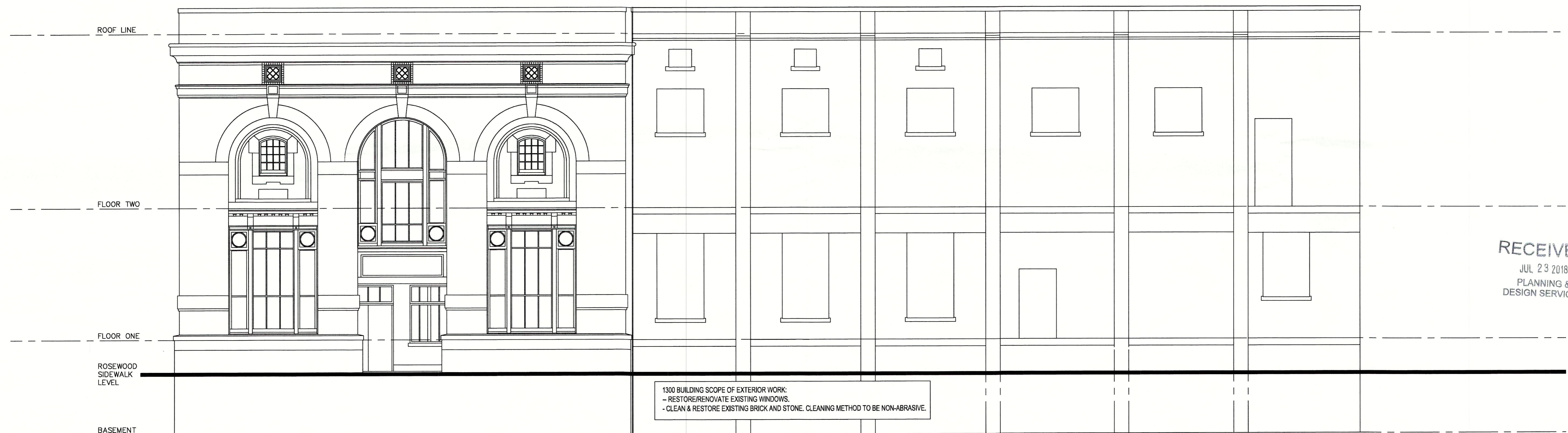




1306 & 1300 BARDSTOWN ROAD EXTERIOR ELEVATION

SCALE: 3/16" = 1'-0"



1300 BARDSTOWN ROAD EXTERIOR ELEVATION - ROSEWOOD

SCALE: 3/16" = 1'-0"

Owner
1300 Bardstown Road, LLC
 7400 South Park Place, Suite 1
 Louisville, Kentucky 40222

Renovation For
 Environmentally Controlled Storage
HIGHLAND CUBES
 1300 Bardstown Road
 Louisville, Kentucky 40204

RECEIVED
 JUL 23 2018
 PLANNING &
 DESIGN SERVICES

Edward Eiche
 Architect
 10011 Tuppence Trace
 Louisville, Kentucky 40223
 502-797-1441

DRAWN BY	EKE
REVIEW BY	EKE
DATE	6/1/18
SHEET INDEX	
EXTERIOR	
ELEVATIONS	
REVISIONS	

A2.00
 SHEET NUMBER