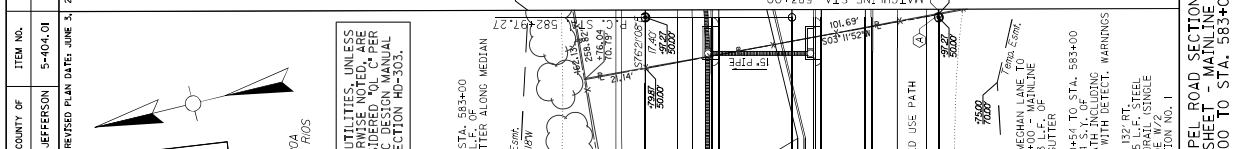


RIGHT OF WAY PLANS

DITCH CONSTRUCTION NOTES

STATION RANGE	TYPE	MATERIAL	CHANNEL LINING	BLANKET
571+00 TO 574+50	LT. SPECIAL	2.0	0	0
574+50 TO 577+00	LT. SPECIAL	2.0	0	0
			ONT (FT.)	ONT (FT.)
			TONS	TONS
			FCR	FCR
			IRM	IRM
			2.0	2.0
			553	383

SCALE: 1" = 20'



ALL UTILITIES, UNLESS OTHERWISE NOTED, ARE CONSIDERED "AS PER KYTC DESIGN MANUAL SECTION 60-303."

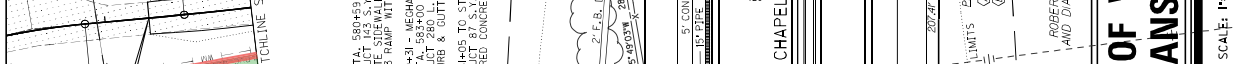
STA. 580+49 TO STA. 583+00
 CONSTRUCT 89 S.Y. OF 4" COLORED CONCRETE
 STA. 579+49 TO STA. 583+00
 CONSTRUCT 324 S.Y. OF STD. CURB & GUTTER ALONG MEDIAN

STA. 577+40 TO STA. 580+00
 CONSTRUCT 176 S.Y. OF 1" TYPE 3 RAMP WITH DETECTABLE WARNINGS
 STA. 49+31 - MEGHAN LANE TO STA. 583+00 - MAINLINE
 CONSTRUCT 87 S.Y. OF STD. CURB & GUTTER

STA. 580+40 TO STA. 583+00
 CONSTRUCT 396 S.Y. OF 4" COLORED CONCRETE
 STA. 580+40 TO STA. 583+00
 CONSTRUCT 396 S.Y. OF 4" COLORED CONCRETE
 STA. 580+40 TO STA. 583+00
 CONSTRUCT 396 S.Y. OF 4" COLORED CONCRETE

END CONSTRUCTION STA. 47+15.00
 END CONSTRUCTION STA. 50+93.29

RIGHT OF WAY PLANS
 COOPER CHAPEL ROAD SECTION III
 PLAN SHEET - MAINLINE
 STA. 577+00 TO STA. 583+00



END CONSTRUCTION STA. 47+15.00
 END CONSTRUCTION STA. 50+93.29

END CONSTRUCTION STA. 47+15.00
 END CONSTRUCTION STA. 50+93.29

END CONSTRUCTION STA. 47+15.00
 END CONSTRUCTION STA. 50+93.29

END CONSTRUCTION STA. 47+15.00
 END CONSTRUCTION STA. 50+93.29

END CONSTRUCTION STA. 47+15.00
 END CONSTRUCTION STA. 50+93.29

END CONSTRUCTION STA. 47+15.00
 END CONSTRUCTION STA. 50+93.29

END CONSTRUCTION STA. 47+15.00
 END CONSTRUCTION STA. 50+93.29

END CONSTRUCTION STA. 47+15.00
 END CONSTRUCTION STA. 50+93.29

END CONSTRUCTION STA. 47+15.00
 END CONSTRUCTION STA. 50+93.29

END CONSTRUCTION STA. 47+15.00
 END CONSTRUCTION STA. 50+93.29

END CONSTRUCTION STA. 47+15.00
 END CONSTRUCTION STA. 50+93.29

END CONSTRUCTION STA. 47+15.00
 END CONSTRUCTION STA. 50+93.29

END CONSTRUCTION STA. 47+15.00
 END CONSTRUCTION STA. 50+93.29

END CONSTRUCTION STA. 47+15.00
 END CONSTRUCTION STA. 50+93.29

END CONSTRUCTION STA. 47+15.00
 END CONSTRUCTION STA. 50+93.29

END CONSTRUCTION STA. 47+15.00
 END CONSTRUCTION STA. 50+93.29

END CONSTRUCTION STA. 47+15.00
 END CONSTRUCTION STA. 50+93.29

END CONSTRUCTION STA. 47+15.00
 END CONSTRUCTION STA. 50+93.29

END CONSTRUCTION STA. 47+15.00
 END CONSTRUCTION STA. 50+93.29

END CONSTRUCTION STA. 47+15.00
 END CONSTRUCTION STA. 50+93.29

END CONSTRUCTION STA. 47+15.00
 END CONSTRUCTION STA. 50+93.29

END CONSTRUCTION STA. 47+15.00
 END CONSTRUCTION STA. 50+93.29

END CONSTRUCTION STA. 47+15.00
 END CONSTRUCTION STA. 50+93.29

END CONSTRUCTION STA. 47+15.00
 END CONSTRUCTION STA. 50+93.29

END CONSTRUCTION STA. 47+15.00
 END CONSTRUCTION STA. 50+93.29

END CONSTRUCTION STA. 47+15.00
 END CONSTRUCTION STA. 50+93.29

STATION	WIDTH	PAVEMENT TYPE	ENTRANCE QUANTITY (SQ. YD)	PAVEMENT QUANTITY (SQ. YD)	PIPE SIZE (INCHES)	PIPE LENGTH (L.F.)
577+00 TO 580+00	4.0	SPECIAL	2.0	2.0	24.0	467
580+00 TO 583+00	4.0	SPECIAL	2.0	2.0	24.0	319

STATION RANGE	TYPE	CHANNEL LINING		MATERIAL		BLANKET	
		CLASS	Q. (CFT.)	T. (FT.)	Q. (TONS)	D. (FT.)	T. (SQ. YD)
577+00 TO 580+00	SPECIAL	2.0	2.0	24.0	467	TRM 1	2.0
580+00 TO 583+00	SPECIAL	2.0	2.0	24.0	319	TRM 1	2.0

DITCH CONSTRUCTION NOTES

USA K. MCGREW AND JAMES G. MCGREW

STA. 577+40 TO STA. 580+00
 CONSTRUCT 176 S.Y. OF 1" TYPE 3 RAMP WITH DETECTABLE WARNINGS

STA. 49+31 - MEGHAN LANE TO STA. 583+00 - MAINLINE
 CONSTRUCT 350 S.Y. OF STD. CURB & GUTTER

STA. 577+40 TO STA. 580+00
 CONSTRUCT 89 S.Y. OF 4" COLORED CONCRETE

STA. 579+49 TO STA. 583+00
 CONSTRUCT 324 S.Y. OF STD. CURB & GUTTER ALONG MEDIAN

STA. 580+40 TO STA. 583+00
 CONSTRUCT 396 S.Y. OF 4" COLORED CONCRETE

STA. 580+40 TO STA. 583+00
 CONSTRUCT 396 S.Y. OF 4" COLORED CONCRETE

STA. 580+40 TO STA. 583+00
 CONSTRUCT 396 S.Y. OF 4" COLORED CONCRETE

STA. 580+40 TO STA. 583+00
 CONSTRUCT 396 S.Y. OF 4" COLORED CONCRETE

STA. 580+40 TO STA. 583+00
 CONSTRUCT 396 S.Y. OF 4" COLORED CONCRETE

STA. 580+40 TO STA. 583+00
 CONSTRUCT 396 S.Y. OF 4" COLORED CONCRETE

STA. 580+40 TO STA. 583+00
 CONSTRUCT 396 S.Y. OF 4" COLORED CONCRETE

STA. 580+40 TO STA. 583+00
 CONSTRUCT 396 S.Y. OF 4" COLORED CONCRETE

STA. 580+40 TO STA. 583+00
 CONSTRUCT 396 S.Y. OF 4" COLORED CONCRETE

STA. 580+40 TO STA. 583+00
 CONSTRUCT 396 S.Y. OF 4" COLORED CONCRETE

STA. 580+40 TO STA. 583+00
 CONSTRUCT 396 S.Y. OF 4" COLORED CONCRETE

STA. 580+40 TO STA. 583+00
 CONSTRUCT 396 S.Y. OF 4" COLORED CONCRETE

STA. 580+40 TO STA. 583+00
 CONSTRUCT 396 S.Y. OF 4" COLORED CONCRETE

STA. 580+40 TO STA. 583+00
 CONSTRUCT 396 S.Y. OF 4" COLORED CONCRETE

STA. 580+40 TO STA. 583+00
 CONSTRUCT 396 S.Y. OF 4" COLORED CONCRETE

STA. 580+40 TO STA. 583+00
 CONSTRUCT 396 S.Y. OF 4" COLORED CONCRETE

STA. 580+40 TO STA. 583+00
 CONSTRUCT 396 S.Y. OF 4" COLORED CONCRETE

STA. 580+40 TO STA. 583+00
 CONSTRUCT 396 S.Y. OF 4" COLORED CONCRETE

STA. 580+40 TO STA. 583+00
 CONSTRUCT 396 S.Y. OF 4" COLORED CONCRETE

STA. 580+40 TO STA. 583+00
 CONSTRUCT 396 S.Y. OF 4" COLORED CONCRETE

STA. 580+40 TO STA. 583+00
 CONSTRUCT 396 S.Y. OF 4" COLORED CONCRETE

STA. 580+40 TO STA. 583+00
 CONSTRUCT 396 S.Y. OF 4" COLORED CONCRETE

STA. 580+40 TO STA. 583+00
 CONSTRUCT 396 S.Y. OF 4" COLORED CONCRETE

FILE NAME: C:\PWORKING\117108\3566.R27.DWG
 DATE PLOTTED: March 28, 2016
 USER: JACSMITH
 E-SHEET NAME: R027001
 MFC Station: V81.3.918