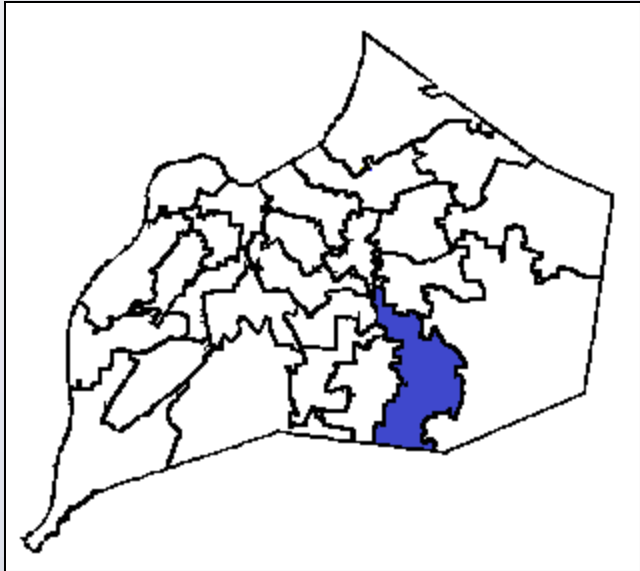
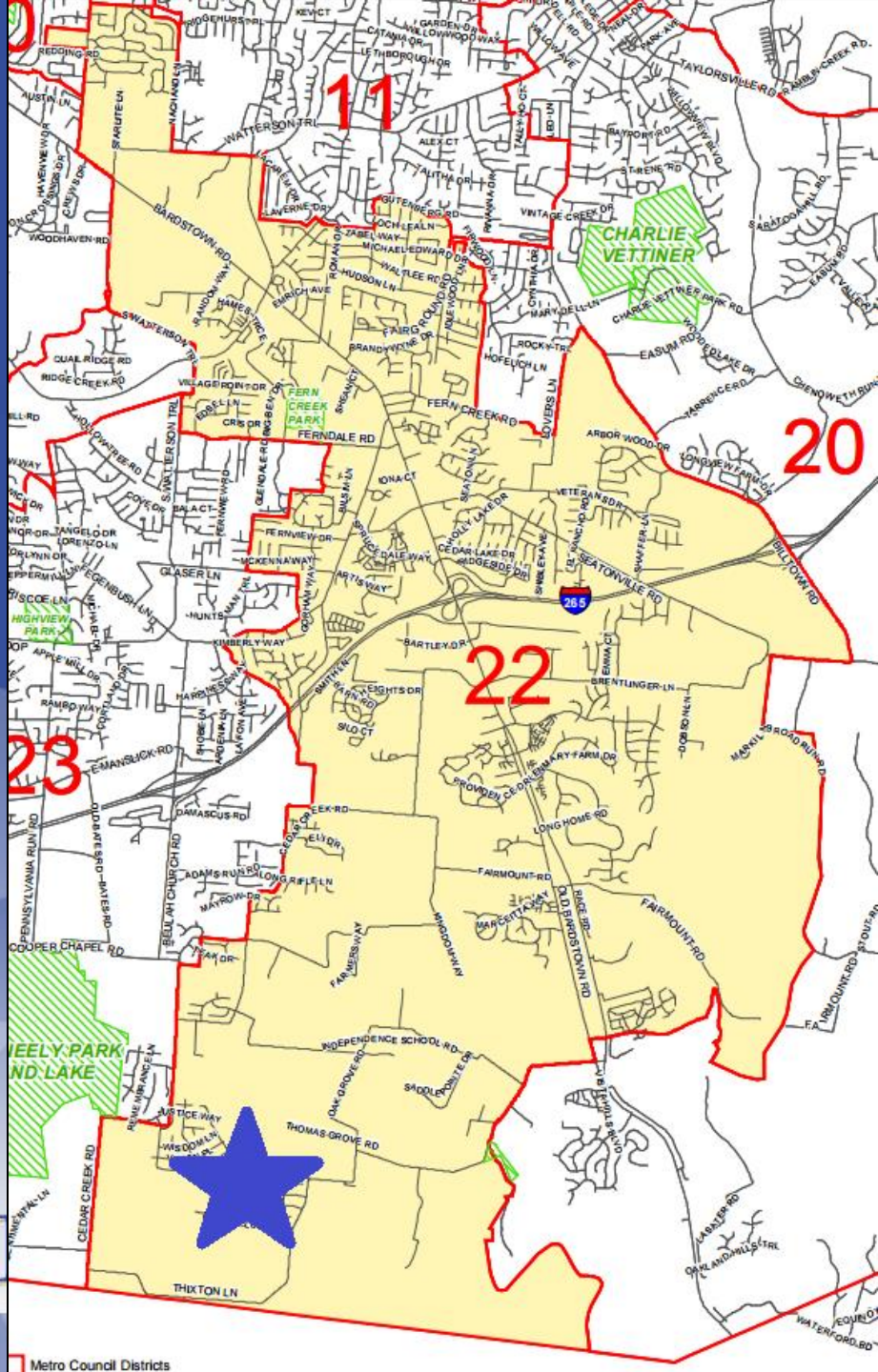


# 16ZONE1075

## Creek View Section 3

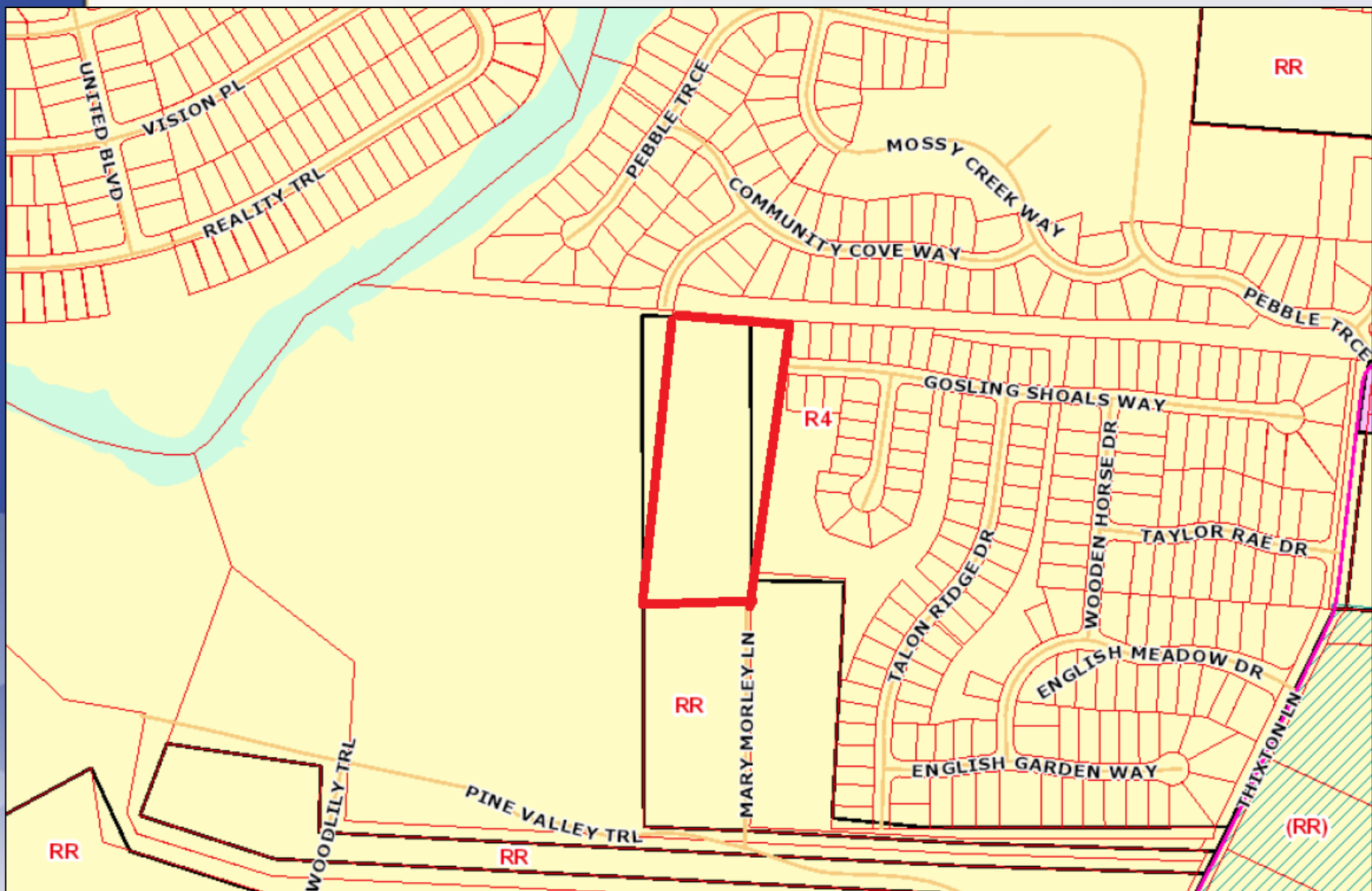


**Planning/Zoning, Land Design & Development**  
**May 30, 2017**

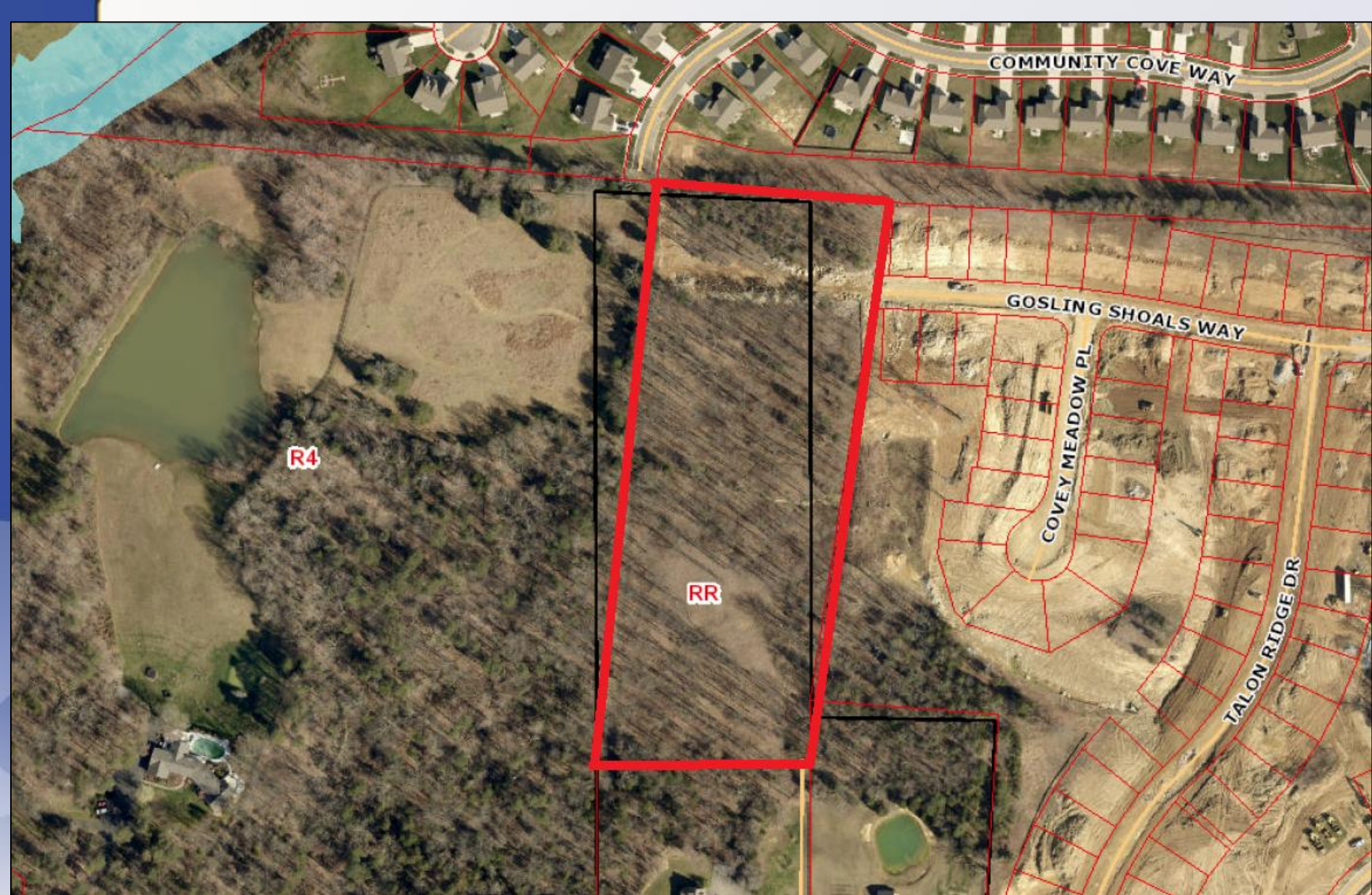


11700 Mary Morley Drive  
 District 22 - Robin Engel









# Request(s)

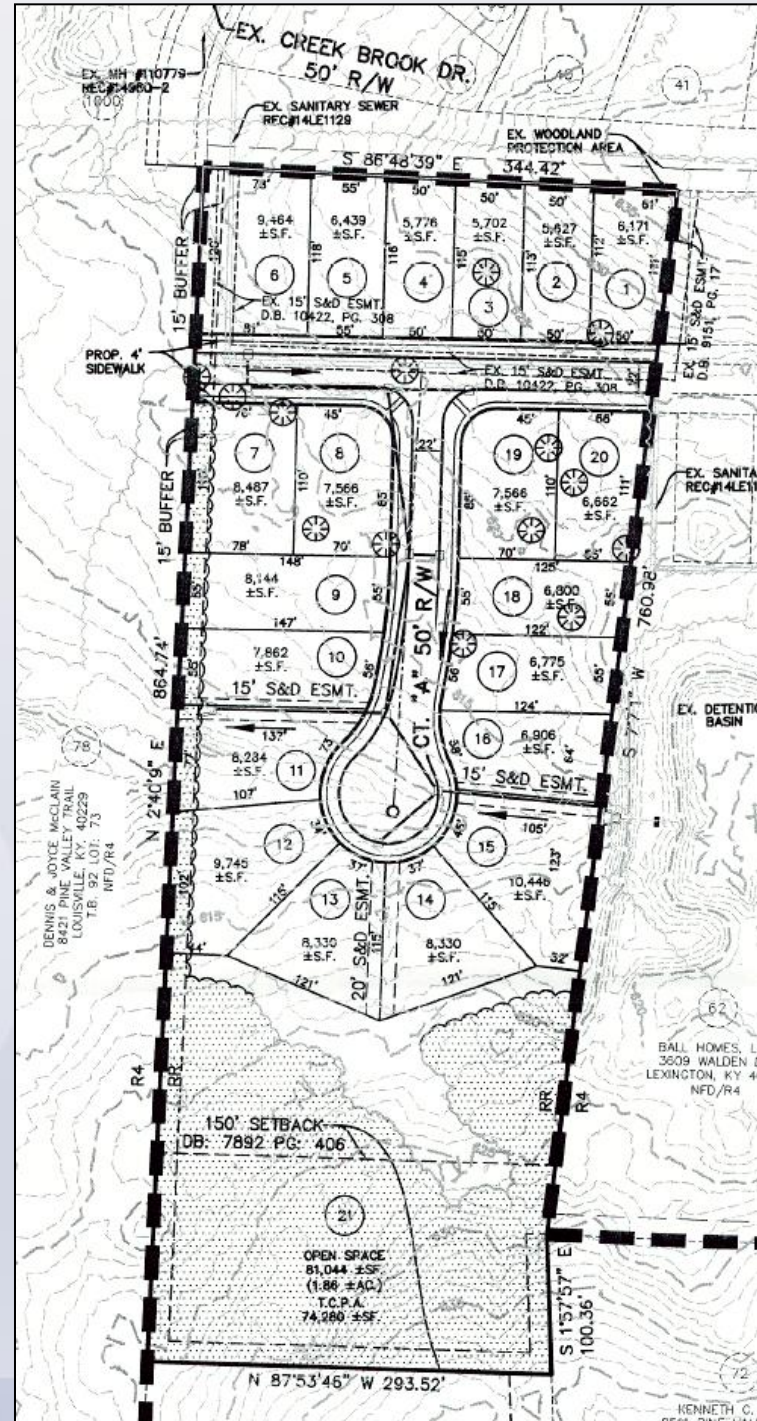
- Change-in-zoning from R-R to R-4 on 6.17 acres
- Conservation Subdivision Plan

# Case Summary

- Twenty lots proposed
- 80,000 sf of the subject is being provided in open space, of which 74,000 sf is being maintained as a Tree Canopy Protection Area.



# Applicant's Development Plan



# PC Recommendation

- The Planning Commission conducted a public hearing on 4/20/2017
- No one spoke in opposition.
- The Commission made sufficient findings that the proposal complies with the Comprehensive Plan-Cornerstone 2020
- The Commission recommended approval of the zoning map amendment from R-R to R-4 by a vote of 8-0 (8 members voted)