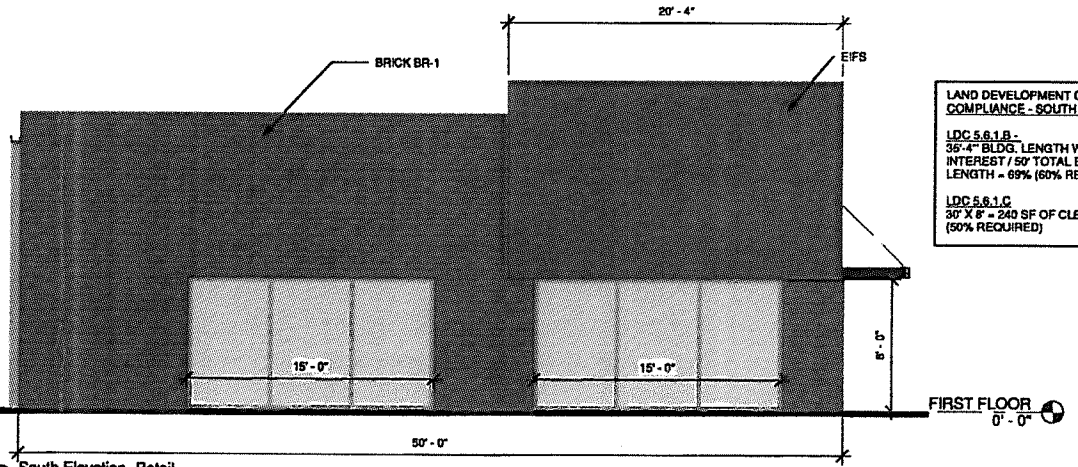
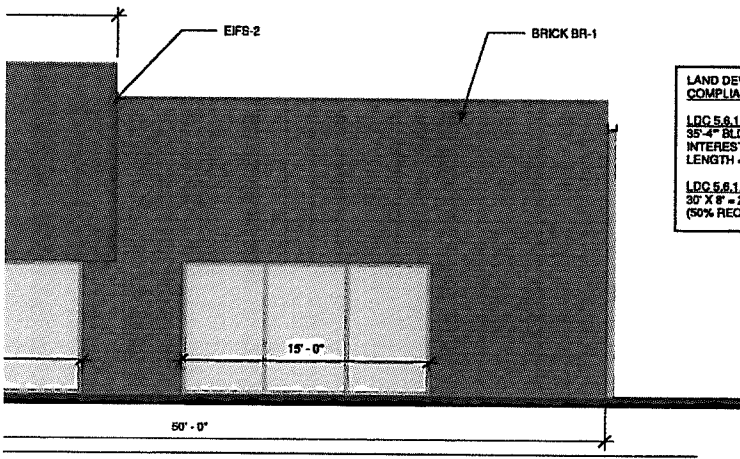
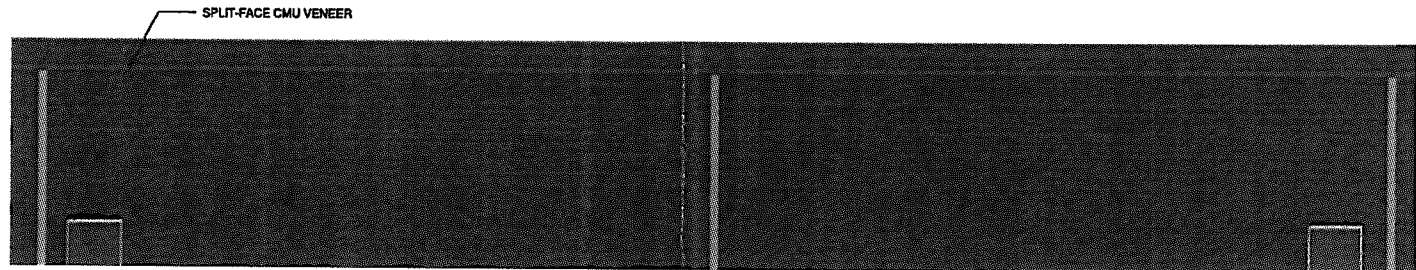
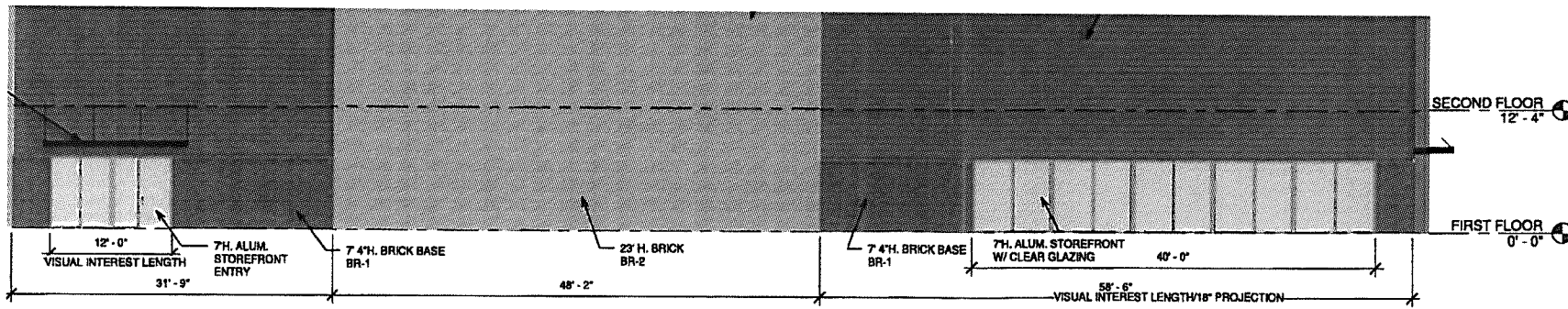


① East Elevation - Retail
 3/16" = 1'-0"



④ South Elevation - Retail
 3/16" = 1'-0"

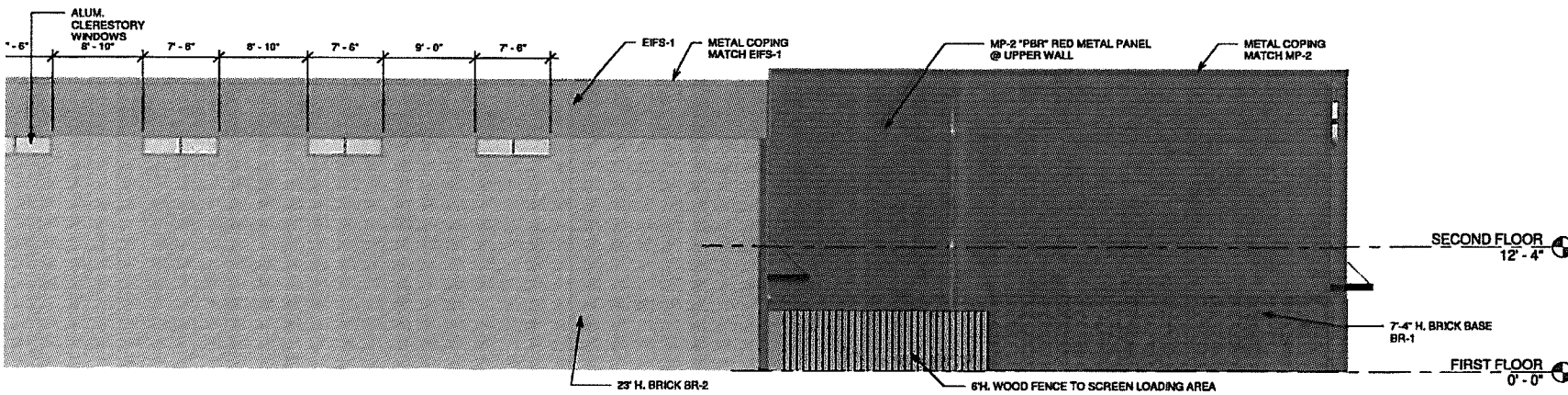




5.5.2 B 2 - LOADING AREA
THE LOADING AREA IS SC FROM VIEWS FROM PUBL BY ITS LOCATION BEHIND RETAIL BUILDING.

LDC 5.5.1.B.1
102' BLDG. LENGTH WITH INTEREST / 168' TOTAL BL LENGTH = 60.3% (80%/101 REQUIRED)

SINCE ELEVATION IS OVE 64' OF GLASS ENTRANCE IS PROPOSED. 20% OF 169' = GLASS ENTRANCE/WIND



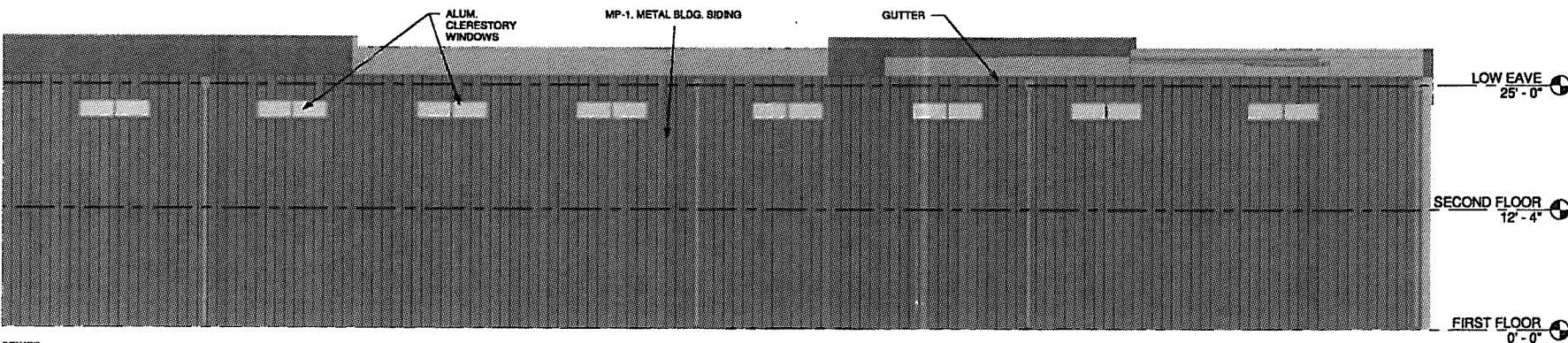
LAND DEVELOPMENT CO COMPLIANCE - SOUTH E

5.5.2 A - LOCATION ORIE THE SOUTH ELEVATION F SECONDARY STREET (AC ROAD), PROPOSED DESK CONSISTENT WITH DESIGN MATERIALS ON C FACADES AND MEETS DE STANDARD INTENT.

5.5.2 B 2 - LOADING ARE THE LOADING AREA IS SC FROM VIEWS FROM ACCI AND NEIGHBORS BY A FE

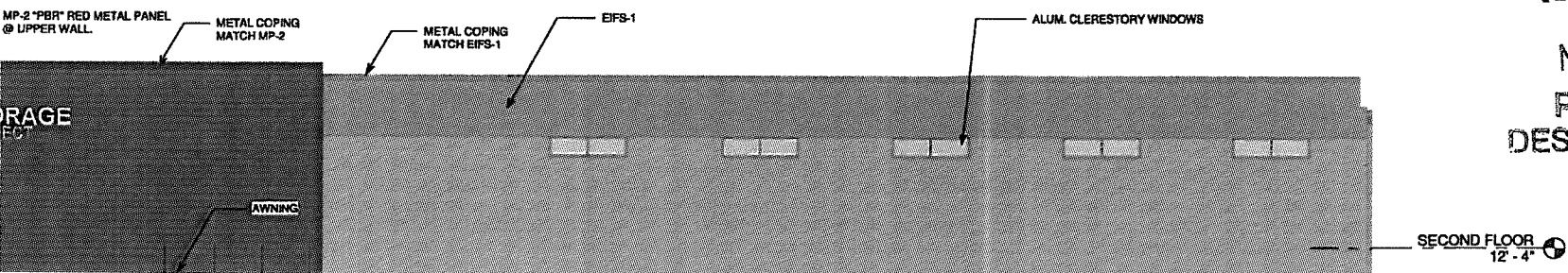
LDC 5.5.1.B.1 - PROPOSED: 100' BLDG. L WITH VISUAL INTEREST / TOTAL BLDG. LENGTH = (REQUIRED: 60%/93'-4')

NO UNINTERRUPTED FAC/ OVER 100' L.



LAND DEVELOPMENT CO COMPLIANCE - SOUTH E

5.5.2 A - LOCATION ORIE THE WEST ELEVATION DI FACES A PUBLIC STREET I PROPOSED DESIGN IS CI WITH DESIGN MATERIALS OTHER FACADES AND MI DESIGN STANDARD INTE



LAND DEVELOPMENT CO COMPLIANCE - NORTH E

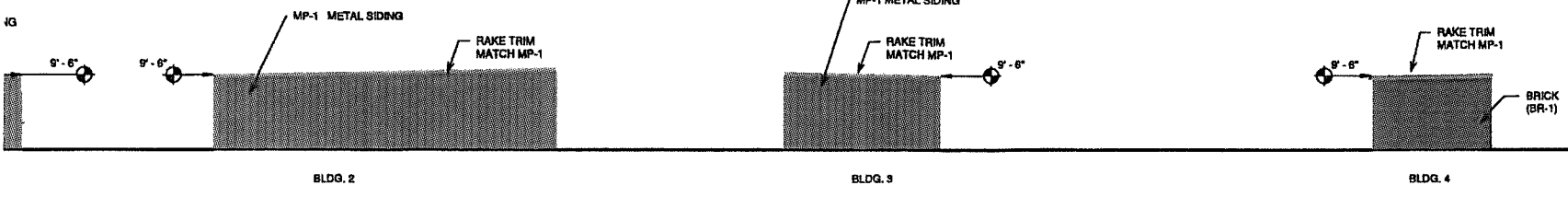
5.5.2 A - LOCATION ORIE THE NORTH ELEVATION PUBLIC STREET (I-245). P DESIGN IS CONSISTENT DESIGN MATERIALS ON C FACADES AND MEETS DE STANDARD INTENT.

LDC 5.5.1.B.1
PROPOSED: 117'-6" BLDG

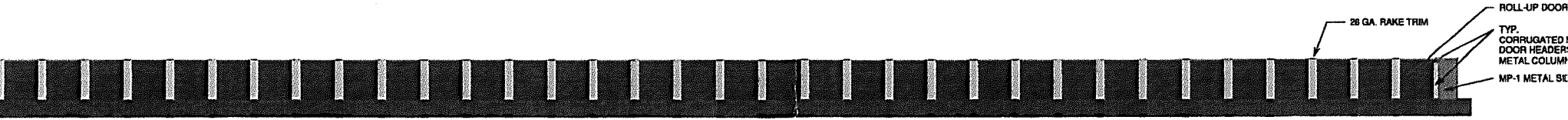
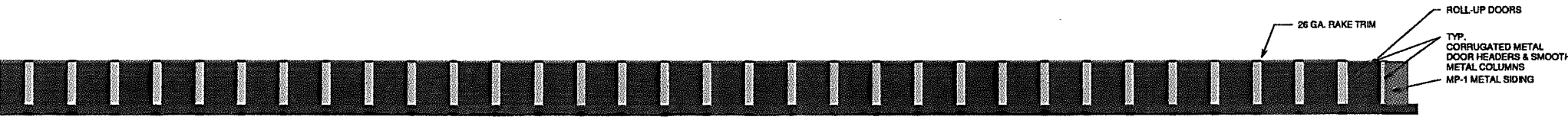
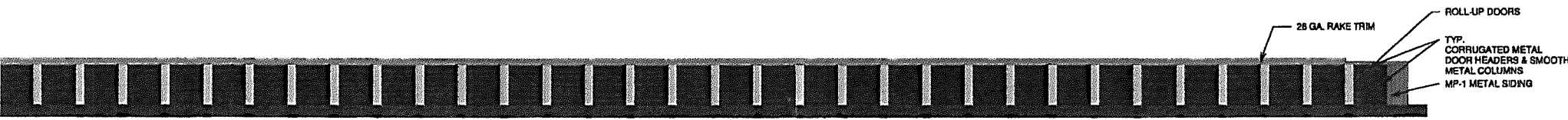
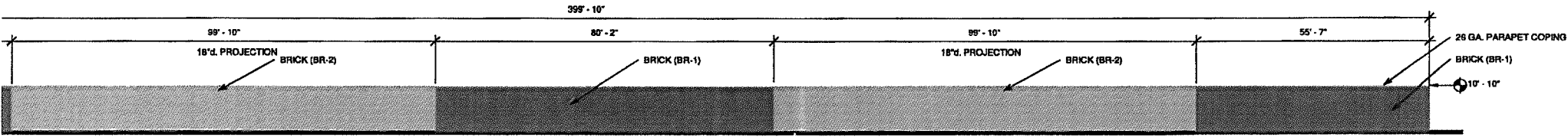
RECEIVED
MAY 18 2018
PLANNING & DESIGN SERVICES



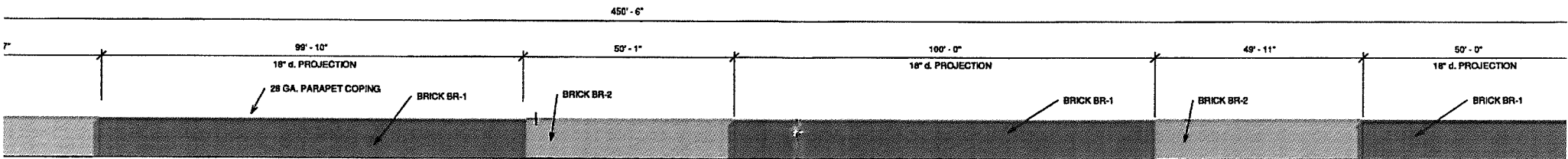
(REQUIRED: 60% OF 400' = 240'-0")
 NO UNINTERRUPTED FACADE IS (2) 100' L./18" D. PROJECTIONS AS PROPOSED TO REDUCE 400' UNINTERRUPTED LENGTH.
 (REQUIRED: 20% OF 400' = 80')



RECEIVED
 MAY 18 2018
 PLANNING & DESIGN SERVICES



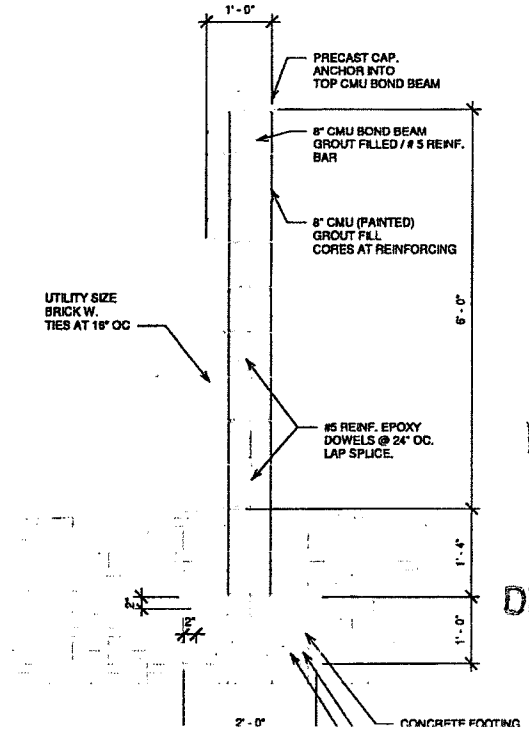
26 GA. RAKE TRIM



LAND DEVELOPMENT CODE COI
BLDG. 4 NORTH ELEVATION

5.5.2.A - LOCATION/ORIENTATION:
THE NORTH ELEVATION FACES
STREET (I-285). PROPOSED DES
CONSISTENT WITH DESIGN/MAT
OTHER FACADES AND MEETS D
STANDARD INTENT.

LDC 5.6.1.B.1
PROPOSED: 450' BLDG. LENGTH
INTEREST = 100%
(REQUIRED: 60% OF 450' = 270'-0")
NO UNINTERRUPTED FACADE IS
(2) 100' L / 18" D. + (2) 50' PROJEC
TOTAL ARE
PROPOSED TO REDUCE 450' UN
LENGTH.
(REQUIRED: 20% OF 450' = 90')

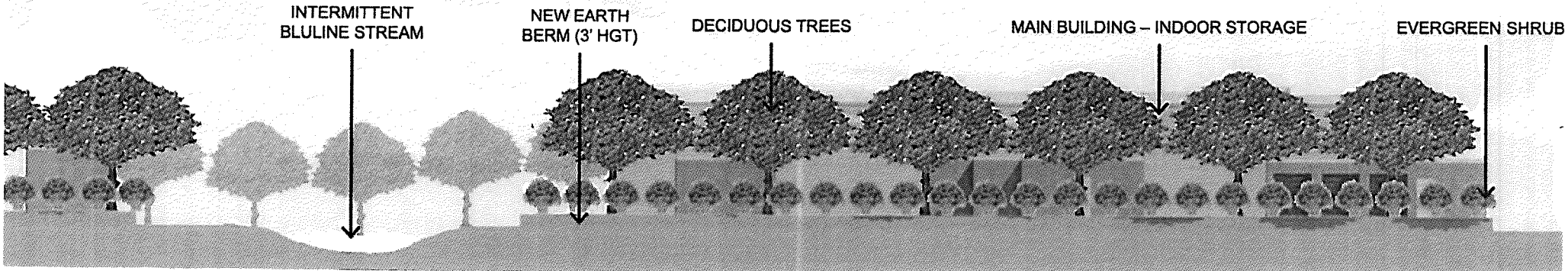
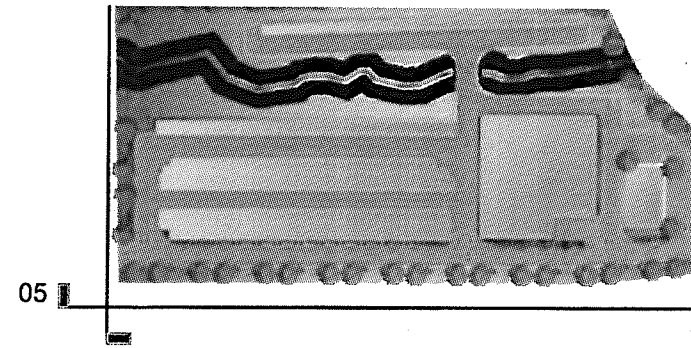


RECEIVED
MAY 18 2018
PLANNING &
DESIGN SERVICE

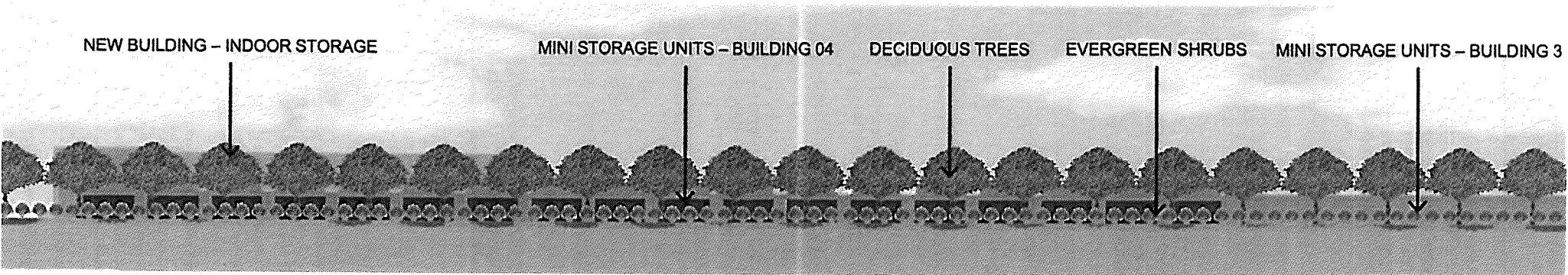
RECEIVED

MAY 18 2018

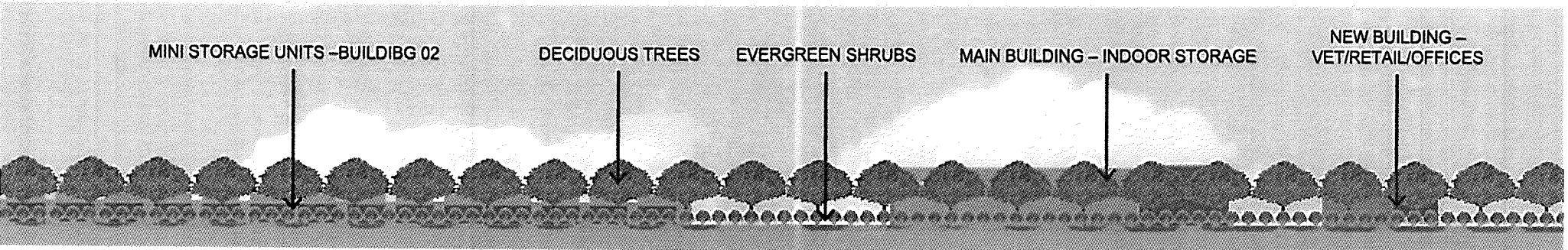
PLANNING &
DESIGN SERVICES



ORTH/SOUTH

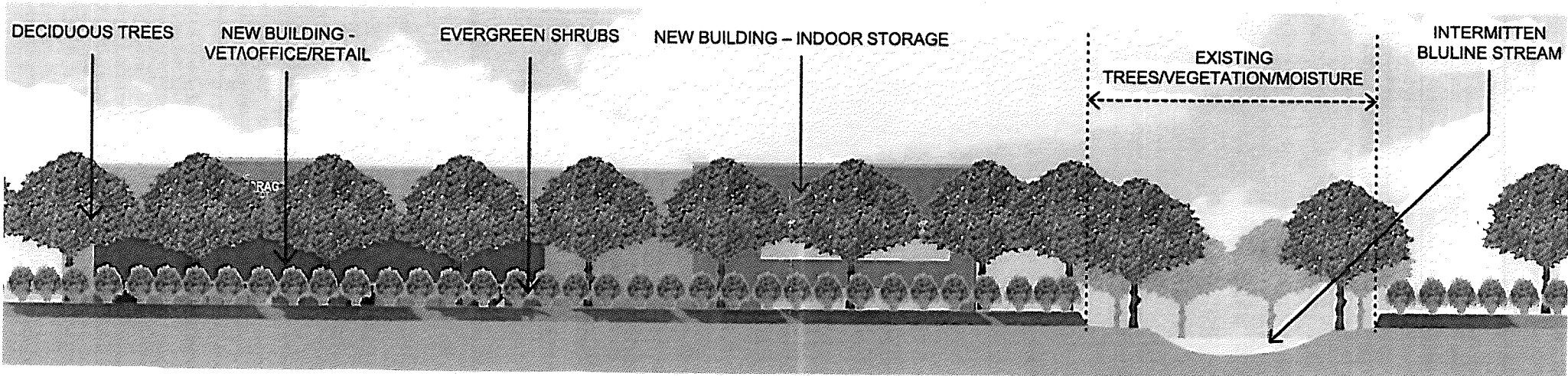
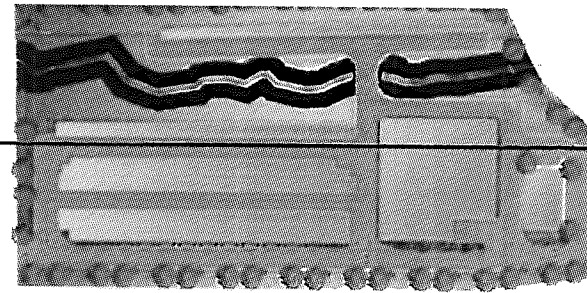


ST/WEST



RECEIVED
MAY 18 2018
PLANNING &
DESIGN SERVICES

02



ORTH/SOUTH

