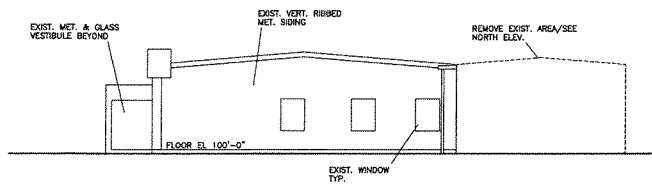
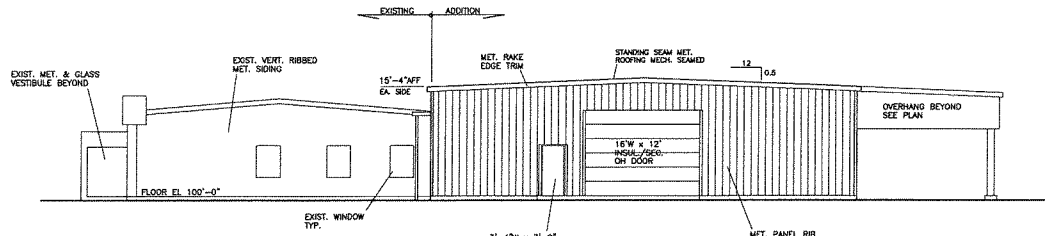


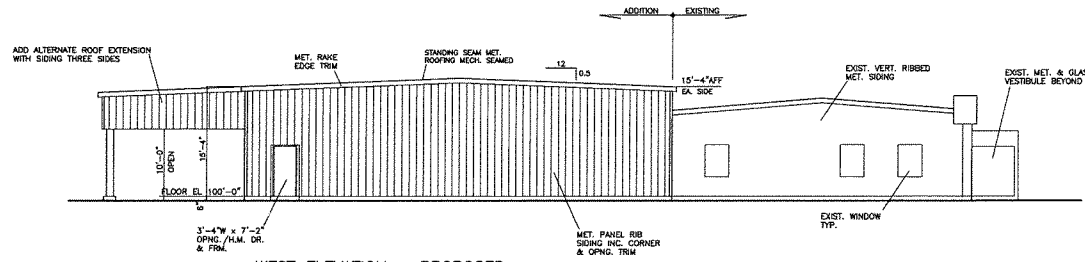
17 ZONE 10 13



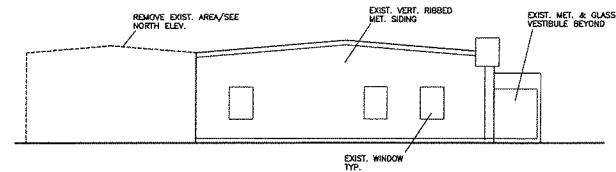
**EAST ELEVATION - EXISTING**  
SCALE: 1/8"=1'-0"



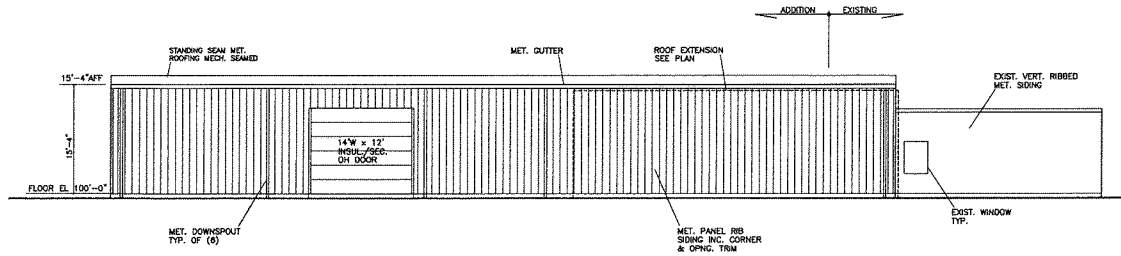
**EAST ELEVATION - PROPOSED**  
SCALE: 1/8"=1'-0"



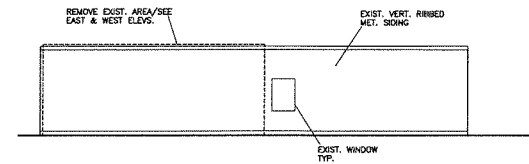
**WEST ELEVATION - PROPOSED**  
SCALE: 1/8"=1'-0"



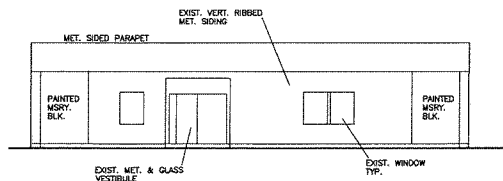
**WEST ELEVATION - EXISTING**  
SCALE: 1/8"=1'-0"



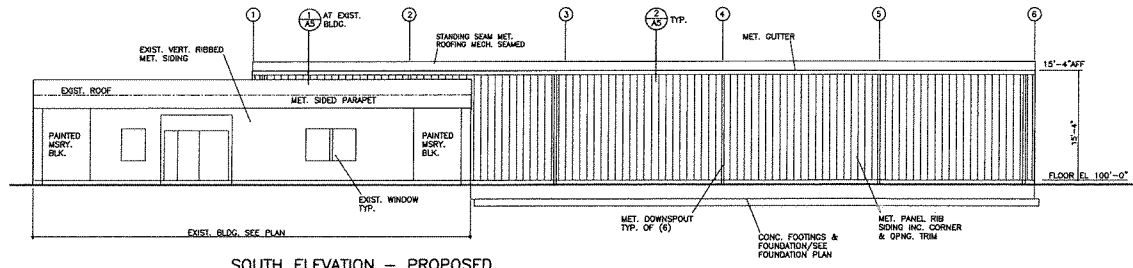
**NORTH ELEVATION - PROPOSED**  
SCALE: 1/8"=1'-0"



**NORTH ELEVATION - EXISTING**  
SCALE: 1/8"=1'-0"



**SOUTH ELEVATION - EXISTING**  
SCALE: 1/8"=1'-0"



**SOUTH ELEVATION - PROPOSED**  
SCALE: 1/8"=1'-0"

**F.W. OWENS COMPANY, INC.**

PROPOSED WAREHOUSE ADDITION & OFFICE REMODELING

4011 SHEPHERDSVILLE RD. LOUISVILLE, KENTUCKY

**FWO**

F.W. OWENS COMPANY  
GENERAL CONTRACTORS  
CONSTRUCTION MANAGERS

4800 Poplar Place, Suite 200  
Louisville, Kentucky 40213

PROPOSED WAREHOUSE ADDITION & EXISTING OFFICE ELEVATIONS

DRAWN BY	DATE	DWG. NO.
RLH	04/25/17	
REVISIONS		

A2

RECEIVED  
MAY 22 2017  
PLANNING & DESIGN SERVICES