

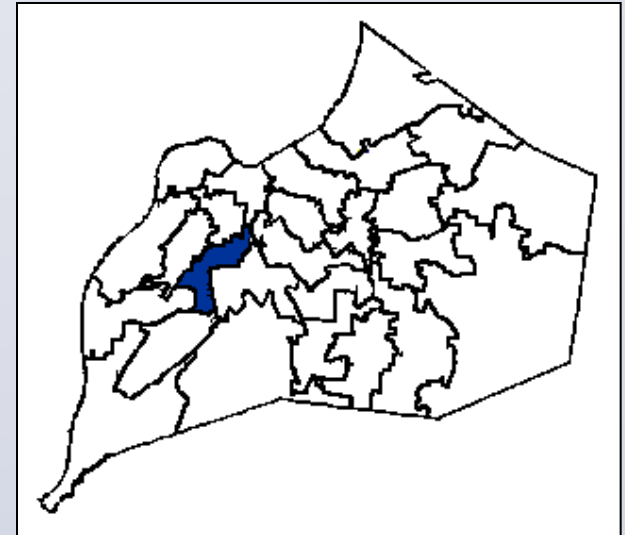
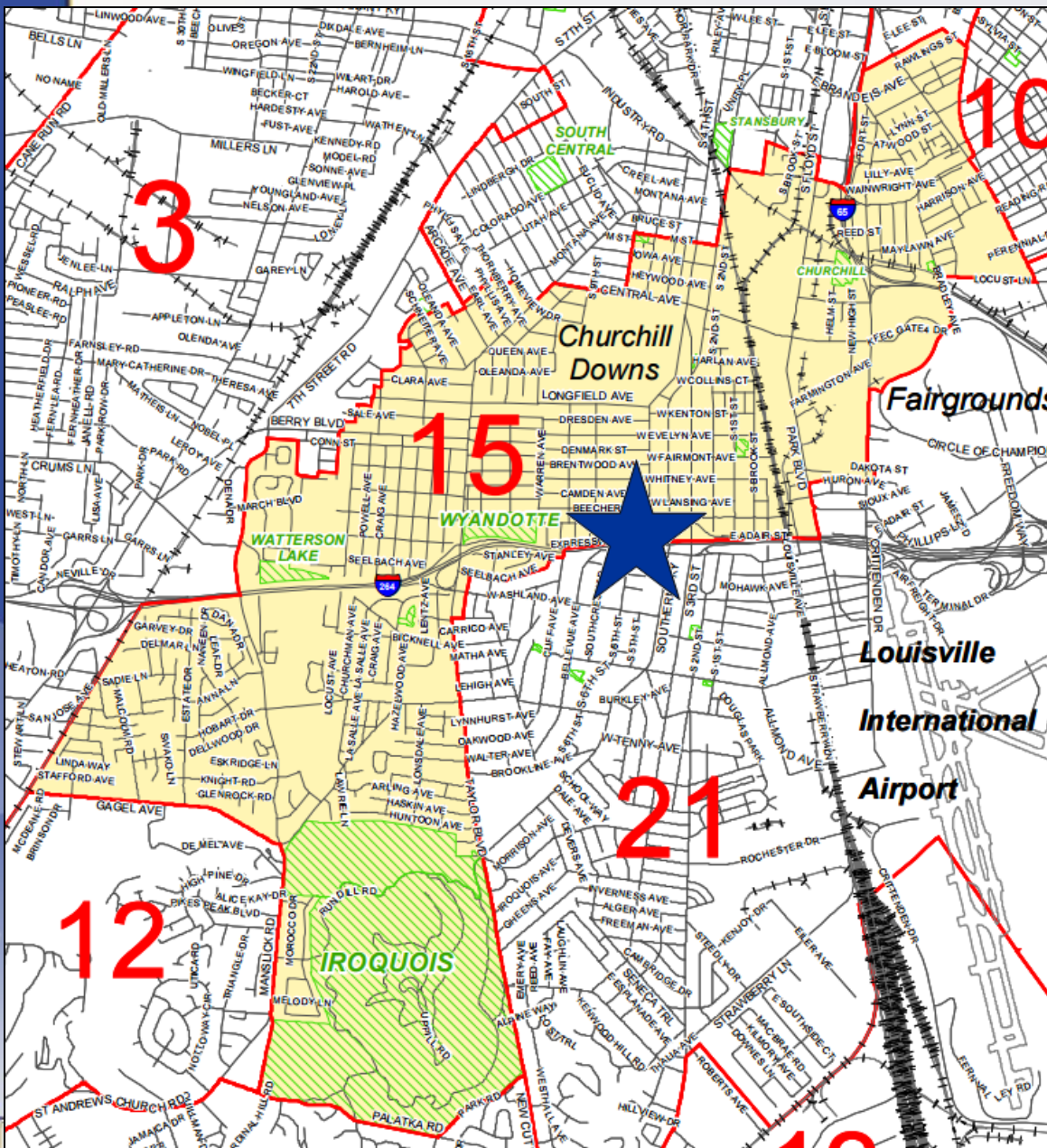
18175

Expressway Church Street Closure



Planning/Zoning, Land Design & Development
November 8, 2016

Alleys Between S. 5th & S. 6th Streets District 15 - Marianne Butler



Request(s)

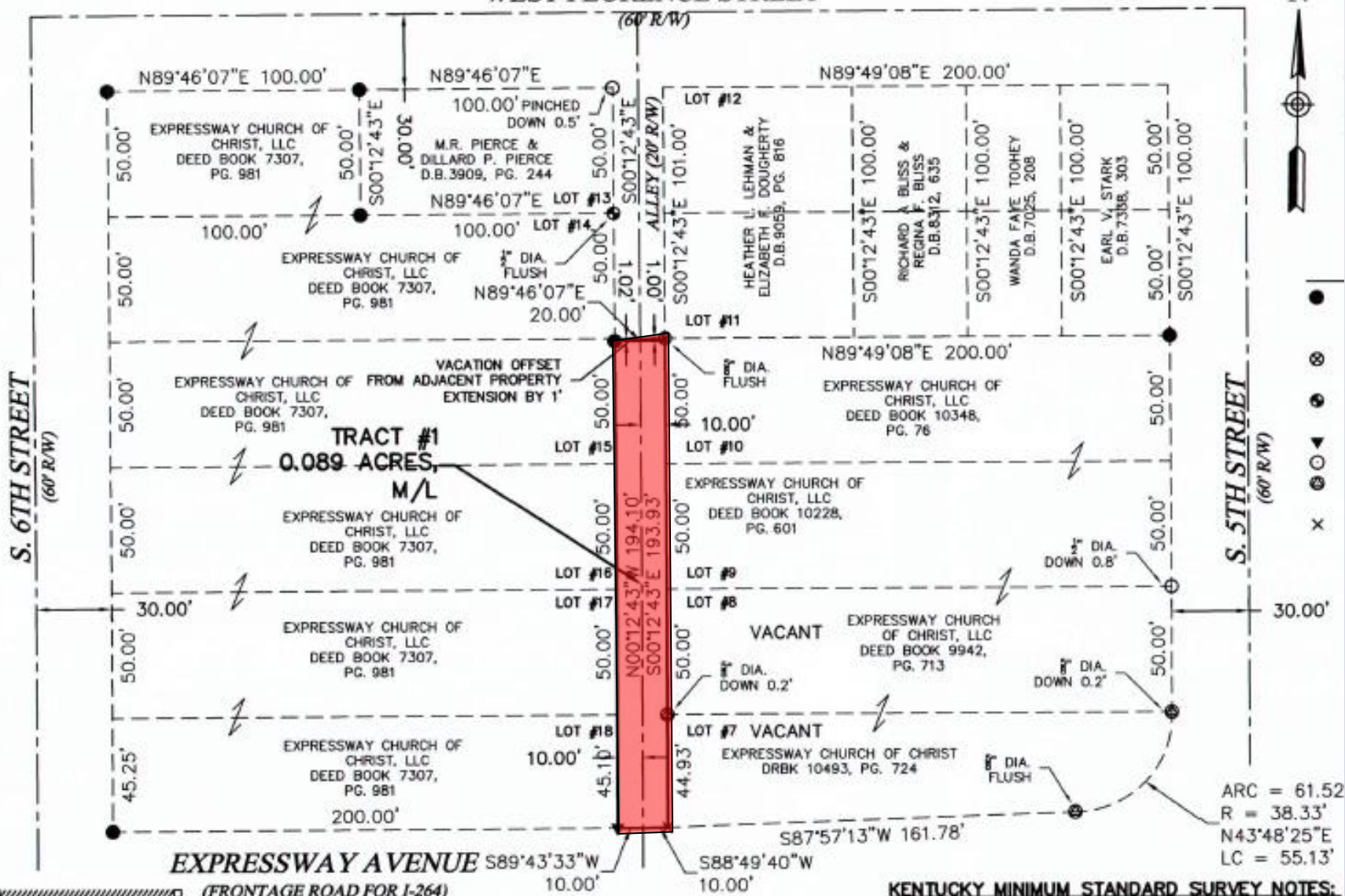
- Partial closure of a 20-foot unimproved alley located in a block bound by W. Florence Street, Expressway Avenue, S. 5th Street and S. 6th Street

Case Summary / Background

- Partial closing of an unimproved alley
- The church owns all the adjoining properties
- The properties will be consolidated to allow for expansion of the church
- No comments from utility easement holders



WEST FLORENCE STREET



STATE of KENTUCKY

LOUISVILLE METRO

KENTUCKY MINIMUM STANDARD SURVEY NOTES:

PC Recommendation

- Public Hearing was held on 9/29/2016
 - No one spoke in opposition.
- The Commission made sufficient findings that the proposal complies with the Comprehensive Plan-Cornerstone 2020
- The Commission recommended approval of the closure by a vote of 7-0 (7 members voted)