

RECEIVED

AUG 06 2018

PLANNING &  
DESIGN SERVICES

18 CUP 1054

Enhanced Landscape Plan  
9200 Leesgate Road

July 20, 2018

Richard McCord  
9101 Nottingham Pkwy

[cimpletek@gmail.com](mailto:cimpletek@gmail.com)

502-425-3032

# Enhanced Landscape Plan

## *(Single Lane Road with 12 ft Buffer)*

- ▶ Single Row Cryptomeria Radicans - 6 ft between plants, 6 ft or more from property line
  - ▶ Plants avoid Right of Way
  - ▶ Long-term plant survival
    - Avoids plant disturbance
    - Sunlight exposure to more area – except between plants when growing into each other
  - ▶ Initial Plant Size - 8 ft tall x 3 ft wide (Partial View Blockage)
    - 3rd yr – 12 ft tall x 5 ft wide (Approaching Total View Blockage)
    - 5th yr – 15 ft tall x 6 ft wide (Total View Blockage)
  - ▶ Install Irrigation System and Fertilizer (Ensure Success)
    - To establish plants
    - Accelerate growth rate to achieve “Total View Blockage”
    - Protect plants against a severe drought
  - ▶ No topping of trees (Natural Pyramidal Appearance)
    - Mature height 30 to 40 ft – blocks tall office building
  - ▶ Trimming out of every OTHER tree (Long-term plant survival strategy)
    - After “Full View Blockage,” trim enough each yr for permanent trees to fill in opened space
    - At 12 ft (Maximum) width, remove what remains of trimmed out trees
    - See *Cryptomeria Radicans Row Illustrations* at 3, 6, 9, and 12 ft wide

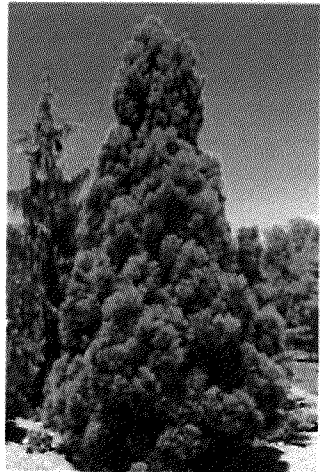
RECEIVED

AUG 06 2018

PLANNING &  
DESIGN SERVICES

18 CUP 1054

# American Conifer Society - Plant Data



*Cryptomeria japonica* 'Radicans' is a robust, fast-growing selection of Japanese cedar with columnar to pyramidal growth habit. It has dense, blue-green, feathery foliage that retains its color in winter with less bronzing than other Japanese cedars. 'Radicans' grows 30 to 40 feet tall and 15 to 20 feet wide.

RECEIVED

AUG 06 2018

PLANNING &  
DESIGN SERVICES

18 CJP 1054

RECEIVED

AUG 06 2018  
PLANNING &  
DESIGN SERVICES

# Cryptomeria Radicans - Growth Rates

*Observed by Carol Lynn Krom Seadale, Angel Creek Nursery, Bishop, Georgia*

- ▶ Initial Plant Size: 14 ft tall x 6½ ft wide (4 inch caliper)
  - ▶ Nursery ground under IDEAL Conditions
    - ▶ Fertilized during 3 growing seasons, and watered regularly
  - ▶ planted in ground 2002 - 4 yrs old (1998 - 2002)
  - ▶ Average Growth Rate (**fast**): 42 in/yr height x 20 in/yr width (1 in/yr diameter)
- ▶ Final Plant Size: 35 ft tall x 16 ft wide (15 inch caliper)
  - ▶ No longer IDEAL Conditions
    - ▶ Not regularly fertilized, or watered
  - ▶ 15 yrs planted in ground (2002 - 2017) – 19 yrs old (1998 – 2017)
  - ▶ Average Growth Rate (**slow**): 17 in/yr height x 8 in/yr width (¾ in/yr diameter)
- ▶ Assuming Georgia “slow” growth rate in Enhanced Landscape
  - ▶ Irrigation and fertilizer ensures, or improves “slow” rate to “medium” rate
  - ▶ “Medium” rate defined as anything between “slow” and “fast”
- ▶ *Carol’s Review of Presentation*
  - ▶ *Very accurate, great photos, and extremely polished*

RECEIVED

AUG 06 2018

PLANNING &  
DESIGN SERVICES

18 CIP 1054

# Crytomeria Radicans – Considerations

*Recommendations by Barbara Fornwalt, Garden Art Plants, LLC*

- ▶ **Excellent Project**
  - ▶ thoughts to protect the investment and foster success with large evergreens
- ▶ **Slightly Raised Berm – 8 to 10 inches**
  - ▶ All Evergreens need excellent drainage to prevent root rot in KY winter rainy season
- ▶ **Irrigation Absolute Necessity**
  - ▶ Do not overdo it with fertilizer, none should be used for the first year after planting
  - ▶ may want to add a late fall spraying with an evergreen desiccant to keep the foliage (the investment!) from drying out in winter winds when the irrigation will be shut off
- ▶ **Trimming Important to keep Permanent Radicans Healthy**
  - ▶ Like clarity of the drawings
- ▶ **Barbara’s Review of Presentation**
  - ▶ Beautiful job, really pretty trees, and presentation appears to be very thorough

RECEIVED

AUG 06 2018

PLANNING &  
DESIGN SERVICES

# Local Example - Single Row of Radicans



RECEIVED  
AUG 06 2018  
PLANNING &  
DESIGN SERVICES

- ▶ Corbett's (historic Von Allmen mansion)
  - ▶ 5050 Norton Blvd, Louisville, KY 40241
    - Radicans achieve "Total Blockage"
    - Plants not properly maintained, yet still healthy and attractive!
    - No topping of trees (Natural Pyramidal Appearance)
    - Landscaped with native plants - Redbud Forrest Pansy (Burgundy Foliage next to Blue Green Cryptomeria Radicans)

# Privacy Screen – Partial to Total Blockage



Partial View Blockage – term to describe when plants have yet to grow together.

RECEIVED

AUG 06 2018

PLANNING &  
DESIGN SERVICES



Total View Blockage – term to describe when plants begin to grow together, blockage improves with greater plant height.

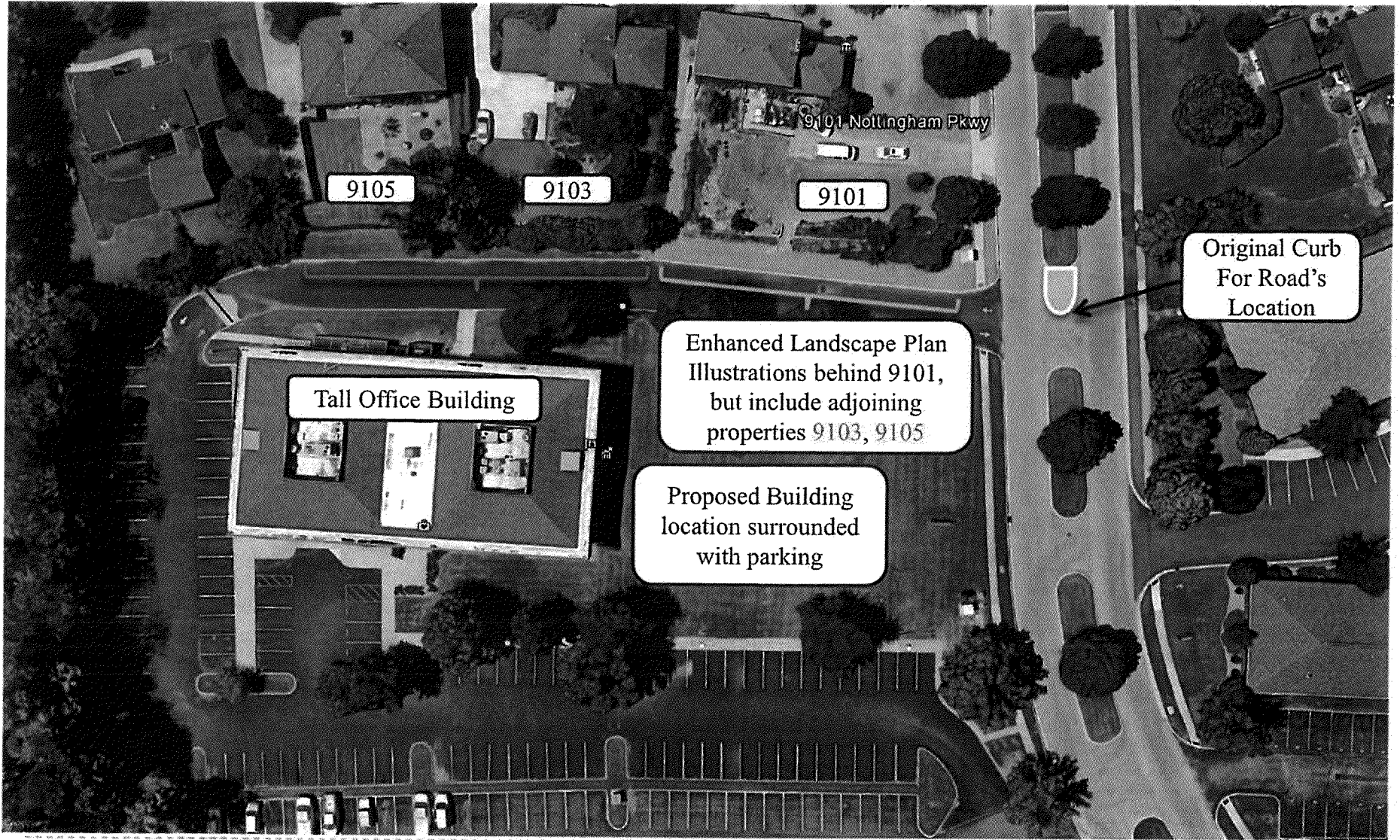


RECEIVED

AUG 06 2018

PLANNING &  
DESIGN SERVICES

# Google Satellite – Latest but 4 Years Ago



18 CUP 1054



3 ft wide Cryptomeria Radicans  
Partial View Blockage

Single Row – 6 ft spacing  
3 ft wide Cryptomeria Radicans

Additional Parking Spaces  
By diagonal parking off single lane road

Proposed Building  
(1 - Story)

9101 Nottingham Parkway Residential Zone with approximately  
12 Foot Buffer and 33% of the Road Removed

6 ft  
spacing

Red Line  
12 ft New Buffer

4ft Current Buffer

6 ft Center of Buffer

Breakthrough  
Leesgate Road

Leesgate Road

9200 Leesgate Road 7/20/2018

RECEIVED

**6 ft wide Cryptomeria Radicans**  
Achieving Total View Blockage

Single Row – 6 ft Spacing  
6 ft wide Cryptomeria Radicans

Additional Parking Spaces  
By diagonal parking off single lane road

Proposed Building  
(1 - Story)

9101 Nottingham Parkway Residential Zone with approximately  
12 Foot Buffer and 33% of the Road Removed

6 ft  
spacing

Red Line  
12 ft New Buffer

4ft Current Buffer

6 ft Center of Buffer

Breakthrough  
Leesgate Road

Leesgate Road

9200 Leesgate Road 7/20/2018

RECEIVED

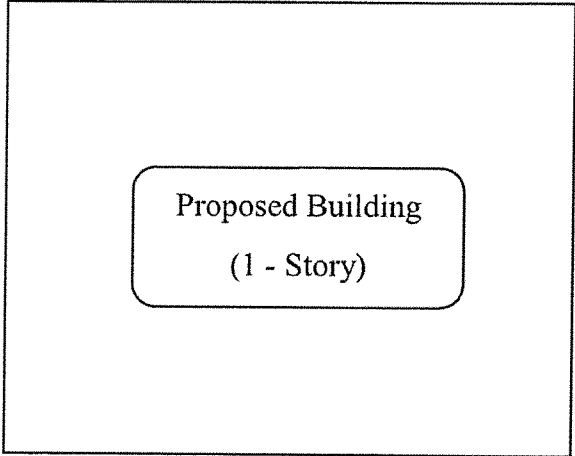
AUG 06 2018

PLANNING &  
DESIGN SERVICES

18 CUP 1054

9 ft wide *Cryptomeria Radicans*  
Total View Blockage  
with trimming of every other tree

Additional Parking Spaces  
By diagonal parking off single lane road



Single Row – 6 ft spacing  
9 ft (green) & 3 ft (orange) wide  
*Cryptomeria Radicans*

Permanent trees  
9 ft (green) wide  
*Cryptomeria Radicans*

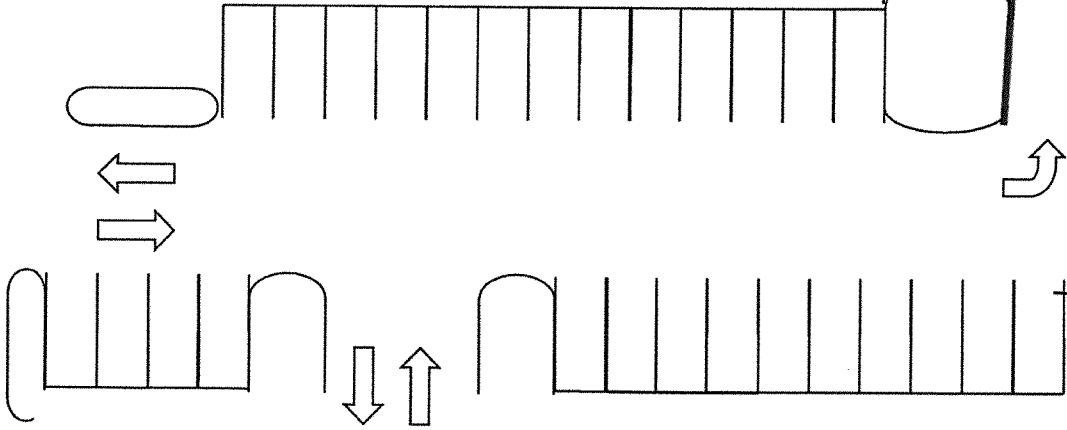
6 ft  
spacing

Trimmed trees  
3 ft (Orange) wide  
*Cryptomeria Radicans*

Red Line  
12 ft New Buffer

4ft Current Buffer

6 ft Center of Buffer



Breakthrough  
Leesgate Road

Leesgate Road

9200 Leesgate Road 7/20/2018

RECEIVED

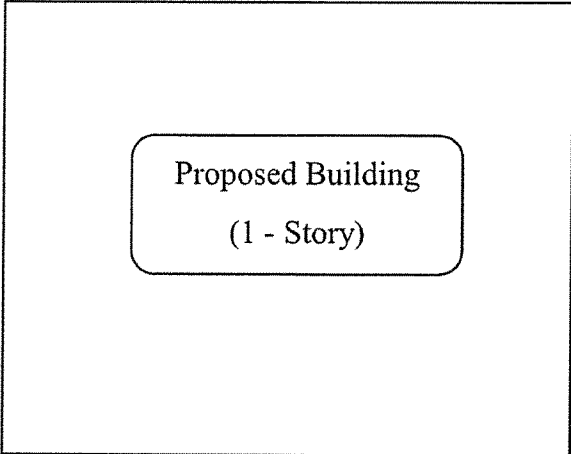
AUG 06 2018

PLANNING &  
DESIGN SERVICES

18 CIP 1054

**12 ft wide Cryptomeria Radicans**  
Total View Blockage – Maximum width  
with every other trimmed tree removed

Additional Parking Spaces  
By diagonal parking off single lane road



Single Row – 12 ft spacing  
12 ft wide Cryptomeria Radicans

Permanent trees  
12 ft (green) wide  
Cryptomeria Radicans

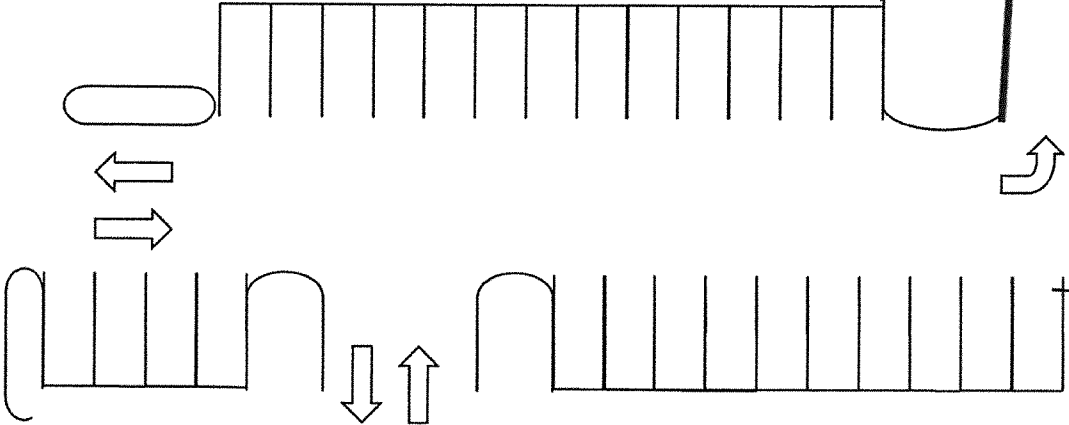
12 ft  
spacing

Removed Trimmed trees  
( see orange in prior slide )  
Cryptomeria Radicans

Red Line  
12 ft New Buffer

4ft Current Buffer

6 ft Center of Buffer



Breakthrough  
Leesgate Road

Leesgate Road

9200 Leesgate Road 7/20/2018

RECEIVED  
AUG 06 2018  
PLANNING &  
DESIGN SERVICES

18 CUP 1054