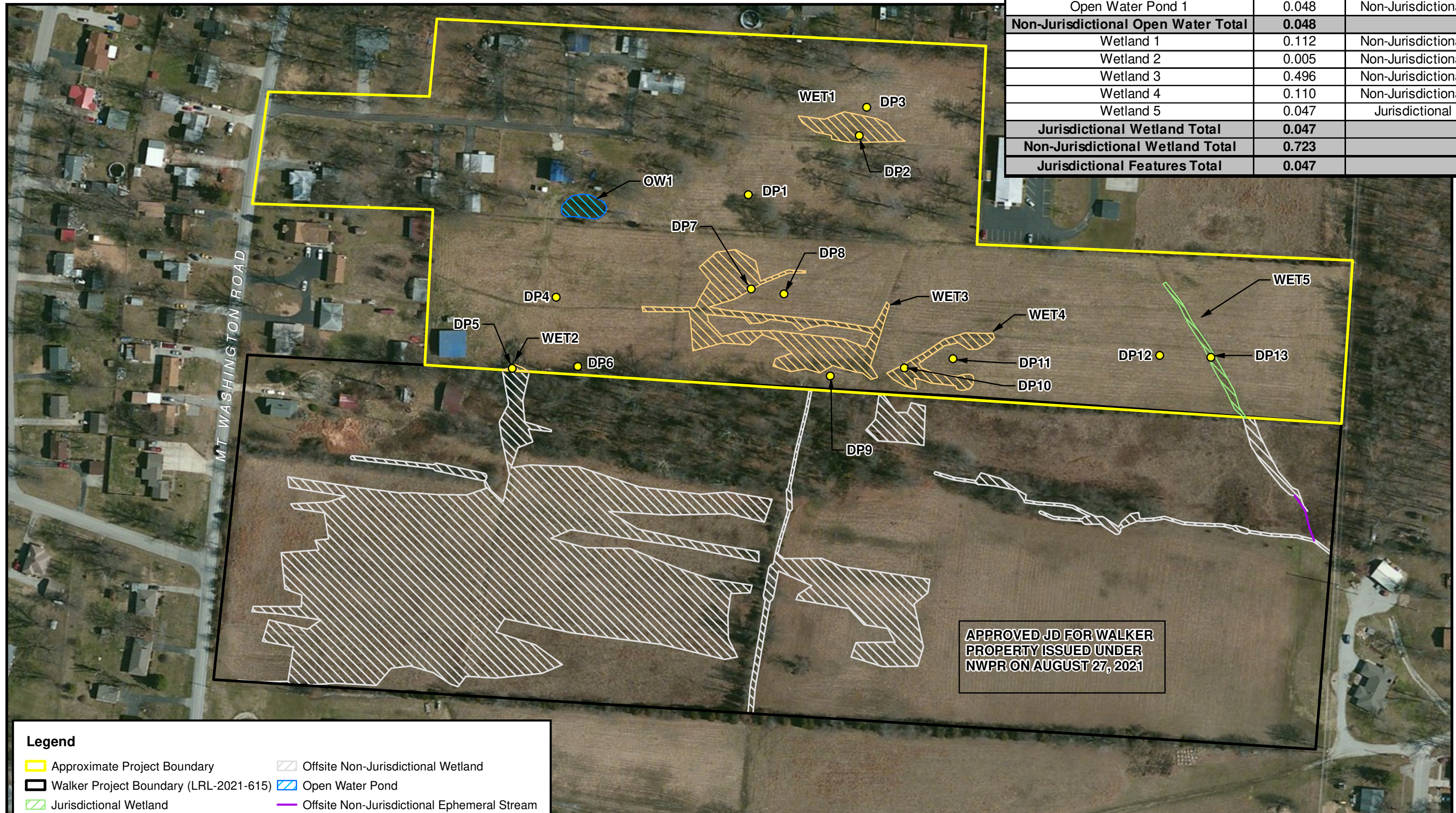


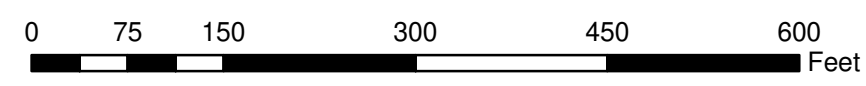
Source: World Imagery Clarity - Esri and the GIS User Community (2019).

Feature	Area (acres)	Federal Status
Open Water Pond 1	0.048	Non-Jurisdictional
Non-Jurisdictional Open Water Total	0.048	
Wetland 1	0.112	Non-Jurisdictional
Wetland 2	0.005	Non-Jurisdictional
Wetland 3	0.496	Non-Jurisdictional
Wetland 4	0.110	Non-Jurisdictional
Wetland 5	0.047	Jurisdictional
Jurisdictional Wetland Total	0.047	
Non-Jurisdictional Wetland Total	0.723	
Jurisdictional Features Total	0.047	

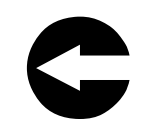


Legend

- Approximate Project Boundary
- Walker Project Boundary (LRL-2021-615)
- Open Water Pond
- Jurisdictional Wetland
- Non-Jurisdictional Wetland
- Offsite Non-Jurisdictional Wetland
- Offsite Non-Jurisdictional Ephemeral Stream
- Wetland Determination Data Point



NOTE: JURISDICTIONAL WATER/WETLAND BOUNDARIES WERE DELINEATED AND SURVEYED BY RES WETLAND SCIENTISTS ON SEPTEMBER 16, 2021. THESE BOUNDARIES HAVE NOT BEEN VERIFIED BY THE U.S. ARMY CORPS OF ENGINEERS. USE OF THIS MAP IS FOR PRELIMINARY PLANNING PURPOSES ONLY.



WILSON PROPERTY
JEFFERSON COUNTY, KENTUCKY

REVISED DATE: 09-23-21 | DRAWN BY: EDB



WATER/WETLAND
LOCATION MAP

FIGURE 3

Received April 25, 2022

Planning & Design Services

21-ZONE-0136

R:\Res\gis\Projects\104210 Walker Property\MXD\Wilson Property Maps\Wilson Water/Wetland Map.mxd, 09-27-2021, temp