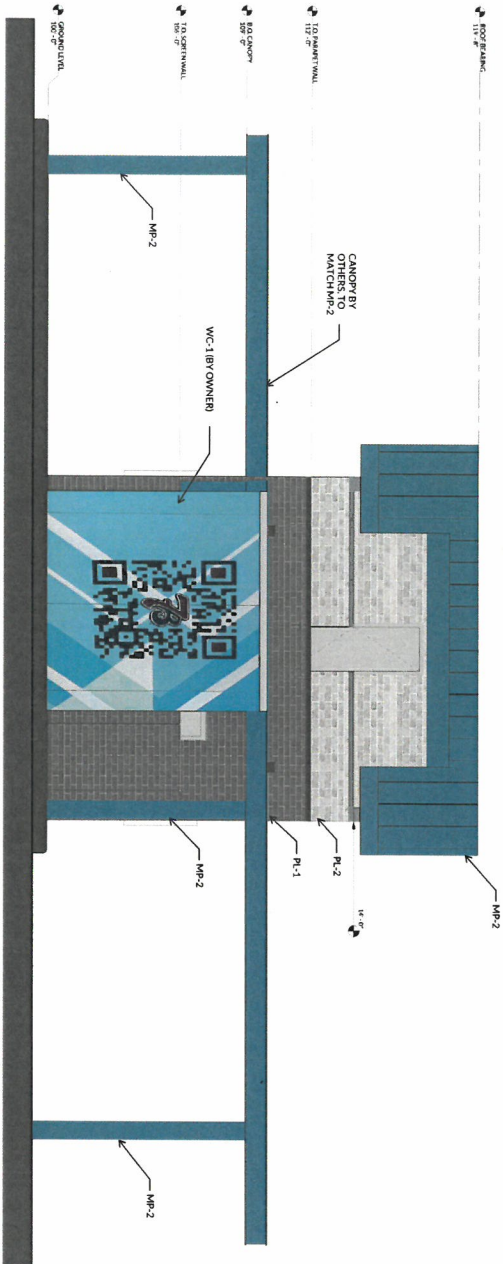
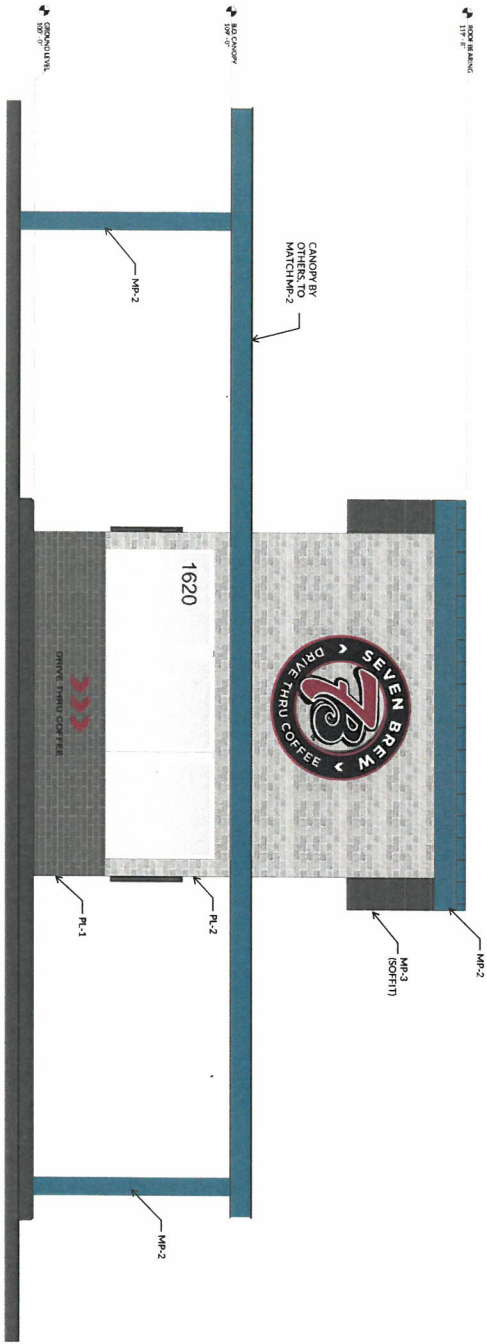


2 EXTERIOR ELEVATION - BACK EAST



1 EXTERIOR ELEVATION - FRONT WEST (BARDSTOWN RD)



Exterior Finish Legend

	R-1 Brick Brick Fiber Cement Panel Midnight
	MP-2 Slate Blue Metal Slatex Slatex Slatex Slatex
	MP-3 Black Metal Slatex Panels
	MP-4 Zinc Gray Baker Metal Brake Metal Cap

RECEIVED

DEC 12 2022

PLANNING & DESIGN SERVICES

22-ZONE-0147

A2.1
EXTERIOR
ELEVATIONS
DATE: MAY 20, 2022

ARCHITECT OF RECORD:
NAME: ADAM KREIER
LICENSE NO. 201100764
PROJECT NUMBER:
22897809
REVISION:

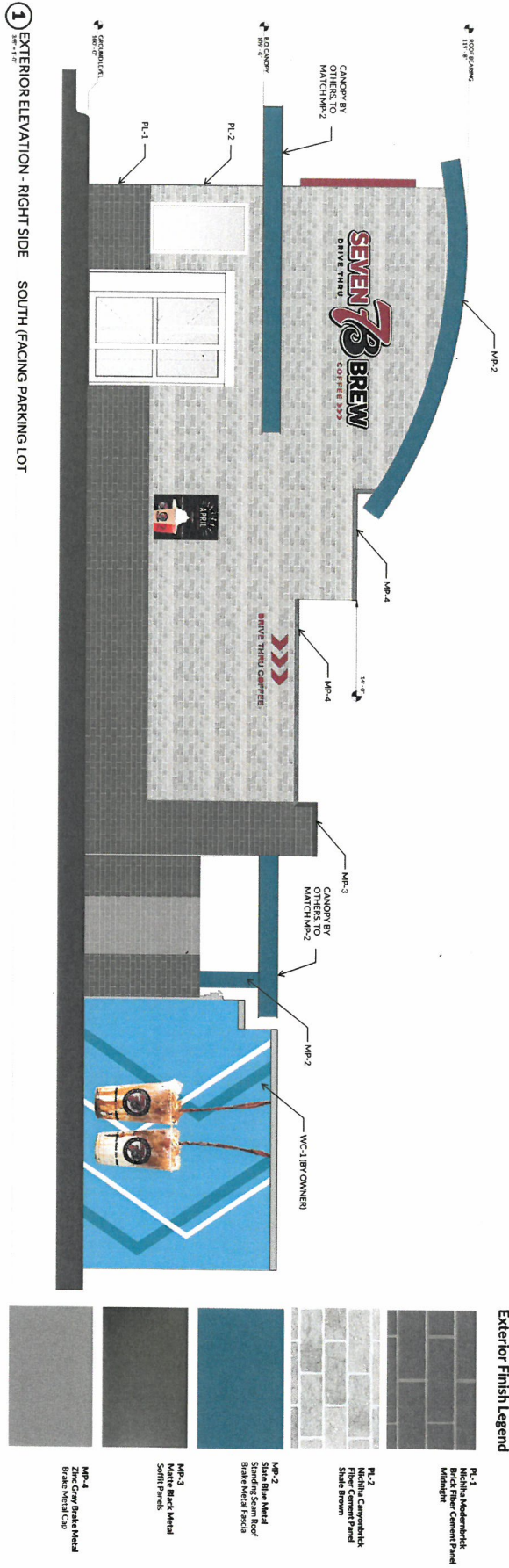
INTENDED FOR RECORD ONLY
This drawing is for record only and is not intended for construction. It is not to be used for any other purpose without the written consent of the architect.

7 BREW COFFEE
O'FALLON, MO

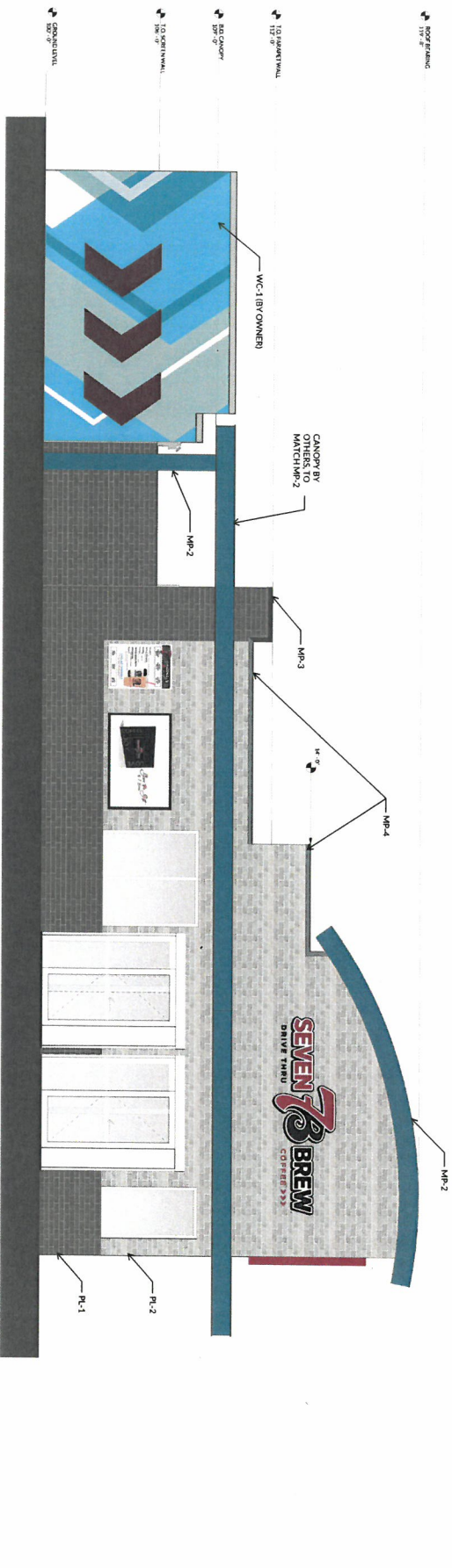
1620 STATE HWY K
O'FALLON, MO

TORGERSON
DESIGN PARTNERS
ARCHITECTURE / REAL ESTATE / DEVELOPMENT

116 NORTH 2ND AVENUE OZARK, MO 65721 P (417) 581-8869 F (417) 581-9002
ARCHITECTURAL CORPORATION MISSOURI LICENSE NUMBER: A 2010011427



1 EXTERIOR ELEVATION - RIGHT SIDE SOUTH (FACING PARKING LOT)



2 EXTERIOR ELEVATION - LEFT SIDE NORTH

Exterior Finish Legend

MP-1	Niche Modernick Brick Fiber Cement Panel
MP-2	Niche Camerick Fiber Cement Panel
MP-3	Slate Blue Metal Standing Seam Roof
MP-4	Zinc Copper/Black Metal Entry Metal Cap
WC-1	BY OWNER
PL-1	Zinc Copper

7 BREW COFFEE
O'FALLON MO

1620 STATE HWY K
O'FALLON, MO

TORGERSON
DESIGN PARTNERS
ARCHITECTURE / REAL ESTATE / DEVELOPMENT

116 NORTH 2ND AVENUE OZARK MO 65721 P (417) 581-8689 F (417) 581-9002
ARCHITECTURAL CORPORATION MISSOURI LICENSE NUMBER: A 2010011427

INITIAL REVIEW ONLY
These drawings are preliminary and are intended for regulatory approval only. They are not to be used for construction purposes.

ARCHITECT OF RECORD:
NAME: ADAM KRIEGER
LICENSE NO.: 2011007744
PROJECT NUMBER:
220897820P
REVISION:

A2.2
EXTERIOR
ELEVATIONS
DATE: MAY 23, 2022

PLANNING & DESIGN
SERVICES

DEC 12 2022

RECEIVED

22-ZONE-0147