





The Miracle League of Louisville is a baseball league and playground complex for children and adults with physical, cognitive, and/or emotional challenges. The Miracle League removes the barriers that keep players with special needs off the baseball field and lets them experience the joy of playing on an organized team.

Prior to June 15th of this year, Louisville was the largest city in the country without a Miracle League. In our first year, 103 players ranging in age from 5 to 56 played Miracle League baseball together. Of those 103 players, there were 28 different diagnosed special needs and medical conditions represented in the league.

The league is a proud picture of diversity in age, race, gender and abilities. Each Saturday this group played together on their baseball teams with the assistance of over 120 volunteers, providing parents an opportunity to enjoy watching their child play safely. Since opening in June, the Miracle League of Louisville has built community among the families of players and volunteers.

In the Miracle League of Louisville, no child is excluded due to financial considerations – we allow everyone to play. Each player has an on-field “buddy” to assist, support and keep players safe. The adjacent, fully inclusive playground brings children, adults, families and the community to the Miracle League for a common goal...to play together.

Miracle League Information Points

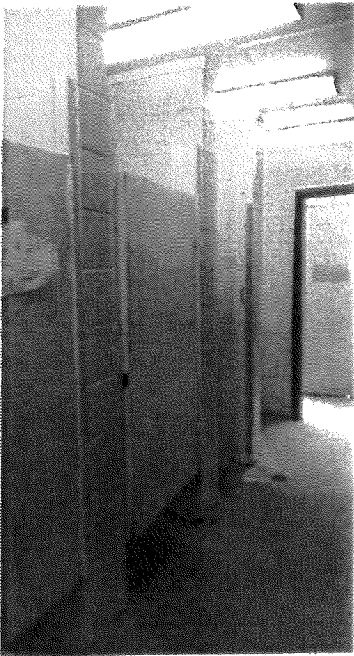
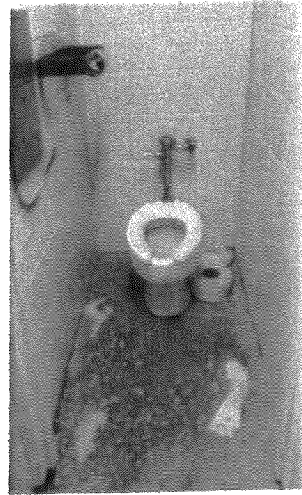
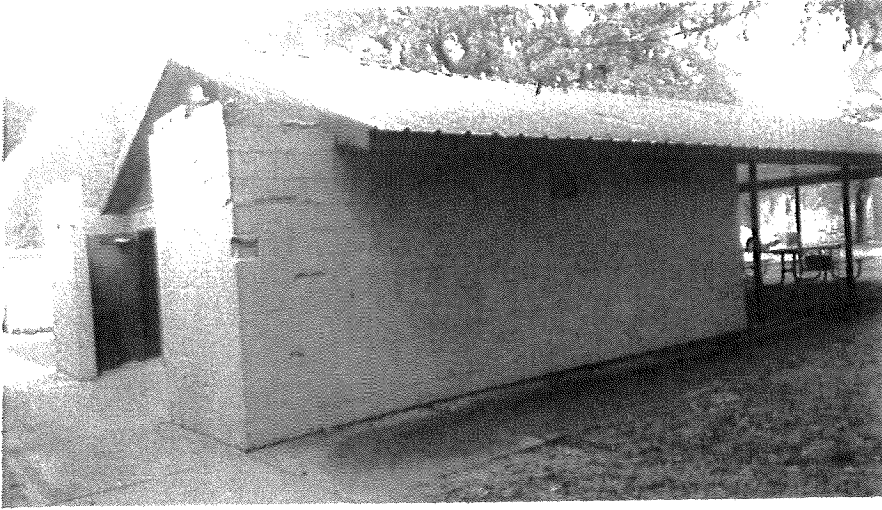
- Summer 2019 season featured six teams and a total of 68 players; Fall season had 83 players
- 103 unique participants: Fall season had 35 new players that did not participate in the summer and 48 returning players that participated in the summer session
- 103 players represented 38 unique zip codes of home residence
- Players ranged in age from 5 to 56
- 77 male players; 26 female players
- 72 caucasian players (70%); 25 African-American (24%); 4 Hispanic (4%); 2 Other (2%)
- 28 special needs / medical conditions represented: 49XXXXY Syndrome, Autism, ADHD, Anxiety, Cerebral Palsy, Charcot-Marie-Tooth Disease, Cystic Fibrosis, Down Syndrome, Diabetes Insipidus, Duchene Muscular Dystrophy, Epilepsy, Hydrocephalus, Mental Developmental Delay, paraplegia, prosthetic limb, seizures, Smith Magenis Syndrome, Spinal Cord Injury, Spina Bifida, stroke survivor, visual impairment, Wiedemann-Steiner Syndrome
- 17 of 103 players (16.5%) received financial assistance from the league and played for free
- Baseball gloves and bats were provided for each player to use at no costs to families
- Over 150 volunteers worked as on-field buddies, coaches, dugout moms, PA announcers, concession stand operators, umpires, advocates of the league
- With combined visitors from Miracle League baseball games, Fern Creek baseball and tournaments, Fern Creek Elementary students and general community use, it is estimated that the Miracle League playground will host over 20,000 visitors is 2019

Miracle League Team Members by Zip Code:

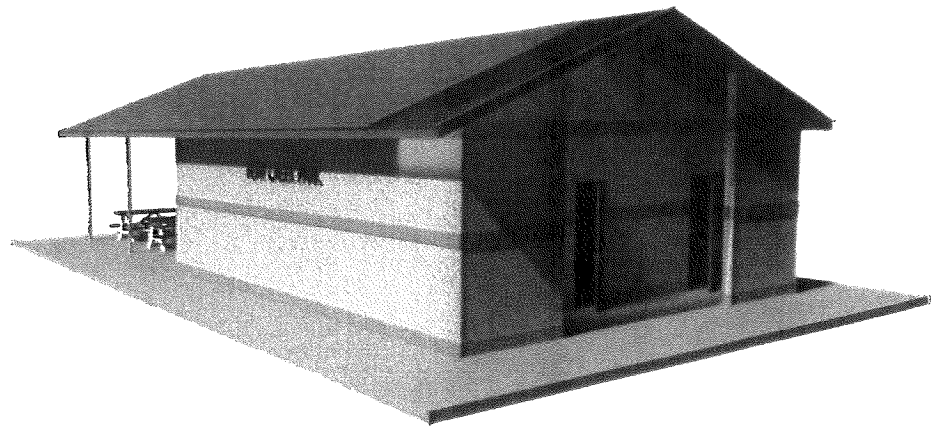
In 2019, the Miracle League's first year in Louisville, players came from 22 zip codes. These zip codes include almost every Louisville Metro Council District! We look forward to seeing this number grow each year as more families learn about the Miracle League of Louisville.

| Zip Code | Players | Council District |
|-----------------|----------------|---|
| 40118 | 1 | Fox 13 |
| 40203 | 4 | Sexton Smith 4, Purvis 5, James 6 |
| 40206 | 1 | Sexton Smith 4, Hollander 9 |
| 40207 | 2 | McCraney 7, Hollander 9, Reed 16, Ackerson 26 |
| 40213 | 2 | Shanklin 2, Mulvihill 10, George 21 |
| 40214 | 3 | Blackwell 12, Fox 3, Triplett 15, George 21, Yates 25 |
| 40215 | 1 | Dorsey 3, James 6, Triplett 15 |
| 40216 | 3 | Green 1, Dorsey 3, Blackwell 12, Triplett 15 |
| 40218 | 7 | Shanklin 2, Mulvihill 10, Ackerson 26 |
| 40219 | 2 | Shanklin 2, Fox 13, Peden 23, Flood 24 |
| 40220 | 6 | Kramer 11, Parker 18, Ackerson 26 |
| 40222 | 2 | McCraney 7, Parker 18 |
| 40228 | 7 | Shanklin 2, Engel 22, Peden 23, Flood 24 |
| 40229 | 5 | Fox 13, Peden 23, Flood 24 |
| 40241 | 1 | McCraney 7, Reed 16, Winkler 17 |
| 40242 | 3 | McCraney, Winkler 17, Parker 18 |
| 40243 | 1 | Piagentini 19, Benson 20 |
| 40245 | 5 | Reed 16, Winkler 17, Piagentini 19, Benson 20 |
| 40258 | 1 | Green 1, Blackwell 12, Fowler 14, Yates 25 |
| 40272 | 2 | Blackwell 12, Fox 13, Fowler 14, Yates 25 |
| 40291 | 7 | Benson 20, Engel 22, Shanklin 2, Peden 23 |
| 40299 | 6 | Benson 20, Kramer 11, Engel 22 |

Current Fern Creek Park Bathroom Conditions



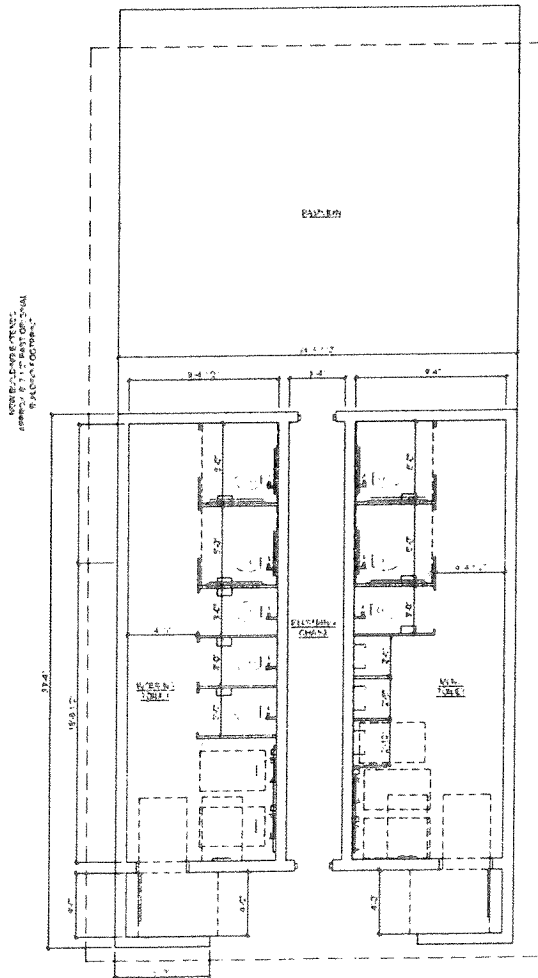
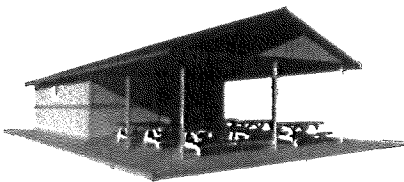
**Future Fern Creek Park ADA Compliant
Bathroom Rebuild Plan**



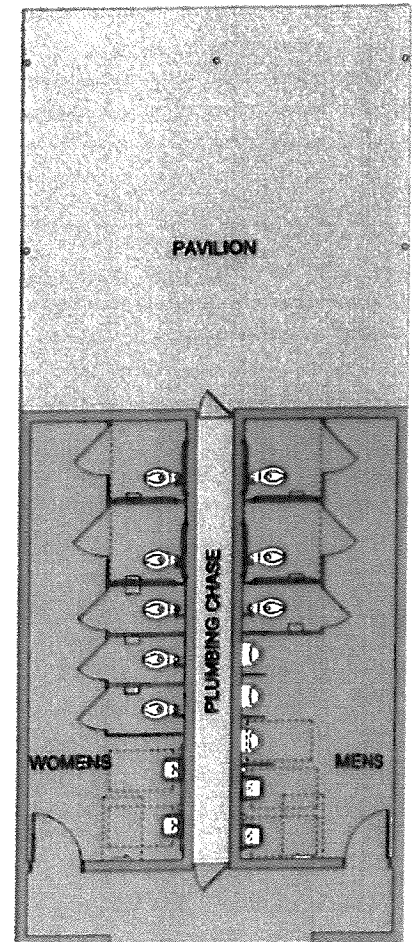
- More stalls and fixtures than existing
- Fully ADA compliant
- (2) ADA stalls in each
- All new fixtures
- Exterior aesthetic improved - will better match newly built athletic complex
- Could possibly reuse existing trusses to reduce cost



NORTH VIEW



FLOOR PLAN



COLORED FLOOR PLAN

KEYES ARCHITECTS & ASSOCIATES
3005 TAYLOR BOULEVARD
LOUISVILLE, KENTUCKY 40208 (502) 636-5113
<http://www.keyesarchitects.com>