

# Case No. 14STREETS1006

## Meredith Dunn School



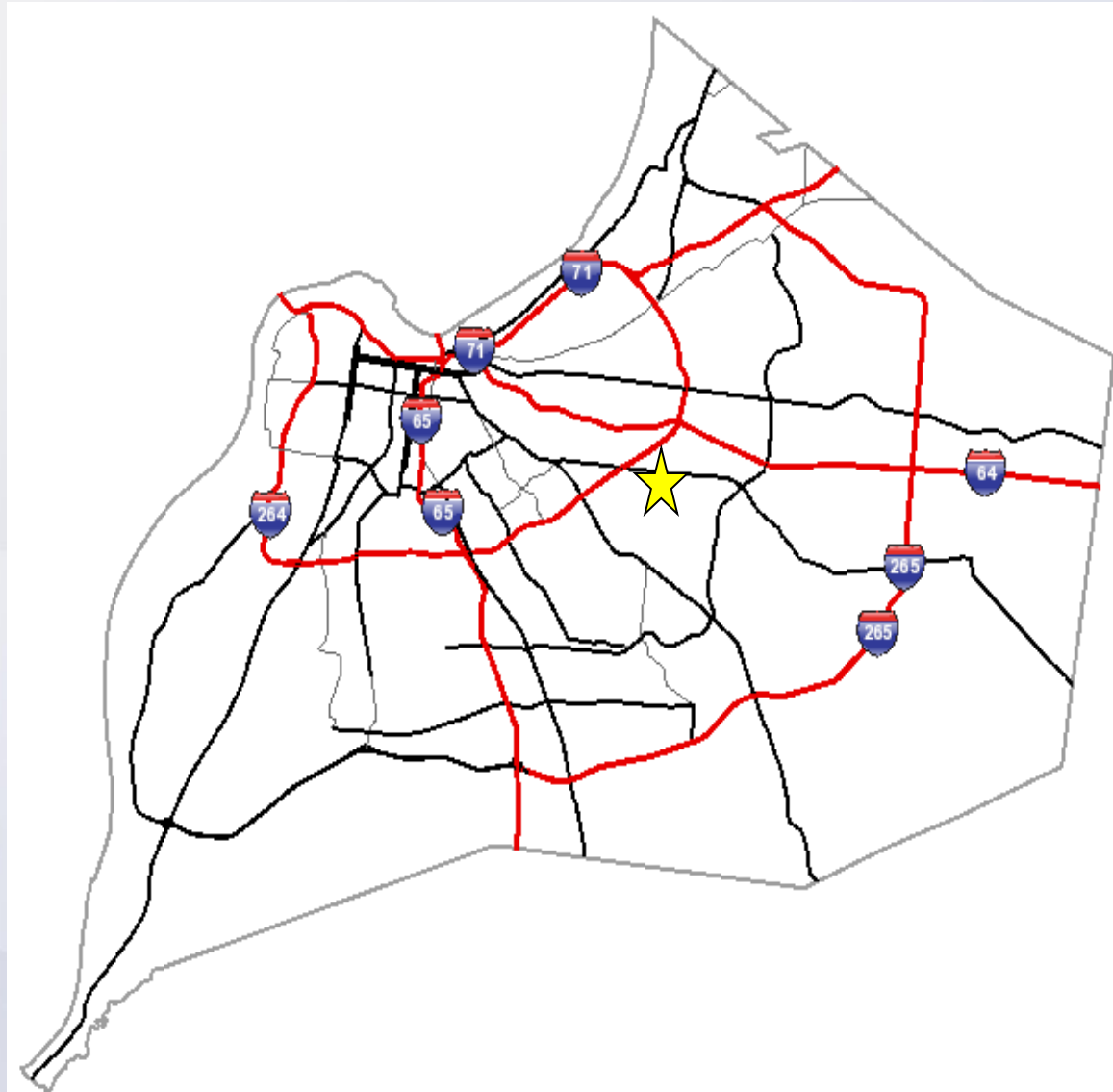
Planning/Zoning, Land Design & Development  
February 3, 2015

# Case Summary / Background

- Street Closure of Rosemont Ave
  - From Midland Ave to west approx. 445 ft

# Location

- Rosemont Ave
- Council District  
26 - Brent Ackerson



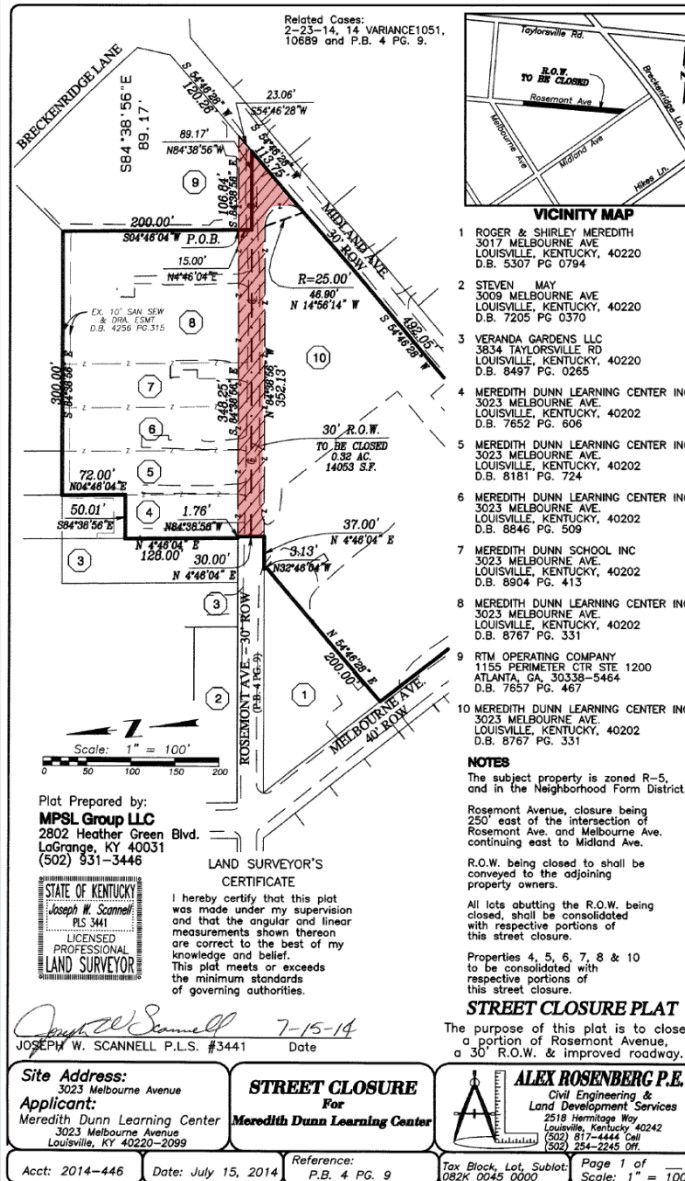
# Aerial Photo



# Aerial -Surrounding Areas



# Applicant's Development Plan



# PC Recommendation

- Public Hearing was held on 12/18/2014
  - No one spoke in opposition to the request.
- The Commission made sufficient findings that the proposal complies with the Comprehensive Plan-Cornerstone 2020
- The Commission unanimously recommended approval of the rezoning to Louisville Metro Council (8 members voted)