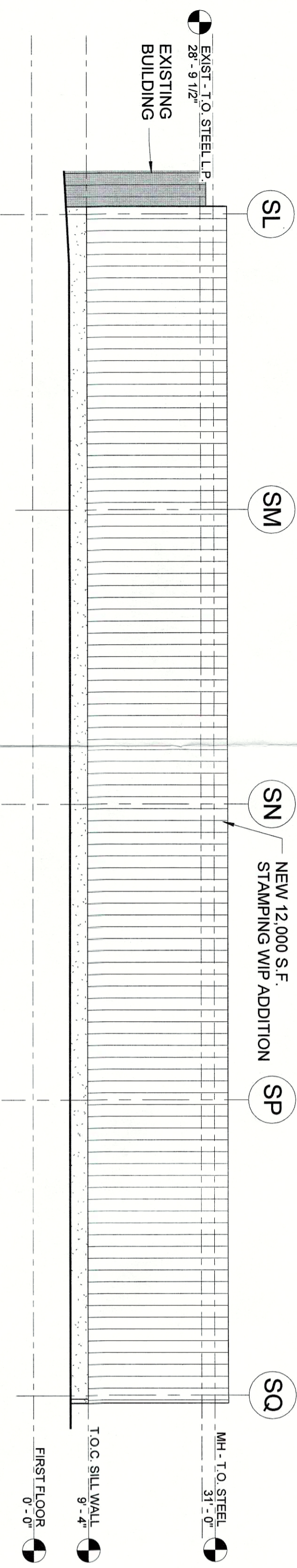
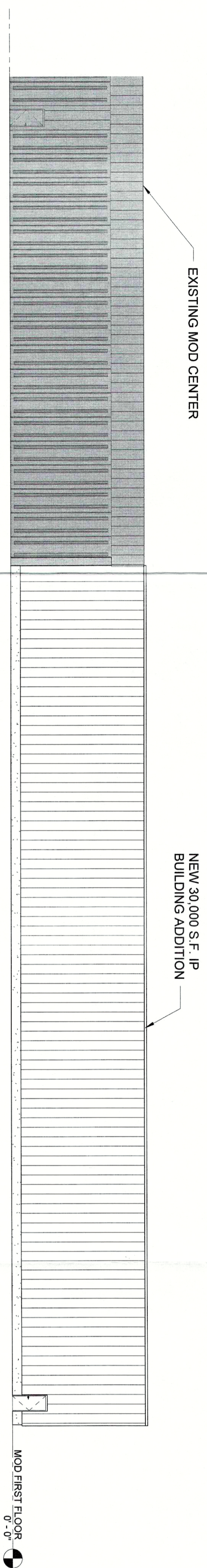


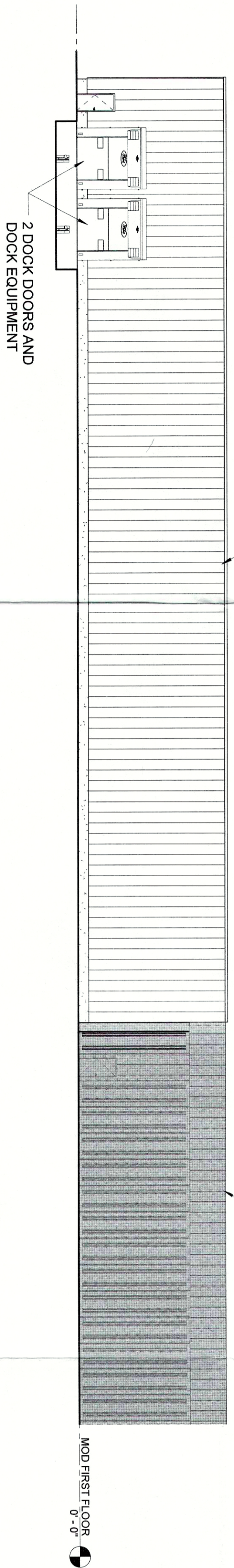
1 2,500 S.F. MATERIAL HANDLING ADDITION - NORTH ELEVATION



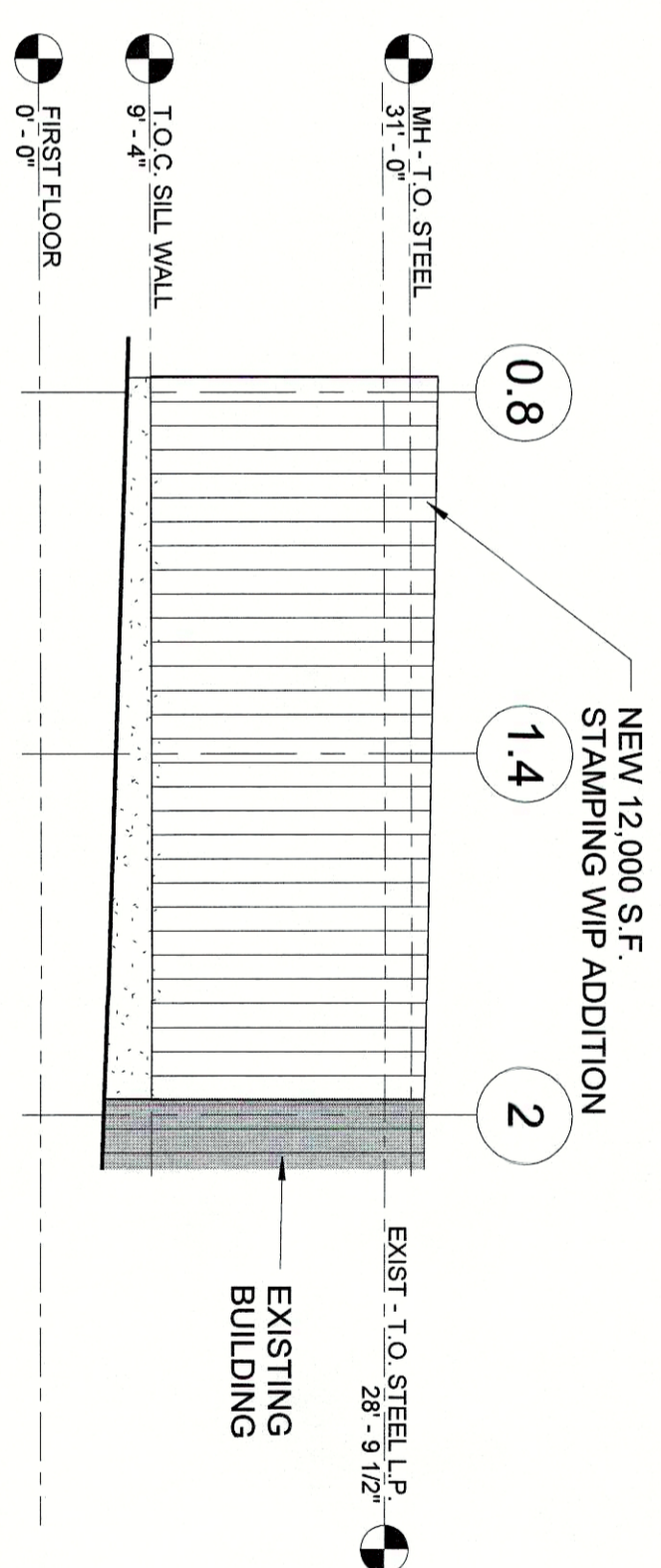
2 12,000 S.F. STAMPING WIP ADDITION - EAST ELEVATION



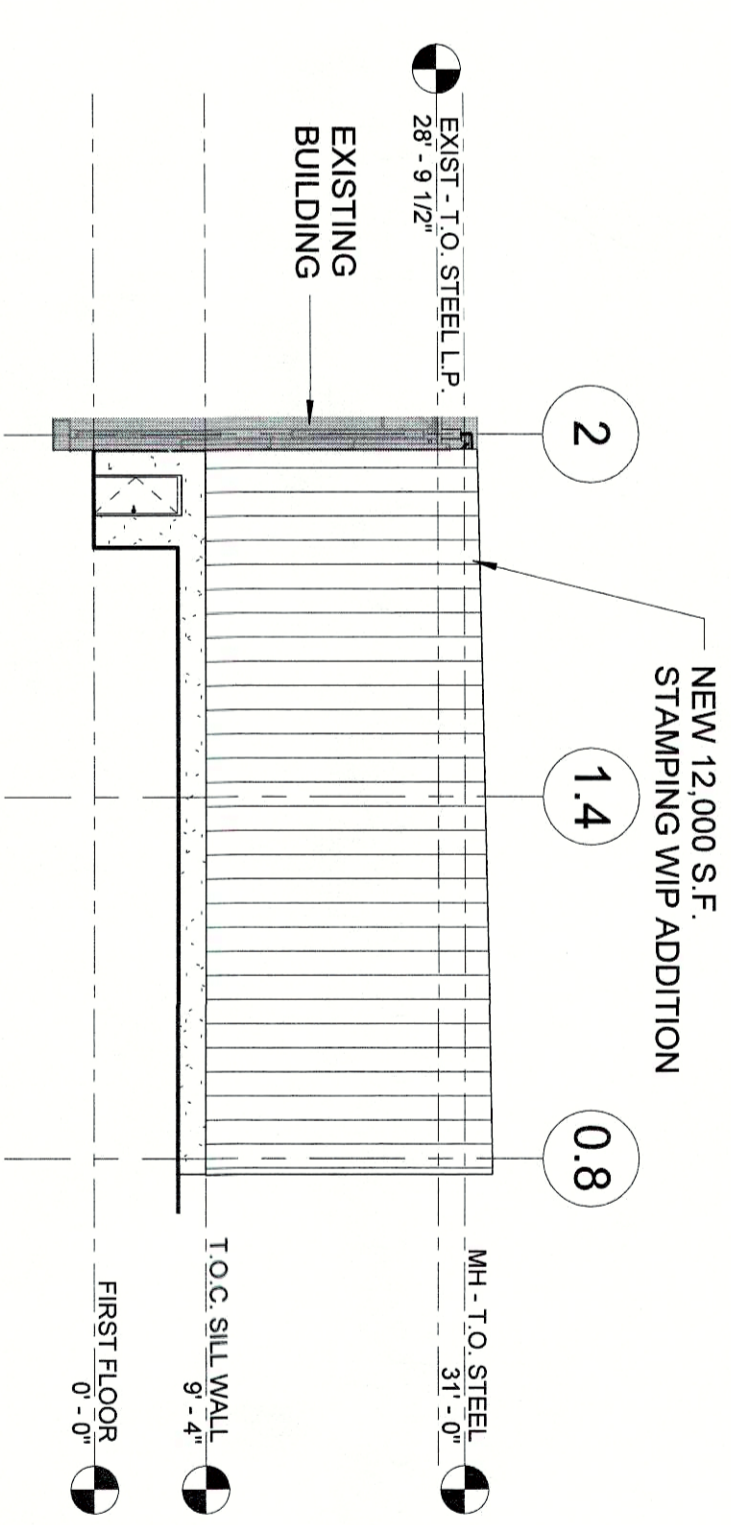
5 30,000 S.F. IP BUILDING ADDITION - NORTH ELEVATION



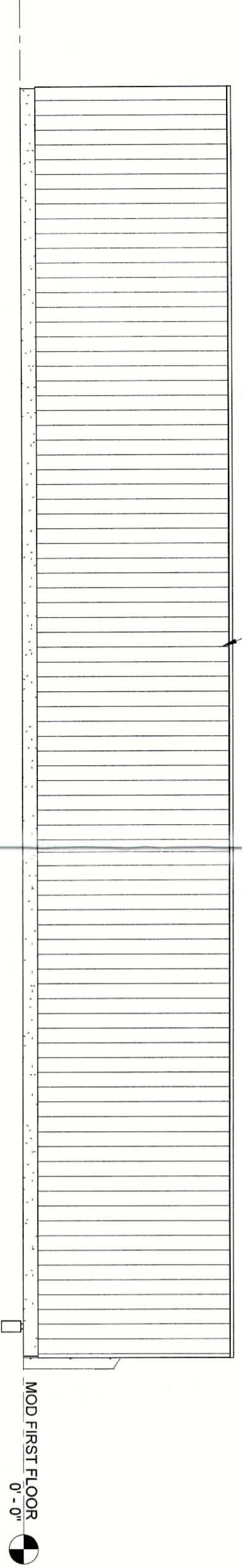
6 30,000 S.F. IP BUILDING ADDITION - SOUTH ELEVATION



3 12,000 S.F. STAMPING WIP ADDITION - NORTH ELEVATION



4 12,000 S.F. STAMPING WIP ADDITION - SOUTH ELEVATION



7 30,000 S.F. IP BUILDING ADDITION - WEST ELEVATION

RECEIVED
JUL 01 2016
LUCCKETT & FARLEY
DESIGN SERVICES

FORDLAND
330 TOWN CENTER DRIVE, SUITE 1100
DEARBORN, MICHIGAN 48126-2738
USA

KENTUCKY TRUCK PLANT
LOUISVILLE, KENTUCKY

smart designSM
Luckett & Farley
© 2015
737 South Third Street, Louisville, Kentucky 40202-2100
502.586.4181 502.897.0488 Fax www.luckettfarley.com
Master Planning | Architecture | Engineering | Interior Design
Design Build | Building Commissioning | Special Inspections

SEAL

30,000 S.F. IP BUILDING ADDITION

2,500 MATERIAL HANDLING ADDITION

12,000 S.F. STAMPING WIP ADDITION

N KEY PLAN
SCALE: NONE

#	REVISIONS	DESCRIPTION	DATE

A/E COMMISSION NO.: 2016.111
DATE: 7/1/2016
DRAWN BY: Author
DESIGNED BY: Designer
CHECKED BY: Checker
APPROVED BY: Approver
SHEET TITLE:
BUILDING ELEVATIONS
SHEET NO.: 1-A0.1