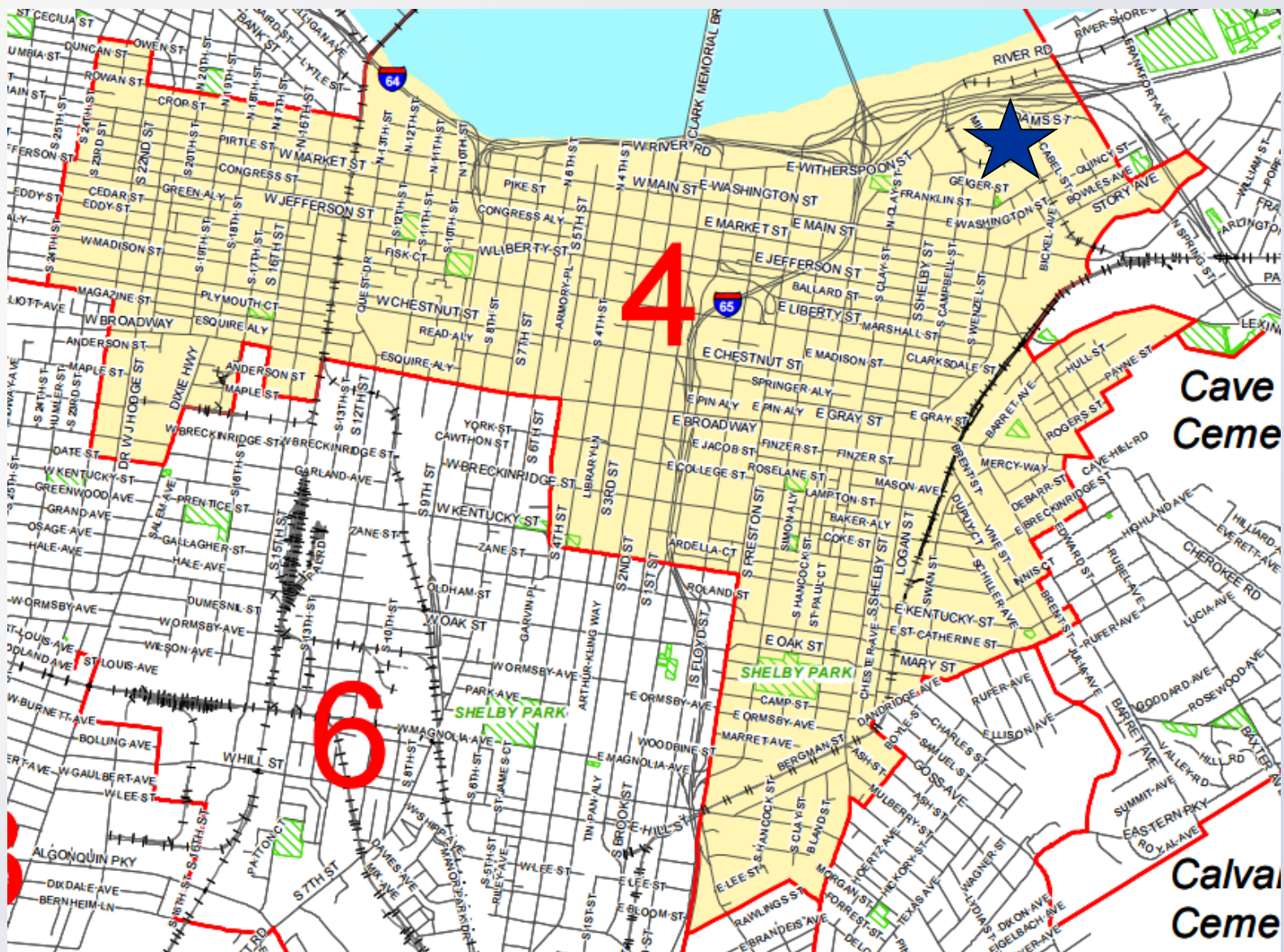


17ZONE1050

Louisville City FC

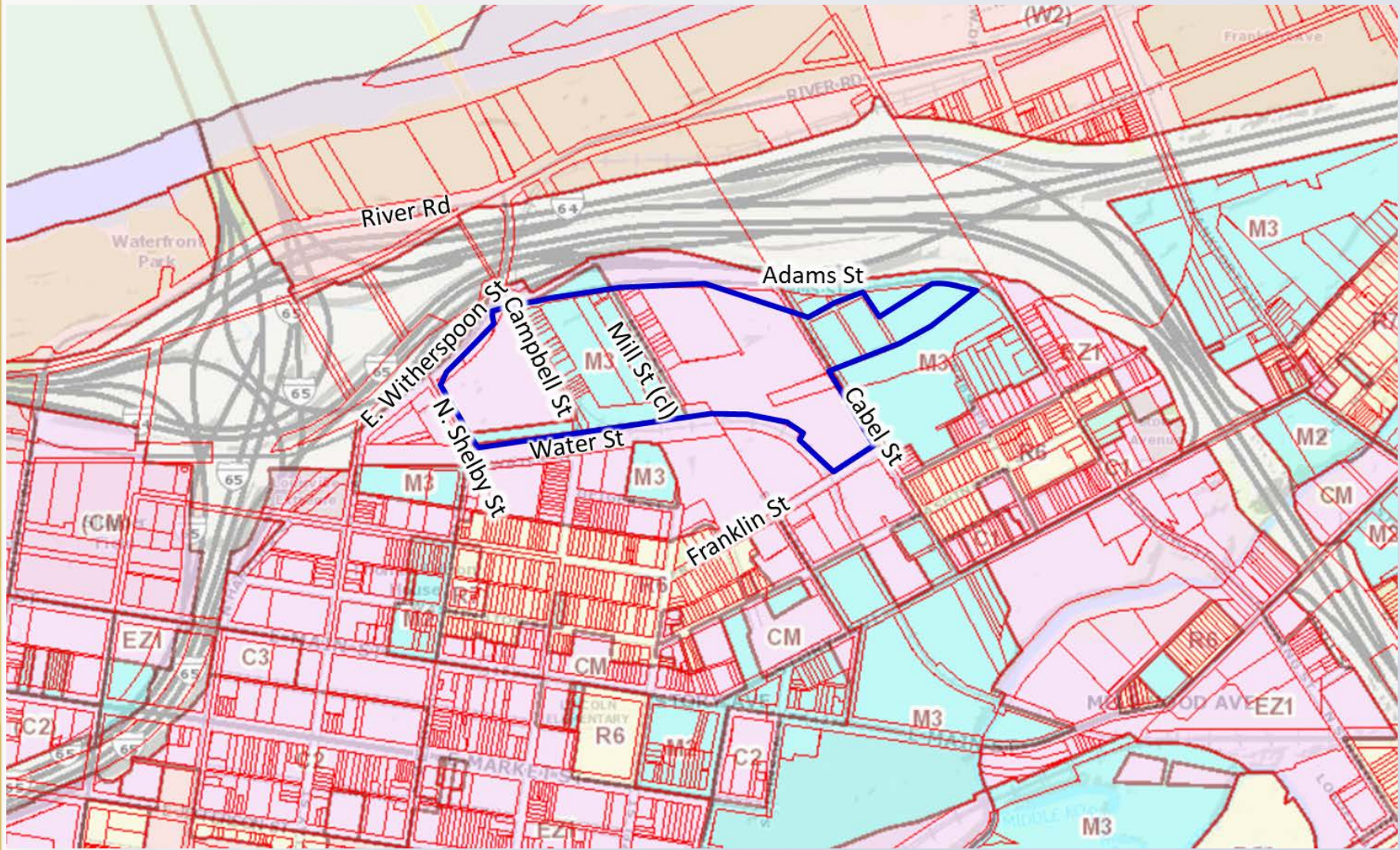


Planning/Zoning, Land Design & Development
February 27, 2018





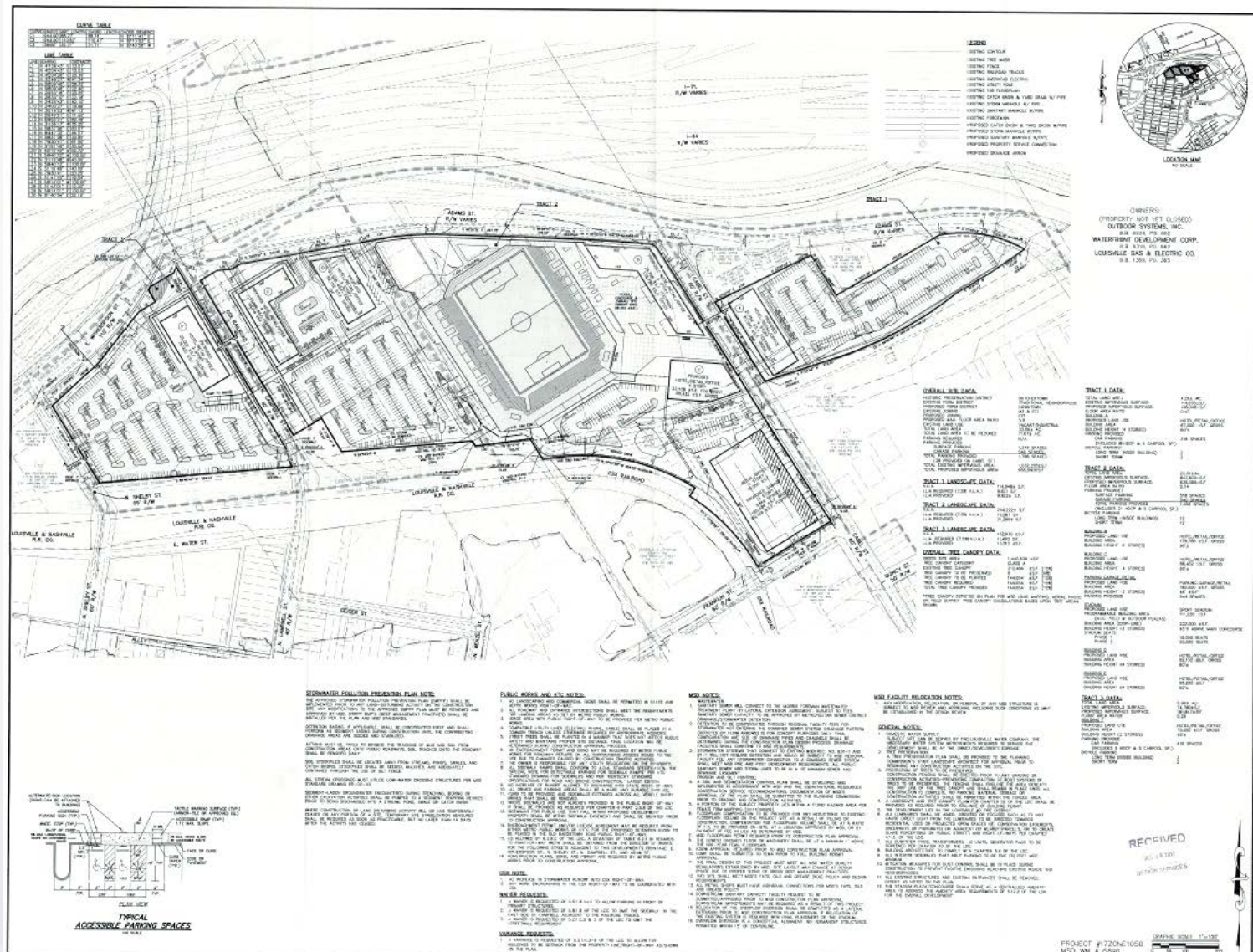




Existing: M-3 & EZ-1 / TN
Proposed: EZ-1 / DT

Total Land Area: 33.06 Acres
Total Area Rezoned: 11.67 Acres

Total Parking: 1,786
Surface Parking: 1,246
Parking Garage: 540



OWNER

LINE	THICKNESS	DESCRIPTION
1	0.125"	CONCRETE
2	0.125"	CONCRETE
3	0.125"	CONCRETE
4	0.125"	CONCRETE
5	0.125"	CONCRETE
6	0.125"	CONCRETE
7	0.125"	CONCRETE
8	0.125"	CONCRETE
9	0.125"	CONCRETE
10	0.125"	CONCRETE
11	0.125"	CONCRETE
12	0.125"	CONCRETE
13	0.125"	CONCRETE
14	0.125"	CONCRETE
15	0.125"	CONCRETE
16	0.125"	CONCRETE
17	0.125"	CONCRETE
18	0.125"	CONCRETE
19	0.125"	CONCRETE
20	0.125"	CONCRETE
21	0.125"	CONCRETE
22	0.125"	CONCRETE
23	0.125"	CONCRETE
24	0.125"	CONCRETE
25	0.125"	CONCRETE
26	0.125"	CONCRETE
27	0.125"	CONCRETE
28	0.125"	CONCRETE
29	0.125"	CONCRETE
30	0.125"	CONCRETE
31	0.125"	CONCRETE
32	0.125"	CONCRETE
33	0.125"	CONCRETE
34	0.125"	CONCRETE
35	0.125"	CONCRETE
36	0.125"	CONCRETE
37	0.125"	CONCRETE
38	0.125"	CONCRETE
39	0.125"	CONCRETE
40	0.125"	CONCRETE
41	0.125"	CONCRETE
42	0.125"	CONCRETE
43	0.125"	CONCRETE
44	0.125"	CONCRETE
45	0.125"	CONCRETE
46	0.125"	CONCRETE
47	0.125"	CONCRETE
48	0.125"	CONCRETE
49	0.125"	CONCRETE
50	0.125"	CONCRETE
51	0.125"	CONCRETE
52	0.125"	CONCRETE
53	0.125"	CONCRETE
54	0.125"	CONCRETE
55	0.125"	CONCRETE
56	0.125"	CONCRETE
57	0.125"	CONCRETE
58	0.125"	CONCRETE
59	0.125"	CONCRETE
60	0.125"	CONCRETE
61	0.125"	CONCRETE
62	0.125"	CONCRETE
63	0.125"	CONCRETE
64	0.125"	CONCRETE
65	0.125"	CONCRETE
66	0.125"	CONCRETE
67	0.125"	CONCRETE
68	0.125"	CONCRETE
69	0.125"	CONCRETE
70	0.125"	CONCRETE
71	0.125"	CONCRETE
72	0.125"	CONCRETE
73	0.125"	CONCRETE
74	0.125"	CONCRETE
75	0.125"	CONCRETE
76	0.125"	CONCRETE
77	0.125"	CONCRETE
78	0.125"	CONCRETE
79	0.125"	CONCRETE
80	0.125"	CONCRETE
81	0.125"	CONCRETE
82	0.125"	CONCRETE
83	0.125"	CONCRETE
84	0.125"	CONCRETE
85	0.125"	CONCRETE
86	0.125"	CONCRETE
87	0.125"	CONCRETE
88	0.125"	CONCRETE
89	0.125"	CONCRETE
90	0.125"	CONCRETE
91	0.125"	CONCRETE
92	0.125"	CONCRETE
93	0.125"	CONCRETE
94	0.125"	CONCRETE
95	0.125"	CONCRETE
96	0.125"	CONCRETE
97	0.125"	CONCRETE
98	0.125"	CONCRETE
99	0.125"	CONCRETE
100	0.125"	CONCRETE



OWNERS:
 PROPERTY NOT SET (L1000)
 OUTDOOR SYSTEMS, INC.
 2014 W. MARKET ST.
 LOUISVILLE, KY 40202



DEVELOPER:
 LOUISVILLE CITY FC
 1000 W. MARKET ST.
 LOUISVILLE, KY 40202

OWNER:
 LOUISVILLE CITY FC - STADIUM DISTRICT
 1000 W. MARKET ST.
 LOUISVILLE, KY 40202

PROJECT #1720E1050
MSD VML & GORR



Sheet
1





 METRO
Louisville

Public Meetings

- Neighborhood Meeting on 10/26/17
 - Held by applicant
- LD&T meeting on 01/11/2018
- Planning Commission public hearing on 02/01/2018

Planning Commission

- Planning Commission public hearing on 02/01/2018
 - No one spoke in opposition.
 - The Commission recommended approval of the change in zoning with a vote of 7-0. 3 members were not present.