



THE McMAHAN GROUP

---

# THE McMAHAN GROUP

## CHAMBERLAIN WOODS OFFICE PARK

Louisville, KY

04 JANUARY 2021



RECEIVED

JAN 04 2021

PLANNING & DESIGN  
SERVICES



TEG ARCHITECTS  
DESIGN CHANGES LIVES

20-ZONE-0078

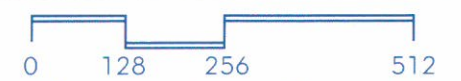


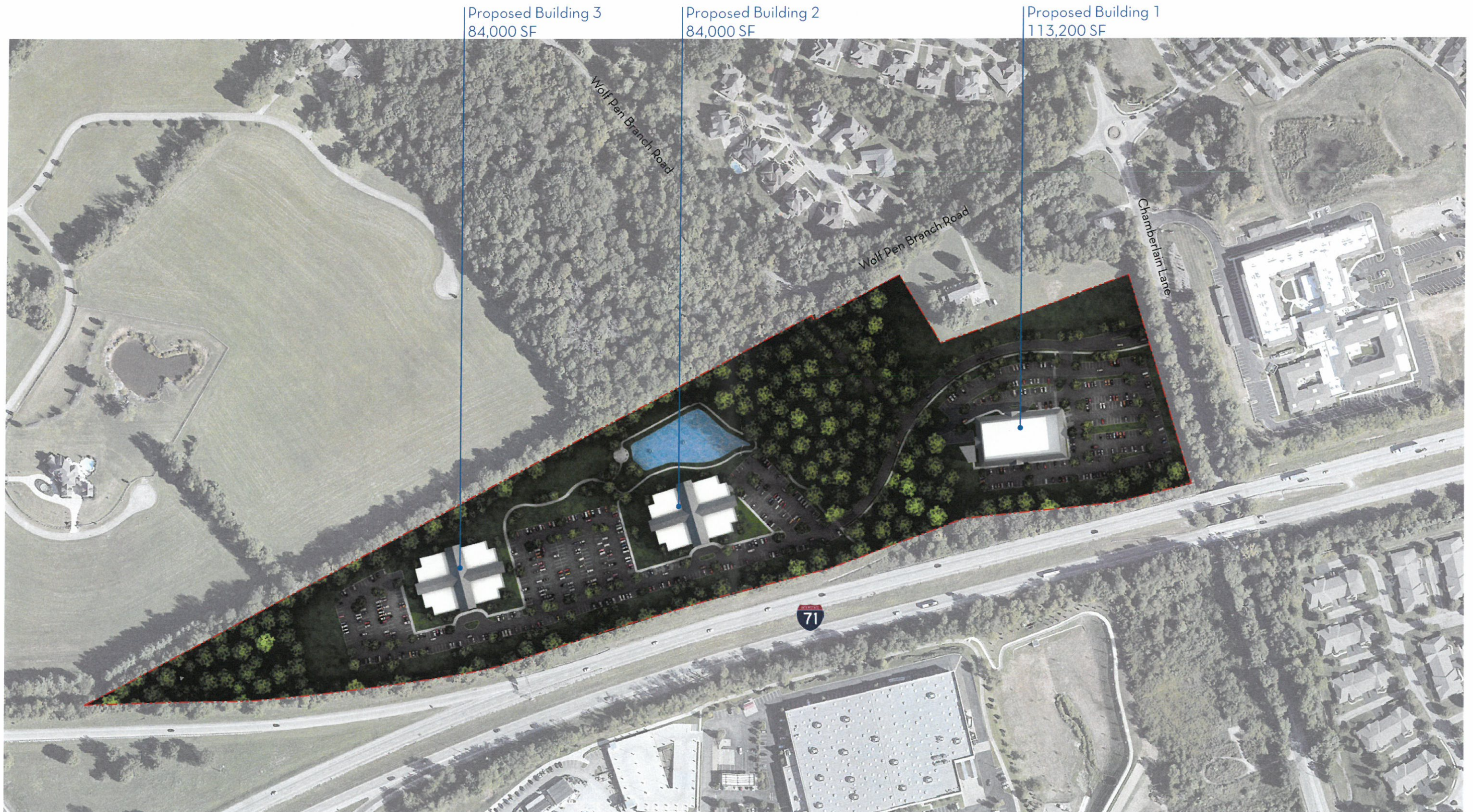
Site Plan - Existing

RECEIVED

JAN 04 2021

PLANNING & DESIGN SERVICES





Proposed Building 3  
84,000 SF

Proposed Building 2  
84,000 SF

Proposed Building 1  
113,200 SF

Wolf Pen Branch Road

Wolf Pen Branch Road

Chamberlain Lane

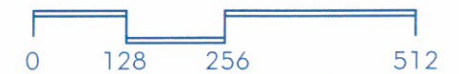
71

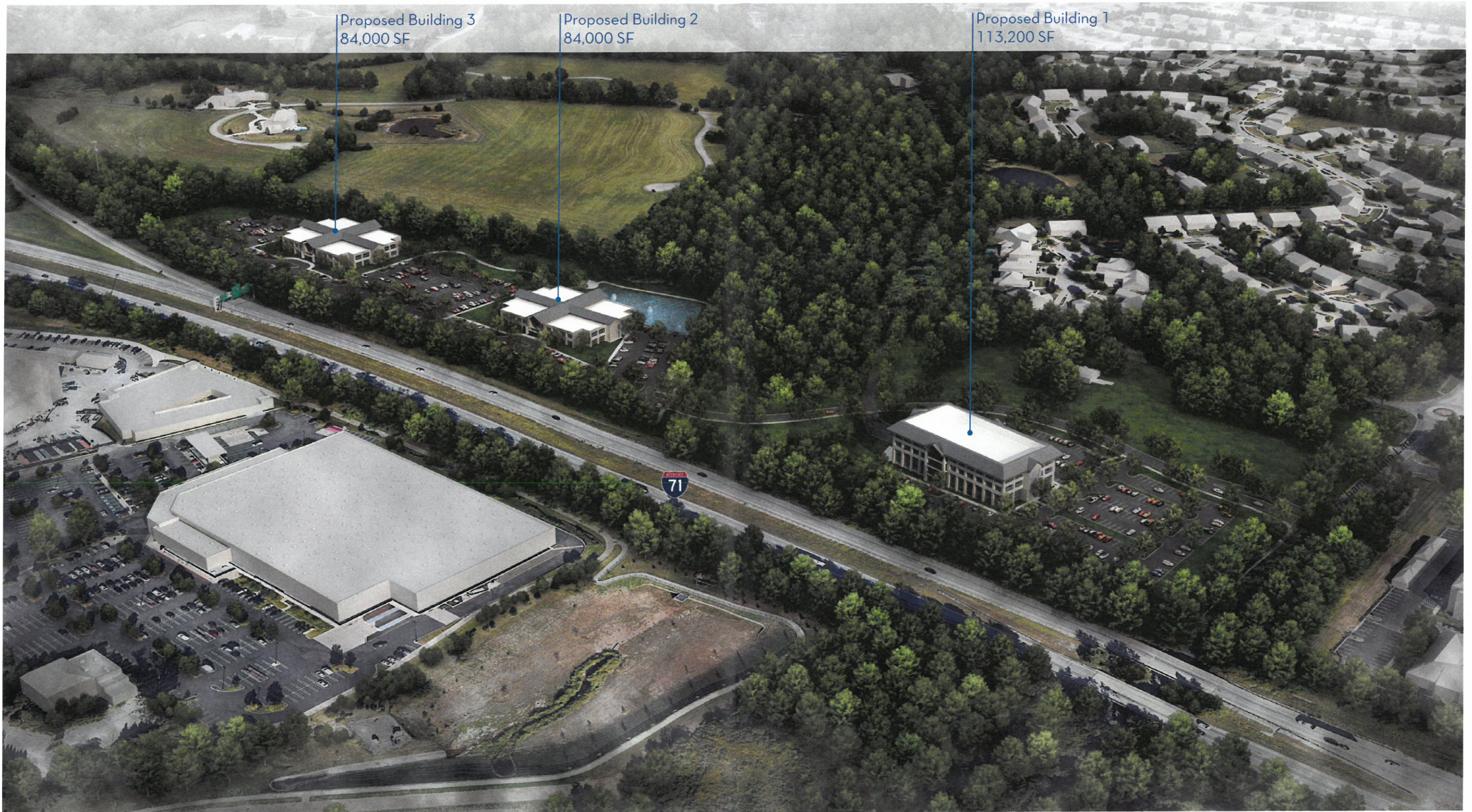
Site Plan - Proposed

RECEIVED

JAN 04 2021

PLANNING & DESIGN  
SERVICES





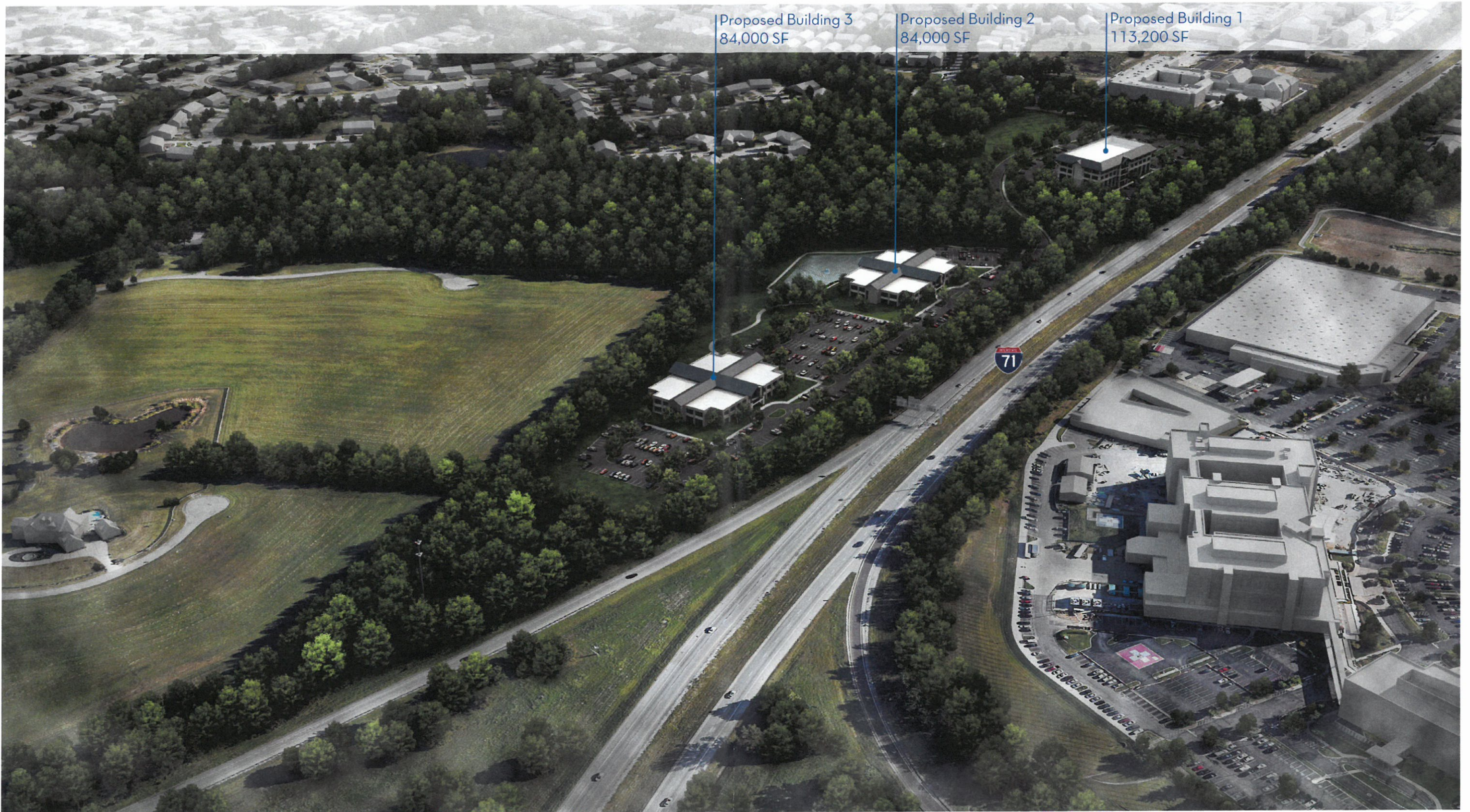
Aerial View from Southeast - Proposed

RECEIVED

JAN 04 2021

PLANNING & DESIGN  
SERVICES





Aerial View from Southwest - Proposed

RECEIVED

JAN 04 2021

PLANNING & DESIGN  
SERVICES



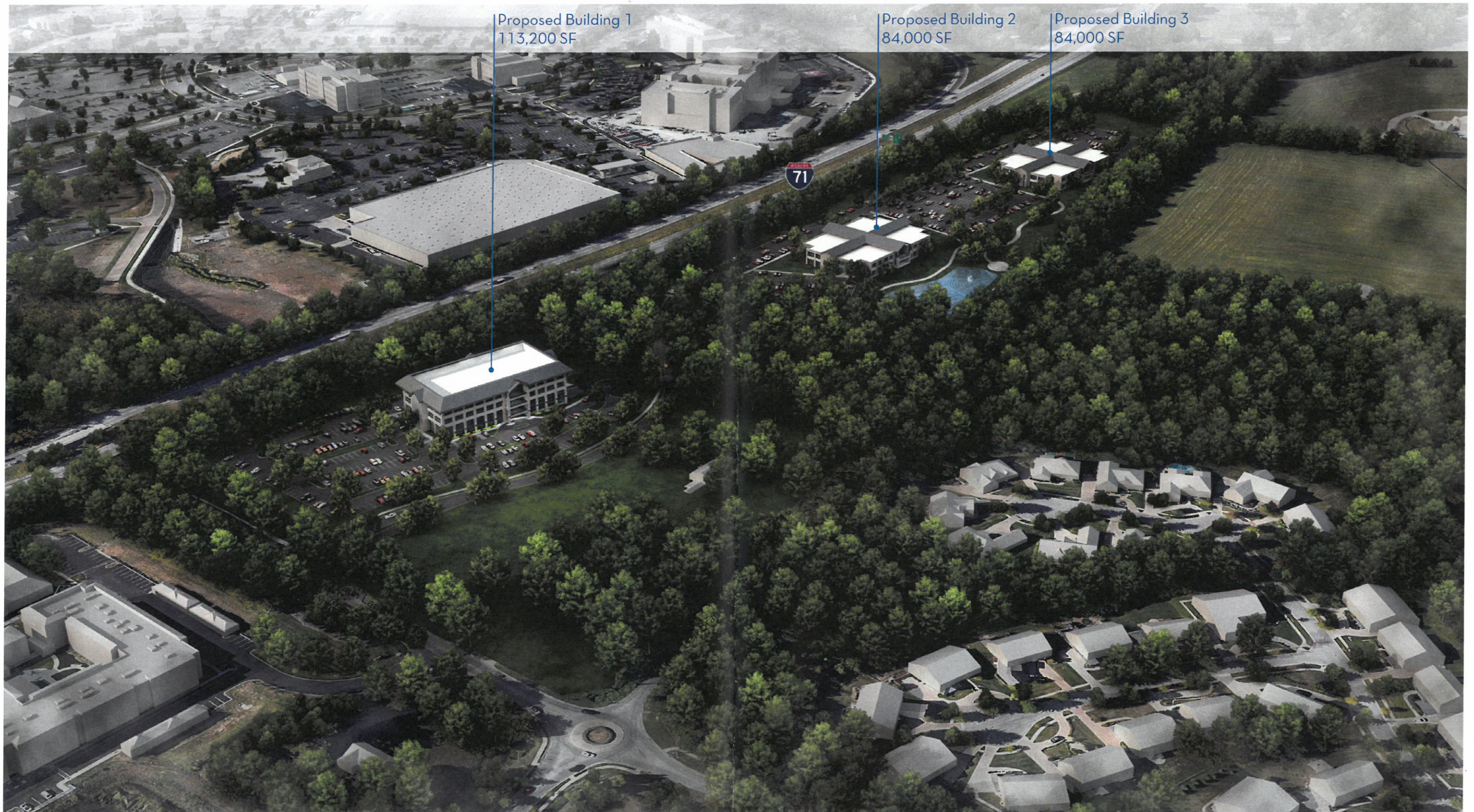


Aerial View from Northwest - Proposed

RECEIVED

JAN 04 2021

PLANNING & DESIGN  
SERVICES



Aerial View from Northeast - Proposed

RECEIVED

JAN 04 2021

PLANNING & DESIGN  
SERVICES



**02** North/South Elevation  
SCALE: 1/8" = 1'-0"



**01** East/West Elevation  
SCALE: 1/8" = 1'-0"





---

# THE McMAHAN GROUP

## WOLF PEN BRANCH - OFFICE BUILDING

Louisville, KY

19 January 2020



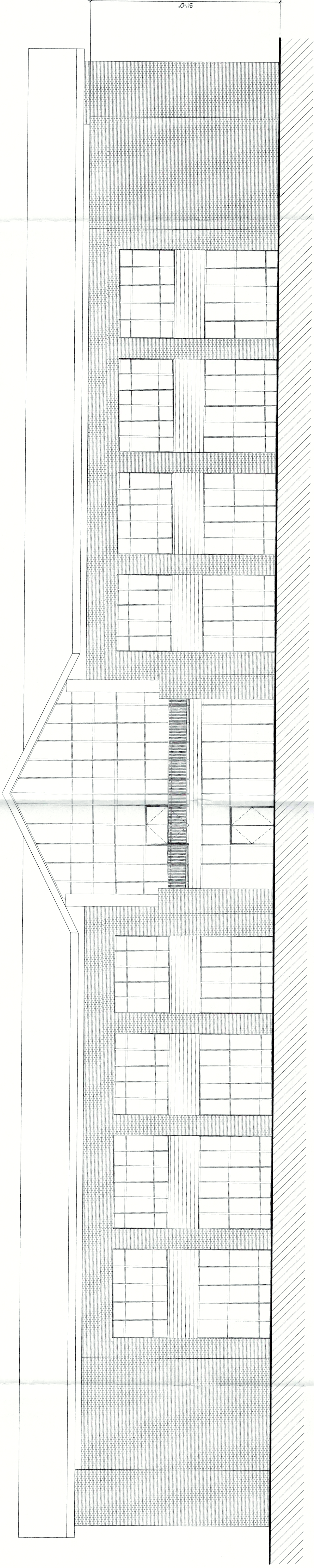
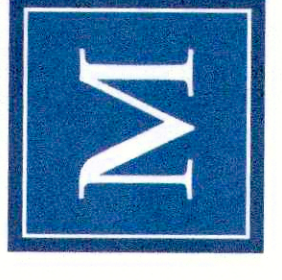
TEG ARCHITECTS  
DESIGN CHANGES LIVES

20-ZONE-0078

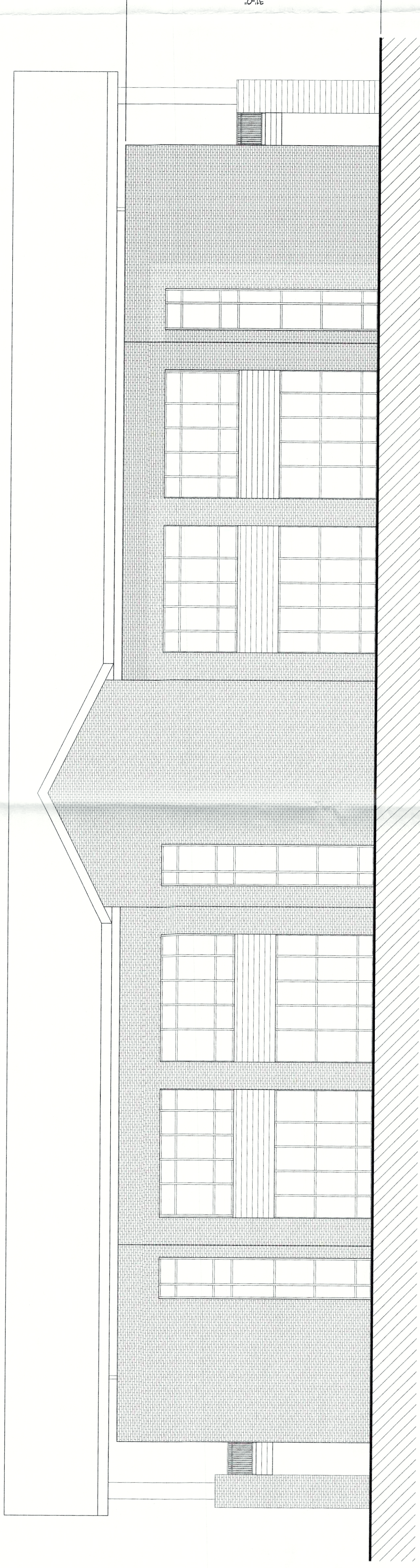


Ground View from Northwest





02 North/South Elevation  
SCALE: 1/8" = 1'-0"



01 East/West Elevation  
SCALE: 1/8" = 1'-0"

Building 2/3 Exterior Elevations

01/04/2021



RECEIVED  
JAN 04 2021  
PLANNING & DESIGN  
SERVICES

20-ZONE-0078