

20-DDP-0043

Assumption Greek Orthodox
930 Ormsby Ln



Development Review Committee

Jay Lockett, AICP, Planner I

June 2, 2021

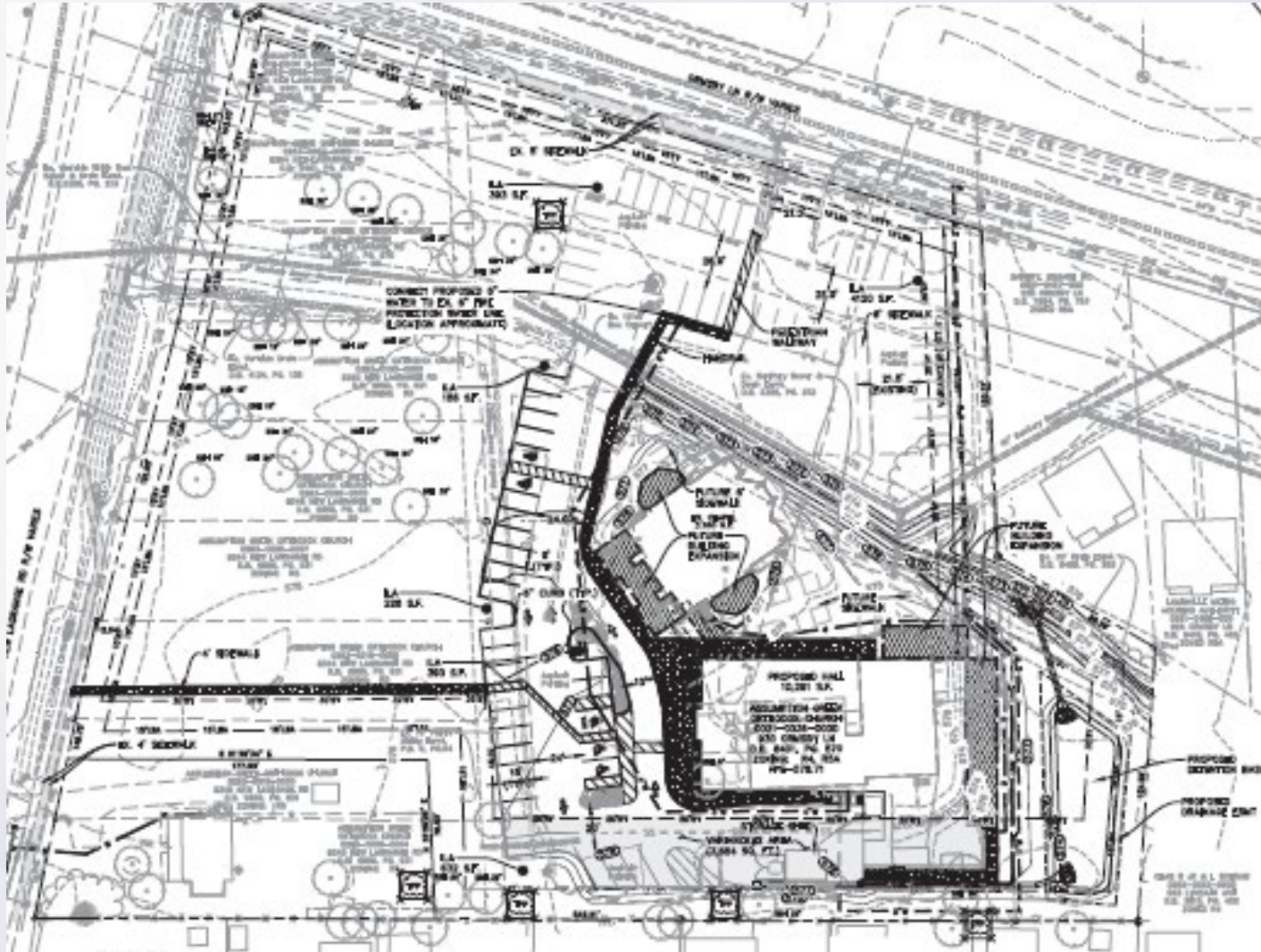
Requests

Revised Detailed District Development Plan with replacement of existing binding elements

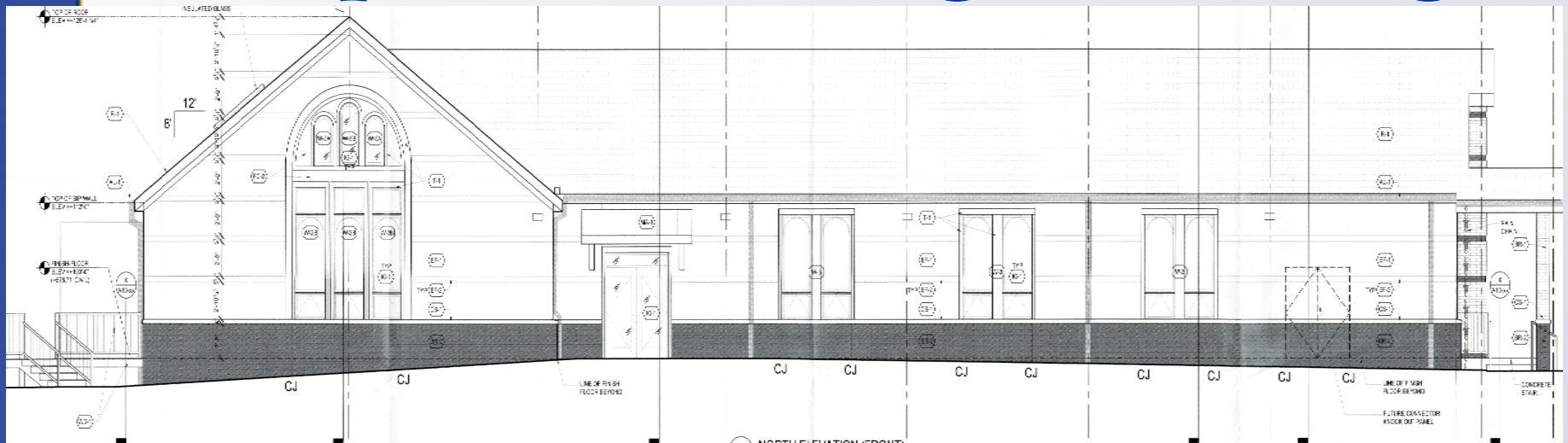
Project Summary

- The applicant is proposing to expand an existing religious institution, with additions to existing structures as well as new structures and parking areas.
- R-5a portion of the site rezoned under 9-39-85.

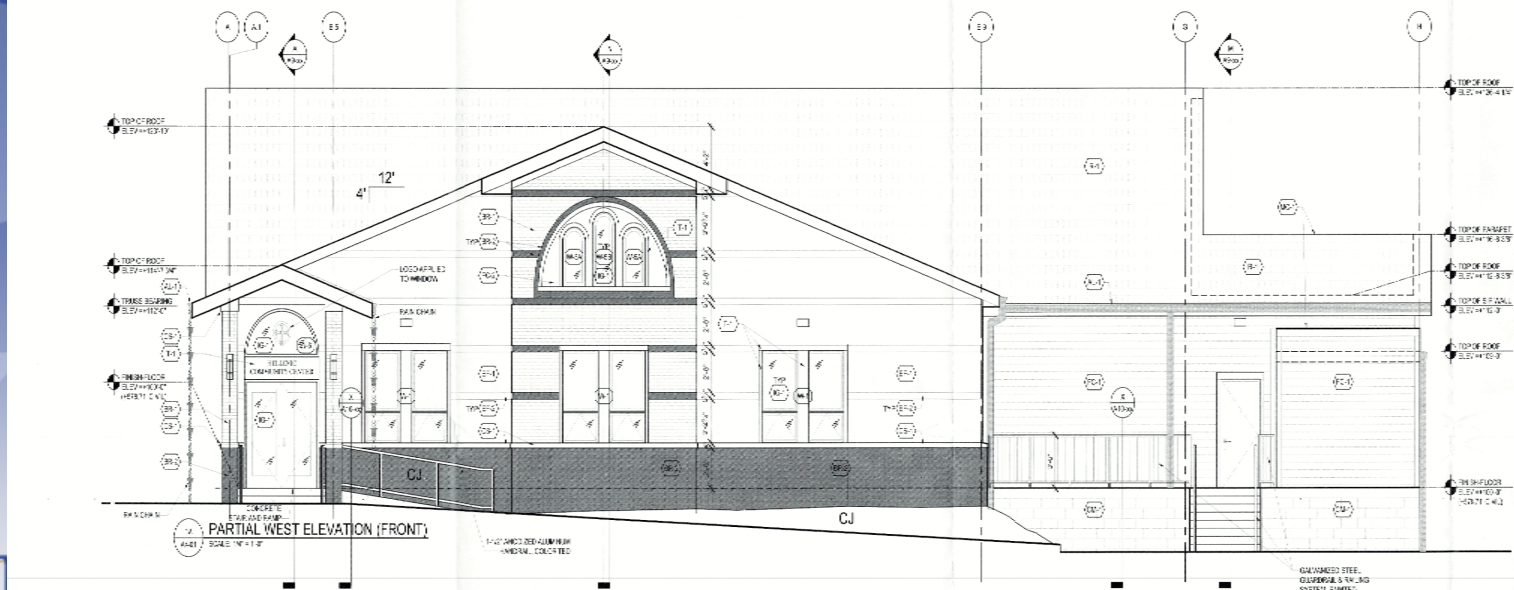
Proposed Plan



Proposed Building Rendering



2 NORTH ELEVATION (FRONT)
SCALE: 1/4" = 1'-0"



2 PARTIAL WEST ELEVATION (FRONT)
SCALE: 1/4" = 1'-0"

EXTERIOR FINISH LEGEND	
WATER MARK I.D.	DESCRIPTION
(A1)	PRE-FINISHED ALUMINUM GUTTER & DOWNSPOUTS MFSE: COOL COLOR: COOL
(E1)	FACE BR CK - MODULAR MFSE: COOL COLOR: COOL
(E2)	FACE BR CK - MODULAR (COLUMN, COLUMNS & SINE) MFSE: COOL COLOR: COOL
(E3)	CONCRETE MASONRY UNIT - PAINTED MFSE: COOL COLOR: COOL
(E4)	1" CAST STUD BOARD MFSE: COOL COLOR: COOL
(E5)	3/8" x 1/2" EXTERIOR MULLION ON FINISH SYSTEM - STEEL MFSE: FINE COLOR: STEELCOMP'S AWASHED - TED
(E6)	3/8" x 1/2" EXTERIOR MULLION ON FINISH SYSTEM - FIBERGLASS MFSE: FINE COLOR: STEELCOMP'S AWASHED - TED
(E7)	PREP-CEMENT LAF CEILING MFSE: HARBOR FINISH: COOL COLOR: STEELCOMP'S AWASHED - TED
(E8)	PREP-CEMENT LAF PANEL BOARD S/DING MFSE: HARBOR FINISH: COOL COLOR: STEELCOMP'S AWASHED - TED
(E9)	1" SQUARE BOLLARD GLASS JANTS BASES OF CORNER MFSE: FINE COLOR: STEELCOMP'S AWASHED - TED
(E10)	1" SQUARE BOLLARD GLASS JANTS BASES OF CORNER MFSE: FINE COLOR: STEELCOMP'S AWASHED - TED

PROJECT ASSEMBLY:
 1) 30 mm SQUARE FLUX GREN ON INSULATION
 2) 30 mm ASPHALT

Site Aerial



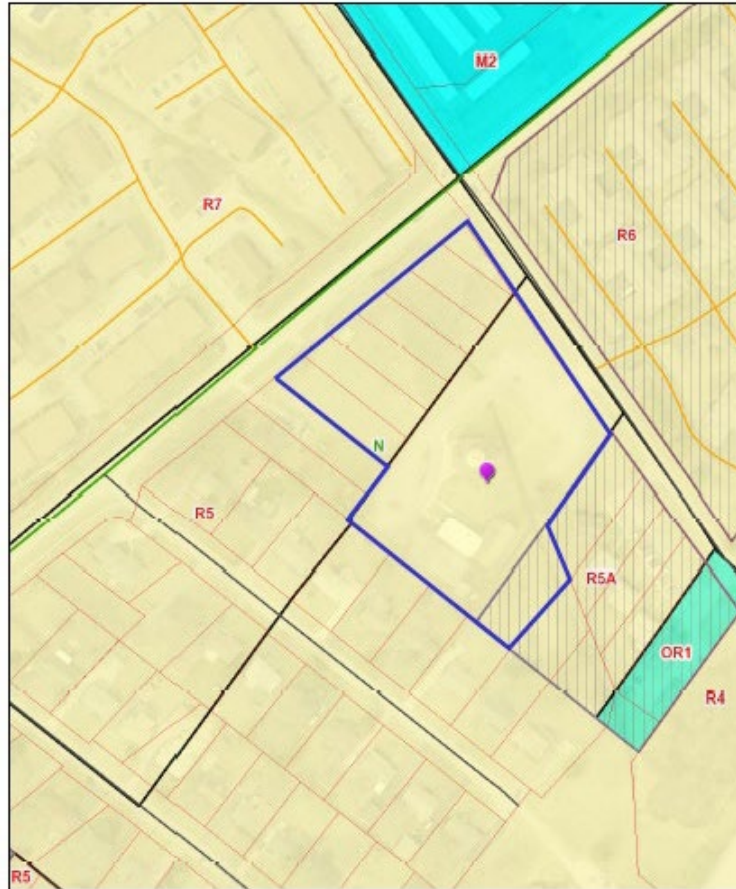
20-DDP-0043

Monday, May 24, 2021 | 1:38:49 PM



LOJIC © 2021
This map is not a legal document and should only be used for general reference and identification.

Site Zoning



20-DDP-0043

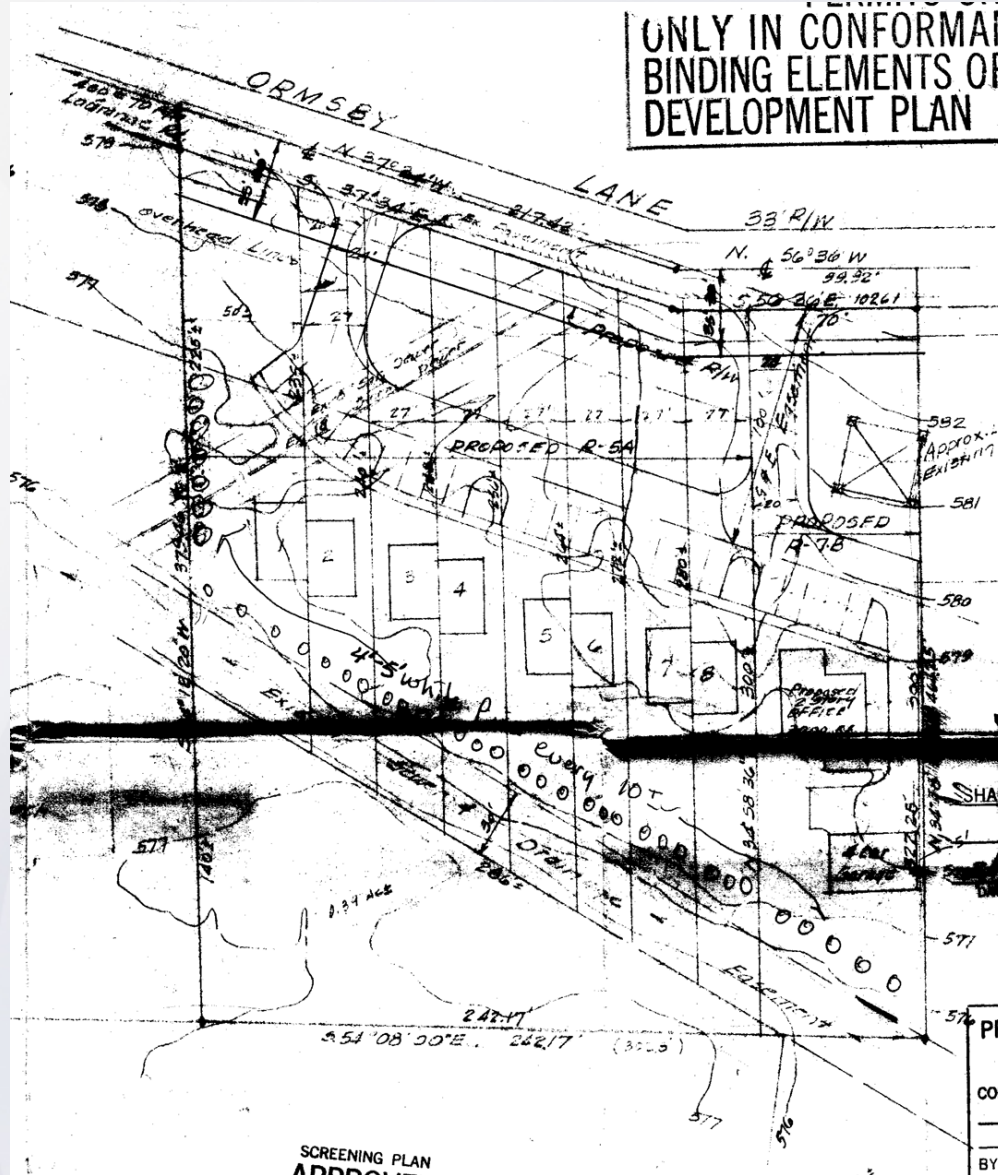
Monday, May 24, 2021 | 1:38:06 PM



LOJIC © 2021

This map is not a legal document and should only be used for general reference and identification.

1985 Rezoning Plan



Staff Findings

- The request is adequately justified and meets the standard of review. The development is compatible with the surrounding area and will provide all required buffering and screening.
- The Board of Zoning Adjustment will consider a variance to exceed maximum front setback and encroach into rear setbacks at the 6-7-21 meeting.

Required Actions

- **RECOMMEND** that The City of Lyndon **APPROVE** or **DENY** the Revised Detailed District Development Plan with replacement of existing binding elements.