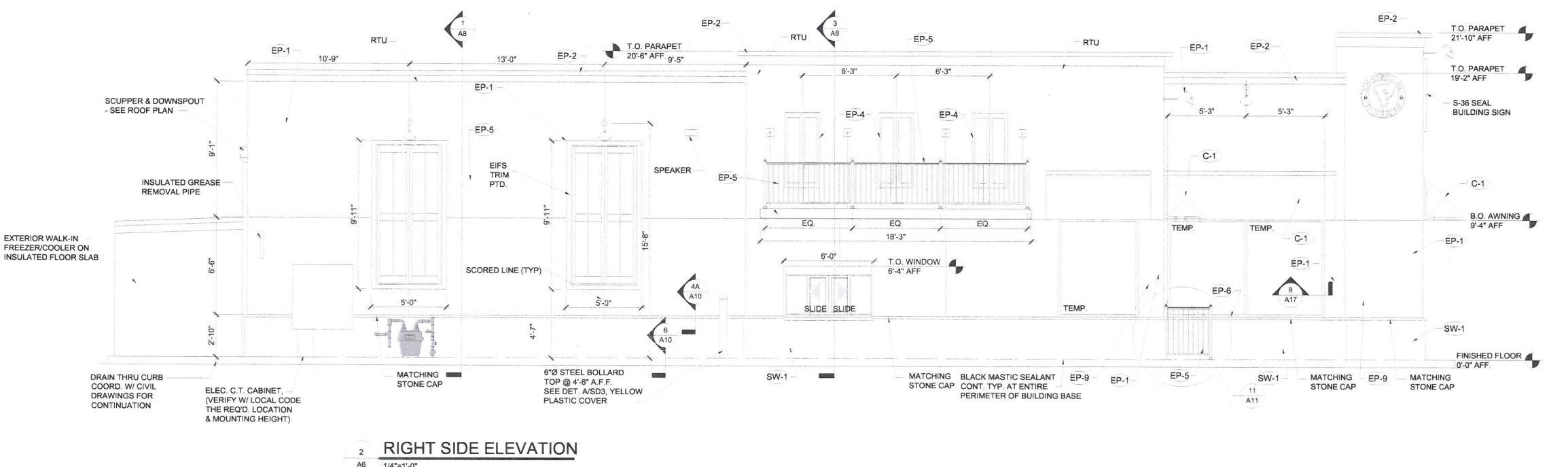


1 LEFT SIDE ELEVATION
A8 1/4"=1'-0"



2 RIGHT SIDE ELEVATION
A8 1/4"=1'-0"

SPECIFICATIONS

SECTION 8A: ALUMINUM ENTRANCE, STOREFRONT
 GENERAL PROVISIONS
 SCOPE: FURNISH AND INSTALL THE ALUMINUM ENTRANCE AND STOREFRONT SYSTEMS PER NATIONAL ACCOUNTS AND APPLICABLE DRAWINGS.
 MATERIALS
 1. ALUMINUM STOREFRONT AND ENTRANCE FRAMES: REFER TO CONSTRUCTION DRAWINGS AND SPECIFICATIONS.
 2. ALUMINUM ENTRANCE DOORS: REFER TO CONSTRUCTION DRAWINGS AND SPECIFICATIONS.
 3. PANIC HARDWARE: WHEN PANIC HARDWARE IS REQUIRED ON EXTERIOR DOORS, THE PANIC DEVICE IS ON EXTERIOR ENTRY DOORS WHEN SPECIFIED IN HARDWARE SCHEDULE.
 4. DRIVE-THRU SERVICE WINDOW: THE DRIVE-THRU SERVICE WINDOW WILL BE SUPPLIED & INSTALLED BY G.C. VERIFY EXACT TYPE OF WINDOW WITH PLANS. DARK BRONZE FINISH.
 WINDOW TO BE:
 A. BASE BID - "QUICK SERV" M.C.E. WINDOW FLUSH MOUNT.
 5. MISCELLANEOUS FLASHING/TRIM: ALUMINUM HEAD, SILL, COLUMN AND WALL TRIM. SEE EXTERIOR ELEVATIONS FOR FINISH.
 PERFORMANCE
 1. INSTALLATION: INSTALL IN ACCORDANCE WITH MANUFACTURER'S INSTRUCTION. PLACE IN CORRECT LOCATION AS SHOWN IN THE DETAILS. LEVEL, SQUARE, AND PLUMB AT PROPER ELEVATIONS AND IN ALIGNMENT WITH OTHER WORK. MAINTAIN SPACE IN HEAD POCKET FOR 1/4" HEAD DEFLECTION. INSURE FRAMING PROFILES MEET INSTALLATION REQUIREMENTS OF GLAZING UNITS TO MAINTAIN WARRANTY. SEE SECTION 8-D: GLAZING.

SECTION 8D: GLAZING
 GENERAL PROVISIONS
 1. SCOPE: FURNISH AND INSTALL GLASS IN STOREFRONT AND DRIVE-THRU SERVICE WINDOW.
 MATERIALS
 1. STOREFRONT GLAZING - REFER TO CONSTRUCTION DRAWINGS AND NOTES.
 PERFORMANCE
 2. ALLOW FOR 1/4" MINIMUM HEAD DEFLECTION DUE TO LIVE LOAD.
 3. GUARANTEES AND WARRANTIES: AT THE COMPLETION OF THE GLAZING, PROVE THE INSTALLATION WATERTIGHT BY SPRAYING ALL JOINTS WITH A GARDEN HOSE WITH NOZZLE SET FOR MAXIMUM PRESSURE. PROVIDE ADDITIONAL CAULKING OR SEALANT, OR RESET GLASS AS NECESSARY TO EFFECT A WATERTIGHT JOINT.

EXTERIOR FINISH NOTES

STO COLORS
 NA10-0016 - DELIGHTFUL GOLDEN
 NA01-0061 - EXOTIC RED
 NA10-0017 - MOCHA BROWN

DRYVIT COLORS
 POPE051020 - DELIGHTFUL GOLDEN
 POPE021028S - EXOTIC RED
 POPE031020S - MOCHA BROWN

E.I.F.S. WALL TEXTURE FINISH

Manuf.	Texture
STO	STO ESSENCE SWIRL
DRYVIT	QUARTZ PUTZ

FINISH NOTES
 THE FOLLOWING COMPONENTS CAN BE PURCHASED FROM THE APPROVED SIGN VENDORS:

- STANDING SEAM ROOF
- BALCONY RAILING
- CLEARANCE BAR
- MENU CANOPY
- GUARD RAIL
- AWNINGS
- SHUTTERS
- DUMPSTER GATES
- INTERIOR LADDER
- ENCLOSURE GATE

THE FOLLOWING COMPONENTS TO BE MANUFACTURED AND INSTALLED BY THE GENERAL CONTRACTOR

- EXTERIOR LADDER

POPEYES LOUISIANA KITCHEN NEW CONSTRUCTION AND REIMAGING				EXTERIOR FINISH SCHEDULE UPDATE: 4/5/2017		
Mark	Location	Supplier / Manuf.	Material	Specification	Color	Finish / Notes
EP-1	MAIN WALL SURFACE ABOVE WAINSCOT ACCENT TRIM	BENJAMIN MOORE	PANT OR EIFS FORMULA	#2158-30	DELIGHTFUL GOLDEN	Ultraspec Satin
EP-2	CROWN / WALL SURFACE ACCENT / WAINSCOT ACCENT TRIM		PANT OR EIFS FORMULA	#2086-10	EXOTIC RED	Ultraspec Satin
EP-3	WAINSCOT BELOW ACCENT TRIM @ REAR BLDG		EIFS / METAL / PAINT	#2107-20	MOCHA BROWN	Ultraspec Satin
EP-4	SHUTTERS	SHUTTERCONTRACTOR.COM	14 1/2"x60" VINYL SHUTTERS (Balcony)	L2 - VINYL	UNFINISHED	C30 - PAINTABLE
			25 1/2"x119" VINYL SHUTTERS (Building)	L7S - VINYL	UNFINISHED	C30 - PAINTABLE
EP-5	DRIVE THRU WINDOW CANOPY AND RAILINGS	RAILING VENDOR / TIGER DRYLAC	METAL / POWDER COAT	RAL 9009	RAINFORST FOLIAGE	170 Semi Gloss
EP-5 (ALT)		RAILING VENDOR / BENJAMIN MOORE	METAL / PAINT	#2040-10	RAINFORST FOLIAGE	P-29 DTM Semi Gloss
EP-6	STORE FRONT GLAZING	YKK AP	ANODIZED ALUMINUM	#YB5N	DARK BRONZE	21-28 DAYS
EP-6 (ALT)	STORE FRONT GLAZING		METAL / PAINT	READY MIX	BRONZETONE	P-29 DTM Semi Gloss
EP-7	DUMPSTER WALLS / GATES	BENJAMIN MOORE	METAL / PAINT	#2107-20	MOCHA BROWN	Ultraspec Satin
EP-8	BOLLARDS		PLASTIC		SAFETY YELLOW	
EP-9	ANTI-GRAFFITI	BENJAMIN MOORE	PAINT	ALIPHATIC ACRYLIC URETHANE	CLEAR GLOSS	M74-00 / M75 (2 COATS)
SW-1	STONE WAINSCOT	BORAL STONE	VERSETTA: SIMULATED STONE VENEER	LEDGESTONE	PLUMB CREEK	NON-OVERLAPPING
SG-1		QUIKRETE	VENEER STONE MORTAR	POLYMER MODIFIED RAL 6009	MOCHA BROWN	1137-85
G-1	AWNING GRATE (OPT)	AWNING SUPPLIER	METAL / POWDER COAT	RAL 6009	HUNTER GREEN	SMOOTH
C-1	STANDING SEAM CANOPY	COPPER SALES, INC.	UNA-CLAD	UC-4 ALUMINUM PANTONE PMS 187C	REGAL RED	12" OC / GAUGE PER LOCAL CODE REQUIREMENTS

POPEYES
 400 PERIMETER CENTER TERRACE
 SUITE 1000
 ATLANTA, GA 30348
 404-489-4460
 THESE DRAWINGS ARE THE
 PROPERTY OF
 POPEYES LOUISIANA KITCHEN, INC.
 AND SHALL NOT BE USED OR
 REPRODUCED WITHOUT THE
 EXPRESS WRITTEN PERMISSION
 FROM THE OWNER.



JEFF SPIKES
 LICENSE NO. 7689

POPEYES LOUISVILLE, KY
 LK 1746-DL-PLUS
 E.I.F.S. / SIMULATED STONE
 LOUISIANA KITCHEN LK-PLUS DESIGN STANDARDS
 48 SEATS / DUAL-LINE PRODUCTION

LOCATED AT
 2618 W BROADWAY
 LOUISVILLE, KY 40211



POPEYES

REVISIONS:

RECEIVED

MAY 13 2019

DESIGN SERVICES
 A6

LEFT & RIGHT
 EXTERIOR ELEVATIONS
 DATE: 4.22.19

CHECKED:

19 Rev 1/19/19