

Louisville Metro Council City Agency Request
Neighborhood Development Fund (NDF)
■ Capital Infrastructure Fund (CIF)
Municipal Aid Program (MAP)
Paving Fund (PAV)


Primary Sponsor: Keisha Dorsey

Amount: 26,432.00 **Date:** Nov 14, 2019

Description of program/project including public purpose, additional funding sources, location of project/program and any external grantee(s):
Appropriating \$26,432.00 in Capital Infrastructure Funds to the Louisville Metro Police Department for the purchase of one Speed Alert 18 Radar Machine including 36-months of Messaging Software updates to be utilized in the LMPD 2nd Division which serves the District Three area.

City Agency: Louisville Metro Police Department
Contact Person: Major Ryan Bates
Agency Phone: (502) 574-2478

I have reviewed this request for an expenditure of city tax dollars, and have determined the funds will be used for a public purpose and have the attached documentation from the receiving department concerning the project/expenditure.

3  \$26,432.00 Nov 14, 2019
District # Council Member Signature Amount Date

Approved by: _____
Appropriations Committee Chairman Date

Clerk's Office & OMB Use Only:

Request Amount: _____ Amended Amount: _____
Reference #: _____ To OMB: _____
Budget Revision #: _____
Account #: _____
To Project Manager: _____ Completion Date: _____
Actual Cost: _____ Funds Returned: _____

NDF, CIF, MAP OR PAV INTERAGENCY CHECKLIST

Interagency Name: Louisville Metro Police Department	
Program/Project Name: Speed Alert 18 Radar Machine	
	Yes/No/NA
Request Form: Is the Request Signed by all Council Member(s) Appropriating Funding?	Yes
Request Form: If matching funds are to be used, are they disclosed with account numbers in the request form description?	NA
Request Form: If matching funds are to be used, does the amount of the request exclude the matching fund amount?	NA
Request Form: If other funds are to be used for this project, are they disclosed with account numbers in the request form description?	NA
Funding Source: If CIF is being requested, does Metro Louisville own/will own the real estate, building or equipment? If not, the funding source is probably NDF.	Yes
Funding Source: If CIF is being requested, does the project have a useful life of more than one year? If not, the funding source is probably NDF.	Yes
Ordinance Required: Is the NDF request to a Metro Agency greater than \$5,000? If so, an ordinance is required.	NA
Ordinance Required: Is the request a transfer from NDF to cost center? If so, is the amount given for the fiscal year \$25,000 or less?	NA
Supporting Documentation: Does the attachment include a valid estimate and description of cost?	Yes

Submitted by: _____

Lisa A. Gray

Date: Nov 14, 2019

Franklin-Gray, Lisa A.

From: Bates, Ryan C
Sent: Monday, November 11, 2019 1:27 PM
To: Franklin-Gray, Lisa A.; Burbrink III, Donny F
Cc: Dorsey, Keisha C.; Miller, Russell J
Subject: RE: Acceptance email...

The 2nd Division is will accept the funds on the department's behalf.

Thank you,

Major Ryan C. Bates
2nd Division
3419 Bohne Avenue
Louisville, KY 40211
Office: 502.574.2478
Ryan.Bates@louisvilleky.gov



From: Franklin-Gray, Lisa A. <Lisa.FranklinGray@louisvilleky.gov>
Sent: Monday, November 11, 2019 11:38 AM
To: Burbrink III, Donny F <Donny.Burbrink@louisvilleky.gov>
Cc: Dorsey, Keisha C. <Keisha.Dorsey@louisvilleky.gov>; Bates, Ryan C <Ryan.Bates@louisvilleky.gov>
Subject: Acceptance email...

Good Morning, All:

I am drafting the CIF paperwork for the Speed Machine purchase on behalf of District Three Councilwoman Dorsey.

Could you please send me an email stating LMPD 2nd Div. will accept funds in the amount of \$26,432.00 for the purchase from All Traffic Solutions.

If you have any questions, please do not hesitate to contact our office.

Thank you in advance for your cooperation and assistance.

Best,

Lisa



Lisa Franklin Gray, MS MTh
Legislative Assistant to Councilwoman Keisha Dorsey
Metro Council District Three
601 W. Jefferson Street | Louisville, KY 40202
(502) 574-1103 | (502) 715-6515
lisa.franklingray@louisvilleky.gov

ALL TRAFFIC SOLUTIONS*A sign of the future.™*

All Traffic Solutions Inc.
 12950 Worldgate Dr
 #310
 Herndon, VA 20170
 Phone: 814-237-9005
 Fax: 814-237-9006
 DUNS #: 001225114
 Tax ID: 25-1887906
 CAGE Code: 34FQ5

QUOTE Q-45489

DATE/TIME: 9/24/2019
 12:45:15 PM

PAGE NO:
 1

Questions contact:
MANUFACTURER:
All Traffic Solutions
 Max Wicklein
 (571) 321-5452

Independent Sales Rep:

x
 mwicklein@alltrafficsolutions.co
 m

Mail Purchase**Orders to:**

3100 Research Dr.
 State College, PA
 16801

BILL TO:

Louisville Metro Police Department
 611 W Jefferson St
 Louisville, KY 40202

SHIP TO:

Louisville Metro Police Department
 Louisville Metro Fleet Services
 3515 Newburg Road
 Louisville, KY 40218

Billing Contact:

Attn: Donny Burbrink

PAYMENT TERMS:**CUSTOMER:** 245988**CONTACT:** 502-574-2258

Net 30

ITEM NO:	DESCRIPTION:	QTY:	EACH:	EXT. PRICE:
4000767	Base Model CREDIT, speed display; requires min 1 yr TrafficCloud Traffic Suite	1.00	(\$600.00)	(\$600.00)
4000874	All Options Activation: Bluetooth, Traffic Data, Violator Alert, Pictures, (\$3000 Value, requires Traffic or Message Suite)	1.00	\$0.00	\$0.00
4000793	Violator Strobe, Dual; Hardware for SpeedAlert 18, flash helps draw attention to the driver's speed. Requires color assignment PN.	1.00	\$400.00	\$400.00
4000826	Violator Strobe, Red and Blue for SpeedAlert 18, Requires 4000793 Dual Violator Strobe	1.00	\$0.00	\$0.00
4000173	Trailer, ATS-5 (select power separately)	1.00	\$3,200.00	\$3,200.00
4000765	Mount Kit, adaptable trailer mounting for Sh15 or SA18 on ATS-5, incl: power adapter harness and hardware	1.00	\$100.00	\$100.00
4000740	Trailer Certificate of Origin	1.00	\$0.00	\$0.00
4000754	USB cable, 16ft, extra long for trailer or pole	1.00	\$10.00	\$10.00
4900041	crate, ATS-5 trailer shipping crate	1.00	\$250.00	\$250.00

4000641	Shipping Common Carrier	1.00	\$700.00	\$700.00
4000636	Trailer Battery kit for ATS-5, 470Ah deep cycle batteries w/cover, hold down, cables& hdwr	1.00	\$990.00	\$990.00
4000781	ALPR Camera and Battery Enclosure for ATS-5, incl 470Ah Batteries, (requires 40A charger, not incl.)	1.00	\$2,350.00	\$2,350.00
4000836	ALPR Trailer Charger, 40A; for 940Ah battery capacity	1.00	\$600.00	\$600.00
4000661	Solar panel, 120W, includes bracket for pole and harness	1.00	\$1,200.00	\$1,200.00
4001178	Genetec Sharp V ALPR System for ATS-5 Trailer with power supply and modem	1.00	\$6,950.00	\$6,950.00
4001190	Discount - New Purchase	1.00	(\$9,668.00)	(\$9,668.00)
4000741	SpeedAlert 18 Radar Message Sign (RMS); base unit w/ mounting bracket	1.00	\$3,600.00	\$3,600.00
4000773	App, Traffic Suite (36mo); Equip Mgmt, Reporting, Image Mgmt, Alerts, Mapping and PremierCare	1.00	\$4,500.00	\$4,500.00
4001280	App, Hosted Genetec Security Center Software for Sharp V (36mos)	1.00	\$11,850.00	\$11,850.00

Special Notes:	SALES AMOUNT:	\$26,432.00
	SHIPPING:	
	TOTAL:	\$26,432.00

Duration: This quote is good for 60 days from date of issue.

Shipping Notes: All shipments shall be FOB shipper. Shipping charges shall be additional unless listed on quote.

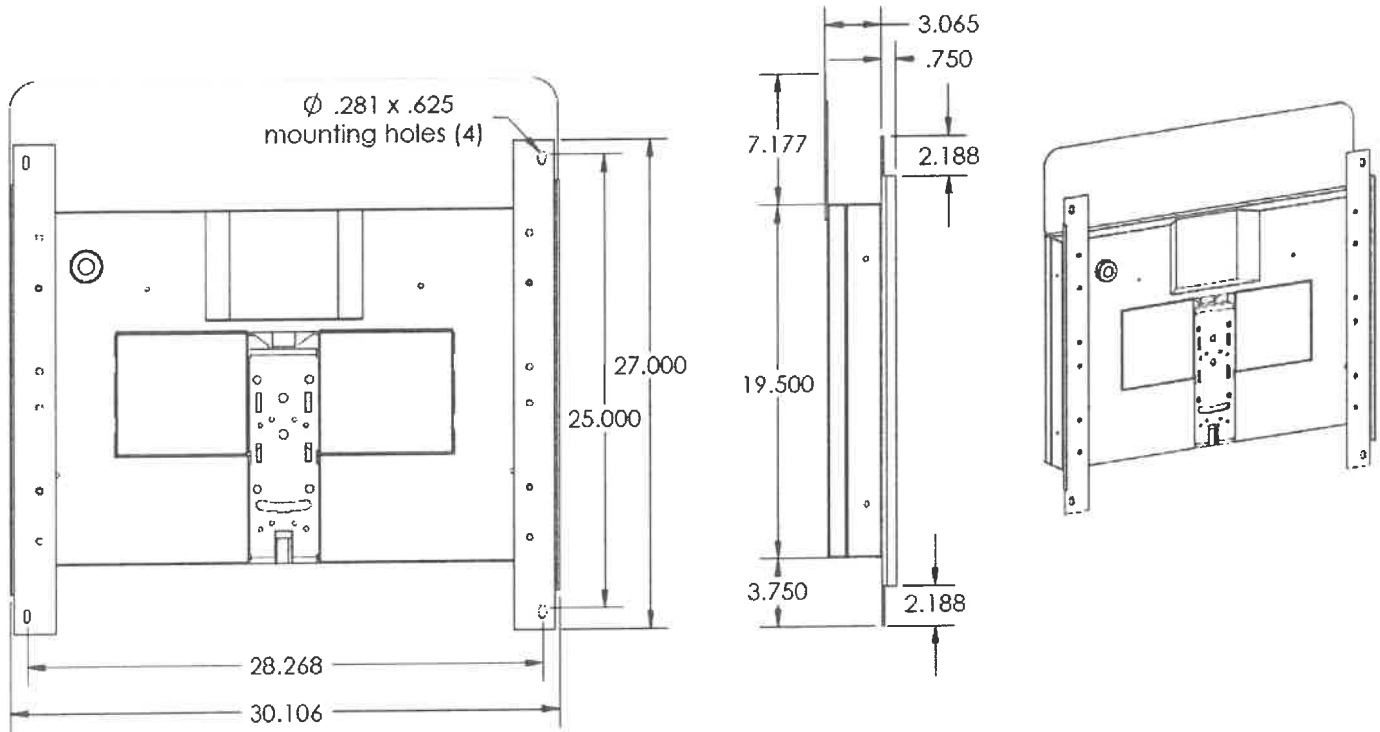
Taxes: Taxes are not included in quote. Please provide a tax-exempt certificate or sales tax will be applied.

Warranty: Unless otherwise indicated, all products have a three-year warranty from date of sale. Warranty extensions are a component of some applications that are available at time of purchase. A Finance Charge of 1.5% per month will be applied to overdue balances. GSA GS-07F-6092R

Authorization: By Signing below I indicate that I am authorized to commit my organization to the above.

Print Name, Title	Signature	Date

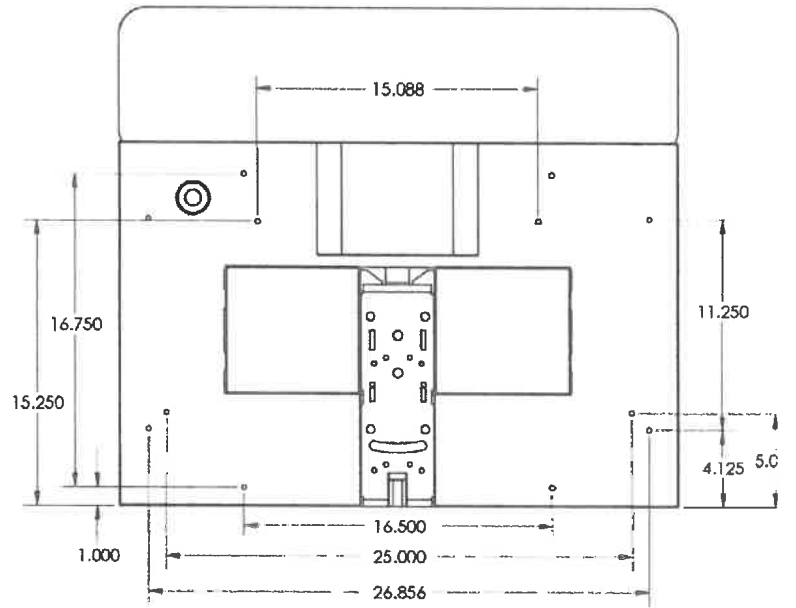
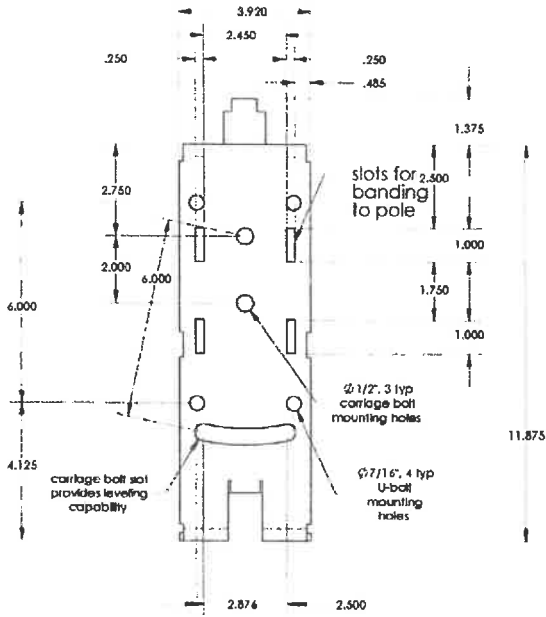
SpeedAlert 18 with Trailer Mounting Brackets Installed – for Installation on Existing Trailers for Trade In



All Traffic Solutions 12950 Worldgate Drive, Suite 310, Herndon, VA 20170
 Phone 866.366.6602 | sales@alltrafficsolutions.com | AllTrafficSolutions.com

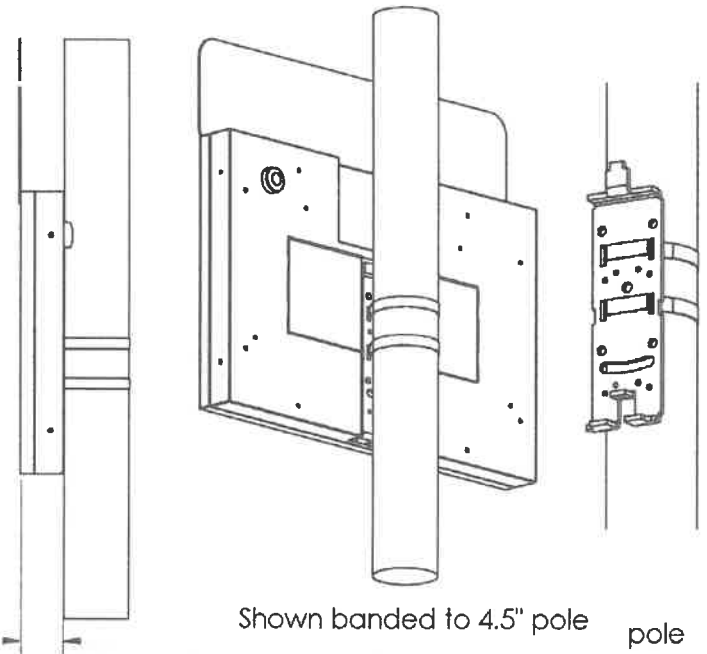
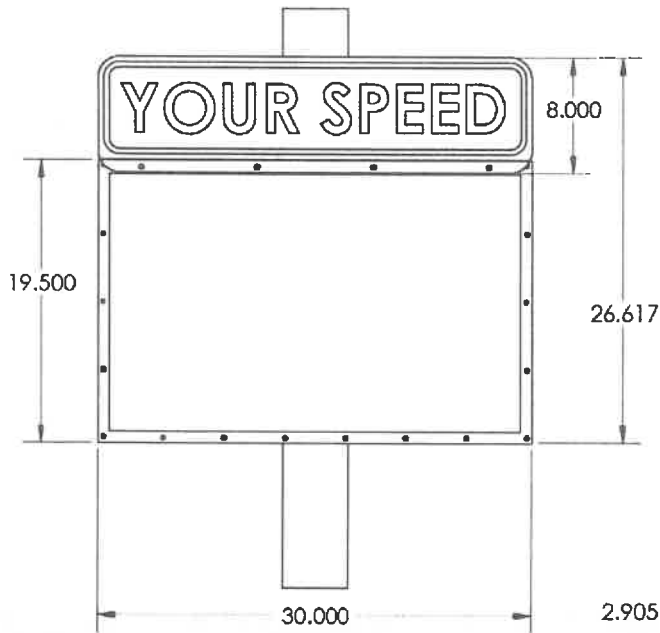
©All Traffic Solutions
 TrafficCloud leverages our patented technology (US Patents 8,417,442; 8,755,990; 9,070,287; 9,411,893) to deliver unique cloud-based management, features and functionality.

SpeedAlert 18 Mounting Bracket and Mounting Holes



Additional Mounting Provisions:
1/4-20 thread, captive nuts

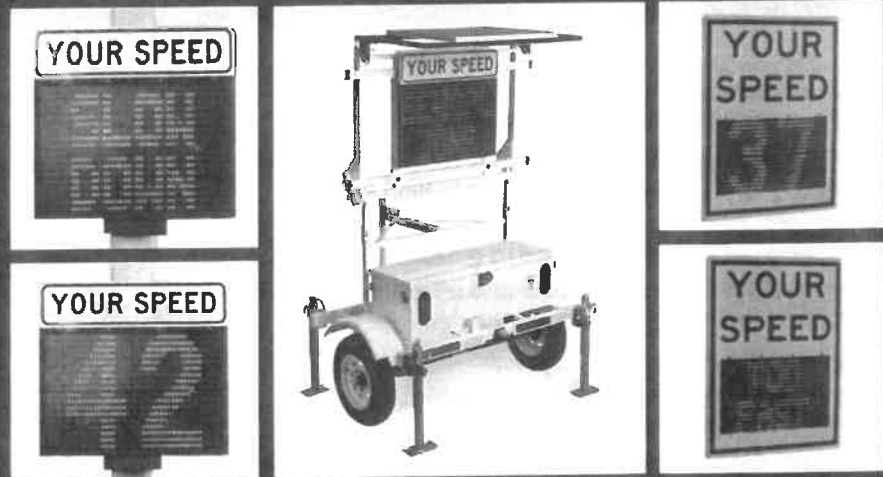
SpeedAlert 18 Dimensions



Compatible with these ATS Products

Engineered and manufactured in the United States of America

- 1+2. SpeedAlert 18 Pole Mount
3. SpeedAlert 18 on ATS-5 Trailer
4. SpeedAlert 18 with Full Wrap Your Speed Sign (White or Red)



- o ATS-5 Trailer (batteries with optional solar assist: 235 or 470 Ah battery system, 40 or 60W solar option)
 - o ATS-3 Trailer, 100Ah battery and 40W solar option
 - Battery level indicator on sign, ATS Android app, ATS PC Sign Manager or TraffiCloud Remote Management
 - Auto recovery for battery with solar
- Standard SpeedAlert System Components**
- SpeedAlert Radar Message Display SA18
 - Tamper resistant mounting plate and hardware
 - Key
 - On-board controls
 - ATS PC Sign Manger software with USB cable
- Optional SpeedAlert Components and Features**
- TraffiCloud Web-Based Remote Management Service
 - ATS Android app, Bluetooth connectivity
 - Padded carrying case
 - Extra mounting brackets
 - Speed activated relay closure
 - o 7A, 30VDC or 7A 120VAC max, 100mA 5VDC min, no power supplied, simply a contact closure
 - o Trigger relay at specified speed with configurable duration from 1 to 10 seconds per radar event
 - **Tamper Alarm:** ATS-5 or ATS-3 trailer
- SpeedAlert Mounting Options**
- Pole mount standard with included bracket, hardware
 - NCHRP 350 approved on 4" pole (Letter SS-135)
 - ATS-5 Trailer (refer to ATS-5 specifications for more information)
 - **ATS-3 Trailer** (refer to ATS-3 specifications for more info)
 - **Vehicle Hitch Mount**
 - o Mounts sign 30" to bottom of sign from receiver tube (final height dependent on receiver height)
 - o Fits 1 ¼" or 2" receiver, adapter included, ½" hitch pin
 - o Locking rotation adjustment on 15 degree increments over 180 degrees, +/- 5 degrees tilt
 - o White powder coat finish with rear reflector
 - **Standard Folding Portable Post**
 - o Folds for easy storage and portability
 - o **iA18:** 60" to 73" to bottom, 80" to 93" to top of sign depending on leg positions
 - Mounting provisions for permanent applications with ¼"-20 threaded holes
- Warranty**
- 1-year warranty (three months on Li-Ion batteries)
 - o Product software upgrades free
 - PremierCare, included with TraffiCloud Web Subscription
 - o Perpetual warranty for the duration of subscription
 - o Accessories, vandalism and accidental damage (non-warranty) at 50% off list price

- All messages and scheduling reside on the sign – no external hardware necessary
- Program schedule via TraffiCloud Web, ATS Android app or ATS PC Sign Manager, Save to load onto multiple signs
- Camera activation controlled in schedule windows
- Internal real time clock, time and schedule maintained with power disconnected

SpeedAlert Data Logging Option

- Traffic reports generated using TraffiCloud Web-based Reporting app
- Collect data automatically with TraffiCloud Remote Management or locally with ATS Android app or PC Sign Manager
- Reports include tables and charts to address all constituents with the most applicable data presentation
- All reports exportable to excel, csv and pdf
- Automatic Data Collection – TraffiCloud Web
 - o Data retrieval every 15 minutes – near real time reporting, memory never full
 - o All data in one database for analysis filtered by location, date and time
 - o Access reports from interactive map view by location
- **Local Data Collection:** ATS Android app or PC Sign Manager
 - o All data hosted in online database for anywhere access
 - o Download traffic data from sign with USB or Bluetooth connection
 - o 30 days of high volume data minimum storage on sign, Data collection rolls over when memory reaches capacity
- **Reports, Local Data Collection:**
 - o Summary page with average and 85th percentile speed, average daily volume, 10 mph pace speed, high and low speed, display mode
 - o Traffic counts by speed range, full day and time of day over selected date range with 5 mph resolution
 - o Vehicle counts by time range per day by hour
 - o Vehicle counts by speed range and time of day
- Reports, automatic data collection (TraffiCloud Web-based Management Services)
 - o Enhanced Summary with detail charts and graphs
 - o Compliance by speed range with 3 ranges

- o Enforcement report showing highest speed and volume violators over selected locations
- o Effectiveness report showing program performance

Construction

- 'YOUR SPEED' sign
 - o High intensity prismatic reflective background
 - o 24" x 8"
 - o 3.5" high MUTCD 'C' letters
- **LED Pixels:** Amber 595nm, 30 degree viewing angle, 100,000 hours, black background, (MUTCD compliant)
- **LED Density:** 0.6"x1" pitch, 18 x 48 pixel matrix
- **Radar:** K Band (24.15 GHz), FCC Certified, no license required, +-1 mph accuracy, 12 degree square pickup area, range: 1500+ ft., 5-105 mph (8-150 kph)
- Conformal coating on all circuit boards
- Integral handle
- Weatherproof, NEMA 4, IP65 sealed
- ¼" Tinted, non-glare, UV stabilized polycarbonate face
- Drip proof, vented battery compartments (2)
- Aluminium chassis, 14 ga, white powder coat finish, black powder coat front for maximum contrast for display visibility
- Tamper resistant mounting hardware system, hardware, controls and battery access secured behind enclosure lock
- -40 to 160 F operating temperature range, 95% humidity non-condensing (-20F for Bluetooth communication, 5F for internal camera)

SpeedAlert Power

- **Power Input, Max:** 12 VDC, 3 A max, 36 W max
- Power saving circuitry and automatic dimming for ambient light conditions with adjustable dimming range and manual display brightness override
- **SpeedAlert 18 Power Options:**
 - o 16Ah LFP battery with built-in short circuit and reverse polarity protection circuitry; 1.5A 12.8 VDC output, 120VAC input automatic charger; Capacity for up to 2 batteries in unit for extended portable use
 - o Solar panel assist: 40W or 60W solar panel and bracket, Solar controller panel with 26Ah lead acid battery; 6A 120VAC automatic charger optional
 - o 100-220VAC AC power supply (6A 12VDC) in external NEMA 4 enclosure

ATS Android App: Local Management (Optional):

- Android OS wireless Bluetooth control local to unit
- Android device can be phone or WiFi device with Bluetooth

Local Management Features: (PC and Android)

- Create and change messages, modes and settings
- Local data retrieval and management
- Local image retrieval and management from sign's internal camera
- Manage all unit settings, automatic sync with TrafficCloud Web-based Remote Management Service if subscribed
- All traffic data and messages saved for online management and backup
 - o Retrieve data and save to TrafficCloud at no cost, generate limited reports online from hosted data. Extended reports available with TrafficCloud subscription
 - o Create message and save to TrafficCloud library, messages available on all ATS Android App or PC Sign Manager devices with TrafficCloud subscription

SpeedAlert Messages

- **SA18:** 1-2 line messages
 - o **1 line:** 10 1/4" H x 5.75" W characters, four per line
 - o **2 lines:** 7" H x 4" W characters, six per line
- Up to 6 screens per message
- Full graphics capability, each LED individually controllable
- Variable display time, flash and reverse rates for each screen
- Scroll through 25 user defined onboard messages using selector buttons built into sign, no training necessary
- Ability to sequence messages for up to 144 screen animation
- Message power efficiency calculator in software
- Actual sign preview and unlimited message storage using TrafficCloud Web-based Remote Management Service, ATS PC Sign Manager or ATS Android app
- Messages on sign retained when power removed
- Sign returns to last message when power applied
- Conditional Messaging – Accept local or remote data and dynamically display messages driven off data, and/or incorporate into messages

SpeedAlert Programming

Configure the following parameters via TrafficCloud Web-based Management System, ATS Android app or PC Sign Manager

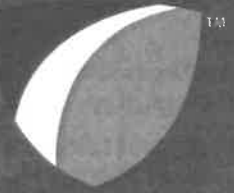
- **Messages**
 - o Create and load message using 'Display Now' feature
 - o Load 24 messages into sign's memory
 - o Scroll messages in sign's memory
 - o Display signs stored in TrafficCloud Web, ATS Android app or PC Sign Manager
- **Speeds**
 - o Speed limit
 - o Maximum speed displayed
 - o Display on/off/specific mph activation
 - o Radar sensitivity (range)
 - o **Speed limit sign operation:** Change speed limit up to 13 times per day schedule
 - o Metric capable display with hundreds digit
 - o Set time via PC, Android or sync with cell signal (TrafficCloud)
 - o Sign firmware field and remotely upgradeable

Speed Dependent Message System

- Different messages for each of five speed ranges
 - o No cars
 - o Cars <= speed limit
 - o Cars > Speed Limit, < x
 - o Cars > x < upper speed
 - o Cars > upper speed
- Ranges dependent on speed limit setting only, so simple speed limit change adjusts all dependent message ranges
- Independent maximum speed displayed setting
- Speed dependent messages can be any SA18 messages, including:
 - o 'YOUR SPEED' screen, 18" speed display digits
 - o 'SPEED LIMIT' screen, 18" speed limit display digits

Scheduling

- **All Days, Multiple Messages:** Schedule up to 50 different messages or modes for up to 13 different time periods in a 24 hour day, repeats in each 24 hour cycle
- **Seven Day, Multiple Messages:** Schedule different messages or modes for up to 13 different time periods in each 24 hour day for each of seven days, repeats in each seven day cycle; up to 50 different messages can be used over the seven day period



PRODUCT SPECIFICATIONS:

SPEEDALERT 18 RADAR MESSAGING SIGN

SpeedAlert Radar Message Sign

- **SpeedAlert 18 (SA18):** 18" x 28" full matrix
(SpeedAlert 24 (SA24) 24" x 60" full matrix also available – see separate SpeedAlert 24 Spec Sheet)
- Size and weight without battery
 - o 30"x20" x 2.74" (without Your Speed sign), 29 lbs
- Full matrix display
- **Universal mounting system:** Attach to pole, trailer or vehicle hitch mount
- Integral camera for awareness and alert triggered images: 640 x 480 pixel daylight images
- Internal K band radar with adjustable sensitivity
- Meets MUTCD Specifications

SpeedAlert Operation Modes

- **Message Mode:** Display one message, up to 6 screens
- **All Messages:** Sequence all messages in sign memory
- **Speed Display:** Display approaching vehicle's speed
- **Dependent Message:** Display targeted messages based upon vehicle's speed, up to six screens per message
- Changeable speed limit sign
- **Stealth or Display Off:** Collect traffic speed and volume data with no LED display, 'YOUR SPEED' sign easily removed
- **Schedule:** Change message and/or mode up to 13 times/day
- Collect vehicle volume by speed and time data in all modes
- Sign returns to last mode and configuration when power applied

SpeedAlert Programming Methods

On-Board Programming (standard on all units)

- Select operation mode
- Set Speed Limit
- Select message from sign's memory

TraffiCloud™ Web-based Remote Management Services:

Remote Management using integral cell modem *(See TraffiCloud specification for more information):*

- Turnkey system. Remote connectivity functional upon ship. Unit connects to TraffiCloud Service when sign powered
- Fully hosted web-based management system
 - o Internet connected computer with browser provides anywhere access on all connected devices with browser
 - o No IT involvement or support necessary. System bypasses customer network eliminating access issues
 - o Cellular provided by ATS, no separate cellular charges
 - o Hosted database requires no setup or maintenance by customer

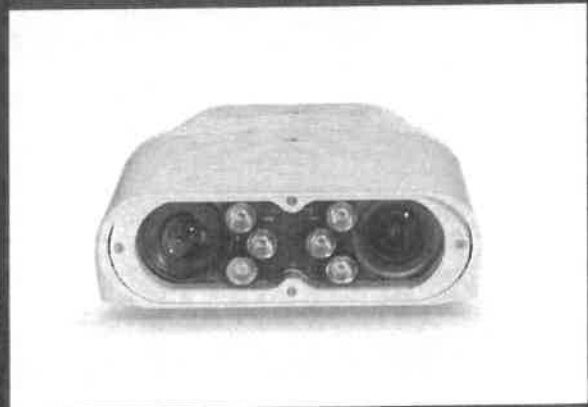
Apps – All apps included in Traffic Suite:

- **Equipment Management:** Online sign management - Change messages and settings remotely
- **Reporting:** Online data retrieval, management and analysis, Enhanced report generation
- **Image Management:** Online image retrieval and management of images from sign's internal camera
- **Alerts:** Notifications for low battery and tampering, high speed and congestion; Alerts can include images
- **Mapping:** Visually manage equipment and data
 - o PremierCare perpetual warranty

ATS PC Sign Manager

Local Management using PC with USB connection standard with all signs, Bluetooth optional

- PC based client software
- Connect to sign via USB or Bluetooth (optional)

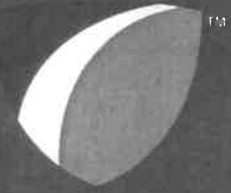


- **ALPR Camera Sensor**
 - o 1280 × 960 progressive scan @ 30 fps (ALPR), monochrome
- **Capture range**
 - o Long Range: 60 - 115 feet (18.25 – 35 meters)
- **Dimensions**
 - o 2.5 × 7.6 × 8.5 inches (63 × 192 × 214 mm)
- **Weight**
 - o 5.04 lbs. (2.29 kg)
- **Illuminator**
 - o Pulsed LED illuminator for effective use in 0 lux (total darkness) environments
 - o Different illumination wavelengths available

- **Context camera sensor**
 - o 1280 × 960 progressive scan @ 30 fps (ALPR), 15 fps (Streaming), color
- **Available colors**
 - o Security White
- **Temperature** -40°F to 140°F (-40°C to 65°C) operating
- **Power supply PoE+ (Power-over-Ethernet - 802.3 at Type 2 (25.5W) ~20W**
- **Water resistance IEC 60529: IP67**
- **External interface 1 x 10/100/1000 Base-T Ethernet port**
- **External I/Os 2 Inputs/ 2 Outputs (opto-isolated)**

See **ATS 5 Trailer Specifications Sheet** for additional specifications.

All Traffic Solutions 12950 Worldgate Drive, Suite 310, Herndon, VA 20170
 Phone 866.366.6602 | sales@alltrafficsolutions.com | AllTrafficSolutions.com



PRODUCT SPECIFICATIONS:

AUTOMATIC LICENSE PLATE RECOGNITION CAMERA

Power Your ATS Trailer with ALPR Intelligence

Our all-in-one automatic license plate recognition (ALPR) camera is designed to simplify deployments from specification through installation. Versatile and accurate, this device is ideally suited for a range of applications including:

- Management of off-street parking lots and facilities for tighter access control
- Monitoring of entrances and exits
- Capturing license plates at high speeds on streets and highways
- Covering major city access points for wanted vehicles
- Locating vehicle owners that have outstanding arrest warrants or unpaid parking tickets
- Conduct crime and convoy analyses to accelerate investigations
- Identify cruising vehicles
- Assisting in missing person searches

Benefits

- Equipped with high-resolution ALPR and context cameras and on-board illumination, covers a wide field-of-view and provides high-quality images, day or night
- On-board image processing and analysis—only plate read data is transferred over the network for decreased data load on the network and server; the cameras are not dependent on the server, providing uninterrupted coverage even when connectivity goes down

- On-board I/Os can be used to trigger reads based on sensors to increase capture rates or open gates based on a list of permitted plates

Simplified Specification and Installation

All-in-one ALPR unit connects to power and data using a single off-the-shelf Ethernet cable for fast deployment. As a varifocal camera, the reading distance and magnification are adjustable on site, reducing system design and specification effort.

Features

- On-board ALPR processing ensures performance and scalability
- Varifocal cameras ease specification and design
- IP67-rated enclosure allows for operation in extreme weather conditions and harsh environments
- Built-in illumination for around-the clock operation
- Onboard I/Os for integration to sensors or triggers, e.g., induction loops or gates

The ALPR camera includes high-resolution ALPR and context cameras as well as integrated illumination and on-board processing.

- 1280 x 960 progressive scan at 30 fps, monochrome LPR camera
- Long Range: 60 - 115 feet (18 - 35 meters)
- Power over Ethernet plus (PoE+) connectivity



Generated by Max Wicklein from All Traffic Solutions General Sales Demo Account on Dec 20, 2017 at 9:6:12 AM

Violation Threshold: Speed Limit + 10
 Time of Day: 0:00 to 23:59
 Dates: 12/13/2017 to 12/19/2017

Rank Results By: 85% Speed
 Speed Bins: Size 5, Range 1 to 100
 Site: Beside Mt Nittany United Methodist Church, NB

#	Site	Day of Week	Time	Speed Limit	Average Speed	Average Violator Speed	85% Speed	Average # Vehicles	Average # Violators
1	Beside Mt Nittany United Methodist Church, NB	Monday	6:00 - 7:00	35	33.0	0.0	40.0	32.0	0.0
2	Beside Mt Nittany United Methodist Church, NB	Thursday	15:00 - 16:00	35	32.0	47.0	39.0	356.0	7.0
3	Beside Mt Nittany United Methodist Church, NB	Saturday	12:00 - 13:00	35	32.0	47.6	39.0	328.0	10.0
4	Beside Mt Nittany United Methodist Church, NB	Sunday	0:00 - 1:00	35	32.0	47.0	38.0	43.0	1.0
5	Beside Mt Nittany United Methodist Church, NB	Tuesday	14:00 - 15:00	35	30.0	49.0	38.0	346.0	4.0
6	Beside Mt Nittany United Methodist Church, NB	Tuesday	23:00 - 24:00	35	32.0	53.0	38.0	66.0	3.0
7	Beside Mt Nittany United Methodist Church, NB	Friday	0:00 - 1:00	35	32.0	51.0	38.0	39.0	1.0
8	Beside Mt Nittany United Methodist Church, NB	Saturday	8:00 - 9:00	35	32.0	47.0	38.0	54.0	1.0
9	Beside Mt Nittany United Methodist Church, NB	Sunday	1:00 - 2:00	35	32.5	0.0	37.5	23.0	0.0
10	Beside Mt Nittany United Methodist Church, NB	Tuesday	22:00 - 23:00	35	32.0	49.0	37.5	125.0	1.0
11	Beside Mt Nittany United Methodist Church, NB	Thursday	16:00 - 17:00	35	30.5	48.8	37.5	368.0	5.0
12	Beside Mt Nittany United Methodist Church, NB	Saturday	13:00 - 14:00	35	31.5	46.2	37.5	298.0	6.0
13	Beside Mt Nittany United Methodist Church, NB	Tuesday	15:00 - 16:00	35	31.0	49.3	37.0	357.0	6.0
14	Beside Mt Nittany United Methodist Church, NB	Wednesday	14:00 - 15:00	35	31.0	49.0	37.0	282.0	5.0
15	Beside Mt Nittany United Methodist Church, NB	Thursday	12:00 - 13:00	35	31.0	48.0	37.0	250.0	3.0
16	Beside Mt Nittany United Methodist Church, NB	Thursday	14:00 - 15:00	35	31.0	47.0	37.0	329.0	2.0
17	Beside Mt Nittany United Methodist Church, NB	Friday	7:00 - 8:00	35	31.5	49.8	37.0	79.0	4.0
18	Beside Mt Nittany United Methodist Church, NB	Saturday	1:00 - 2:00	35	31.5	0.0	37.0	31.0	0.0
19	Beside Mt Nittany United Methodist Church, NB	Saturday	14:00 - 15:00	35	31.0	46.0	37.0	266.0	1.0
20	Beside Mt Nittany United Methodist Church, NB	Monday	10:00 - 11:00	35	30.5	50.0	36.5	243.0	3.0
21	Beside Mt Nittany United Methodist Church, NB	Wednesday	16:00 - 17:00	35	31.0	47.0	36.5	366.0	7.0
22	Beside Mt Nittany United Methodist Church, NB	Thursday	13:00 - 14:00	35	31.0	47.5	36.5	296.0	2.0
23	Beside Mt Nittany United Methodist Church, NB	Sunday	14:00 - 15:00	35	31.0	49.0	36.0	264.0	2.0
24	Beside Mt Nittany United Methodist Church, NB	Sunday	15:00 - 16:00	35	31.0	49.8	36.0	249.0	4.0
25	Beside Mt Nittany United Methodist Church, NB	Sunday	20:00 - 21:00	35	31.0	49.5	36.0	136.0	2.0



Generated by Max Wicklein from All Traffic Solutions General Sales Demo Account on Dec 20, 2017 at 9:6:44 AM

Time of Day: 0:00 to 23:59
 Dates: 12/13/2017 to 12/19/2017
 Medium Risk Threshold: Speed Limit + 10
 High Risk Threshold: Speed Limit + 20

Time View: By Hour (Avg Volumes)
 Speed Bins: Size 5, Range 1 to 100
 Site: Beside Mt Nittany United Methodist Church, NB

Date/Time Range	Speed Limit	Mode	Compliant	Low Risk	Medium Risk	High Risk	Total Num Vehicles
0:00	35	Speed Display	13	3	0	0	16
1:00	35	Speed Display	9	2	0	0	10
2:00	35	Speed Display	5	1	0	0	6
3:00	35	Speed Display	6	2	0	0	8
4:00	35	Speed Display	9	3	1	0	13
5:00	35	Speed Display	22	5	1	0	27
6:00	35	Speed Display	58	7	1	0	66
7:00	35	Speed Display	121	15	1	0	137
8:00	35	Speed Display	180	20	1	0	201
9:00	35	Speed Display	184	33	2	0	219
10:00	35	Speed Display	216	37	2	0	255
11:00	35	Speed Display	242	46	2	0	291
12:00	35	Speed Display	259	45	2	0	307
13:00	35	Speed Display	249	52	2	0	303
14:00	35	Speed Display	258	56	3	0	317
15:00	35	Speed Display	278	48	3	0	328
16:00	35	Speed Display	292	35	1	0	328
17:00	35	Speed Display	283	28	0	0	312
18:00	35	Speed Display	194	29	1	0	224
19:00	35	Speed Display	145	24	1	0	170
20:00	35	Speed Display	126	18	1	0	146
21:00	35	Speed Display	90	12	0	0	102
22:00	35	Speed Display	65	9	1	0	75
23:00	35	Speed Display	31	6	0	0	37
Avg # Vehicles			139	22	1	0	162



Generated by Max Wicklein from All Traffic Solutions General Sales Demo Account on Dec 20, 2017 at 9:6:44 AM

Time of Day: 0:00 to 23:59

Dates: 12/13/2017 to 12/19/2017

Medium Risk Threshold: Speed Limit + 10

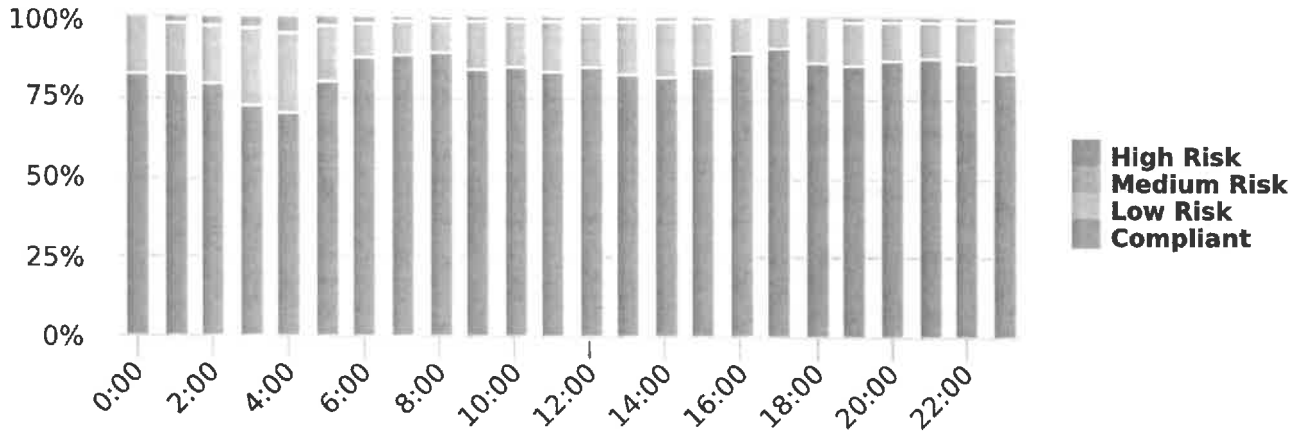
High Risk Threshold: Speed Limit + 20

Time View: By Hour (Avg Volumes)

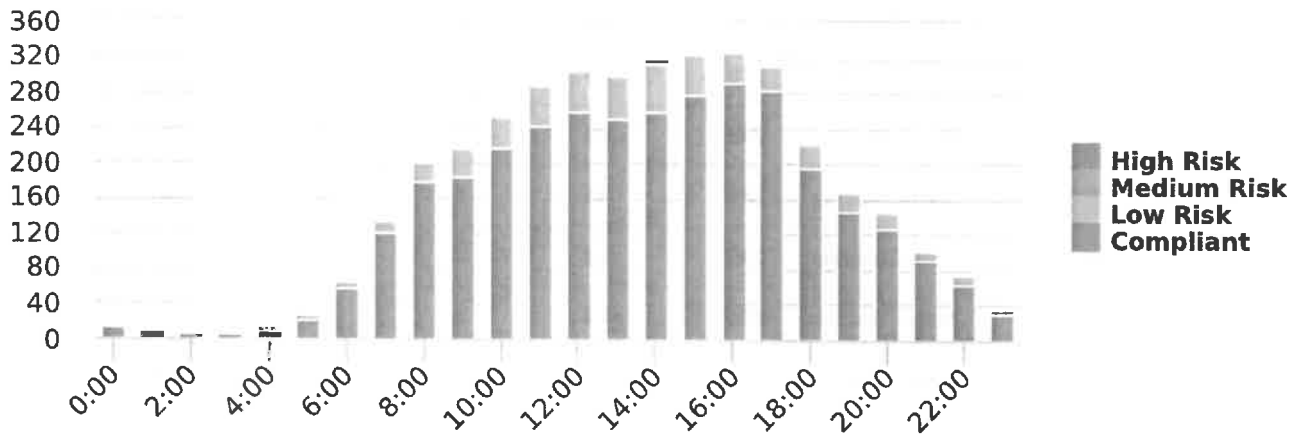
Speed Bins: Size 5, Range 1 to 100

Site: Beside Mt Nittany United Methodist Church, NB

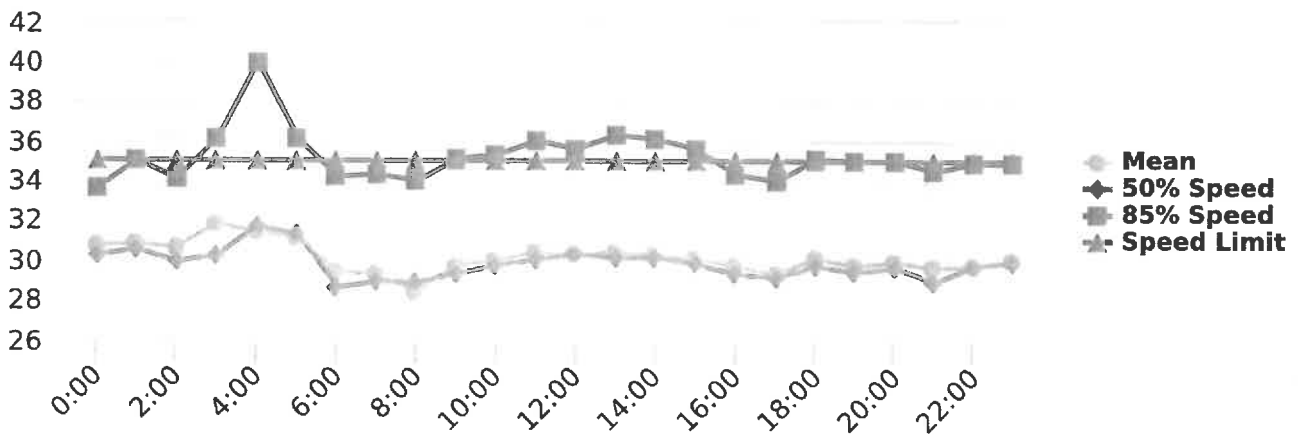
Compliance % by Hour



Compliance by Hour



Speeds





Generated by Max Wicklein from All Traffic Solutions General Sales Demo Account on Dec 20, 2017 at 9:9:53 AM

Medium Risk Threshold: Speed Limit + 10

High Risk Threshold: Speed Limit + 20

Time of Day: 0:00 to 23:59

Dates: 12/13/2017 to 12/19/2017

Time View: By Hour (Avg Volumes)

Speed Bins: Size 5, Range 1 to 100

Site: Beside Mt Nittany United Methodist Church, NB

Date/Time Range	Spd Lim	Sign Mode	Compliant Avg Final Speed	Compliant Change in Speed	Low Risk Avg Final Speed	Low Risk Change in Speed	Medium Risk Avg Final Speed	Medium Risk Change in Speed	High Risk Avg Final Speed	High Risk Change in Speed	% of Vehicles Slowed By
0:00	35	Speed Display	29.8	-2.7	39.3	-1.1	0.0	0.0	0.0	0.0	69.5 %
1:00	35	Speed Display	28.5	-2.9	39.6	-1.8	47.0	-1.0	0.0	0.0	79.0 %
2:00	35	Speed Display	28.7	-2.3	37.5	-2.5	54.0	-4.0	0.0	0.0	76.6 %
3:00	35	Speed Display	27.8	-2.2	39.6	-1.6	51.5	0.0	0.0	0.0	67.1 %
4:00	35	Speed Display	26.0	-0.7	40.2	-2.1	48.5	-1.5	0.0	0.0	66.9 %
5:00	35	Speed Display	28.5	-2.2	39.0	-1.2	49.5	-0.5	0.0	0.0	74.7 %
6:00	35	Speed Display	27.9	-2.0	39.0	-3.1	49.3	-3.0	0.0	0.0	73.3 %
7:00	35	Speed Display	27.8	-1.3	37.8	-1.2	46.8	-1.2	0.0	0.0	63.9 %
8:00	35	Speed Display	27.6	-1.7	38.2	-1.1	47.1	-0.4	0.0	0.0	64.6 %
9:00	35	Speed Display	28.2	-1.8	38.7	-1.4	48.5	-1.0	0.0	0.0	68.4 %
10:00	35	Speed Display	28.5	-1.9	38.5	-1.1	47.6	0.1	0.0	0.0	66.9 %
11:00	35	Speed Display	28.5	-2.0	38.9	-1.1	47.6	-1.4	0.0	0.0	69.4 %
12:00	35	Speed Display	28.7	-1.8	38.7	-1.4	46.6	-0.7	0.0	0.0	69.2 %
13:00	35	Speed Display	28.8	-2.0	38.7	-1.1	48.4	-0.3	0.0	0.0	71.3 %
14:00	35	Speed Display	28.3	-1.8	38.7	-0.7	48.6	-1.2	0.0	0.0	67.4 %
15:00	35	Speed Display	28.4	-1.8	38.6	-0.9	47.7	0.1	0.0	0.0	68.1 %
16:00	35	Speed Display	28.4	-1.9	38.1	-1.3	46.5	0.3	60.0	4.0	70.0 %
17:00	35	Speed Display	28.2	-1.8	38.3	-1.2	50.0	1.0	0.0	0.0	68.0 %
18:00	35	Speed Display	28.6	-2.3	38.6	-1.2	47.4	-0.4	0.0	0.0	72.5 %
19:00	35	Speed Display	28.3	-1.9	38.6	-1.5	49.1	-0.6	0.0	0.0	67.6 %
20:00	35	Speed Display	28.3	-1.9	38.7	-1.2	47.7	-0.3	0.0	0.0	68.9 %
21:00	35	Speed Display	28.0	-2.2	38.8	-1.4	48.0	-1.7	0.0	0.0	71.9 %
22:00	35	Speed Display	28.3	-2.4	38.7	-1.5	49.3	-0.2	57.0	-3.0	71.0 %
23:00	35	Speed Display	28.1	-2.1	39.7	-2.0	49.0	-1.3	0.0	0.0	69.7 %



Generated by Max Wicklein from All Traffic Solutions General Sales Demo Account on Dec 20, 2017 at 9:9:53 AM

Medium Risk Threshold: Speed Limit + 10

High Risk Threshold: Speed Limit + 20

Time of Day: 0:00 to 23:59

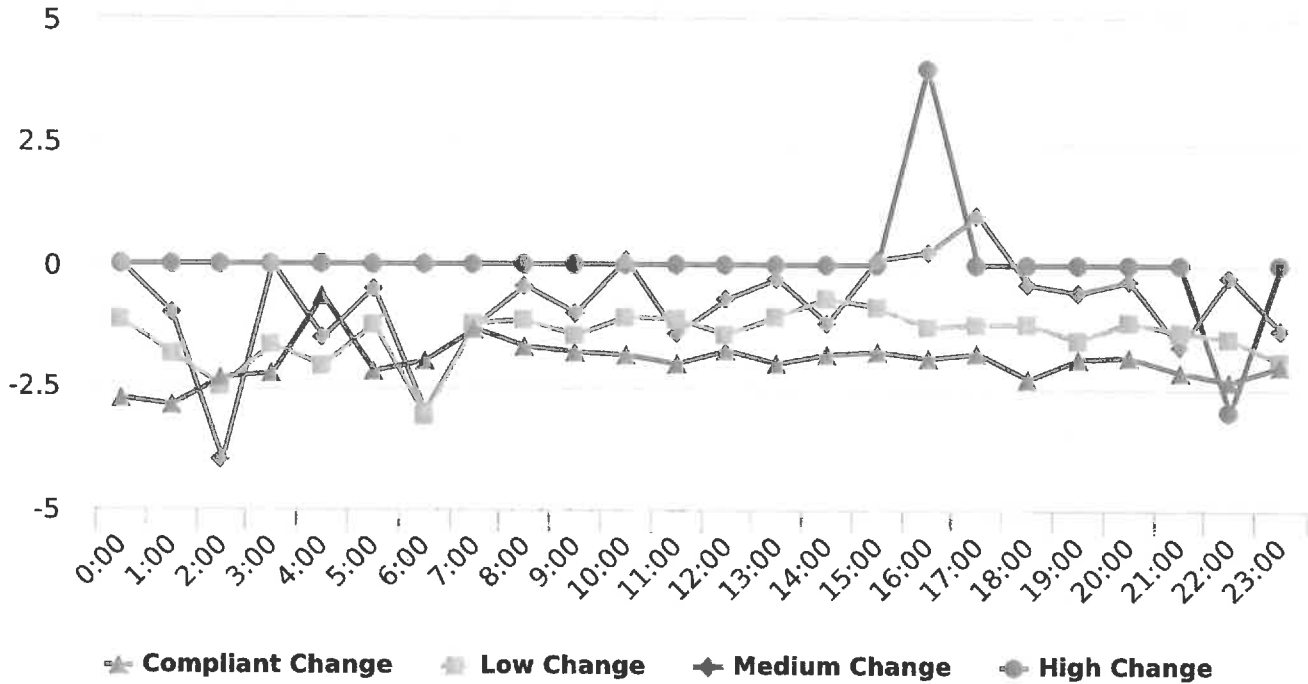
Dates: 12/13/2017 to 12/19/2017

Time View: By Hour (Avg Volumes)

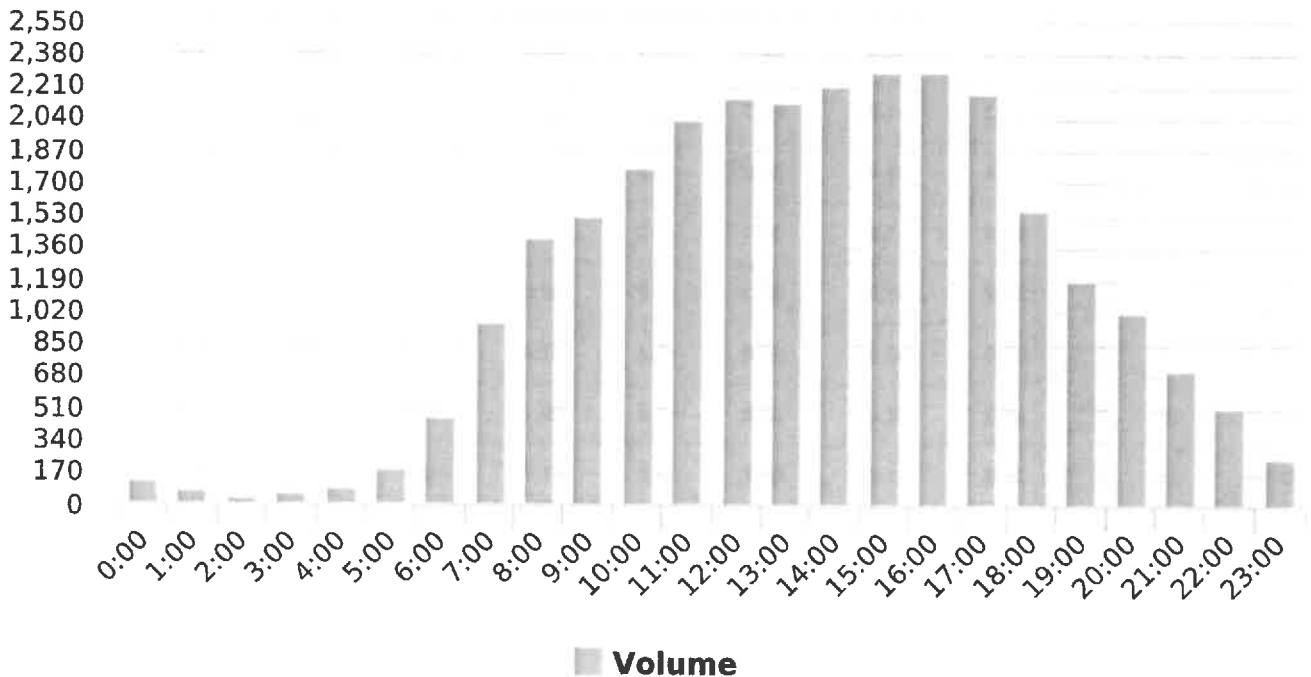
Speed Bins: Size 5, Range 1 to 100

Site: Beside Mt Nittany United Methodist Church, NB

Changes in Speed by Risk Threshold



Volume by Hour



Generated by Max Wicklein from All Traffic Solutions General Sales Demo Account on Dec 20, 2017 at 9:5:29 AM



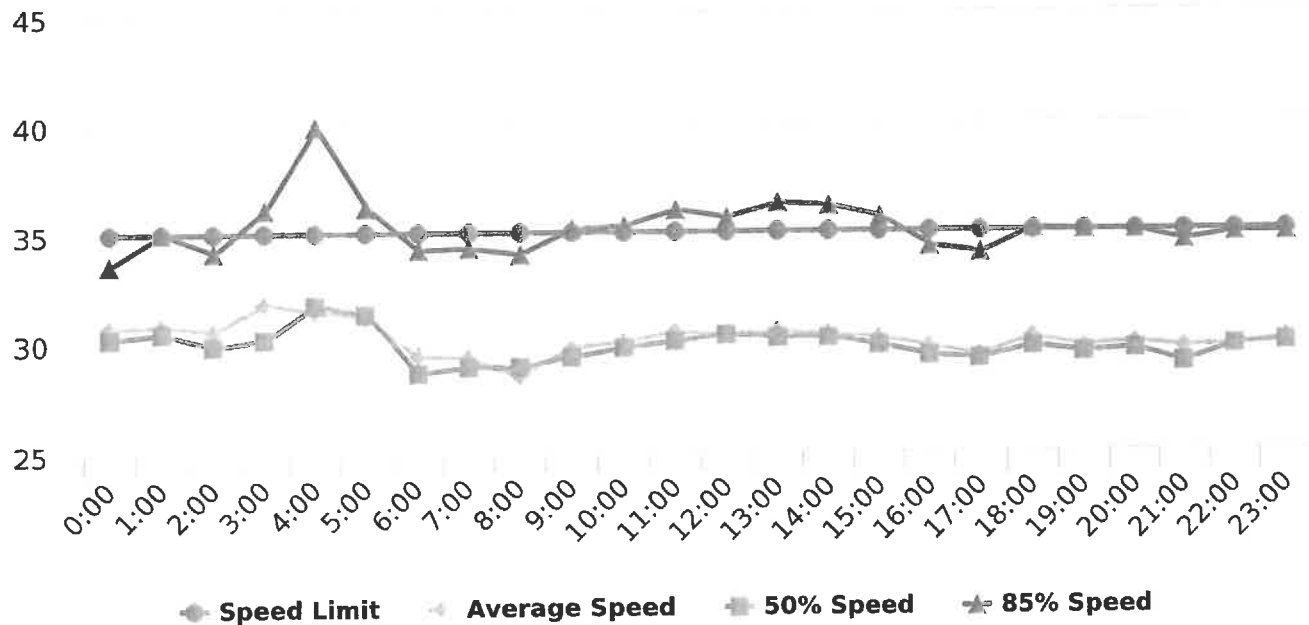
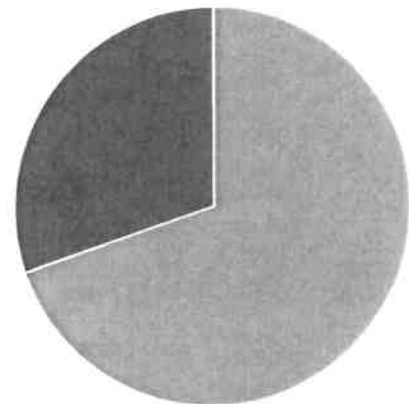
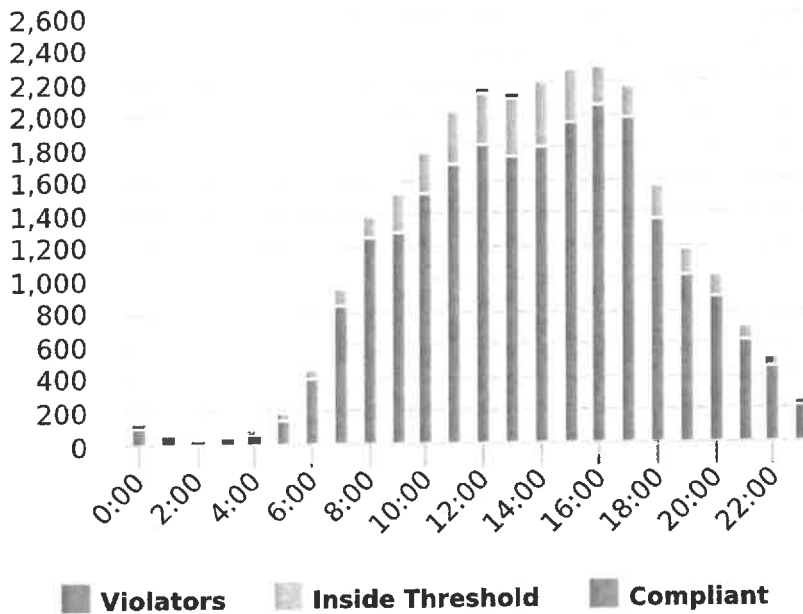
Time of Day: 0:00 to 23:59
 Dates: 12/13/2017 to 12/19/2017

Site: Beside Mt Nittany United Methodist Church, NB

Overall Summary

Total Days of Data: 7
 Speed Limit: 35
 Average Speed: 30.12
 50th Percentile Speed: 29.79
 85th Percentile Speed: 35.21
 Pace Speed Range: 25.0-35.0

Minimum Speed: 5.0
 Maximum Speed: 60.0
 Display Status: Speed Display
 Average Volume per Day: 3900.1
 Total Volume: 27301.0





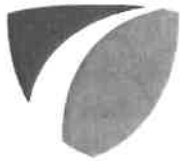
Extended Speed Summary Report

Generated by Max Wicklein from All Traffic Solutions General Sales Demo Account on Dec 20, 2017 at 9:5:29 AM

Time of Day: 0:00 to 23:59
Dates: 12/13/2017 to 12/19/2017

Site: Beside Mt Nittany United
Methodist Church, NB

Hours	Sign Mode	Speed Limit	Total # Vehicles	Total # Violator	% Violator	Avg # Vehicles	Avg # Violator	Min Speed	Max Speed	Avg Speed	50% Speed	85% Speed	Sign Effectiveness
0:00	Speed Display	35	126.0	0.0	0.0 %	15.8	0.0	20.0	45.0	30.7	30.2	33.6	69.5 %
1:00	Speed Display	35	73.0	1.0	1.4 %	10.4	0.1	7.0	47.0	30.8	30.5	35.0	79.0 %
2:00	Speed Display	35	43.0	1.0	2.3 %	6.1	0.1	13.0	54.0	30.6	29.9	34.1	76.6 %
3:00	Speed Display	35	59.0	2.0	3.4 %	8.4	0.3	18.0	52.0	31.8	30.2	36.1	67.1 %
4:00	Speed Display	35	94.0	4.0	4.3 %	13.4	0.6	6.0	51.0	31.4	31.7	39.9	66.9 %
5:00	Speed Display	35	191.0	4.0	2.1 %	27.3	0.6	7.0	54.0	31.1	31.3	36.1	74.7 %
6:00	Speed Display	35	463.0	7.0	1.5 %	66.1	1.0	5.0	52.0	29.4	28.6	34.2	73.3 %
7:00	Speed Display	35	956.0	4.0	0.4 %	136.6	0.6	5.0	47.0	29.3	28.9	34.3	63.9 %
8:00	Speed Display	35	1405.0	9.0	0.6 %	200.7	1.3	6.0	50.0	28.4	28.9	34.0	64.6 %
9:00	Speed Display	35	1530.0	11.0	0.7 %	218.6	1.6	5.0	55.0	29.7	29.3	35.1	68.4 %
10:00	Speed Display	35	1782.0	11.0	0.6 %	254.6	1.6	6.0	51.0	30.0	29.7	35.3	66.9 %
11:00	Speed Display	35	2038.0	17.0	0.8 %	291.1	2.4	5.0	53.0	30.4	30.0	36.0	69.4 %
12:00	Speed Display	35	2150.0	17.0	0.8 %	307.1	2.4	5.0	49.0	30.3	30.3	35.6	69.2 %
13:00	Speed Display	35	2122.0	17.0	0.8 %	303.1	2.4	6.0	52.0	30.4	30.1	36.3	71.3 %
14:00	Speed Display	35	2222.0	20.0	0.9 %	317.4	2.9	5.0	55.0	30.3	30.1	36.1	67.4 %
15:00	Speed Display	35	2296.0	20.0	0.9 %	328.0	2.9	5.0	53.0	30.1	29.8	35.6	68.1 %
16:00	Speed Display	35	2297.0	5.0	0.2 %	328.1	0.7	6.0	60.0	29.7	29.3	34.3	70.0 %
17:00	Speed Display	35	2181.0	3.0	0.1 %	311.6	0.4	5.0	51.0	29.3	29.1	34.0	68.0 %
18:00	Speed Display	35	1568.0	5.0	0.3 %	224.0	0.7	5.0	49.0	30.1	29.7	35.1	72.5 %
19:00	Speed Display	35	1187.0	7.0	0.6 %	169.6	1.0	5.0	52.0	29.7	29.4	35.0	67.6 %
20:00	Speed Display	35	1020.0	6.0	0.6 %	145.7	0.9	5.0	51.0	29.9	29.6	35.0	68.9 %
21:00	Speed Display	35	715.0	3.0	0.4 %	102.1	0.4	8.0	49.0	29.6	28.9	34.5	71.9 %
22:00	Speed Display	35	523.0	5.0	1.0 %	74.7	0.7	7.0	57.0	29.7	29.7	34.9	71.0 %
23:00	Speed Display	35	260.0	3.0	1.2 %	37.1	0.4	7.0	51.0	30.0	29.9	34.9	69.7 %
Total Volumes/Avg Speeds	Speed Display	35	27301.0	182.0	1.1 %	3897.9	26.0	5.0	60.0	30.1	29.8	35.2	69.8 %
Total/Avg w/o Feedback			0.0	0.0	0.0 %	0.0	0.0	0.0	0.0	0.0	0.0	0.0	0.0 %
Total/Avg w/ Feedback			27301.0	182.0	1.1 %	3897.9	26.0	5.0	60.0	30.1	29.8	35.2	69.8 %



Generated by Max Wicklein from All Traffic Solutions General Sales Demo Account on Dec 20, 2017 at 9:0:59 AM

Time View: By Day of Week (Avg Volumes)
 Speed Bins: Size 5, Range 1 to 100
 Site: Beside Mt Nittany United Methodist Church, NB

Time of Day: 0:00 to 23:59
 Dates: 12/13/2017 to 12/19/2017

Day of Week	00:00	01:00	02:00	03:00	04:00	05:00	06:00	07:00	08:00	09:00	10:00	11:00	12:00	13:00	14:00	15:00	16:00	17:00	18:00	19:00	20:00	21:00	22:00	23:00	Total
Sun	23	18	13	9	5	13	16	36	117	146	232	242	279	264	249	240	222	207	162	136	141	79	55	22	2926
Mon	8	5	3	8	13	32	88	172	282	243	252	296	307	326	302	365	342	377	236	173	134	87	79	45	4175
Tue	13	13	4	9	12	44	84	175	230	223	284	352	348	346	357	364	388	373	266	163	138	125	66	38	4415
Wed	25	7	5	6	9	23	93	185	240	230	259	286	302	282	339	366	353	343	230	194	156	98	60	26	4117
Thu	4	7	6	9	26	35	69	146	181	222	259	250	296	329	356	368	353	368	232	183	175	128	90	39	4131
Fri	22	8	5	6	16	27	79	188	235	254	257	284	320	309	335	333	391	328	223	172	144	113	93	47	4189
Sat	31	15	7	12	13	17	34	54	120	212	239	328	298	266	284	260	248	185	219	166	132	85	80	43	3348
Avg #	18	10	6	8	13	27	66	137	201	219	255	291	307	303	317	328	328	312	224	170	146	102	75	37	3900



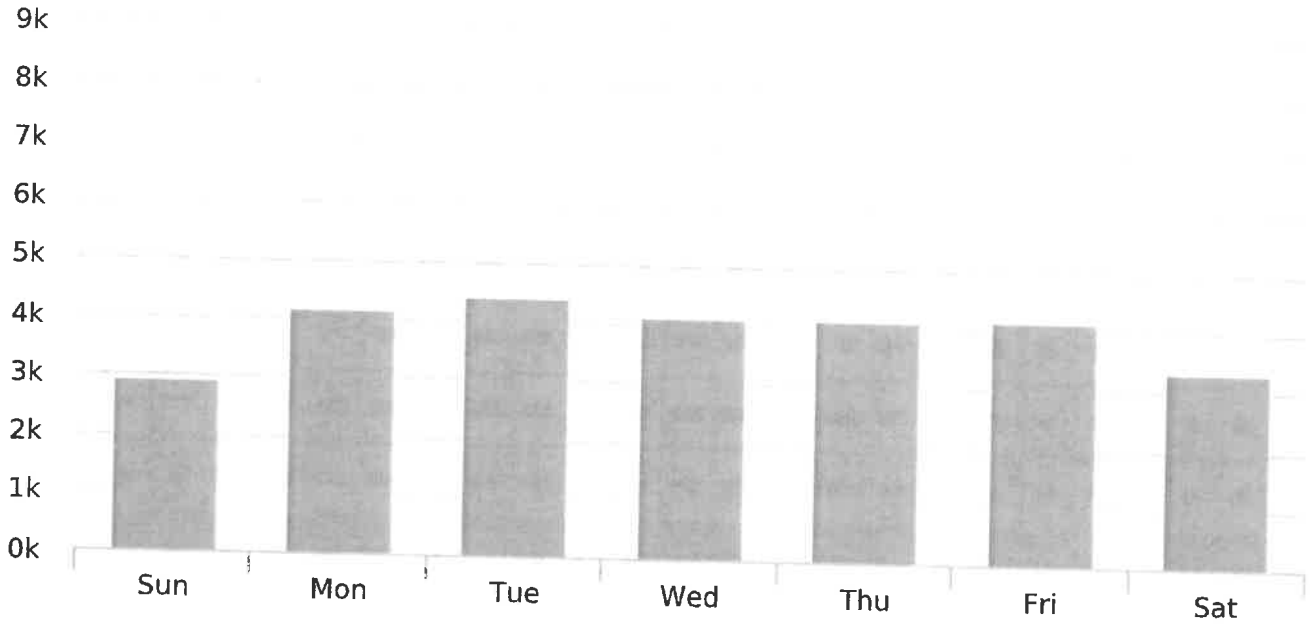
Volume By Time Report

Generated by Max Wicklein from All Traffic Solutions General Sales Demo Account on Dec 20, 2017 at 9:0:59 AM

Time of Day: 0:00 to 23:59
Dates: 12/13/2017 to 12/19/2017

Time View: By Day of Week (Avg Volumes)
Speed Bins: Size 5, Range 1 to 100
Site: Beside Mt Nittany United Methodist Church, NB

Volume by Day





Enforcement Priorities Report

Generated by Max Wicklein from All Traffic Solutions General Sales Demo Account on Dec 20, 2017 at 9:6:12 AM

Violation Threshold: Speed Limit + 10
 Time of Day: 0:00 to 23:59
 Dates: 12/13/2017 to 12/19/2017

Rank Results By: 85% Speed
 Speed Bins: Size 5, Range 1 to 100
 Site: Beside Mt Nittany United Methodist Church, NB

#	Site	Day of Week	Time	Speed Limit	Average Speed	Average Violator Speed	85% Speed	Average # Vehicles	Average # Violators
1	Beside Mt Nittany United Methodist Church, NB	Monday	6:00 - 7:00	35	33.0	0.0	40.0	32.0	0.0
2	Beside Mt Nittany United Methodist Church, NB	Thursday	15:00 - 16:00	35	32.0	47.0	39.0	356.0	7.0
3	Beside Mt Nittany United Methodist Church, NB	Saturday	12:00 - 13:00	35	32.0	47.6	39.0	328.0	10.0
4	Beside Mt Nittany United Methodist Church, NB	Sunday	0:00 - 1:00	35	32.0	47.0	38.0	43.0	1.0
5	Beside Mt Nittany United Methodist Church, NB	Tuesday	14:00 - 15:00	35	30.0	49.0	38.0	346.0	4.0
6	Beside Mt Nittany United Methodist Church, NB	Tuesday	23:00 - 24:00	35	32.0	53.0	38.0	66.0	3.0
7	Beside Mt Nittany United Methodist Church, NB	Friday	0:00 - 1:00	35	32.0	51.0	38.0	39.0	1.0
8	Beside Mt Nittany United Methodist Church, NB	Saturday	8:00 - 9:00	35	32.0	47.0	38.0	54.0	1.0
9	Beside Mt Nittany United Methodist Church, NB	Sunday	1:00 - 2:00	35	32.5	0.0	37.5	23.0	0.0
10	Beside Mt Nittany United Methodist Church, NB	Tuesday	22:00 - 23:00	35	32.0	49.0	37.5	125.0	1.0
11	Beside Mt Nittany United Methodist Church, NB	Thursday	16:00 - 17:00	35	30.5	48.8	37.5	368.0	5.0
12	Beside Mt Nittany United Methodist Church, NB	Saturday	13:00 - 14:00	35	31.5	46.2	37.5	298.0	6.0
13	Beside Mt Nittany United Methodist Church, NB	Tuesday	15:00 - 16:00	35	31.0	49.3	37.0	357.0	6.0
14	Beside Mt Nittany United Methodist Church, NB	Wednesday	14:00 - 15:00	35	31.0	49.0	37.0	282.0	5.0
15	Beside Mt Nittany United Methodist Church, NB	Thursday	12:00 - 13:00	35	31.0	48.0	37.0	250.0	3.0
16	Beside Mt Nittany United Methodist Church, NB	Thursday	14:00 - 15:00	35	31.0	47.0	37.0	329.0	2.0
17	Beside Mt Nittany United Methodist Church, NB	Friday	7:00 - 8:00	35	31.5	49.8	37.0	79.0	4.0
18	Beside Mt Nittany United Methodist Church, NB	Saturday	1:00 - 2:00	35	31.5	0.0	37.0	31.0	0.0
19	Beside Mt Nittany United Methodist Church, NB	Saturday	14:00 - 15:00	35	31.0	46.0	37.0	266.0	1.0
20	Beside Mt Nittany United Methodist Church, NB	Monday	10:00 - 11:00	35	30.5	50.0	36.5	243.0	3.0
21	Beside Mt Nittany United Methodist Church, NB	Wednesday	16:00 - 17:00	35	31.0	47.0	36.5	366.0	7.0
22	Beside Mt Nittany United Methodist Church, NB	Thursday	13:00 - 14:00	35	31.0	47.5	36.5	296.0	2.0
23	Beside Mt Nittany United Methodist Church, NB	Sunday	14:00 - 15:00	35	31.0	49.0	36.0	264.0	2.0
24	Beside Mt Nittany United Methodist Church, NB	Sunday	15:00 - 16:00	35	31.0	49.8	36.0	249.0	4.0
25	Beside Mt Nittany United Methodist Church, NB	Sunday	20:00 - 21:00	35	31.0	49.5	36.0	136.0	2.0



Generated by Max Wicklein from All Traffic Solutions General Sales Demo Account on Dec 20, 2017 at 9:6:44 AM

Time of Day: 0:00 to 23:59

Dates: 12/13/2017 to 12/19/2017

Medium Risk Threshold: Speed Limit + 10

High Risk Threshold: Speed Limit + 20

Time View: By Hour (Avg Volumes)

Speed Bins: Size 5, Range 1 to 100

Site: Beside Mt Nittany United Methodist Church, NB

Date/Time Range	Speed Limit	Mode	Compliant	Low Risk	Medium Risk	High Risk	Total Num Vehicles
0:00	35	Speed Display	13	3	0	0	16
1:00	35	Speed Display	9	2	0	0	10
2:00	35	Speed Display	5	1	0	0	6
3:00	35	Speed Display	6	2	0	0	8
4:00	35	Speed Display	9	3	1	0	13
5:00	35	Speed Display	22	5	1	0	27
6:00	35	Speed Display	58	7	1	0	66
7:00	35	Speed Display	121	15	1	0	137
8:00	35	Speed Display	180	20	1	0	201
9:00	35	Speed Display	184	33	2	0	219
10:00	35	Speed Display	216	37	2	0	255
11:00	35	Speed Display	242	46	2	0	291
12:00	35	Speed Display	259	45	2	0	307
13:00	35	Speed Display	249	52	2	0	303
14:00	35	Speed Display	258	56	3	0	317
15:00	35	Speed Display	278	48	3	0	328
16:00	35	Speed Display	292	35	1	0	328
17:00	35	Speed Display	283	28	0	0	312
18:00	35	Speed Display	194	29	1	0	224
19:00	35	Speed Display	145	24	1	0	170
20:00	35	Speed Display	126	18	1	0	146
21:00	35	Speed Display	90	12	0	0	102
22:00	35	Speed Display	65	9	1	0	75
23:00	35	Speed Display	31	6	0	0	37
Avg # Vehicles			139	22	1	0	162



Generated by Max Wicklein from All Traffic Solutions General Sales Demo Account on Dec 20, 2017 at 9:6:44 AM

Time of Day: 0:00 to 23:59

Dates: 12/13/2017 to 12/19/2017

Medium Risk Threshold: Speed Limit + 10

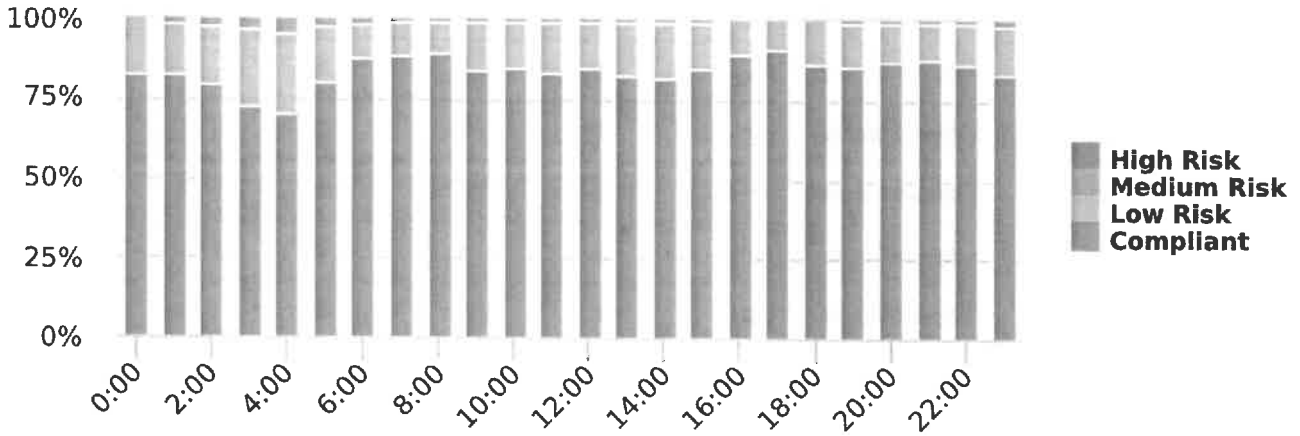
High Risk Threshold: Speed Limit + 20

Time View: By Hour (Avg Volumes)

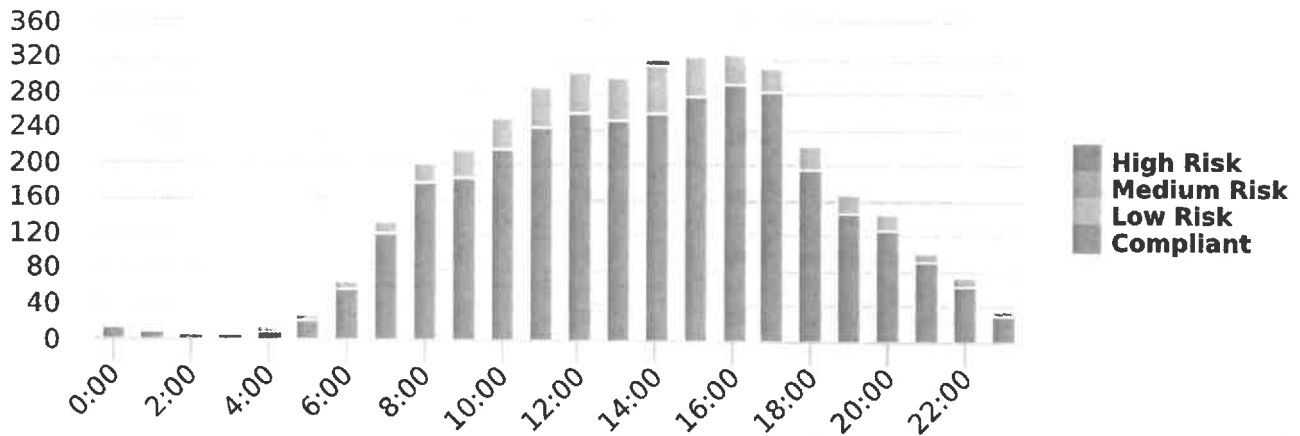
Speed Bins: Size 5, Range 1 to 100

Site: Beside Mt Nittany United Methodist Church, NB

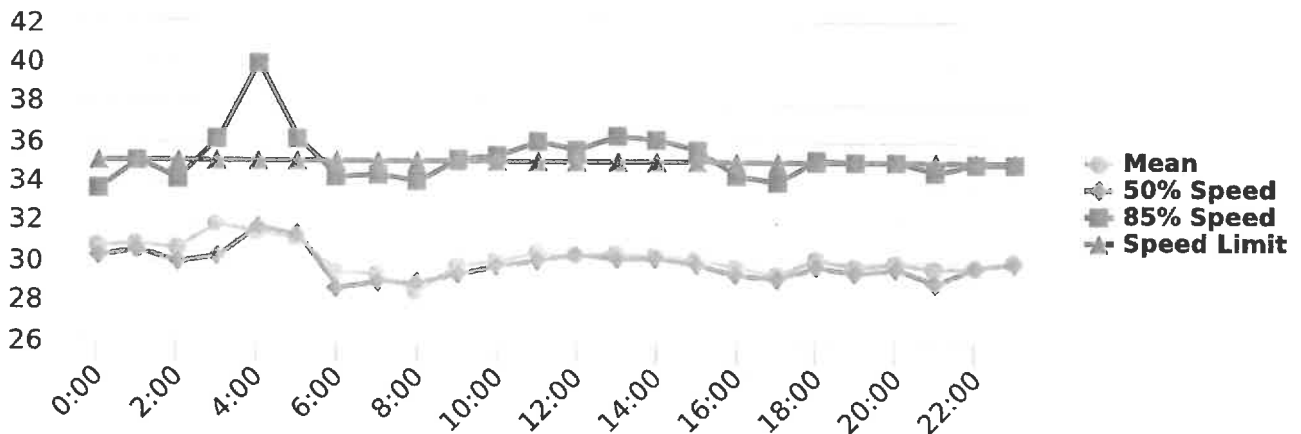
Compliance % by Hour



Compliance by Hour



Speeds





Generated by Max Wicklein from All Traffic Solutions General Sales Demo Account on Dec 20, 2017 at 9:9:53 AM

Medium Risk Threshold: Speed Limit + 10

High Risk Threshold: Speed Limit + 20

Time of Day: 0:00 to 23:59

Dates: 12/13/2017 to 12/19/2017

Time View: By Hour (Avg Volumes)

Speed Bins: Size 5, Range 1 to 100

Site: Beside Mt Nittany United Methodist Church, NB

Date/Time Range	Spd Lim	Sign Mode	Compliant Avg Final Speed	Compliant Change in Speed	Low Risk Avg Final Speed	Low Risk Change in Speed	Medium Risk Avg Final Speed	Medium Risk Change in Speed	High Risk Avg Final Speed	High Risk Change in Speed	% of Vehicles Slowed By
0:00	35	Speed Display	29.8	-2.7	39.3	-1.1	0.0	0.0	0.0	0.0	69.5 %
1:00	35	Speed Display	28.5	-2.9	39.6	-1.8	47.0	-1.0	0.0	0.0	79.0 %
2:00	35	Speed Display	28.7	-2.3	37.5	-2.5	54.0	-4.0	0.0	0.0	76.6 %
3:00	35	Speed Display	27.8	-2.2	39.6	-1.6	51.5	0.0	0.0	0.0	67.1 %
4:00	35	Speed Display	26.0	-0.7	40.2	-2.1	48.5	-1.5	0.0	0.0	66.9 %
5:00	35	Speed Display	28.5	-2.2	39.0	-1.2	49.5	-0.5	0.0	0.0	74.7 %
6:00	35	Speed Display	27.9	-2.0	39.0	-3.1	49.3	-3.0	0.0	0.0	73.3 %
7:00	35	Speed Display	27.8	-1.3	37.8	-1.2	46.8	-1.2	0.0	0.0	63.9 %
8:00	35	Speed Display	27.6	-1.7	38.2	-1.1	47.1	-0.4	0.0	0.0	64.6 %
9:00	35	Speed Display	28.2	-1.8	38.7	-1.4	48.5	-1.0	0.0	0.0	68.4 %
10:00	35	Speed Display	28.5	-1.9	38.5	-1.1	47.6	0.1	0.0	0.0	66.9 %
11:00	35	Speed Display	28.5	-2.0	38.9	-1.1	47.6	-1.4	0.0	0.0	69.4 %
12:00	35	Speed Display	28.7	-1.8	38.7	-1.4	46.6	-0.7	0.0	0.0	69.2 %
13:00	35	Speed Display	28.8	-2.0	38.7	-1.1	48.4	-0.3	0.0	0.0	71.3 %
14:00	35	Speed Display	28.3	-1.8	38.7	-0.7	48.6	-1.2	0.0	0.0	67.4 %
15:00	35	Speed Display	28.4	-1.8	38.6	-0.9	47.7	0.1	0.0	0.0	68.1 %
16:00	35	Speed Display	28.4	-1.9	38.1	-1.3	46.5	0.3	60.0	4.0	70.0 %
17:00	35	Speed Display	28.2	-1.8	38.3	-1.2	50.0	1.0	0.0	0.0	68.0 %
18:00	35	Speed Display	28.6	-2.3	38.6	-1.2	47.4	-0.4	0.0	0.0	72.5 %
19:00	35	Speed Display	28.3	-1.9	38.6	-1.5	49.1	-0.6	0.0	0.0	67.6 %
20:00	35	Speed Display	28.3	-1.9	38.7	-1.2	47.7	-0.3	0.0	0.0	68.9 %
21:00	35	Speed Display	28.0	-2.2	38.8	-1.4	48.0	-1.7	0.0	0.0	71.9 %
22:00	35	Speed Display	28.3	-2.4	38.7	-1.5	49.3	-0.2	57.0	-3.0	71.0 %
23:00	35	Speed Display	28.1	-2.1	39.7	-2.0	49.0	-1.3	0.0	0.0	69.7 %



Generated by Max Wicklein from All Traffic Solutions General Sales Demo Account on Dec 20, 2017 at 9:9:53 AM

Medium Risk Threshold: Speed Limit + 10

High Risk Threshold: Speed Limit + 20

Time of Day: 0:00 to 23:59

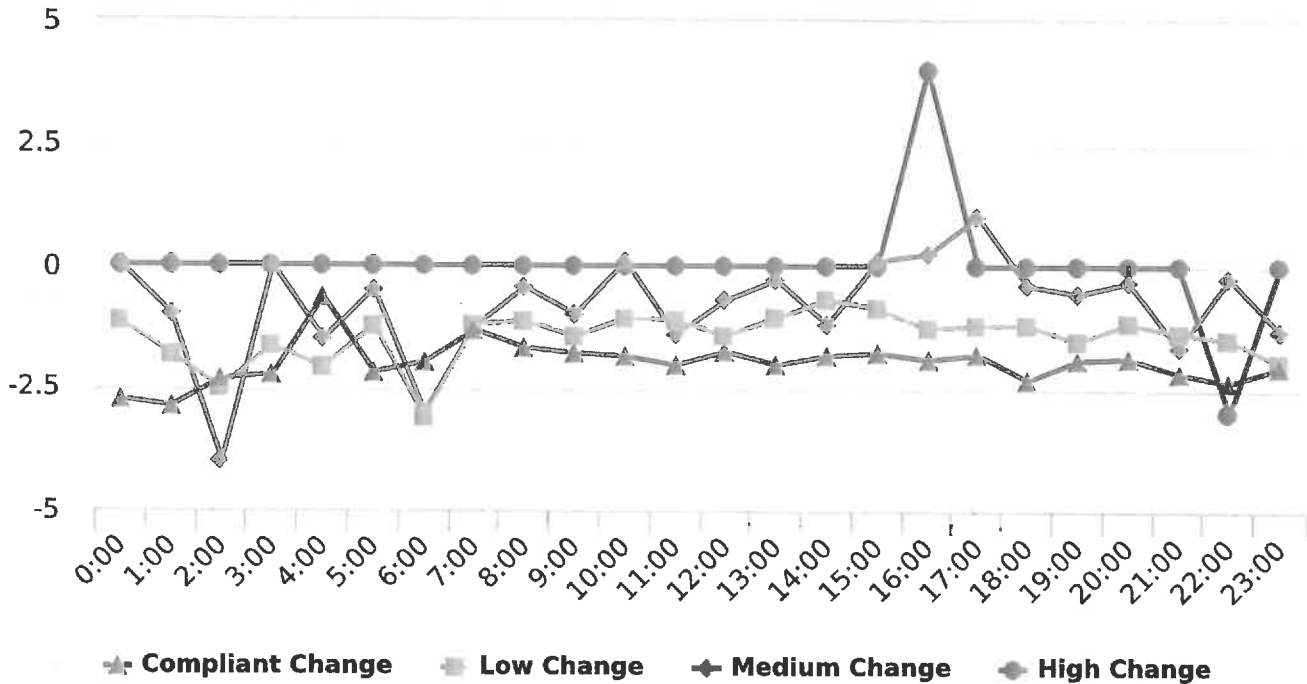
Dates: 12/13/2017 to 12/19/2017

Time View: By Hour (Avg Volumes)

Speed Bins: Size 5, Range 1 to 100

Site: Beside Mt Nittany United Methodist Church, NB

Changes in Speed by Risk Threshold



Volume by Hour

