

Case 16Cell 1009

3800R Fern Valley Road



Land, Development & Transportation Committee
Steve Hendrix, Planning Supervisor
January 26, 2017

Request

Cell Tower

150 foot tower, 10 foot lightning arrestor

TOTAL HEIGHT: 160 feet

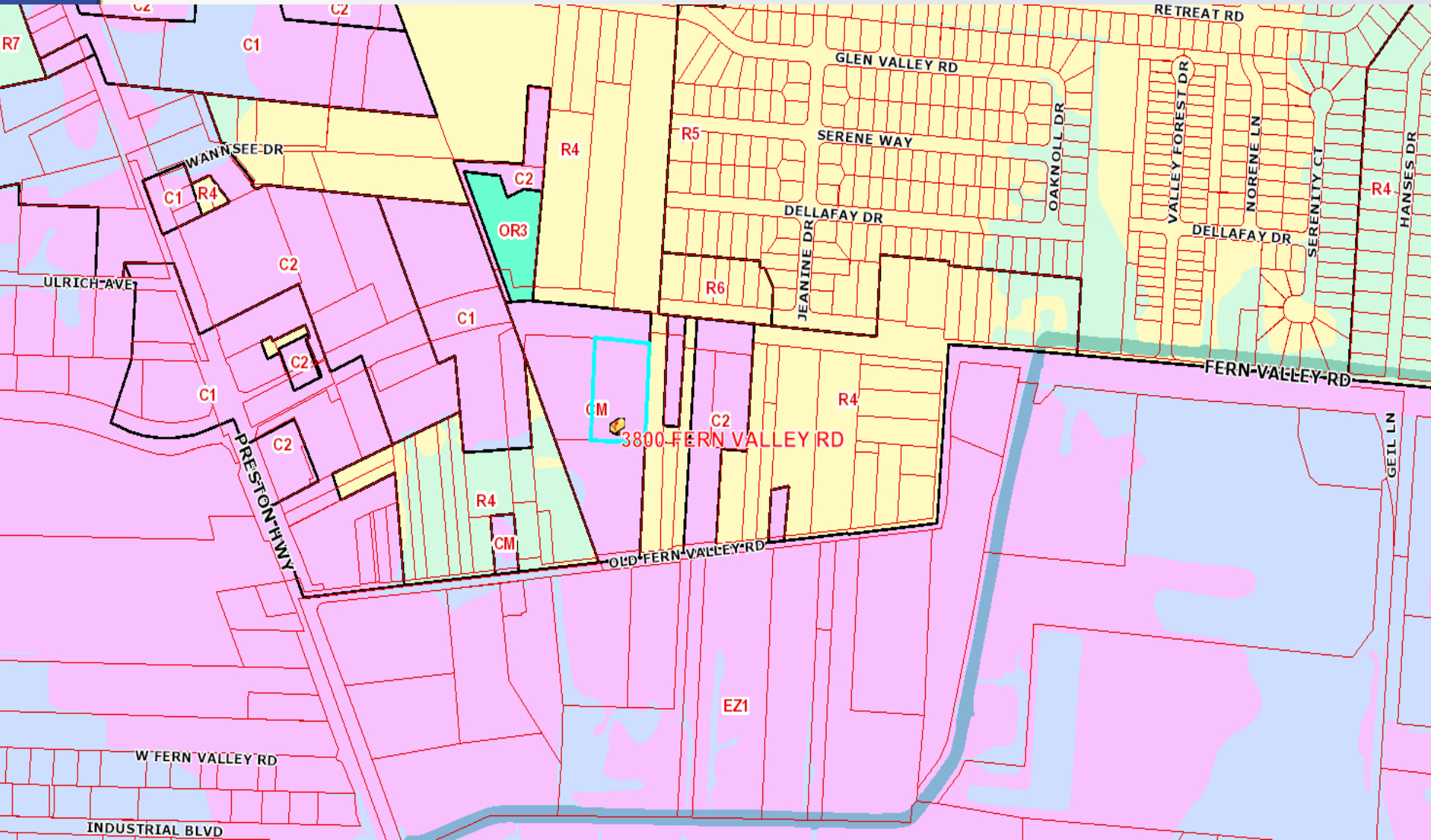
Compound Area: 2,500 square feet

Revised Detailed District Development Plan

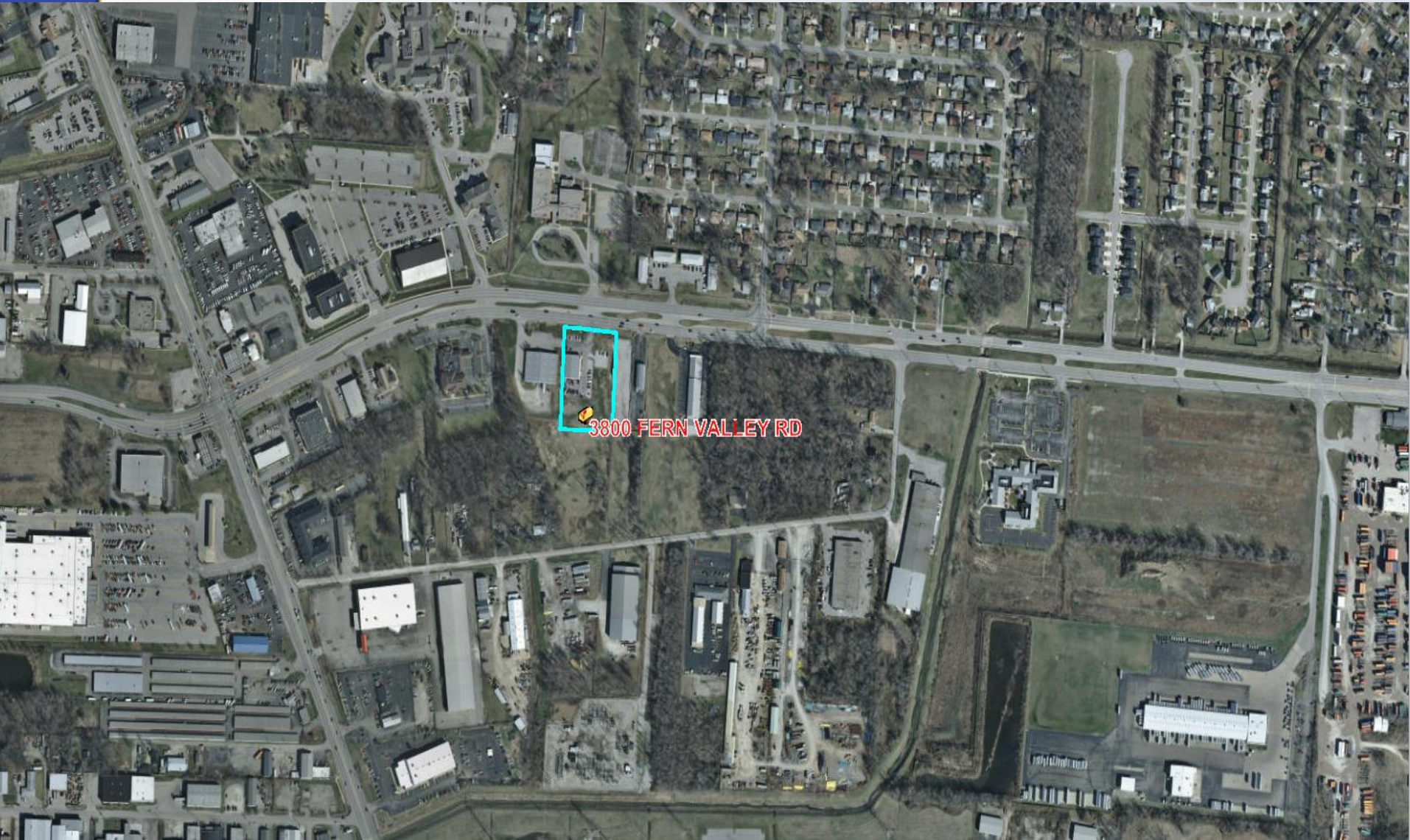
Landscape Buffers (reduction in buffer widths)

5 feet on south, east and west sides, zero on north side.

Zoning Map

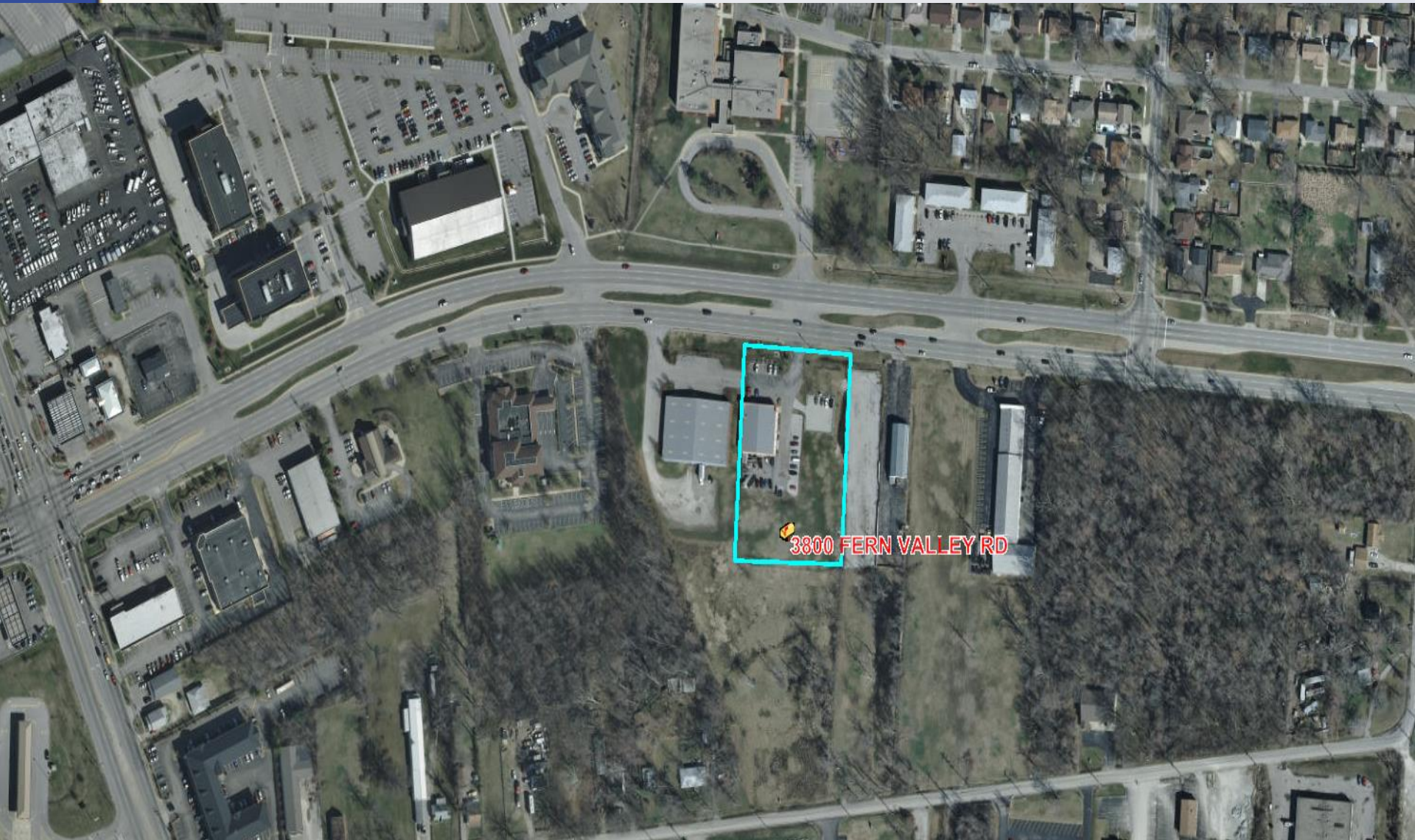


Aerial Map



3800 FERN VALLEY RD

Aerial Map



Aerial Map



3800 FERN VALLEY RD

Front of site



Looking north toward Fern Valley Road from monopole site



Looking South toward Old Fern Valley Road



Looking east from site



Looking west toward Preston Highway



Staff Conclusion

- Located in a C-M Zoning District
- 300 feet from Fern Valley Road
- 400 feet from Old Fern Valley Road
- Approximately 700 feet from Slaughter Elementary School building
- Partially screened by the existing vegetation and structures
- Have a total of 4 carriers
- No lighting
- Compound screened with 8 foot high wooden fence and landscaping
- Other zoned commercial properties in the area
- 150 foot tower with 10 foot lightning arrestor—160 feet total

Required Actions

Approve or Deny:

1. 160 foot cell tower with 2,500 square foot compound area.
2. Revised Detailed District Development Plan.
3. Reduction in the width of the landscape buffers to 5 feet on the south, east and west sides; zero on the north side with 17 arborvitae or its equivalent along the south, east and west sides.