

SITE DATA: LOT 1 & 2
HISTORIC PRESERVATION DISTRICT
EXISTING ZONING: E21
PROPOSED MAX. FLOOR AREA RATIO: VACANT/INDUSTRIAL STADIUM
PROPOSED LAND USE: STADIUM
TOTAL LAND AREA: 12,888 AC.
PARKING PROVIDED: N/A
TOTAL PARKING PROVIDED: 88 SPACES

STADIUM PROGRAMMABLE BUILDING AREA 111,220 ± S.F.
(N.L.C. FIELD & OUTDOOR PLAZAS)
BUILDING AREA (DRIP-LINE) 222,000 ± S.F.
BUILDING HEIGHT (3 STORIES) 45' ± ABOVE MAIN CONCOURSE
STADIUM SEATS
PHASE 1: 10,000 SEATS
PHASE 2: 20,000 SEATS

AMENITY AREA
TOTAL SUPPORT BUILDING AREA: 40,408 ± S.F.
AMENITY AREA REQUIRED (10%): 4,041 ± S.F.
AMENITY AREA PROVIDED: 85,813 ± S.F.
INCLUDES 20 BENCHES

*SURPLUS AMENITY AREA OF 81,772 ± S.F. TO BE APPLIED TO ADJACENT FUTURE BUILDINGS "B" & "C" AND FUTURE OFFSITE BUILDINGS "D" & "E" FROM APPROVED DEVELOPMENT PLAN #1805EPLANT038

TREE CANOPY DATA:
GROSS SITE AREA: 548,114 ± S.F.
TREE CANOPY CATEGORY: CLASS A
EXISTING TREE CANOPY: 0 ± S.F. (0%)
EXISTING TREE CANOPY TO BE PRESERVED: 0 ± S.F. (0%)
TOTAL TREE CANOPY REQUIRED: 54,811 ± S.F. (10%)

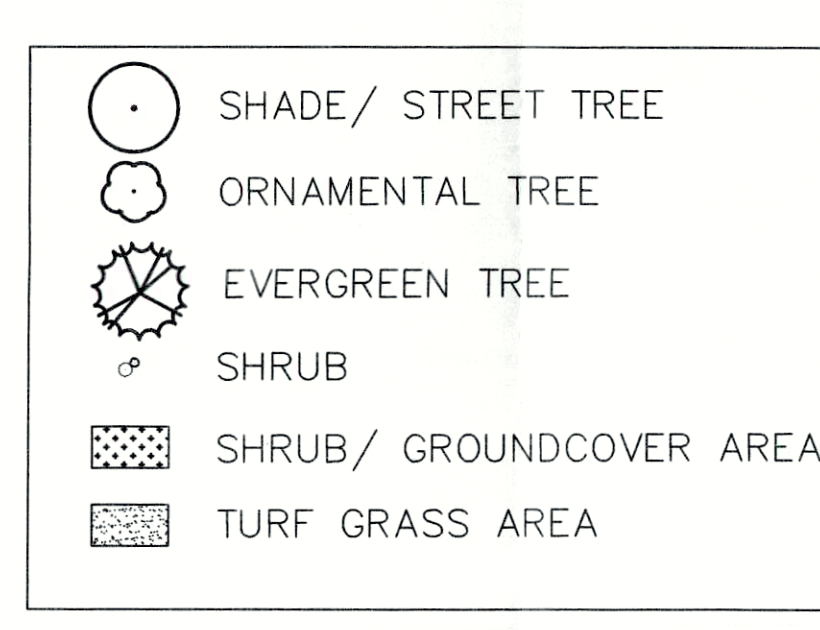
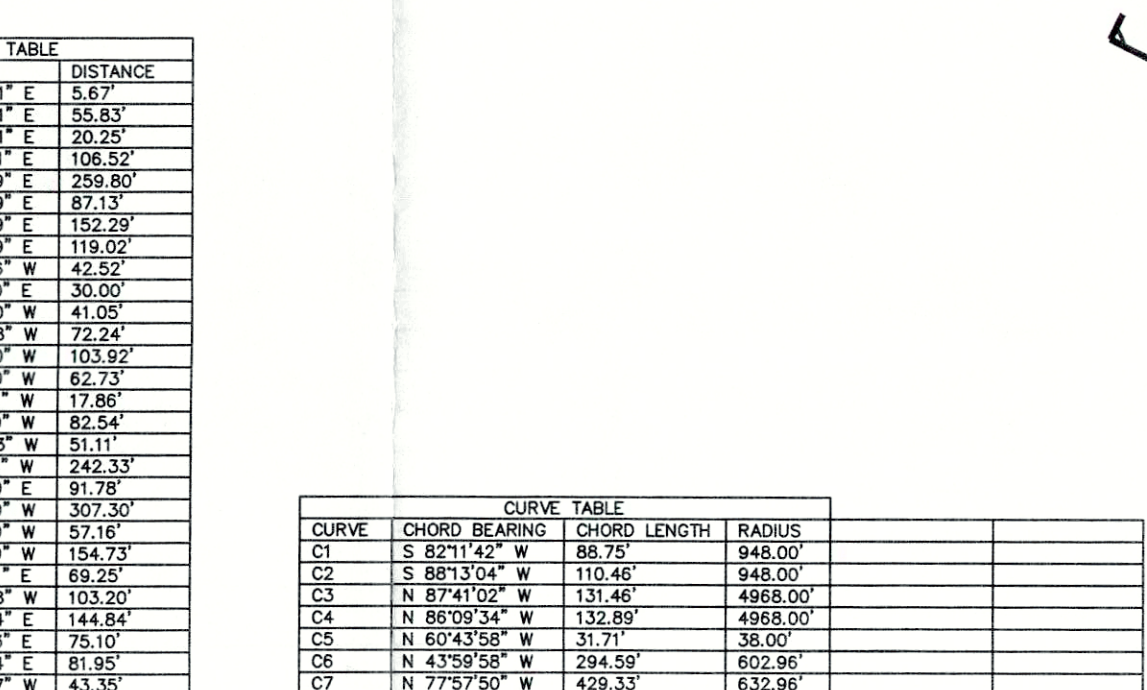
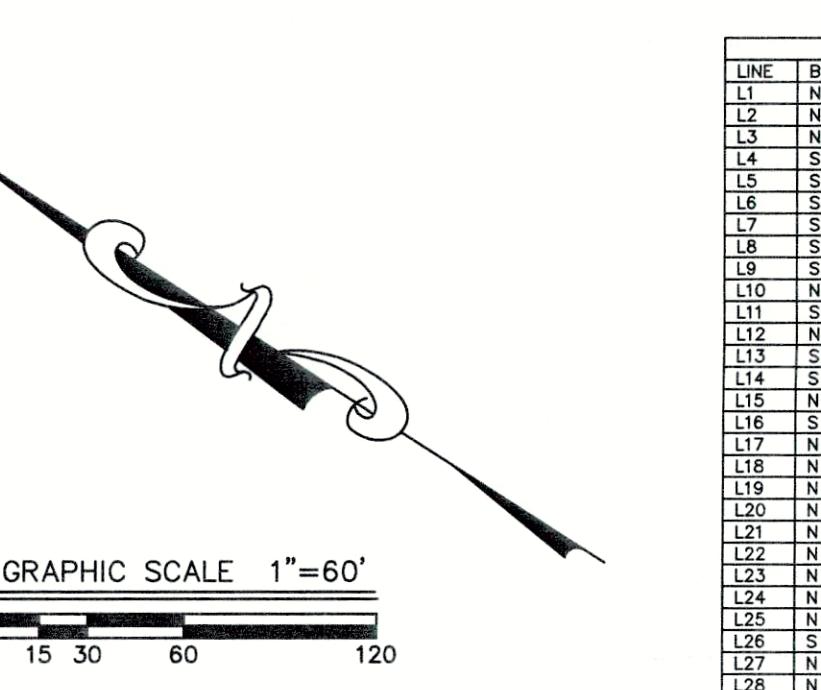
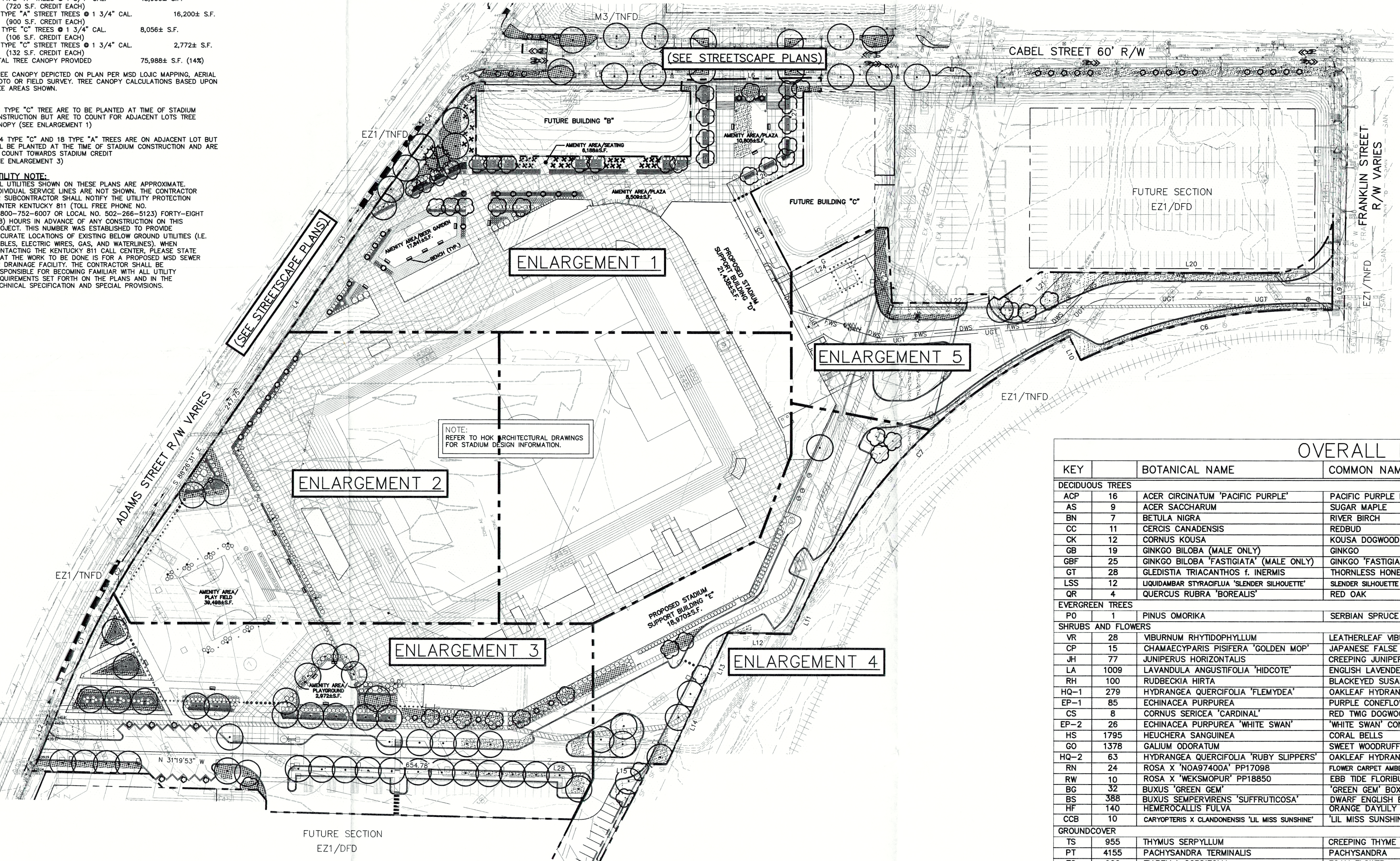
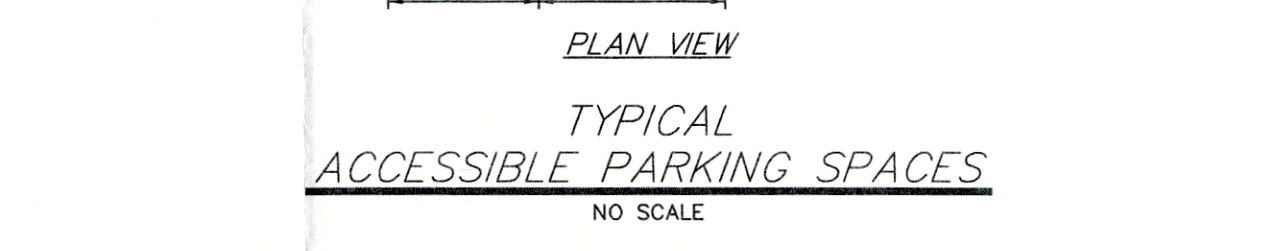
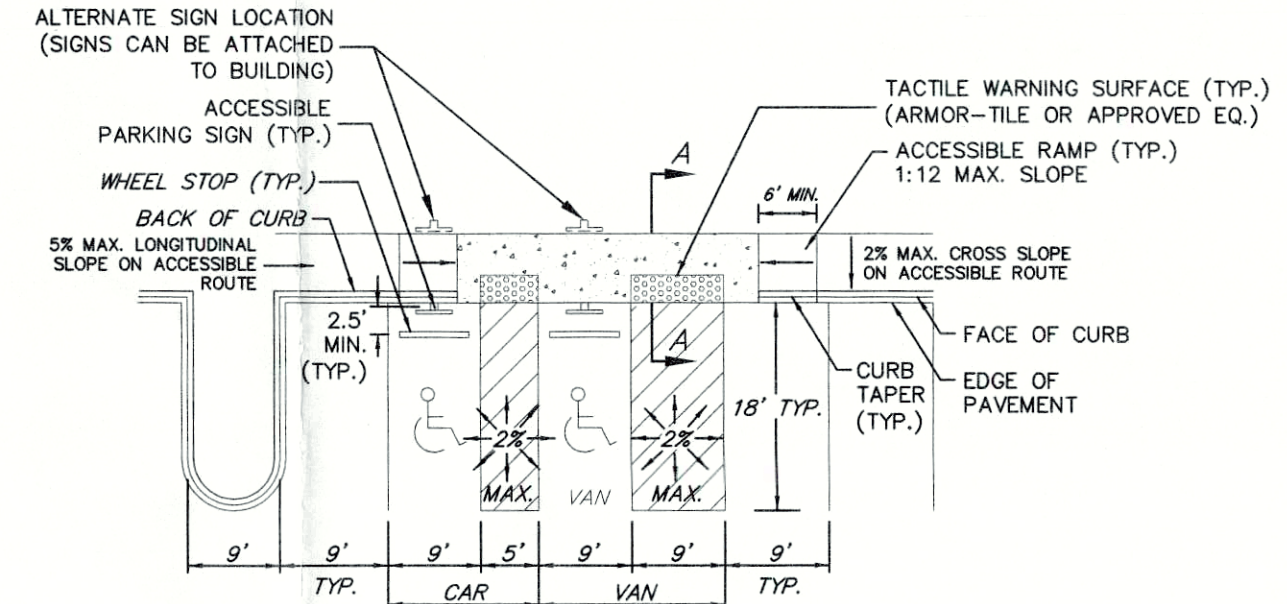
TREE CANOPY TO BE PLANTED:
68 TYPE "A" TREES @ 1 3/4" CAL. (720 S.F. CREDIT EACH): 49,968 ± S.F.
18 TYPE "A" STREET TREES @ 1 3/4" CAL. (900 S.F. CREDIT EACH): 16,200 ± S.F.
76 TYPE "C" TREES @ 1 3/4" CAL. (106 S.F. CREDIT EACH): 8,056 ± S.F.
21 TYPE "C" STREET TREES @ 1 3/4" CAL. (132 S.F. CREDIT EACH): 2,772 ± S.F.
TOTAL TREE CANOPY PROVIDED: 75,996 ± S.F. (14%)

*TREE CANOPY DEPICTED ON PLAN PER MSD LOGIC MAPPING, AERIAL PHOTO OR FIELD SURVEY. TREE CANOPY CALCULATIONS BASED UPON TREE AREAS SHOWN.

** TYPE "C" TREE ARE TO BE PLANTED AT TIME OF STADIUM CONSTRUCTION BUT ARE TO COUNT FOR ADJACENT LOTS TREE CANOPY (SEE ENLARGEMENT 1)

*** TYPE "C" AND 18 TYPE "A" TREES ARE ON ADJACENT LOT BUT WILL BE PLANTED AT THE TIME OF STADIUM CONSTRUCTION AND ARE TO COUNT TOWARDS STADIUM CREDIT (SEE ENLARGEMENT 3)

UTILITY NOTE:
ALL UTILITIES SHOWN ON THESE PLANS ARE APPROXIMATE. INDIVIDUAL SERVICE LINES ARE NOT SHOWN. THE CONTRACTOR OR SUBCONTRACTOR SHALL NOTIFY THE UTILITY PROTECTION CENTER KENTUCKY 811 (TOLL FREE PHONE NO. 1-800-752-8007 OR LOCAL NO. 502-286-5123) FORTY-EIGHT (48) HOURS IN ADVANCE OF ANY CONSTRUCTION ON THIS PROJECT. THIS NUMBER WAS ESTABLISHED TO PROVIDE ACCURATE LOCATIONS OF EXISTING BELOW GROUND UTILITIES (I.E. CABLES, ELECTRIC WIRES, GAS, AND WATERLINES). WHEN CONTACTING THE KENTUCKY 811 CALL CENTER, PLEASE STATE THAT THE WORK TO BE DONE IS FOR A PROPOSED MSD SEMER OR DRAINAGE FACILITY. THE CONTRACTOR SHALL BE RESPONSIBLE FOR BECOMING FAMILIAR WITH ALL UTILITY REQUIREMENTS SET FORTH ON THE PLANS AND IN THE TECHNICAL SPECIFICATION AND SPECIAL PROVISIONS.

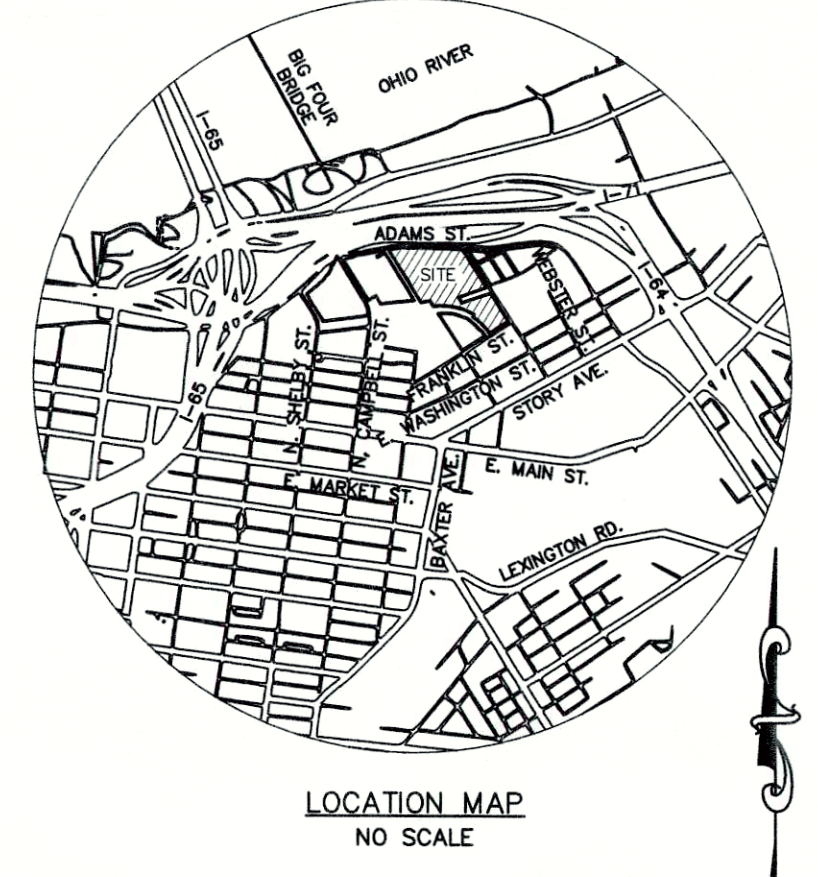


OVERALL PLANT LIST

KEY	BOTANICAL NAME	COMMON NAME	NOTES	SPACING	SIZE	TREE TYPE
DECIDUOUS TREES						
ACP	16 ACER CIRCINATUM 'PACIFIC PURPLE'	PACIFIC PURPLE MAPLE	MULTI-STEMMED	AS SHOWN	1 3/4"	C
AS	9 ACER SACCHARUM	SUGAR MAPLE		AS SHOWN	1 3/4"	A
BN	7 BETULA NIGRA	RIVER BIRCH	MULTI-STEMMED	AS SHOWN	1 3/4"	A
CC	11 CERCI CANADENSIS	REDBUD	MULTI-STEMMED	AS SHOWN	1 3/4"	C
CK	12 CORNUS KOUSA	KOUSA DOGWOOD	MULTI-STEMMED	AS SHOWN	1 3/4"	C
GB	19 GINKGO BILOBA (MALE ONLY)	GINKGO		AS SHOWN	1 3/4"	A
GSP	25 GINKGO BILOBA 'FASTIGIATA' (MALE ONLY)	GINKGO 'FASTIGIATA'		AS SHOWN	1 3/4"	C
GT	28 GLEDITIA TRIACANTHOS L. INERMIS	THORNLESS HONEYLOCUST		AS SHOWN	1 3/4"	A
LSS	12 LIQUIDAMBAR STYRACIFLIA 'SLENDER SILHOUETTE'	SLENDER SILHOUETTE SWETGUM		AS SHOWN	1 3/4"	C
QR	4 QUERCUS RUBRA 'BOREALIS'	RED DAK		AS SHOWN	1 3/4"	A
EVERGREEN TREES						
PO	1 PINUS OMORIKA	SERBIAN SPRUCE		AS SHOWN	8' HEIGHT	A
SHRUBS AND FLOWERS						
VR	28 VIBURNUM RHYTIDOPHYLLUM	LEATHERLEAF VIBURNUM		5' O.C.	#3 CONT.	
CP	15 CHAMAECYPARIS PISIFERA 'GOLDEN MOP'	JAPANESE FALSE CYPRESS		AS SHOWN	#3 CONT.	
JH	77 JUNIPERUS HORIZONTALIS	CREeping JUNIPER		5' O.C.	#1 CONT.	
LA	1008 LAVANDULA ANGUSTIFOLIA 'HIDCOTE'	ENGLISH LAVENDER		1.5' O.C.	#1 CONT.	
RH	100 RUBECCKIA HIRTA	BLACKEYED SUSAN		2' O.C.	#1 CONT.	
HQ-1	279 HYDRANGEA QUERCIFOLIA 'FLEMAYDEA'	OAKLEAF HYDRANGEA 'SNOW QUEEN'		4' O.C.	#3 CONT.	
EP-1	85 ECHINAGEA PURPUREA	PURPLE CONEFLOWER		2' O.C.	#1 CONT.	
CS	8 CORNUS SERICEA 'CARDINAL'	RED TWIG DOGWOOD		AS SHOWN	#5 CONT.	
EP-2	26 ECHINAGEA PURPUREA 'WHITE SWAN'	'WHITE SWAN' CONEFLOWER		2' O.C.	#1 CONT.	
HS	1795 HELIOPERS SANGUINEA	CORAL BELLS		1' O.C.	#1 CONT.	
GO	1376 GALIUM ODORATUM	SWEET WOODRUFF		1.5' O.C.	#1 CONT.	
HQ-2	63 HYDRANGEA QUERCIFOLIA 'RUBY SLIPPERS'	OAKLEAF HYDRANGEA 'RUBY SLIPPERS'		4' O.C.	#3 CONT.	
RN	24 ROSA X 'NOAB97400A' PP17098	FLOWER CARPET AMBER GROUND COVER ROSE		3' O.C.	#3 CONT.	
RW	10 ROSA X 'WEKSMOPUR' PP18850	EBB TIDE FLORIBUNDA ROSE		3' O.C.	#3 CONT.	
BG	32 BUXUS 'GREEN GEM'	'GREEN GEM' BOXWOOD		3' O.C.	#3 CONT.	
BS	388 BUXUS SEMPERVIRENS 'SUFFRUTICOSA'	DWARF ENGLISH BOXWOOD		2' O.C.	#1 CONT.	
HF	140 HEMEROCALLIS FULLA	ORANGE DAYLILY		2' O.C.	#1 CONT.	
CCB	10 CARYOPTERIS X GLANDONENSIS 'LIL MISS SUNSHINE'	'LIL MISS SUNSHINE' BLUEBEARD CARYOPTERIS		3' O.C.	#3 CONT.	
GROUND COVER						
TS	955 THYMUS SERPYLLUM	CREeping THYME		1' O.C.	4" POT	
PT	4155 PACHYSANDRA TERMINALIS	PACHYSANDRA		1.5' O.C.	4" POT	
TC	900 TIARELLA CORDIFOLIA	FOAM FLOWER		1.5' O.C.	4" POT	

STREETSCAPE PLANT LIST

KEY	BOTANICAL NAME	COMMON NAME	NOTES	SPACING	SIZE	TREE TYPE
DECIDUOUS TREES						
LS	21 LIQUIDAMBAR STYRACIFLIA 'SLENDER SILHOUETTE'	SLENDER SILHOUETTE SWETGUM		AS SHOWN	1 3/4"	C
PA	18 PLATANUS ACERIFOLIA	LONDON PLANETREE		AS SHOWN	1 3/4"	A
ORNAMENTAL GRASS						
MC	78 MUHLBERGIA CAPILLARIS	PINK MUHLGRASS		3' O.C.		
GROUND COVER						
PT	1350 PACHYSANDRA TERMINALIS	PACHYSANDRA		1.5' O.C.		



LOUISVILLE CITY

Project
LCFC Stadium
350 Adams Street
Louisville, KY 40206

Prepared For
Louisville City Stadium LLC
127 South 6th Street
Louisville, KY 40202
Contract No: 17.70079.00

h+k

Hellmuth, Obata + Kassabaum, Inc.
300 West 22nd Street
Kansas City, MO 64108 USA
t+1 816 472 3360 f+1 816 472 2100

All reproduction & intellectual property rights reserved © 2018
In Association with

Mindel Scott
Civil Engineer
5151 Jefferson Boulevard
Louisville, Kentucky 40219

Walter P Moore
Structural Engineer
1301 McKinney, Suite 1000
Houston, Texas 77001

CMTA
MEP Engineer
10411 Meeting Street
Prospect, Kentucky 40059

Ricca
Food Service Consultant
5151 Jefferson Boulevard
Louisville, Kentucky 40219

FSC, Inc.
Civil Consultant
9225 Indian Creek Parkway, Suite 300
Overland Park, KS 66210

Millennium Sports Technologies, Inc.
Sports Field Consultant
1893 West Kettle Avenue
Littleton, CO 80120

Key Plan

No.	Description	Date

PROJECT NUMBER: 17.70079.00
PHASE: CONSTRUCTION DOCUMENTS
SUBMISSION DATE: JUNE 25, 2018

Sheet Title
LANDSCAPE PLAN

RECEIVED
SEP 05 2018
PLANNING DEPARTMENT

PROJECT # 18LSCAPE1123
PROJECT # 17ZONE1050
MSD SUB # 6896

L100

18LSCAPE1123



Project
LCFC Stadium
 350 Adams Street
 Louisville, KY 40206
 Prepared For
Louisville City Stadium LLC
 127 South 6th Street
 Louisville, KY 40202
 Contract No: 17.70079.00



Hellmuth, Obata + Kassabaum, Inc.
 300 West 22nd Street
 Kansas City, MO 64108 USA
 t +1 816 472 3360 f +1 816 472 2100

All reproduction & intellectual property rights reserved © 2018
 In Association with:

Mindel Scott
 Civil Engineer
 5151 Jefferson Boulevard
 Louisville, Kentucky 40219

Walter P Moore
 Structural Engineer
 1301 McKinney, Suite 1000
 Houston, Texas 77001

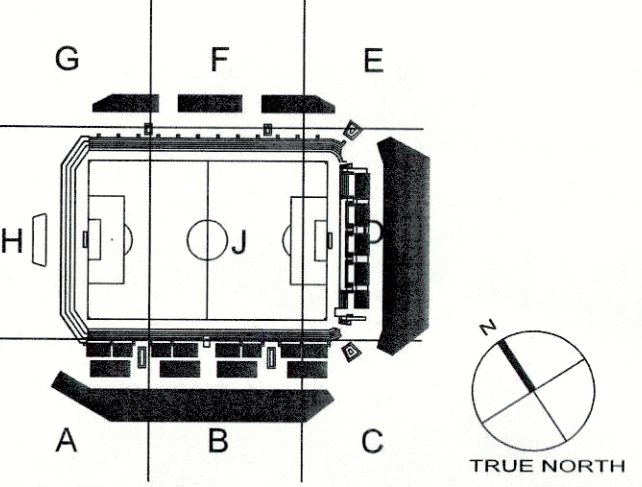
CMTA
 MEP Engineer
 10411 Meeting Street
 Prospect, Kentucky 40059

Ricca
 Food Service Consultant
 5151 Jefferson Boulevard
 Louisville, Kentucky 40219

FSC, Inc
 Code Consultant
 9225 Indian Creek Parkway, Suite 300
 Overland Park, KS 66210

Millennium Sports Technologies, Inc.
 Sports Field Consultant
 1993 West Kettle Avenue
 Littleton, CO 80120

Key Plan



Professional Seals



No.	Description	Date

PROJECT NUMBER: 17.70079.00
 PHASE: CONSTRUCTION DOCUMENTS
 SUBMISSION DATE: JUNE 25, 2018

RECEIVED
 SEP 05 2018
 PLANNING &
 DESIGN SERVICES

Sheet Title
LANDSCAPE PLAN

Original drawing is 42 x 30. Do not scale contents of this drawing.
 Sheet Number

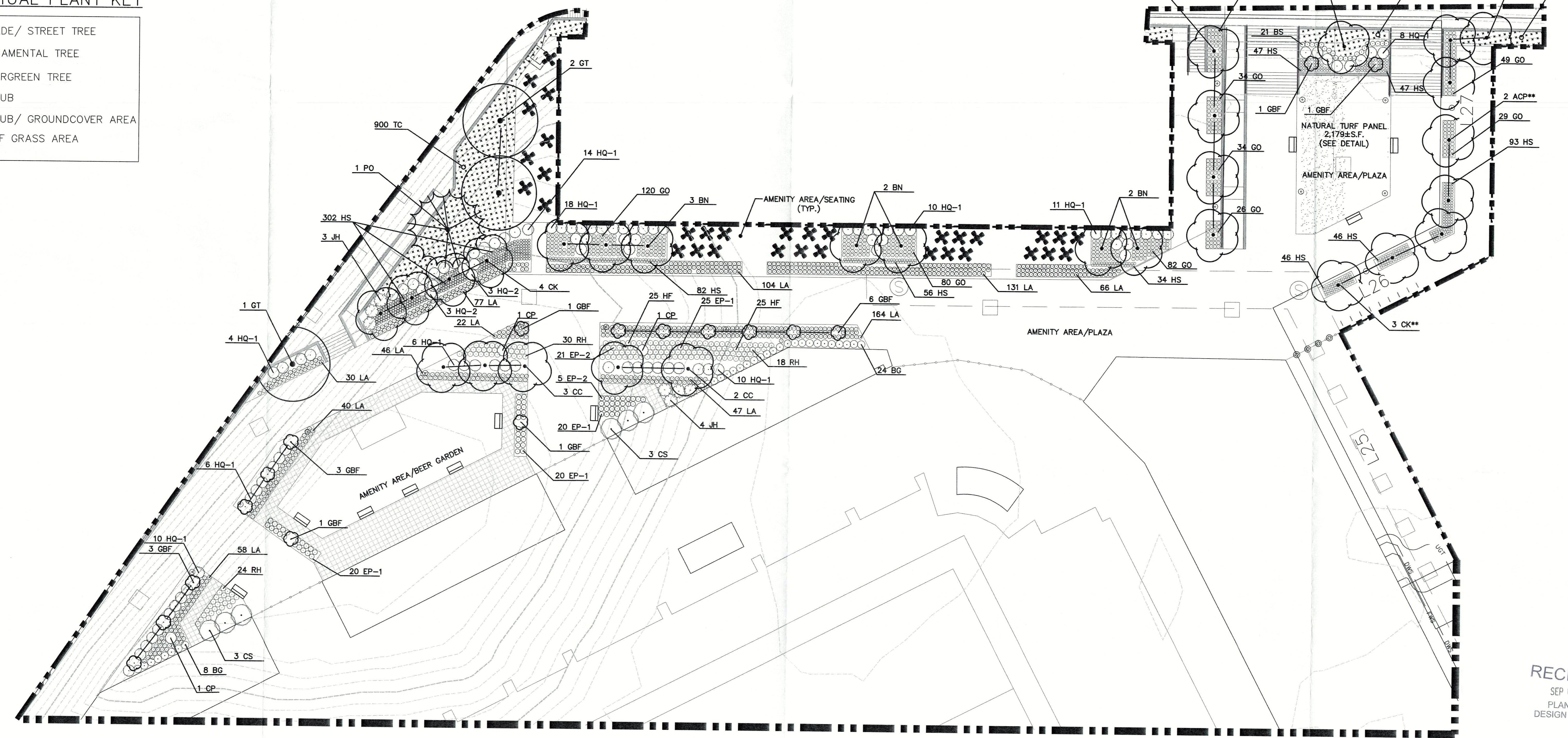
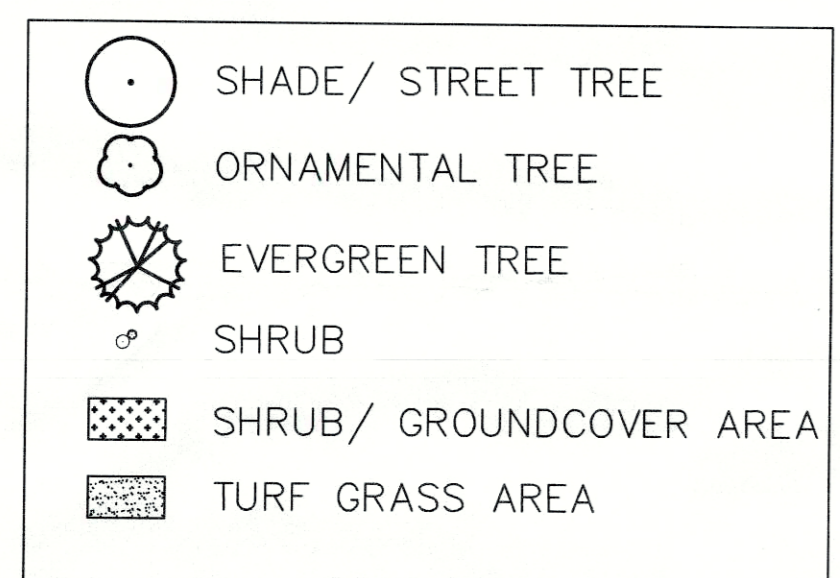
L101

18 LSCAPE 1123

KEY	BOTANICAL NAME	COMMON NAME	NOTES	TREE TYPE
DECIDUOUS TREES				
ACP	10 ACER CIRCINATUM 'PACIFIC PURPLE'	PACIFIC PURPLE MAPLE	MULTI-STEMMED	C
BN	7 BETULA NIGRA	RIVER BIRCH	MULTI-STEMMED	A
CC	5 CERCIS CANADENSIS	REDBUD	MULTI-STEMMED	C
CK	7 CORNUS KOUSA	KOUSA DOGWOOD	MULTI-STEMMED	C
GBF	17 GINKGO BILOBA 'FASTIGIATA' (MALE ONLY)	GINKGO 'FASTIGIATA'		C
GT	3 GLEDISIA TRIACANTHOS F. INERMIS	THORNLESS HONEYLOCUST		A
EVERGREEN TREES				
PO	1 PINUS OMORIKA	SERBIAN SPRUCE		A
SHRUBS AND FLOWERS				
CP	3 CHAMAECYPARIS PISIFERA 'GOLDEN MOP'	JAPANESE FALSE CYPRESS		
JH	7 JUNIPERUS HORIZONTALIS	CREeping JUNIPER		
LA	785 LAVANDULA ANGUSTIFOLIA 'HIDCOTE'	ENGLISH LAVENDER		
RH	72 RUDBECKIA HIRTA	BLACKEYED SUSAN		
HQ-1	97 HYDRANGEA QUERCIFOLIA 'FLEM'YDEA'	OAKLEAF HYDRANGEA 'SNOW QUEEN'		
EP-1	85 ECHINACEA PURPUREA	PURPLE CONEFLOWER		
CS	6 CORNUS SERICEA 'CARDINAL'	RED TWIG DOGWOOD		
EP-2	26 ECHINACEA PURPUREA 'WHITE SWAN'	'WHITE SWAN' CONEFLOWER		
HS	753 HEUCHERA SANGUINEA	CORAL BELLS		
GO	660 GALIUM ODORATUM	SWEET WOODRUFF		
HQ-2	6 HYDRANGEA QUERCIFOLIA 'RUBY SLIPPERS'	OAKLEAF HYDRANGEA 'RUBY SLIPPERS'		
BG	32 BUXUS 'GREEN GEM'	BOXWOOD		
BS	21 BUXUS SEMPERVIRENS 'SUFFRUTICOSA'	DWARF ENGLISH BOXWOOD		
HF	50 HEMEROCALLIS FULVA	ORANGE DAYLILY		
GROUND COVER				
PT	320 PACHYSANDRA TERMINALIS	PACHYSANDRA		
TC	900 TIARELLA CORDIFOLIA	FOAM FLOWER		

**8 TYPE "C" TREE ARE TO BE PLANTED AT TIME OF STADIUM CONSTRUCTION BUT ARE TO COUNT FOR ADJACENT LOTS TREE CANOPY (SEE ENLARGEMENT 1)

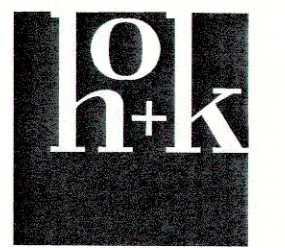
CONCEPTUAL PLANT KEY



ENLARGEMENT 1
 SCALE 1"=20'



Project
LCFC Stadium
 350 Adams Street
 Louisville, KY 40206
 Prepared For
Louisville City Stadium LLC
 127 South 6th Street
 Louisville, KY 40202
 Contract No: 17.70079.00



Hellmuth, Obata + Kassabaum, Inc.
 300 West 22nd Street
 Kansas City, MO 64108 USA
 t +1 816 472 3360 f +1 816 472 2100

All reproduction & intellectual property rights reserved © 2018
 In Association with:

Mindel Scott
 Civil Engineer
 5151 Jefferson Boulevard
 Louisville, Kentucky 40219

Walter P Moore
 Structural Engineer
 1301 McKinney, Suite 1000
 Houston, Texas 77701

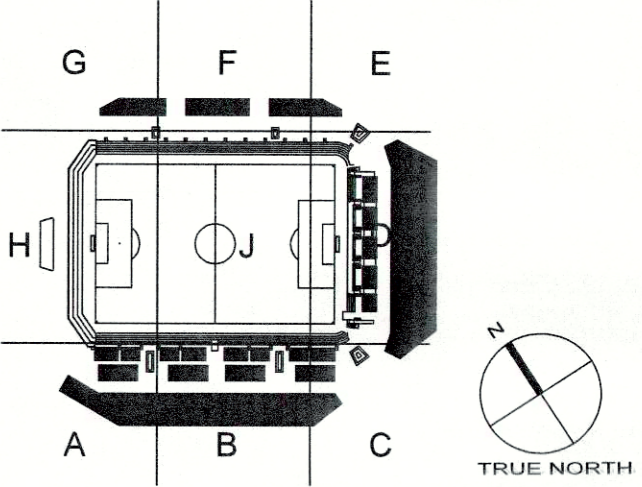
CMTA
 MEP Engineer
 10411 Meeting Street
 Prospect, Kentucky 40059

Ricca
 Food Service Consultant
 5151 Jefferson Boulevard
 Louisville, Kentucky 40219

FSC, Inc
 Code Consultant
 9225 Indian Creek Parkway, Suite 300
 Overland Park, KS 66210

Millennium Sports Technologies, Inc.
 Sports Field Consultant
 1853 West Kettle Avenue
 Littleton, CO 80120

Key Plan



Professional Seals



No. Description Date

No.	Description	Date

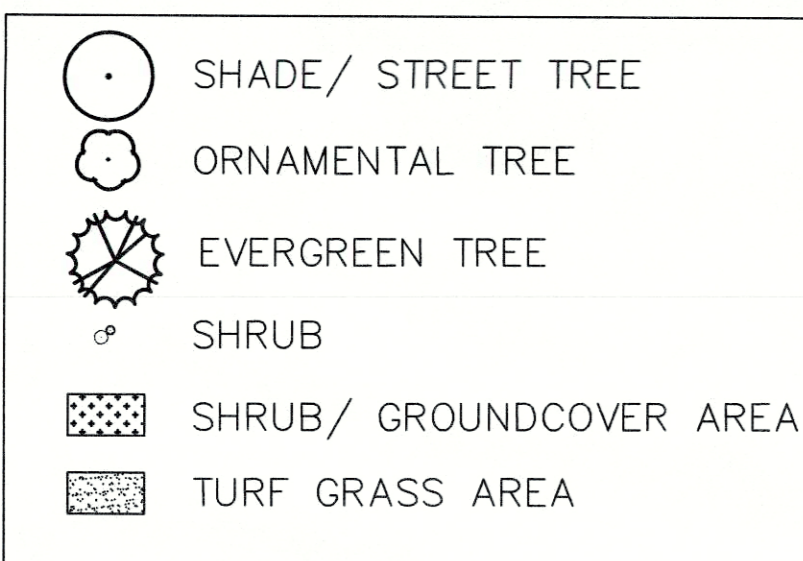
PROJECT NUMBER: 17.70079.00
 PHASE: CONSTRUCTION DOCUMENTS
 SUBMISSION DATE: JUNE 25, 2018

Sheet Title

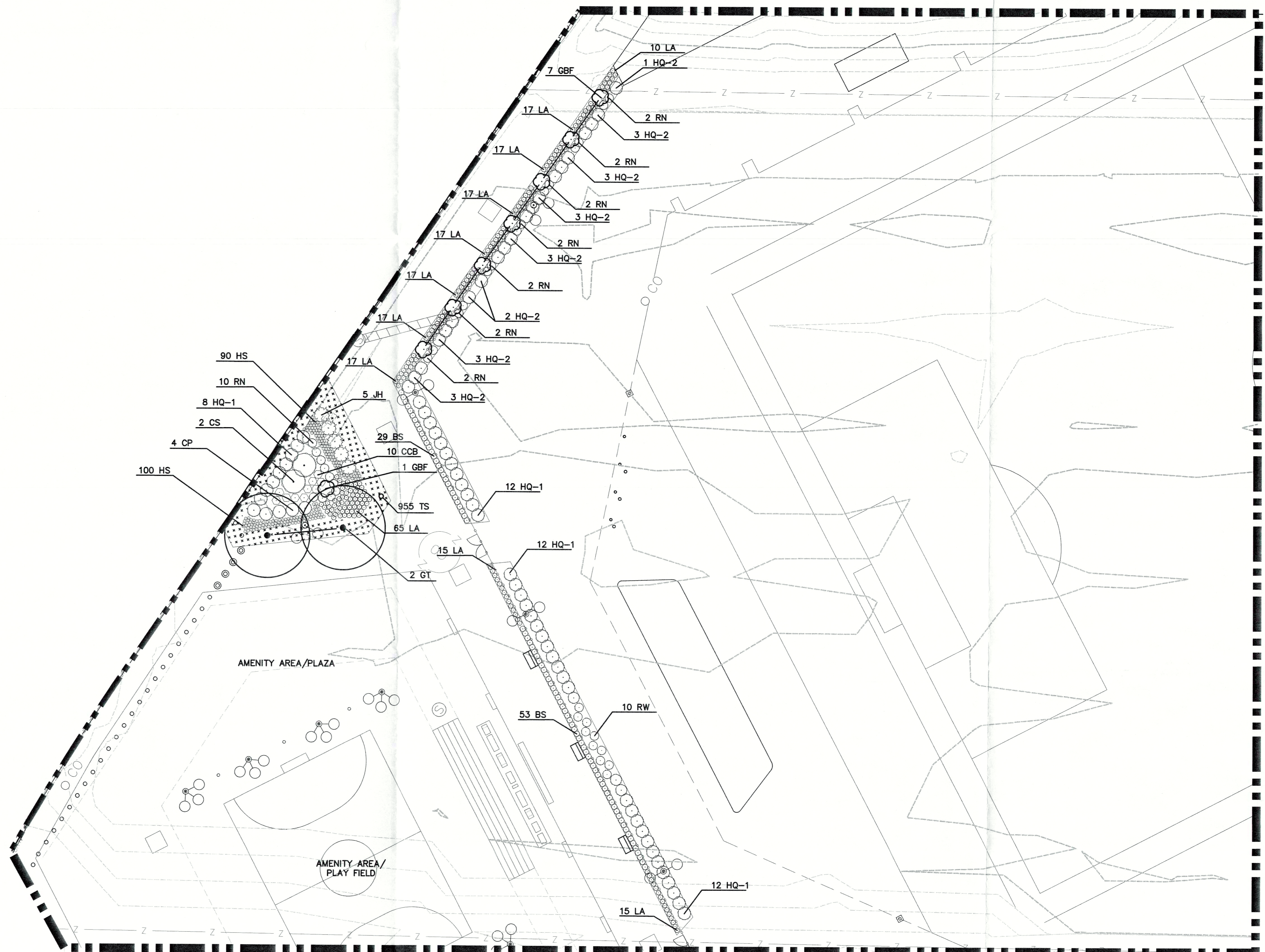
RECEIVED LANDSCAPE PLAN
 SEP 05 2018
 PLANNING &
 DESIGN SERVICES

PLANT LIST			
KEY	BOTANICAL NAME	COMMON NAME	TREE TYPE
DECIDUOUS TREES			
GBF	8 GINKGO BILOBA 'FASTIGIATA' (MALE ONLY)	GINKGO 'FASTIGIATA'	C
GT	2 GLEDISTIA TRIACANTHOS f. INERMIS	THORNLESS HONEYLOCUST	A
SHRUBS AND FLOWERS			
CCB	10 CARYOPTERIS X CLANDONENSIS 'LIL MISS SUNSHINE'	'LIL MISS SUNSHINE' BLUEBEARD CARYOPTERIS	
CP	4 CHAMAECYPARIS PISIFERA 'GOLDEN MOP'	JAPANESE FALSE CYPRESS	
JH	5 JUNIPERUS HORIZONTALIS	CREeping JUNIPER	
LA	224 LAVANDULA 'ANGUSTIFOLIA 'HIDCOTE'	ENGLISH LAVENDER	
HQ-1	44 HYDRANGEA QUERCIFOLIA 'FLEMINGIA'	OAKLEAF HYDRANGEA 'SNOW QUEEN'	
CS	2 CORNUS SERICEA 'CARDINAL'	RED TWIG DOGWOOD	
HS	190 HEUCHERA SANGUINEA	CORAL BELLS	
HQ-2	21 HYDRANGEA QUERCIFOLIA 'RUBY SLIPPERS'	OAKLEAF HYDRANGEA 'RUBY SLIPPERS'	
RN	24 ROSA X 'NOA97400A' PP17098	FLOWER CARPET AMBER GROUNDCOVER ROSE	
RW	10 ROSA X 'WEKSMOPUR' PP18850	EBB TIDE FLORIBUNDA ROSE	
BS	82 BUXUS SEMPERVIRENS 'SUFFRUTICOSA'	DWARF ENGLISH BOXWOOD	
GROUNDCOVER			
TS	955 THYMUS SERPYLLUM	CREeping THYME	

CONCEPTUAL PLANT KEY



ENLARGEMENT 2
 SCALE 1"=20'



CASE# 18LSCAPE1123
 PROJECT # 17ZONE1050
 MSD SUB # 6896

Sheet Number **L102**
 18 LScape 1123



Project
LCFC Stadium
 350 Adams Street
 Louisville, KY 40206
 Prepared For
Louisville City Stadium LLC
 127 South 6th Street
 Louisville, KY 40202
 Contract No: 17.70079.00

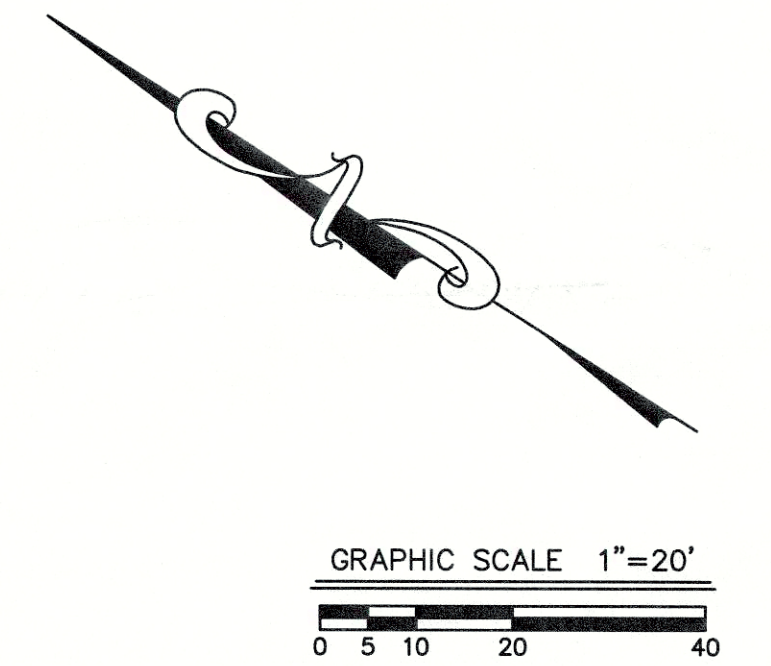
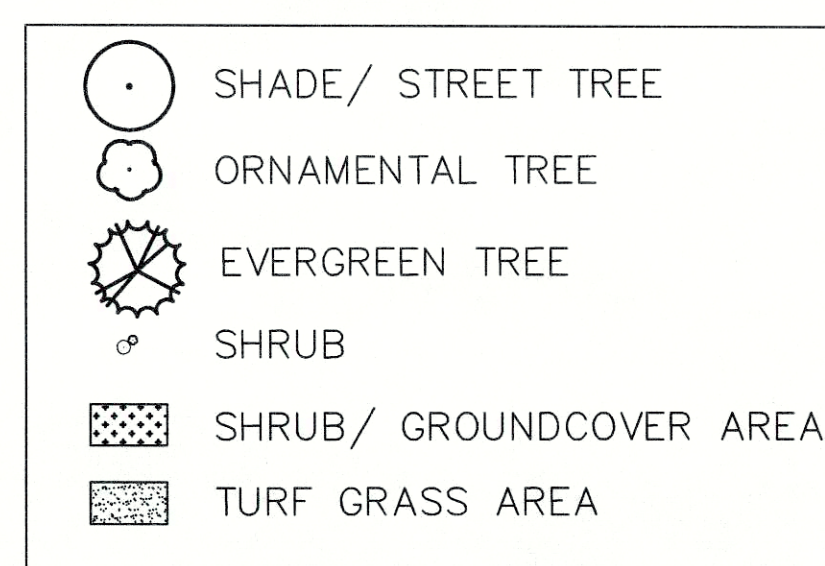


Hellmuth, Obata + Kassabaum, Inc.
 300 West 22nd Street
 Kansas City, MO 64108 USA
 t+1 816 472 3360 f+1 816 472 2100

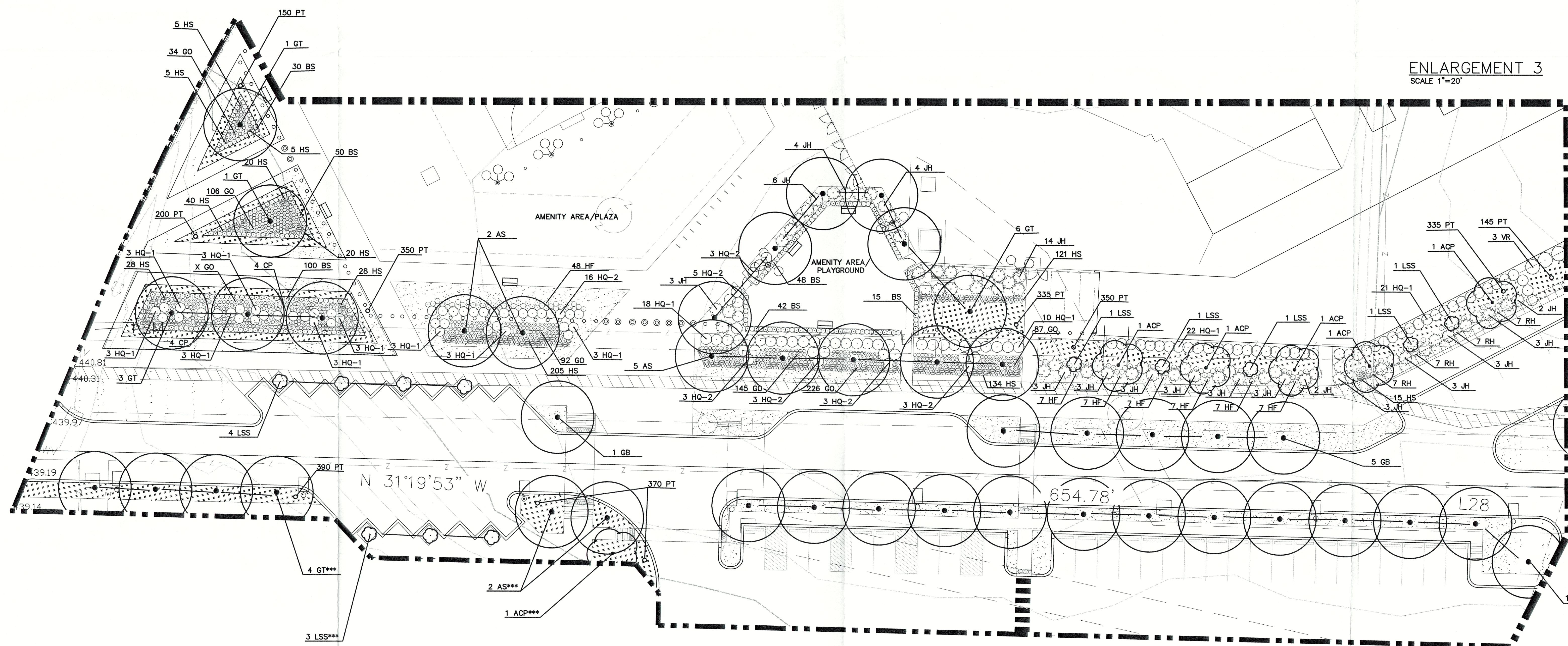
All reproduction & intellectual property rights reserved © 2018.
 In Association with
Mindel Scott
 Civil Engineer
 5151 Jefferson Boulevard
 Louisville, Kentucky 40219
Walter P Moore
 Structural Engineer
 1301 McKinney, Suite 1000
 Houston, Texas 77701
CMTA
 MEP Engineer
 10411 Meating Street
 Prospect, Kentucky 40059
Ricca
 Food Service Consultant
 5151 Jefferson Boulevard
 Louisville, Kentucky 40219
FSC, Inc.
 Code Consultant
 9225 Indian Creek Parkway, Suite 300
 Overland Park, KS 66210
Millennium Sports Technologies, Inc.
 Sports Field Consultant
 1893 West Kettie Avenue
 Littleton, CO 80120

PLANT LIST					
KEY		BOTANICAL NAME	COMMON NAME	NOTES	TREE TYPE
DECIDUOUS TREES					
ACP	6	ACER CIRCINATUM 'PACIFIC PURPLE'	PACIFIC PURPLE MAPLE	MULTI-STEMMED	C
AS	9	ACER SACCHARUM	SUGAR MAPLE		A
GB	19	GINKGO BILOBA (MALE ONLY)	GINKGO		A
GT	15	GLEDISTIA TRIACANTHOS f. INERMIS	THORNLESS HONEYLOCUST		A
LSS	12	LIQUIDAMBAR STRYACIFLUA 'SLENDER SILHOUETTE'	SLENDER SILHOUETTE SWEETGUM		C
SHRUBS AND FLOWERS					
CP	8	CHAMAECYPARIS PISIFERA 'GOLDEN MOP'	JAPANESE FALSE CYPRESS		
VR	3	VIBURNUM RHYTIDOPHYLLUM	LEATHERLEAF VIBURNUM		
JH	65	JUNIPERUS HORIZONTALIS	CREeping JUNIPER		
RH	28	RUDEBECKIA HIRTA	BLACKEYED SUSAN		
HQ-1	98	HYDRANGEA QUERCIFOLIA 'FLEMIDEA'	OAKLEAF HYDRANGEA 'SNOW QUEEN'		
HS	852	HEUCHERA SANGUINEA	CORAL BELLS		
GO	718	GALIUM ODORATUM	SWEET WOODRUFF		
HQ-2	36	HYDRANGEA QUERCIFOLIA 'RUBY SLIPPERS'	OAKLEAF HYDRANGEA 'RUBY SLIPPERS'		
BS	285	BUXUS SEMPERVIRENS 'SUFFRUTICOSA'	DWARF ENGLISH BOXWOOD		
HF	90	HEMEROCALLIS FULVA	ORANGE DAYLILY		
GROUNDCOVER					
PT	2625	PACHYSANDRA TERMINALIS	PACHYSANDRA		

CONCEPTUAL PLANT KEY



***4 TYPE 'C' AND 18 TYPE 'A' TREES ARE ON ADJACENT LOT BUT WILL BE PLANTED AT THE TIME OF STADIUM CONSTRUCTION AND ARE TO COUNT TOWARDS STADIUM CREDIT (SEE ENLARGEMENT 3)



ENLARGEMENT 3
 SCALE 1"=20'

Key Plan

Professional Seals

No. Description Date

No.	Description	Date

PROJECT NUMBER: 17.70079.00
 PHASE: CONSTRUCTION DOCUMENTS
 SUBMISSION DATE: JUNE 26, 2018

Sheet Title
LANDSCAPE PLAN

Original drawing is 42 x 30. Do not scale contents of this drawing.
 Sheet Number

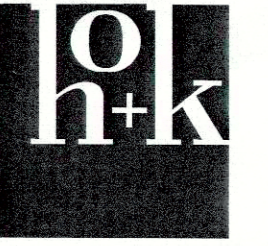
RECEIVED
 SEP 05 2018
 PLANNING &
 DESIGN SERVICES

CASE# 18LSCAPE1123
 PROJECT # 17ZONE1050
 MSD SUB # 6896

L103
 18 LSCAPE 1 1 2 3



Project
LCFC Stadium
 350 Adams Street
 Louisville, KY 40206
 Prepared For
Louisville City Stadium LLC
 127 South 8th Street
 Louisville, KY 40202
 Contract No: 17.70079.00



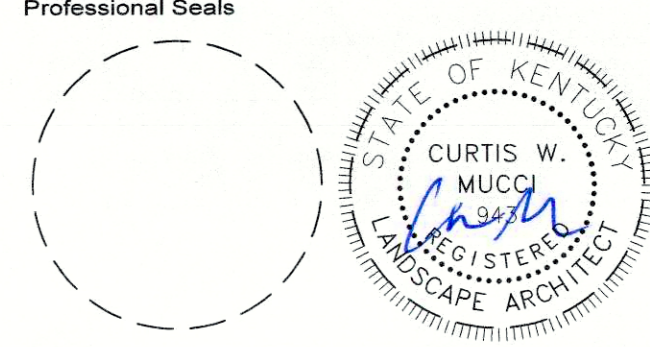
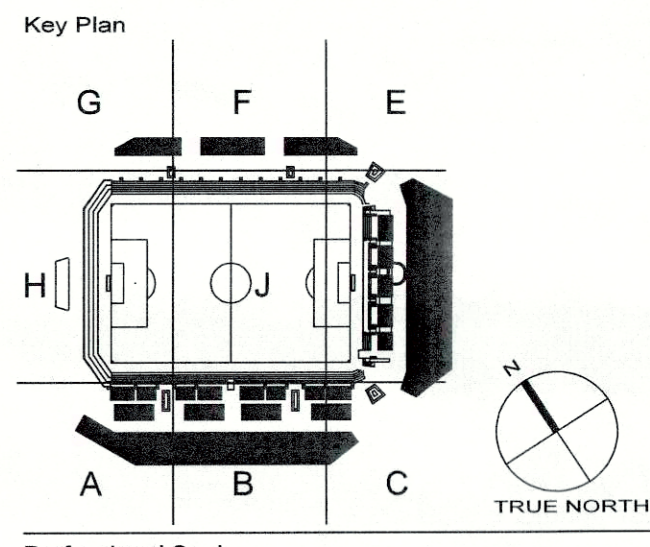
Hellmuth, Obata + Kassabaum, Inc.
 300 West 22nd Street
 Kansas City, MO 64108 USA
 t +1 816 472 3360 f +1 816 472 2100

All reproduction & intellectual property rights reserved © 2018
 In Association with
Mindel Scott
 Civil Engineer
 5151 Jefferson Boulevard
 Louisville, Kentucky 40219
Walter P Moore
 Structural Engineer
 1301 McKinney, Suite 1000
 Houston, Texas 77001
CMTA
 MEP Engineer
 10411 Meeting Street
 Prospect, Kentucky 40059

Ricca
 Food Service Consultant
 5151 Jefferson Boulevard
 Louisville, Kentucky 40219

FSC, Inc
 Code Consultant
 9225 Indian Creek Parkway, Suite 300
 Overland Park, KS 66210

Millennium Sports Technologies, Inc.
 Sports Field Consultant
 1893 West Kettle Avenue
 Littleton, CO 80120

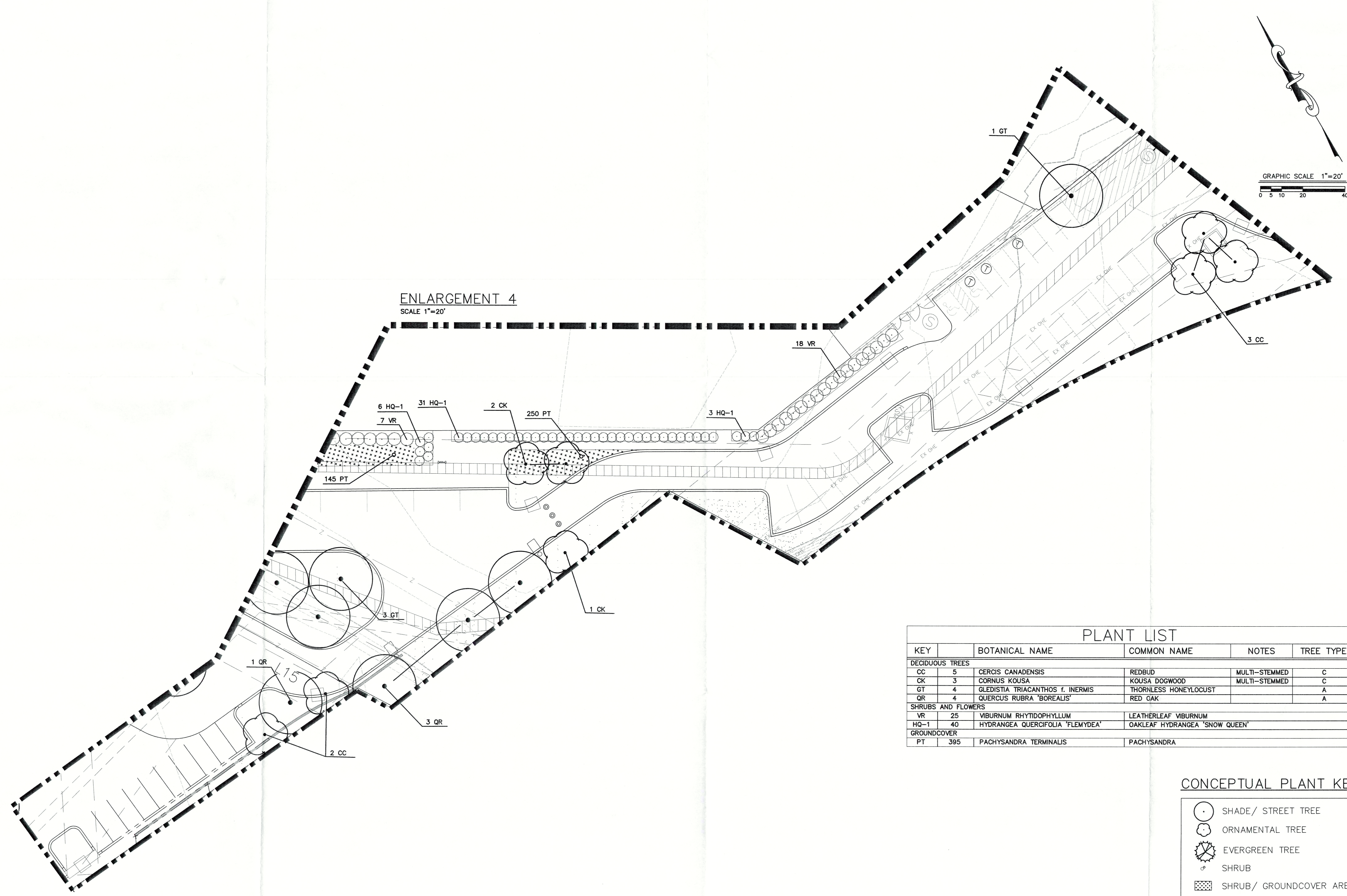


No.	Description	Date

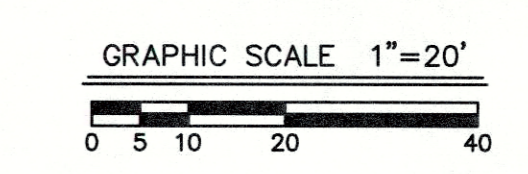
PROJECT NUMBER: 17.70079.00
 PHASE: CONSTRUCTION DOCUMENTS
 SUBMISSION DATE: JUNE 25, 2018

RECEIVED
 SEP 05 2018
 PLANNING & DESIGN SERVICES

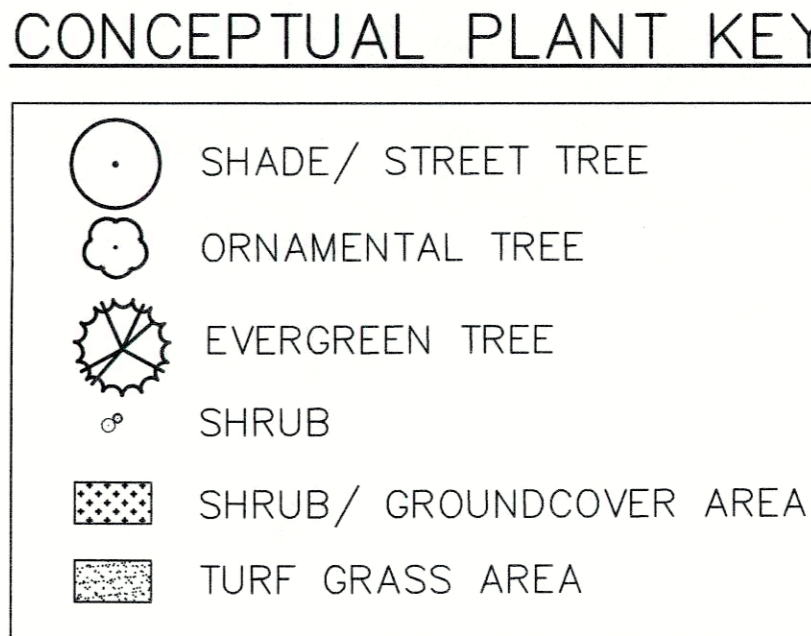
Original drawing is 42 x 30. Do not scale contents of this drawing.
 Sheet Number
L104
 78 LScape 1123



ENLARGEMENT 4
 SCALE 1"=20'



KEY	BOTANICAL NAME	COMMON NAME	NOTES	TREE TYPE
DECIDUOUS TREES				
CC	5	CERCIS CANADENSIS	REDBUD	MULTI-STEMMED C
CK	3	CORNUS KOUSA	KOUSA DOGWOOD	MULTI-STEMMED C
GT	4	GLEDISIA TRIACANTHOS f. INERMIS	THORNLESS HONEYLOCUST	A
QR	4	QUERCUS RUBRA 'BOREALIS'	RED OAK	A
SHRUBS AND FLOWERS				
VR	25	VIBURNUM RHYTIDOPHYLLUM	LEATHERLEAF VIBURNUM	
HQ-1	40	HYDRANGEA QUERCIFOLIA 'FLEM'YDEA'	OAKLEAF HYDRANGEA 'SNOW QUEEN'	
GROUNDCOVER				
PT	395	PACHYSANDRA TERMINALIS	PACHYSANDRA	



CASE # 18LScape1123
 PROJECT # 17ZONE1050
 MSD SUB # 6896



Project
LCFC Stadium
 350 Adams Street
 Louisville, KY 40206
 Prepared For
Louisville City Stadium LLC
 127 South 6th Street
 Louisville, KY 40202
 Contract No: 17.70079.00



Hellmuth, Obata + Kassabaum, Inc.
 300 West 22nd Street
 Kansas City, MO 64108 USA
 t+1 816 472 3360 f+1 816 472 2100

All reproduction & intellectual property rights reserved ©
 2018
 In Association with

Mindel Scott
 Civil Engineer
 5151 Jefferson Boulevard
 Louisville, Kentucky 40219

Walter P Moore
 Structural Engineer
 1301 McKinney, Suite 1000
 Houston, Texas 77701

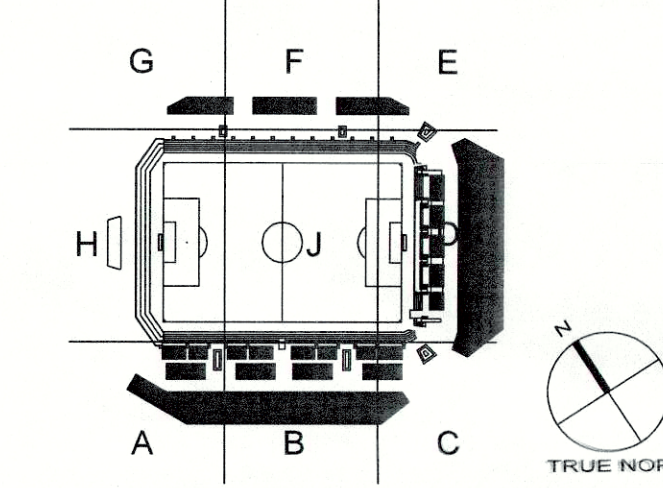
CMTA
 MEP Engineer
 10411 Meeting Street
 Prospect, Kentucky 40059

Ricca
 Food Service Consultant
 5151 Jefferson Boulevard
 Louisville, Kentucky 40219

FSC, Inc
 Code Consultant
 9225 Indian Creek Parkway, Suite 300
 Overland Park, KS 66210

Millennium Sports Technologies, Inc.
 Sports Field Consultant
 1893 West Kettle Avenue
 Littleton, CO 80120

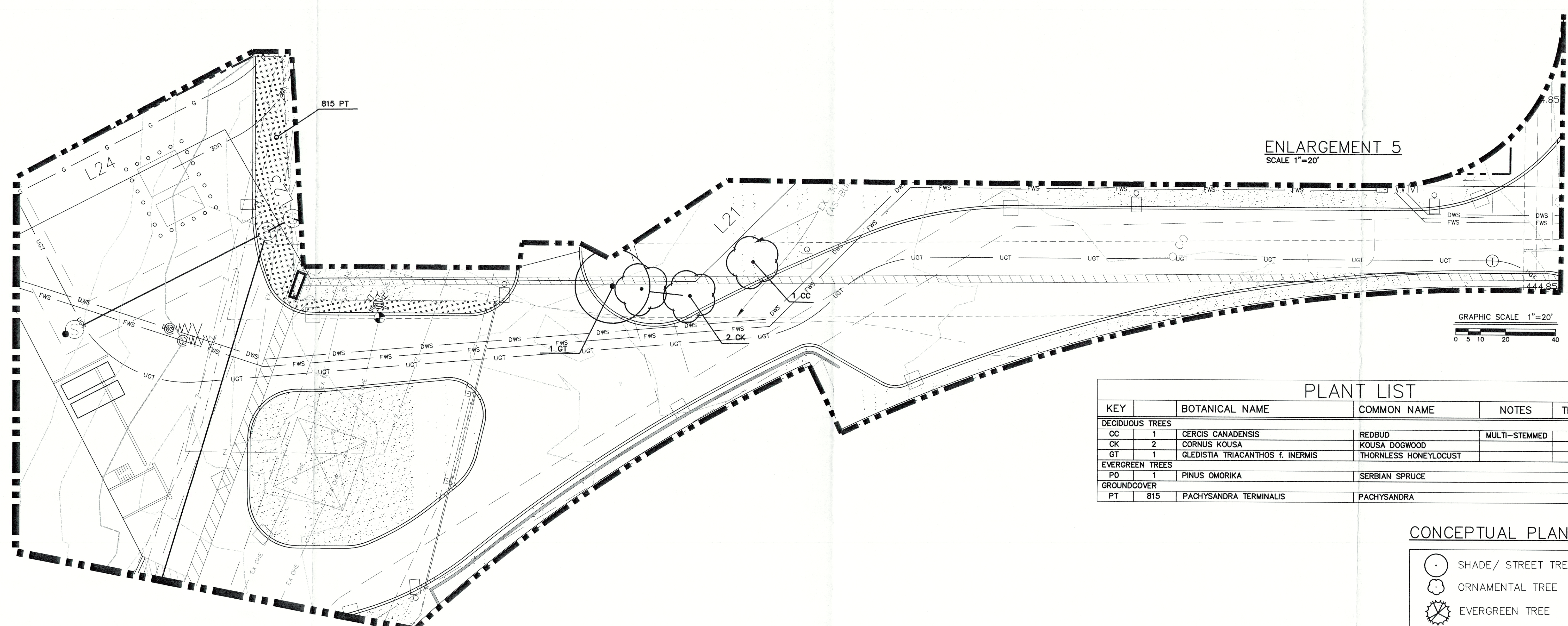
Key Plan



Professional Seals



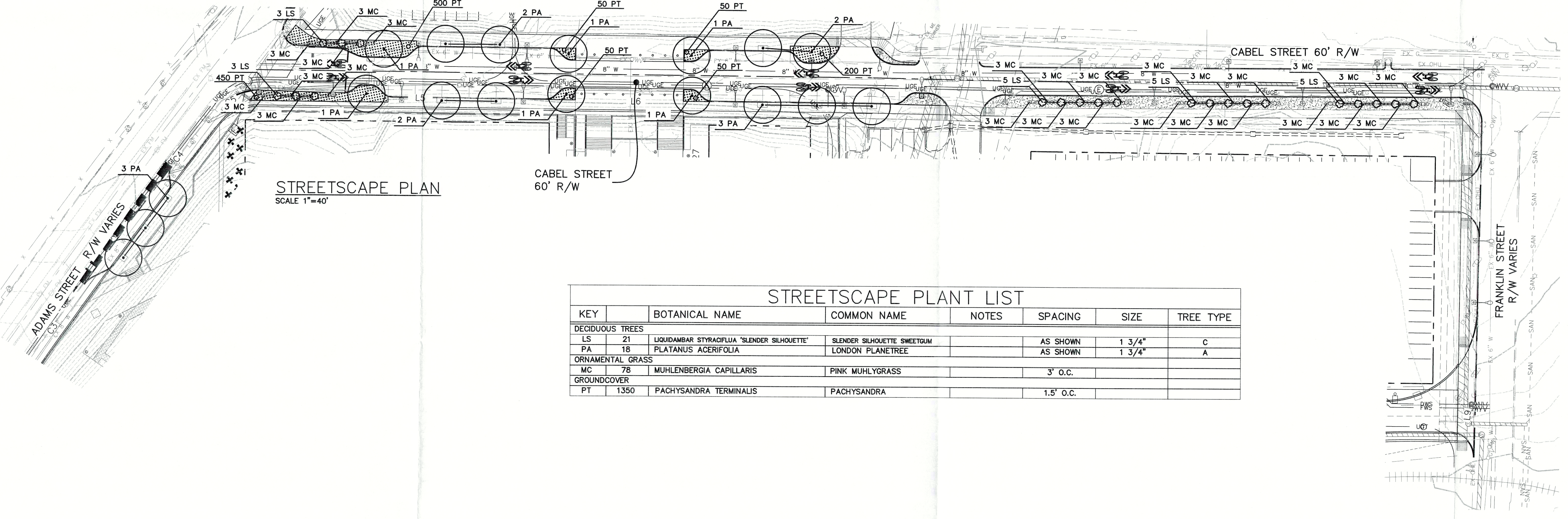
No.	Description	Date



KEY	BOTANICAL NAME	COMMON NAME	NOTES	TREE TYPE
DECIDUOUS TREES				
CC	1	CERCIS CANADENSIS	REDBUD	MULTI-STEMMED
CK	2	CORNUS KOUSA	KOUSA DOGWOOD	C
GT	1	GLEDISTIA TRIACANTHOS f. INERMIS	THORNLESS HONEYLOCUST	A
EVERGREEN TREES				
PO	1	PINUS OMORIKA	SERBIAN SPRUCE	
GROUNDCOVER				
PT	815	PACHYSANDRA TERMINALIS	PACHYSANDRA	

CONCEPTUAL PLANT KEY

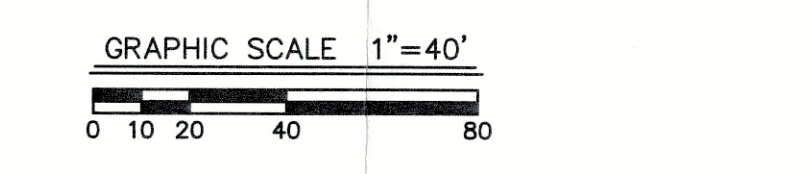
- SHADE/ STREET TREE
- ORNAMENTAL TREE
- EVERGREEN TREE
- SHRUB
- SHRUB/ GROUNDCOVER AREA
- TURF GRASS AREA



KEY	BOTANICAL NAME	COMMON NAME	NOTES	SPACING	SIZE	TREE TYPE
DECIDUOUS TREES						
LS	21	LIQUIDAMBAR STYRACIFLUA 'SLENDER SILHOUETTE'	SLENDER SILHOUETTE SWEETGUM	AS SHOWN	1 3/4"	C
PA	18	PLATANUS ACERIFOLIA	LONDON PLANETREE	AS SHOWN	1 3/4"	A
ORNAMENTAL GRASS						
MC	78	MUHLENBERGIA CAPILLARIS	PINK MUHLYGRASS	3' O.C.		
GROUNDCOVER						
PT	1350	PACHYSANDRA TERMINALIS	PACHYSANDRA	1.5' O.C.		

RECEIVED
 SEP 05 2016
 PLANNING &
 DESIGN SERVICES

PROJECT NUMBER: 17.70079.00
 PHASE: CONSTRUCTION DOCUMENTS
 SUBMISSION DATE: JUNE 25, 2018



CASE# 18LSCAPE1123
 PROJECT # 17ZONE1050
 MSD SUB # 6896

LANDSCAPE PLAN

Original drawing is 42 x 30. Do not scale contents of this drawing.
 Sheet Number

L105

18 LSCAPE 1123



Project
LCFC Stadium
350 Adams Street
Louisville, KY 40206
Prepared For
Louisville City Stadium LLC
127 South 6th Street
Louisville, KY 40202
Contract No: 17.70079.00



Hellmuth Obata + Kassabaum, Inc.
300 West 22nd Street
Kansas City, MO 64108 USA
t+1 816 472 3360 f+1 816 472 2100

All reproduction & intellectual property rights reserved to 2018
In Association with

Mindel Scott
Civil Engineer
5151 Jefferson Boulevard
Louisville, Kentucky 40219

Walter P Moore
Structural Engineer
1301 McKinney, Suite 1000
Houston, Texas 77001

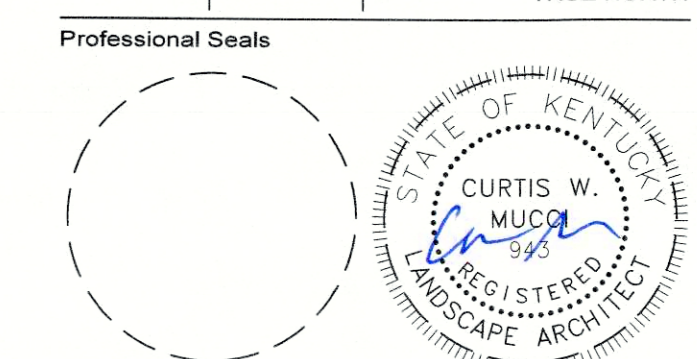
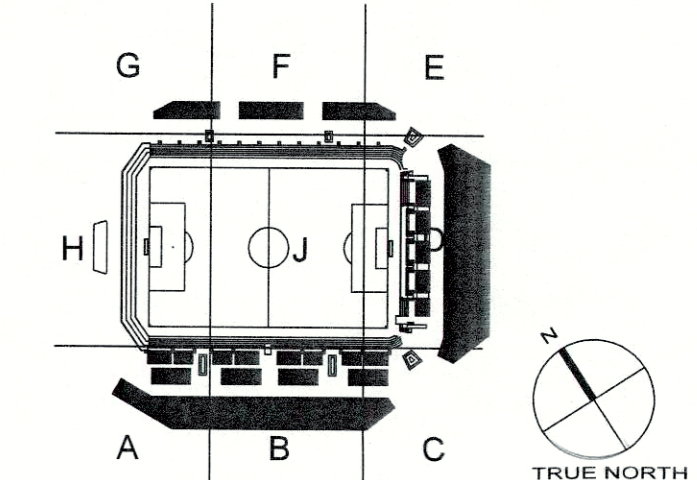
CMTA
MEP Engineer
10411 Meeting Street
Prospect, Kentucky 40059

Ricca
Food Service Consultant
5151 Jefferson Boulevard
Louisville, Kentucky 40219

FSC, Inc
Code Consultant
9225 Indian Creek Parkway, Suite 300
Overland Park, KS 66210

Millennium Sports Technologies, Inc.
Sports Field Consultant
1893 West Kettle Avenue
Littleton, CO 80120

Key Plan



No. Description Date

Table with 3 columns: No., Description, Date. Contains a grid of empty rows for revisions.

PROJECT NUMBER: 17.70079.00
PHASE: CONSTRUCTION DOCUMENTS
SUBMISSION DATE: JUNE 25, 2018

RECEIVED
SEP 05 2018
PLANNING &
DESIGN SERVICES
LANDSCAPE PLAN

Original drawing is 42 x 30. Do not scale contents of this drawing.
Sheet Number

CASE# 18LSCAPE1123
PROJECT # 17ZCN1050
MSD SUB # 6896

L106

18 LScape 1123

LANDSCAPE NOTES:

- 1. THE CALIPER OF ALL DECIDUOUS TREES SHALL BE MEASURED SIX (6) INCHES ABOVE GROUND LEVEL.
2. ALL PLANT MATERIAL TO BE BALLED & BURLAP UNLESS PRIOR APPROVAL IS OBTAINED FROM THE LANDSCAPE ARCHITECT TO SUBSTITUTE CONTAINER MATERIAL.
3. ALL DISTURBED AREAS SHALL BE SEEDED OR SOODED AS INDICATED ON PLAN.
4. DITCHES AND SWALES SHALL BE SEEDED AND/OR SOODED WHERE PAVING IS NOT REQUIRED.
5. SEEDING/SOODOG SHALL BE PERMITTED WITHIN THE TIME PERIODS STIPULATED IN CHAPTER 10.1 OF THE LOUISVILLE METRO LAND DEVELOPMENT CODE, UNLESS PRIOR APPROVAL IS GIVEN BY THE LANDSCAPE ARCHITECT OR OWNER.
6. SEEDING AND SOODOG SHALL NOT BE INSTALLED IN AREAS OF WATER GAS, TELEPHONE AND ELECTRIC INSTALLATION UNTIL AFTER THESE UNDERGROUND UTILITIES ARE INSTALLED, UNLESS OTHERWISE DIRECTED BY THE LANDSCAPE ARCHITECT OR OWNER.
7. THE CONTRACTOR SHALL REPAIR SITE EROSION AFTER TURF HAS BEEN ESTABLISHED AND ACCEPTED BY THE LANDSCAPE ARCHITECT OR OWNER IN ACCORDANCE WITH KENTUCKY HIGHWAY SPECIFICATIONS SECTION 212.08.05.
8. ALL PLANTS MUST BE HEALTHY, FREE OF PESTS AND DISEASES. PLANT SIZES INDICATED IN PLANT LIST ARE INSTALLED SIZES AFTER PRUNING.
9. STANDARDS SET FORTH IN AMERICAN STANDARDS FOR NURSERY STOCK REPRESENT GUIDELINE SPECIFICATIONS ONLY AND CONSTITUTE MINIMUM QUALITY REQUIREMENTS FOR ALL PLANT MATERIAL.
10. THE LANDSCAPE CONTRACTOR SHALL GUARANTEE ALL PLANT MATERIAL FOR A PERIOD OF ONE YEAR, OR THOUGH THE GROWING SEASON, BEGINNING AT THE DATE OF FINAL ACCEPTANCE BY THE OWNER. THE LANDSCAPE CONTRACTOR SHALL PROMPTLY MAKE ALL REPLACEMENTS BEFORE OR AT THE END OF THE GUARANTEE PERIOD (AS PER DIRECTION OF THE OWNER).
11. THE LANDSCAPE CONTRACTOR SHALL BE RESPONSIBLE FOR MAINTAIN ALL PLANTINGS INSTALLED UNDER THIS CONTRACT (INCLUDING, BUT NOT LIMITED TO: WATERING, SPRAYING, MULCHING, FERTILIZING, ETC.) OF PLANTING AREAS AND LAWNS UNTIL THE WORK AREAS ARE ACCEPTED IN TOTAL BY THE OWNER.
12. THE LANDSCAPE CONTRACTOR SHALL BE RESPONSIBLE FOR REPAIRING ANY DAMAGE TO UTILITIES, STRUCTURES, SITE APPURTENANCES, ETC. WHICH OCCUR AS A RESULT OF LANDSCAPE INSTALLATION.
13. ALL LANDSCAPE ISLANDS SHALL BE SEED, SOODED, OR PLANTED WITH DROUGHT TOLERANT GROUNDCOVER OR SHRUBS, AS SPECIFIED BY THE OWNER.
14. A MINIMUM OF TWO (2) INCHES OF SHREDDED BARK MULCH SHALL BE SPREAD AROUND ALL SHRUB BEDS. ALL LANDSCAPE ISLANDS IN THE VEHICLE USE AREA SHALL BE SEED OR PLANTED WITH GROUNDCOVER AT OWNER'S DISCRETION. IRRIGATION DESIGN AND PLAN BY OTHERS.
15. ONLY AMENDED TOPSOIL, FREE FROM LARGE STONE CLAY AND ROOTS WILL BE USED AS BACKFILL FOR ALL LANDSCAPE PLANTINGS.
16. PLANT SUBSTITUTIONS SHALL BE APPROVED BY LANDSCAPE ARCHITECT.
17. REMOVE ALL BURLAP AND OTHER NON-BIODEGRADABLE MATERIALS FROM THE ROOT BALL AFTER THE PLANT IS PLUMB AND CENTERED IN THE HOLE.
18. SEE 10.4.4 PLANT SPACING DISTANCE ADJACENT TO UTILITIES AND STRUCTURES.
19. GRASS OR GROUNDCOVER SHALL BE PLANTED ON ALL PORTIONS OF THE LANDSCAPE BUFFER AREA (LBA) NOT OCCUPIED BY OTHER LANDSCAPE MATERIAL.
20. THE GROUND PLANE OF ALL INTERIOR LANDSCAPE AREAS (L.L.A.) SHALL BE PLANTED USING EITHER SHRUBS, GROUNDCOVER OR TURF.
21. EXISTING TREES AND PLANT MATERIAL ARE BEING USED TO MEET LANDSCAPE CODE REQUIREMENTS; IF ANY TREES OR SCREENING VEGETATION DIE OR ARE REMOVED, THEY WILL BE REPLACED AS PER THE LANDSCAPE CODE REQUIREMENTS. ASSOCIATED PLANT MATERIAL REQUIRED UNDER LAND DEVELOPMENT CODE REGULATIONS. THE PROPERTY OWNER SHALL ALSO BE RESPONSIBLE FOR MAINTAINING THE VERGE AND ASSOCIATED TREES WITHIN THE VERGE UNLESS THE AGENCY HAVING JURISDICTION OVER THAT RESPONSIBILITY.
22. ALL UNHEALTHY OR DEAD PLANT MATERIAL SHALL BE REPLACED WITHIN ONE (1) YEAR, OR BY THE NEXT PLANTING PERIOD, WHICHEVER COMES FIRST, WHILE OTHER DEFECTIVE PLANT MATERIAL SHALL BE REPLACED OR REPAIRED WITHIN THREE (3) MONTHS.
23. ALL PLANT MATERIAL LOCATED WITHIN A UTILITY EASEMENT THAT IS DAMAGED OR REMOVED DUE TO WORK REQUIRED BY THE UTILITY COMPANY SHALL BE IMMEDIATELY REPLACED BY THE OWNER IN ACCORDANCE WITH LAND DEVELOPMENT CODE CHAPTER 10.2 AND 10.4.9. SERVICE STRUCTURES INCLUDE BUT ARE NOT LIMITED TO: PROPANE TANKS, DUMPSTERS, HVAC UNITS, ELECTRIC TRANSFORMERS, TELLER BOXES, ETC.
24. LIGHT POLES, SIDEWALKS, BENCHES, ETC. SHALL NOT OCCUPY MORE THAN TWENTY-FIVE (25%) PERCENT OF ANY INTERIOR LANDSCAPE AREA (L.L.A.) OR REDUCE THE WIDTH OF ANY PLANTED AREA TO LESS THAN FOUR (4) FEET. CONTRACTOR SHALL COORDINATE LIGHT POLES WITH LANDSCAPE PLAN PROPOSED TREE PLANTING TO AVOID CONFLICT.
25. IRRIGATION WILL BE PROVIDED AS REQUIRED WHERE BERMS OR EARTHEN MOUNDS ARE PROPOSED. THIS IRRIGATION SYSTEM SHALL BE DESIGNED TO PROVIDE ADEQUATE WATERING OF THE PROPOSED PLANT MATERIAL AND LAWN AREAS. THE SYSTEM SHALL CONSIST OF SEVERAL WATERING ZONES CONTROLLED BY A CENTRAL TANK WITH EITHER POP-UP AND ROTATING IRRIGATION HEADS OR A DRIP LINE SYSTEM. THE PROPOSED SYSTEM SHALL BE INSTALLED PRIOR TO PLANTING.
26. PARKWAY SCENIC CORRIDOR AND GENE SHOYER FREEWAY PLANTING MUST BE INSTALLED WITHIN SIX (6) MONTHS OR NEXT AVAILABLE PLANTING SEASON PER PDS STAFF, FROM THE ISSUANCE OF THE SITE DISTURBANCE/CLEARING AND GRADING PERMIT.
27. AN AUTHORIZED INSPECTOR SHALL HAVE THE RIGHT TO ENTER ONTO ANY PROPERTY TO INSPECT THE HEALTH AND GENERAL CONDITION OF PLANT MATERIAL THAT IS LOCATED IN THE RIGHT OF WAY, PART OF AN APPROVED DEVELOPMENT/LANDSCAPE PLAN, OR REPORTED AS A PUBLIC HAZARD.
28. SEED ALL DISTURBED AREAS AS NOTED BELOW.
29. LANDSCAPE BEDS SHALL BE IRRIGATED BY A DRIP IRRIGATION SYSTEM. LAWN AREAS OUTSIDE TO BE IRRIGATED BY EITHER POP-UP SPRAYERS OR ROTARY SPRAYERS OR A COMBINATION OF BOTH.

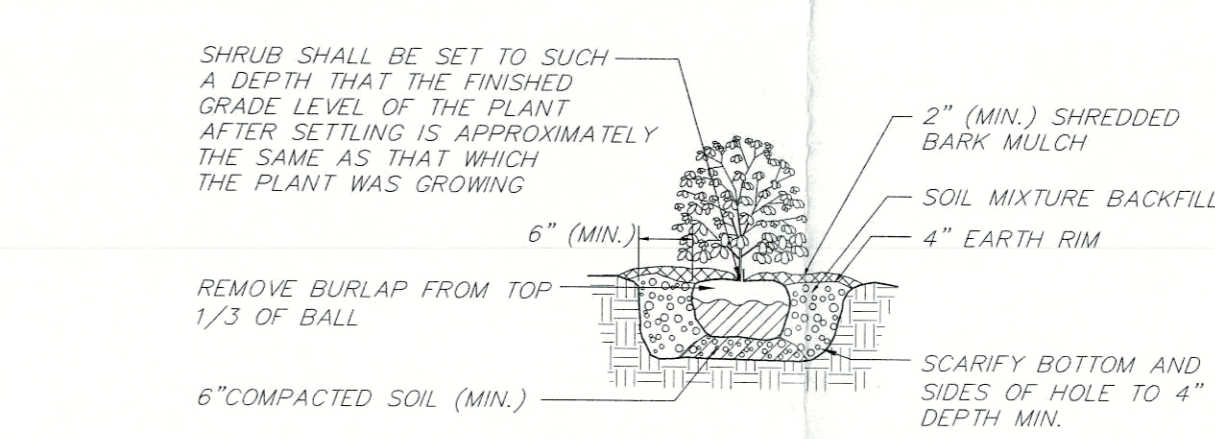
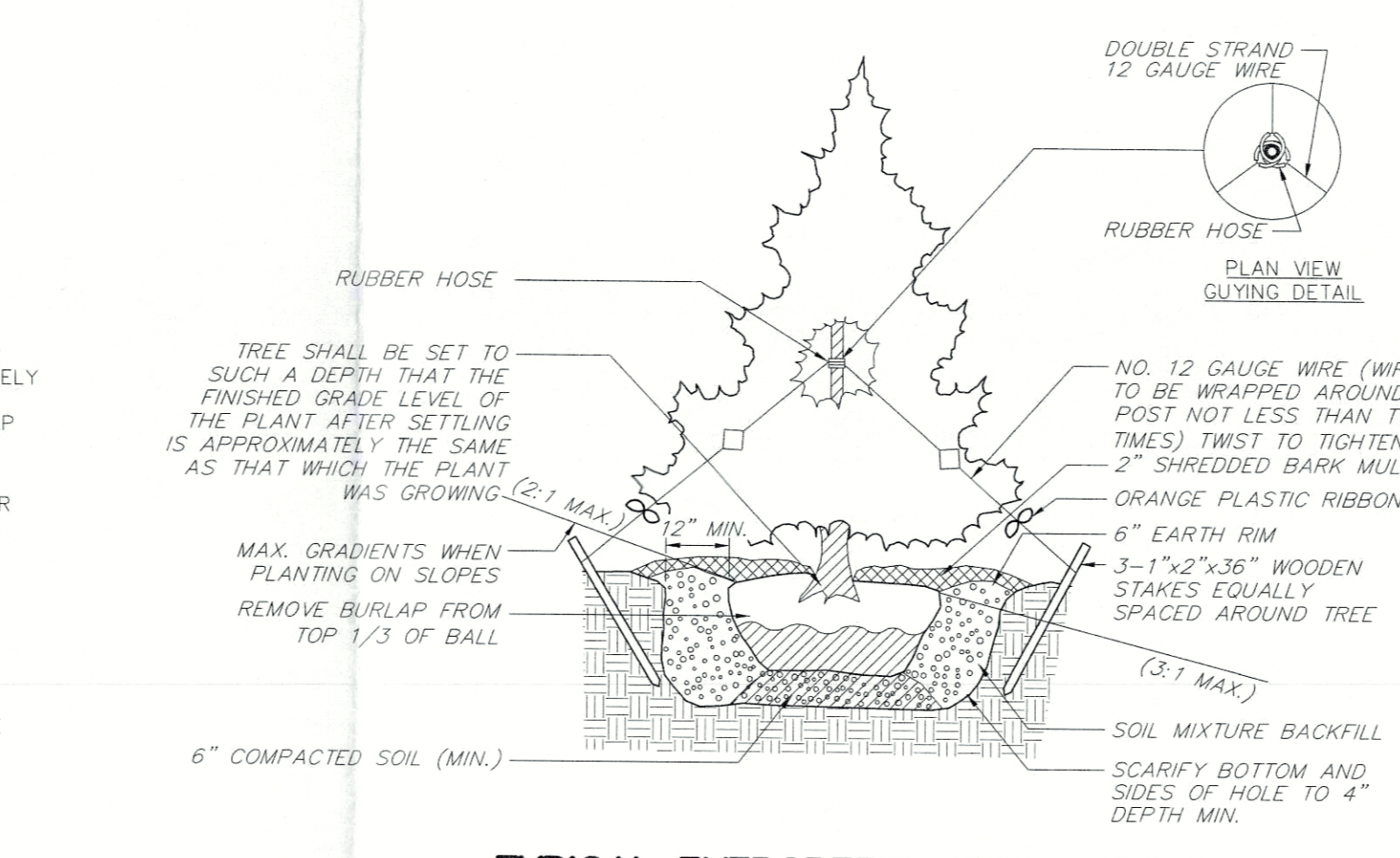
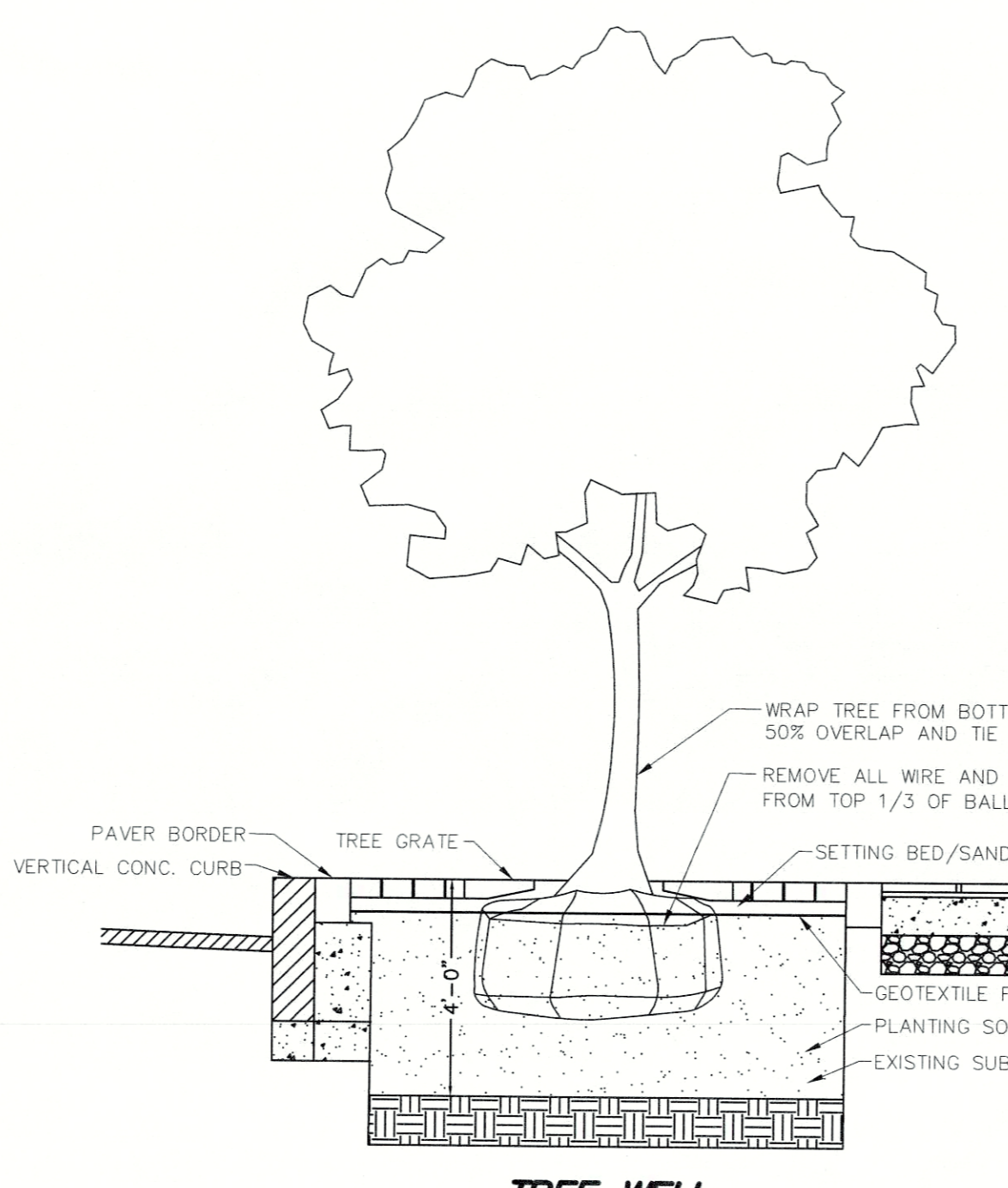


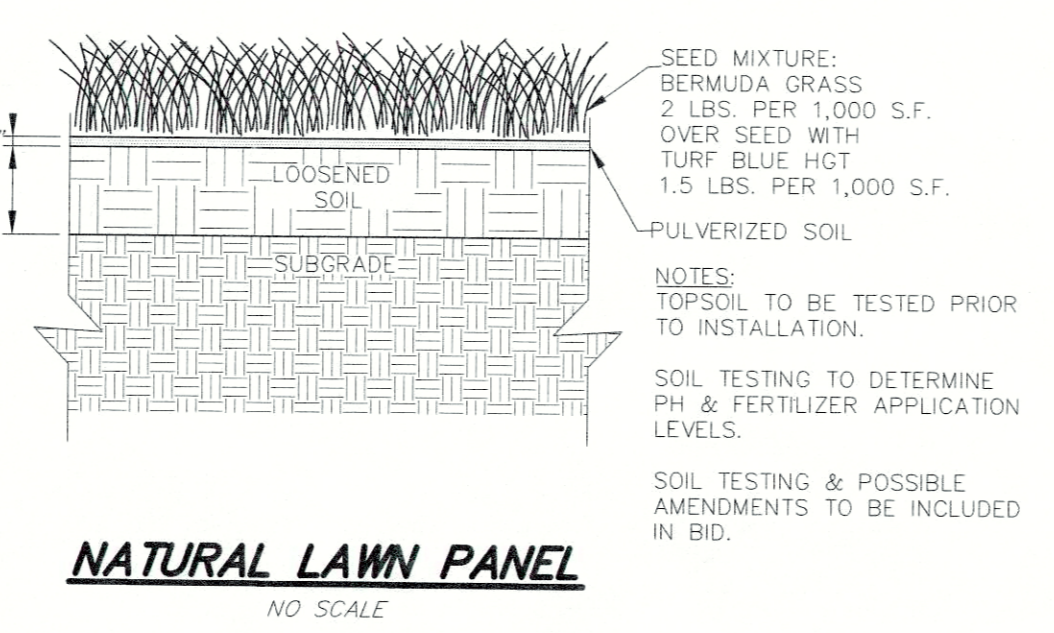
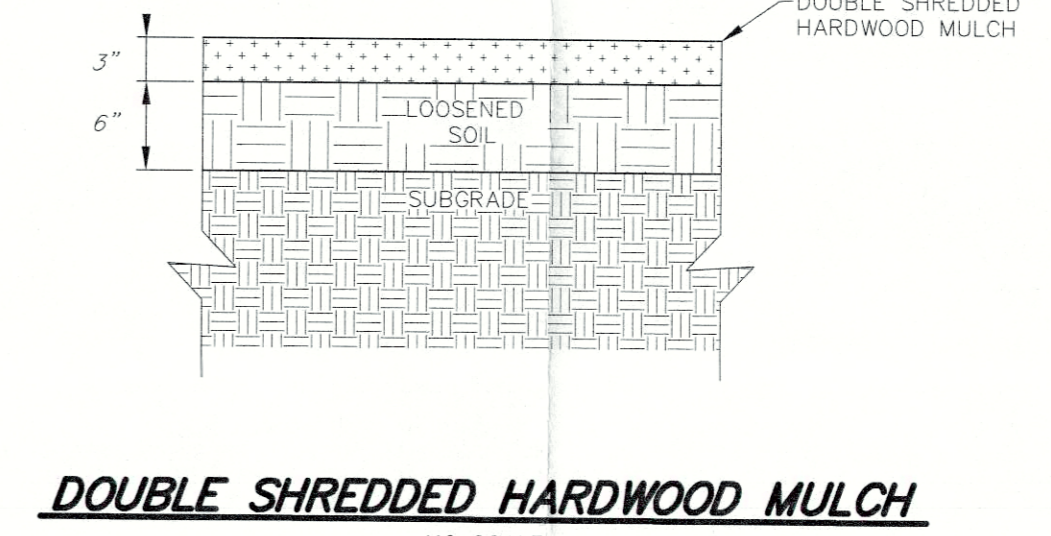
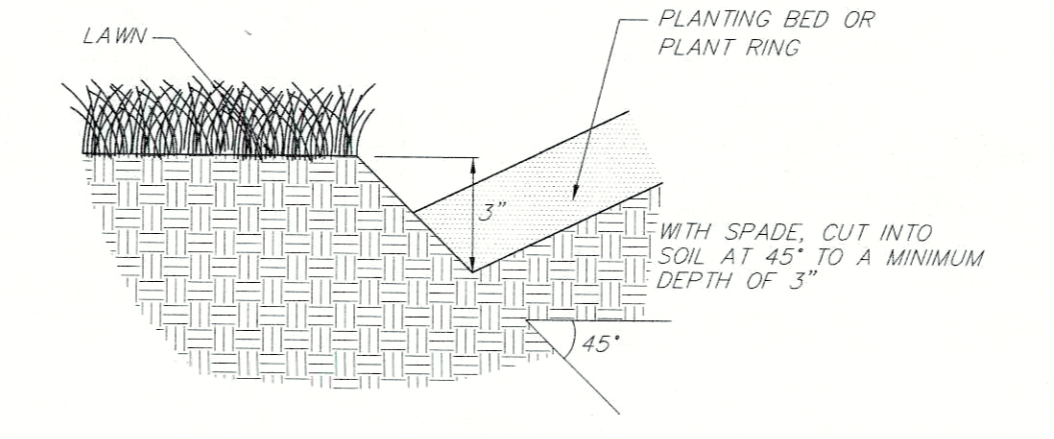
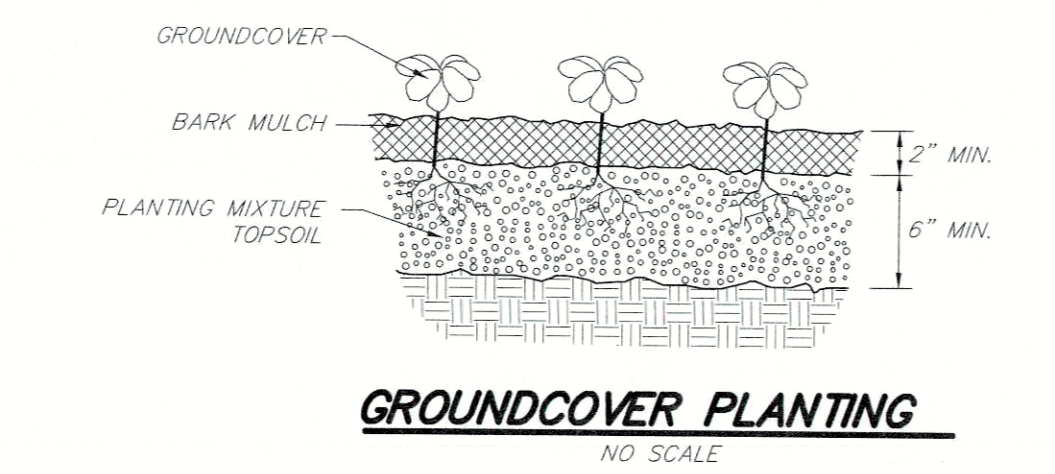
Table with 4 columns: Area, Fertilizer, Seed, Mulch. Rows include 'Within Street Right-of-Way' and 'Ditches & Swales'.

GENERAL TREE PRESERVATION/PROTECTION NOTES:

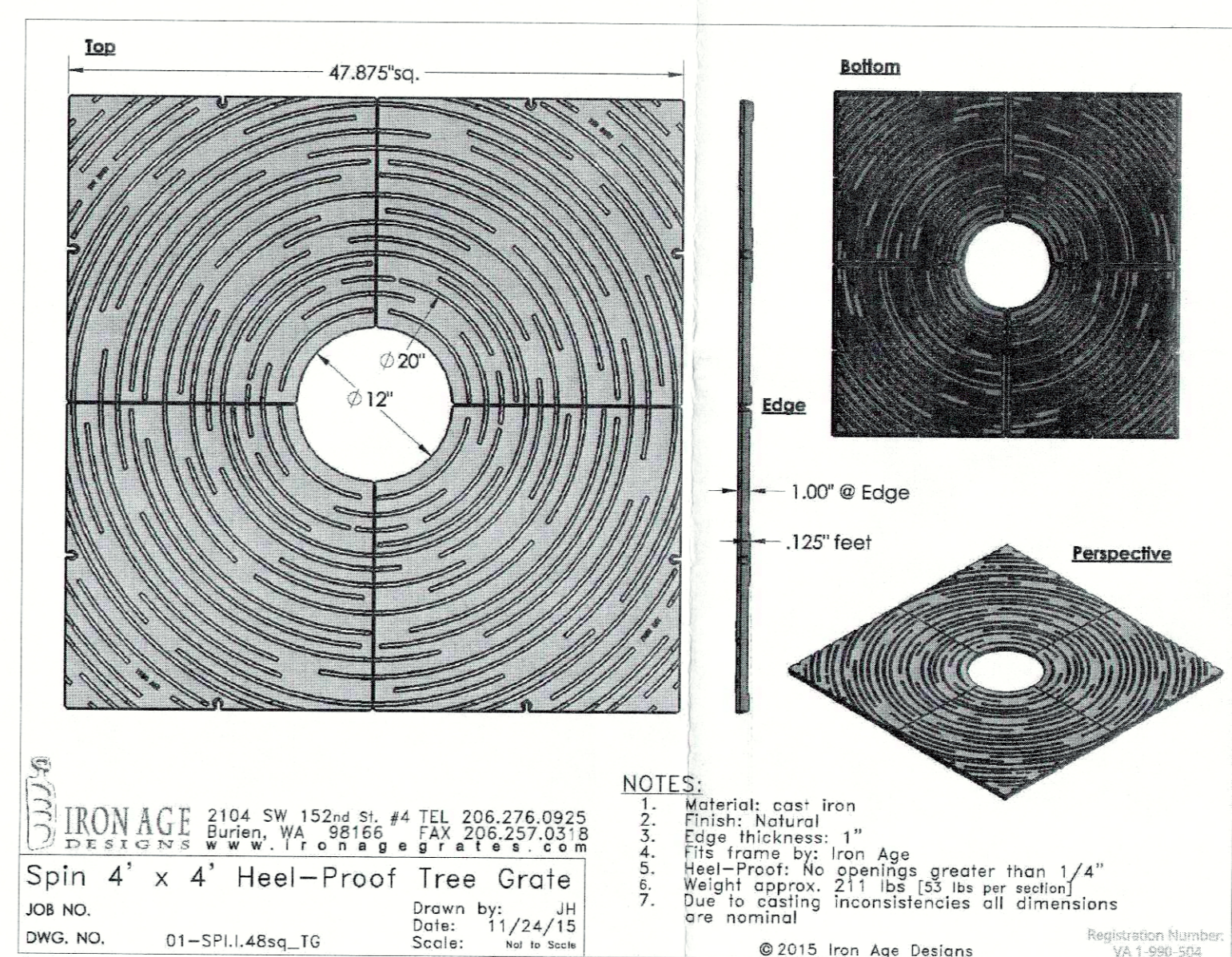
- 1. CONSTRUCTION FENCING SHALL BE ERRECTED WHEN OFF-SITE TREES OR TREE CANOPY EXISTS WITHIN THREE (3) FEET OF A COMMON PROPERTY LINE. FENCING SHALL BE IN PLACE PRIOR TO ANY GRADING OR CONSTRUCTION TO PROTECT THE EXISTING ROOT SYSTEMS FROM COMPACTION. THE FENCING SHALL ENCLOSE THE ENTIRE AREA BENEATH THE TREE CANOPY AND SHALL REMAIN IN PLACE UNTIL ALL CONSTRUCTION IS COMPLETED. NO PARKING, MATERIAL STORAGE OR CONSTRUCTION ACTIVITIES ARE PERMITTED WITHIN THE PROTECTED AREA.
2. PRIOR TO SITE DISTURBANCE OR CONSTRUCTION ACTIVITIES A SITE INSPECTION BY PDS STAFF OR DESIGNEE SHALL BE SCHEDULED TO CONFIRM AND VERIFY THE TREE PRESERVATION/PROTECTION FENCING AND SIGNAGE IS INSTALLED AND CORRECTLY PLACED. TO SCHEDULE AN INSPECTION APPOINTMENT CALL PDS CUSTOMER SERVICE 502-574-8230.
3. THE CONTRACTOR SHALL POST SIGNAGE ON THE TREE PRESERVATION/PROTECTION AND CONSTRUCTION FENCING IDENTIFYING THE ENCLOSED AREA AS TREE PRESERVATION/PROTECTION AREA. THE SIGNS SHALL INCLUDE THE FOLLOWING TEXT: "STAY OUT TREE PRESERVATION/PROTECTION AREA. NO EQUIPMENT, MATERIALS OR VEHICLES SHALL BE STORED OR PLACED WITHIN THE AREA ENCLOSED BY THIS TREE PRESERVATION/PROTECTION FENCE. THIS FENCE MAY NOT BE REMOVED WITHOUT THE APPROVAL OF THE METRO LOUISVILLE PLANNING COMMISSION. FAILURE TO COMPLY WILL RESULT IN FINES AND TREE MITIGATION. REPORT NON-COMPLIANCE TO 502-574-8230.
4. THE TREE PRESERVATION/PROTECTION AREA SIGNAGE SHALL BE POSTED EVERY FIFTY (50) FEET ALONG THE TREE PRESERVATION FENCE. THE SIGNS SHALL BE A MINIMUM SIZE OF 8" X 10" AND WEATHER RESISTANT. IF THE SIGNS ARE DAMAGED OR FADE THEY SHALL BE REPLACED WITHIN TEN (10) WORKING DAYS OR TWO (2) WEEKS.
5. DURING ALL CONSTRUCTION ACTIVITY (INCLUDING CLEARING, GRADING, BUILDING CONSTRUCTION, AND V.I.A. CONSTRUCTION) A COPY OF THE APPROVED TREE PRESERVATION PLAN SHALL BE ON-SITE.
6. AN AUTHORIZED INSPECTOR SHALL HAVE THE RIGHT TO ENTER ONTO ANY PROPERTY TO INSPECT THE HEALTH AND GENERAL CONDITION OF PLANT MATERIAL THAT IS LOCATED IN THE RIGHT OF WAY, PART OF AN APPROVED DEVELOPMENT/LANDSCAPE PLAN, OR REPORTED AS A PUBLIC HAZARD.

TEMPORARY TREE PROTECTION AREA (TTPA) NOTES:

- 1. TEMPORARY TREE PROTECTION AREA (TTPA) IDENTIFIED ON THIS PLAN REPRESENT PORTIONS OF THE SITE THE DEVELOPER HAS DESIGNATED TO BE LEFT UNDISTURBED DURING THE DEVELOPMENT OF ROADWAYS, UTILITIES AND SIMILAR INFRASTRUCTURE. THESE ARE NOT PERMANENT PRESERVATION AREAS. TREES IN THESE AREAS MAY BE REMOVED DURING CONSTRUCTION OF HOMES OR BUILDINGS ON THIS SITE.
2. TREE PROTECTION FENCING SHALL BE ERRECTED ADJACENT TO ALL TTPA'S PRIOR TO SITE DISTURBANCE APPROVAL (CLEARING AND GRADING PERMIT) TO PROTECT THE EXISTING TREE STANDS AND THEIR ROOT SYSTEMS. THE FENCING SHALL BE LOCATED AT LEAST THREE (3) FEET FROM THE OUTSIDE EDGE OF THE TREE CANOPY AND SHALL REMAIN IN PLACE UNTIL ALL CONSTRUCTION IS COMPLETED. WHEN TREES MUST BE REMOVED IN A TTPA, THE FENCE SHALL BE RELOCATED TO PROTECT ALL REMAINING TREES WITHIN THAT TTPA. WHEN A TREE MASS CONTAINS WPA'S, TCCA'S, OR TTPA'S FENCING SHALL ONLY BE REQUIRED AT THE OUTER MOST PERIMETER OF THAT TREE MASS.
3. DIMENSION LINES HAVE BEEN USED ON THIS PLAN TO ESTABLISH THE GENERAL LOCATION OF TTPA'S AND REPRESENT MINIMUM DISTANCES. THE FINAL BOUNDARY FOR EACH TTPA SHALL BE ESTABLISHED IN THE FIELD TO INCLUDE CANOPY AREAS OF ALL TREES AT OR WITHIN THE DIMENSION LINE.
4. WHERE, DUE TO THE NATURE OF CONSTRUCTION PLANS, THE TREE PROTECTION FENCING IS NOT LOCATED THREE (3) FEET FROM THE OUTSIDE EDGE OF TREE CANOPY, THE TREE SHALL NOT BE CONSIDERED PRESERVED. HOWEVER, THIS DOES NOT PROHIBIT EFFORTS TO SAVE THE TREE.
5. NO PARKING, MATERIAL STORAGE OR CONSTRUCTION ACTIVITIES ARE PERMITTED WITHIN TTPA'S BEYOND THAT ALLOWED FOR PRELIMINARY SITE INVESTIGATION WORK.
6. CLEARING NECESSARY TO PROVIDE ACCESS FOR SURVEY WORK, ROCK SOUNDINGS OR OTHER USUAL AND CUSTOMARY SITE INVESTIGATIONS SHALL BE PERMITTED PRIOR TO SITE DISTURBANCE APPROVAL. PRELIMINARY SITE INVESTIGATIONS SHALL BE CAREFULLY PLANNED TO MINIMIZE THE AMOUNT OF CLEARING REQUIRED. CLEARING SHOULD FOLLOW PROPOSED ROADWAY CENTERLINES AND SHOULD NOT RESULT IN A CLEAR ACCESS WAY OF MORE THAN TWENTY (20) FEET IN WIDTH. CLEARED ACCESS WAYS BEYOND PROPOSED ROADWAYS TO ACCESS INDIVIDUAL LOTS SHALL NOT EXCEED TWELVE (12) FEET IN WIDTH OR BREAST HEIGHT (DBH) SHALL BE REMOVED WITHOUT PRIOR APPROVAL BY PLANNING & DESIGN SERVICES STAFF.



SOIL AMENDMENTS TO BE DETERMINED BY SOIL TESTING



NOTES: 1. Material: cast iron
2. Finish: Natural
3. Edge thickness: 1"
4. The grate is non-age
5. Heel-Proof: No openings greater than 1/4"
6. Depth above: 2 1/2" (all as per section)
7. Due to casting inconsistencies all dimensions are nominal.
IRON AGE 2104 SW 152nd St. #4 TEL 206.276.0925
Burien, WA 98148 FAX 206.227.0318
© 2015 Iron Age Designs

HEEL-PROOF TREE GRATE

RECEIVED
SEP 05 2018
PLANNING &
DESIGN SERVICES