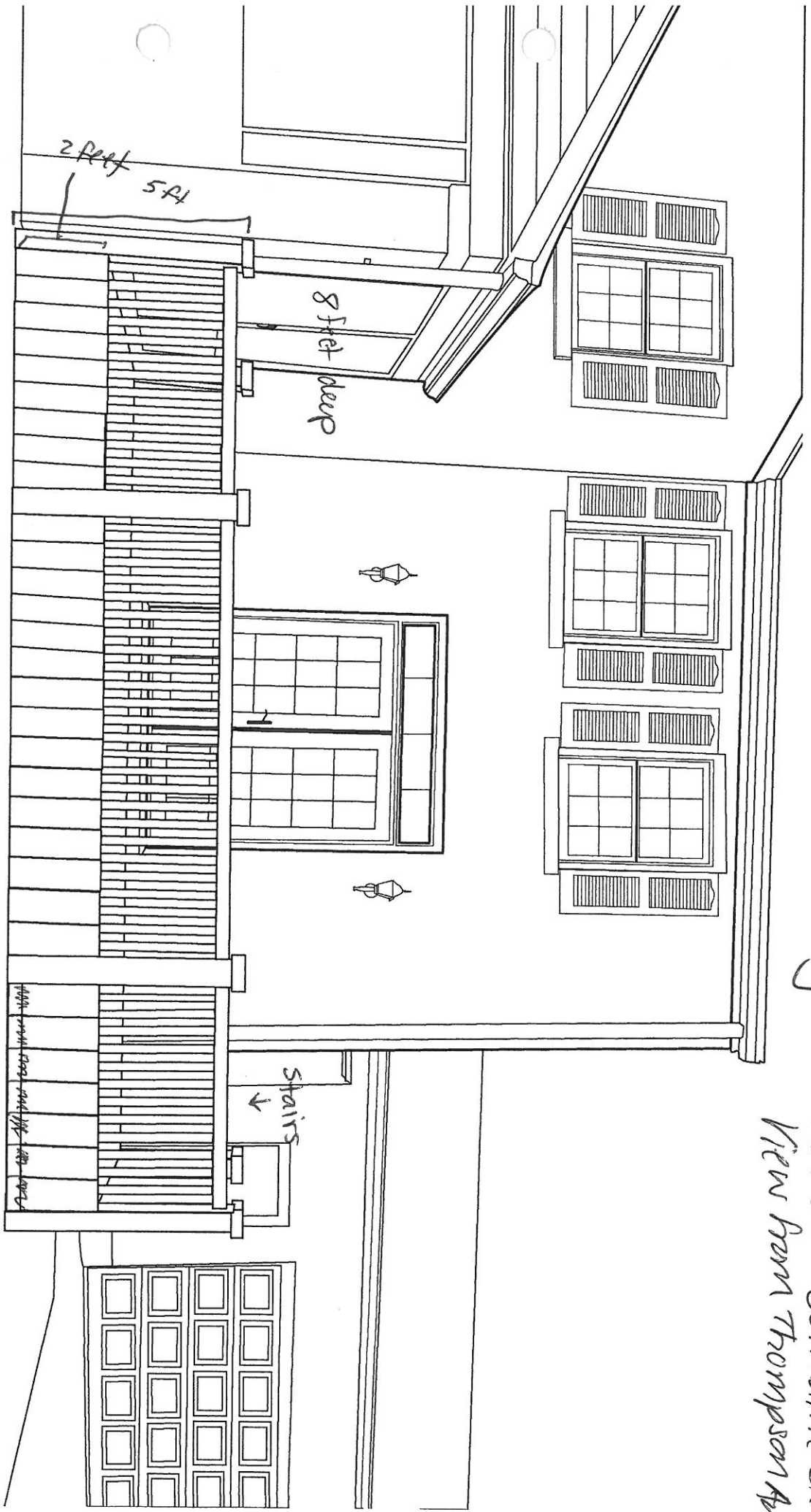


Elevation Drawing

3600 S. Bernmaine Ct.
View from Thompson Ave



Materials
Painted wood

- * stairs will be on garage side connecting to existing concrete slab
- * there will be one wood step down to deck from double doors
- * The underside of deck will be closed off by wood planks - painted to match deck

RECEIVED

MAY 12 2014
PLANNING &
DESIGN SERVICES