

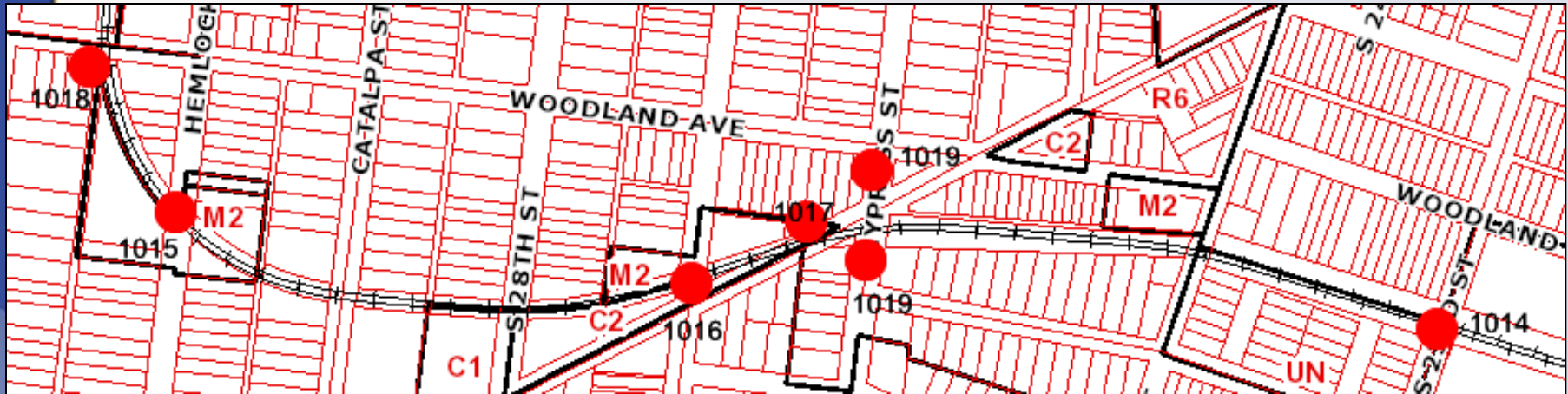
# 14 STREETS 1014 to 1019

## Wilson Quiet Zone Street Closures



Planning/Zoning, Land Design & Development  
August 30, 2016

# Request(s)



# Request(s)

- 14STREETS1014: A closure of 716 SF of R/W at the intersection of Magnolia Avenue and S. 23<sup>rd</sup> Street, and South of the rail corridor.
- 14STREETS1015: A closure of 3,064 SF of R/W crossing the rail corridor along Hemlock Street.
- 14STREETS1016: A closure of 2,704 SF of R/W crossing the rail corridor at the intersection of Olive Street and Wilson Avenue.

# Request(s)

- 14STREETS1017: A closure of 193 SF of R/W of a 14' alley terminating at Wilson Avenue and North of the rail corridor.
- 14STREETS1018: A closure of 795 SF of R/W of an 18' alley terminating at Woodland Avenue and West of the rail corridor.
- 14STREETS1019: A closure of 4,735 SF of R/W at the intersection of Cypress Street and Wilson Avenue. A portion of Cypress will be closed from Woodland Avenue to Wilson Avenue, as well as a portion of Cypress Avenue South of Wilson Avenue crossing the rail corridor.

# Case Summary / Background

- The proposed road closures are part of a railroad corridor safety improvement project sponsored by the Kentucky Transportation Cabinet, Norfolk Southern Railroad and Louisville Metro Council Districts 1 & 3.
- The planned improvements include the addition of warning devices on 7 at-grade railroad crossings and the closure of 6 at-grade crossings to vehicular traffic.
- Closure of these at-grade rail crossings will result in a reduced risk and ultimately the establishment of a Quiet Zone for the entire corridor.

# Case Summary / Background

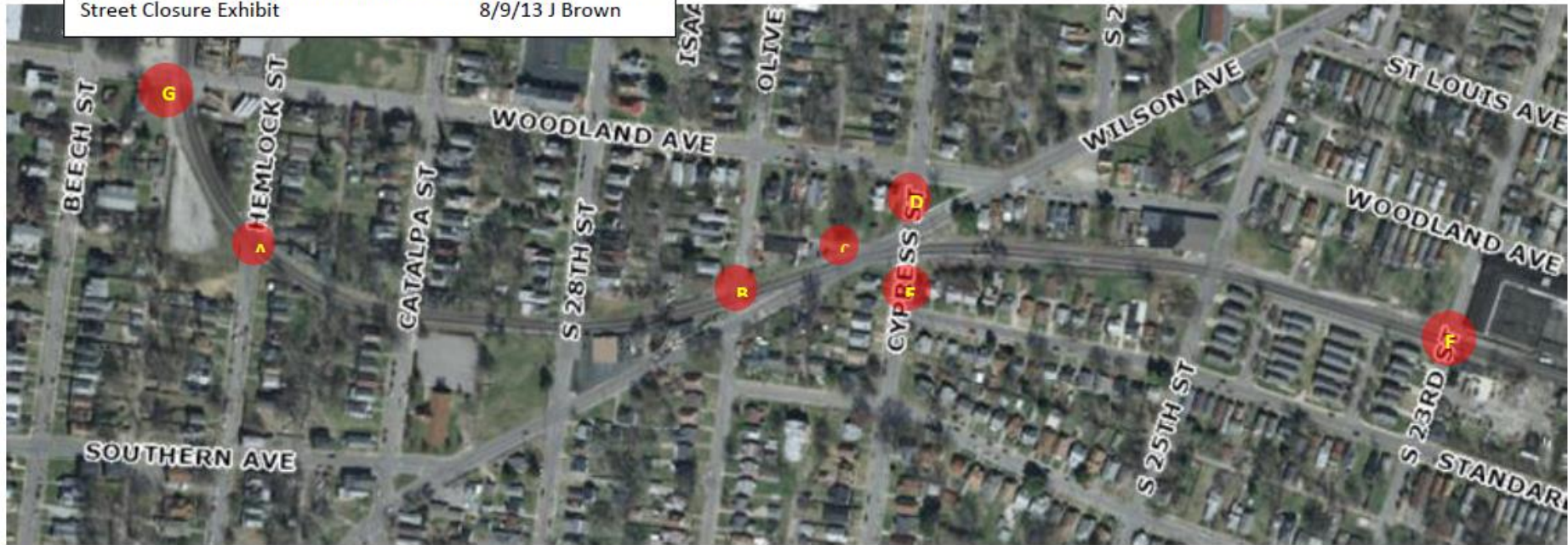
- Improvements:
  - No outlet signs
  - Curbs and bump-outs
  - Guardrails
  - Removal of pavement to be replaced with fill and seed
  - Sidewalks
  - Turnarounds
- Crossing arms to be installed at Wilson Avenue and Woodland Avenue, as well as a number of additional through-streets.



## Wilson/Cypress Corridor Railroad Safety Improvements

Street Closure Exhibit

8/9/13 J Brown



The following at-grade railroad crossings are being proposed for closure to vehicular traffic:

- A. Hemlock St, between Woodland Ave and Southern Ave
- B. Olive St, between Woodland Ave and Wilson Ave
- C. Alley parallel to RR tracks at Wilson, between Wilson Ave and Olive St
- D. Cypress St, between Woodland Ave and Wilson Ave
- E. Cypress St, between Wilson Ave and Standard Ave
- F. S 23<sup>rd</sup> St, between Woodland Ave and Standard Ave
- G. Alley at Woodland & railroad crossing

# PC Recommendation

- Public Hearing was held on 8/4/2016
  - No one spoke in opposition.
- The Commission made sufficient findings that the proposal complies with the Comprehensive Plan-Cornerstone 2020
- The Commission recommended approval of the closures by a vote of 7-0 (7 members voted)