



# Landmarks Certificate of Appropriateness & Overlay District Permit

Louisville Metro Planning & Design Services

Case No.: 19-COA-0137 Intake Staff: [Signature]

Date: 11/15/19 Fee: No Fee

### Instructions:

For detailed definitions of *Certificate of Appropriateness* and *Overlay District Permit*, please see page 4 of this application.

### Project Information:

Certificate of Appropriateness:  Butchertown  Clifton  Cherokee Triangle  Individual Landmark  
 Limerick  Old Louisville  Parkland Business  West Main Street

Overlay Permit:  Bardstown/Baxter Ave Overlay (BRO)  Downtown Development Review Overlay (DDRO)  
 Nulu Review Overlay District (NROD)

Project Name: Louisville Collegiate School Window Replacement-Lower School Building

Project Address / Parcel ID: 2427 Glenmary Ave/075H00170000

Total Acres: 6.4215

Project Cost (exterior only): \$578,142 PVA Assessed Value: \$21,090,000

Existing Sq Ft: 74,780 New Construction Sq Ft: 0 Height (Ft): 55 Stories: 3

Project Description (use additional sheets if needed):

Work consists of replacing all windows on site in-kind with Andersen E-Series wood clad windows. No other exterior or interior work will be completed.

RECEIVED  
NOV 18 2019  
PLANNING &  
DESIGN SERVICES

**Contact information:**

Owner:  Check if primary contact

Name: Mike Basham  
Company: Louisville Collegiate School

Address: 2427 Glenmary Avenue  
City: Louisville State: KY Zip: 40204

Primary Phone: 502.479.0361

Alternate Phone: \_\_\_\_\_

Email: mbasham@louisvillecollegiate.org

Owner Signature (required): *Mike Basham*

Applicant:  Check if primary contact

Name: Vadim Kaplan  
Company: Studio A Architecture

Address: 2330 Frankfort Ave  
City: Louisville State: KY Zip: 40206

Primary Phone: (502)589-8007

Alternate Phone: \_\_\_\_\_

Email: Vadim@studioaarch.com

Attorney:  Check if primary contact

Name: N/A  
Company: \_\_\_\_\_

Address: \_\_\_\_\_  
City: \_\_\_\_\_ State: \_\_\_\_\_ Zip: \_\_\_\_\_

Primary Phone: \_\_\_\_\_

Alternate Phone: \_\_\_\_\_

Email: \_\_\_\_\_

Plan prepared by:  Check if primary contact

Name: Vadim Kaplan  
Company: Studio A Architecture

Address: 2330 Frankfort Ave  
City: Louisville State: KY Zip: 40206

Primary Phone: (502)589-8007

Alternate Phone: \_\_\_\_\_

Email: Vadim@studioaarch.com

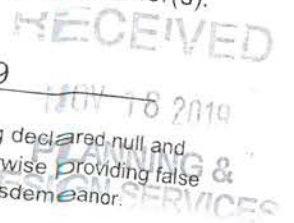
**Certification Statement:** A certification statement **must be submitted** with any application in which the owner(s) of the subject property is (are) a limited liability company, corporation, partnership, association, trustee, etc., or if someone other than the owner(s) of record sign(s) the application.

I, Mike Basham, in my capacity as Director of Facilities, hereby certify that Louisville Collegiate School is (are) the owner(s) of the property which is the subject of this application and that I am authorized to sign this application on behalf of the owner(s).

Signature: *Mike Basham*

Date: 11/14/2019

I understand that knowingly providing false information on this application may result in any action taken hereon being declared null and void. I further understand that pursuant to KRS 523.010, et seq. knowingly making a material false statement, or otherwise providing false information with the intent to mislead a public servant in the performance of his/her duty is punishable as a Class B misdemeanor.





**STUDIO A**  
architecture

2330 frankfort ave. louisville, ky 40206  
phone: (502) 589-8007 web: www.studioaarch.com

# T R A N S M I T T A L

**DATE:** November 15, 2019

**TO:** Louisville Metro Planning and Design

ATTN: Savannah Darr  
444 S 5th St  
Suite 300  
Louisville, KY 40202

**PROJECT NAME** Louisville Collegiate School Window Replacement-Lower School/Middle School

**PROJECT #** 19-ST-03

**TRANSMITTED BY:** Chris Mannella

**COPY:** Vadim Kaplan

COPIES	DATE	DESCRIPTION	ACTION
1	11/15/2019	Landmarks COA Application	
31	11/15/2019	Photos of Existing Elevations	
1	11/15/2019	Window Manufacturer's Spec Information Packet	
1	11/15/2019	Land Development Report	

**ACTION**

**RV:** Reviewed, **RJ:** Rejected, **RR:** Revised & Resubmit, **RC:** Reviewed with comments as noted,

**COMMENTS:**

If there are any questions or concerns, please give us a call at (502) 589-8007

Please note that a set of mailing labels are provided outside of this transmittal.

Thank you,

Chris Mannella  
Studio A Architecture  
2330 Frankfort Ave  
Louisville, KY 40206  
1-502-589-8007  
e-mail: Chris@studioaarch.com

RECEIVED  
NOV 18 2019  
PLANNING &  
DESIGN SERVICES

19 COA 0137

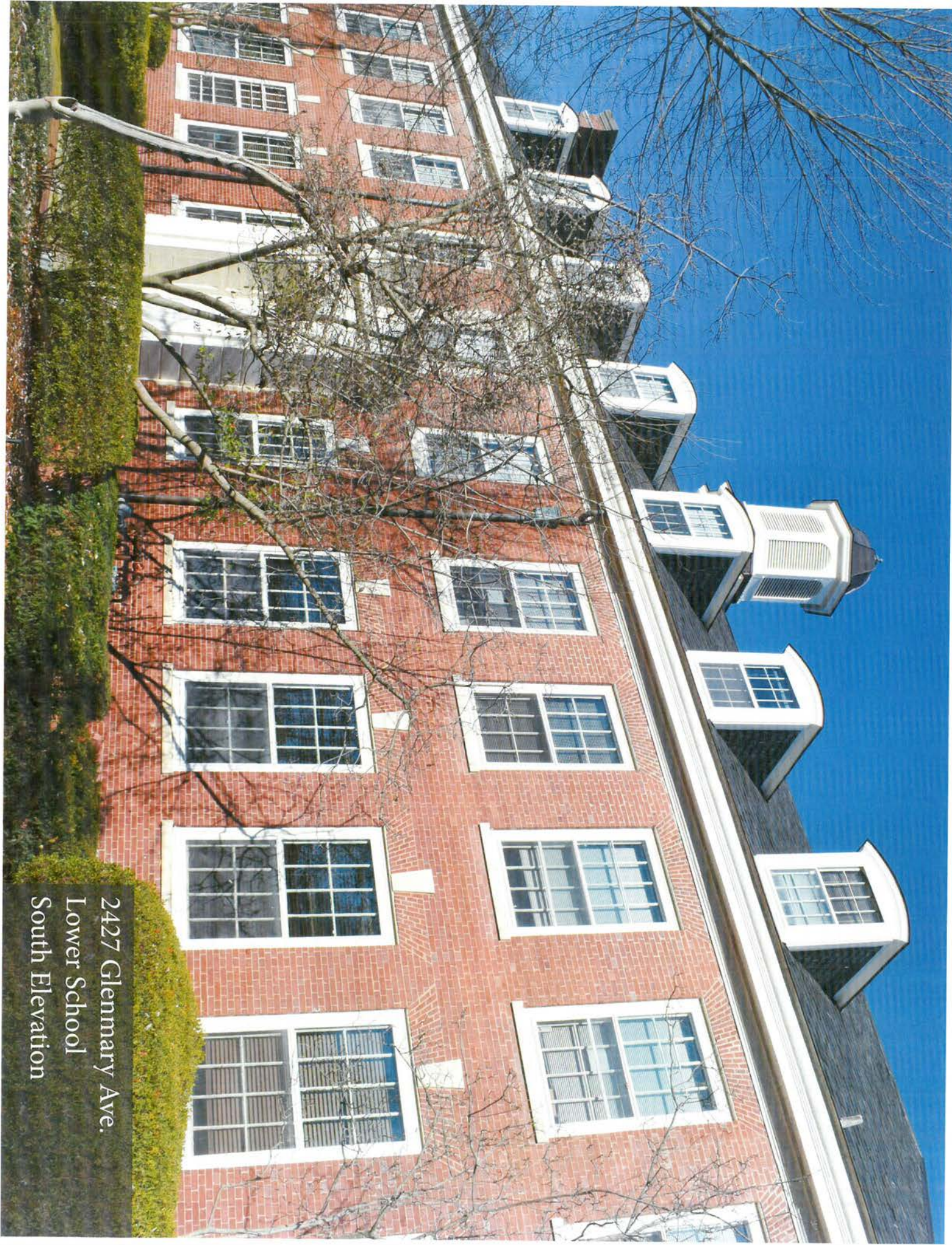


LOUISVILLE COLLEGIATE SCHOOL



2427 Glenmary Ave.  
Lower School  
South Elevation





2427 Glenmary Ave.  
Lower School  
South Elevation





2427 Glenmary Ave.

Lower School

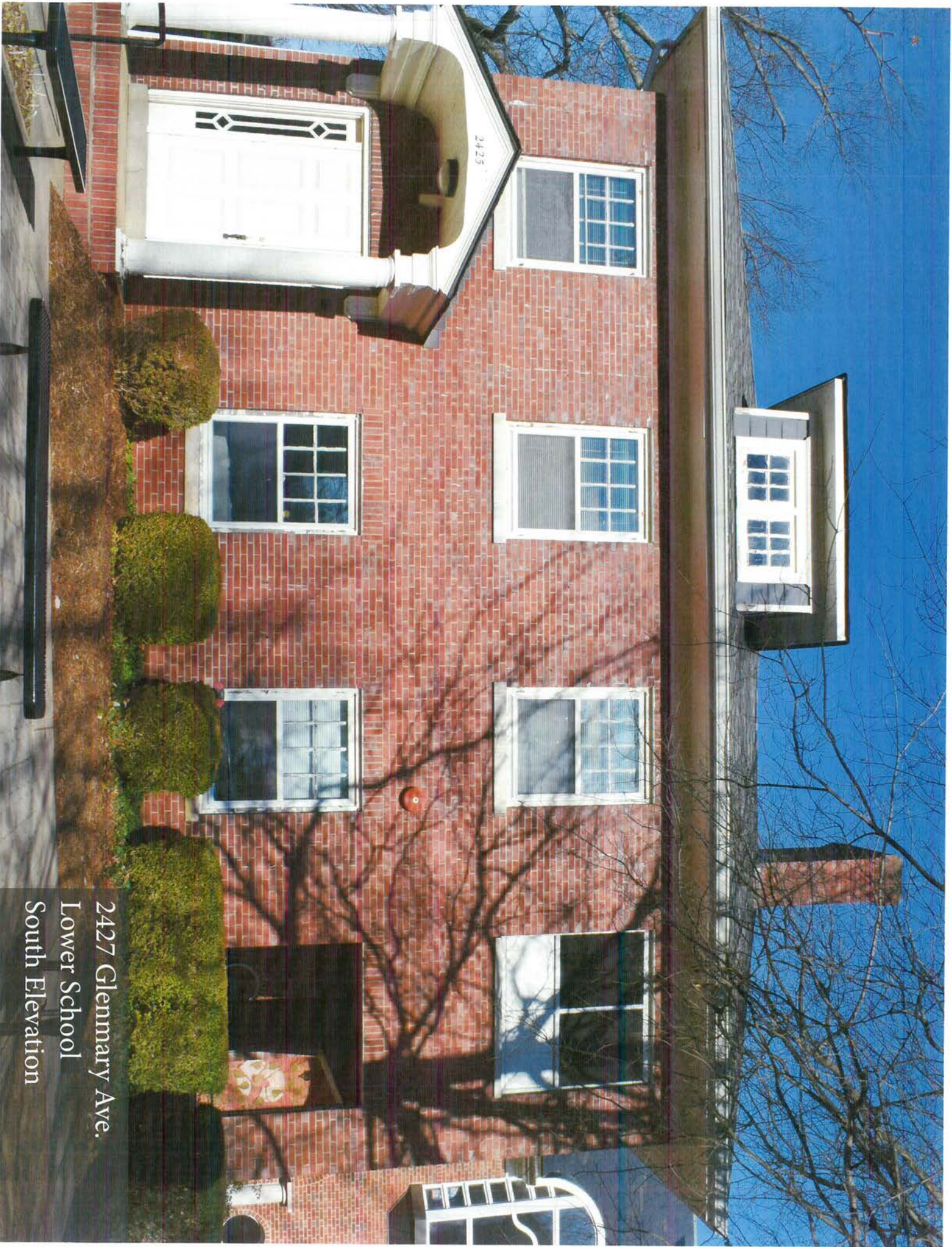
South Elevation





2427 Glennary Ave.  
Lower School  
South Elevation





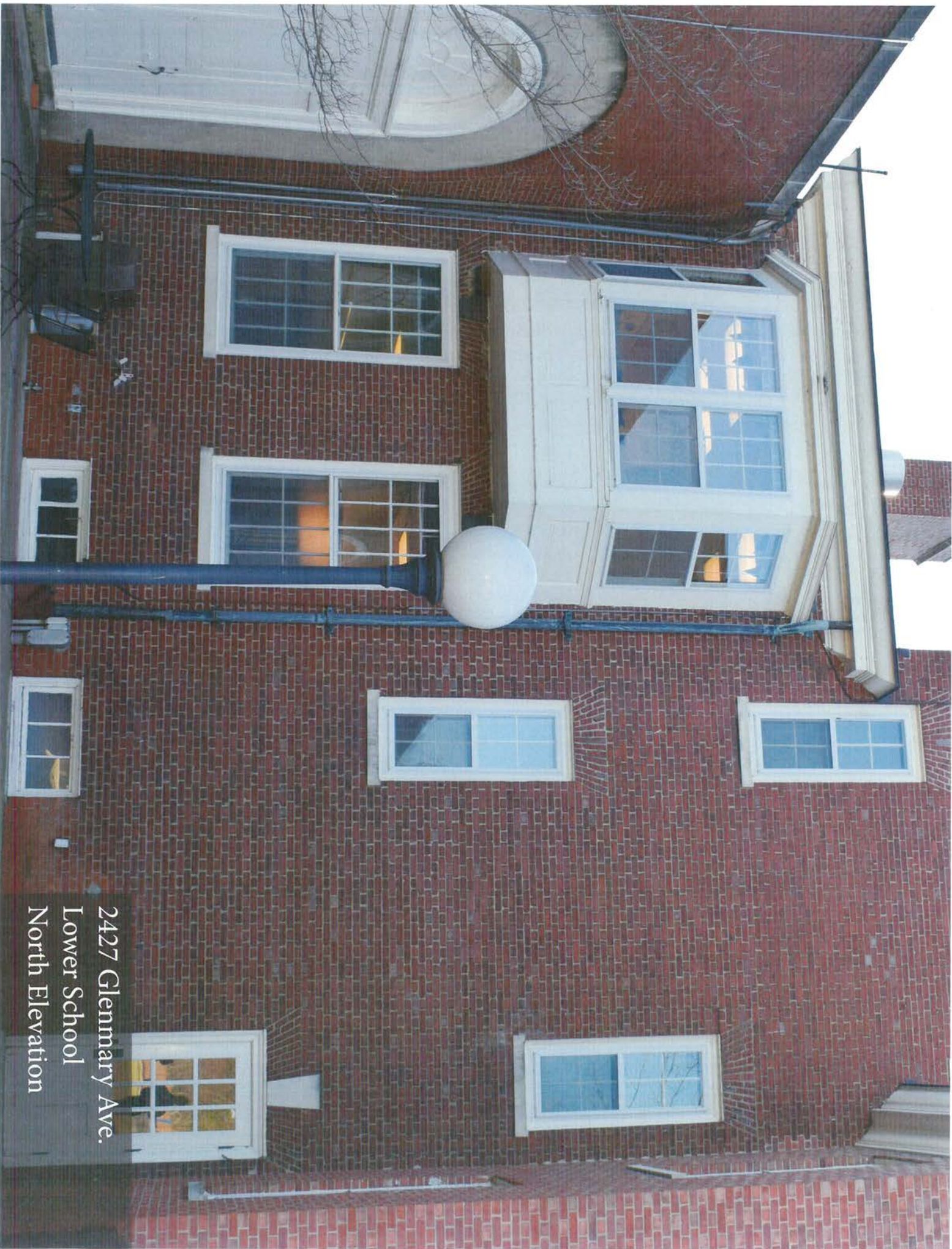
2427 Glenmary Ave.  
Lower School  
South Elevation





2427 Glenmary Ave.  
Lower School  
West Elevation





2427 Glenmary Ave.  
Lower School  
North Elevation





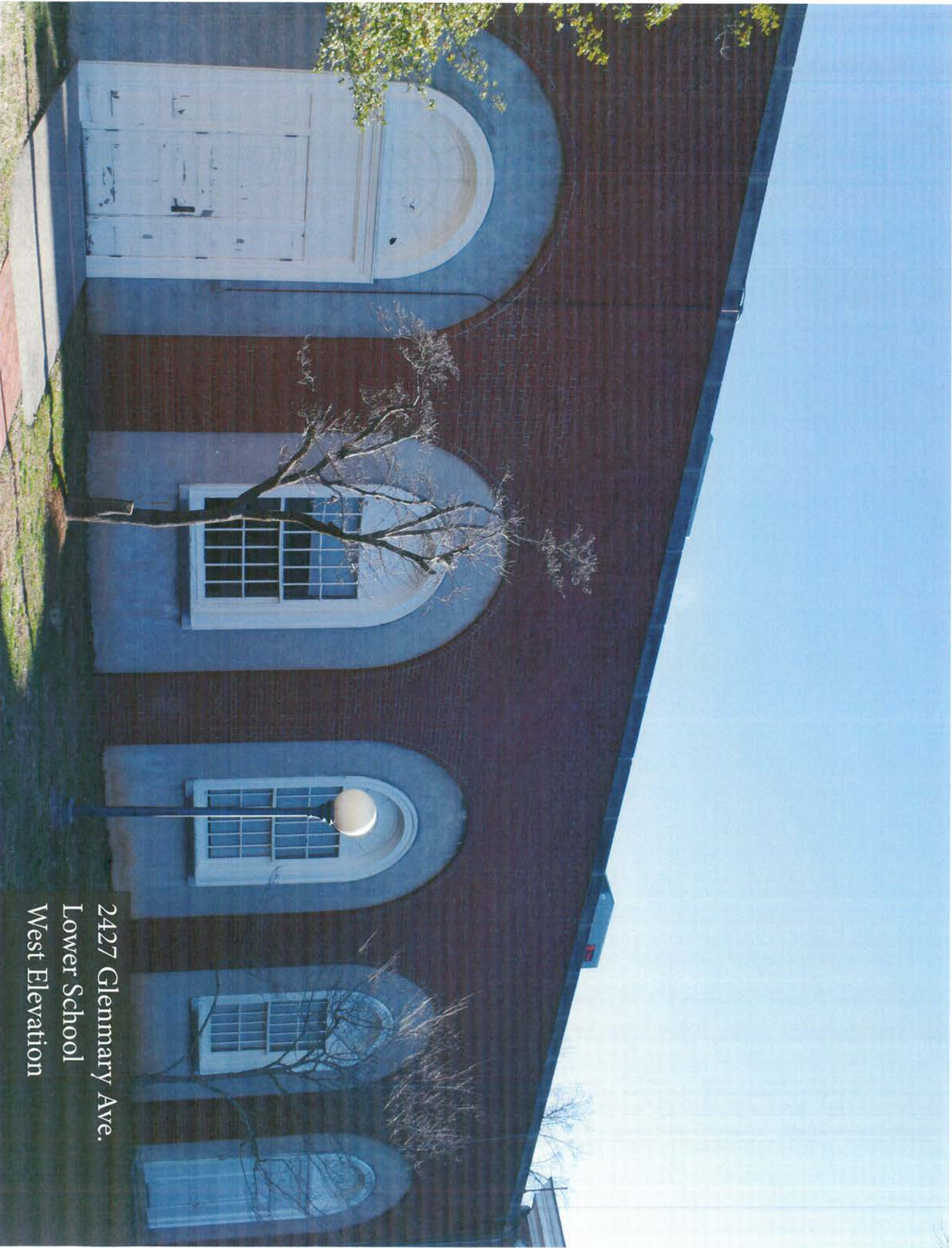
2427 Glenmary Ave.  
Lower School  
North Elevation





2427 Glenmary Ave.  
Lower School  
North Elevation





2427 Glenmary Ave.  
Lower School  
West Elevation





2427 Glenmary Ave.  
Middle School  
East Elevation





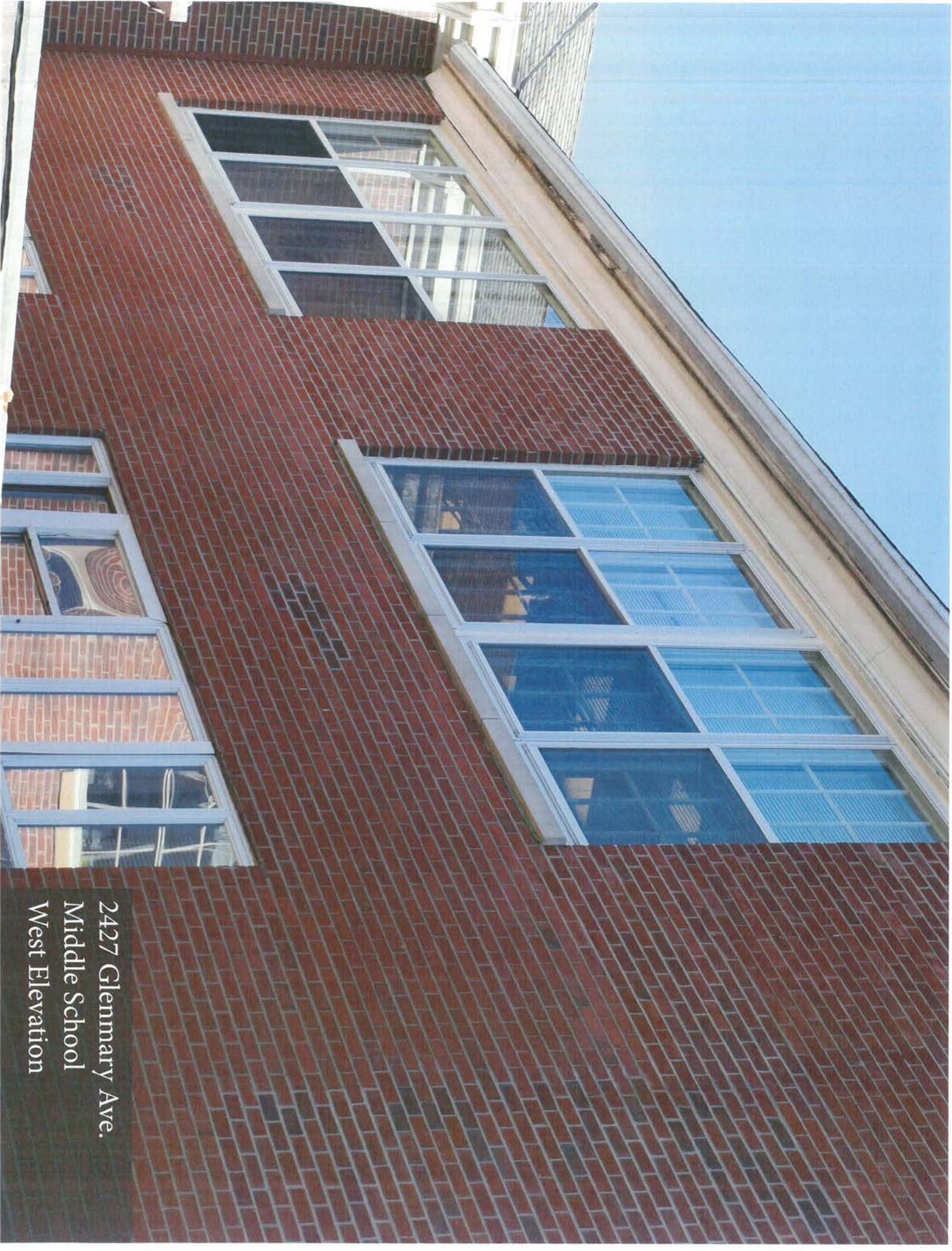
2427 Glenmary Ave.  
Middle School  
East Elevation





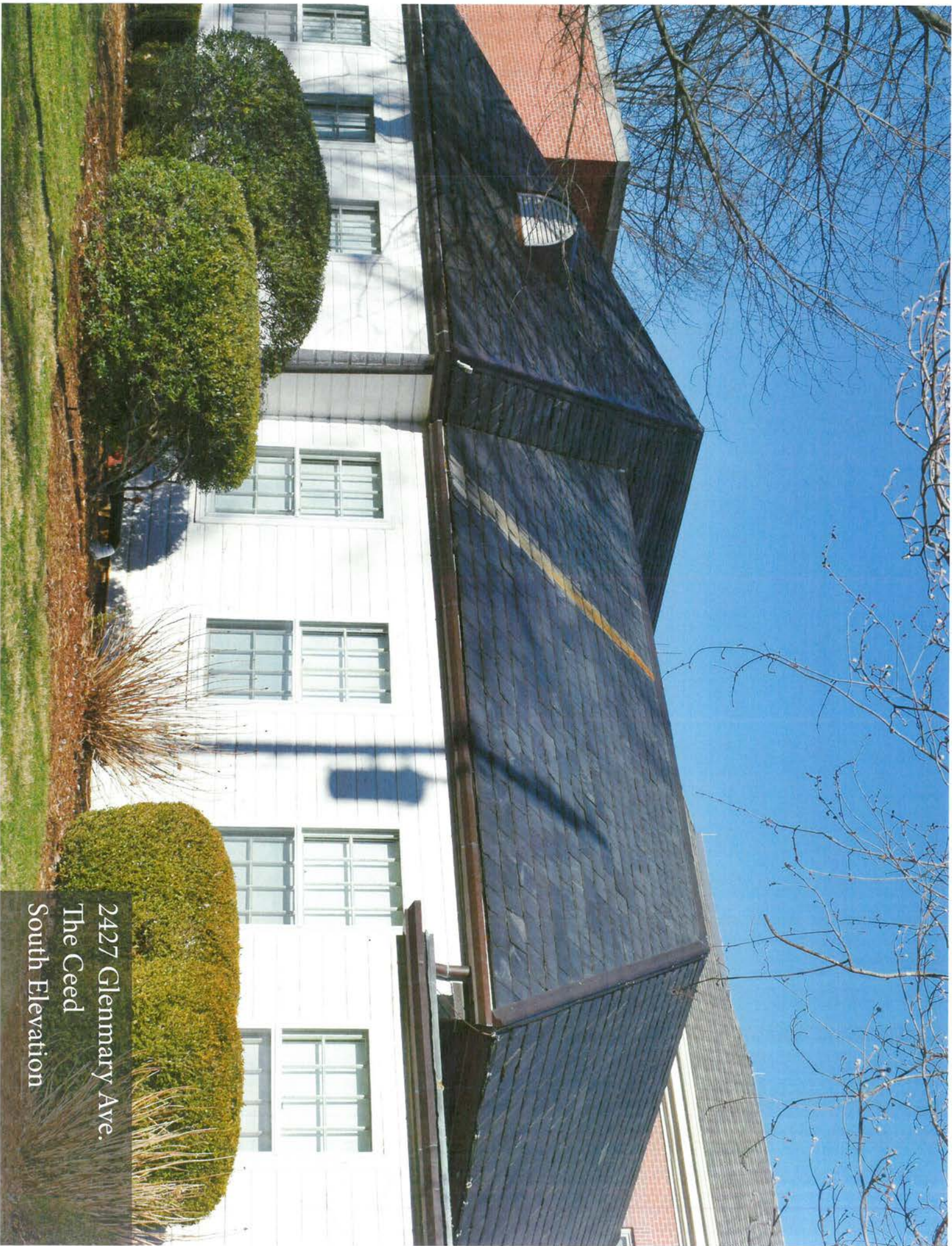
2427 Glenmary Ave.  
Middle School  
South Elevation





2427 Glenmary Ave.  
Middle School  
West Elevation





2427 Glenmary Ave.  
The Ceed  
South Elevation



LOUISVILLE  
COLLEGIATE  
SCHOOL

2427 Glenmary Ave.  
Lower School  
South Elevation

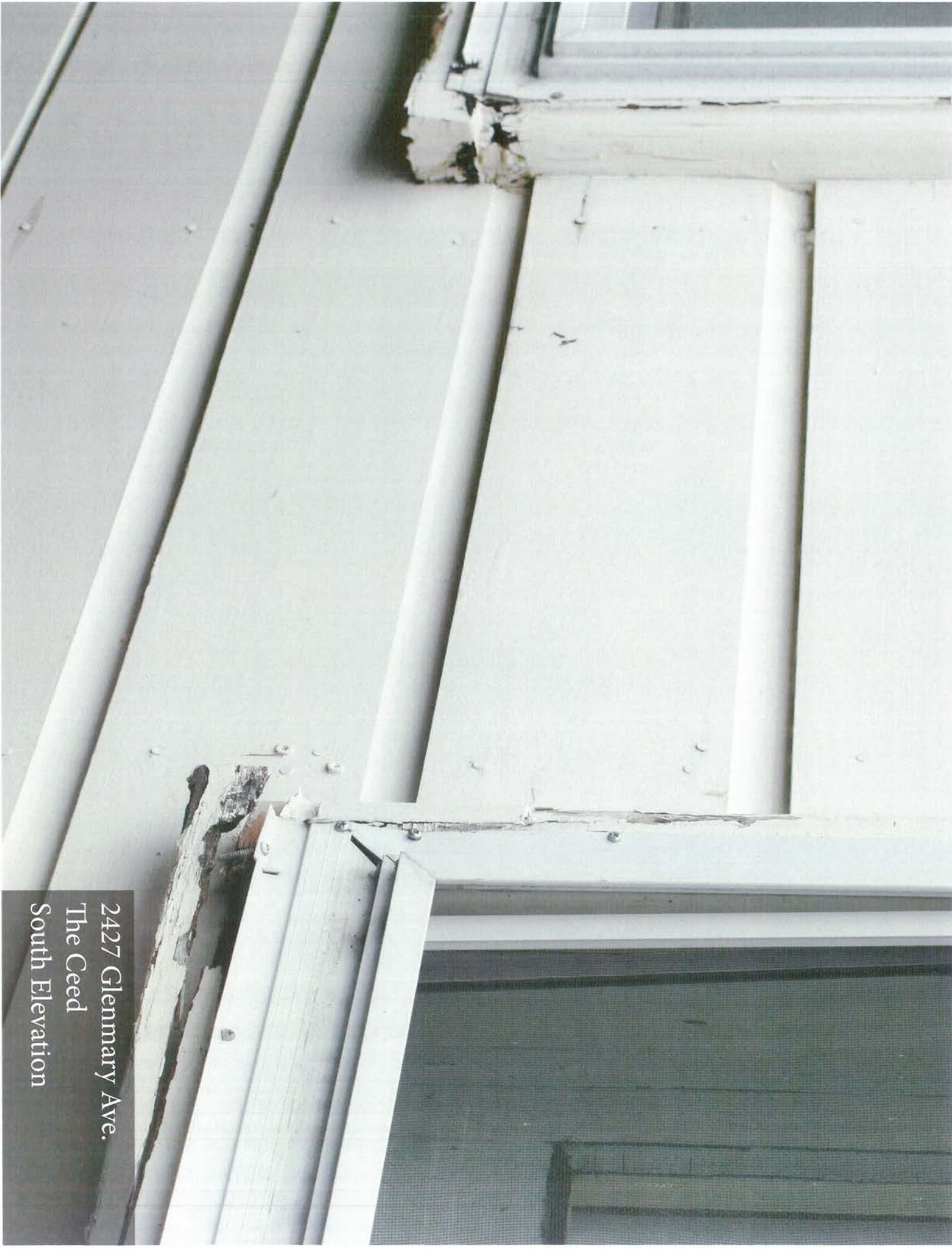






2427 Glenmary Ave.  
Lower School  
West Elevation





2427 Glenmary Ave.  
The Ceed  
South Elevation





2427 Glenmary Ave.  
Lower School  
East Elevation





2427 Glenmary Ave.  
Lower School  
East Elevation





2427 Glenmary Ave.  
Lower School  
North Elevation





2427 Glenmary Ave.  
Lower School  
North Elevation





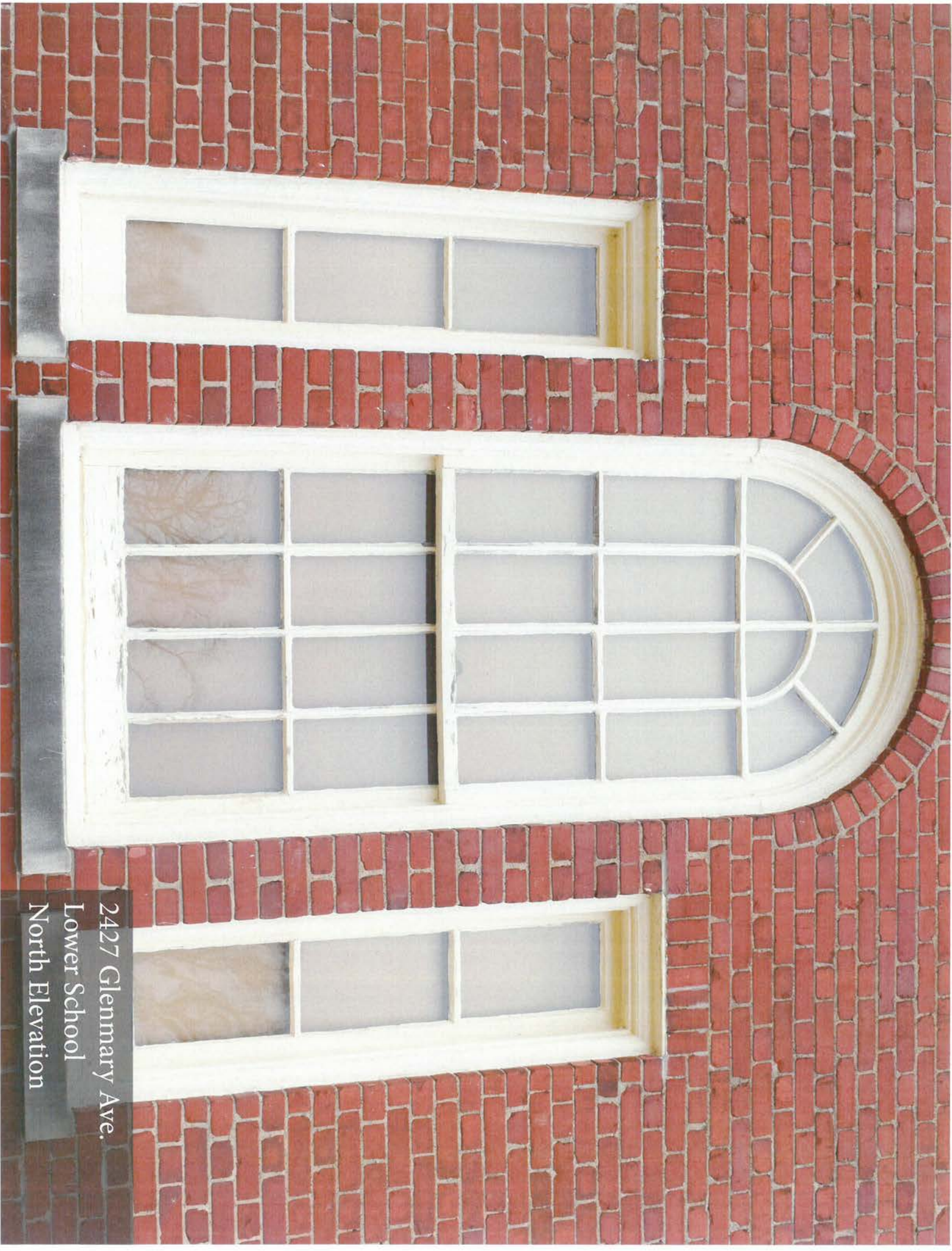
2427 Glenmary Ave.  
Lower School  
West Elevation





2427 Glenmary Ave.  
Lower School  
North Elevation





2427 Glenmary Ave.  
Lower School  
North Elevation





2427 Glenmary Ave.  
Lower School  
North Elevation





2427 Glenmary Ave.  
Lower School  
South Elevation





2427 Glenmary Ave.  
Lower School  
West Elevation





2427 Glenmary Ave.  
Lower School  
South Elevation





2427 Glenmary Ave.  
Lower School  
North Elevation



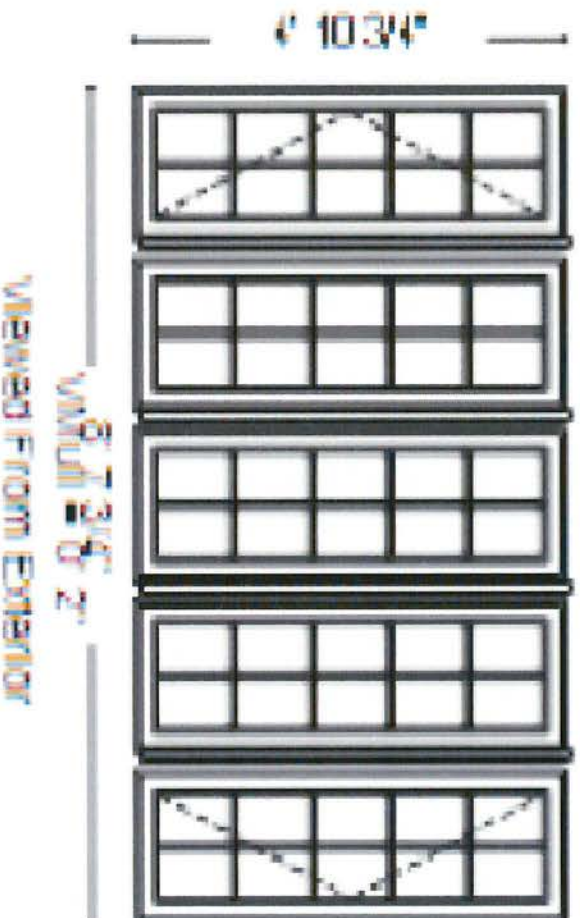
# Andersen Windows and Doors Louisville Collegiate

Elevations and section details

Typical Casement Unit

Link to section details

<https://www.andersenwindows.com/for-professionals/architect/architectural-tools/#-series-bim>

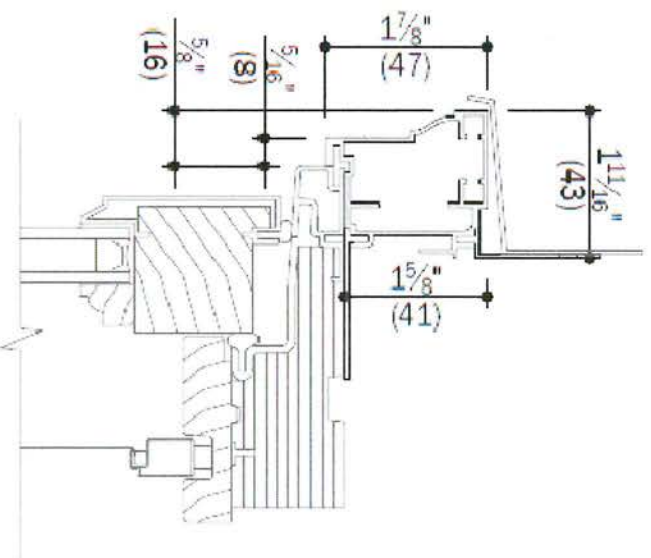
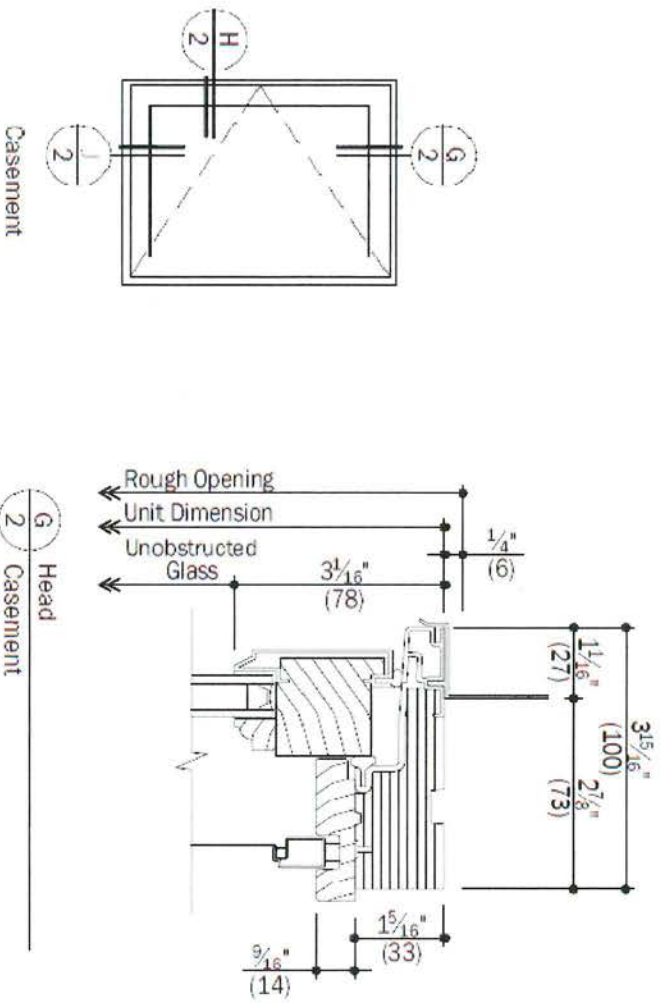




# Andersen Windows and Doors Louisville Collegiate

Elevations and section details

Typical Casement units



Casement Head with BM detail

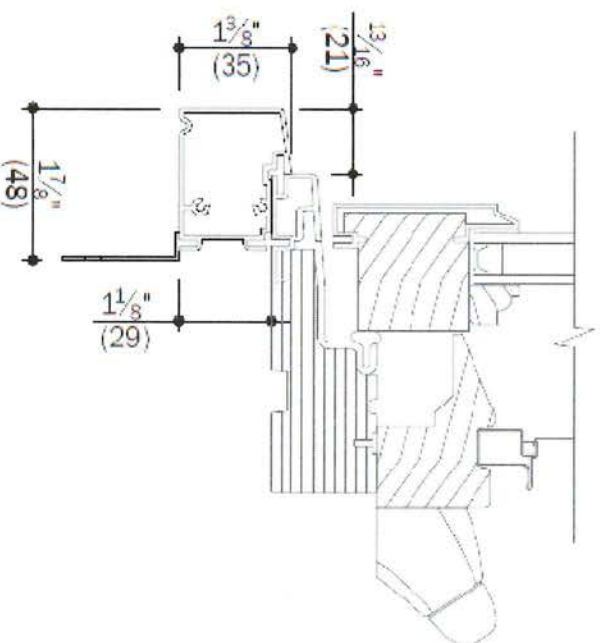
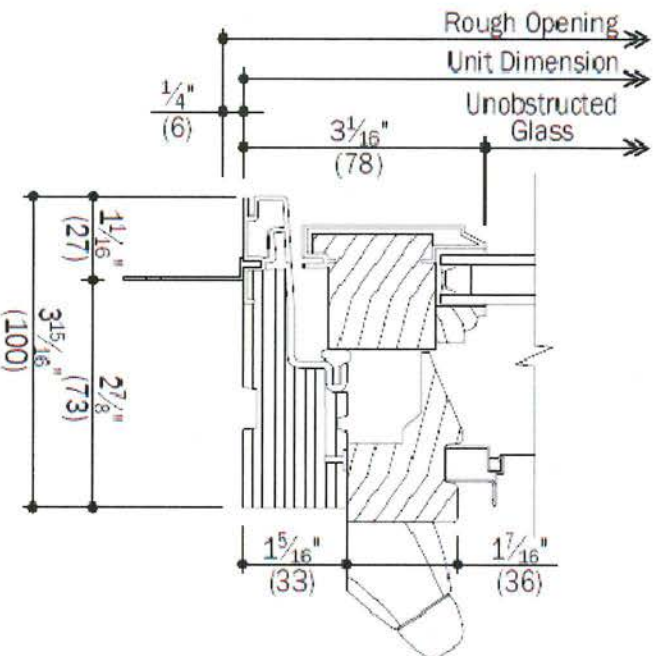




# Andersen Windows and Doors Louisville Collegiate

Elevations and section details

Typical Casement units



Casement with sill nosing trim



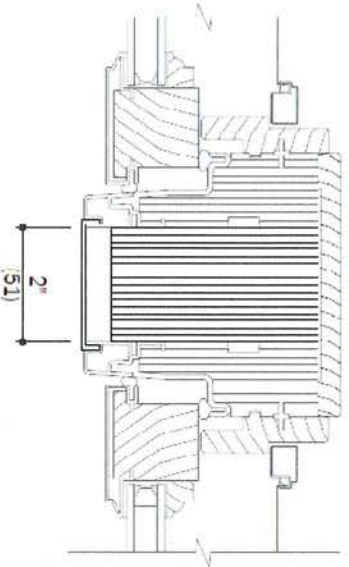


# Andersen Windows and Doors Louisville Collegiate

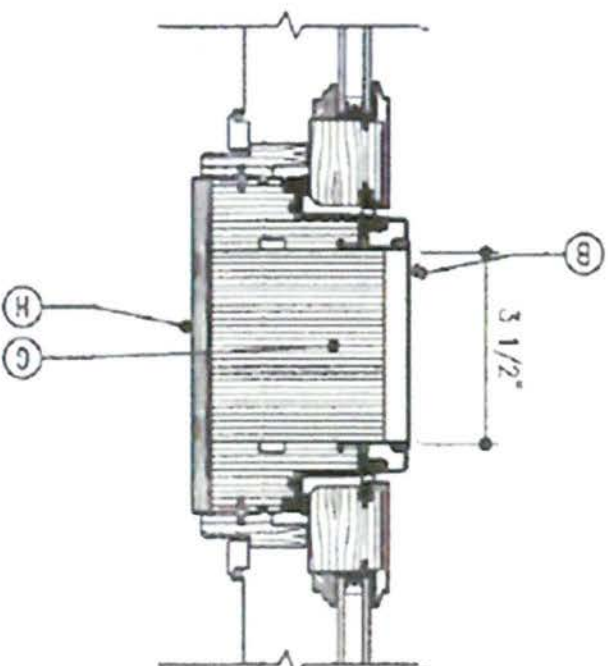
Elevations and section details

Front Elevation with 2" and 3 1/2" spread mulls

Mull details



2" x 3 1/2" Factory LVL Reinforced Join



VERTICAL 3-1/2" X 3-1/2" LVL JOINING  
SCALE: 3" = 1'-0"  
CASEMENT / CASEMENT E-SERIES

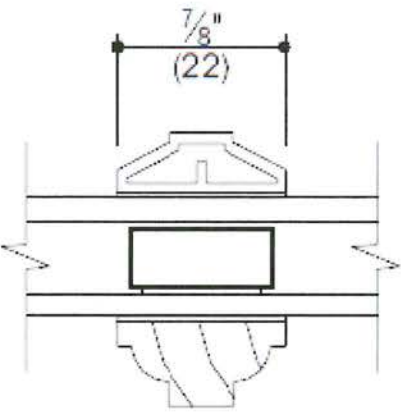




# Andersen Windows and Doors Louisville Collegiate

Elevations and section details

All applied grilles all windows and doors. —  
detail



7/8" Int. Colonial, Ext. Chamfer  
Full Divided Light

Exterior / Interior





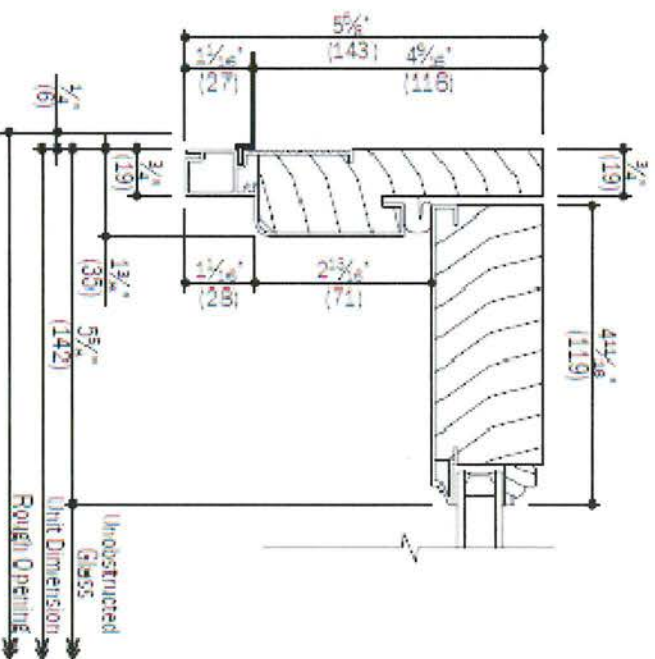
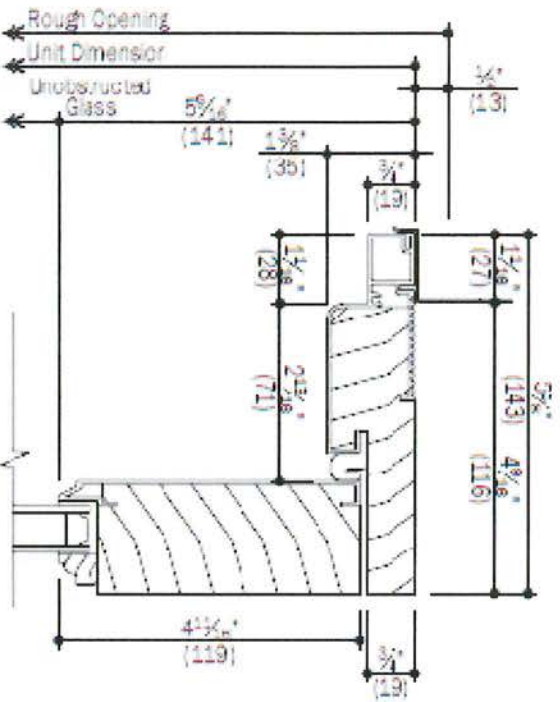




# Andersen Windows and Doors Louisville Collegiate

Elevations and section details

Door Unit

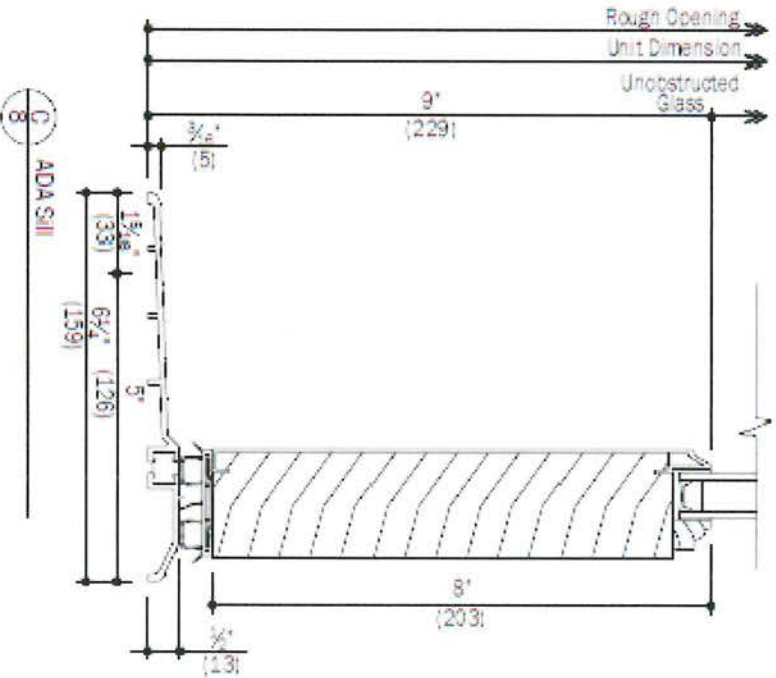
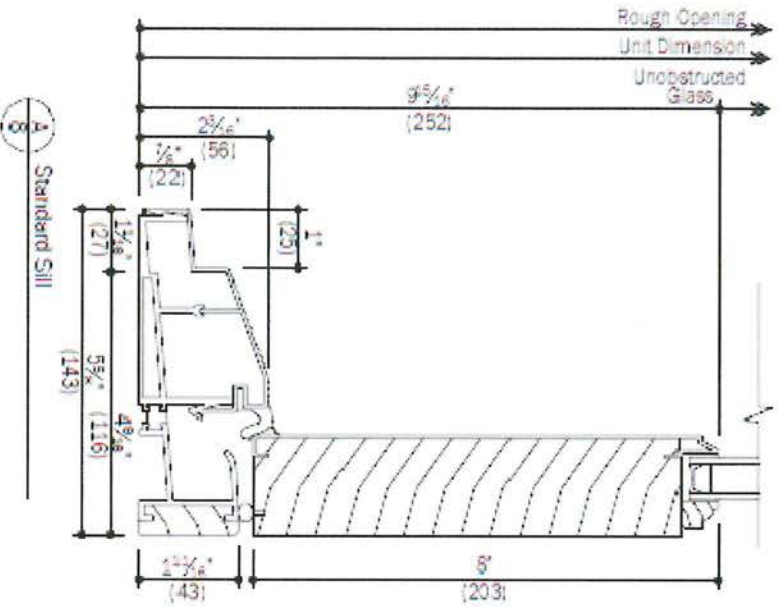




# Andersen Windows and Doors Louisville Collegiate

Elevations and section details

Door Details- Sill options

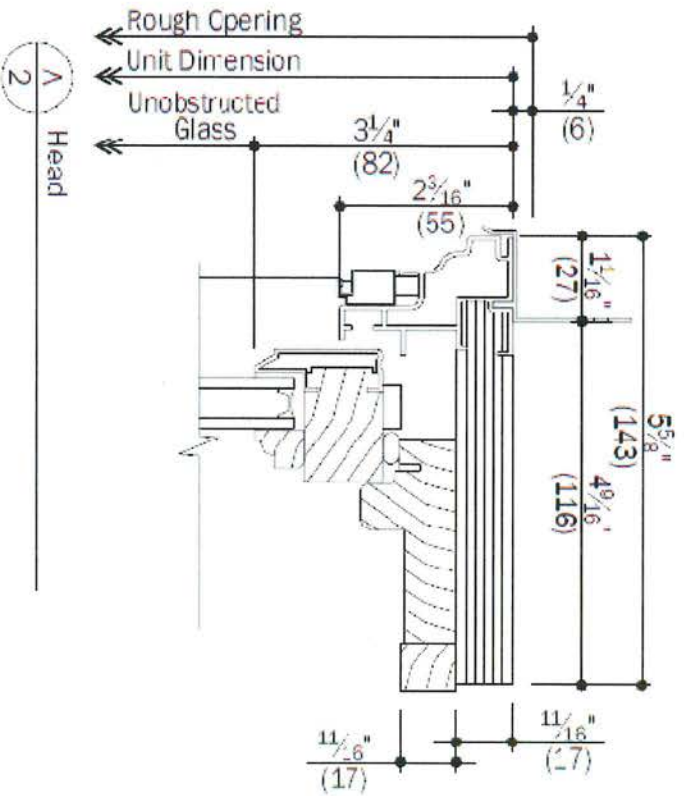
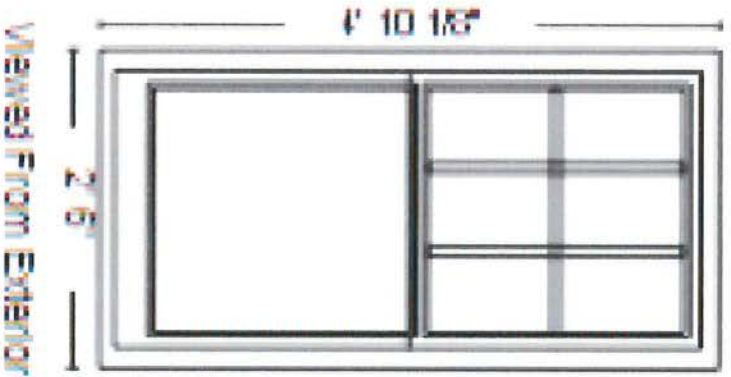




# Andersen Windows and Doors Louisville Collegiate

Elevations and section details

Typical DH Unit

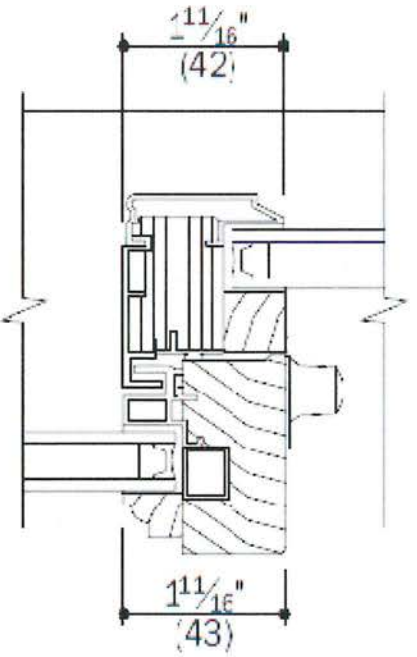




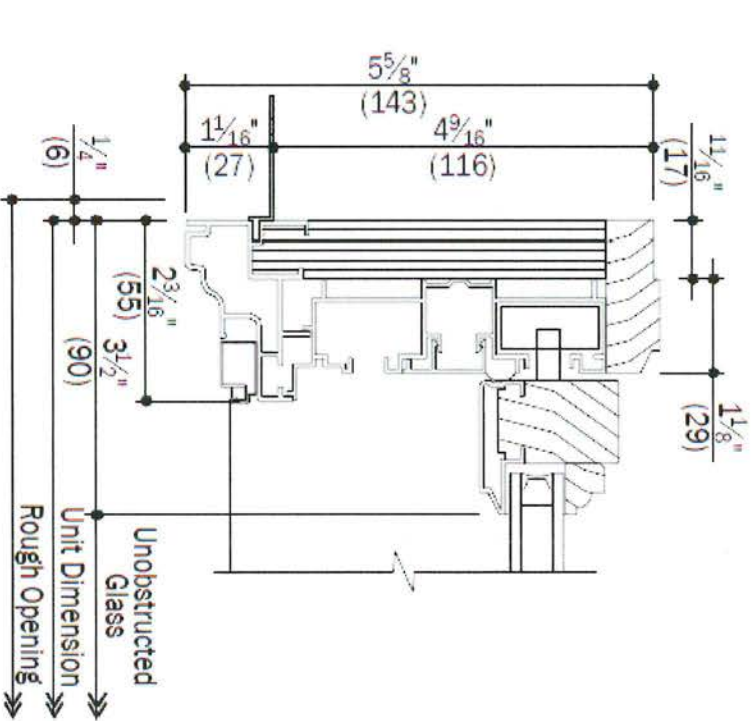
# Andersen Windows and Doors Louisville Collegiate

Elevations and section details

Typical DH



D  
2  
Check Rail

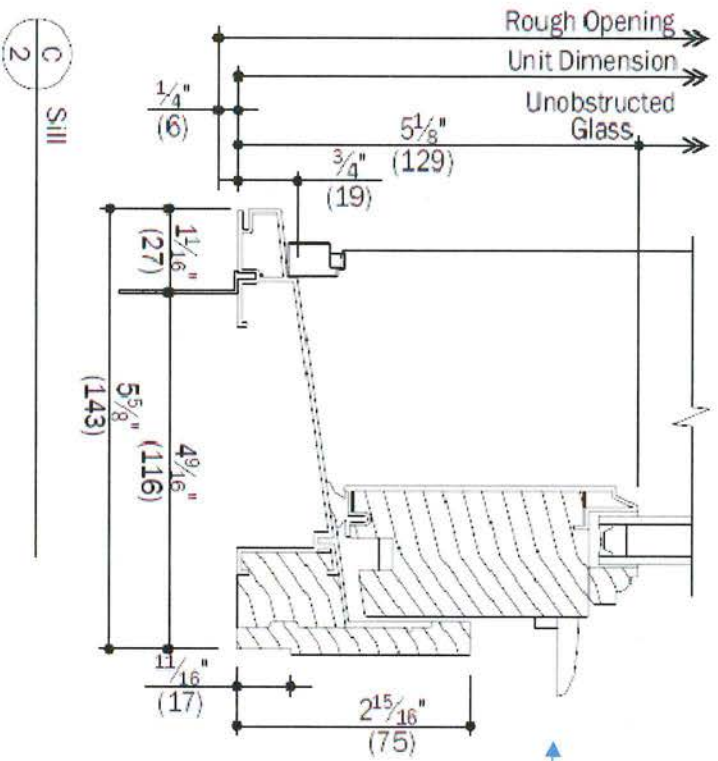




# Andersen Windows and Doors Louisville Collegiate

Elevations and section details

Typical DH



Optional sash lift shown

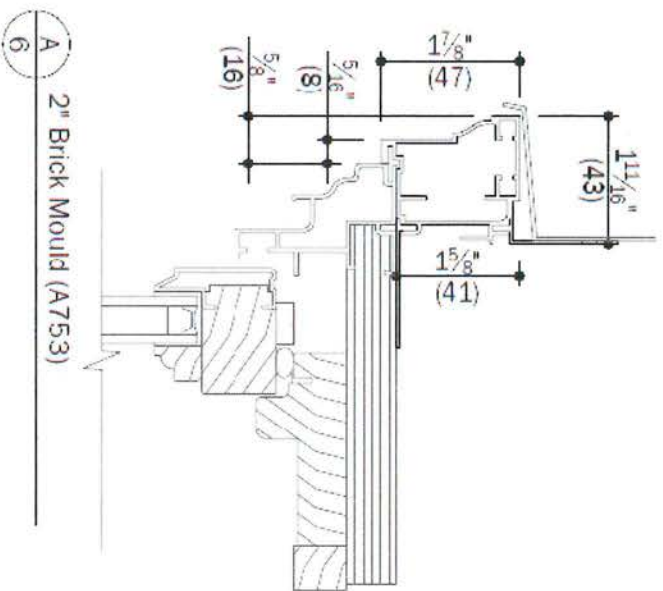




# Andersen Windows and Doors Louisville Collegiate

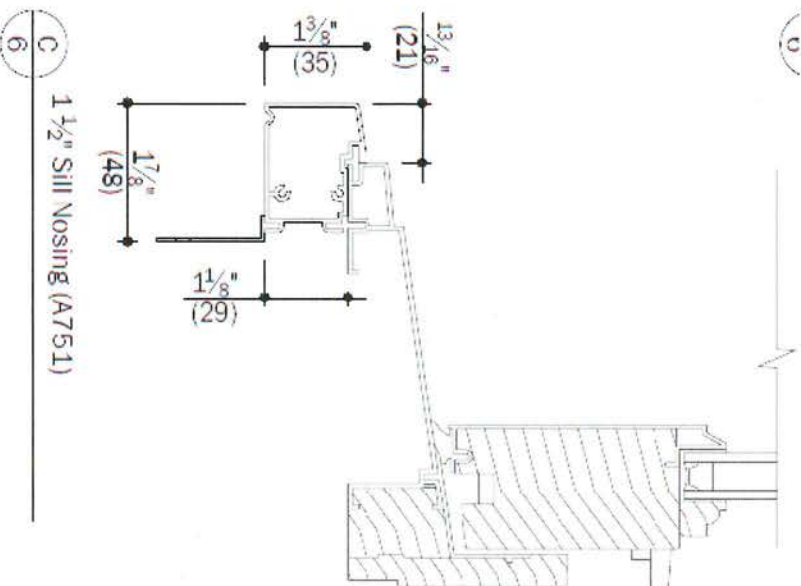
Elevations and section details

Typical DH



DH head with BM

u



DH with sill nosing

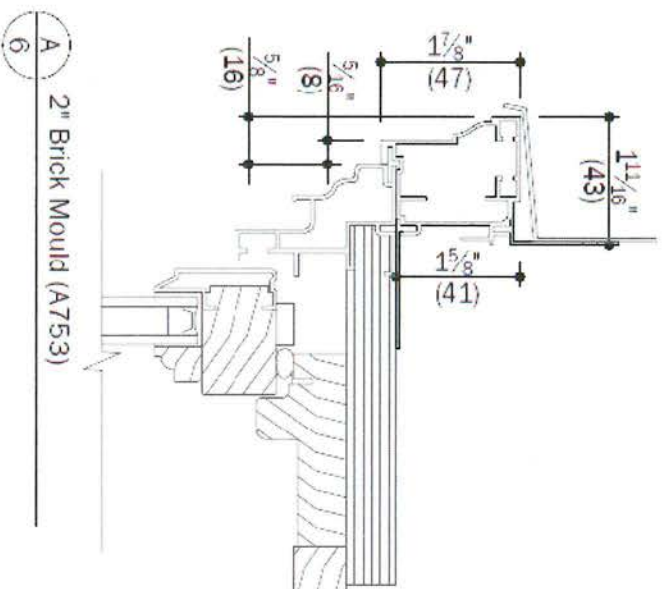




# Andersen Windows and Doors Louisville Collegiate

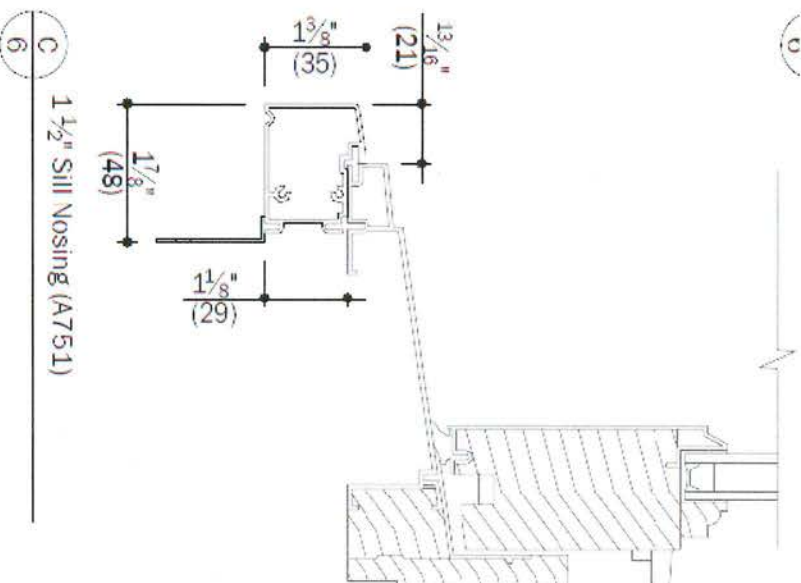
Elevations and section details

Typical DH



DH head with BM

Optional sash lift shown



DH with sill nosing

Optional sash lift shown







## INDUSTRY RECOGNITION

Our drive to make windows that are different and better has been at the heart of our company for over 115 years, leading us to pioneer new products, set higher standards for our entire industry and ultimately, become America's premier window manufacturer.

As a result, homeowners recognize Andersen more than any other brand\* and for 20 years running, builders have used Andersen® windows more than any other brand\*\*.



Hanley Wood Builder Brand Use Study  
1998-2018, Windows - Wood & Clad-Wood Category



Hanley Wood Remodeling Brand Use Study  
2006, 2010, 2013, 2015, 2017, Windows - Wood & Clad-Wood Category



Andersen Corporation named 2018 ENERGY STAR® Partner of the Year



Awarded Most Environmentally Friendly Windows 7 years running, 2011-2018



America's Most Trusted Window Brand  
America's Most Trusted® Study from Lifestory Research, 2019





## ENVIRONMENTAL RESPONSIBILITY

Andersen is committed to continuing our long-standing leadership in environmental stewardship to make a positive impact in the communities where we live and work by providing you with long-lasting, energy-efficient windows and doors.



Andersen has been part of the ENERGY STAR® program since it started and was the first window manufacturer to be named ENERGY STAR National Window Partner of the Year in 1999.

▶ See Why Andersen Corporation Supports ENERGY STAR

<http://www.yourdoorconnection.com/2664VZ260>



Andersen Corporation is a charter member of the U.S. Green Building Council and is a strong supporter of its LEED® leadership in Energy and Environmental Design National Green Building Standard rating system.



Andersen is a founding level member of the Alliance to Save Energy and was the first window company to become a member. The Alliance to Save Energy is an organization of members of Congress and corporate executives committed to promoting energy efficiency.



Andersen was the first window and door manufacturer with Green Seal™ certified products. Certification is based on Green Seal standards, which contain performance, health and sustainability criteria.



Andersen was one of the first in the window and door industry to receive Forest Stewardship Council® (FSC®) Chain-of-Custody certification (FSC-COC16636). This certification is awarded to companies that meet FSC standards for traceability in their wood supply chain.



Andersen has produced Hallmark Certified products since the 1970s with an ongoing commitment to sustainability and manufacturing processes that are environmentally responsible.



Andersen was the first window and door company to receive SCS Indoor Air Quality and Recycled Content Certification. Our Indoor Advantage Gold Certification by SCS Global Services (SCS) meets the rigorous high standards for healthier indoor air quality set by the California Specification 01350.





## VALUE-ADDED SERVICES

Choose Andersen® products with confidence knowing you and your customers will be getting the quality and performance Andersen built its reputation on, along with extraordinary customer service and support.

In addition, our exclusive Owner-2-Owner® limited warranties offer peace of mind, plus real added value.

An icon of crossed wrench and screwdriver.

**INSTALLATION  
SUPPORT**

1M+ configurable product options to create your customized installation guide.

An icon of a shield with a checkmark.

**WARRANTY**

20/10

Owner-2-Owner® Limited Warranty is fully transferable and not prorated.

An icon of a telephone handset.

**CALL CENTER  
SUPPORT**

200+

trained agents to support your technical needs and provide resolutions

An icon of a laptop computer.

**24/7  
ONLINE  
SUPPORT**

An icon of three hands joined together.

**SERVICE  
NETWORK**

1,000

service providers available to assist with on-site needs



# Andersen Windows and Doors Louisville Collegiate

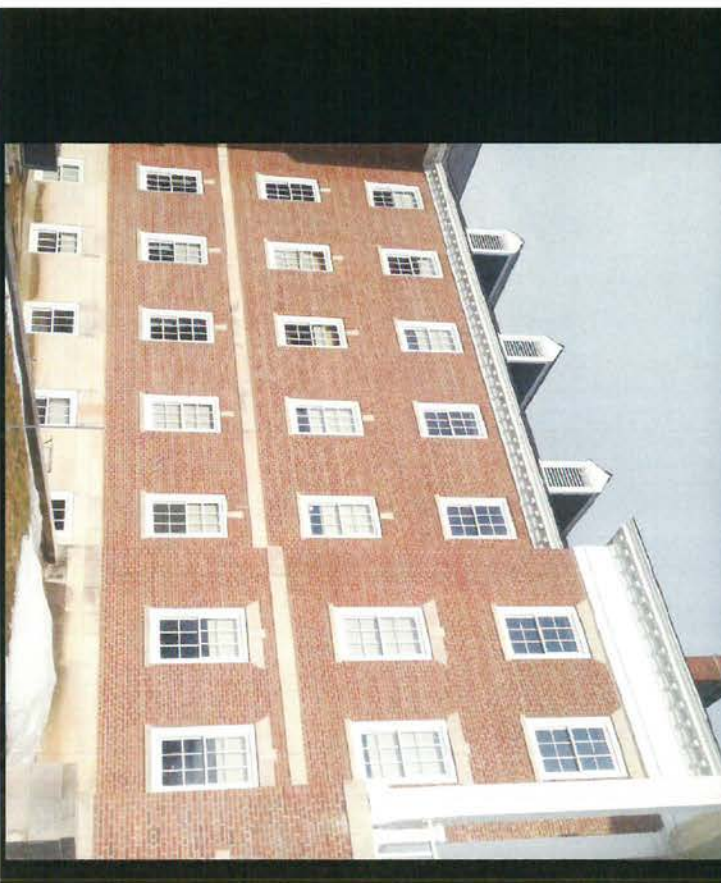
E Series Historic Projects



Historic Replacement; Andersen E-Series



VA Medical Center; Andersen E-Series



WINDOWS • DOORS  
**Andersen**  
AW  
BE ORANGE.

AW  
ARCHITECTURAL  
COLLECTION



# Andersen Windows and Doors Louisville Collegiate

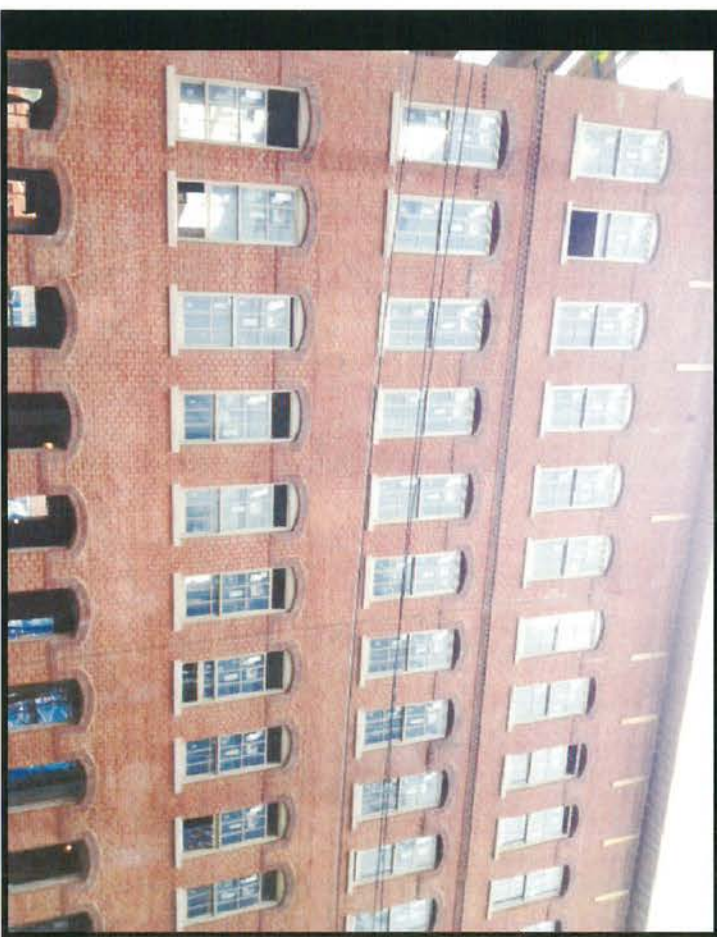
E Series Historic Projects



Mixed Use; Andersen E-Series



Multi-Family; Andersen E-Series



Andersen<sup>®</sup> WINDOWS • DOORS  
**AW**  
BE ORANGE.

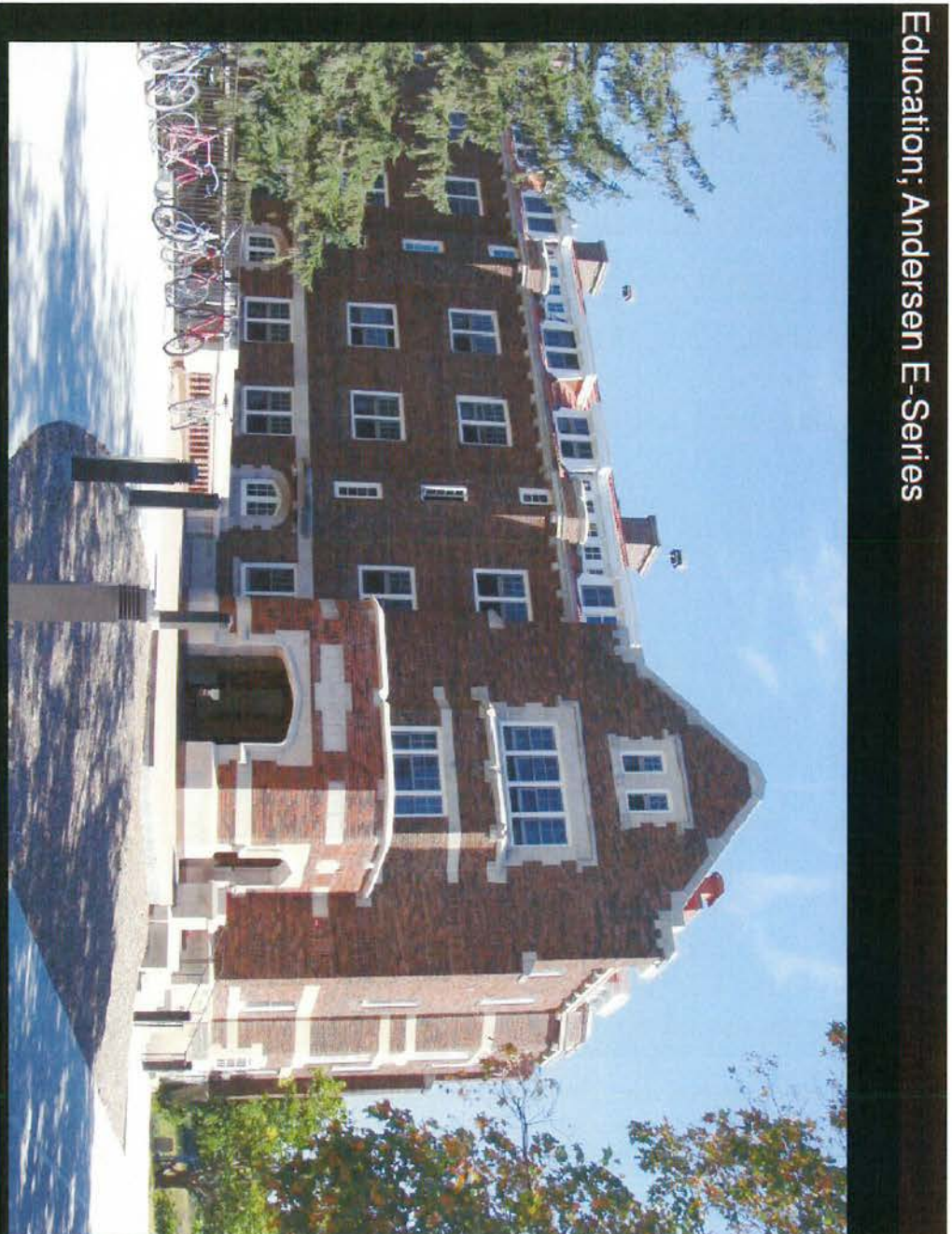
**AW**  
ARCHITECTURAL  
COLLECTION



# Andersen Windows and Doors Louisville Collegiate

E Series Historic Projects

Education; Andersen E-Series



WINDOWS • DOORS  
**Andersen**  
AW  
BE ORANGE.

AW  
ARCHITECTURAL  
COLLECTION



# Andersen Windows and Doors Louisville Collegiate

E Series Historic Projects

Community Building; Andersen E-Series



WINDOWS • DOORS  
**AW**  
BE ORANGE.

**AW**  
ARCHITECTURAL  
COLLECTION





## Unlimited Possibilities to Create your Original

DOUBLE-HUNG, CASEMENT, AWNING, GLIDING, PICTURE AND SPECIALTY WINDOWS

HINGED AND GLIDING PATIO DOORS

### UNLIMITED EXTERIORS

- Extruded aluminum exteriors
- 50 exterior colors
- 2-, 3- and 4-tone exteriors
- 7 anodized finishes
- Custom colors available

### UNLIMITED INTERIORS

- 10 wood species options
- Custom wood species available
- 21 interior finishes
- Custom stains and matching available

### UNLIMITED DESIGNS

- Made to exact design specifications
- Combine shapes, sizes and styles for a unique look
- Wide selection of hardware finishes
- Variety of divided light styles and sizes

### UNLIMITED VIEWS

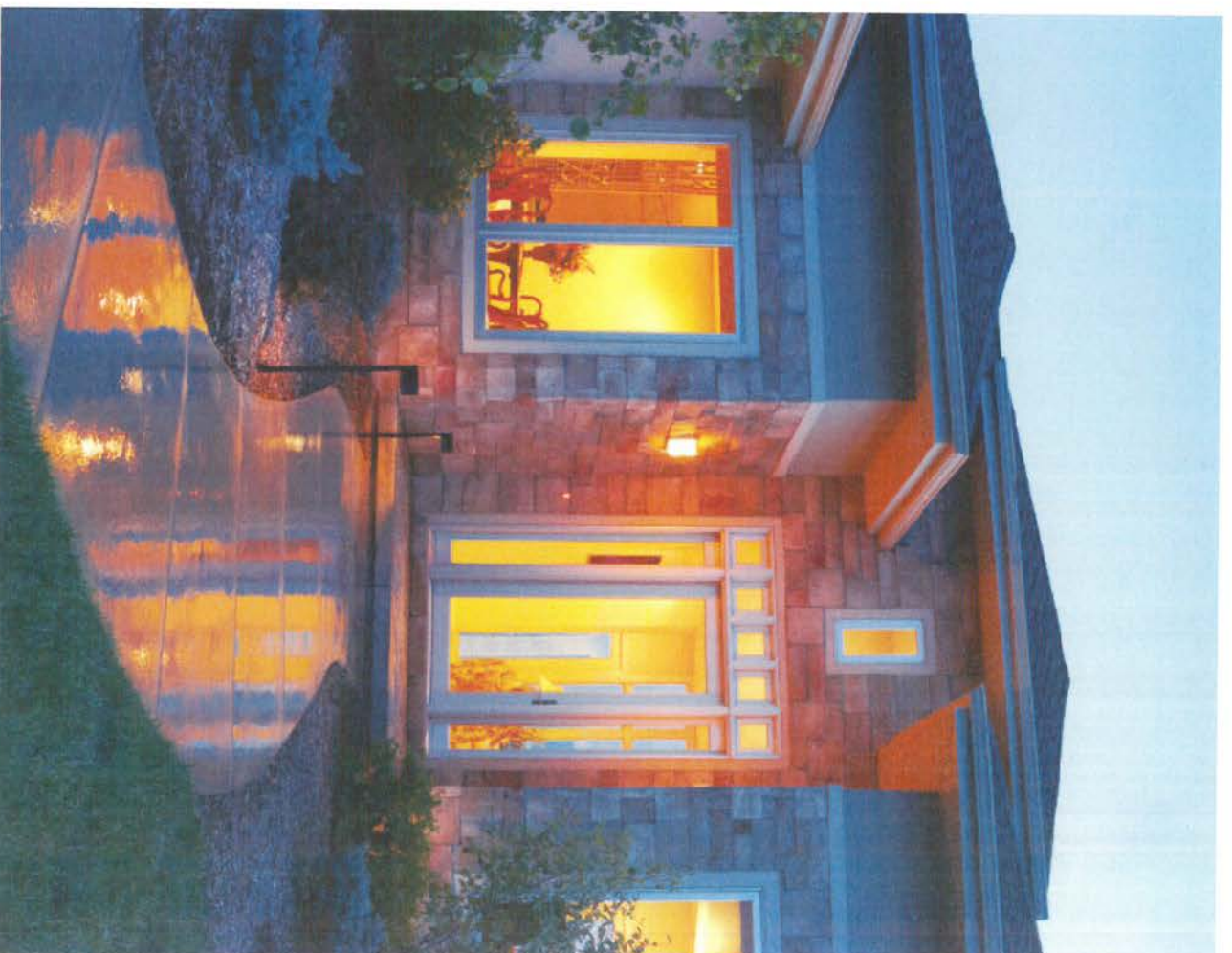
- High-Performance (HP) Low-E4<sup>®</sup> glass standard
- Additional energy-efficient glass options
- Decorative and specialty glass options
- Built-in blind and shade options
- Innovative insect screens





# Exterior Construction

- Heavy gauge, extruded aluminum clad wood sash and frame
- Greater structural capabilities than roll-form aluminum
- Extruded aluminum provides crisp detailing that adds dimension and depth to your designs
- Extrusions slide onto wood and are secured independently, allowing both wood and aluminum to expand and contract naturally





# Exterior Options

- 50 colors meet AAMA 2604 specifications
- Create multi-tone exteriors by mixing and matching colors at no additional charge
- 7 anodized finishes create metallic appearance
- Custom colors and colors conforming to AAMA 2605 specifications available
- Limited warranty covers exteriors for 10 years against chalking and color change and 20 years against cracking, checking, peeling, flaking, blistering and loss of adhesion

## 7 ANODIZED FINISHES



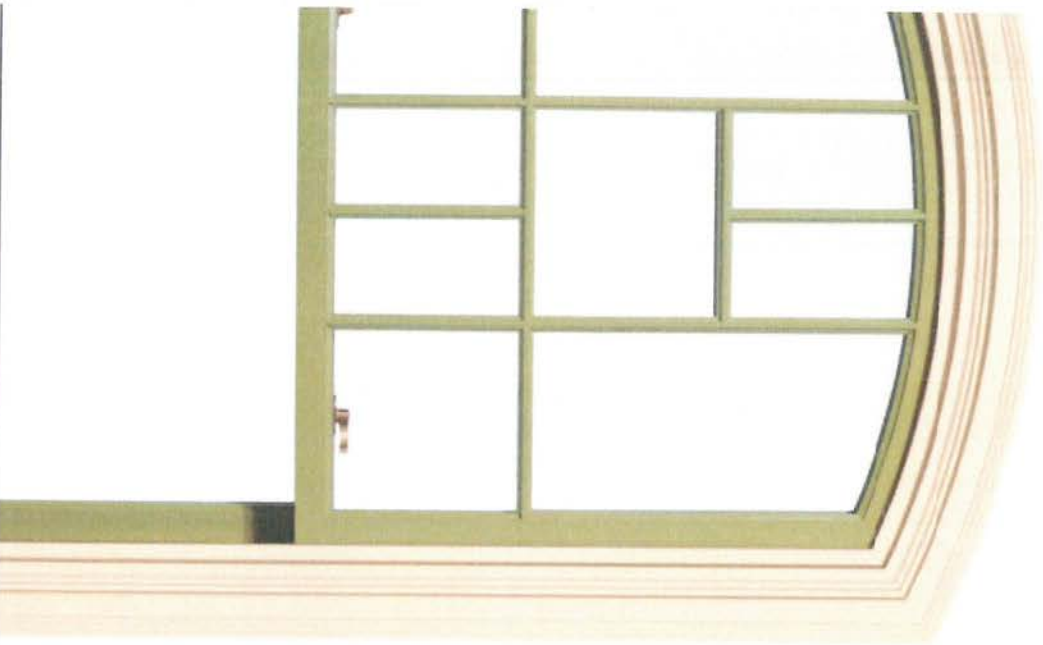
\*See actual windows for details. Finishing options listed present exact color duplication. See your local dealer for actual color samples.

## 50 EXTERIOR COLORS





# Exterior Options



## EXTERIOR TRIM

- Exterior trim adds depth and traditional appeal to your design
- Flat casing, brick mould and sill nosing options available
- Create your own custom profile
- Mix and match exterior colors or anodized finishes for a unique color combination

## EXTERIOR TRIM STYLE OPTIONS



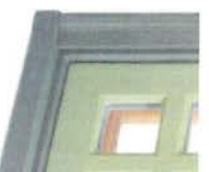
3/4" flat casing shown on hinged inswing patio door



5/16" flat casing and 1 1/2" sill nose shown on casement



2" adjustable brick mould shown on hinged inswing patio door



2" brick mould and 1 1/2" sill nose shown on casement



3/4" brick mould and 1 1/2" deep sill nose shown on double-hung



3/4" backboard and bead casing and 1 1/2" sill nose shown on casement



2" adjustable brick mould and 1 1/2" deep sill nose shown on double-hung



# Interior Options

## WOOD SPECIES

- Natural wood adds character to your design
- Additional wood species and custom species available



The category name is representative of non-sustainable. Actual sustainable.

Finishing instructions provided upon these selections. See your local dealer for actual wood samples. Options are identified across a stain or horizontal option is specified. Please note that some full and color plates may need to be filled out to apply the final finish.



## INTERIOR FINISHES

- Factory-applied stains and painted options offer convenience and beauty
- Exposed edges are stained prior to assembly for complete and consistent finish
- Variety of stains and painted options
- Custom stains and matching available



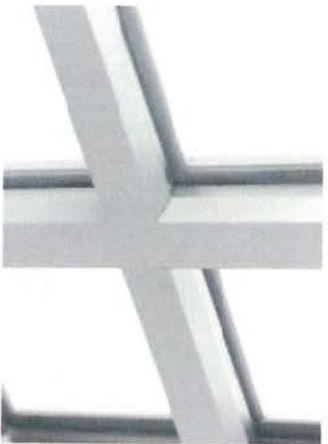
All interior finish options are shown on pine.





# Divided Lights

- Variety of divided light styles and sizes
  - Fixed interior and exterior grilles with or without internal spacers
  - Available in five widths:  $\frac{3}{8}$ ",  $\frac{1}{2}$ ",  $1\frac{1}{8}$ ",  $1\frac{1}{2}$ " and  $2\frac{1}{8}$ "
  - Available in two interior and exterior profiles: colonial and contemporary
  - Removable wood grilles in  $\frac{7}{8}$ " width and two profiles
  - Finelight™ Grilles-Between-the-Glass in two sizes and profiles:  $\frac{3}{8}$ " flat and 1" contoured
- Variety of patterns available
- Mix and match widths to create your own design



Interior View, Contemporary Grille Profile shown in Woodless Sliver with a stainless steel spacer bar



Full Divided Lights (shown in wood profile)



Simulated Divided Lights (shown in contemporary profile)



Removable Wood Grilles (shown in wood profile)



Finelight™ Grilles-Between-the-Glass (shown with 1" contoured with 4)





# Smart Home Solutions

## THE SMARTEST TECHNOLOGY FOR THE SMARTEST HOMES

Andersen® E-Series windows and patio doors can now be part of today's connected home, providing homeowners security, convenience and control. Visit [andersenwindows.com/connect](http://andersenwindows.com/connect) for additional details.



A monitoring option for every home.

**NEW!**

## YALE® ASSURE LOCK® FOR ANDERSEN PATIO DOORS\*

Never worry about carrying or losing keys again. Monitor, lock and unlock from anywhere with the Yale Assure Lock.

### FEATURES AND BENEFITS

- **One-Touch Locking**  
Lock up without the hassle of keys by simply tapping the keypad.
- **Key Free**  
No cylinder means no lost keys and no pick and bump break-ins.
- **Battery Back-Up**  
Never lose power, the lock can be energized with a 9V battery.
- **VeriLock® Security Sensors**  
Know whether your doors are open, closed, locked or unlocked!
- **Smart Home Integration**  
Monitor, lock and unlock from anywhere.



Yale Assure Lock is available with Andersen® hardware in a Satin Nickel finish.

Satin Nickel

\*Available on select framed doors, see your Andersen supplier for details.





## A Key Free Entry Lock offering Security, Convenience and Control.



Introducing the new Yale® Assure Lock® for Andersen® patio doors. Prohibit lock and unlock from anywhere and never worry about carrying or losing keys again.

The sleek new key free lock includes Bluetooth™ technology for keyless unlocking and is compatible with Z-Wave™ for integration with a wide range of smart home systems.

**One-Touch Locking**  
Lock to unlock the hassle of keys by simply tapping the keypad.

**Key Free**  
No cylinder means no lost keys and no pick or bump concerns.

**Battery Back-Up**  
Never lose power. The lock can be recharged with a 3V battery.

**VeriLock Security Sensors**  
Know whether your doors are open or closed. Locks or unlocks.

**Smart Home Integration**  
Popular, lock and unlock from anywhere.

### Compatibility:

Yale Assure Lock can be ordered with these new Andersen products or retro-fitted to existing in your home.

- 4-Series 4-Panel Patio Doors
- 5-Series 4-Panel Patio Doors
- Contemporary Curved Top Patio Doors
- Encouraged Doors

### Finish Options:

Yale Assure Lock is available with Andersen hardware in a Satin Nickel finish.



Satin Nickel



Yale Assure Lock is available with Andersen hardware in a Satin Nickel finish.







# Land Development Report

November 8, 2019 2:40 PM

About LDC

## Location

**Parcel ID:** 075H00170000  
**Parcel LRSN:** 76993  
**Address:** MULTIPLE ADDRESSES

## Zoning

**Zoning:** R7  
**Form District:** TRADITIONAL NEIGHBORHOOD  
**Plan Certain #:** NONE  
**Proposed Subdivision Name:** NONE  
**Proposed Subdivision Docket #:** NONE  
**Current Subdivision Name:** GLENMARY SUBDIVISON, HENNING & SPEEDS  
HIGHLAND ADDITION  
**Plat Book - Page:** 02-322, 08-024  
**Related Cases:** 15DEVPLAN1125, B-205-98

## Special Review Districts

**Overlay District:** NO  
**Historic Preservation District:** CHEROKEE TRIANGLE  
**National Register District:** CHEROKEE TRIANGLE  
**Urban Renewal:** NO  
**Enterprise Zone:** NO  
**System Development District:** NO  
**Historic Site:** YES - MULTIPLE

## Environmental Constraints

### Flood Prone Area

**FEMA Floodplain Review Zone:** NO  
**FEMA Floodway Review Zone:** NO  
**Local Regulatory Floodplain Zone or  
Combined Sewer Floodprone Area:** NO  
**Local Regulatory Conveyance Zone:** NO  
**FEMA FIRM Panel:** 21111C0043E

### Protected Waterways

**Potential Wetland (Hydric Soil):** NO  
**Streams (Approximate):** NO  
**Surface Water (Approximate):** NO

### Slopes & Soils

**Potential Steep Slope:** NO  
**Unstable Soil:** NO

### Geology

**Karst Terrain:** YES

## Sewer & Drainage

**MSD Property Service Connection:** YES  
**Sewer Recapture Fee Area:** NO

## Services

**Municipality:** LOUISVILLE  
**Council District:** 8  
**Fire Protection District:** LOUISVILLE #4  
**Urban Service District:** YES