



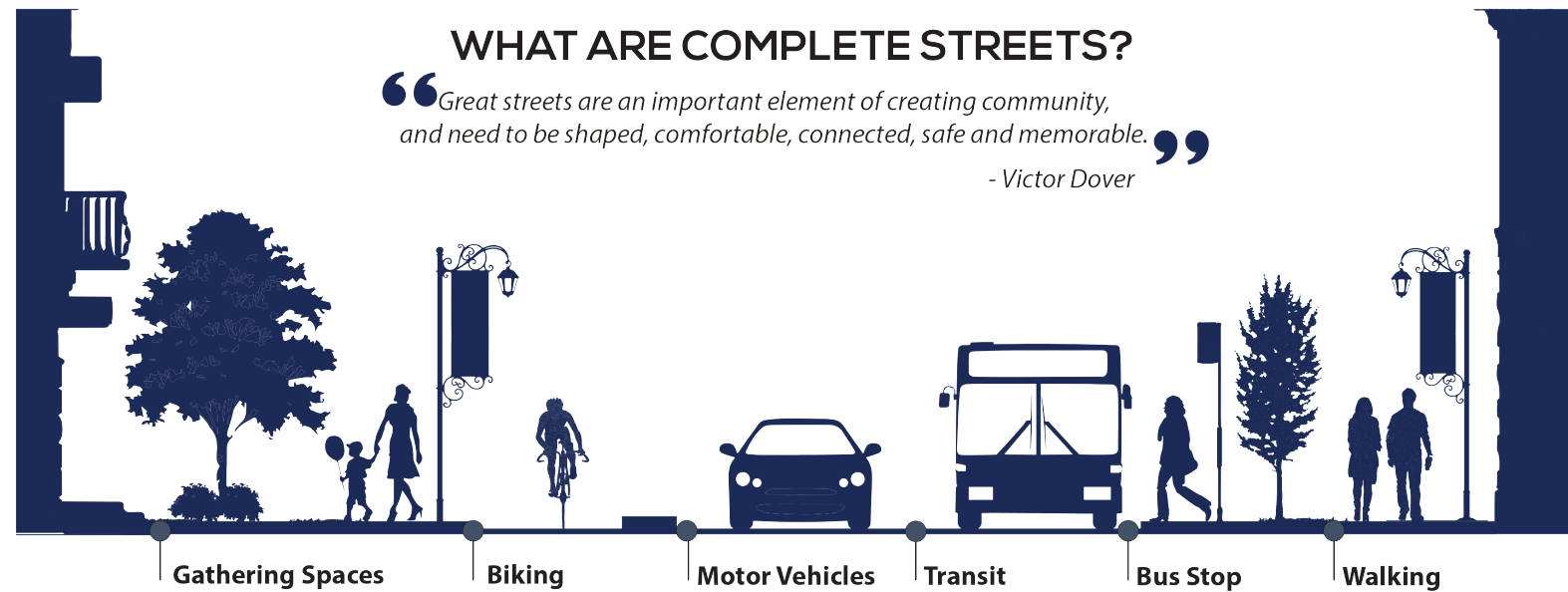
Complete Streets Coalition

NATE KELTCH

5/11/2021

Complete Streets Definition

- ▶ A comprehensive and connected transportation network that is designed, implemented, operated, and maintained in an equitable way to allow for safe use by users, of all ages, incomes, and abilities.







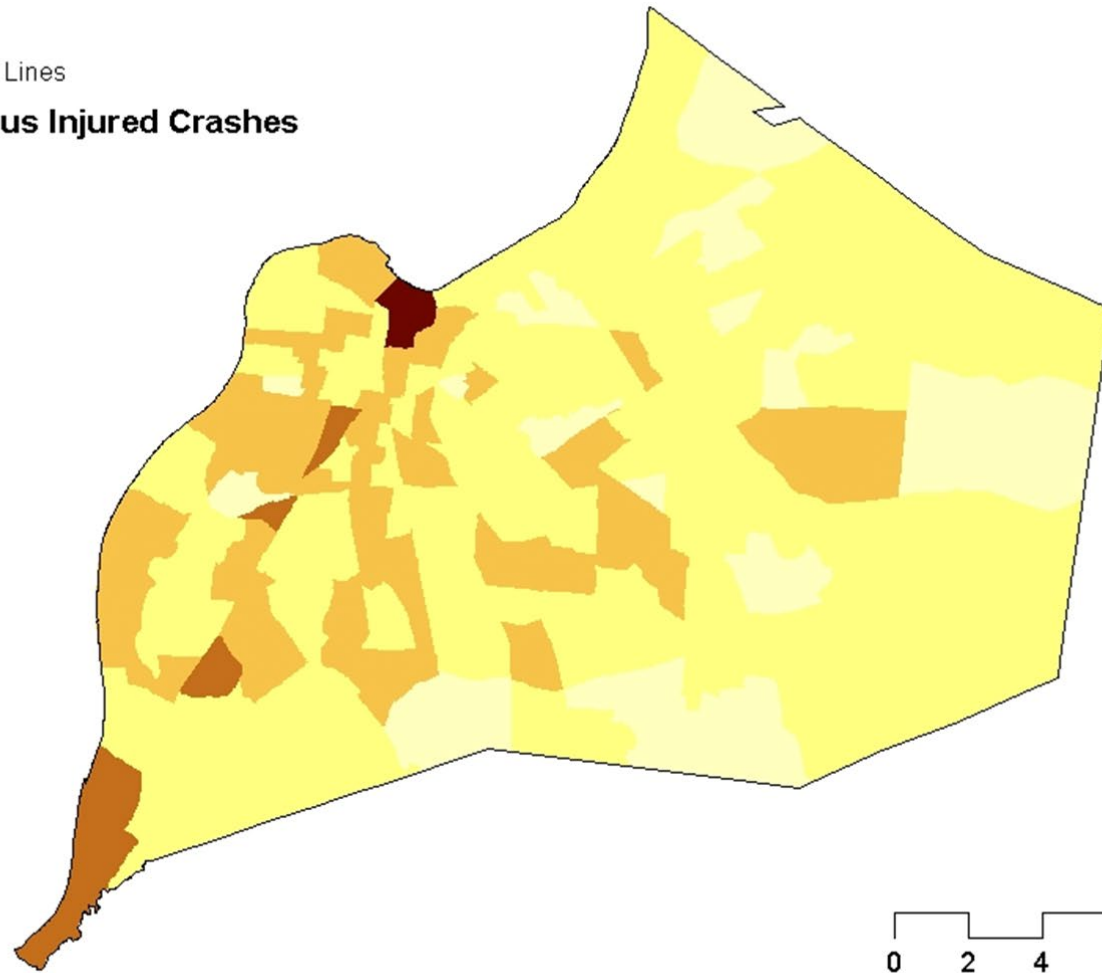


Legend

 County Lines

Fatal/Serious Injured Crashes

-  1 - 5
-  6 - 10
-  11 - 20
-  21 - 41



Complete Streets & Equity

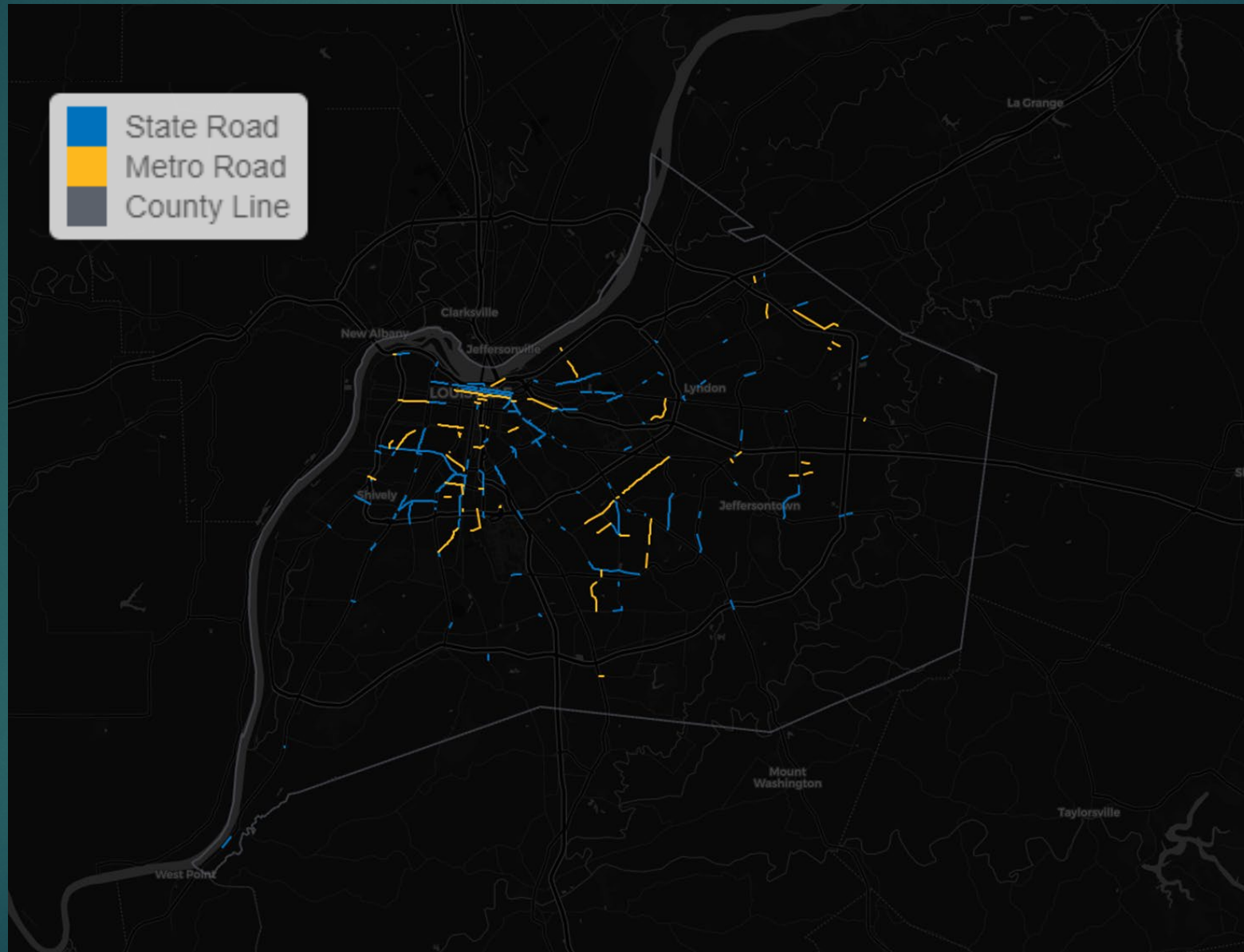


Complete Streets Ordinance – Relevant Points

- ▶ Process to identify & prioritize Complete Streets (CS) opportunities.
- ▶ Community engagement process for implementation of new projects and ongoing communication with residents.
- ▶ Ensure implementation of CS in the LDC processes.
- ▶ Standards for reporting CS progress to the public.
- ▶ Criteria for:
 - ▶ Measuring outcomes of Complete Street applications for public and private improvements.
 - ▶ Ensuring equitable results of CS projects.

Complete Streets Data

▶ Roads that might be eligible for “right sizing.”



Complete Streets Ordinance Edits

- ▶ Brings the Complete Streets Coalition into existence.
- ▶ Allows the CS Coalition to receive funds.
- ▶ Stipulates a diversity requirement:
 - ▶ *“Louisville Metro Council Public Works Committee shall confirm that the members of the committee capture the diversity of Louisville in personhood, professional experience, and viewpoints when confirming committee membership.”*
- ▶ Requires Louisville Metro Government to submit a Complete Streets Checklist for qualified projects:
 - ▶ *“The Complete Streets Coalition shall have the right to affirm that the Complete Streets Checklist, which is produced by the project manager, meets their standards or decide if further changes to the project need to be designed. If the project manager and the Complete Streets Coalition cannot reach agreement, the Director of Public Works shall act as the deciding vote.”*

Complete Streets Coalition

- ▶ Mission: To increase accessibility, coordination, equity, and transparency in the transportation and mobility systems of Louisville Metro Government by leveraging community input.
- ▶ Vision: The Complete Streets Coalition will be a tool for ongoing public input for Public Works, Develop Louisville and all relevant agencies on transportation-related topics. Ultimately the Complete Streets Coalition will allow for a more complete picture of the needs of the public.

Logic Model

Input

Louisville Metro Stakeholders

Community Stakeholders

By-Laws

Meeting Space

Complete Streets Checklist

Activities

Monthly Meetings

Subcommittee Meetings

Direct communication to decision makers & Metro Council

Outputs

Increased Civic Engagement

Increased Coordination

Increased Transparency

Outcomes

Citizens are able to interact more readily with LMG about transportation

Citizens are aware of the strengths and limitations of the Government

CSC members are aware of the causes of death/crashes on city roads

Increased citizen involvement in the transportation planning process

Impacts

More Efficient Implementation of Funds and Resources

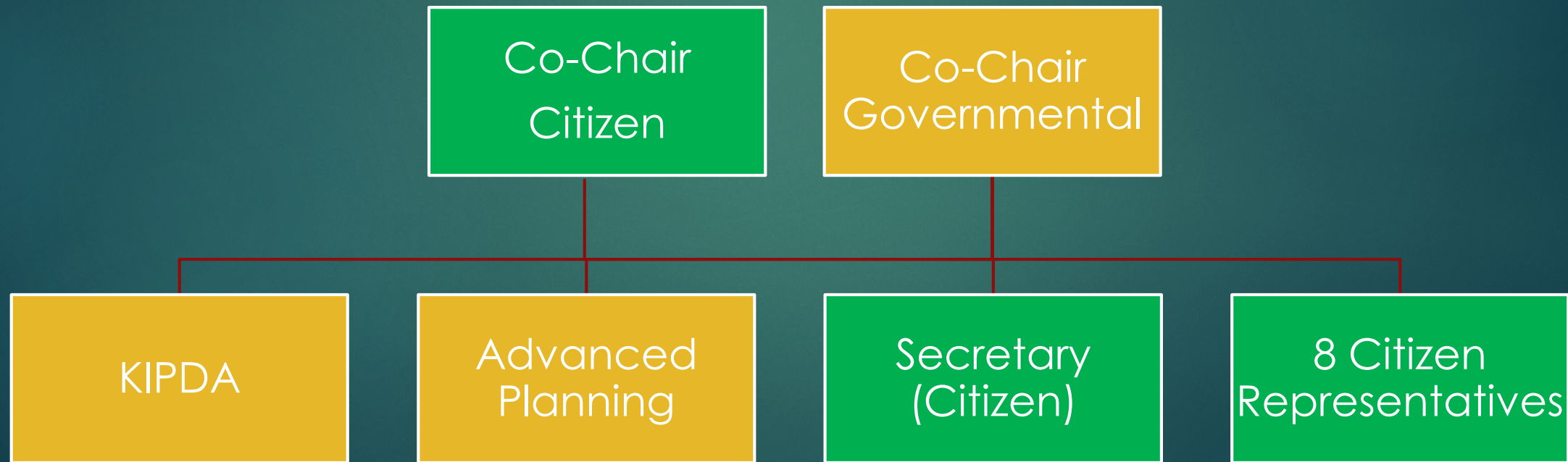
Fewer Deaths on roads in Louisville

By-Laws

- ▶ Most cities of Louisville's size or larger have a Road Safety Committee whose membership includes community organizations, government agencies, and citizens.
- ▶ The By-Laws for the CSC haven't been finalized, but the critical objectives will be to:
 - ▶ Strike a balanced representation from bicycle, pedestrian, and other advocates.
 - ▶ Membership should be strictly limited to ensure the meetings' organization and brevity in order to incentivize subcommittee formation.
 - ▶ Subcommittee formation should be guided by the community's needs and individual citizen members' passion.
 - ▶ Create a system for communicating the will of the committee to Public Works and other decision-makers.
 - ▶ All meetings will be completely open to the public and time should be made for public comment during every meeting.
 - ▶ Outline the governing principles of the meeting (Robert's Rules of Order).

Structure

- ▶ One Public Works employee (the Governmental Co-Chair)
- ▶ One employee from Advanced Planning & Sustainability
- ▶ One employee from KIPDA
- ▶ The remaining 10 members will be Citizen representatives
 - ▶ One will be the Citizen Co-Chair
- ▶ Two Co-Chairs will share equal responsibility in running the committee.

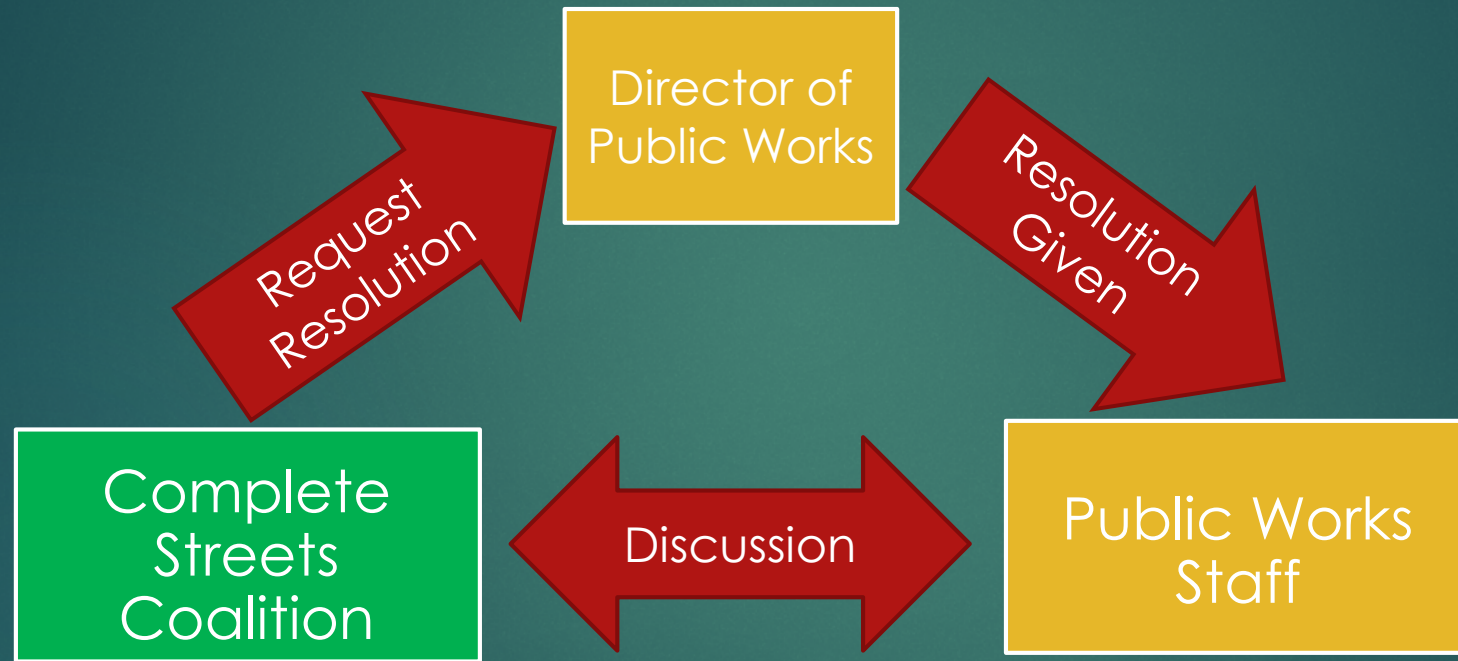


Complete Streets Checklist

- ▶ We are in process of drafting the Complete Streets Checklist primarily using examples from New Jersey and Seattle.
- ▶ Some sections of our draft include:

Section	Brief Description
Financial Feasibility	The best reasonable estimate of the project cost with & without complete streets design elements.
Project Coordination	Does this project intersect with any master plans, neighborhood plans, etc.?
Inaction Analysis	List historic property values, active businesses in the area, list crash data.
Safety Channelization	List 85 th percentile speed, ADT, lanes of traffic, purpose of road.

Complete Streets Checklist



Focus Group

Attendees		
Name	Organization	Title
Nicole George	Metro Council	Councilwoman
Elizabeth Farc	KIPDA	Transportation Planner
Michael Schnuerle	Open Mobility Foundation	Director of Open Source Operations
Mike King	Office of Advanced Planning and Sustainability	Director
Jessica Brown	Center for Neighborhoods	Planning Director
Rachel Casey	Office of Advanced Planning and Sustainability	Urban Planner
Rev. Gerald Joiner	Zion Baptist Church	Pastor
Nathan Keltch	Public Works	Mobility Specialist

Steps toward Implementation

