

Vicinity Map

NOTE:
ALL LOTS ABUTTING THIS ROAD
CLOSURE SHALL BE CONSOLIDATED
WITH THE RESPECTIVE PORTIONS OF
THE ROAD CLOSURE.

LEGEND



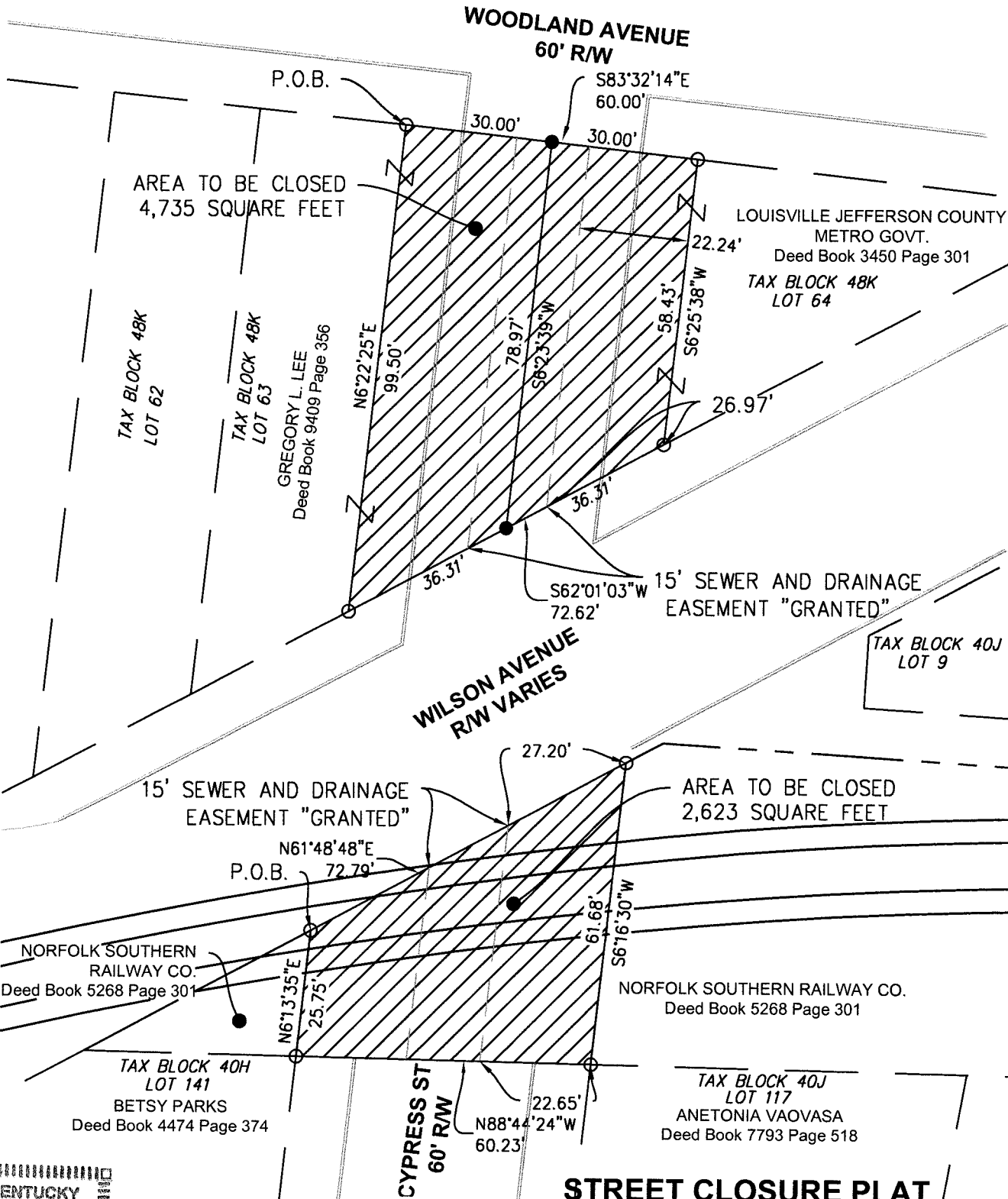
STREET TO BE CLOSED



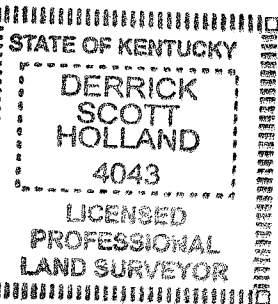
COMPUTED UNMARKED CORNER



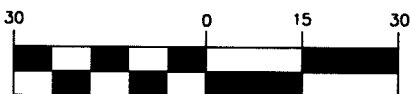
SET MAG NAIL WITH WASHER
STAMPED "HOLLAND 4043"



North and all bearings shown hereon are based on
grid north of the KY state plane coordinate system,
single zone (NAD 83) as established by GPS



GRAPHIC SCALE



(IN FEET)
1 inch = 30 ft.

LAND SURVEYOR'S CERTIFICATE

I hereby certify that this Road Closure Plat and survey were made under my supervision, and that the angular and linear measurements as witnessed by monuments shown hereon are true and correct to the best of my knowledge and belief. This survey does not represent a boundary survey and is not intended for land transfer.

Derrick Scott Holland
Derrick Scott Holland PLS #4043

February 25, 2016

Date:

STREET CLOSURE PLAT

Site Information

Two portions of Cypress St. between Woodland Ave. & Standard Ave.
Louisville, Jefferson County, Kentucky

APPLICANT

Louisville & Jefferson County Metro Government
444 South 5th Street
Louisville, Kentucky 40202

Zoning: R6 / Form District: Traditional Neighborhood

PROPOSED USE: Additional side yard & additional railroad right of way

NOTE:

RELATED CASE (PLAT BOOK 2 PAGE 57)

BTM ENGINEERING, INC.

Consulting Engineers Landscape Architects Planners
3001 Taylor Springs Drive
Louisville, Kentucky 40220
(502) 459-8402



Date: 8-20-2014 Project No. 140248 Scale : 1"= 30' Sheet 1 of 1

11157028.PLS1119