



LOUISVILLE METRO GOVERNMENT

2022-2023

RECOMMENDED DETAIL BUDGET

MAYOR GREG FISCHER















MAYOR GREG FISCHER'S RECOMMENDED BUDGET FY22-23 BY THE NUMBERS

Overall budget increase:	\$1.1B	➔	\$1.3B
General fund revenue increase:	\$658M	➔	\$715M
Capital budget increase:	\$167M	➔	\$343M



MAYOR GREG FISCHER'S RECOMMENDED BUDGET FY22-23

LOUISVILLE'S CORE VALUES

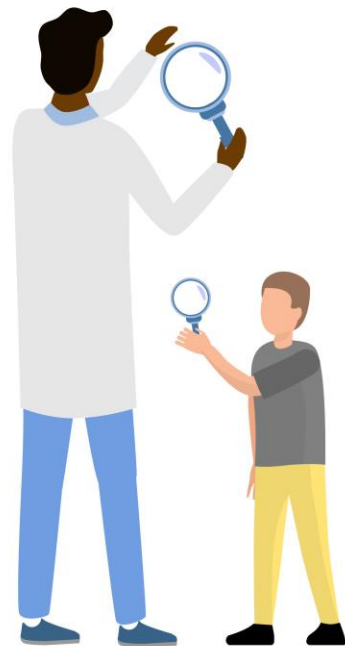
HEALTH



COMPASSION



LIFELONG
LEARNING









IT STARTS HERE
Crazier

BOURBON & BARRELS





Go the down-town loop!
METRO BANK
HEP

MUTH'S
CANDIES

harvest





MAYOR GREG FISCHER'S RECOMMENDED BUDGET FY22-23

LOUISVILLE'S CORE VALUES

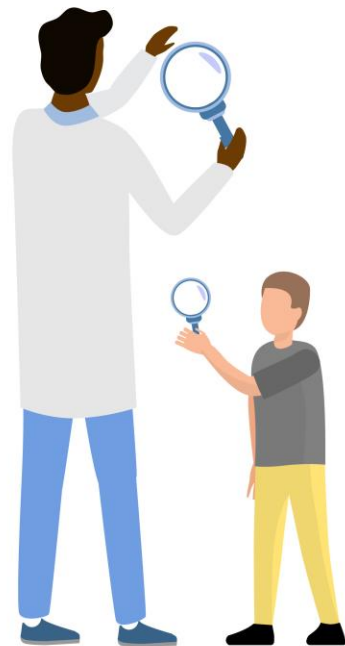
HEALTH



COMPASSION



LIFELONG
LEARNING







CRIME: YEAR-TO-DATE BY THE NUMBERS



35%

**Decrease in
shootings**



15%

**Decrease in
violent crime**



8%

**Decrease in
overall crime**



MAYOR GREG FISCHER'S RECOMMENDED BUDGET FY22-23

LOUISVILLE'S CORE VALUES

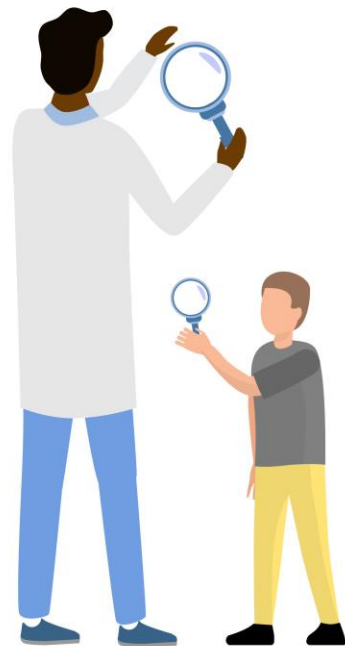
HEALTH



COMPASSION



LIFELONG
LEARNING







we can
end gun
violence
wearorange.org





BRING ON THE

LOU



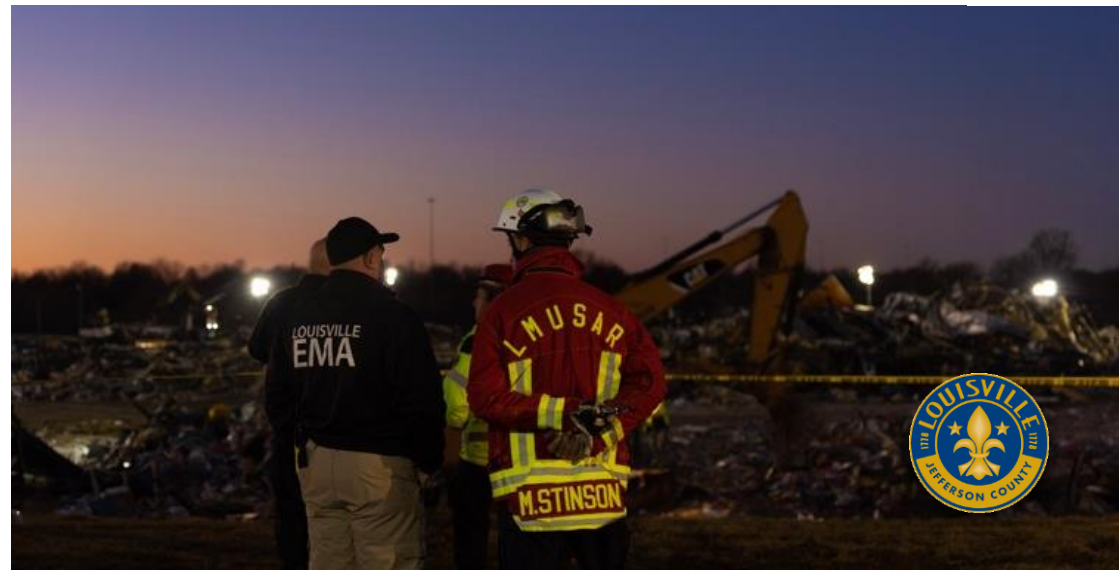


CLEAN COLLABORATIVE







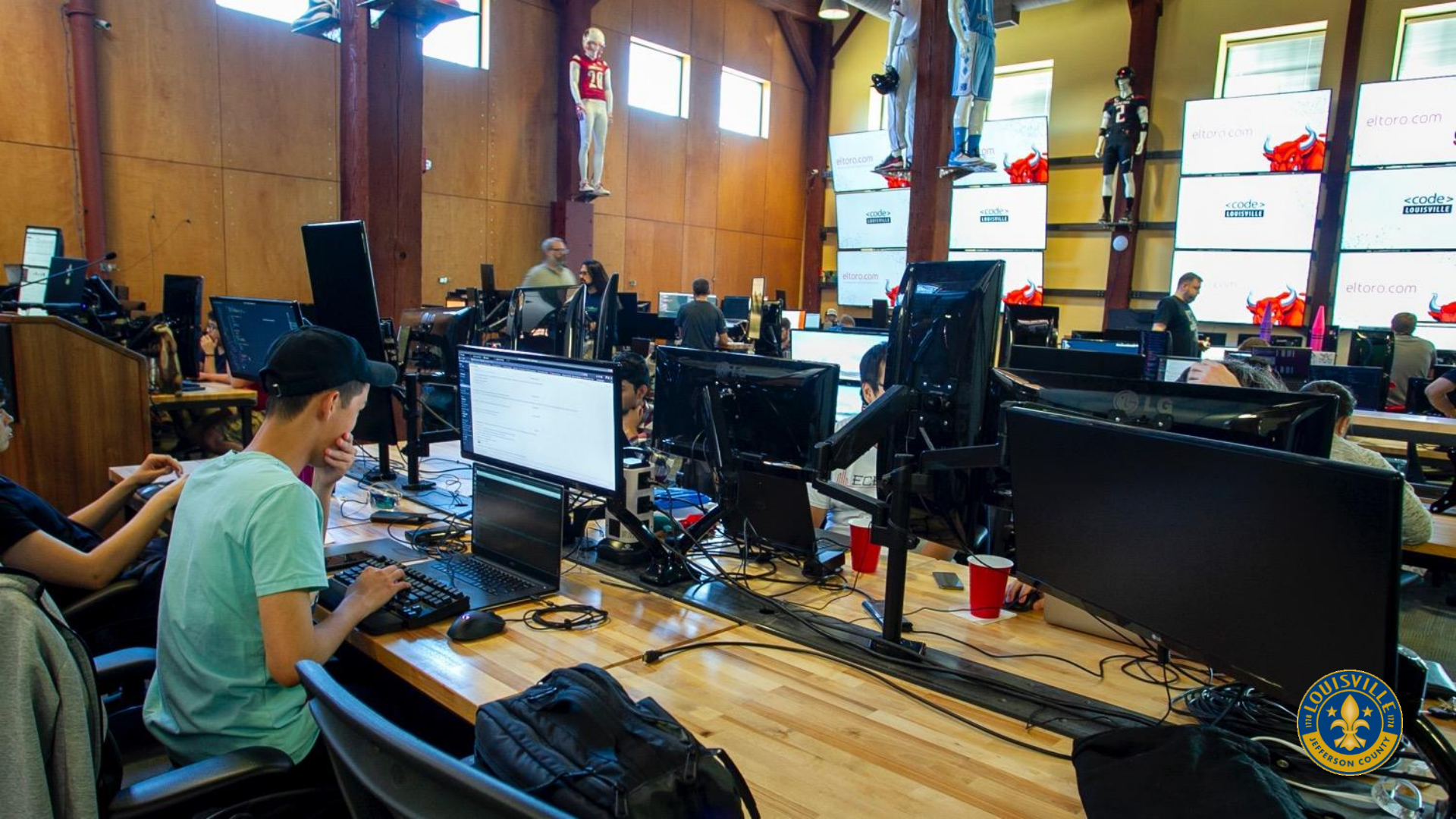






SUMMER
WORKS









MONARCHS & MILKWEED

Pollinator Habitat Project



theZOO
LOUISVILLE



SAFE
SAVING ANIMALS
FROM EXTINCTION

ASSOCIATION
OF ZOOS &
AQUARIUMS

MONARCH WAYSTATION



This site provides milkweeds, nectar sources,
and other resources for monarch butterflies.





WATER
FRONT
PARK
PHASE 4

WATER
FRONT
PARK
PHASE 4









MAYOR GREG FISCHER'S RECOMMENDED BUDGET FY22-23

LOUISVILLE'S CORE VALUES

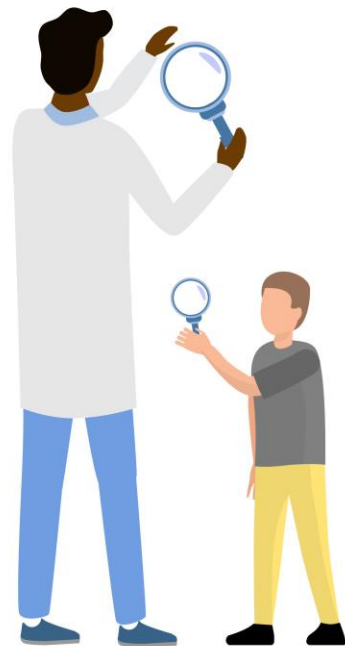
HEALTH



COMPASSION



LIFELONG
LEARNING











A man in a light blue dress shirt and a dark red tie is speaking at a podium. He is pointing his right index finger towards the camera. The podium has a microphone in front of him. The background shows a residential construction site with houses under construction and trees.





MAYOR GREG FISCHER'S RECOMMENDED BUDGET FY22-23

LOUISVILLE'S CORE VALUES

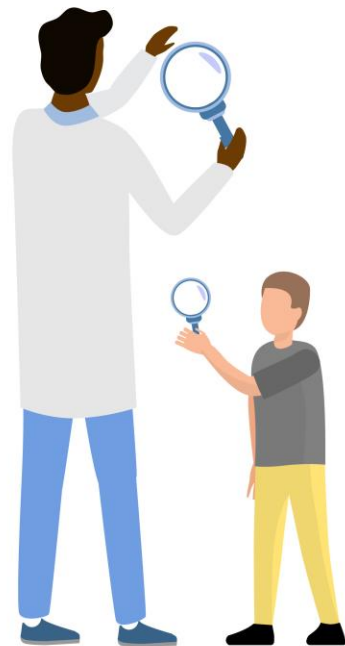
HEALTH



COMPASSION



LIFELONG
LEARNING







MAYOR GREG FISCHER'S RECOMMENDED BUDGET FY22-23

LOUISVILLE'S CORE VALUES

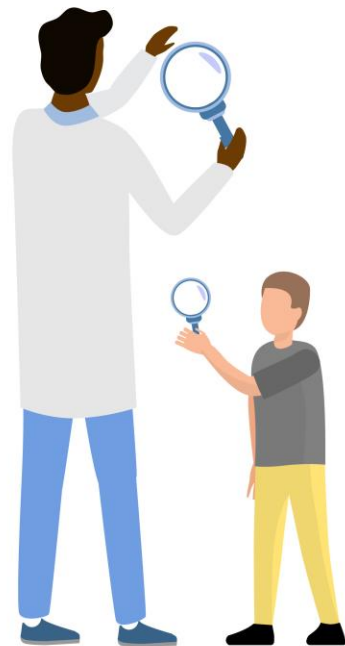
HEALTH



COMPASSION



LIFELONG
LEARNING



METROSAFE



"Protecting you
and your city"
Here for you in
the dark



WE REMEMBER

Nicholas Rodman
Zachary Cottongim
Trent Haines
Deidre Mengedoht
Larry Kizer
Hassan Hassan

Timothy Groft
John Martin
Thomas Talley
Martez Hughes
Richard Longoria
Dr. SarahBeth Hartlage

MAYOR GREG FISCHER'S RECOMMENDED BUDGET FY22-23





MAYOR GREG FISCHER'S RECOMMENDED BUDGET FY22-23

LOUISVILLE'S CORE VALUES

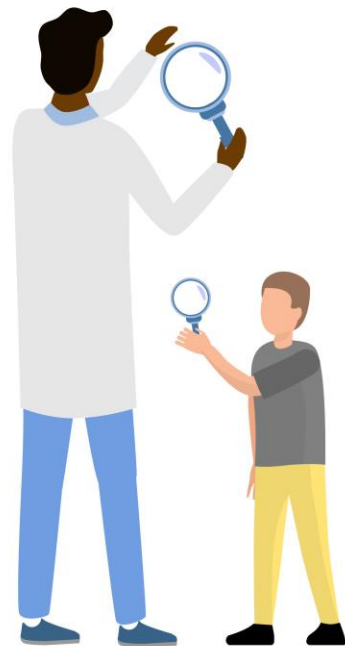
HEALTH



COMPASSION



LIFELONG
LEARNING







MAYOR GREG FISCHER'S RECOMMENDED BUDGET FY22-23

LOUISVILLE'S CORE VALUES

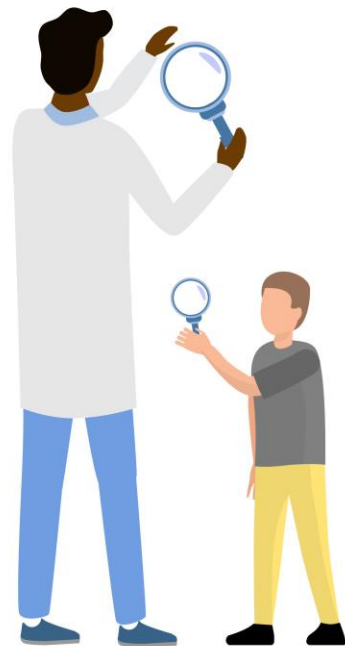
HEALTH



COMPASSION



LIFELONG
LEARNING





LOUISVILLE METRO GOVERNMENT

2022-2023

RECOMMENDED DETAIL BUDGET

MAYOR GREG FISCHER

