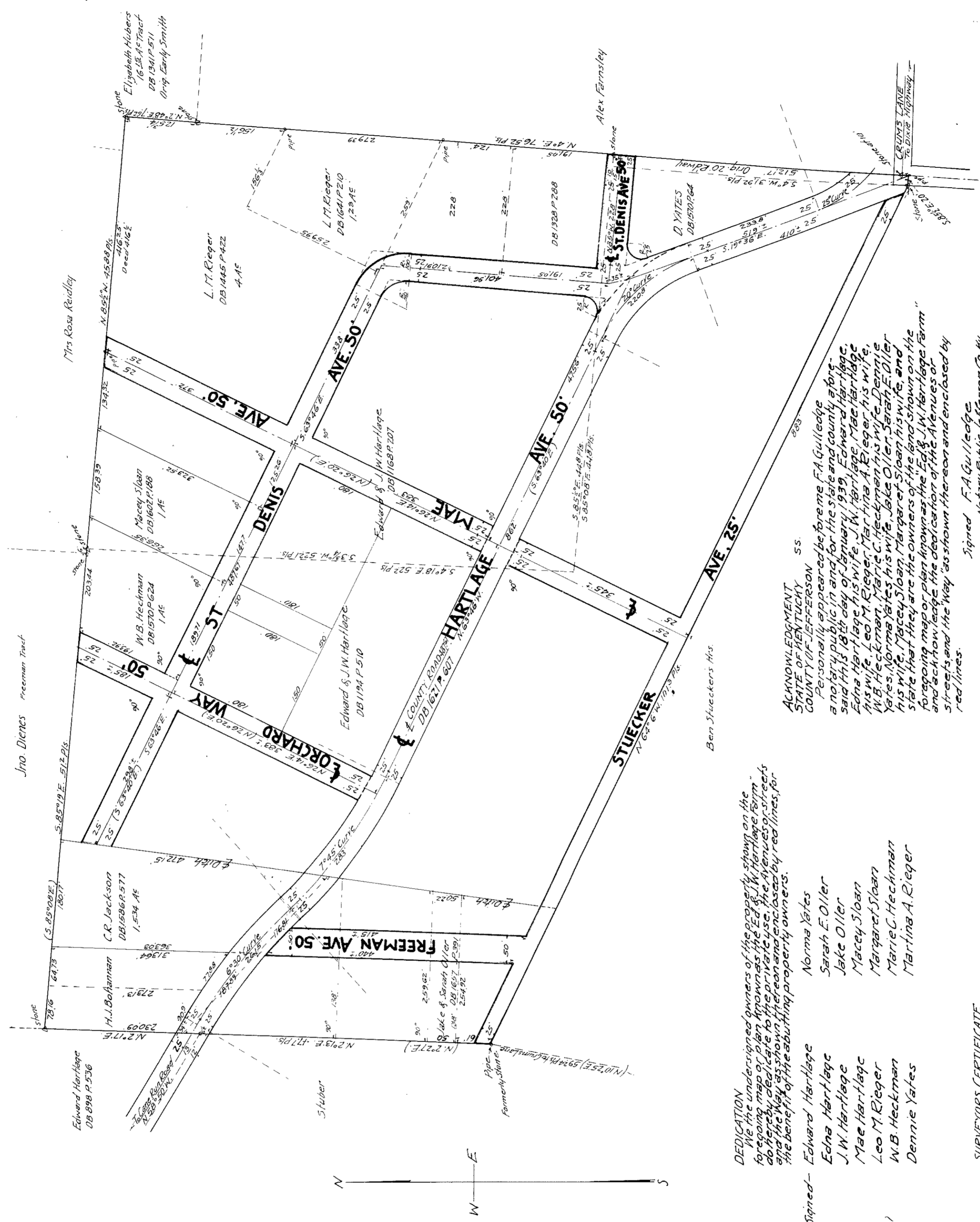


THE ED. & J.W. HARTLAGE FARM

NEAR SHIVELY
JEFFERSON COUNTY, KY.

DEDICATION PLAN
Scale 1"=100'
Dec. 9-1938.
Rodgers & Rodgers Inc. Engineers & Surveyors
Realty Bldg.
Louisville, Ky.



DEDICATION
We the undersigned owners of the property shown on the
plan hereto, do hereby dedicate to the public use, the Avenues or streets
and the Way as shown hereon and enclosed by red lines, for
the benefit of the abutting property owners.

Signed- Edward Hartlage
Edna Hartlage
J.W. Hartlage
Mae Hartlage
Leo M. Rieger
W.B. Heckman
Dennie Yates

ACKNOWLEDGMENT
STATE OF KENTUCKY
COUNTY OF JEFFERSON SS.
I, F.A. GULLOGE, Notary Public for the State of Kentucky, do hereby certify that on the 9th day of December, 1938, Edward Hartlage, Edna Hartlage, J.W. Hartlage, Mae Hartlage, Leo M. Rieger, W.B. Heckman, Dennie Yates, and Macey Sloan, the owners of the land shown on the foregoing map or plan known as the Ed. & J.W. Hartlage Farm and shown on the dedication of the Avenues or streets and the Way as shown hereon and enclosed by red lines.

Signed F.A. GULLOGE
Notary Public for Jefferson Co. Ky.
My Commission
expires July 16, 1940.



SURVEYORS CERTIFICATE
I hereby certify that the survey for this plan was
made by me and that the angular and linear meas-
urements shown hereon are correct to the best
of my knowledge and belief.
W. C. THORNTON
Surveyor

I, C. P. THORNTON, Clerk of the County Court of Jefferson County, in the State of Kentucky, do hereby certify that this is a true and correct copy of the original map or plan as filed in my office, and that I have recorded it, this, and the foregoing certificate in my said office.
Witness my hand this 11th day of January, 1939.
C. P. THORNTON
Clerk

