

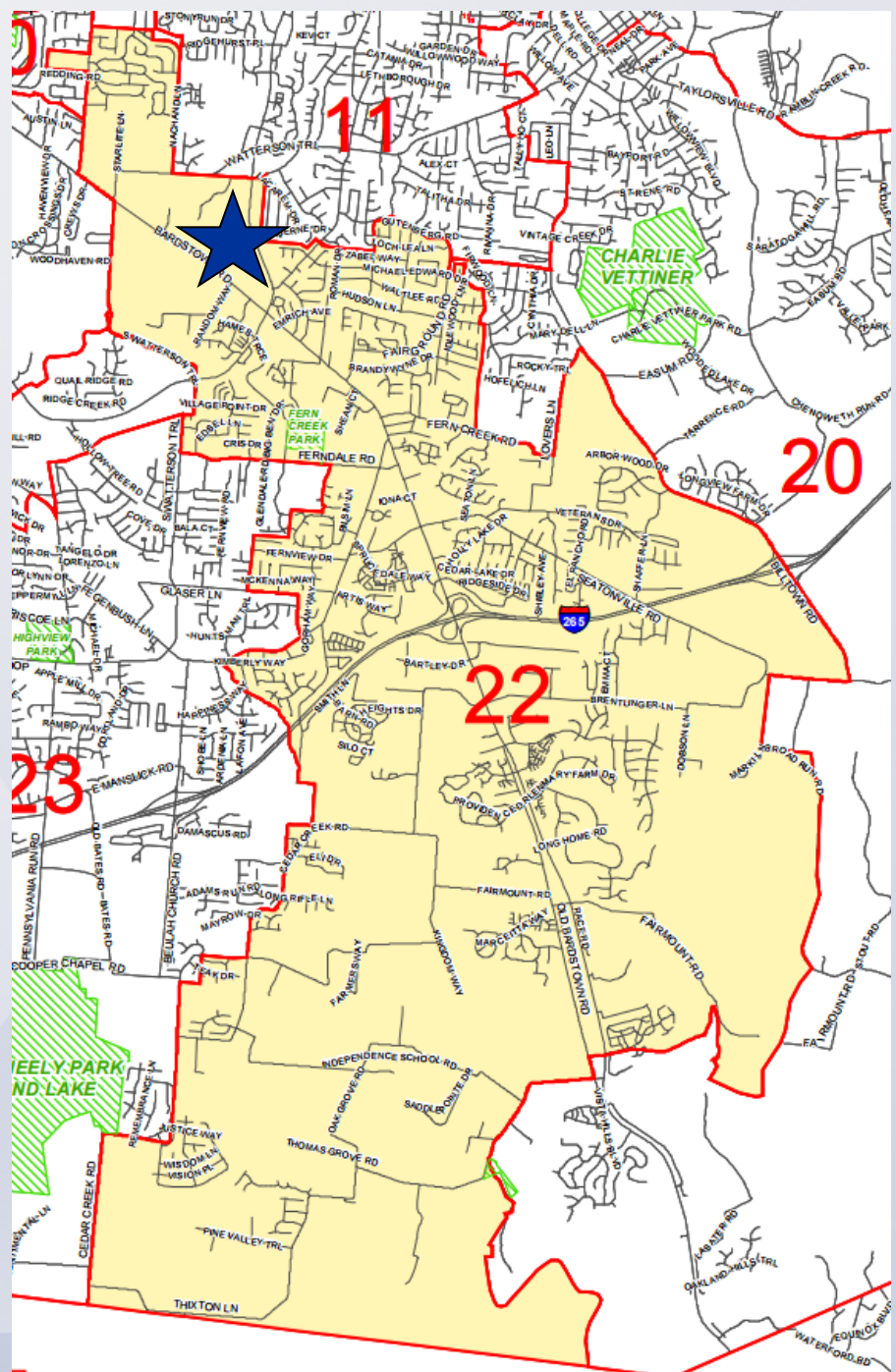
16ZONE1089

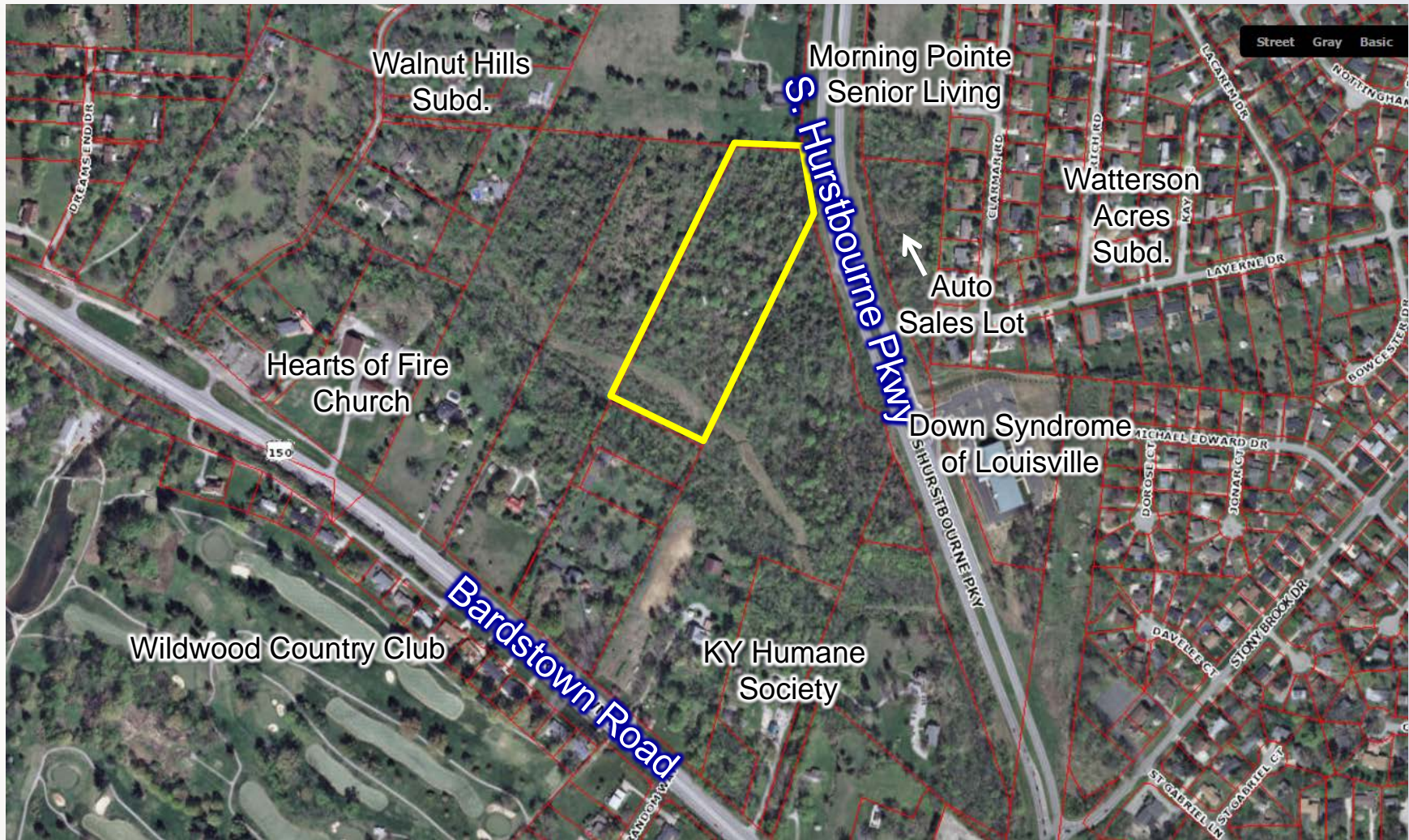
Hurstbourne Mini-storage

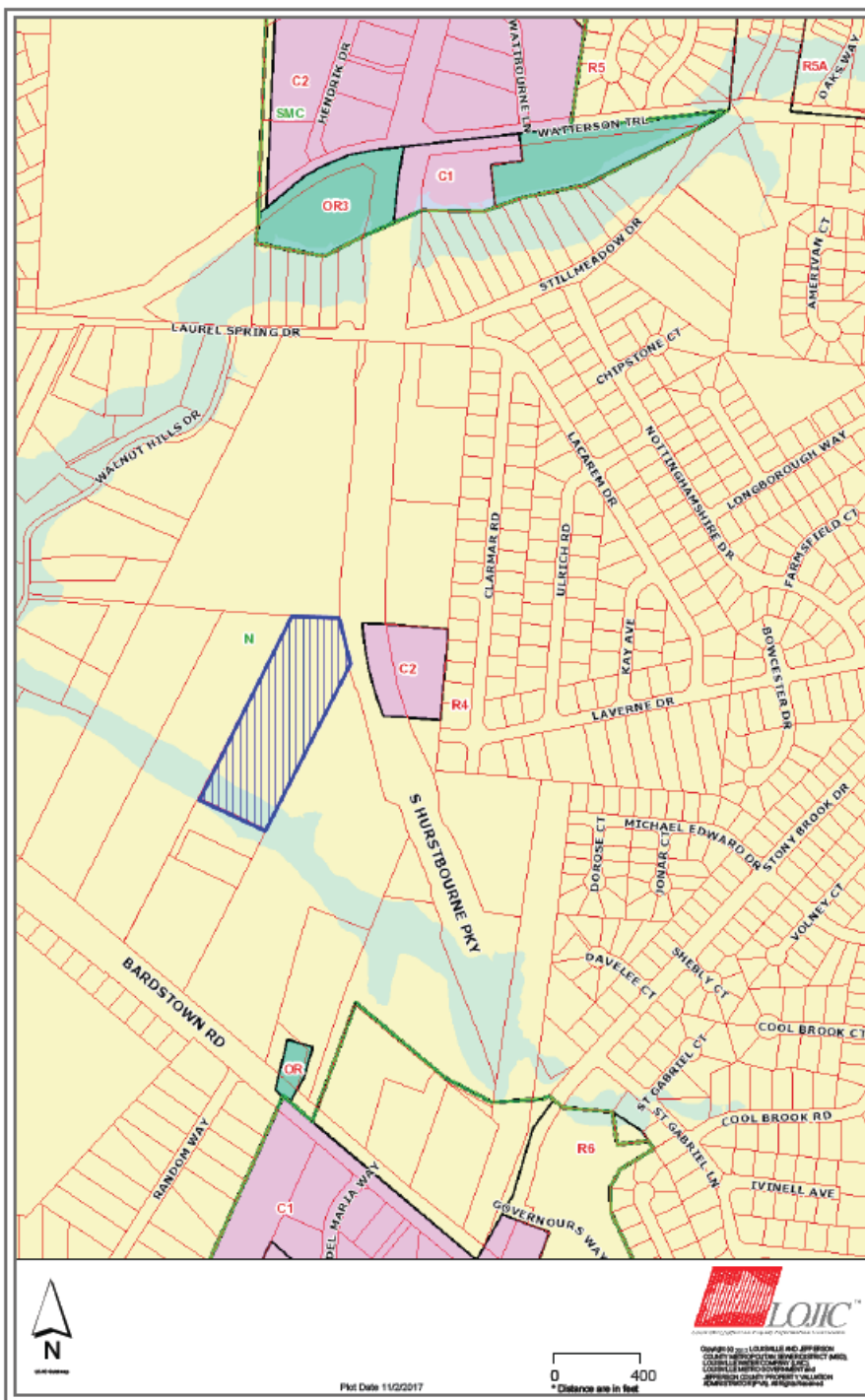


Planning/Zoning, Land Design & Development
January 30, 2018

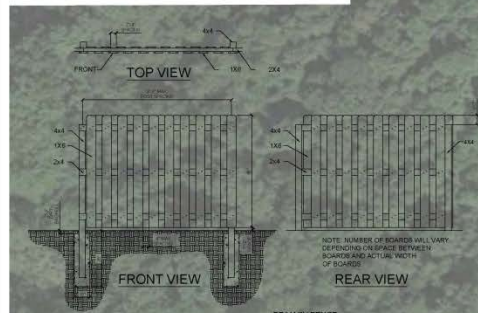
4900 S Hurstbourne Pkwy
District 22 – Robin Engel

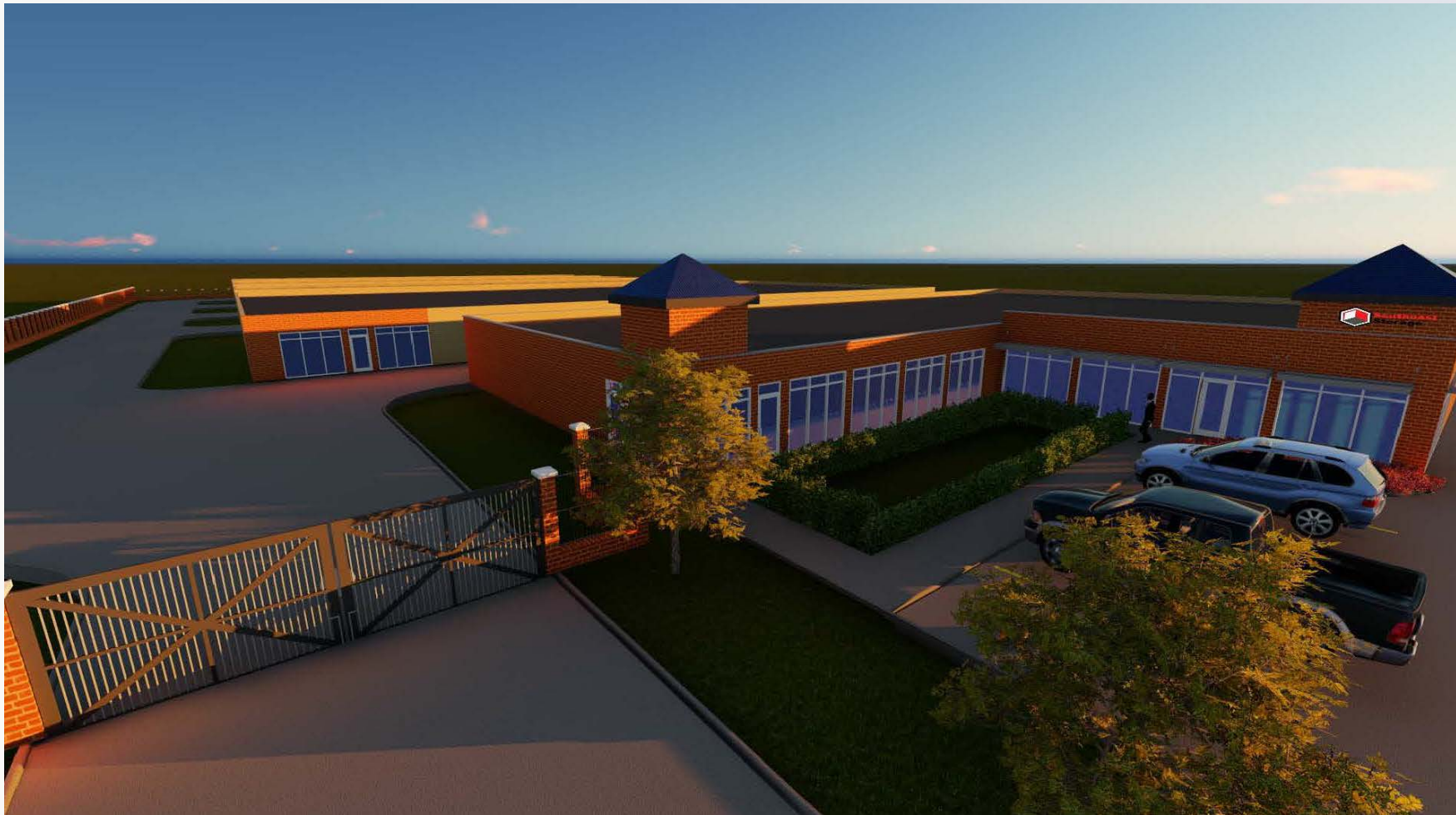






Copyright © 2017 LOUISVILLE METRO GOVERNMENT
 LOUISVILLE METRO GOVERNMENT
 LOUISVILLE METRO GOVERNMENT
 LOUISVILLE METRO GOVERNMENT
 LOUISVILLE METRO GOVERNMENT







Public Meetings

- Neighborhood Meeting on 01/17/17 and 05/30/17
 - Held by applicant
- LD&T meeting on 11/09/17
- Planning Commission public hearing on 12/07/2017

Planning Commission

- Planning Commission public hearing on 12/07/2017
 - No one spoke in opposition.
 - The Commission recommended approval of the change in zoning with a vote of 6-1. 3 members were not present.