

RECEIVED

JAN 12 2018

PLANNING & DESIGN SERVICES



ALBERT + ASSOCIATES
ARCHITECTURE

118 Constitution Street Lexington, KY 859.252.0044

Unnamed
Park Hills
Louisville, Kentucky

A0.4
11/12/2017

17 ZONE 1069

RECEIVED

JAN 12 2018

PLANNING & DESIGN SERVICES



1 1BR 14 Unit Elevation

1

ALBERT + ASSOCIATES
ARCHITECTURE

118 Constitution Street Lexington, KY 859.252.0044

Elevation
Park Hills
Louisville, Kentucky

A0.1
11/12/2017

1069

ZONE

17

RECEIVED

JAN 12 2018

PLANNING & DESIGN SERVICES

ALBERT + ASSOCIATES
ARCHITECTURE

118 Constitution Street Lexington, KY 859.252.0044

Elevation
Park Hills
Louisville, Kentucky

A0.2
11/12/2017

17 ZONE 1069



1BR 14 Unit Elevation

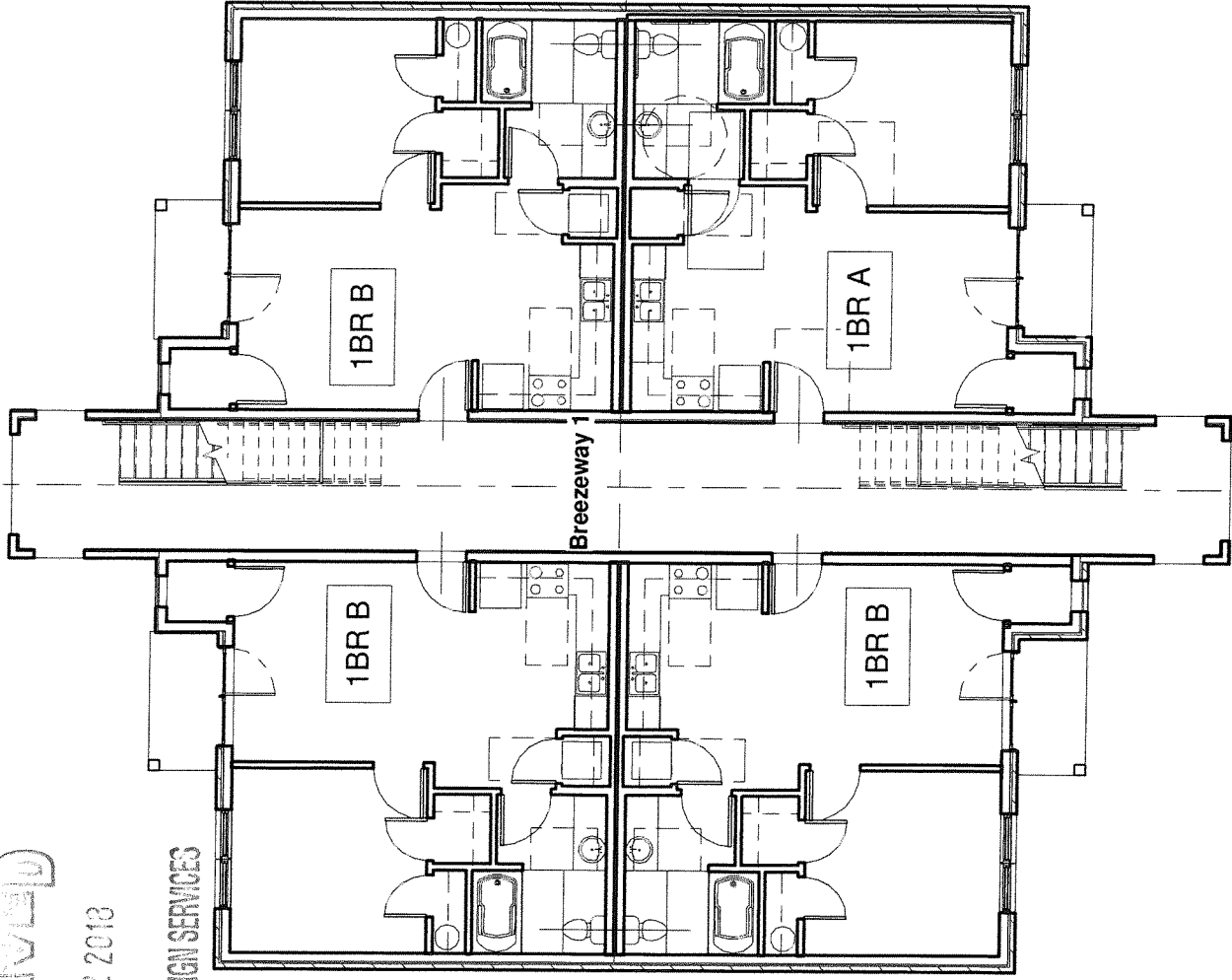
1

1/8" = 1'-0"

RECEIVED

JAN 12 2018

PLANNING & DESIGN SERVICES



1 First Floor Plan

1

3/32" = 1'-0"

ALBERT + ASSOCIATES
ARCHITECTURE

118 Constitution Street Lexington, KY 859.252.0044

First Floor Plan
Park Hills
Louisville, Kentucky

A0.3

11/12/2017

17 ZONE 1069

RECEIVED

JAN 12 2018

PLANNING & DESIGN SERVICES



2BR 14 Unit

1

A0.1
11/2/2017

17 ZONE 1069

Elevation
Park Hills
Louisville, KY

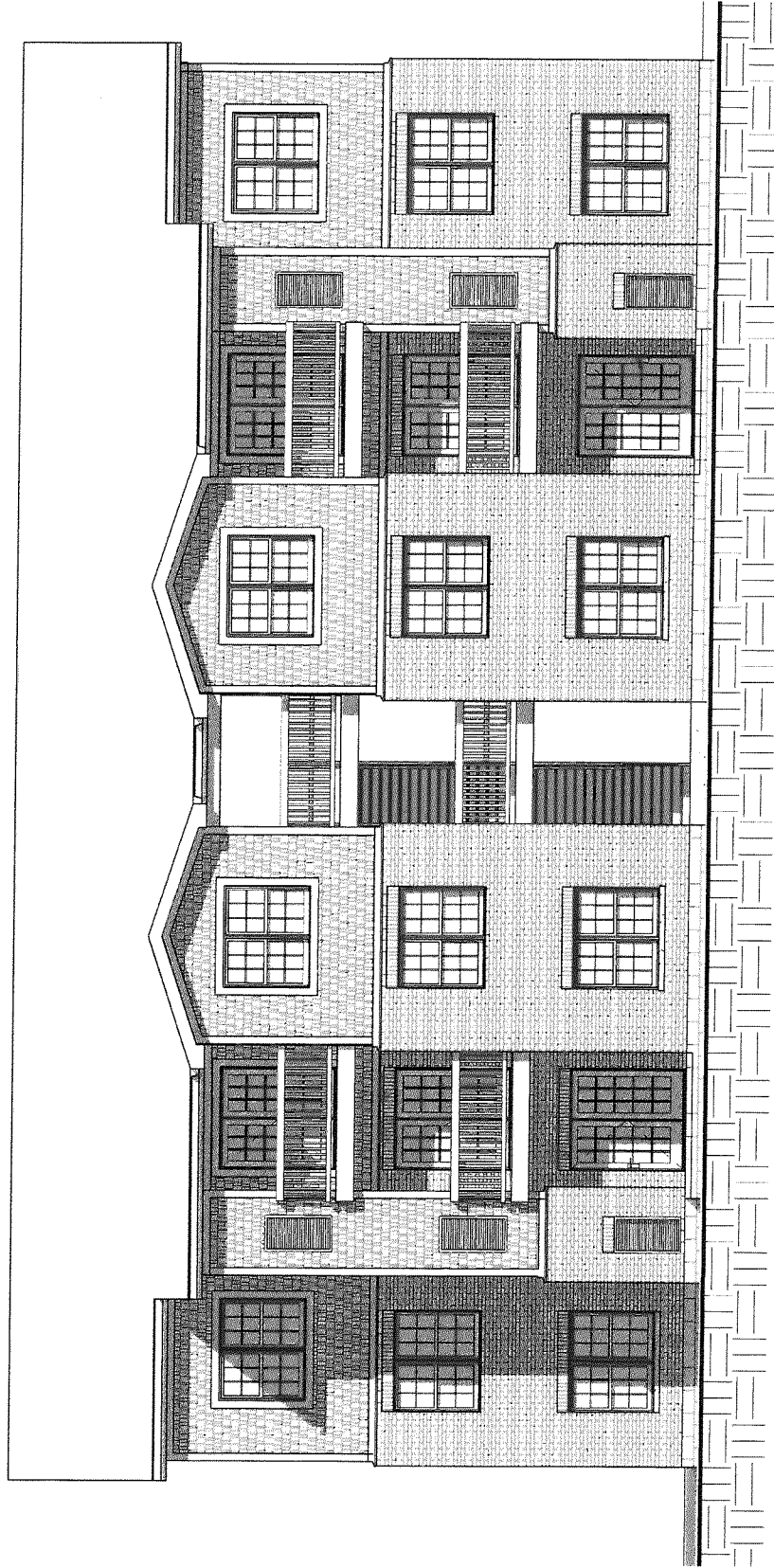
ALBERT + ASSOCIATES
ARCHITECTURE
118 Constitution Street Lexington, KY 859.252.0044



RECEIVED

JAN 12 2018

PLANNING & DESIGN SERVICES



Elevation

1

1" = 10'-0"

ALBERT + ASSOCIATES
ARCHITECTURE

118 Constitution Street Lexington, KY 859.252.0044

Louisville, KY

Park Hills

Elevation

A0.2

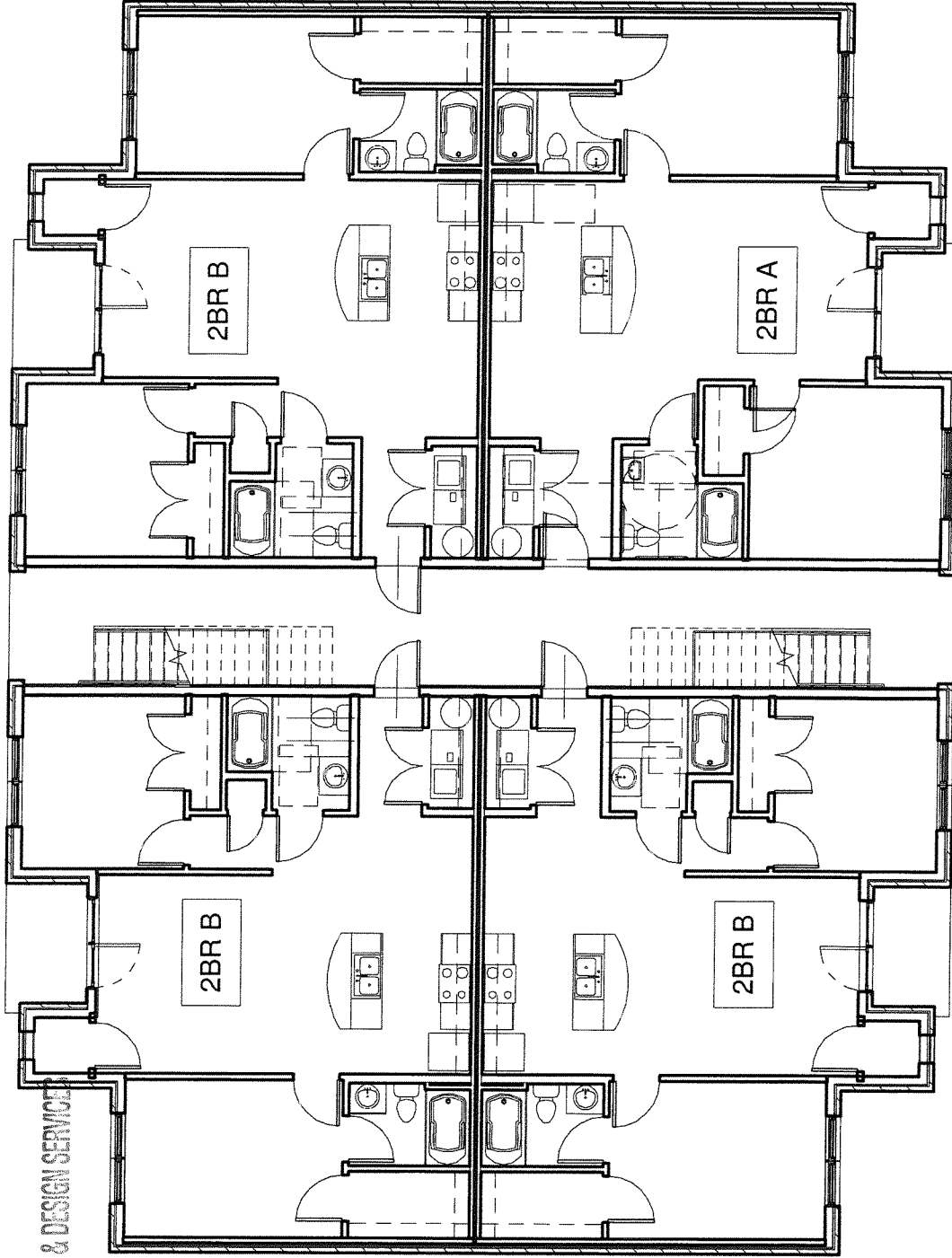
11/12/2017

17 ZONE 1069

RECEIVED

JAN 12 2018

PLANNING & DESIGN SERVICES



1 First Floor Plan

1

3/32" = 1'-0"

A0.3

11/12/2017

First Floor Plan

Park Hills
Louisville, KY

ALBERT + ASSOCIATES
ARCHITECTURE
118 Constitution Street Lexington, KY 859.2520044

17 ZONE 1069