

NOTES:

1. ALL DIMENSIONS ARE TO FACE UNLESS OTHERWISE NOTED.
2. ALL MATERIALS SHALL BE APPROVED BY THE ARCHITECT.
3. ALL MATERIALS SHALL BE APPROVED BY THE ARCHITECT.
4. ALL MATERIALS SHALL BE APPROVED BY THE ARCHITECT.
5. ALL MATERIALS SHALL BE APPROVED BY THE ARCHITECT.
6. ALL MATERIALS SHALL BE APPROVED BY THE ARCHITECT.
7. ALL MATERIALS SHALL BE APPROVED BY THE ARCHITECT.
8. ALL MATERIALS SHALL BE APPROVED BY THE ARCHITECT.
9. ALL MATERIALS SHALL BE APPROVED BY THE ARCHITECT.
10. ALL MATERIALS SHALL BE APPROVED BY THE ARCHITECT.
11. ALL MATERIALS SHALL BE APPROVED BY THE ARCHITECT.
12. ALL MATERIALS SHALL BE APPROVED BY THE ARCHITECT.
13. ALL MATERIALS SHALL BE APPROVED BY THE ARCHITECT.
14. ALL MATERIALS SHALL BE APPROVED BY THE ARCHITECT.
15. ALL MATERIALS SHALL BE APPROVED BY THE ARCHITECT.
16. ALL MATERIALS SHALL BE APPROVED BY THE ARCHITECT.
17. ALL MATERIALS SHALL BE APPROVED BY THE ARCHITECT.
18. ALL MATERIALS SHALL BE APPROVED BY THE ARCHITECT.
19. ALL MATERIALS SHALL BE APPROVED BY THE ARCHITECT.
20. ALL MATERIALS SHALL BE APPROVED BY THE ARCHITECT.
21. ALL MATERIALS SHALL BE APPROVED BY THE ARCHITECT.
22. ALL MATERIALS SHALL BE APPROVED BY THE ARCHITECT.
23. ALL MATERIALS SHALL BE APPROVED BY THE ARCHITECT.
24. ALL MATERIALS SHALL BE APPROVED BY THE ARCHITECT.
25. ALL MATERIALS SHALL BE APPROVED BY THE ARCHITECT.
26. ALL MATERIALS SHALL BE APPROVED BY THE ARCHITECT.
27. ALL MATERIALS SHALL BE APPROVED BY THE ARCHITECT.
28. ALL MATERIALS SHALL BE APPROVED BY THE ARCHITECT.
29. ALL MATERIALS SHALL BE APPROVED BY THE ARCHITECT.
30. ALL MATERIALS SHALL BE APPROVED BY THE ARCHITECT.
31. ALL MATERIALS SHALL BE APPROVED BY THE ARCHITECT.
32. ALL MATERIALS SHALL BE APPROVED BY THE ARCHITECT.
33. ALL MATERIALS SHALL BE APPROVED BY THE ARCHITECT.

EXTERIOR FINISH SCHEDULE

NO.	DESCRIPTION	FINISH
1	CONCRETE	CONCRETE
2	BRICK	BRICK
3	GLASS	GLASS
4	WOOD	WOOD
5	STEEL	STEEL
6	PAINT	PAINT
7	ROOFING	ROOFING
8	MECHANICAL	MECHANICAL
9	ELECTRICAL	ELECTRICAL
10	PLUMBING	PLUMBING
11	MECHANICAL	MECHANICAL
12	ELECTRICAL	ELECTRICAL
13	PLUMBING	PLUMBING
14	MECHANICAL	MECHANICAL
15	ELECTRICAL	ELECTRICAL
16	PLUMBING	PLUMBING
17	MECHANICAL	MECHANICAL
18	ELECTRICAL	ELECTRICAL
19	PLUMBING	PLUMBING
20	MECHANICAL	MECHANICAL
21	ELECTRICAL	ELECTRICAL
22	PLUMBING	PLUMBING
23	MECHANICAL	MECHANICAL
24	ELECTRICAL	ELECTRICAL
25	PLUMBING	PLUMBING
26	MECHANICAL	MECHANICAL
27	ELECTRICAL	ELECTRICAL
28	PLUMBING	PLUMBING
29	MECHANICAL	MECHANICAL
30	ELECTRICAL	ELECTRICAL
31	PLUMBING	PLUMBING
32	MECHANICAL	MECHANICAL
33	ELECTRICAL	ELECTRICAL
34	PLUMBING	PLUMBING
35	MECHANICAL	MECHANICAL
36	ELECTRICAL	ELECTRICAL
37	PLUMBING	PLUMBING
38	MECHANICAL	MECHANICAL
39	ELECTRICAL	ELECTRICAL
40	PLUMBING	PLUMBING
41	MECHANICAL	MECHANICAL
42	ELECTRICAL	ELECTRICAL
43	PLUMBING	PLUMBING
44	MECHANICAL	MECHANICAL
45	ELECTRICAL	ELECTRICAL
46	PLUMBING	PLUMBING
47	MECHANICAL	MECHANICAL
48	ELECTRICAL	ELECTRICAL
49	PLUMBING	PLUMBING
50	MECHANICAL	MECHANICAL
51	ELECTRICAL	ELECTRICAL
52	PLUMBING	PLUMBING
53	MECHANICAL	MECHANICAL
54	ELECTRICAL	ELECTRICAL
55	PLUMBING	PLUMBING
56	MECHANICAL	MECHANICAL
57	ELECTRICAL	ELECTRICAL
58	PLUMBING	PLUMBING
59	MECHANICAL	MECHANICAL
60	ELECTRICAL	ELECTRICAL
61	PLUMBING	PLUMBING
62	MECHANICAL	MECHANICAL
63	ELECTRICAL	ELECTRICAL
64	PLUMBING	PLUMBING
65	MECHANICAL	MECHANICAL
66	ELECTRICAL	ELECTRICAL
67	PLUMBING	PLUMBING
68	MECHANICAL	MECHANICAL
69	ELECTRICAL	ELECTRICAL
70	PLUMBING	PLUMBING
71	MECHANICAL	MECHANICAL
72	ELECTRICAL	ELECTRICAL
73	PLUMBING	PLUMBING
74	MECHANICAL	MECHANICAL
75	ELECTRICAL	ELECTRICAL
76	PLUMBING	PLUMBING
77	MECHANICAL	MECHANICAL
78	ELECTRICAL	ELECTRICAL
79	PLUMBING	PLUMBING
80	MECHANICAL	MECHANICAL
81	ELECTRICAL	ELECTRICAL
82	PLUMBING	PLUMBING
83	MECHANICAL	MECHANICAL
84	ELECTRICAL	ELECTRICAL
85	PLUMBING	PLUMBING
86	MECHANICAL	MECHANICAL
87	ELECTRICAL	ELECTRICAL
88	PLUMBING	PLUMBING
89	MECHANICAL	MECHANICAL
90	ELECTRICAL	ELECTRICAL
91	PLUMBING	PLUMBING
92	MECHANICAL	MECHANICAL
93	ELECTRICAL	ELECTRICAL
94	PLUMBING	PLUMBING
95	MECHANICAL	MECHANICAL
96	ELECTRICAL	ELECTRICAL
97	PLUMBING	PLUMBING
98	MECHANICAL	MECHANICAL
99	ELECTRICAL	ELECTRICAL
100	PLUMBING	PLUMBING

RECEIVED
 SEP 01 2017
 DESIGN SERVICES

FRCH |
 DESIGN WORKSPACE
 3111 Elm Street, Suite 800
 Cincinnati, OH 45202
 513.241.3300
 www.frch.com

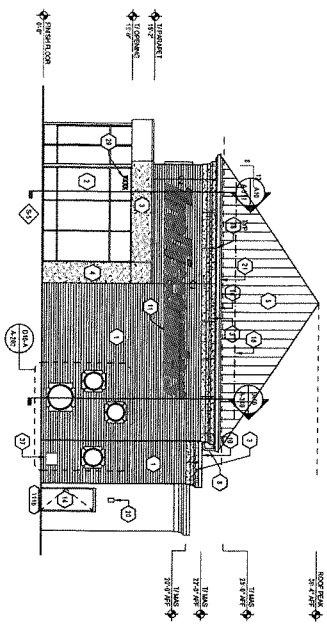
TireDiscounters

ISSUE INFORMATION
 Issue Date: xx.xx.xx
 REVISIONS

PROJECT INFORMATION
 Project Name: C
 Location: Louisville, KY

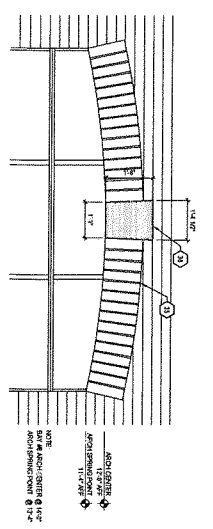
FRCH / ARCHITECTURE, INC. P.C.
 1234 5th St.
 Louisville, KY 40202

SHEET INFORMATION
 Exterior Elevations
 A-201

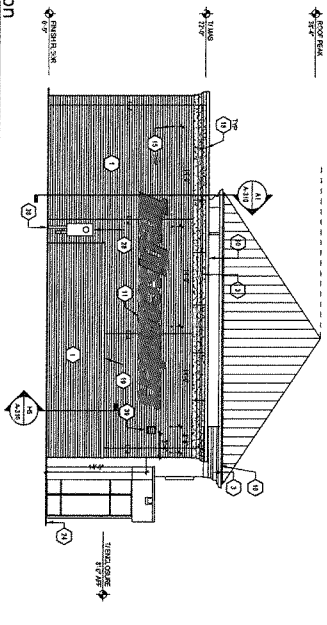


111 Exterior Elevation
A-202 SCALE: 1/8" = 1'-0"

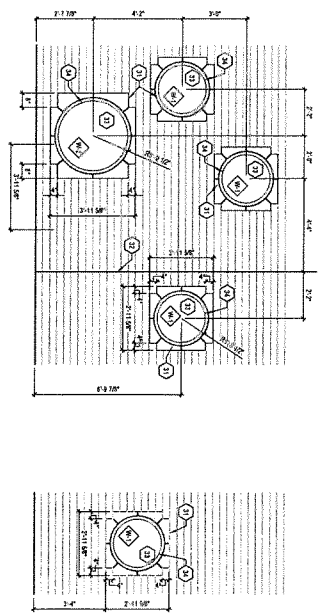
RECEIVED
SEP 01 2017
DESIGN SERVICES



110 Overhead Door Arch Detail
A-202 SCALE: 1/8" = 1'-0"



111 Exterior Elevation
A-202 SCALE: 1/8" = 1'-0"



110 Precast Window Surround Details
A-202 SCALE: 3/8" = 1'-0"

- KEY NOTES**
1. CONSULT WITH ARCHITECT FOR MATERIALS AND FINISHES.
 2. ALL MATERIALS TO BE USED SHALL BE APPROVED BY ARCHITECT.
 3. ALL MATERIALS TO BE USED SHALL BE APPROVED BY ARCHITECT.
 4. ALL MATERIALS TO BE USED SHALL BE APPROVED BY ARCHITECT.
 5. ALL MATERIALS TO BE USED SHALL BE APPROVED BY ARCHITECT.
 6. ALL MATERIALS TO BE USED SHALL BE APPROVED BY ARCHITECT.
 7. ALL MATERIALS TO BE USED SHALL BE APPROVED BY ARCHITECT.
 8. ALL MATERIALS TO BE USED SHALL BE APPROVED BY ARCHITECT.
 9. ALL MATERIALS TO BE USED SHALL BE APPROVED BY ARCHITECT.
 10. ALL MATERIALS TO BE USED SHALL BE APPROVED BY ARCHITECT.
 11. ALL MATERIALS TO BE USED SHALL BE APPROVED BY ARCHITECT.
 12. ALL MATERIALS TO BE USED SHALL BE APPROVED BY ARCHITECT.
 13. ALL MATERIALS TO BE USED SHALL BE APPROVED BY ARCHITECT.
 14. ALL MATERIALS TO BE USED SHALL BE APPROVED BY ARCHITECT.
 15. ALL MATERIALS TO BE USED SHALL BE APPROVED BY ARCHITECT.
 16. ALL MATERIALS TO BE USED SHALL BE APPROVED BY ARCHITECT.
 17. ALL MATERIALS TO BE USED SHALL BE APPROVED BY ARCHITECT.
 18. ALL MATERIALS TO BE USED SHALL BE APPROVED BY ARCHITECT.
 19. ALL MATERIALS TO BE USED SHALL BE APPROVED BY ARCHITECT.
 20. ALL MATERIALS TO BE USED SHALL BE APPROVED BY ARCHITECT.
 21. ALL MATERIALS TO BE USED SHALL BE APPROVED BY ARCHITECT.
 22. ALL MATERIALS TO BE USED SHALL BE APPROVED BY ARCHITECT.
 23. ALL MATERIALS TO BE USED SHALL BE APPROVED BY ARCHITECT.
 24. ALL MATERIALS TO BE USED SHALL BE APPROVED BY ARCHITECT.
 25. ALL MATERIALS TO BE USED SHALL BE APPROVED BY ARCHITECT.
 26. ALL MATERIALS TO BE USED SHALL BE APPROVED BY ARCHITECT.
 27. ALL MATERIALS TO BE USED SHALL BE APPROVED BY ARCHITECT.
 28. ALL MATERIALS TO BE USED SHALL BE APPROVED BY ARCHITECT.
 29. ALL MATERIALS TO BE USED SHALL BE APPROVED BY ARCHITECT.
 30. ALL MATERIALS TO BE USED SHALL BE APPROVED BY ARCHITECT.
 31. ALL MATERIALS TO BE USED SHALL BE APPROVED BY ARCHITECT.
 32. ALL MATERIALS TO BE USED SHALL BE APPROVED BY ARCHITECT.
 33. ALL MATERIALS TO BE USED SHALL BE APPROVED BY ARCHITECT.

- EXTENSION FINISH SCHEDULE**
- | EXTERIOR FINISH | INTERIOR FINISH |
|-----------------|-----------------|
| 1. CONCRETE | 1. GYP. BOARD |
| 2. PLASTER | 2. GYP. BOARD |
| 3. BRICK | 3. GYP. BOARD |
| 4. BLOCK | 4. GYP. BOARD |
| 5. STUCCO | 5. GYP. BOARD |
| 6. TERRAZZO | 6. GYP. BOARD |
| 7. MARBLE | 7. GYP. BOARD |
| 8. GRANITE | 8. GYP. BOARD |
| 9. QUARTZ | 9. GYP. BOARD |
| 10. LAMINATE | 10. GYP. BOARD |
| 11. PAINT | 11. GYP. BOARD |
| 12. VENEER | 12. GYP. BOARD |
| 13. CARPET | 13. GYP. BOARD |
| 14. TILE | 14. GYP. BOARD |
| 15. POLISH | 15. GYP. BOARD |
| 16. STAIN | 16. GYP. BOARD |
| 17. SEAL | 17. GYP. BOARD |
| 18. WAX | 18. GYP. BOARD |
| 19. OIL | 19. GYP. BOARD |
| 20. FINISH | 20. GYP. BOARD |

FRCH |
311 Elm Street, Suite 100
Chattanooga, TN 37402
Phone: 423.249.1234

TireDiscounters

ISSUE INFORMATION
Issue Date: xx.xx.xx
REVISIONS

PROJECT INFORMATION
Project: C
Louisville, KY

FRCH / ARCHITECTURE, INC. P.C.

DATE: 11/11/11

DESIGNED BY: [Name]
DRAWN BY: [Name]
CHECKED BY: [Name]
DATE: 11/11/11

SHEET INFORMATION
EXTERIOR ELEVATIONS

PROJECT NO: A-202