


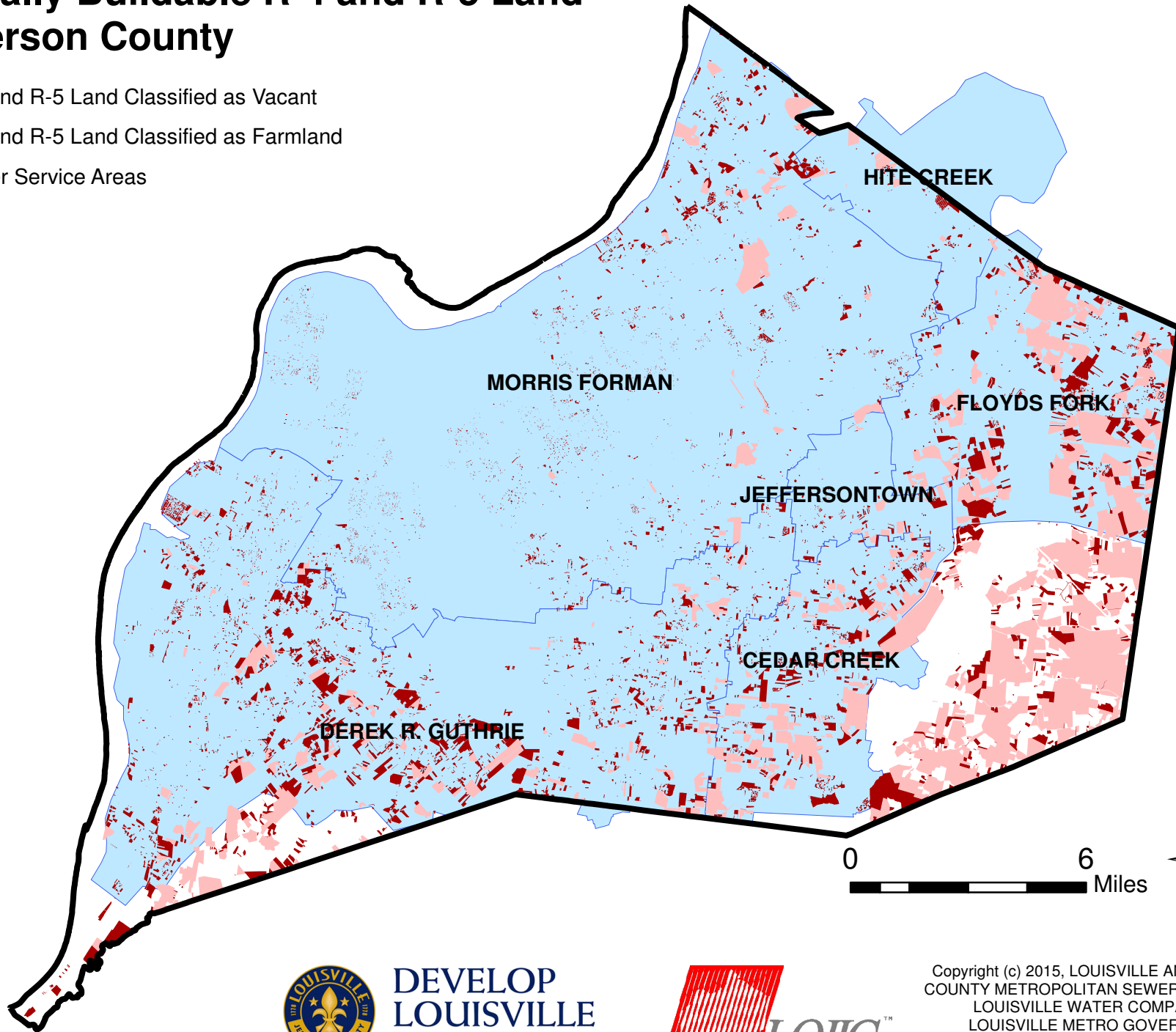


Potentially Buildable R-4 and R-5 Land in Jefferson County

-  R-4 and R-5 Land Classified as Vacant
-  R-4 and R-5 Land Classified as Farmland
-  Sewer Service Areas



**DEVELOP
LOUISVILLE**
LOUISVILLE FORWARD



Copyright (c) 2015, LOUISVILLE AND JEFFERSON COUNTY METROPOLITAN SEWER DISTRICT (MSD), LOUISVILLE WATER COMPANY (LWC), LOUISVILLE METRO GOVERNMENT and JEFFERSON COUNTY PROPERTY VALUATION ADMINISTRATOR (PVA). All Rights Reserved.