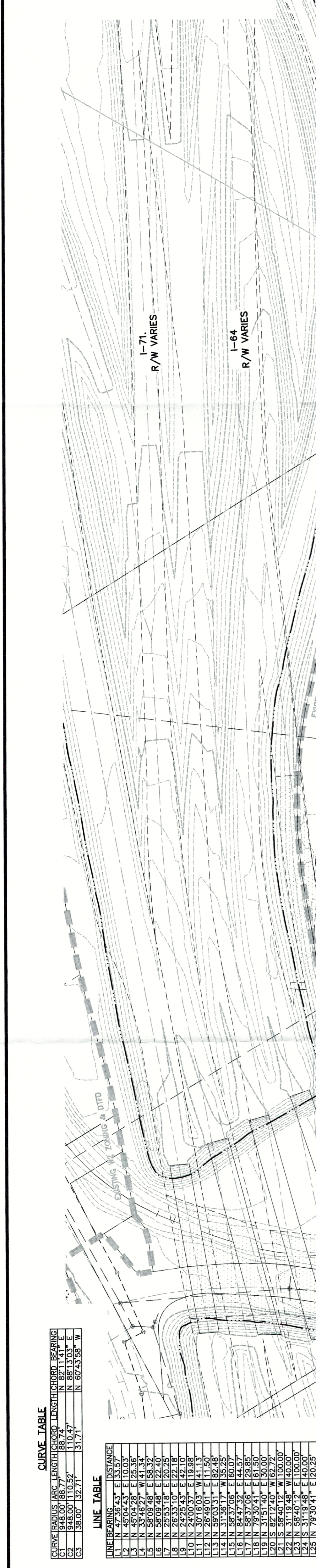


LEGEND

EXISTING CONTOUR
 EXISTING TREE MASS
 EXISTING OVERHEAD TRACKS
 EXISTING UTILITY POLE
 EXISTING 100 FLOODPLAIN
 EXISTING CATCH BASIN & YARD DRAIN W/P PIPE
 EXISTING SANITARY MANHOLE W/P PIPE
 EXISTING FOREMAN
 PROPOSED CATCH BASIN & YARD DRAIN W/P PIPE
 PROPOSED SANITARY MANHOLE W/P PIPE
 PROPOSED PROPERTY SERVICE CONNECTION
 PROPOSED DRAINAGE ARROW



OWNERS:
 (PROPERTY NOT YET CLOSED)
 OUTDOOR SYSTEMS, INC.
 WATERFRONT DEVELOPMENT CORP.
 LOUISVILLE GAS & ELECTRIC CO.
 D.B. 1369, P.C. 365

OVERALL SITE DATA:
 DISTRICT: BUSINESS/DOWNTOWN
 EXISTING ZONING: D-3
 EXISTING FLOOR AREA RATIO: 5.71
 EXISTING LAND USE: VACANT/INDUSTRIAL
 EXISTING TREE AREA: N/A
 PARKING PROVIDED: N/A
 DRAINAGE: N/A
 TOTAL EXISTING IMPERVIOUS AREA: 1,004,600 S.F.
 TOTAL PROPOSED IMPERVIOUS AREA: 969,987 S.F.

TRACT 1 LANDSCAPE DATA:
 GROSS SITE AREA: 114,948 S.F.
 I.L.A. PROVIDED: 7.5% V.I.A. 8,621 S.F.
 I.L.A. REQUIRED: 6,924 S.F.

TRACT 2 LANDSCAPE DATA:
 GROSS SITE AREA: 231,800 S.F.
 I.L.A. PROVIDED: 7.5% V.I.A. 17,385 S.F.
 I.L.A. REQUIRED: 17,385 S.F.

TRACT 3 LANDSCAPE DATA:
 GROSS SITE AREA: 114,039 S.F.
 I.L.A. PROVIDED: 7.5% V.I.A. 8,621 S.F.
 I.L.A. REQUIRED: 8,621 S.F.

TRACT 1 DATA:
 TOTAL LAND AREA: 4.294 AC
 EXISTING IMPERVIOUS SURFACE: 114,948 S.F.
 FLOOR AREA RATIO: 0.59
 BUILDINGS: 1
 BUILDING AREA: 104,000 S.F. GROSS
 80 ±
 CAR PARKING: 316 SPACES
 BICYCLE PARKING (INSIDE BUILDING): 2
 SHORT TERM: 2

TRACT 2 DATA:
 TOTAL LAND AREA: 22.814 AC
 EXISTING IMPERVIOUS SURFACE: 842,820 S.F.
 FLOOR AREA RATIO: 2.61
 BUILDINGS: 1
 BUILDING AREA: 104,000 S.F. GROSS
 80 ±
 CAR PARKING: 475 SPACES
 BICYCLE PARKING (INSIDE BUILDING): 12
 SHORT TERM: 12

TRACT 3 DATA:
 TOTAL LAND AREA: 22.814 AC
 EXISTING IMPERVIOUS SURFACE: 842,820 S.F.
 FLOOR AREA RATIO: 2.61
 BUILDINGS: 1
 BUILDING AREA: 104,000 S.F. GROSS
 80 ±
 CAR PARKING: 475 SPACES
 BICYCLE PARKING (INSIDE BUILDING): 12
 SHORT TERM: 12

TRACT 1 DATA:
 TOTAL LAND AREA: 4.294 AC
 EXISTING IMPERVIOUS SURFACE: 114,948 S.F.
 FLOOR AREA RATIO: 0.59
 BUILDINGS: 1
 BUILDING AREA: 104,000 S.F. GROSS
 80 ±
 CAR PARKING: 316 SPACES
 BICYCLE PARKING (INSIDE BUILDING): 2
 SHORT TERM: 2

TRACT 2 DATA:
 TOTAL LAND AREA: 22.814 AC
 EXISTING IMPERVIOUS SURFACE: 842,820 S.F.
 FLOOR AREA RATIO: 2.61
 BUILDINGS: 1
 BUILDING AREA: 104,000 S.F. GROSS
 80 ±
 CAR PARKING: 475 SPACES
 BICYCLE PARKING (INSIDE BUILDING): 12
 SHORT TERM: 12

TRACT 3 DATA:
 TOTAL LAND AREA: 22.814 AC
 EXISTING IMPERVIOUS SURFACE: 842,820 S.F.
 FLOOR AREA RATIO: 2.61
 BUILDINGS: 1
 BUILDING AREA: 104,000 S.F. GROSS
 80 ±
 CAR PARKING: 475 SPACES
 BICYCLE PARKING (INSIDE BUILDING): 12
 SHORT TERM: 12

TRACT 1 DATA:
 TOTAL LAND AREA: 4.294 AC
 EXISTING IMPERVIOUS SURFACE: 114,948 S.F.
 FLOOR AREA RATIO: 0.59
 BUILDINGS: 1
 BUILDING AREA: 104,000 S.F. GROSS
 80 ±
 CAR PARKING: 316 SPACES
 BICYCLE PARKING (INSIDE BUILDING): 2
 SHORT TERM: 2

TRACT 2 DATA:
 TOTAL LAND AREA: 22.814 AC
 EXISTING IMPERVIOUS SURFACE: 842,820 S.F.
 FLOOR AREA RATIO: 2.61
 BUILDINGS: 1
 BUILDING AREA: 104,000 S.F. GROSS
 80 ±
 CAR PARKING: 475 SPACES
 BICYCLE PARKING (INSIDE BUILDING): 12
 SHORT TERM: 12

TRACT 3 DATA:
 TOTAL LAND AREA: 22.814 AC
 EXISTING IMPERVIOUS SURFACE: 842,820 S.F.
 FLOOR AREA RATIO: 2.61
 BUILDINGS: 1
 BUILDING AREA: 104,000 S.F. GROSS
 80 ±
 CAR PARKING: 475 SPACES
 BICYCLE PARKING (INSIDE BUILDING): 12
 SHORT TERM: 12

DEVELOPER
 LOUISVILLE CITY FC - STADIUM DISTRICT
 LOUISVILLE/JEFFERSON COUNTY
 110 W. MAIN, 2ND FLOOR
 LOUISVILLE, KY 40202

OWNER
 METRO GOVERNMENT
 444 S. 5TH STREET, SUITE 600
 LOUISVILLE, KY 40202

GENERAL NOTES:
 1. ANY MODIFICATION, RELOCATION, OR REMOVAL OF ANY MSO STRUCTURE IS SUBJECT TO MSO REVIEW AND APPROVAL, INCLUDING SUCH CONDITIONS AS MAY BE ESTABLISHED IN THE DESIGN REVIEW.
 2. SUBJECT TO MSO REVIEW AND APPROVAL, INCLUDING SUCH CONDITIONS AS MAY BE ESTABLISHED IN THE DESIGN REVIEW.
 3. SUBJECT TO MSO REVIEW AND APPROVAL, INCLUDING SUCH CONDITIONS AS MAY BE ESTABLISHED IN THE DESIGN REVIEW.

GENERAL NOTES:
 1. ANY MODIFICATION, RELOCATION, OR REMOVAL OF ANY MSO STRUCTURE IS SUBJECT TO MSO REVIEW AND APPROVAL, INCLUDING SUCH CONDITIONS AS MAY BE ESTABLISHED IN THE DESIGN REVIEW.
 2. SUBJECT TO MSO REVIEW AND APPROVAL, INCLUDING SUCH CONDITIONS AS MAY BE ESTABLISHED IN THE DESIGN REVIEW.
 3. SUBJECT TO MSO REVIEW AND APPROVAL, INCLUDING SUCH CONDITIONS AS MAY BE ESTABLISHED IN THE DESIGN REVIEW.

GENERAL NOTES:
 1. ANY MODIFICATION, RELOCATION, OR REMOVAL OF ANY MSO STRUCTURE IS SUBJECT TO MSO REVIEW AND APPROVAL, INCLUDING SUCH CONDITIONS AS MAY BE ESTABLISHED IN THE DESIGN REVIEW.
 2. SUBJECT TO MSO REVIEW AND APPROVAL, INCLUDING SUCH CONDITIONS AS MAY BE ESTABLISHED IN THE DESIGN REVIEW.
 3. SUBJECT TO MSO REVIEW AND APPROVAL, INCLUDING SUCH CONDITIONS AS MAY BE ESTABLISHED IN THE DESIGN REVIEW.

GENERAL NOTES:
 1. ANY MODIFICATION, RELOCATION, OR REMOVAL OF ANY MSO STRUCTURE IS SUBJECT TO MSO REVIEW AND APPROVAL, INCLUDING SUCH CONDITIONS AS MAY BE ESTABLISHED IN THE DESIGN REVIEW.
 2. SUBJECT TO MSO REVIEW AND APPROVAL, INCLUDING SUCH CONDITIONS AS MAY BE ESTABLISHED IN THE DESIGN REVIEW.
 3. SUBJECT TO MSO REVIEW AND APPROVAL, INCLUDING SUCH CONDITIONS AS MAY BE ESTABLISHED IN THE DESIGN REVIEW.

GENERAL NOTES:
 1. ANY MODIFICATION, RELOCATION, OR REMOVAL OF ANY MSO STRUCTURE IS SUBJECT TO MSO REVIEW AND APPROVAL, INCLUDING SUCH CONDITIONS AS MAY BE ESTABLISHED IN THE DESIGN REVIEW.
 2. SUBJECT TO MSO REVIEW AND APPROVAL, INCLUDING SUCH CONDITIONS AS MAY BE ESTABLISHED IN THE DESIGN REVIEW.
 3. SUBJECT TO MSO REVIEW AND APPROVAL, INCLUDING SUCH CONDITIONS AS MAY BE ESTABLISHED IN THE DESIGN REVIEW.

REVERSED DETAILED DISTRICT DEVELOPMENT PLAN (TRACT 1 & 2 ONLY)
 LOUISVILLE CITY FC - STADIUM DISTRICT
 LOUISVILLE/JEFFERSON COUNTY
 110 W. MAIN, 2ND FLOOR
 LOUISVILLE, KY 40202

OWNER
 METRO GOVERNMENT
 444 S. 5TH STREET, SUITE 600
 LOUISVILLE, KY 40202

GENERAL NOTES:
 1. ANY MODIFICATION, RELOCATION, OR REMOVAL OF ANY MSO STRUCTURE IS SUBJECT TO MSO REVIEW AND APPROVAL, INCLUDING SUCH CONDITIONS AS MAY BE ESTABLISHED IN THE DESIGN REVIEW.
 2. SUBJECT TO MSO REVIEW AND APPROVAL, INCLUDING SUCH CONDITIONS AS MAY BE ESTABLISHED IN THE DESIGN REVIEW.
 3. SUBJECT TO MSO REVIEW AND APPROVAL, INCLUDING SUCH CONDITIONS AS MAY BE ESTABLISHED IN THE DESIGN REVIEW.

GENERAL NOTES:
 1. ANY MODIFICATION, RELOCATION, OR REMOVAL OF ANY MSO STRUCTURE IS SUBJECT TO MSO REVIEW AND APPROVAL, INCLUDING SUCH CONDITIONS AS MAY BE ESTABLISHED IN THE DESIGN REVIEW.
 2. SUBJECT TO MSO REVIEW AND APPROVAL, INCLUDING SUCH CONDITIONS AS MAY BE ESTABLISHED IN THE DESIGN REVIEW.
 3. SUBJECT TO MSO REVIEW AND APPROVAL, INCLUDING SUCH CONDITIONS AS MAY BE ESTABLISHED IN THE DESIGN REVIEW.

GENERAL NOTES:
 1. ANY MODIFICATION, RELOCATION, OR REMOVAL OF ANY MSO STRUCTURE IS SUBJECT TO MSO REVIEW AND APPROVAL, INCLUDING SUCH CONDITIONS AS MAY BE ESTABLISHED IN THE DESIGN REVIEW.
 2. SUBJECT TO MSO REVIEW AND APPROVAL, INCLUDING SUCH CONDITIONS AS MAY BE ESTABLISHED IN THE DESIGN REVIEW.
 3. SUBJECT TO MSO REVIEW AND APPROVAL, INCLUDING SUCH CONDITIONS AS MAY BE ESTABLISHED IN THE DESIGN REVIEW.

GENERAL NOTES:
 1. ANY MODIFICATION, RELOCATION, OR REMOVAL OF ANY MSO STRUCTURE IS SUBJECT TO MSO REVIEW AND APPROVAL, INCLUDING SUCH CONDITIONS AS MAY BE ESTABLISHED IN THE DESIGN REVIEW.
 2. SUBJECT TO MSO REVIEW AND APPROVAL, INCLUDING SUCH CONDITIONS AS MAY BE ESTABLISHED IN THE DESIGN REVIEW.
 3. SUBJECT TO MSO REVIEW AND APPROVAL, INCLUDING SUCH CONDITIONS AS MAY BE ESTABLISHED IN THE DESIGN REVIEW.

GENERAL NOTES:
 1. ANY MODIFICATION, RELOCATION, OR REMOVAL OF ANY MSO STRUCTURE IS SUBJECT TO MSO REVIEW AND APPROVAL, INCLUDING SUCH CONDITIONS AS MAY BE ESTABLISHED IN THE DESIGN REVIEW.
 2. SUBJECT TO MSO REVIEW AND APPROVAL, INCLUDING SUCH CONDITIONS AS MAY BE ESTABLISHED IN THE DESIGN REVIEW.
 3. SUBJECT TO MSO REVIEW AND APPROVAL, INCLUDING SUCH CONDITIONS AS MAY BE ESTABLISHED IN THE DESIGN REVIEW.

REVISIONS

NO.	DATE	DESCRIPTION
1	4/2/18	PER ARCH COMMENTS
2	4/7/18	PER ARCH COMMENTS
3	4/16/18	REVISED LAYOUT

VERTICAL SCALE: 1"=100'
HORIZONTAL SCALE: 1"=100'
 DATE: 3/12/18
 JOB NUMBER: 3459
 SHEET

MSO FACILITY RELOCATION NOTES:
 1. ANY MODIFICATION, RELOCATION, OR REMOVAL OF ANY MSO STRUCTURE IS SUBJECT TO MSO REVIEW AND APPROVAL, INCLUDING SUCH CONDITIONS AS MAY BE ESTABLISHED IN THE DESIGN REVIEW.
 2. SUBJECT TO MSO REVIEW AND APPROVAL, INCLUDING SUCH CONDITIONS AS MAY BE ESTABLISHED IN THE DESIGN REVIEW.
 3. SUBJECT TO MSO REVIEW AND APPROVAL, INCLUDING SUCH CONDITIONS AS MAY BE ESTABLISHED IN THE DESIGN REVIEW.

MSO FACILITY RELOCATION NOTES:
 1. ANY MODIFICATION, RELOCATION, OR REMOVAL OF ANY MSO STRUCTURE IS SUBJECT TO MSO REVIEW AND APPROVAL, INCLUDING SUCH CONDITIONS AS MAY BE ESTABLISHED IN THE DESIGN REVIEW.
 2. SUBJECT TO MSO REVIEW AND APPROVAL, INCLUDING SUCH CONDITIONS AS MAY BE ESTABLISHED IN THE DESIGN REVIEW.
 3. SUBJECT TO MSO REVIEW AND APPROVAL, INCLUDING SUCH CONDITIONS AS MAY BE ESTABLISHED IN THE DESIGN REVIEW.

MSO FACILITY RELOCATION NOTES:
 1. ANY MODIFICATION, RELOCATION, OR REMOVAL OF ANY MSO STRUCTURE IS SUBJECT TO MSO REVIEW AND APPROVAL, INCLUDING SUCH CONDITIONS AS MAY BE ESTABLISHED IN THE DESIGN REVIEW.
 2. SUBJECT TO MSO REVIEW AND APPROVAL, INCLUDING SUCH CONDITIONS AS MAY BE ESTABLISHED IN THE DESIGN REVIEW.
 3. SUBJECT TO MSO REVIEW AND APPROVAL, INCLUDING SUCH CONDITIONS AS MAY BE ESTABLISHED IN THE DESIGN REVIEW.

MSO FACILITY RELOCATION NOTES:
 1. ANY MODIFICATION, RELOCATION, OR REMOVAL OF ANY MSO STRUCTURE IS SUBJECT TO MSO REVIEW AND APPROVAL, INCLUDING SUCH CONDITIONS AS MAY BE ESTABLISHED IN THE DESIGN REVIEW.
 2. SUBJECT TO MSO REVIEW AND APPROVAL, INCLUDING SUCH CONDITIONS AS MAY BE ESTABLISHED IN THE DESIGN REVIEW.
 3. SUBJECT TO MSO REVIEW AND APPROVAL, INCLUDING SUCH CONDITIONS AS MAY BE ESTABLISHED IN THE DESIGN REVIEW.

MSO FACILITY RELOCATION NOTES:
 1. ANY MODIFICATION, RELOCATION, OR REMOVAL OF ANY MSO STRUCTURE IS SUBJECT TO MSO REVIEW AND APPROVAL, INCLUDING SUCH CONDITIONS AS MAY BE ESTABLISHED IN THE DESIGN REVIEW.
 2. SUBJECT TO MSO REVIEW AND APPROVAL, INCLUDING SUCH CONDITIONS AS MAY BE ESTABLISHED IN THE DESIGN REVIEW.
 3. SUBJECT TO MSO REVIEW AND APPROVAL, INCLUDING SUCH CONDITIONS AS MAY BE ESTABLISHED IN THE DESIGN REVIEW.

