





P F V S

ARCHITECTURE
PLANNING
INTERIORS

© DESIGN COPYRIGHT 2016 #15020
18 MARCH 2016

HOMWOOD SUITES
LOUISVILLE, KENTUCKY



P F V S

ARCHITECTURE
PLANNING
INTERIORS

© DESIGN COPYRIGHT 2016 #15020
18 MARCH 2016

HOMWOOD SUITES
LOUISVILLE, KENTUCKY



- A EIFS COLOR 1
- B EIFS COLOR 2
- C EIFS COLOR 3
- D BRICK COLOR 1
- E BRICK COLOR 2
- F STONE
- G LOUVER
- H AWNING

SOUTH ELEVATION

ROOF
108'- 11"

PARAPET
90'- 0"

LEVEL 8
74'- 0"

LEVEL 7
64'- 6"

LEVEL 6
55'- 0"

LEVEL 5
45'- 6"

LEVEL 4
36'- 0"

LEVEL 3
26'- 6"

LEVEL 2
17'- 0"



- A EIFS COLOR 1
- B EIFS COLOR 2
- C EIFS COLOR 3
- D BRICK COLOR 1
- E BRICK COLOR 2
- F STONE
- G LOUVER
- H AWNING

EXISTING BUILDING

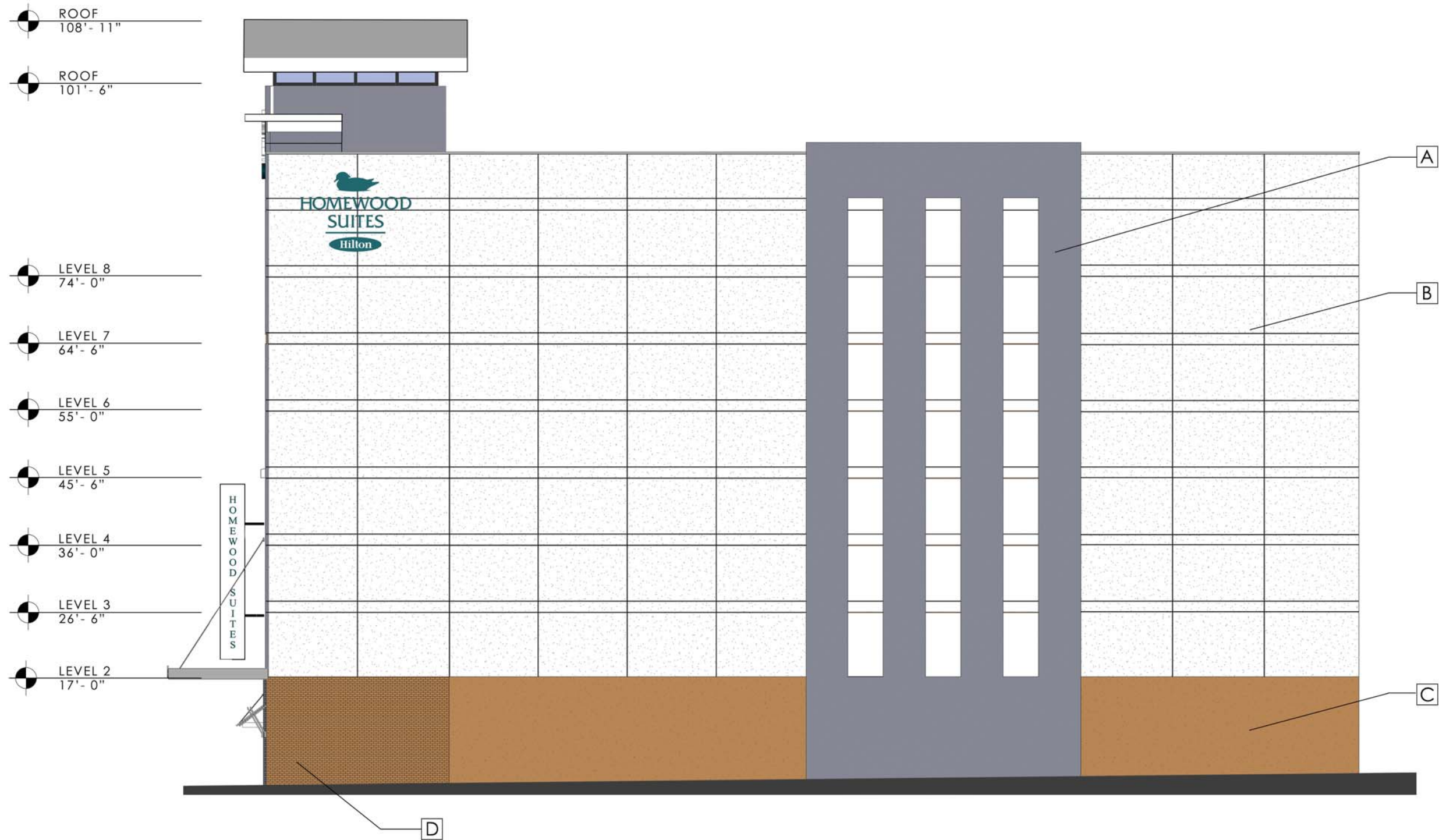
WEST ELEVATION

P F V S

ARCHITECTURE
PLANNING
INTERIORS

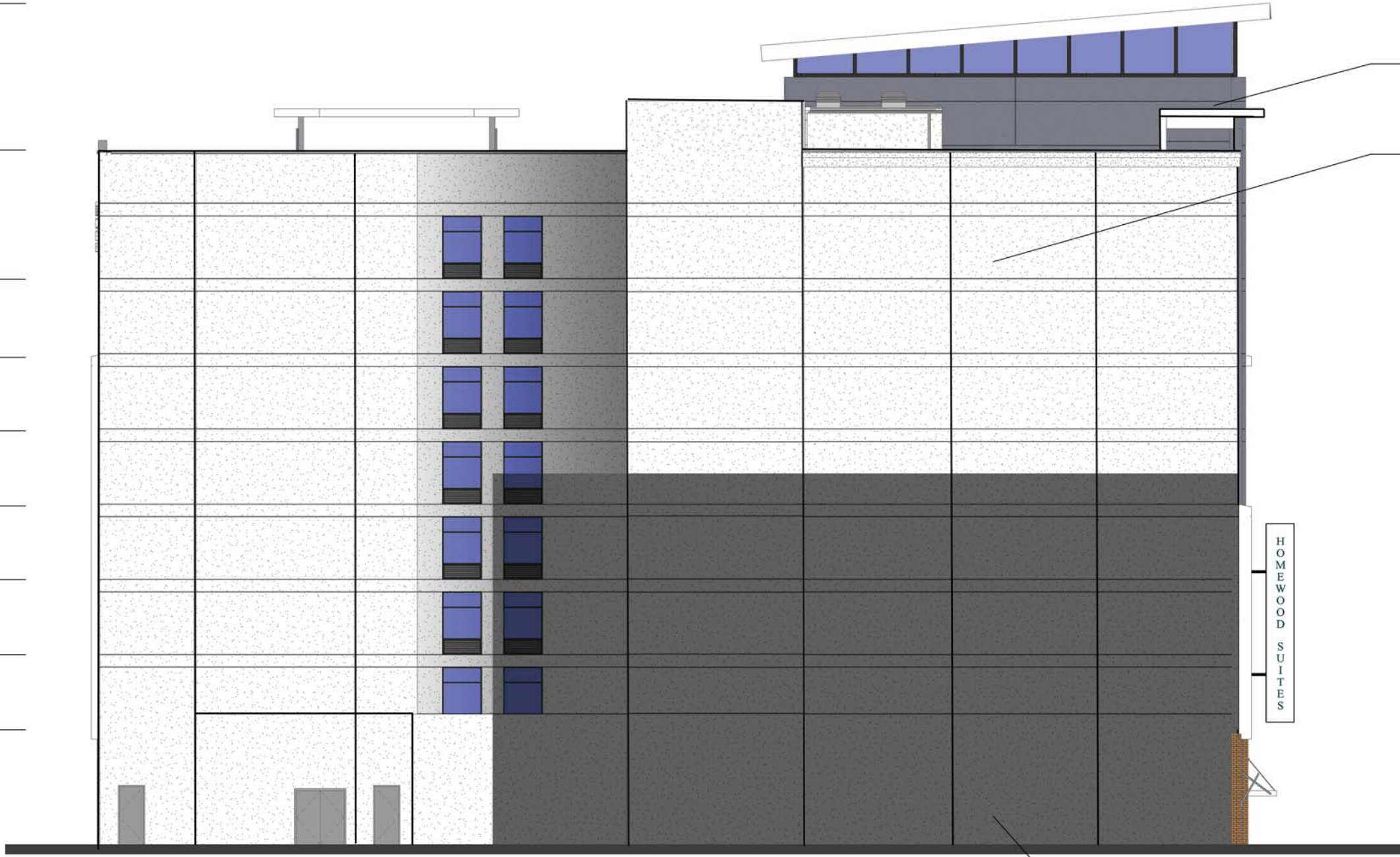
© DESIGN COPYRIGHT 2016 #15020
18 MARCH 2016

HOMEWOOD SUITES
LOUISVILLE, KENTUCKY



EAST ELEVATION

- ROOF
108'- 11"
- PARAPET
90'- 0"
- LEVEL 8
74'- 0"
- LEVEL 7
64'- 6"
- LEVEL 6
55'- 0"
- LEVEL 5
45'- 6"
- LEVEL 4
36'- 0"
- LEVEL 3
26'- 6"
- LEVEL 2
17'- 0"



- A EIFS COLOR 1
- B EIFS COLOR 2
- C EIFS COLOR 3
- D BRICK COLOR 1
- E BRICK COLOR 2
- F STONE
- G LOUVER
- H AWNING

NORTH ELEVATION