

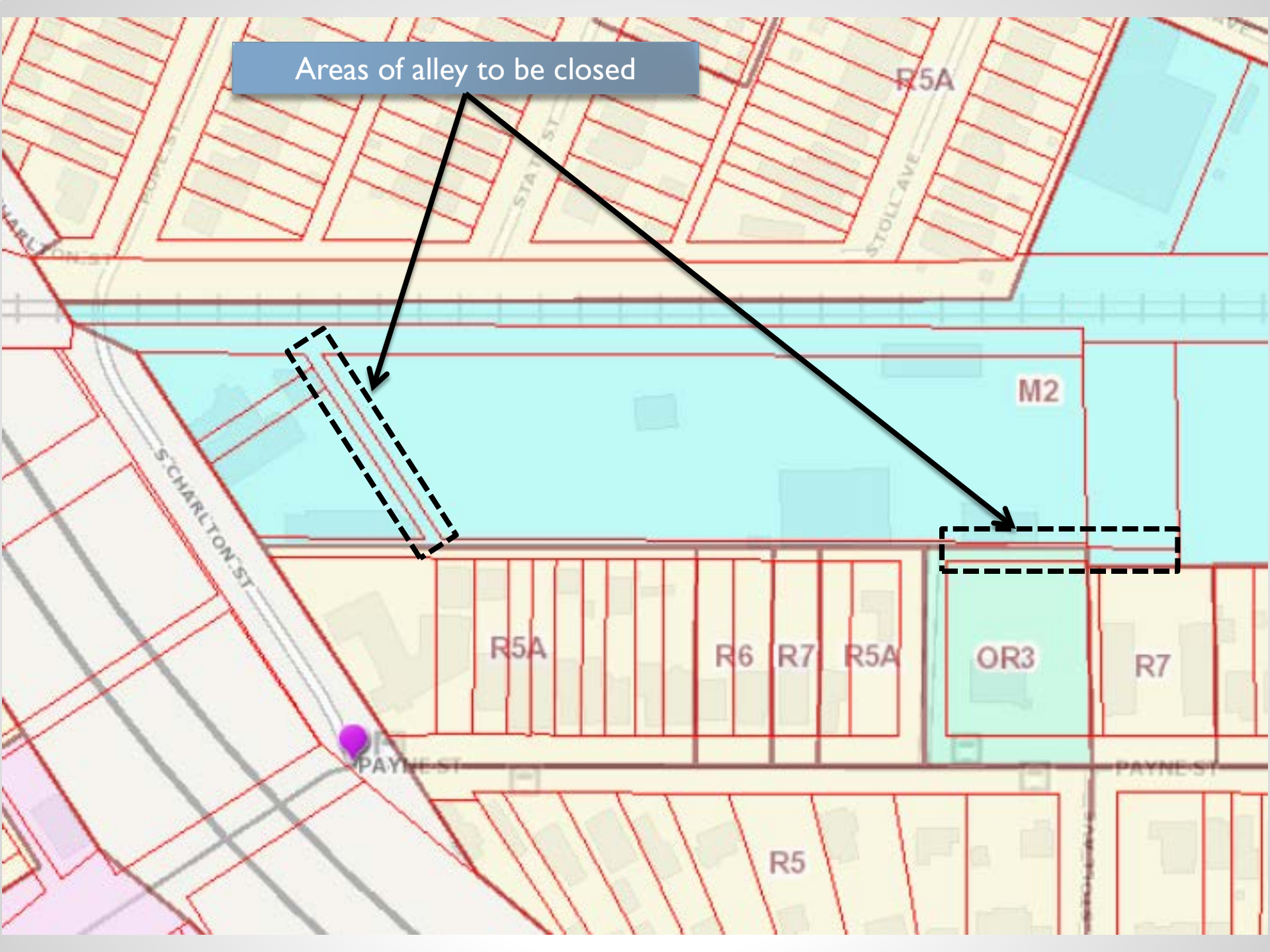
DOCKET NO. 17STREETS1011
PROPOSED CLOSURE OF ALLEY
LOCATED BETWEEN PAYNE STREET &
S. CHARLTON STREET

c/o Louisville Paving Co.



Existing zoning on site

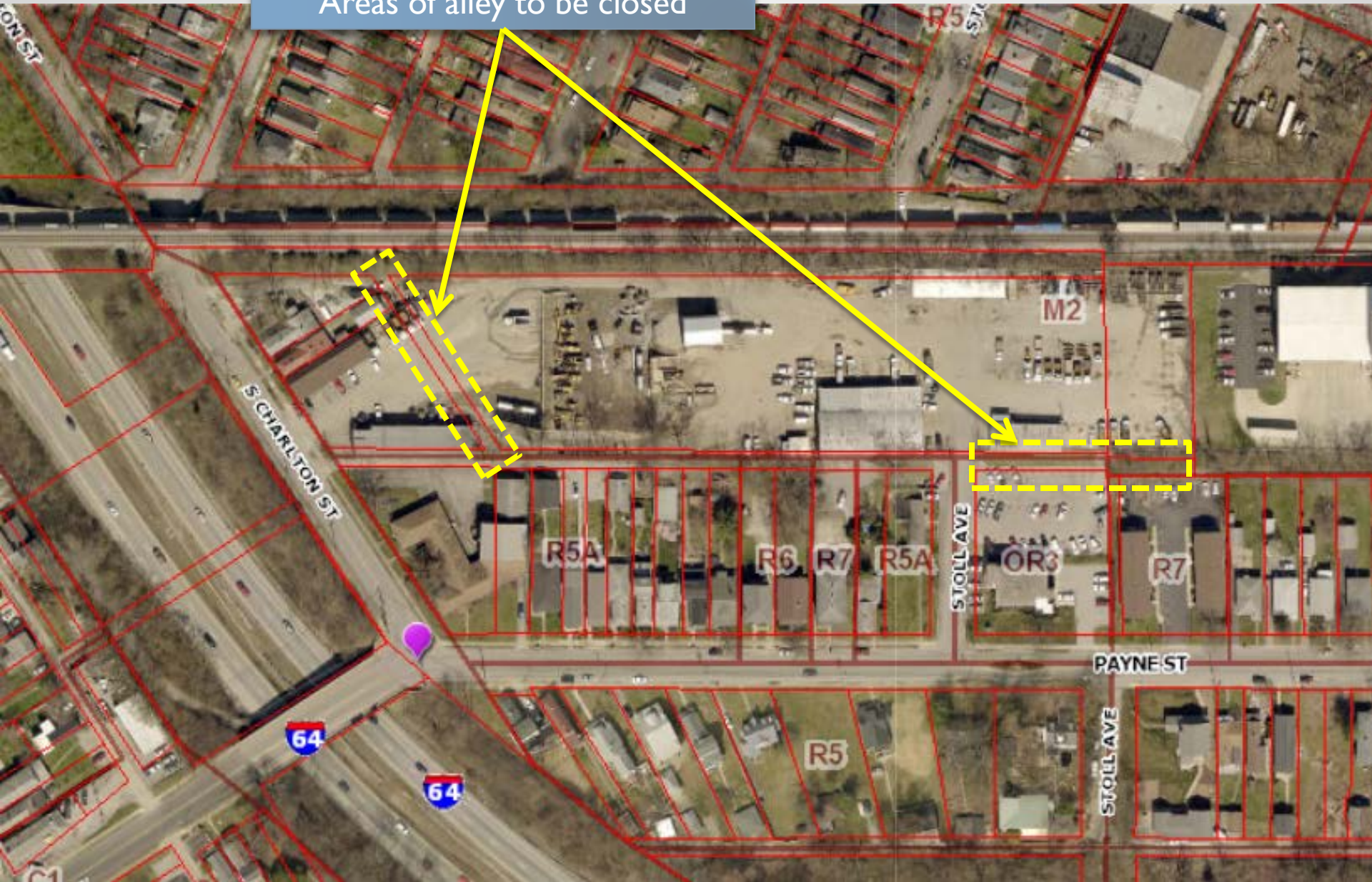
Areas of alley to be closed





Aerial of existing conditions on site

Areas of alley to be closed

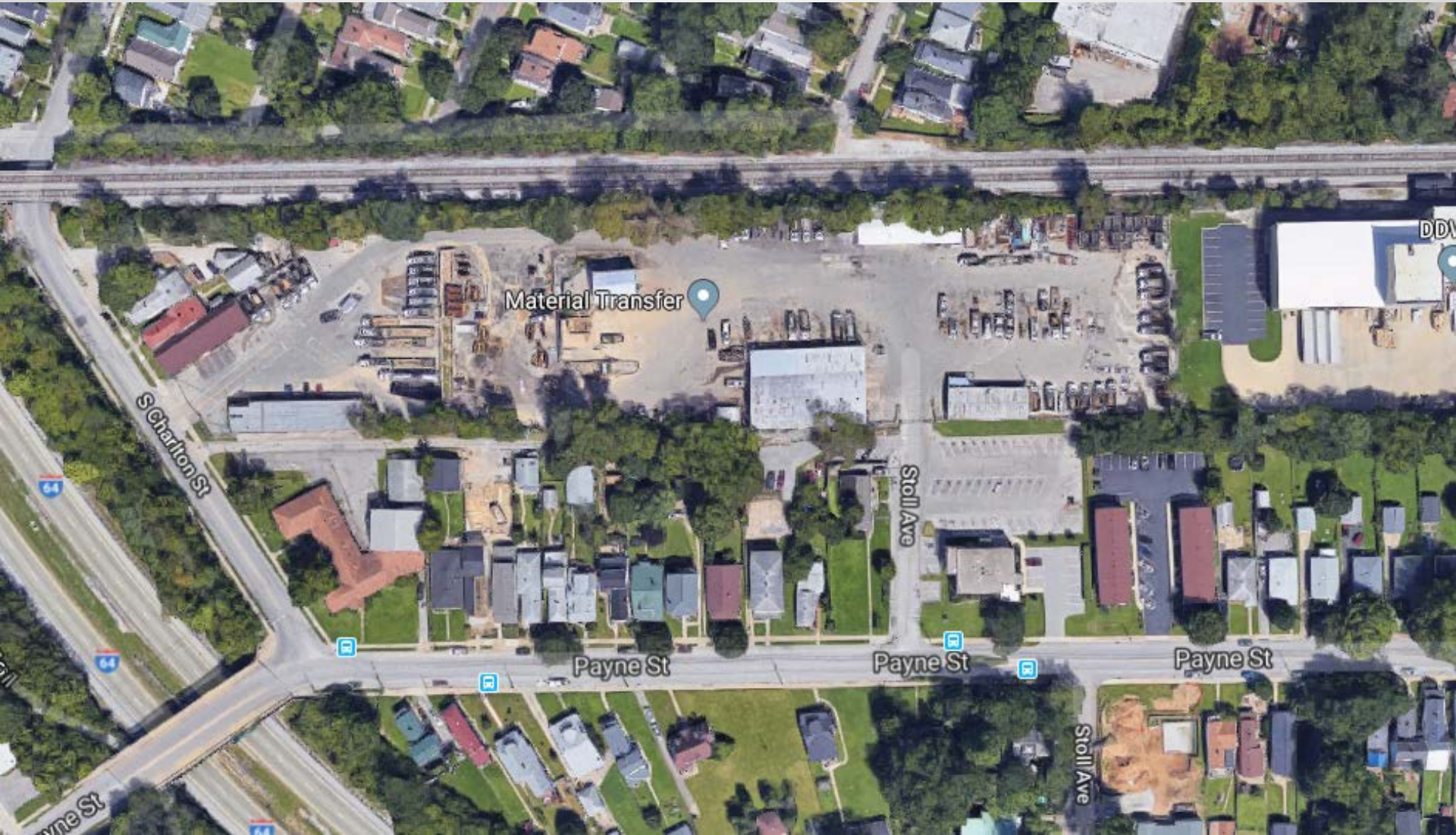




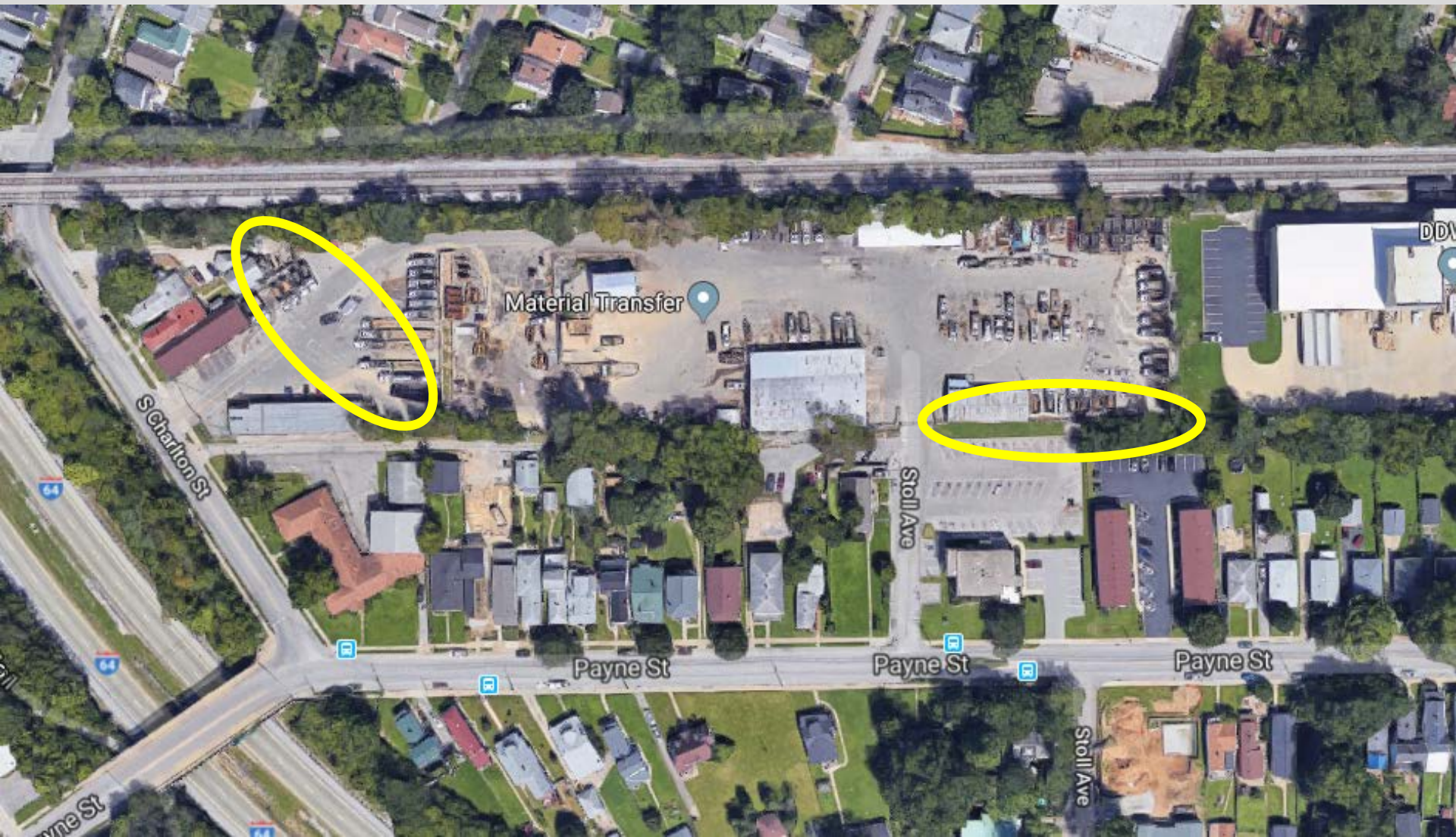
Close up aerial of proposed alley closure



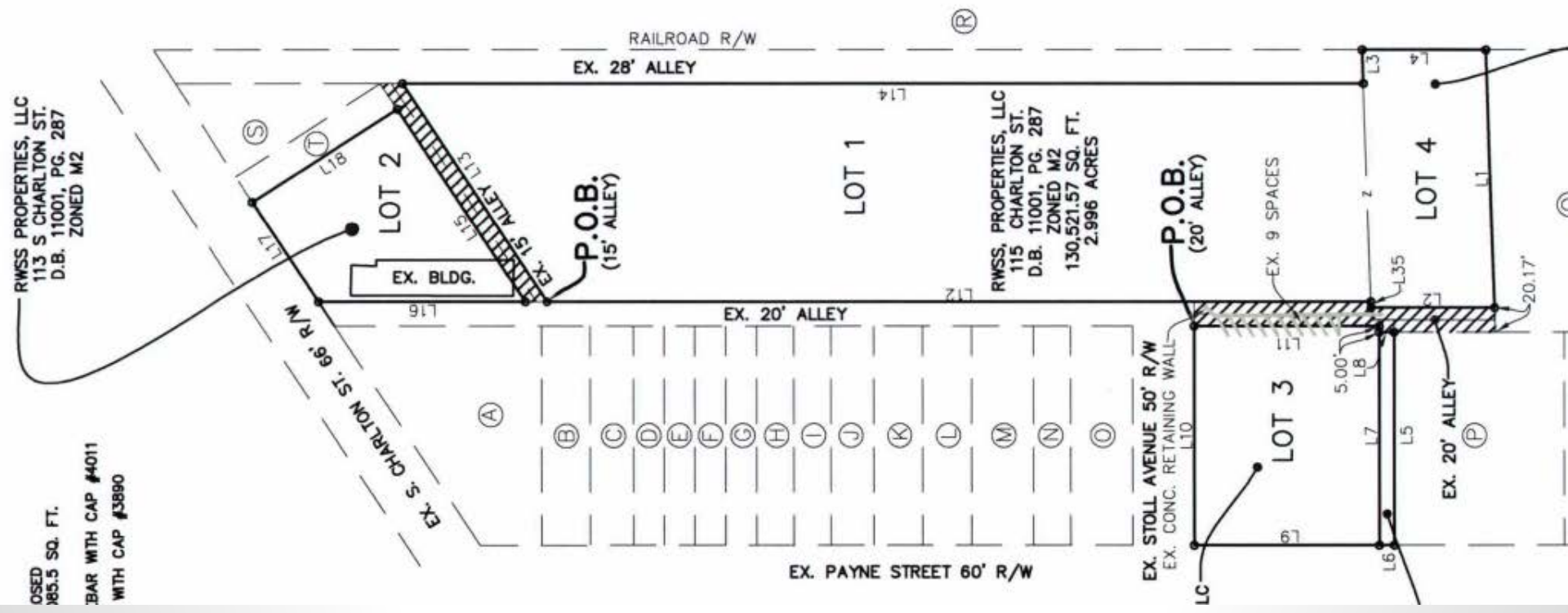
Close up aerial of proposed alley closure



Google aerial of existing conditions on site

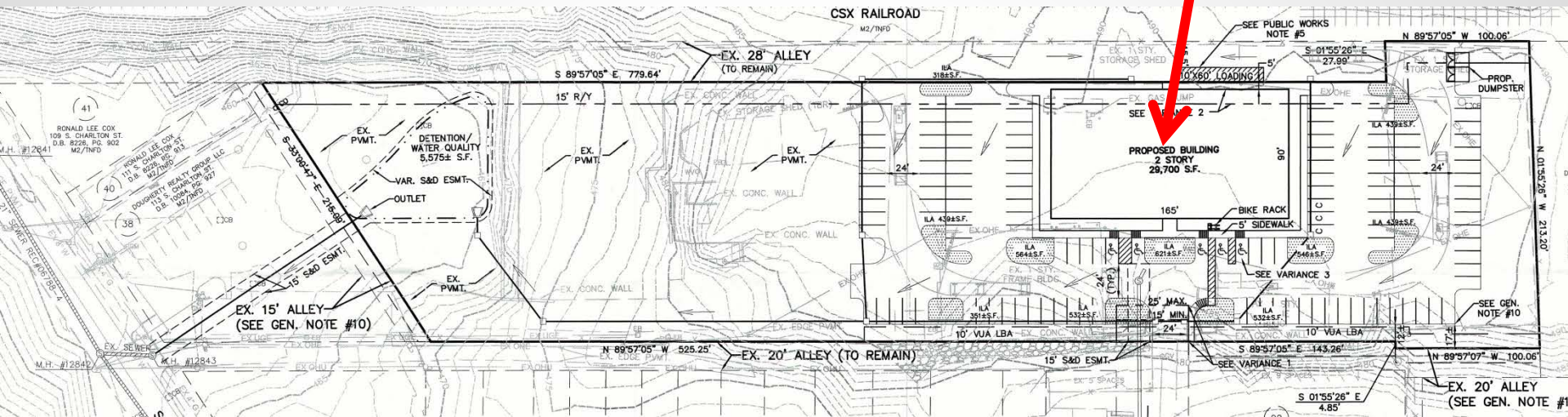


Areas of alley closure circled in yellow



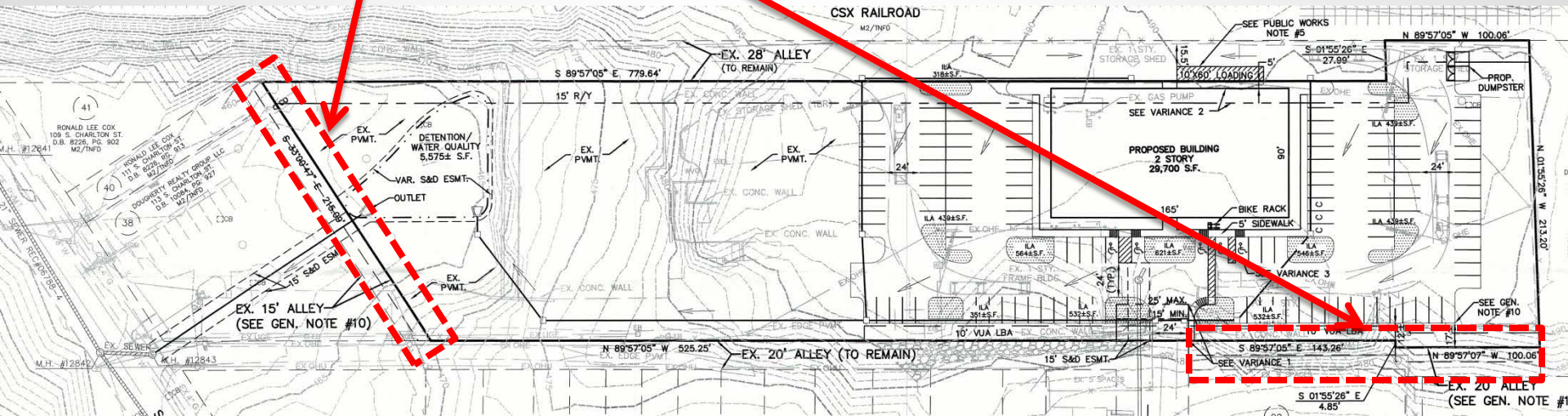
Proposed alley closure plat

Approved Advanced Business Solutions Corporate HQ



Approved development plan under Docket No. 17DEVPLAN1110 for the Advanced Business Solutions Corporate Headquarters

Areas of alley to be closed



Proposed alley closures in relation to the Approved development plan, under Docket No. 17DEVPLAN1110, for the Advanced Business Solutions Corporate Headquarters