

NOTES:

The basis of bearing for this survey as North as it was observed in the field July 3rd, 2020 - S. 81° 36' 15" E. Jefferson County, Kentucky.

The tract shown on this plat is subject to all easements and right-of-ways and restrictions, visually apparent and of record.

Lot # 133
B.&A. LONG
D.B. 9393, Pg. 314

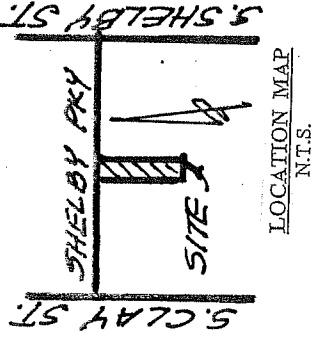
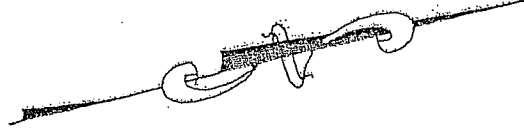
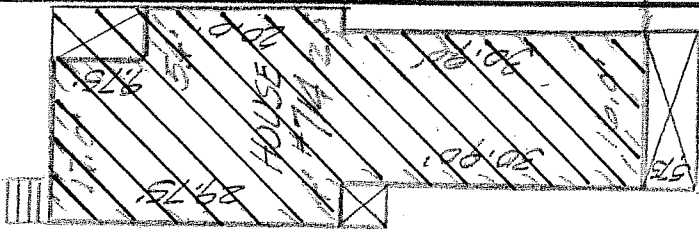
Lot # 132
S. SASTRE
D.B. 11296, Pg. 104

Lot # 131
C. & H. KRAUSE
D.B. 9183, Pg. 649

Lot # 142
B. HARPER
D.B. 9369, Pg. 504

Tax Lot # 141
D.B. 11613, Pg. 219
3,000 S.F.

Lot # 140
SANTAL, LLC
D.B. 10311, Pg. 704



N. 81° 36' 15" W.
25.00'

S. 08° 46' 37" W. 120.00'
N. 08° 46' 37" E. 120.00'

END H.W.P. 1/7

END H.W.P. 1/7

S. 81° 36' 15" E.

714 SHELBY PARKWAY 50' R/W

Per S. 34° 40' 29" W.

SITE PLAN

For: S & S Investment of KY., Inc.
714 SHELBY PARKWAY
BLOCK 23-E, Lot # 141
D.B. 11613, Pg. 219
Jefferson County, KY

Scale: 1" = 20' Date: July 3rd, 2020

C. R. P. & ASSOCIATES, INC.
7321 New La Grange Road, Suite 111
Louisville, KY 40222
(502) 423-8747

PLOT PLAN ONLY
DO NOT SCALE



NOTES:

The basis of bearing for this survey as North as it was observed in the field July 3rd, 2020 - S. 81° 36' 15" E. Jefferson County, Kentucky.

The tract shown on this plat is subject to all easements and right-of-ways and restrictions, visually apparent and of record.

Lot # 133

B.&A. LONG
D.B. 9393, Pg. 314

Lot # 132
S. SASTRE

D.B. 11296, Pg. 104

Lot # 131

C.&H. KRAUSE
D.B. 9183, Pg. 649

Lot # 142

B. HARPER
D.B. 9369, Pg. 504

Lot # 140

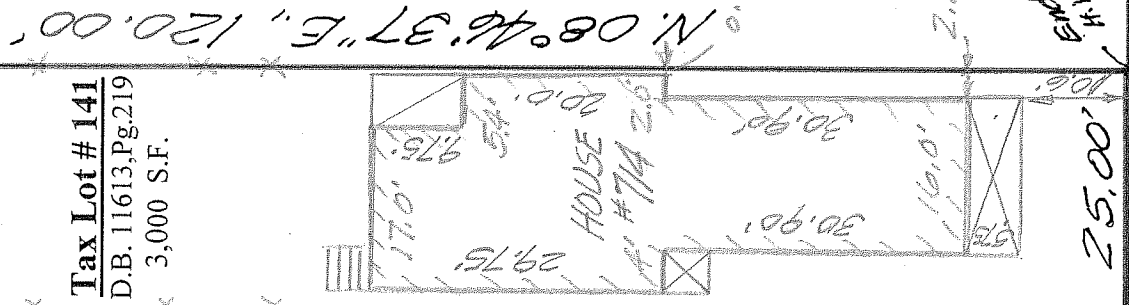
SANTAL, LLC
D.B. 10311, Pg. 704

Tax Lot # 141

D.B. 11613, Pg. 219
3,000 S.F.

N. 81°36'15" W.
25.00'

S. 08°46'37" W. 120.00'



S. 81°36'15" E.

END 1/4\"/>

END 1/4\"/>

714 SHELBY PARKWAY 50' R/W

Per S. 34° 40' 29" W.

PLOT PLAN ONLY
DO NOT SCALE

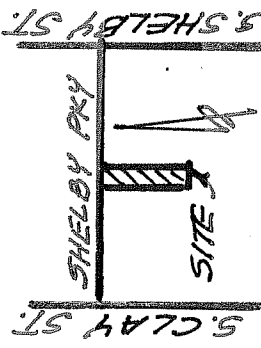


Scale: 1" = 20' Date: July 3rd, 2020

SITE PLAN

For: S & S Investment of KY., Inc.
714 SHELBY PARKWAY
BLOCK 23-E, Lot # 141
D.B. 11613, Pg. 219
Jefferson County, KY

C. R. P. & ASSOCIATES, INC.
7321 New La Grange Road, Suite 111
Louisville, KY 40222
(502) 423-8747



LOCATION MAP
N.T.S.