

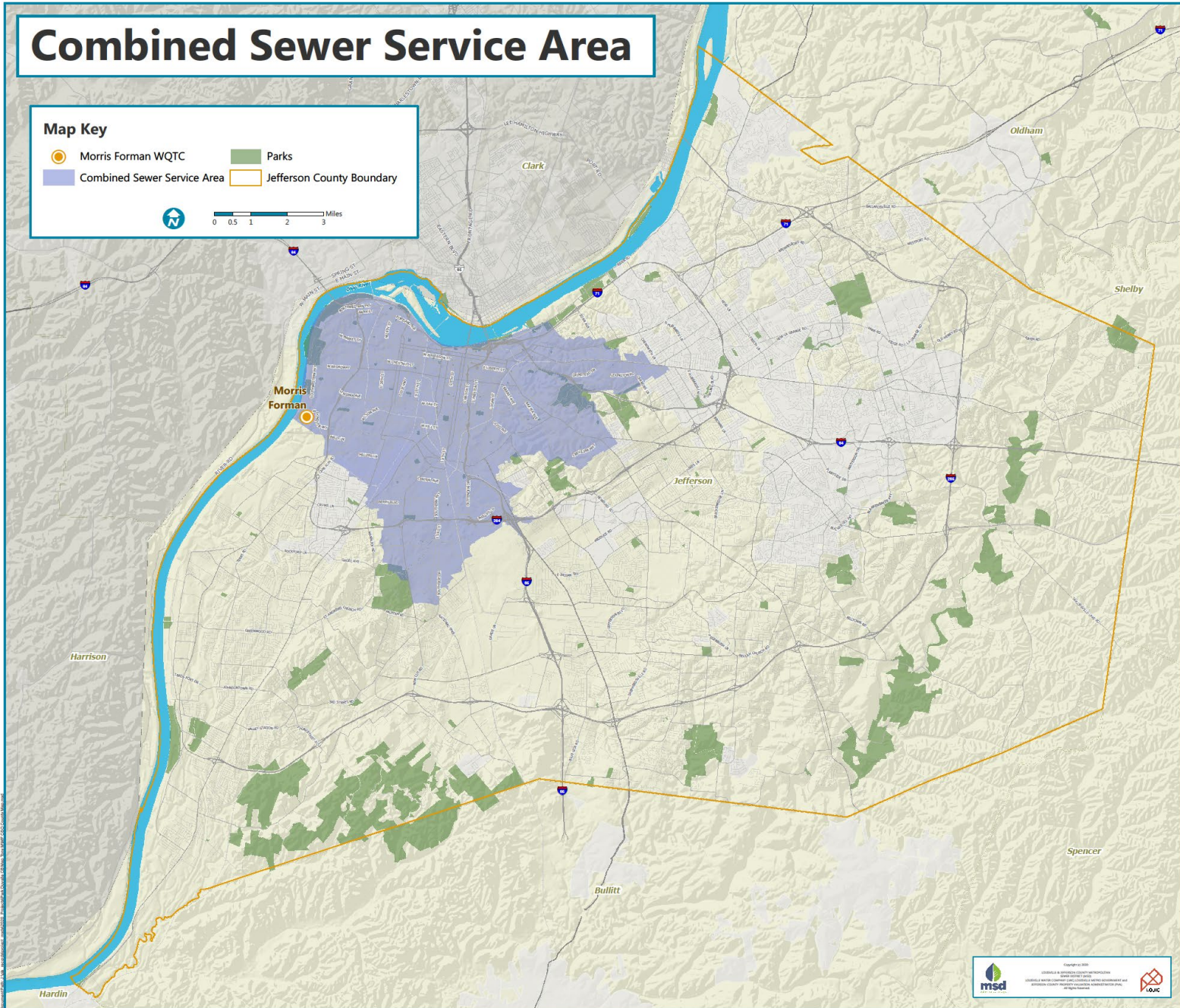
Combined Sewer Service Area

Map Key

-  Morris Forman WQTC
-  Parks
-  Combined Sewer Service Area
-  Jefferson County Boundary



0 0.5 1 2 3 Miles



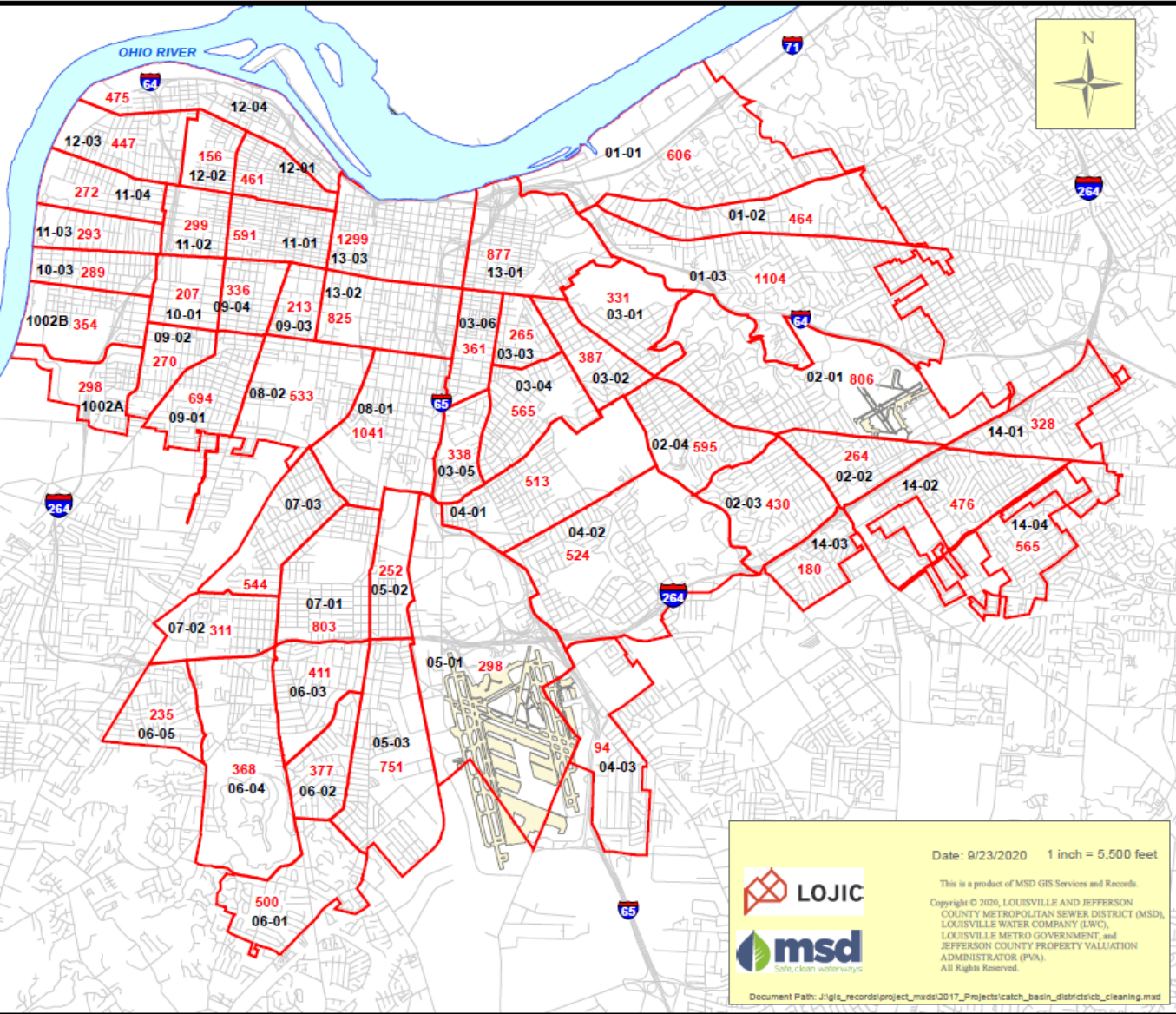
Catch Basin Cleaning Schedule

- Catch Basins are divided into 14 Districts
- Approximately 18 months to complete rotation through all Districts

DISTRICT	Number of Catch Basins
1	2,174
2	2,095
3	2,247
4	1,131
5	1,301
6	1,891
7	1,658
8	1,574
9	1,513
10	1,148
11	1,455
12	1,539
13	3,001
14	1,549
TOTAL	24,276

NUMBER OF CATCH BASINS PER DISTRICT AND SUB DISTRICT

DISTRICT	NUMBER OF CATCH BASINS
1	2174
2	2095
3	2247
4	1131
5	1301
6	1891
7	1858
8	1574
9	1513
10	1148
11	1455
12	1539
13	3001
14	1549
TOTAL	24,276



Date: 9/23/2020 1 inch = 5,600 feet

This is a product of MSD GIS Services and Records.

Copyright © 2020, LOUISVILLE AND JEFFERSON COUNTY METROPOLITAN SEWER DISTRICT (MSD), LOUISVILLE WATER COMPANY (LWC), LOUISVILLE METRO GOVERNMENT, and JEFFERSON COUNTY PROPERTY VALUATION ADMINISTRATOR (PVA). All Rights Reserved.

LOJIC

msd
Safe, clean waterways

Document Path: J:\gis_records\project_mxds\2017_Projects\catch_basin_districts\cb_cleaning.mxd

Parke DuValle Catch Basins

- 197 Catch Basins inspected
- 14 Catch Basins had missing plugs
 - All scheduled to be replaced by October 31st
- 88 Catch Basins are trapped
- 109 Catch Basins untrapped
 - Approximate cost to fix (each)- \$5,000 minimum



Park Duvalle Catch Basins



Map Key

- Study Area Boundary
- Catch Basin, Un-Trapped
- Catch Basin, Trapped
- Missing Plug



Aerial imagery provided by Google Earth Pro. Map data provided by Esri. All rights reserved.

Catch Basin Priorities

