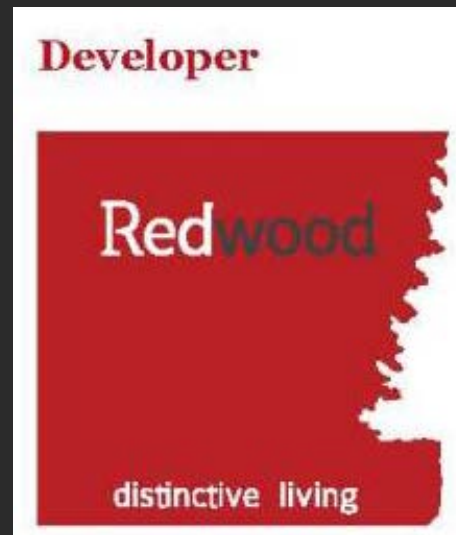


LOUISVILLE METRO PLANNING COMMISSION
JANUARY 29, 2015
(CONTINUED FROM DECEMBER 4, 2014)

DOCKET No. 14SUBDIV1009
CONSERVATION SUBDIVISION PLAN FOR
PROPERTY LOCATED AT 15528, 15310 &
15314 AIKEN ROAD TO BE KNOWN AS

STAPLETON RIDGE



ATTORNEYS:
BARDENWERPER
TALBOTT &
ROBERTS, PLLC

LAND
PLANNERS,
LANDSCAPE
ARCHITECTS &
ENGINEERS:
MINDEL, SCOTT
& ASSOCIATES,
INC.

INDEX

1. LOJIC Zoning Map
2. Aerial photographs of the site and surrounding area
3. Plan presented at the 12/4/14 Public Hearing
4. Current Development Plan
5. Development plan showing the undisturbed areas

TAB 1
LOJIC ZONING MAP



Historic Aerial

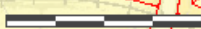
Lake Forest
Country Club

Forest Pointe
Woods

Lake Forest

Aiken Rd

Johnson Rd



Louisv

TAB 2

**AERIAL PHOTOGRAPH OF THE SITE AND
SURROUNDING AREA**



Lake Forest
Country Club

Forest Pointe
Woods

Lake Forest

Aiken Rd

Johnson Rd

AIKEN RD

BOONE TRL

JOHNSON RD



CLIP ART
AIKEN RD
ANNOUN PALMER BLVD
CLUB VISTA PL
FAIRWAY VILLAGE DR
N. GEESEY STATION RD
LAUDMARK DR
ASHGROVE PL
GOLDEN LEAP PL
GOLDEN LEAP WAY
GREENBRIAR PL

GROSSIM



Lake Forest
Country Club

Forest Pointe
Woods

Lake Forest

Aiken Rd

Johnson Rd

FLOYD'S FORK

TAB 3

**DEVELOPMENT PLAN PRESENTED AT THE
12/4/14 PUBLIC HEARING**

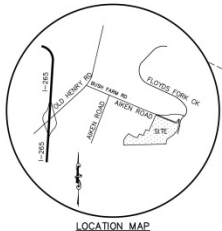
Plan presented at the December 4th Public Hearing



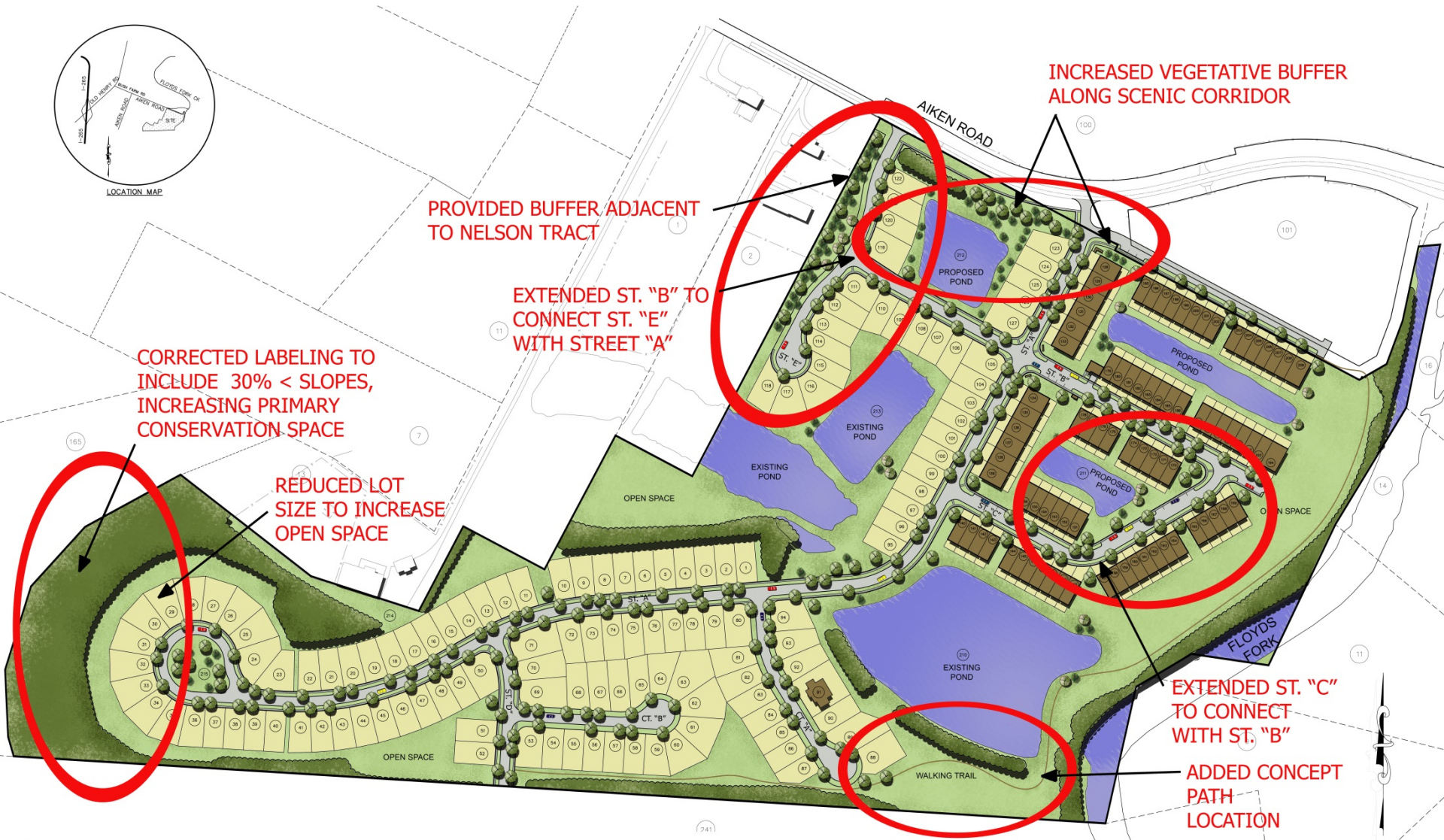
TAB 4
CURRENT DEVELOPMENT PLAN

Current plan, revised since previous public hearing.





LOCATION MAP



INCREASED VEGETATIVE BUFFER ALONG SCENIC CORRIDOR

PROVIDED BUFFER ADJACENT TO NELSON TRACT

EXTENDED ST. "B" TO CONNECT ST. "E" WITH STREET "A"

CORRECTED LABELING TO INCLUDE 30% < SLOPES, INCREASING PRIMARY CONSERVATION SPACE

REDUCED LOT SIZE TO INCREASE OPEN SPACE

EXTENDED ST. "C" TO CONNECT WITH ST. "B"

ADDED CONCEPT PATH LOCATION

STAPLETON RIDGE CONSERVATION SUBDIVISION

PLAN CHANGES SINCE 12/4/14 PUBLIC HEARING

Louisville, KY #3188

TAB 5

PLAN SHOWING UNDISTURBED AREAS

Undisturbed conservation areas in dark green

CONSERVATION AREA PROVIDED: 1,621,124 S.F. (54%)
■ UNDISTURBED CONSERVATION AREA: 981,127 S.F. (33%)

