



FORZA Architecture, Inc.

PARKING STUDY for JOINT PARKING

9.1.17 LDC 2006

A parking study is required when the applicant wishes to utilize the Joint Use Parking Provisions described in Section 9.1.6, 2006 LDC.

1. Joint Use Parking

- a. A description of each site's use(s) including a detailed calculation of its required/allowed parking, a listing of peak hour(s) of parking demand for each use and/or site, and an inventory of existing spaces on each site; and
- b. The results of at least three separate site surveys, conducted on different days, that depict the usage of the existing parking spaces hourly during the peak hours of usage and hourly four hours before and after that time. Site surveys are not needed for any portion of the period four hours before and after the peak hour in which the use is not in operation. One of the days surveyed should be the peak day or busiest day of operation, if one can be determined for the specific use(s); and
- c. Any other information requested by the Planning Director or the agency responsible for approval of off-street parking facilities.
- d. A map showing the location of on-street and off-street parking spaces used in the parking study. The map shall clearly delineate the location and number of spaces used in the study.

A parking survey was conducted at the surface parking lot located at 139 St. Matthews Ave., Aiken Family Dentistry, beginning Wednesday 10/5/22 thru Friday 10/7/22.

Aiken Family Dentistry

139 St. Matthews Ave.
Louisville, KY 40207

Parking Lot Size: 21 spaces

Hours of Operation

Sun	Closed
Mon	8:00 am – 5:00 pm
Tuesday	8:00 am – 5:00 pm
Wednesday	8:00 am – 5:00 pm
Thursday	8:00 am – 5:00 pm
Friday	9:00 am – 1:00 pm
Saturday	8:00 am – 12:00 pm

3,048 sq. ft. building

Parking for Office-Dental 1:250 (12 spaces min.) – 1:150 (20 spaces max.)

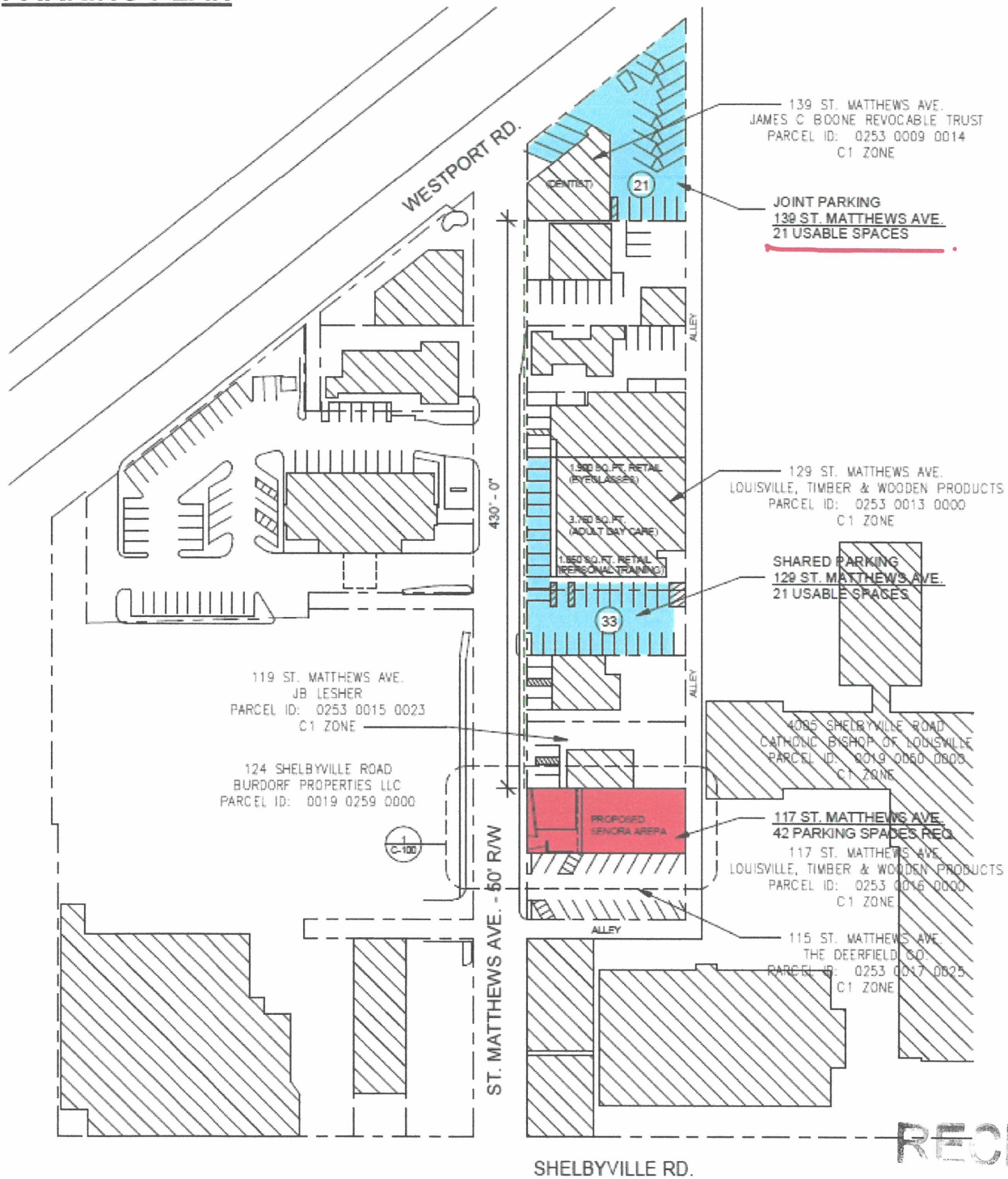
RECEIVED

OCT 17 2022

PLANNING & DESIGN
SERVICES

22-2868-0001

PARKING PLAN



RECEIVED

OCT 17 2022

PLANNING & DESIGN SERVICES

SURVEY

22-JR02-0001



FORZA Architecture, Inc.

Day 1 10/5 Wed			
129 St. Matthews Ave. # of spaces used		139 St. Matthews Ave. # of spaces used	
8:30am	2	8:30am	4
9:30am	4	9:30am	10
10:30am	3	10:30am	14
11:30am	3	11:30am	10
12:30pm	1	12:30pm	4
1:30pm	2	1:30pm	6
2:30pm	4	2:30pm	10
3:30pm	2	3:30pm	12
4:30pm	0	4:30pm	2
Day 2 10/6 Thurs			
139 St. Matthews Ave. # of spaces used		129 St. Matthews Ave. # of spaces used	
8:30am	4	8:30am	1
9:30am	8	9:30am	2
10:30am	12	10:30am	4
11:30am	12	11:30am	2
12:30pm	4	12:30pm	0
1:30pm	8	1:30pm	3
2:30pm	14	2:30pm	4
3:30pm	14	3:30pm	2
4:30pm	6	4:30pm	2
Day 3 10/7 Fri			
139 St. Matthews Ave. # of spaces used		129 St. Matthews Ave. # of spaces used	
8:30am	2	8:30am	0
9:30am	6	9:30am	2
10:30am	12	10:30am	2
11:30am	12	11:30am	3
12:30pm	4	12:30pm	0
1:30pm	8	1:30pm	0
2:30pm	8	2:30pm	2
3:30pm	10	3:30pm	2
4:30pm	4	4:30pm	0

Krebs Optical - 129 St. Matthews Ave.
Peak Day of Week: none
Peak Time of Day: none

Aiken Family Dentistry - 139 St. Matthews Ave.
Peak Day of Week: none
Peak Time of Day: none

RECEIVED

OCT 17 2022

PLANNING & DESIGN SERVICES

20-TRAC-0001



FORZA Architecture, Inc.

SHARED PARKING per Lease Agreement

We propose shared parking at both the 129 St. Matthews Ave. lot that serves the following addresses: 129-A, 129-C, and 129-D. 21 shared parking spaces are required on this lot. While 11 spaces can be utilized, the remainder of 10 can be utilized after Krebs Optical and the Adult Daycare closes and although there is some overlap in business operating times, we feel that the 2 additional spaces will be available based on the parking study.

121&129 St. Matthews Ave.	33 spaces available
Tenants:	
1,850 sq.ft. Personal Training @ 1:300	6 spaces required (hours vary)
3,750 sq.ft. Adult Day Care @ 1 per emp.	8 spaces required (closes at 5:00 pm)
1,900 sq.ft. Eyeglass Shop @ 1:250	8 spaces required (Closes at 5:30 pm)
	22 spaces required (11 usable for Senora Arepa)

Senora Arepa
117 St. Matthews Ave.
Louisville, KY 40207

Hours of Operation

Sun	Closed
Mon	Closed
Tuesday	5:00 pm –10:00 pm
Wednesday	5:00 pm –10:00 pm
Thursday	5:00 pm –10:00 pm
Friday	5:00 pm –10:00 pm
Saturday	5:00 pm –10:00 pm

RECEIVED

OCT 17 2022

PLANNING & DESIGN
SERVICES

Krebs Optical

129-A St. Matthews Ave.
Louisville, KY 40207

Hours of Operation

Sunday Closed
Mon 9:30 am – 5:30 pm
Tuesday 9:30 am – 5:30 pm
Wednesday 9:30 am – 5:30 pm
Thursday 9:30 am – 5:30 pm
Friday 9:30 am – 5:30 pm
Saturday 9:30 am – 1:00 pm

1,900 sq. ft. Optometrist

1:250 (8 spaces min.) – 1:150 (13 spaces max.)

Adult Daycare

129-C St. Matthews Ave.
Louisville, KY 40207

Hours of Operation

Sunday Closed
Mon 8:00 am – 5:00 pm
Tuesday 8:00 am – 5:00 pm
Wednesday 8:00 am – 5:00 pm
Thursday 8:00 am – 5:00 pm
Friday 8:00 am – 5:00 pm

3,750 sq. ft. 1:per employee

(8 spaces min.)

HomeFit

129-D St. Matthews Ave.
Louisville, KY 40207

Hours of Operation

Sunday open 24 hours
Mon open 24 hours
Tuesday open 24 hours
Wednesday open 24 hours
Thursday open 24 hours
Friday open 24 hours
Saturday open 24 hours

1,850 sq. ft. Fitness

1:300 (6 spaces min.) – 1:100 (19 spaces max.)

RECEIVED

OCT 17 2022

PLANNING & DESIGN
SERVICES

22 JPR-001

PARKING SURVEY

Day 1 10/5 Wed			
129 St. Matthews Ave.		139 St. Matthews Ave.	
# of spaces used		# of spaces used	
8:30am	2	8:30am	4
9:30am	4	9:30am	10
10:30am	3	10:30am	14
11:30am	3	11:30am	10
12:30pm	1	12:30pm	4
1:30pm	2	1:30pm	6
2:30pm	4	2:30pm	10
3:30pm	2	3:30pm	12
4:30pm	0	4:30pm	2
Day 2 10/6 Thurs			
139 St. Matthews Ave.		129 St. Matthews Ave.	
# of spaces used		# of spaces used	
8:30am	4	8:30am	1
9:30am	8	9:30am	2
10:30am	12	10:30am	4
11:30am	12	11:30am	2
12:30pm	4	12:30pm	0
1:30pm	8	1:30pm	3
2:30pm	14	2:30pm	4
3:30pm	14	3:30pm	2
4:30pm	6	4:30pm	2
Day 3 10/7 Fri			
139 St. Matthews Ave.		129 St. Matthews Ave.	
# of spaces used		# of spaces used	
8:30am	2	8:30am	0
9:30am	6	9:30am	2
10:30am	12	10:30am	2
11:30am	12	11:30am	3
12:30pm	4	12:30pm	0
1:30pm	8	1:30pm	0
2:30pm	8	2:30pm	2
3:30pm	10	3:30pm	2
4:30pm	4	4:30pm	0

Krebs Optical - 129 St. Matthews Ave.
 Peak Day of Week: none
 Peak Time of Day: none

Aiken Family Dentistry - 139 St. Matthews Ave.
 Peak Day of Week: none
 Peak Time of Day: none

RECEIVED

OCT 17 2022

PLANNING & DESIGN SERVICES

654 S. Shelby Street, Suite 301 Louisville, KY 40202
 502.896.1328 V 502.212.6327 F
 www.forzaarchitecture.com

Handwritten signature in red ink