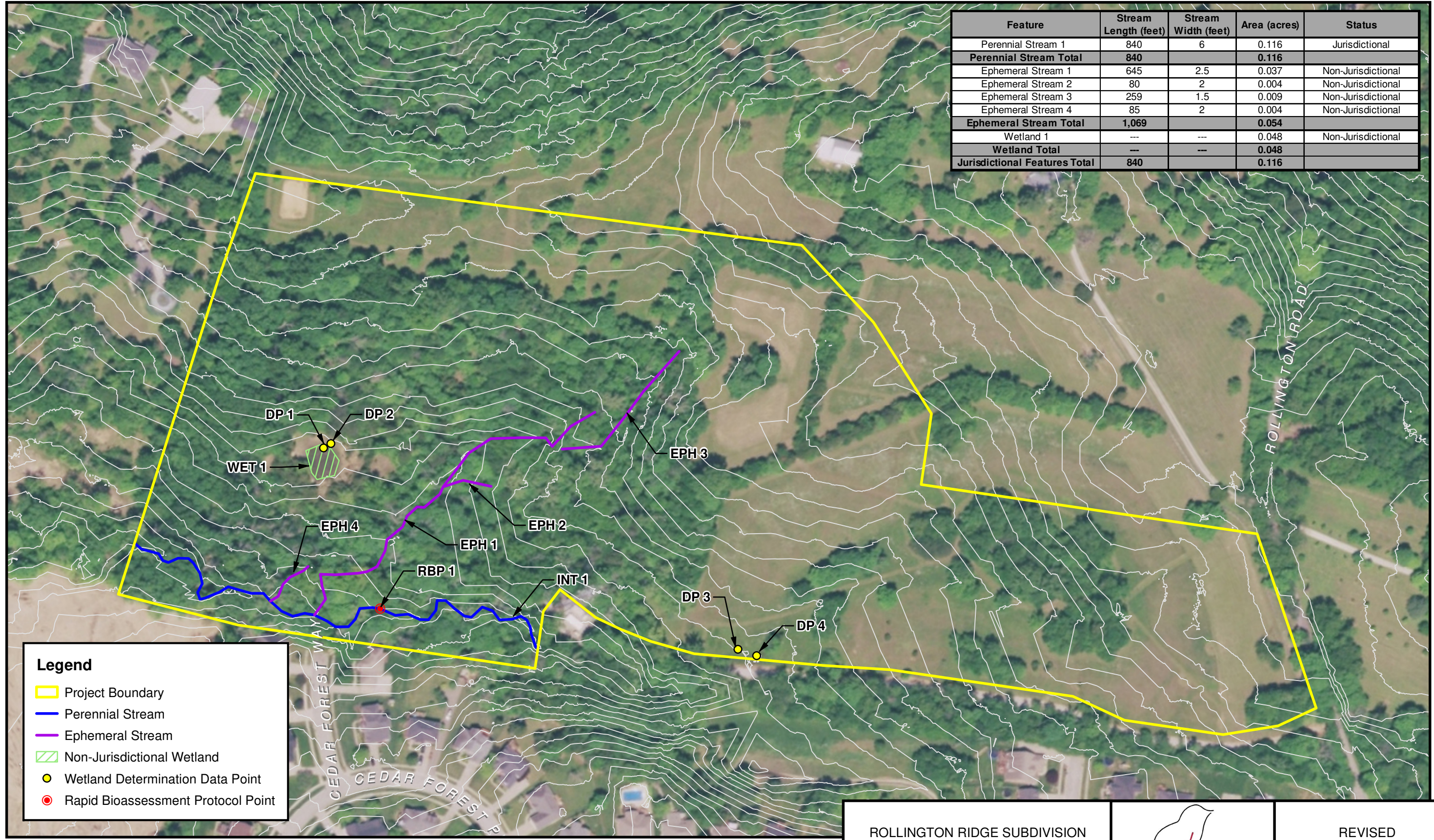


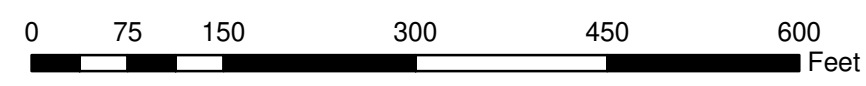
Source: Aerial - 60cm color orthoimagery of the Commonwealth of Kentucky (NAIP-FSA) from kygisserver.ky.gov ArcGIS services (2016).

Feature	Stream Length (feet)	Stream Width (feet)	Area (acres)	Status
Perennial Stream 1	840	6	0.116	Jurisdictional
Perennial Stream Total	840		0.116	
Ephemeral Stream 1	645	2.5	0.037	Non-Jurisdictional
Ephemeral Stream 2	80	2	0.004	Non-Jurisdictional
Ephemeral Stream 3	259	1.5	0.009	Non-Jurisdictional
Ephemeral Stream 4	85	2	0.004	Non-Jurisdictional
Ephemeral Stream Total	1,069		0.054	
Wetland 1	---	---	0.048	Non-Jurisdictional
Wetland Total	---	---	0.048	
Jurisdictional Features Total	840		0.116	



Legend

- Project Boundary
- Perennial Stream
- Ephemeral Stream
- Non-Jurisdictional Wetland
- Wetland Determination Data Point
- Rapid Bioassessment Protocol Point



NOTE: JURISDICTIONAL WATER/WETLAND BOUNDARIES WERE DELINEATED AND SURVEYED BY REDWING WETLAND SCIENTISTS ON JUNE 12, 2020. THESE BOUNDARIES HAVE NOT BEEN VERIFIED BY THE U.S. ARMY CORPS OF ENGINEERS. USE OF THIS MAP IS FOR PRELIMINARY PLANNING PURPOSES ONLY.



ROLLINGTON RIDGE SUBDIVISION
JEFFERSON AND OLDHAM
COUNTIES, KENTUCKY

REVISED DATE: 11-17-20 | DRAWN BY: JMD/EDB



REVISED
WATER/WETLAND
LOCATION MAP

FIGURE 3-R

P:\2020 Projects\20-021-RollingtonRidge\Figures\Water\Wetland Map.mxd, 11-17-2020, ebowman