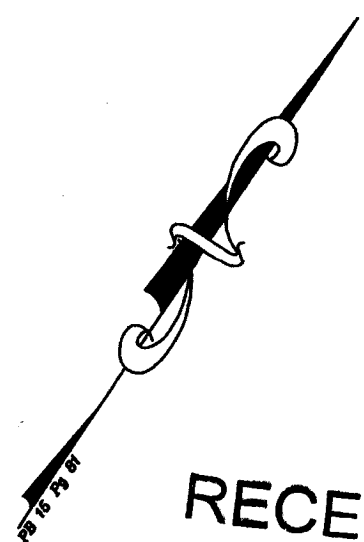
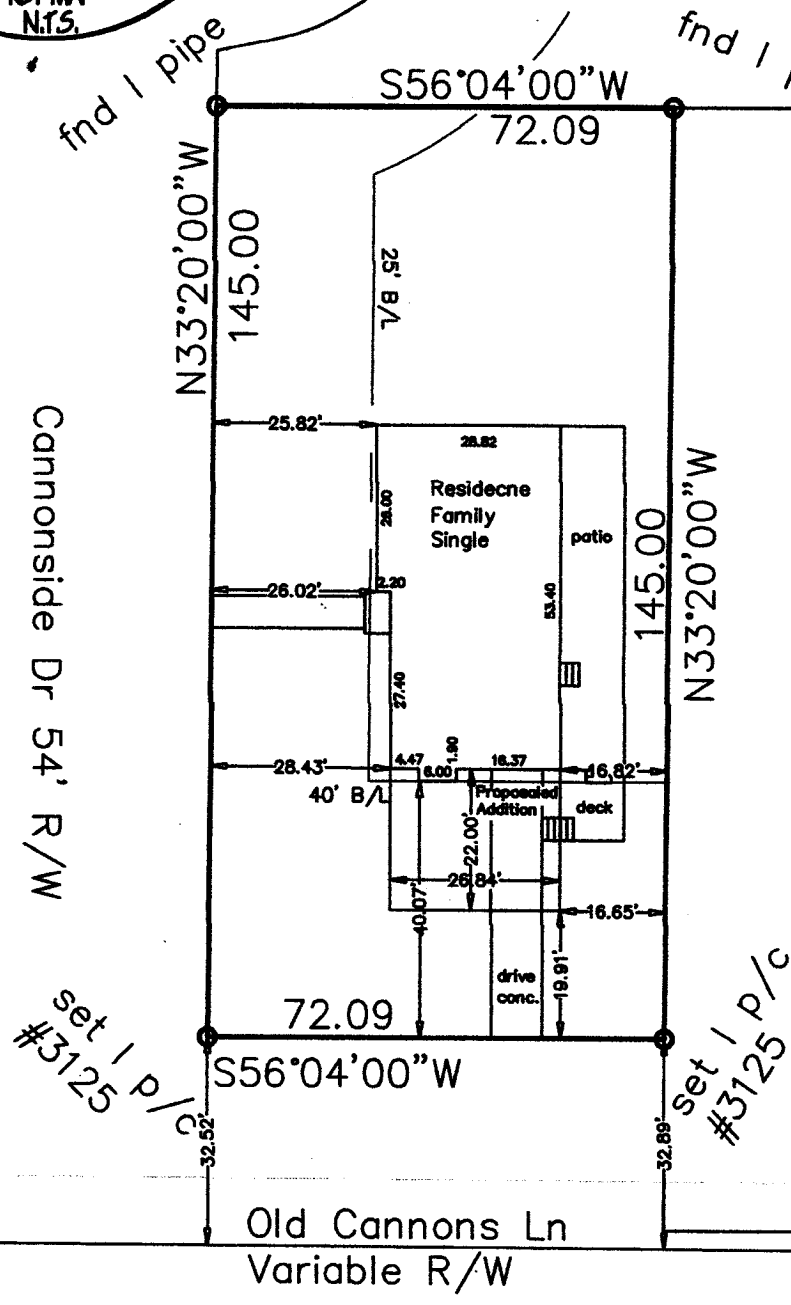
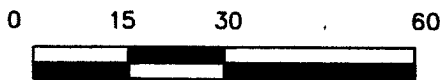


Gilde
DB 10415 Pg 408

Buecker
DB 10490 Pg 418



RECEIVED
AUG 14 2017
PLANNING &
DESIGN SERVICES



GRAPHIC SCALE 1=30

LAND SURVEYOR'S CERTIFICATE -

I hereby certify that this plat and survey were made under my direct supervision on 8-9-17 and that the angular and linear measurements, as witnessed by monuments, shown hereon, are true and correct to the best of my knowledge and belief.
- SURVEY CLASS "Urban" -
This survey meets or exceeds the minimum standards of governing authorities.



Michael D. Seely
Licensed Land Surveyor #3125

MIKE SEELY & ASSOCIATES
P.O. BOX 18768
LOUISVILLE, KY. 40261
(502) 643-1785

- BOUNDARY SURVEY -

FOR: Ashley Distler
LOCATION: 809 Cannonside Dr
Louisville, KY 40207
RECORD SOURCES: ~16 Cannonside
PB 15 Pg 81
WB 661 Pg 526
COUNTY: JEFFERSON
SCALE: 1=30 DATE: 8-9-17