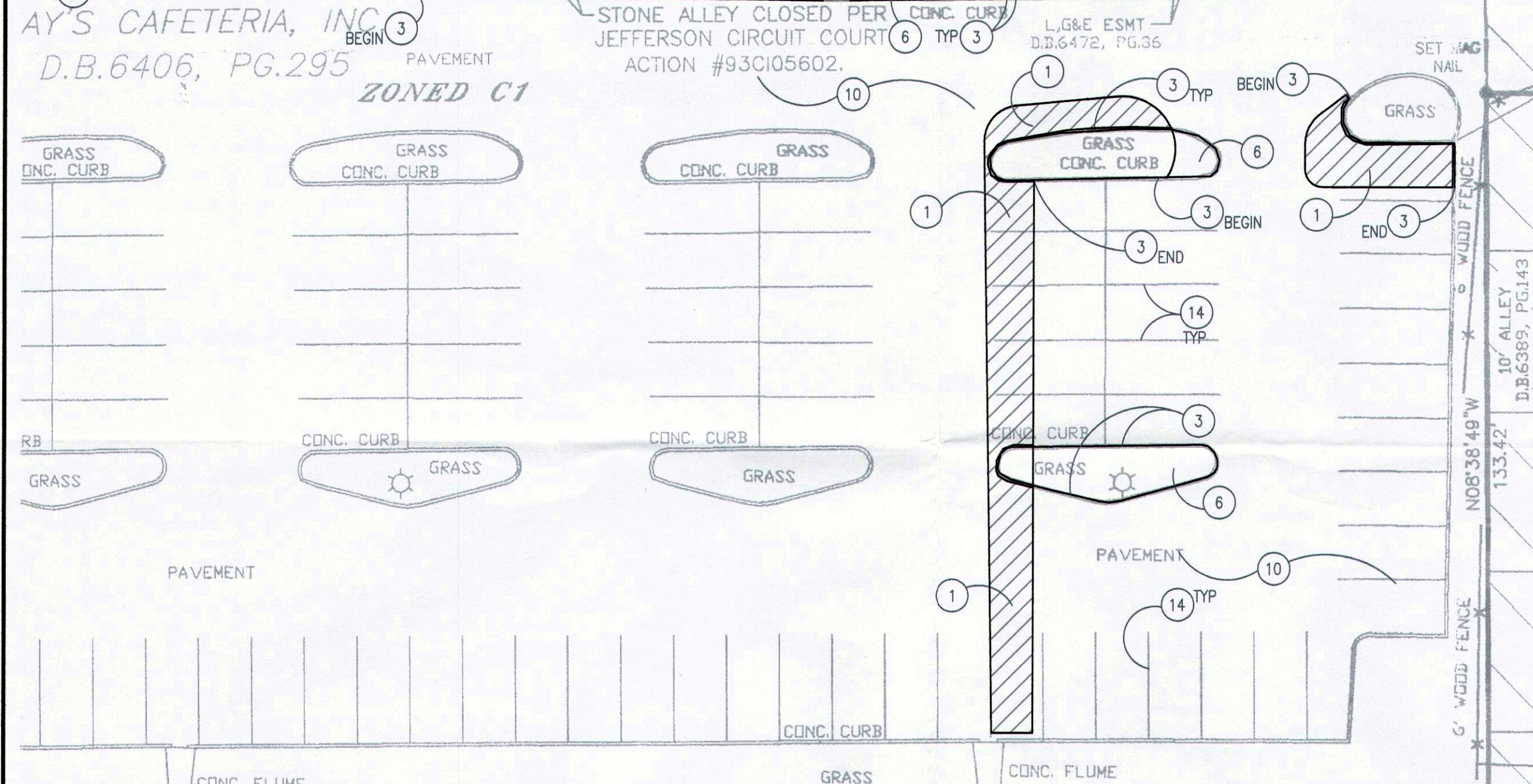
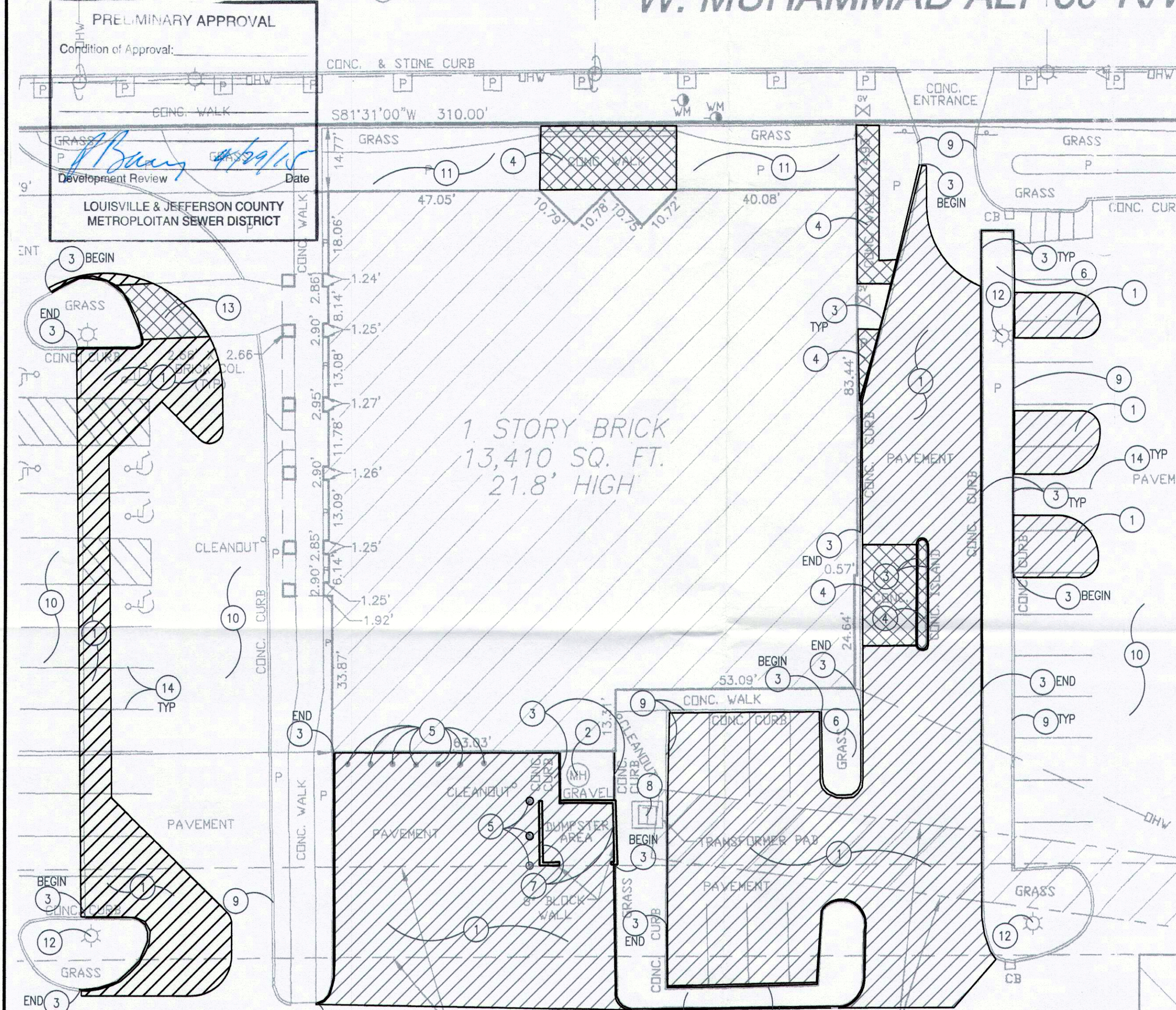


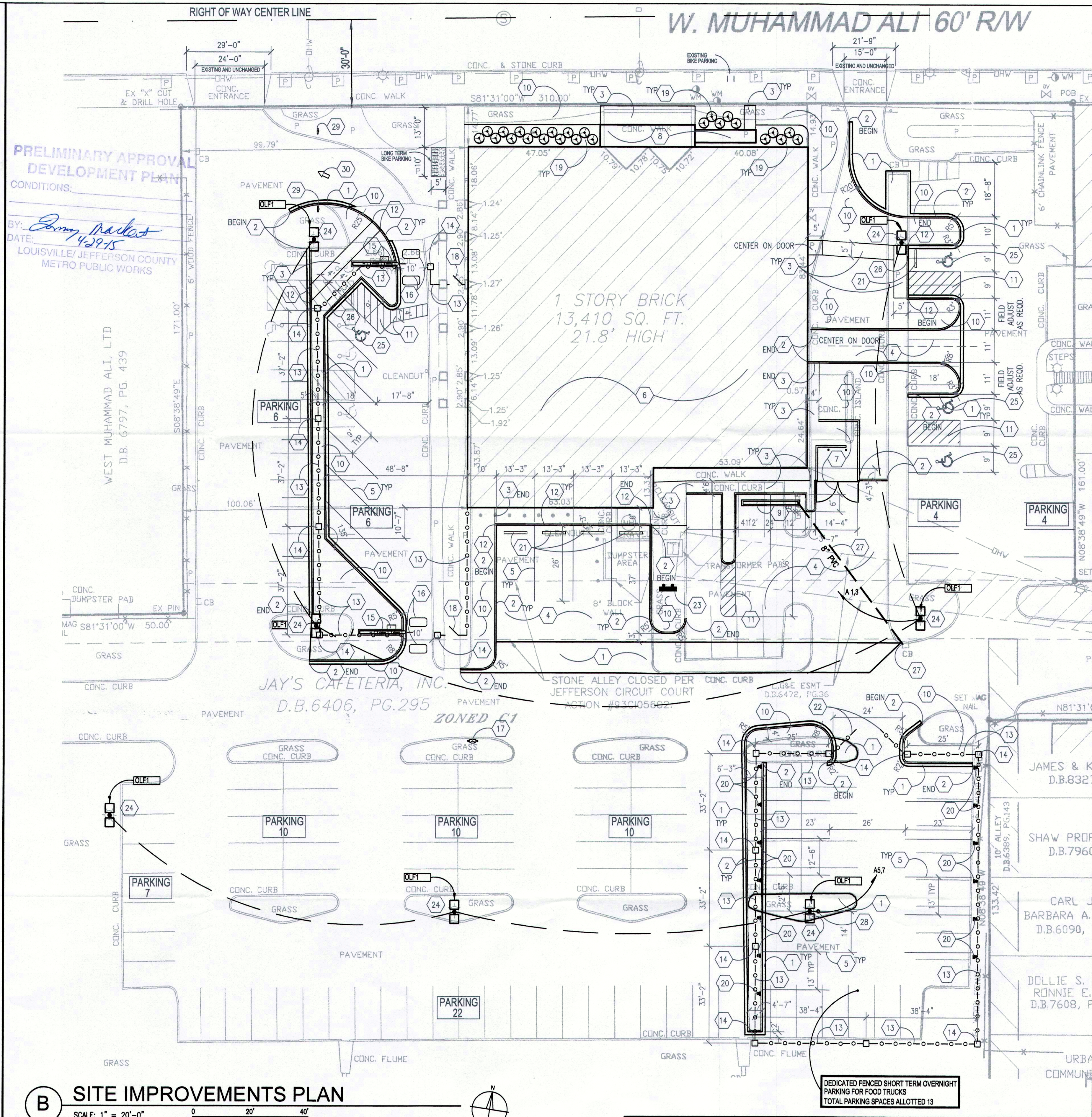
# W. MUHAMMAD ALI 60' RW



**(A) SITE DEMOLITION PLAN**  
SCALE: 1" = 20'-0"

**(B) SITE IMPROVEMENTS PLAN**  
SCALE: 1" = 20'-0"

DEMOLITION GENERAL NOTES		DEMOLITION KEYED NOTES	
A. ALL MATERIALS TO BE REMOVED AND NOT TURNED OVER TO THE OWNER ARE TO BE DISPOSED OF IN AN APPROVED LANDFILL.	B. CONTRACTOR IS RESPONSIBLE FOR DAMAGE TO ANY STRUCTURE, ELEVATION, SEE SITE IMPROVEMENTS PLAN.	1. BITUMINOUS PAVEMENT AND BASE, AS INDICATED BY HATCH PATTERN, TO BE SAW-CUT AND REMOVED.	3. EXISTING CURBING TO REMAIN AND BE PROTECTED THROUGHOUT ALL CONSTRUCTION ACTIVITIES.
C. ALL UTILITIES TO REMAIN ARE TO BE PROTECTED THROUGHOUT CONSTRUCTION ACTIVITIES. ALL UTILITIES TO BE REMOVED OR CAPPED ARE TO BE DONE SO IN ACCORDANCE WITH THE GOVERNING AGENCY SPECIFICATIONS AND ARE TO BE COORDINATED WITH THE GOVERNING AGENCY.	D. CONTRACTOR IS TO EXERCISE EXTREME CAUTION WHEN WORKING NEAR EXISTING UTILITY LINES. THE LOCATION AND ELEVATIONS OF THE EXISTING UTILITIES ARE BASED ON THE RECORDS OF THE MEASUREMENTS TAKEN IN THE FIELD. THE EXISTING UTILITY INFORMATION IS NOT TO BE TAKEN AS EXACT OR COMPLETE. THE CONTRACTOR MUST NOTIFY THE UTILITY COMPANIES AND APPROPRIATE AGENCIES AT LEAST 72 HOURS BEFORE EXCAVATION FOR EXACT FIELD LOCATIONS. IT IS THE CONTRACTOR'S RESPONSIBILITY TO RELOCATE ALL UTILITIES WHICH CONFLICT WITH THE PROPOSED IMPROVEMENTS. DAL 811 TO CONTACT B.U.D. FOR LOCATION OF EXISTING UTILITIES.	E. CONCRETE CURB TO BE SAW-CUT AND REMOVED.	4. CONCRETE PAVEMENT, AS INDICATED BY CROSS-HATCH PATTERN, TO BE SAW-CUT AND REMOVED.
F. CONTRACTOR IS TO EXERCISE EXTREME CAUTION WHEN WORKING NEAR EXISTING UTILITY LINES. THE LOCATION AND ELEVATIONS OF THE EXISTING UTILITIES ARE BASED ON THE RECORDS OF THE MEASUREMENTS TAKEN IN THE FIELD. THE EXISTING UTILITY INFORMATION IS NOT TO BE TAKEN AS EXACT OR COMPLETE. THE CONTRACTOR MUST NOTIFY THE UTILITY COMPANIES AND APPROPRIATE AGENCIES AT LEAST 72 HOURS BEFORE EXCAVATION FOR EXACT FIELD LOCATIONS. IT IS THE CONTRACTOR'S RESPONSIBILITY TO RELOCATE ALL UTILITIES WHICH CONFLICT WITH THE PROPOSED IMPROVEMENTS. DAL 811 TO CONTACT B.U.D. FOR LOCATION OF EXISTING UTILITIES.	G. CONTRACTOR IS TO EXERCISE EXTREME CAUTION WHEN WORKING NEAR EXISTING UTILITY LINES. THE LOCATION AND ELEVATIONS OF THE EXISTING UTILITIES ARE BASED ON THE RECORDS OF THE MEASUREMENTS TAKEN IN THE FIELD. THE EXISTING UTILITY INFORMATION IS NOT TO BE TAKEN AS EXACT OR COMPLETE. THE CONTRACTOR MUST NOTIFY THE UTILITY COMPANIES AND APPROPRIATE AGENCIES AT LEAST 72 HOURS BEFORE EXCAVATION FOR EXACT FIELD LOCATIONS. IT IS THE CONTRACTOR'S RESPONSIBILITY TO RELOCATE ALL UTILITIES WHICH CONFLICT WITH THE PROPOSED IMPROVEMENTS. DAL 811 TO CONTACT B.U.D. FOR LOCATION OF EXISTING UTILITIES.	H. CONCRETE CURB TO BE SAW-CUT AND REMOVED.	5. PIPE BOLLARD TO BE REMOVED.
		I. CONCRETE CURB TO BE SAW-CUT AND REMOVED.	6. BLOCK WALL TO BE REMOVED. FOUNDATION OF WALL TO BE REMOVED AS REQUIRED TO INSTALL PROPOSED PAVEMENT AND BASE.
		J. CONCRETE CURB TO BE SAW-CUT AND REMOVED.	7. ELECTRIC TRANSFORMER TO REMAIN AND BE PROTECTED THROUGHOUT ALL CONSTRUCTION ACTIVITIES.
		K. CONCRETE CURB TO BE SAW-CUT AND REMOVED.	8. CONCRETE CURB TO BE SAW-CUT AND REMOVED.
		L. CONCRETE CURB TO BE SAW-CUT AND REMOVED.	
		M. CONCRETE CURB TO BE SAW-CUT AND REMOVED.	
		N. CONCRETE CURB TO BE SAW-CUT AND REMOVED.	
		O. CONCRETE CURB TO BE SAW-CUT AND REMOVED.	
		P. CONCRETE CURB TO BE SAW-CUT AND REMOVED.	
		Q. CONCRETE CURB TO BE SAW-CUT AND REMOVED.	
		R. CONCRETE CURB TO BE SAW-CUT AND REMOVED.	
		S. CONCRETE CURB TO BE SAW-CUT AND REMOVED.	
		T. CONCRETE CURB TO BE SAW-CUT AND REMOVED.	
		U. CONCRETE CURB TO BE SAW-CUT AND REMOVED.	
		V. CONCRETE CURB TO BE SAW-CUT AND REMOVED.	
		W. CONCRETE CURB TO BE SAW-CUT AND REMOVED.	
		X. CONCRETE CURB TO BE SAW-CUT AND REMOVED.	
		Y. CONCRETE CURB TO BE SAW-CUT AND REMOVED.	
		Z. CONCRETE CURB TO BE SAW-CUT AND REMOVED.	



VICINITY MAP		IMPROVEMENTS GENERAL NOTES	
		A. ALL DIMENSIONS ARE TO THE FACE OF CURB AND/OR BUILDING FACE, UNLESS OTHERWISE NOTED.	G. ALL AREAS DISTURBED AS A RESULT OF CONSTRUCTION OF THIS PROJECT AND NOT NOTED TO BE PAVED OR BE LANDSCAPED SHALL RECEIVE A MINIMUM OF 4" OF GOOD CLEAN WEED-FREE TOPSOIL AND BE SOILED. PROVIDE WATER UNTIL GRASS IS ESTABLISHED.
		B. EXPANSION JOINT REQUIRED WHERE NEW CONCRETE ABUTS EXISTING CONCRETE, BUILDINGS, FOUNDATIONS, AND ANY OTHER FIXED OBJECTS PER DETAIL D/C-102.	H. COORDINATE SITE LIGHTING AND POWER REQUIREMENTS WITH ELECTRICAL SHEETS.
		C. CONTRACTOR TO MAINTAIN TRAFFIC FLOW USING BARRIERS, CONES, SIGNAGE AND OTHER DEVICES IN ACCORDANCE WITH KYDOT GUIDELINES FOR TRAFFIC CONTROL IN WORK ZONES.	I. CONTRACTOR IS RESPONSIBLE FOR DAMAGE TO ANY STRUCTURE, PAVEMENT, UTILITY, ETC. TO REMAIN AND SHALL REPAIR ALL DAMAGE AS THE RESULT OF THE CONSTRUCTION OF THIS PROJECT.
		D. COORDINATE ALL WORK AROUND EXISTING UTILITY POLES / GUY WIRES WITH LOCAL UTILITY COMPANY HAVING JURISDICTION.	J. CONTRACTOR IS TO ENSURE THAT ALL EROSION CONTROL MATERIALS ARE IN PLACE PRIOR TO ANY DEMOLITION.
		E. CONTRACTOR IS CAUTIONED CONCERNING EXISTING UNDERGROUND UTILITIES IN THE UTILITY EASEMENTS SURROUNDING AND ON THE SITE. CONTRACTOR IS TO EXERCISE EXTREME CAUTION WHEN WORKING NEAR EXISTING UTILITY LINES. THE LOCATION AND ELEVATIONS OF THE EXISTING UTILITIES ARE BASED ON THE RECORDS OF THE MEASUREMENTS TAKEN IN THE FIELD. THE EXISTING UTILITY INFORMATION IS NOT TO BE TAKEN AS EXACT OR COMPLETE. THE CONTRACTOR MUST NOTIFY THE UTILITY COMPANIES AND APPROPRIATE AGENCIES AT LEAST 72 HOURS BEFORE EXCAVATION FOR EXACT FIELD LOCATIONS. IT IS THE CONTRACTOR'S RESPONSIBILITY TO RELOCATE ALL UTILITIES WHICH CONFLICT WITH THE PROPOSED IMPROVEMENTS. DAL 811 TO CONTACT B.U.D. FOR LOCATION OF EXISTING UTILITIES. ANY DAMAGE TO ANY EXISTING UTILITIES IS TO BE REPAIRED TO THE SATISFACTION OF THE AGENCY HAVING JURISDICTION WITH THE COST BEING INCIDENTAL TO THE CONTRACT AMOUNT.	K. CONTRACTOR TO DOCUMENT LOCATIONS OF ANY AND ALL FOUND UTILITIES AND MISCELLANEOUS UNDERGROUND UTILITIES.
		F. CONTRACTOR TO MAINTAIN TRAFFIC FLOW USING BARRIERS, CONES, SIGNAGE AND OTHER DEVICES IN ACCORDANCE WITH KYDOT GUIDELINES FOR TRAFFIC CONTROL IN WORK ZONES.	L. KYDOT STANDARD SPECIFICATIONS ARE PART OF THIS PLAN, AND ARE READILY AVAILABLE AT <a href="http://transportation.ky.gov/">http://transportation.ky.gov/</a> .
		G. CONTRACTOR TO MAINTAIN TRAFFIC FLOW USING BARRIERS, CONES, SIGNAGE AND OTHER DEVICES IN ACCORDANCE WITH KYDOT GUIDELINES FOR TRAFFIC CONTROL IN WORK ZONES.	M. CONTRACTOR TO PROVIDE POSITIVE DRAINAGE AWAY FROM ALL BUILDINGS, AND THROUGH ALL PLANT BEDS, LAWNS, AND PAVEMENT. ALL PROPOSED WALKS / DRIVES ARE TO BE FINISHED WITH BUILDING ENTRY. IN NO CASE IS THE FINISHED GRADE TO BE HIGHER THAN THE FINISHED FLOOR ELEVATION. ALL ADA PARKING SPACES, LOADING ZONES AND ACCESSIBLE ROUTES MAY NOT EXCEED A 2% SLOPE IN ANY DIRECTION.
		H. CONTRACTOR TO MAINTAIN TRAFFIC FLOW USING BARRIERS, CONES, SIGNAGE AND OTHER DEVICES IN ACCORDANCE WITH KYDOT GUIDELINES FOR TRAFFIC CONTROL IN WORK ZONES.	N. PROVIDE STONE BACKFILL ASPHALT PATCHING AS NECESSARY TO INSTALL UTILITY CONDUITS AND SITE IMPROVEMENTS.
		I. CONTRACTOR TO MAINTAIN TRAFFIC FLOW USING BARRIERS, CONES, SIGNAGE AND OTHER DEVICES IN ACCORDANCE WITH KYDOT GUIDELINES FOR TRAFFIC CONTROL IN WORK ZONES.	O. PROVIDE A MINIMUM OF 4" OF GOOD CLEAN WEEDFREE TOPSOIL AND SOIL ALL AREAS DISTURBED AND NOT PAVED.
		J. CONTRACTOR TO MAINTAIN TRAFFIC FLOW USING BARRIERS, CONES, SIGNAGE AND OTHER DEVICES IN ACCORDANCE WITH KYDOT GUIDELINES FOR TRAFFIC CONTROL IN WORK ZONES.	P. PROVIDE 3" DEEP SHREDED HARDWOOD MULCH BED.
		K. CONTRACTOR TO MAINTAIN TRAFFIC FLOW USING BARRIERS, CONES, SIGNAGE AND OTHER DEVICES IN ACCORDANCE WITH KYDOT GUIDELINES FOR TRAFFIC CONTROL IN WORK ZONES.	Q. PROVIDE A MINIMUM OF 4" OF GOOD CLEAN WEEDFREE TOPSOIL AND SOIL ALL AREAS DISTURBED AND NOT PAVED.
		L. CONTRACTOR TO MAINTAIN TRAFFIC FLOW USING BARRIERS, CONES, SIGNAGE AND OTHER DEVICES IN ACCORDANCE WITH KYDOT GUIDELINES FOR TRAFFIC CONTROL IN WORK ZONES.	R. PROVIDE 3" DEEP SHREDED HARDWOOD MULCH BED.
		M. CONTRACTOR TO MAINTAIN TRAFFIC FLOW USING BARRIERS, CONES, SIGNAGE AND OTHER DEVICES IN ACCORDANCE WITH KYDOT GUIDELINES FOR TRAFFIC CONTROL IN WORK ZONES.	S. PROVIDE A MINIMUM OF 4" OF GOOD CLEAN WEEDFREE TOPSOIL AND SOIL ALL AREAS DISTURBED AND NOT PAVED.
		N. CONTRACTOR TO MAINTAIN TRAFFIC FLOW USING BARRIERS, CONES, SIGNAGE AND OTHER DEVICES IN ACCORDANCE WITH KYDOT GUIDELINES FOR TRAFFIC CONTROL IN WORK ZONES.	T. PROVIDE 3" DEEP SHREDED HARDWOOD MULCH BED.
		O. CONTRACTOR TO MAINTAIN TRAFFIC FLOW USING BARRIERS, CONES, SIGNAGE AND OTHER DEVICES IN ACCORDANCE WITH KYDOT GUIDELINES FOR TRAFFIC CONTROL IN WORK ZONES.	U. PROVIDE A MINIMUM OF 4" OF GOOD CLEAN WEEDFREE TOPSOIL AND SOIL ALL AREAS DISTURBED AND NOT PAVED.
		P. CONTRACTOR TO MAINTAIN TRAFFIC FLOW USING BARRIERS, CONES, SIGNAGE AND OTHER DEVICES IN ACCORDANCE WITH KYDOT GUIDELINES FOR TRAFFIC CONTROL IN WORK ZONES.	V. PROVIDE 3" DEEP SHREDED HARDWOOD MULCH BED.
		Q. CONTRACTOR TO MAINTAIN TRAFFIC FLOW USING BARRIERS, CONES, SIGNAGE AND OTHER DEVICES IN ACCORDANCE WITH KYDOT GUIDELINES FOR TRAFFIC CONTROL IN WORK ZONES.	W. PROVIDE A MINIMUM OF 4" OF GOOD CLEAN WEEDFREE TOPSOIL AND SOIL ALL AREAS DISTURBED AND NOT PAVED.
		R. CONTRACTOR TO MAINTAIN TRAFFIC FLOW USING BARRIERS, CONES, SIGNAGE AND OTHER DEVICES IN ACCORDANCE WITH KYDOT GUIDELINES FOR TRAFFIC CONTROL IN WORK ZONES.	X. PROVIDE 3" DEEP SHREDED HARDWOOD MULCH BED.
		S. CONTRACTOR TO MAINTAIN TRAFFIC FLOW USING BARRIERS, CONES, SIGNAGE AND OTHER DEVICES IN ACCORDANCE WITH KYDOT GUIDELINES FOR TRAFFIC CONTROL IN WORK ZONES.	Y. PROVIDE A MINIMUM OF 4" OF GOOD CLEAN WEEDFREE TOPSOIL AND SOIL ALL AREAS DISTURBED AND NOT PAVED.
		T. CONTRACTOR TO MAINTAIN TRAFFIC FLOW USING BARRIERS, CONES, SIGNAGE AND OTHER DEVICES IN ACCORDANCE WITH KYDOT GUIDELINES FOR TRAFFIC CONTROL IN WORK ZONES.	Z. PROVIDE 3" DEEP SHREDED HARDWOOD MULCH BED.
		U. CONTRACTOR TO MAINTAIN TRAFFIC FLOW USING BARRIERS, CONES, SIGNAGE AND OTHER DEVICES IN ACCORDANCE WITH KYDOT GUIDELINES FOR TRAFFIC CONTROL IN WORK ZONES.	
		V. CONTRACTOR TO MAINTAIN TRAFFIC FLOW USING BARRIERS, CONES, SIGNAGE AND OTHER DEVICES IN ACCORDANCE WITH KYDOT GUIDELINES FOR TRAFFIC CONTROL IN WORK ZONES.	
		W. CONTRACTOR TO MAINTAIN TRAFFIC FLOW USING BARRIERS, CONES, SIGNAGE AND OTHER DEVICES IN ACCORDANCE WITH KYDOT GUIDELINES FOR TRAFFIC CONTROL IN WORK ZONES.	
		X. CONTRACTOR TO MAINTAIN TRAFFIC FLOW USING BARRIERS, CONES, SIGNAGE AND OTHER DEVICES IN ACCORDANCE WITH KYDOT GUIDELINES FOR TRAFFIC CONTROL IN WORK ZONES.	
		Y. CONTRACTOR TO MAINTAIN TRAFFIC FLOW USING BARRIERS, CONES, SIGNAGE AND OTHER DEVICES IN ACCORDANCE WITH KYDOT GUIDELINES FOR TRAFFIC CONTROL IN WORK ZONES.	
		Z. CONTRACTOR TO MAINTAIN TRAFFIC FLOW USING BARRIERS, CONES, SIGNAGE AND OTHER DEVICES IN ACCORDANCE WITH KYDOT GUIDELINES FOR TRAFFIC CONTROL IN WORK ZONES.	

**CMW**  
The Shape of Ideas

Architecture  
Interior Design  
Engineering  
Landscape Architecture  
400 East Vine Street  
Suite 400  
Lexington, Kentucky 40507  
t: (859) 254-6623  
f: (859) 259-1877  
w: <http://www.cmwcaec.com>

FORM DISTRICT:  
TRADITIONAL NEIGHBORHOOD

SITE STATISTICS  
Owner: Community Ventures  
811 South Second Street  
Louisville Kentucky 40203  
Developer: Same  
Tax Block and Lot #: 11-00-01-01-01  
Zone: C-1  
Deed Book: 6293 Pg. 576  
Existing use: Restaurant (abandoned)  
New use: Food Service business incubator  
Gross Foot Print: 13,200 SF  
Gross Building Area: 13,200 SF  
Building height: 22'-0"  
Sewage Treatment: Norm's Forman  
Parking Req.: 42 Spaces  
Catering Kitchen  
1 space per 1.5 employee +2  
Members 50 + Staff 5 = 55

PARKING:  
F-1 / KITCHEN - EMPLOYEE 48  
2+ 1.5 PER EMP MIN. = 38 MIN.  
4+1 PER EMP MAX. = 52 MAX.

A-2 / RECEPTION HALL - 1424 SF  
1 SPACE: 100 SF MIN. = 15 MIN.  
1 SPACE: 50 SF MAX. = 30 MAX.

B / OFFICE - 2425 SF  
1 SPACE: 250 SF MIN. = 10 MIN.  
1 SPACE: 150 SF MAX. = 17 MAX.

TOTAL MIN REQ. = 63  
TOTAL MAX ALLOWABLE = 99

PARKING PROVIDED: 79 Spaces  
4 HC Spaces  
13 Truck Spaces

**WM# 2056**

**SITE DEMOLITION PLAN / SITE IMPROVEMENTS PLAN**

**CHEF SPACE**

**1812 WEST MUHAMMAD ALI BLVD**

**LOUISVILLE, KENTUCKY**

APR 20 2015  
PLANNING & DESIGN SERVICES  
Issue Date: FEB 2015

Drawn by: bb  
Checked by: bch  
Revisions:

Mark	Date

Project Number  
**14006.01**

© 2015 CMW

**C-101**

Plot Date: Monday, April 20, 2015 9:58:31 AM