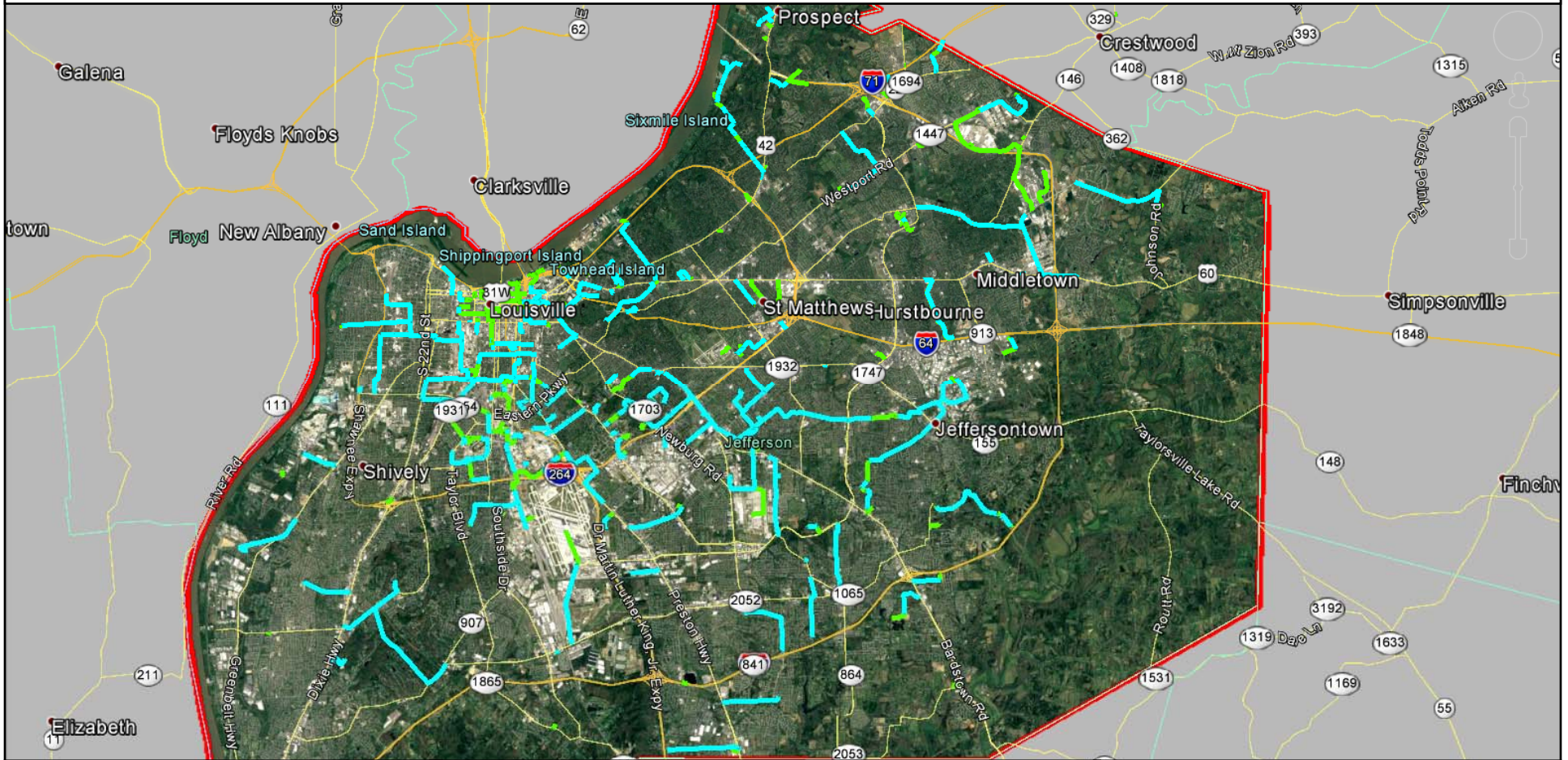


Louisville Metro Franchise License Area Planned Fiber Route

MCImetro Access Transmission Services Corp. d/b/a Verizon Access Transmission Services ("Verizon")



-  Planned Aerial
-  Planned Buried
-  City Boundary



Note: This is a PRELIMINARY VIEW only

Final design not yet completed, thus routes subject to change.

Confidentiality Statement: Verizon/MCImetro Confidential and Proprietary. May Contain Trade Secrets, or Sensitive Commercial or Financial Information. Any Unauthorized Review, Use, Disclosure, Distribution, or Copying is Prohibited
Data Source: VZB | Projection: HLD_328_LOU | Map Created: 5/16/18 | Map Created by: Brian Augustine



Louisville Metro Franchise License Area Planned Fiber Route

MCImetro Access Transmission Services Corp. d/b/a Verizon Access Transmission Services (“Verizon”)

Description of proposed system:

Verizon intends to invest in and deploy a fiber-optic network to meet the growing commercial demand of our wireline services within the Louisville Metro area. The fiber will be deployed primarily in commercially dense areas to provide wireline high speed telecommunications services to existing large business (enterprise) & wholesale customers, as well as, to new medium and small business customers. The market deployment consists of the Metro and the surrounding Jefferson, Bullitt, Oldham, Clark & Floyd counties. The build program will touch 25 of the 26 Council Districts and will mostly traverse the busy thoroughfares including state & metro through roads.

The fiber deployment seeks to utilize the benefits of the one touch make ready ordinance with more than 50% planned aerial attachment. Installation of underground conduit will be limited to the specific areas where aerial attachment is impractical due to cost, timing, or existing infrastructure layout. All construction methods will adhere to the Public Works & Assets Utility Policy. Underground construction will utilize various methods appropriate for the conditions such as micro trenching, traditional boring, open cut trenching, and hand digging where necessary. Hand holes will be buried flush to the ground within the right-of-way allowing for the safest location for installation, maintenance and network service expansion.

The project will first prioritize building the backbone infrastructure along state routes between Downtown and Jeffersontown and later expand throughout the Metro area along those commercially targeted areas shown. Verizon and its contractors will operate as good community stewards working to mitigate disruption to the citizens. This includes planning construction activities around the major events, community events on the Metro’s event calendar, Public Works planned paving efforts, & notification to surrounding communities of our intent even if only on Metro through roads. In the event of unforeseen circumstances and at the request of the Metro, Verizon will suspend construction to accommodate.



Note: This is a PRELIMINARY VIEW only

Final design not yet completed, thus routes subject to change.

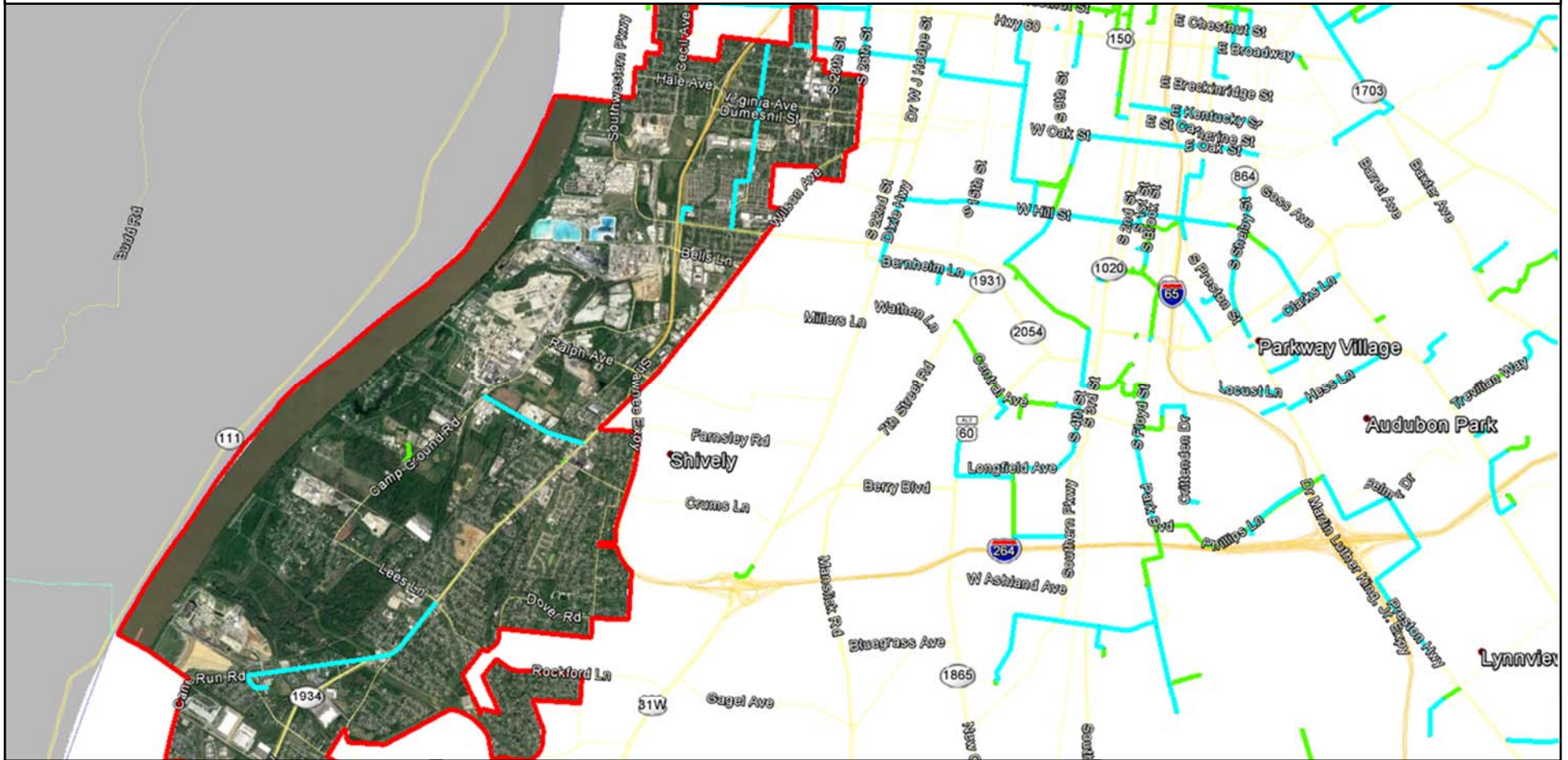
Confidentiality Statement: Verizon/MCImetro Confidential and Proprietary. May Contain Trade Secrets, or Sensitive Commercial or Financial Information. Any Unauthorized Review, Use, Disclosure, Distribution, or Copying is Prohibited

Data Source: VZB | Projection: HLD_328_LOU | Map Created: 5/16/18 | Map Created by: Brian Augustine



Louisville Metro Council District 1

MCImetro Access Transmission Services Corp. d/b/a Verizon Access Transmission Services License Area Planned Fiber Routes



- Planned Aerial
- Planned Buried
- District Outline



Note: This is a PRELIMINARY VIEW only

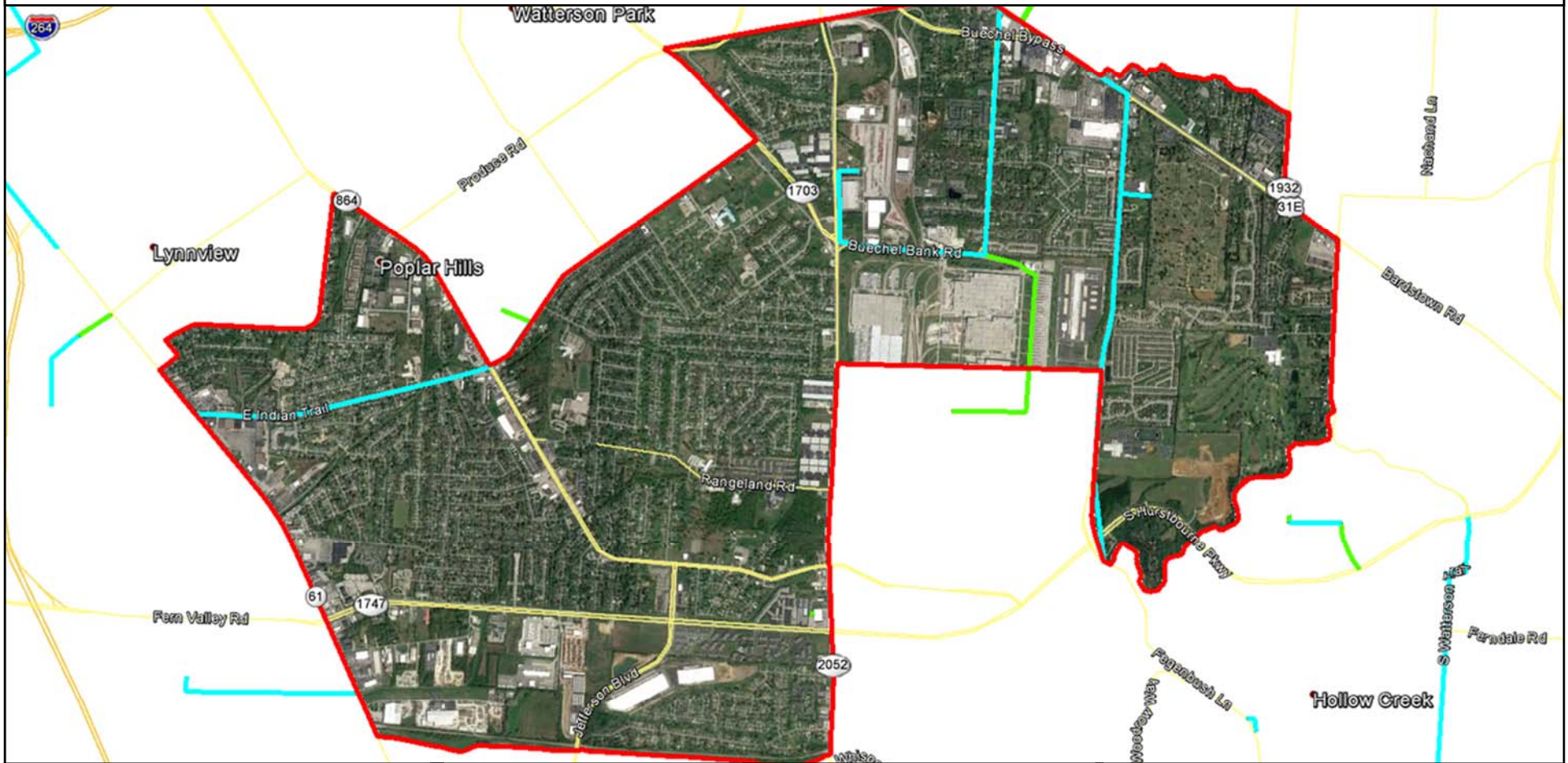
Final design not yet completed, thus routes subject to change.

Confidentiality Statement: Verizon/MCImetro Confidential and Proprietary. May Contain Trade Secrets, or Sensitive Commercial or Financial Information. Any Unauthorized Review, Use, Disclosure, Distribution, or Copying is Prohibited
Data Source: VZB | Projection: HLD_328_LOU | Map Created: 5/16/18 | Map Created by: Brian Augustine



Louisville Metro Council District 2

MCImetro Access Transmission Services Corp. d/b/a Verizon Access Transmission Services License Area Planned Fiber Routes



-  Planned Aerial
-  Planned Buried
-  District Outline



Note: This is a PRELIMINARY VIEW only

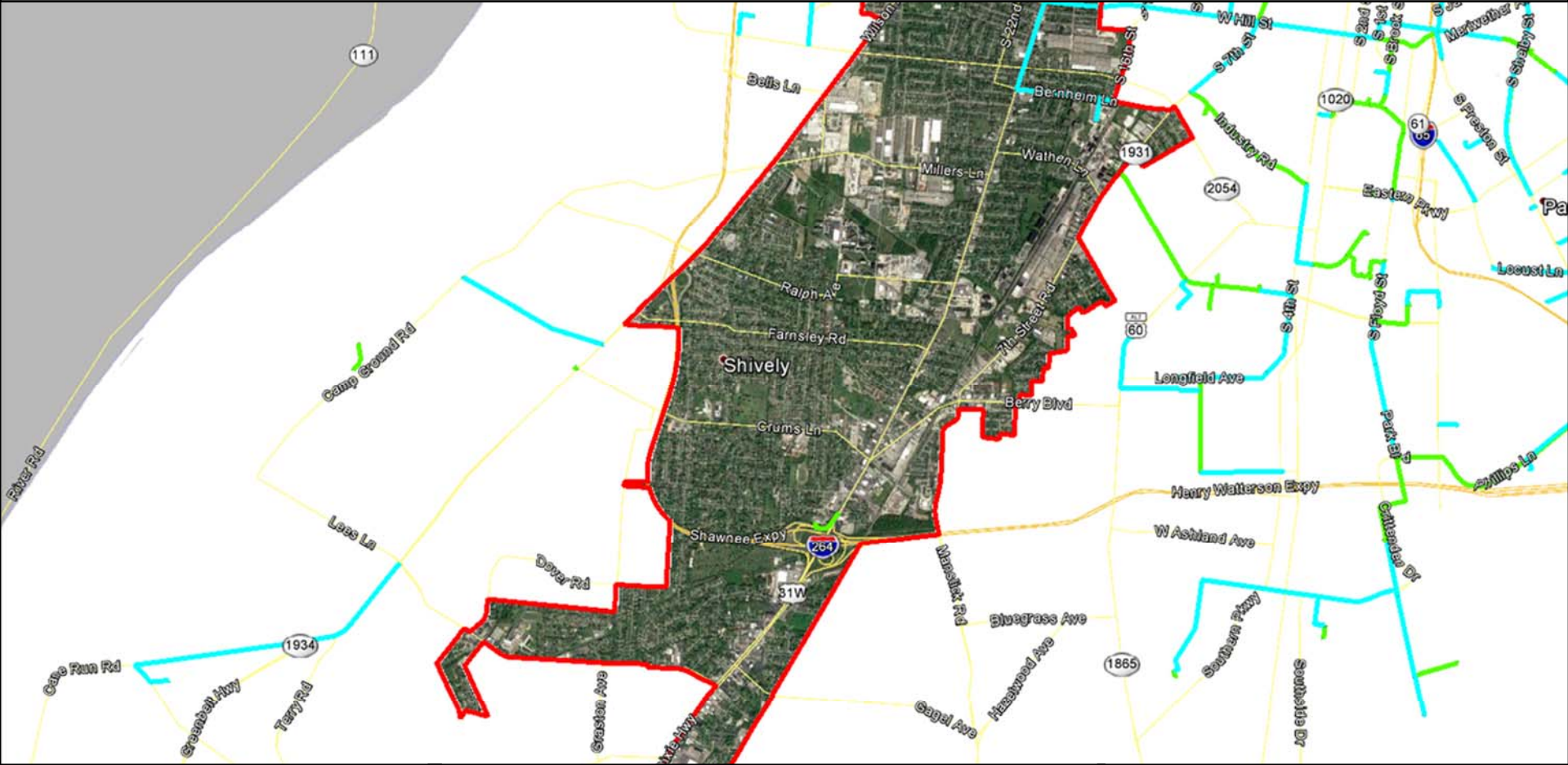
Final design not yet completed, thus routes subject to change.

Confidentiality Statement: Verizon/MCImetro Confidential and Proprietary. May Contain Trade Secrets, or Sensitive Commercial or Financial Information. Any Unauthorized Review, Use, Disclosure, Distribution, or Copying is Prohibited
Data Source: VZB | Projection: HLD_328_LOU | Map Created: 5/16/18 | Map Created by: Brian Augustine



Louisville Metro Council District 3

MCImetro Access Transmission Services Corp. d/b/a Verizon Access Transmission Services License Area Planned Fiber Routes



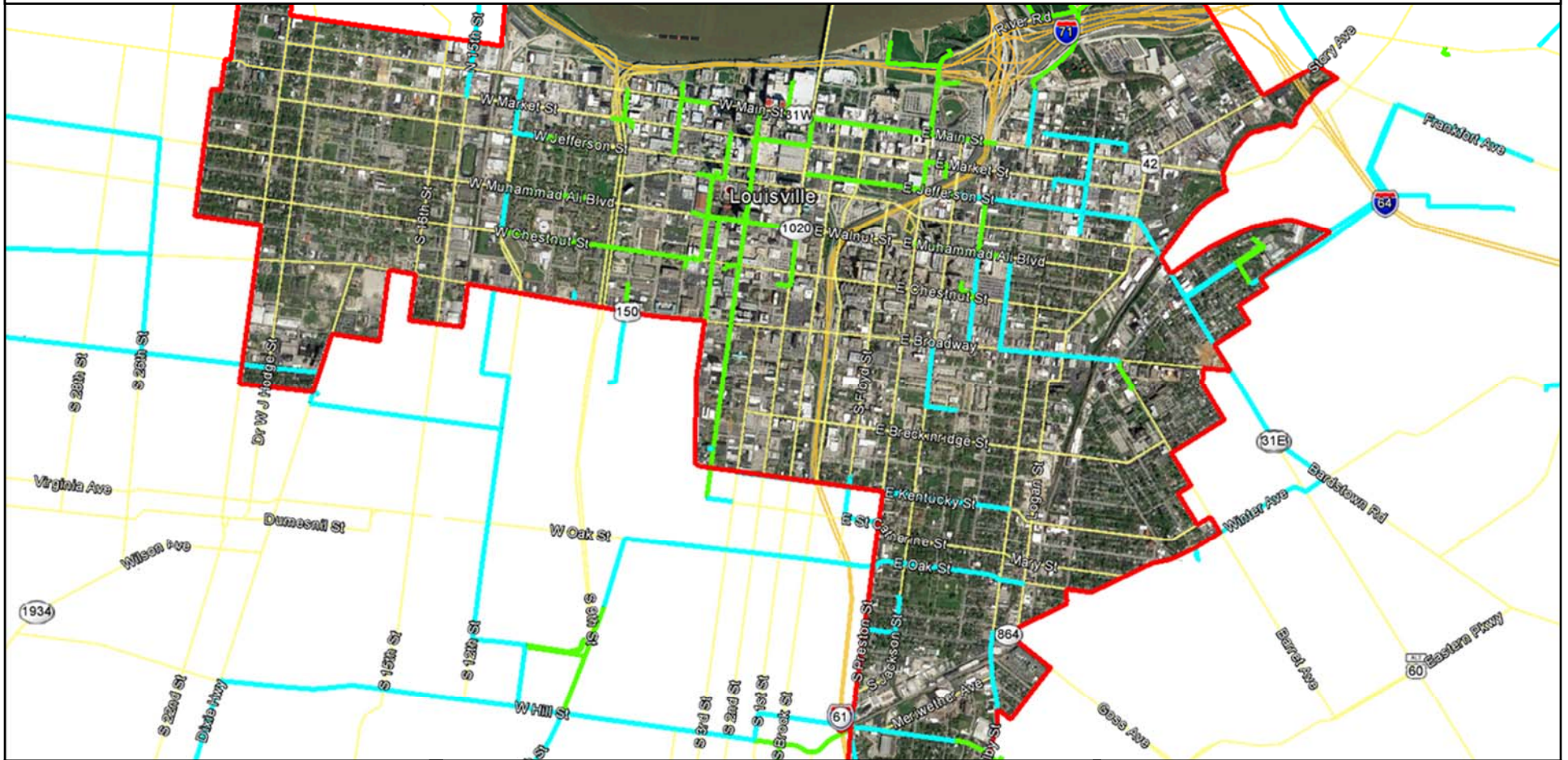
- Planned Aerial
- Planned Buried
- District Outline

Note: This is a PRELIMINARY VIEW only
Final design not yet completed, thus routes subject to change.
Confidentiality Statement: Verizon/MCImetro Confidential and Proprietary. May Contain Trade Secrets, or Sensitive Commercial or Financial Information. Any Unauthorized Review, Use, Disclosure, Distribution, or Copying is Prohibited
Data Source: VZB | Projection: HLD_328_LOU | Map Created: 5/16/18 | Map Created by: Brian Augustine



Louisville Metro Council District 4

MCImetro Access Transmission Services Corp. d/b/a Verizon Access Transmission Services License Area Planned Fiber Routes



-  Planned Aerial
-  Planned Buried
-  District Outline



Note: This is a PRELIMINARY VIEW only

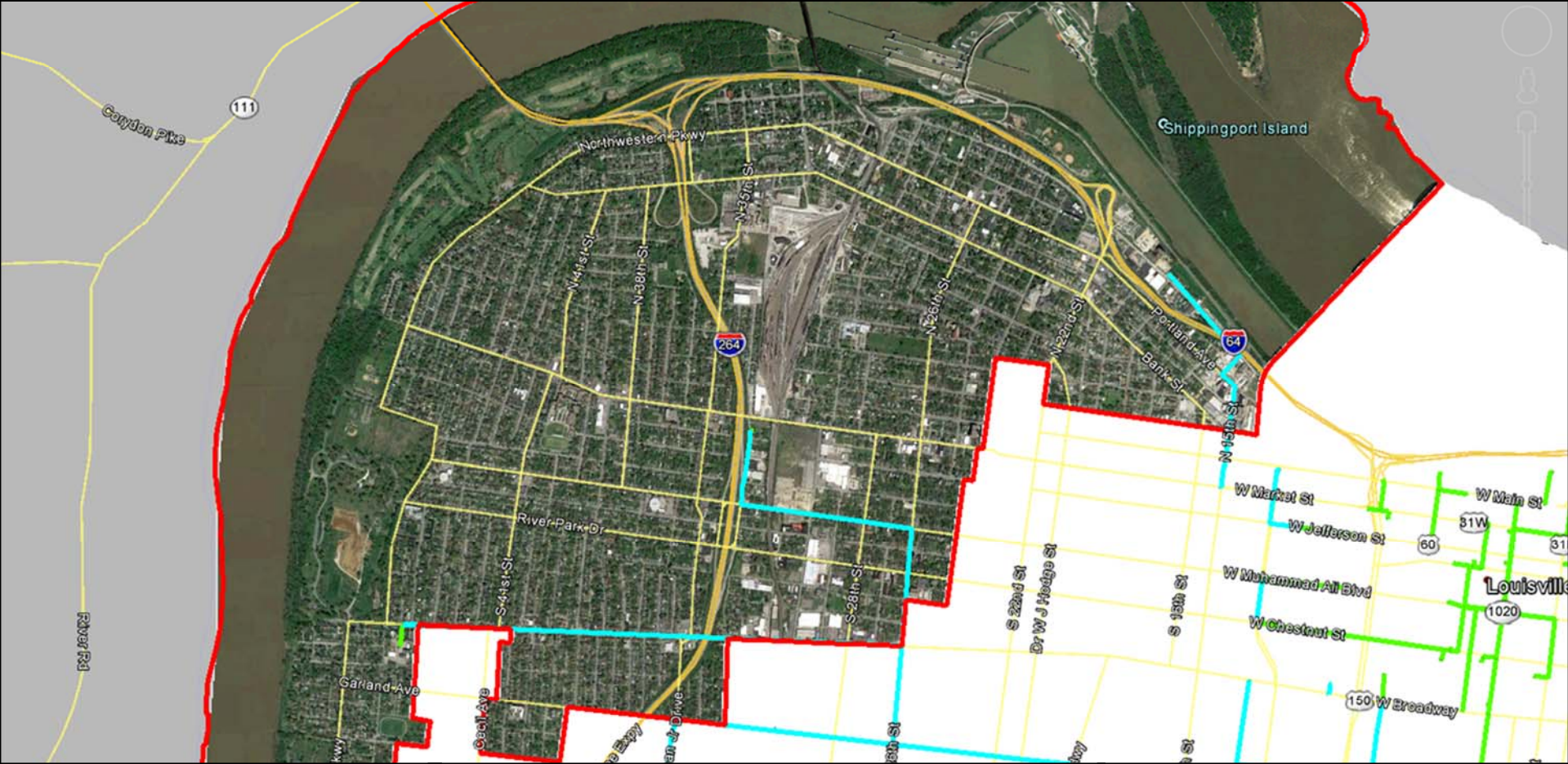
Final design not yet completed, thus routes subject to change.

Confidentiality Statement: Verizon/MCImetro Confidential and Proprietary. May Contain Trade Secrets, or Sensitive Commercial or Financial Information. Any Unauthorized Review, Use, Disclosure, Distribution, or Copying is Prohibited
Data Source: VZB | Projection: HLD_328_LOU | Map Created: 5/16/18 | Map Created by: Brian Augustine



Louisville Metro Council District 5

MCImetro Access Transmission Services Corp. d/b/a Verizon Access Transmission Services License Area Planned Fiber Routes



-  Planned Aerial
-  Planned Buried
-  District Outline

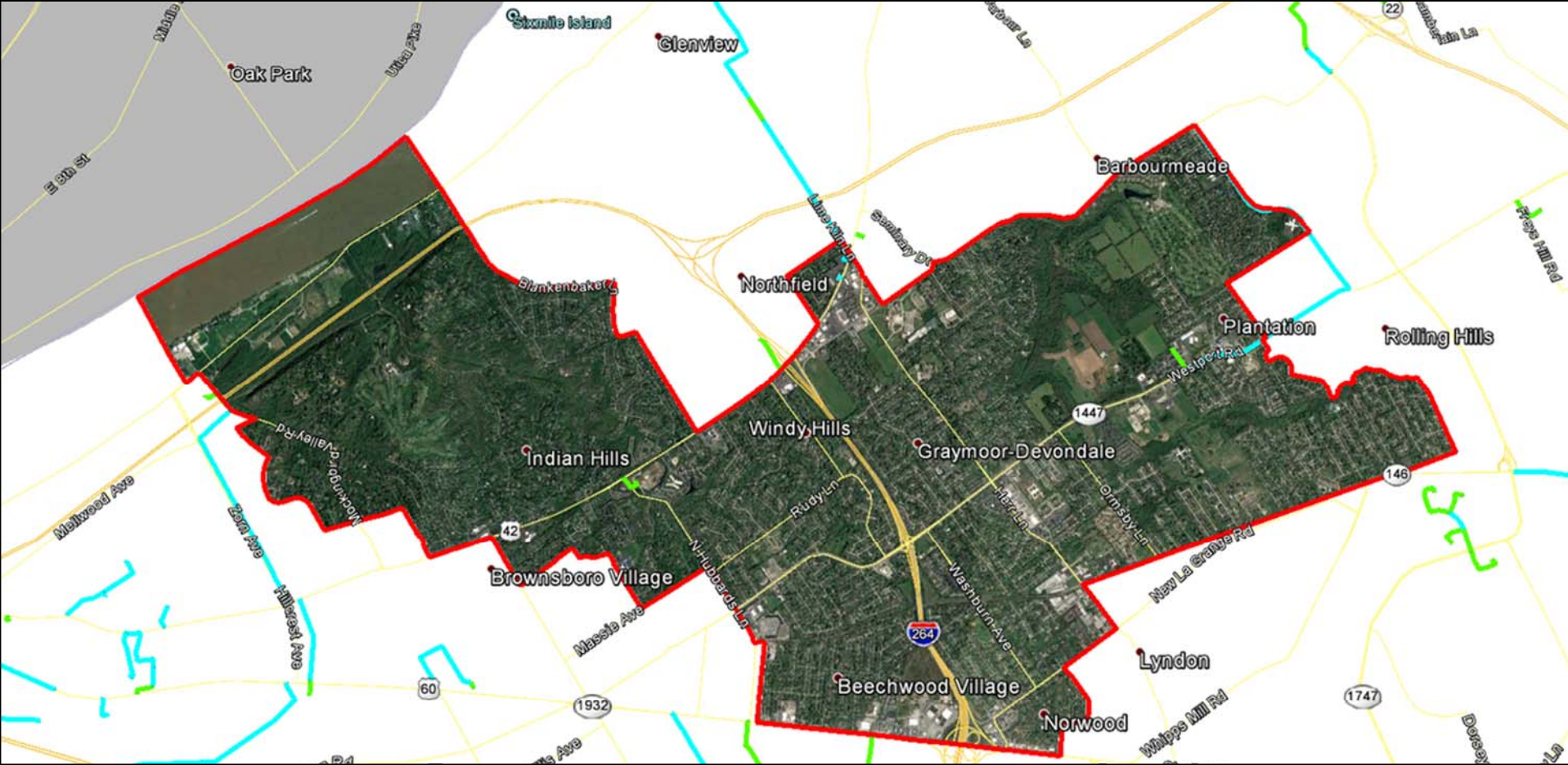


Note: This is a PRELIMINARY VIEW only
Final design not yet completed, thus routes subject to change.
Confidentiality Statement: Verizon/MCImetro Confidential and Proprietary. May Contain Trade Secrets, or Sensitive Commercial or Financial Information. Any Unauthorized Review, Use, Disclosure, Distribution, or Copying is Prohibited
Data Source: VZB | Projection: HLD_328_LOU | Map Created: 5/16/18 | Map Created by: Brian Augustine



Louisville Metro Council District 7

MCImetro Access Transmission Services Corp. d/b/a Verizon Access Transmission Services License Area Planned Fiber Routes



-  Planned Aerial
-  Planned Buried
-  District Outline

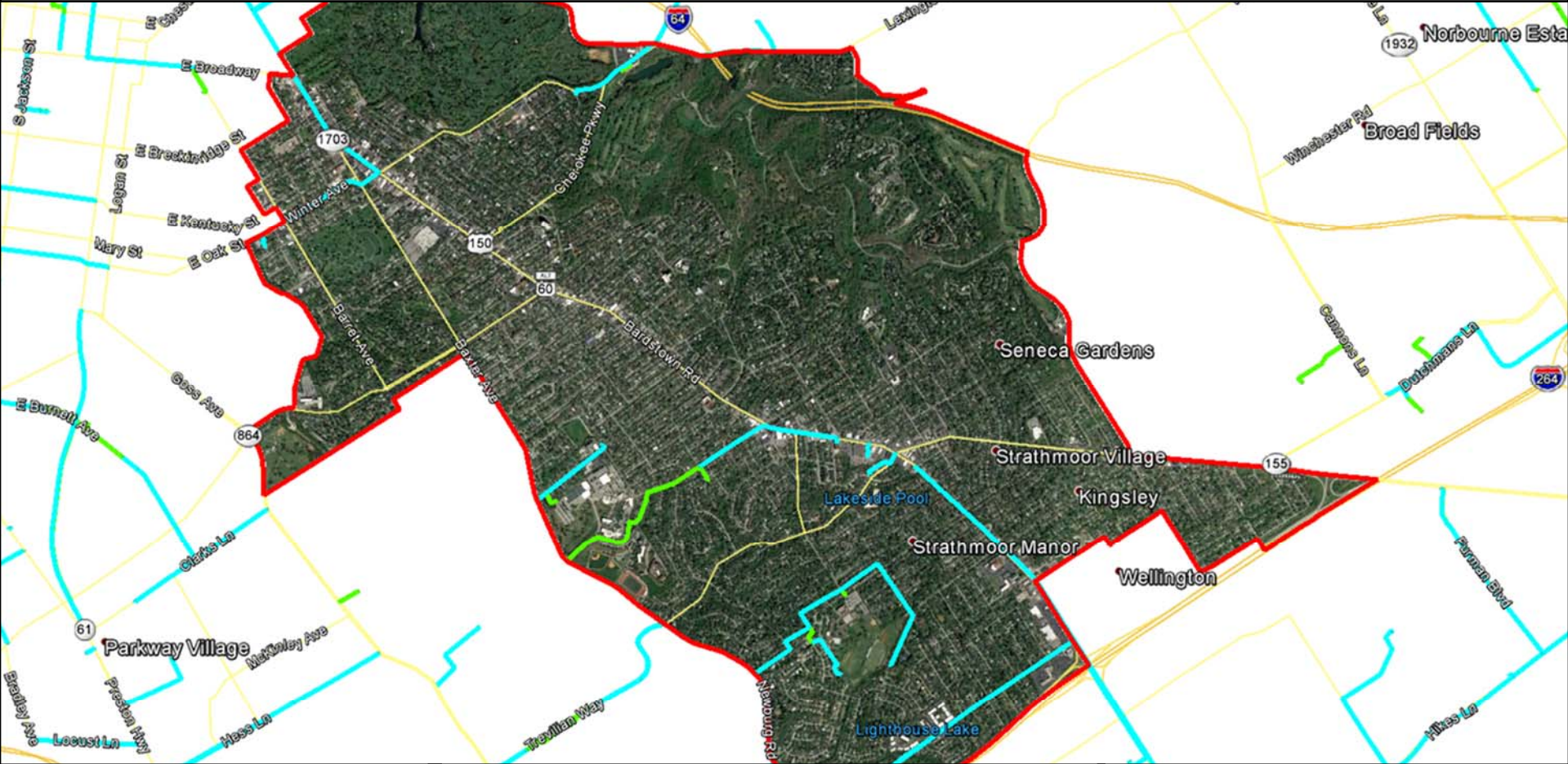


Note: This is a PRELIMINARY VIEW only
Final design not yet completed, thus routes subject to change.
Confidentiality Statement: Verizon/MCImetro Confidential and Proprietary. May Contain Trade Secrets, or Sensitive Commercial or Financial Information. Any Unauthorized Review, Use, Disclosure, Distribution, or Copying is Prohibited
Data Source: VZB | Projection: HLD_328_LOU | Map Created: 5/16/18 | Map Created by: Brian Augustine



Louisville Metro Council District 8

MCImetro Access Transmission Services Corp. d/b/a Verizon Access Transmission Services License Area Planned Fiber Routes



-  Planned Aerial
-  Planned Buried
-  District Outline



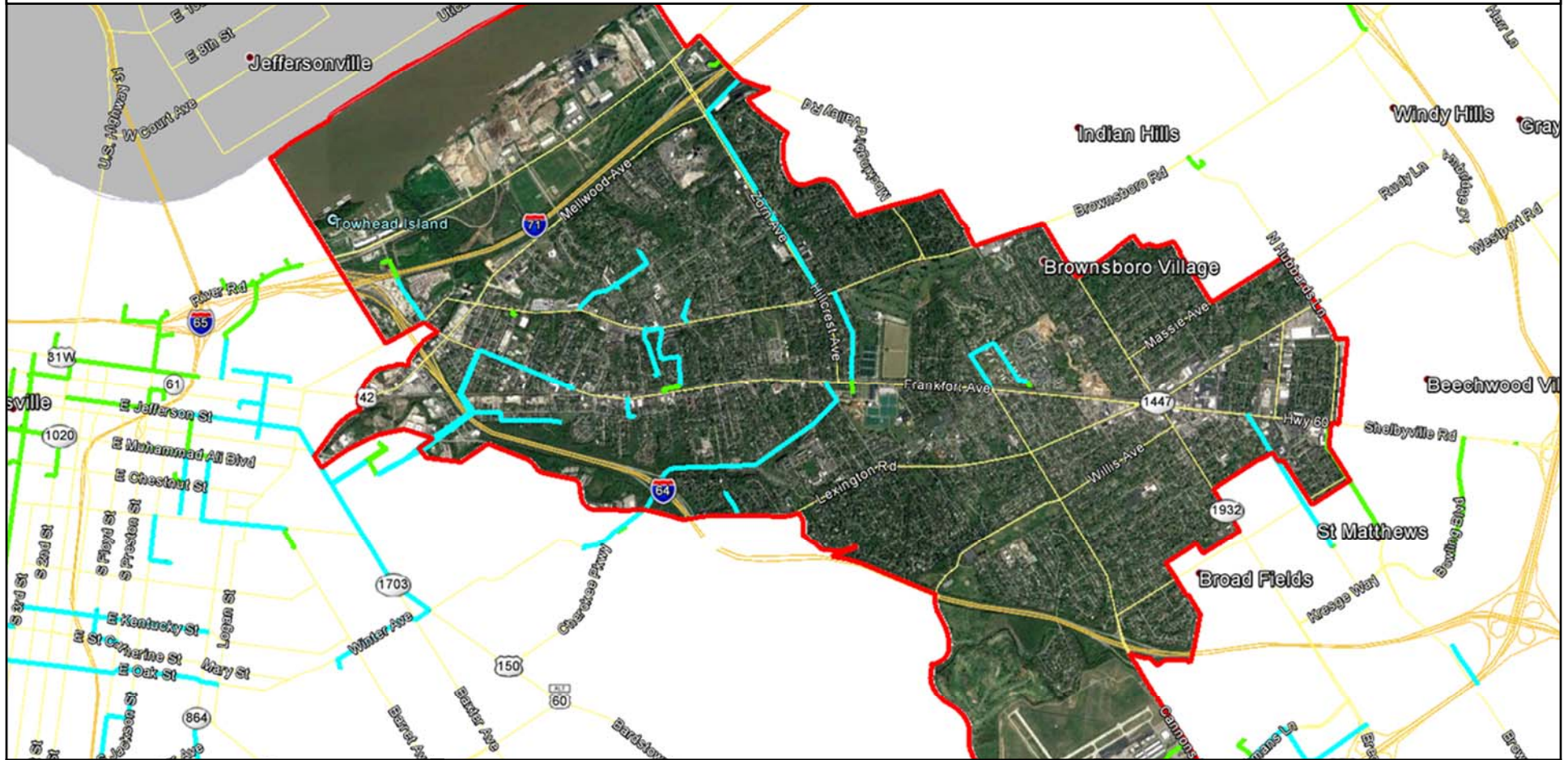
Note: This is a PRELIMINARY VIEW only

Final design not yet completed, thus routes subject to change.
Confidentiality Statement: Verizon/MCImetro Confidential and Proprietary. May Contain Trade Secrets, or Sensitive Commercial or Financial Information. Any Unauthorized Review, Use, Disclosure, Distribution, or Copying is Prohibited
Data Source: VZB | Projection: HLD_328_LOU | Map Created: 5/16/18 | Map Created by: Brian Augustine



Louisville Metro Council District 9

MCImetro Access Transmission Services Corp. d/b/a Verizon Access Transmission Services License Area Planned Fiber Routes



-  Planned Aerial
-  Planned Buried
-  District Outline



Note: This is a PRELIMINARY VIEW only

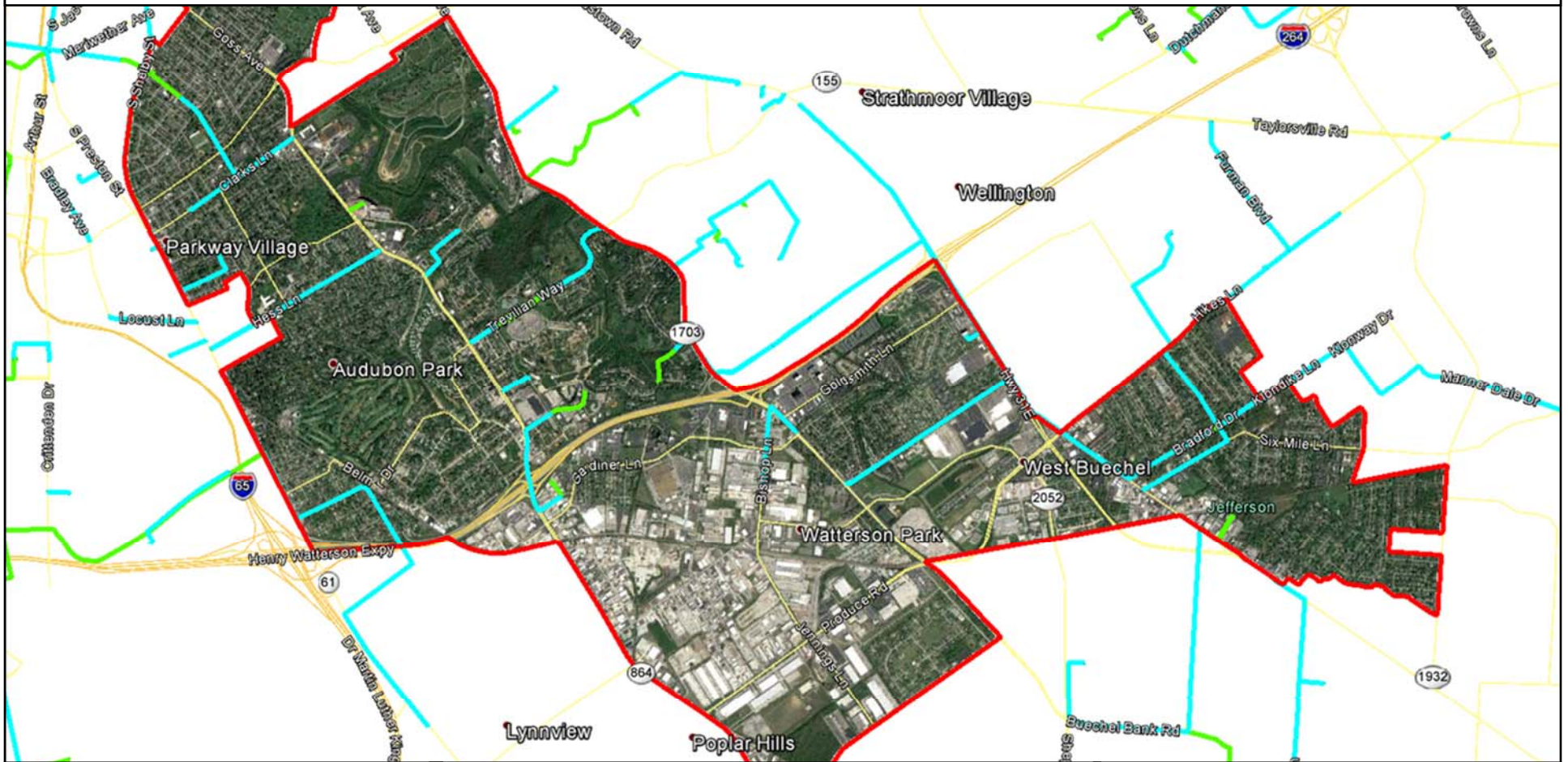
Final design not yet completed, thus routes subject to change.

Confidentiality Statement: Verizon/MCImetro Confidential and Proprietary. May Contain Trade Secrets, or Sensitive Commercial or Financial Information. Any Unauthorized Review, Use, Disclosure, Distribution, or Copying is Prohibited
Data Source: VZB | Projection: HLD_328_LOU | Map Created: 5/16/18 | Map Created by: Brian Augustine



Louisville Metro Council District 10

MCImetro Access Transmission Services Corp. d/b/a Verizon Access Transmission Services License Area Planned Fiber Routes



- Planned Aerial
- Planned Buried
- District Outline



Note: This is a PRELIMINARY VIEW only

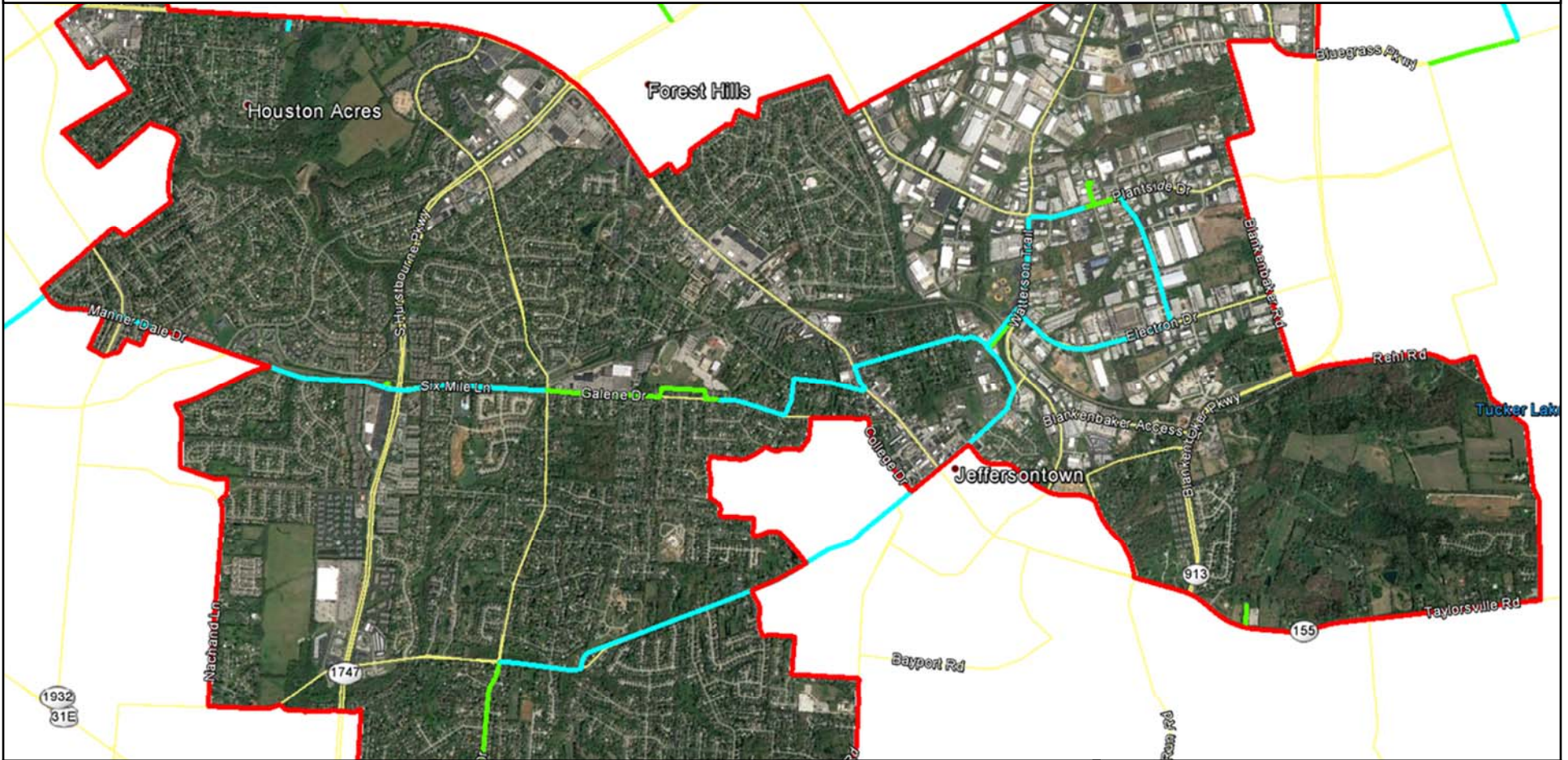
Final design not yet completed, thus routes subject to change.

Confidentiality Statement: Verizon/MCImetro Confidential and Proprietary. May Contain Trade Secrets, or Sensitive Commercial or Financial Information. Any Unauthorized Review, Use, Disclosure, Distribution, or Copying is Prohibited
Data Source: VZB | Projection: HLD_328_LOU | Map Created: 5/16/18 | Map Created by: Brian Augustine



Louisville Metro Council District 11

MCImetro Access Transmission Services Corp. d/b/a Verizon Access Transmission Services License Area Planned Fiber Routes



-  Planned Aerial
-  Planned Buried
-  District Outline



Note: This is a PRELIMINARY VIEW only

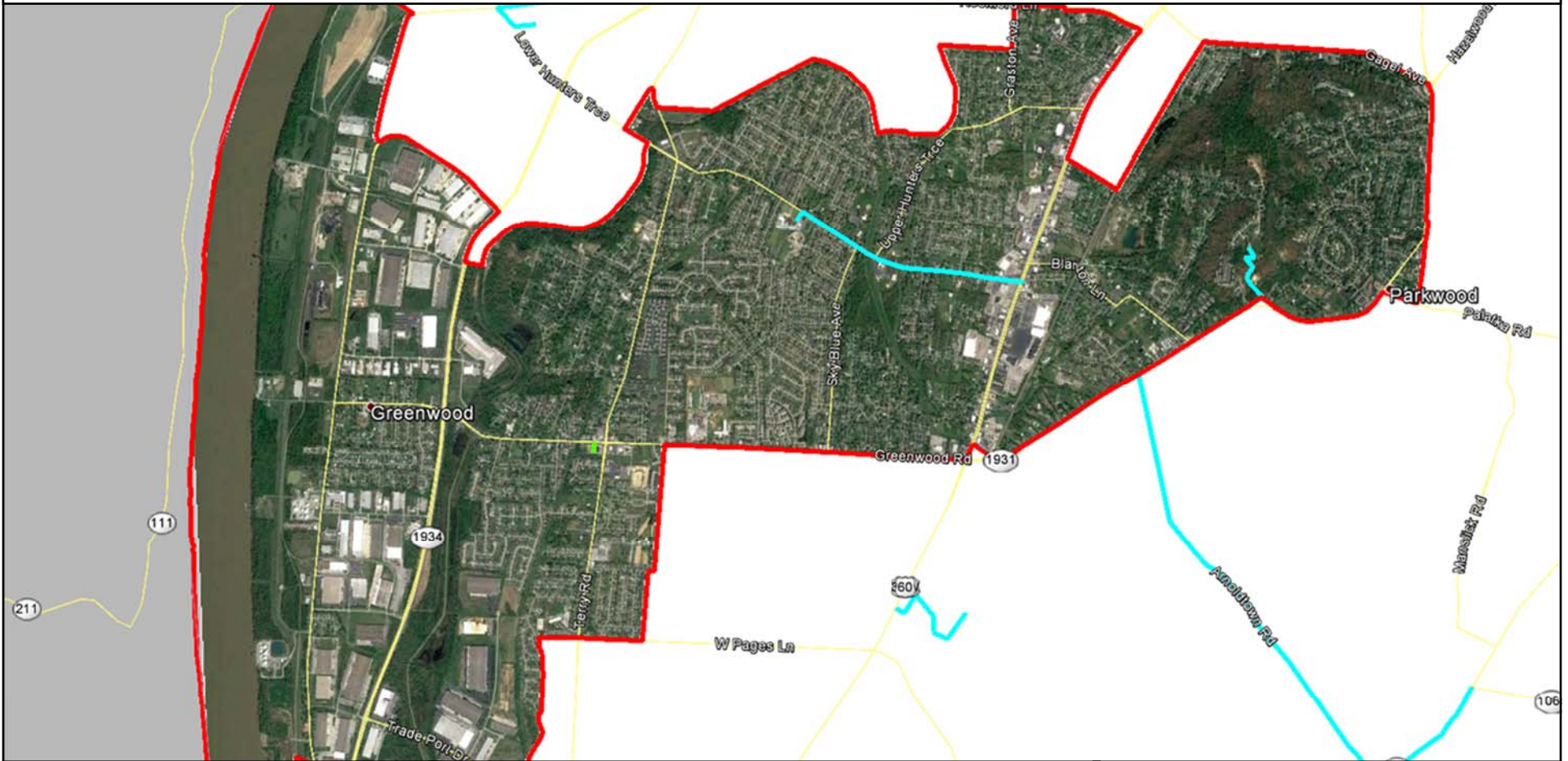
Final design not yet completed, thus routes subject to change.

Confidentiality Statement: Verizon/MCImetro Confidential and Proprietary. May Contain Trade Secrets, or Sensitive Commercial or Financial Information. Any Unauthorized Review, Use, Disclosure, Distribution, or Copying is Prohibited
Data Source: VZB | Projection: HLD_328_LOU | Map Created: 5/16/18 | Map Created by: Brian Augustine



Louisville Metro Council District 12

MCImetro Access Transmission Services Corp. d/b/a Verizon Access Transmission Services License Area Planned Fiber Routes



-  Planned Aerial
-  Planned Buried
-  District Outline



Note: This is a PRELIMINARY VIEW only

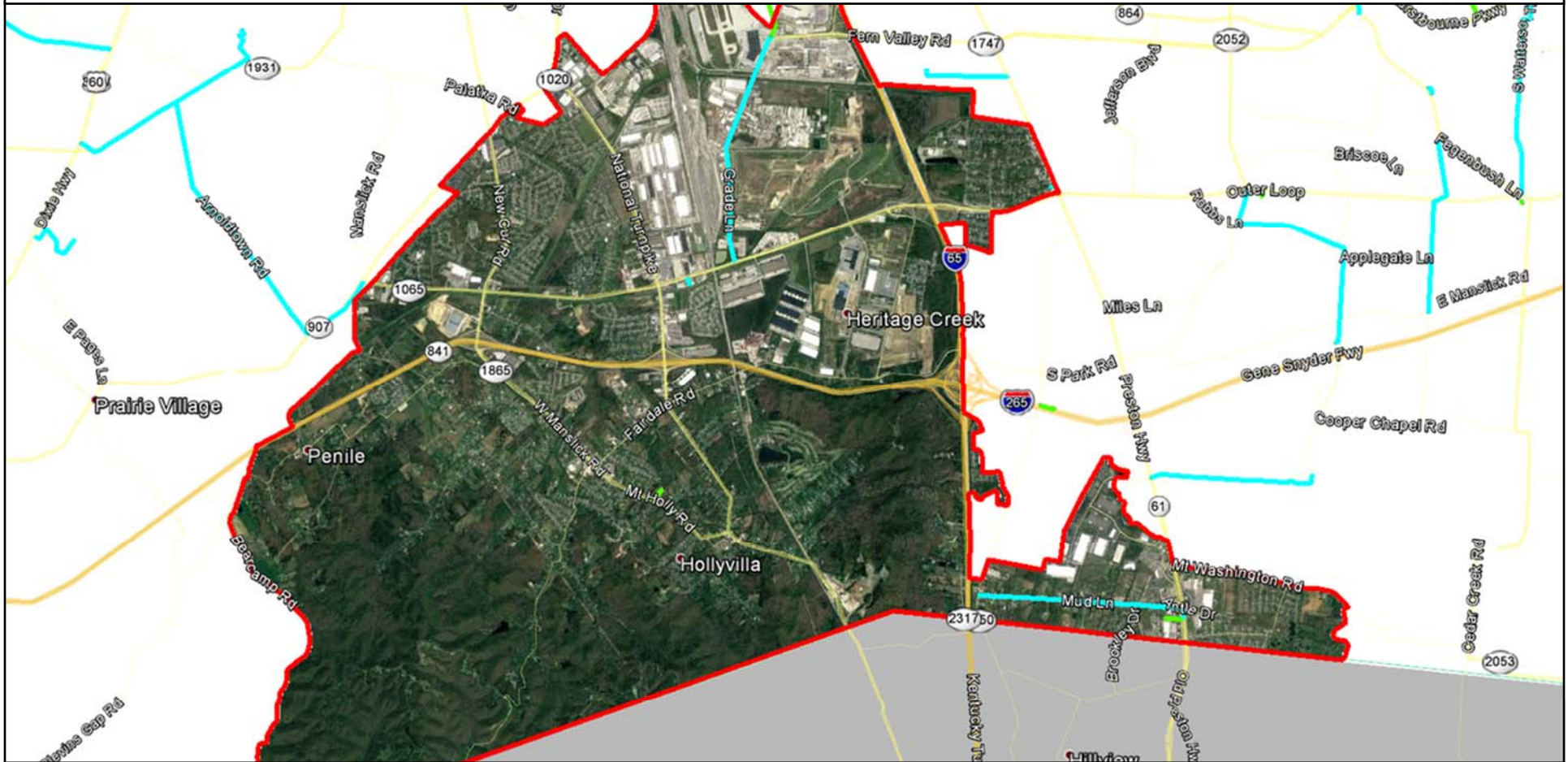
Final design not yet completed, thus routes subject to change.

Confidentiality Statement: Verizon/MCImetro Confidential and Proprietary. May Contain Trade Secrets, or Sensitive Commercial or Financial Information. Any Unauthorized Review, Use, Disclosure, Distribution, or Copying is Prohibited
Data Source: VZB | Projection: HLD_328_LOU | Map Created: 5/16/18 | Map Created by: Brian Augustine



Louisville Metro Council District 13

MCImetro Access Transmission Services Corp. d/b/a Verizon Access Transmission Services License Area Planned Fiber Routes



-  Planned Aerial
-  Planned Buried
-  District Outline



Note: This is a PRELIMINARY VIEW only

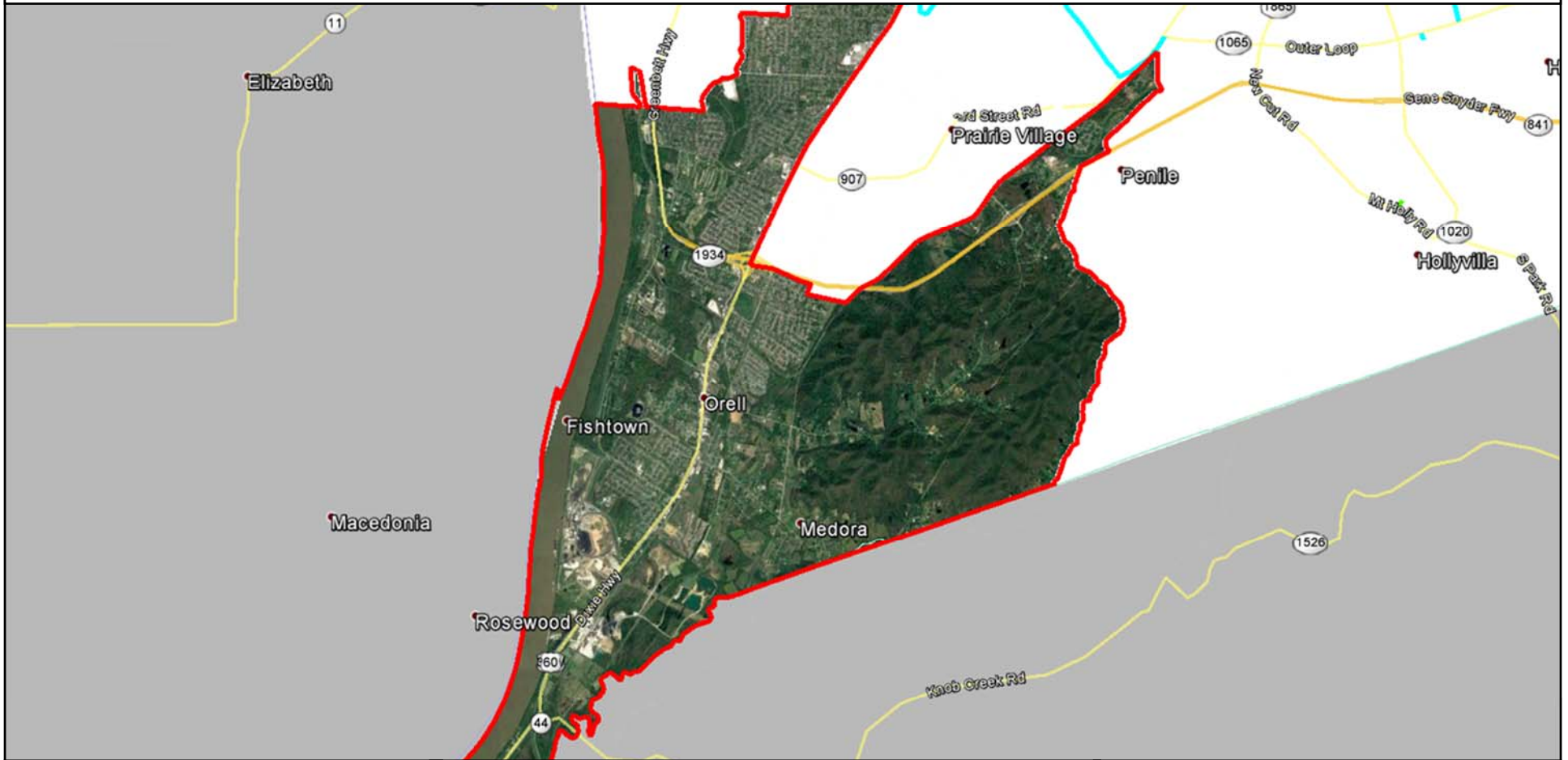
Final design not yet completed, thus routes subject to change.

Confidentiality Statement: Verizon/MCImetro Confidential and Proprietary. May Contain Trade Secrets, or Sensitive Commercial or Financial Information. Any Unauthorized Review, Use, Disclosure, Distribution, or Copying is Prohibited
Data Source: VZB | Projection: HLD_328_LOU | Map Created: 5/16/18 | Map Created by: Brian Augustine



Louisville Metro Council District 14

MCImetro Access Transmission Services Corp. d/b/a Verizon Access Transmission Services License Area Planned Fiber Routes



-  Planned Aerial
-  Planned Buried
-  District Outline



Note: This is a PRELIMINARY VIEW only

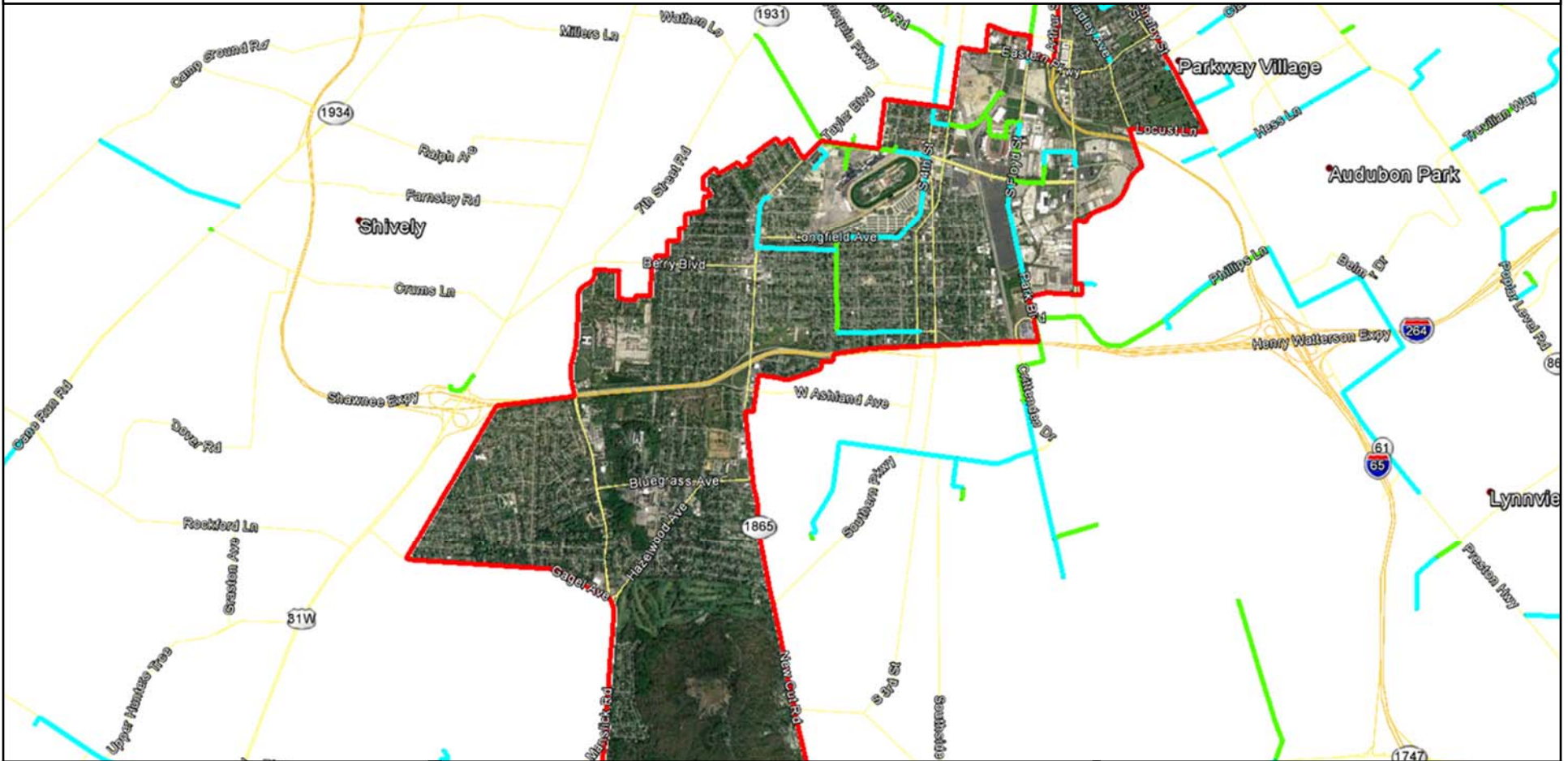
Final design not yet completed, thus routes subject to change.

Confidentiality Statement: Verizon/MCImetro Confidential and Proprietary. May Contain Trade Secrets, or Sensitive Commercial or Financial Information. Any Unauthorized Review, Use, Disclosure, Distribution, or Copying is Prohibited
Data Source: VZB | Projection: HLD_328_LOU | Map Created: 5/16/18 | Map Created by: Brian Augustine



Louisville Metro Council District 15

MCImetro Access Transmission Services Corp. d/b/a Verizon Access Transmission Services License Area Planned Fiber Routes



-  Planned Aerial
-  Planned Buried
-  District Outline



Note: This is a PRELIMINARY VIEW only

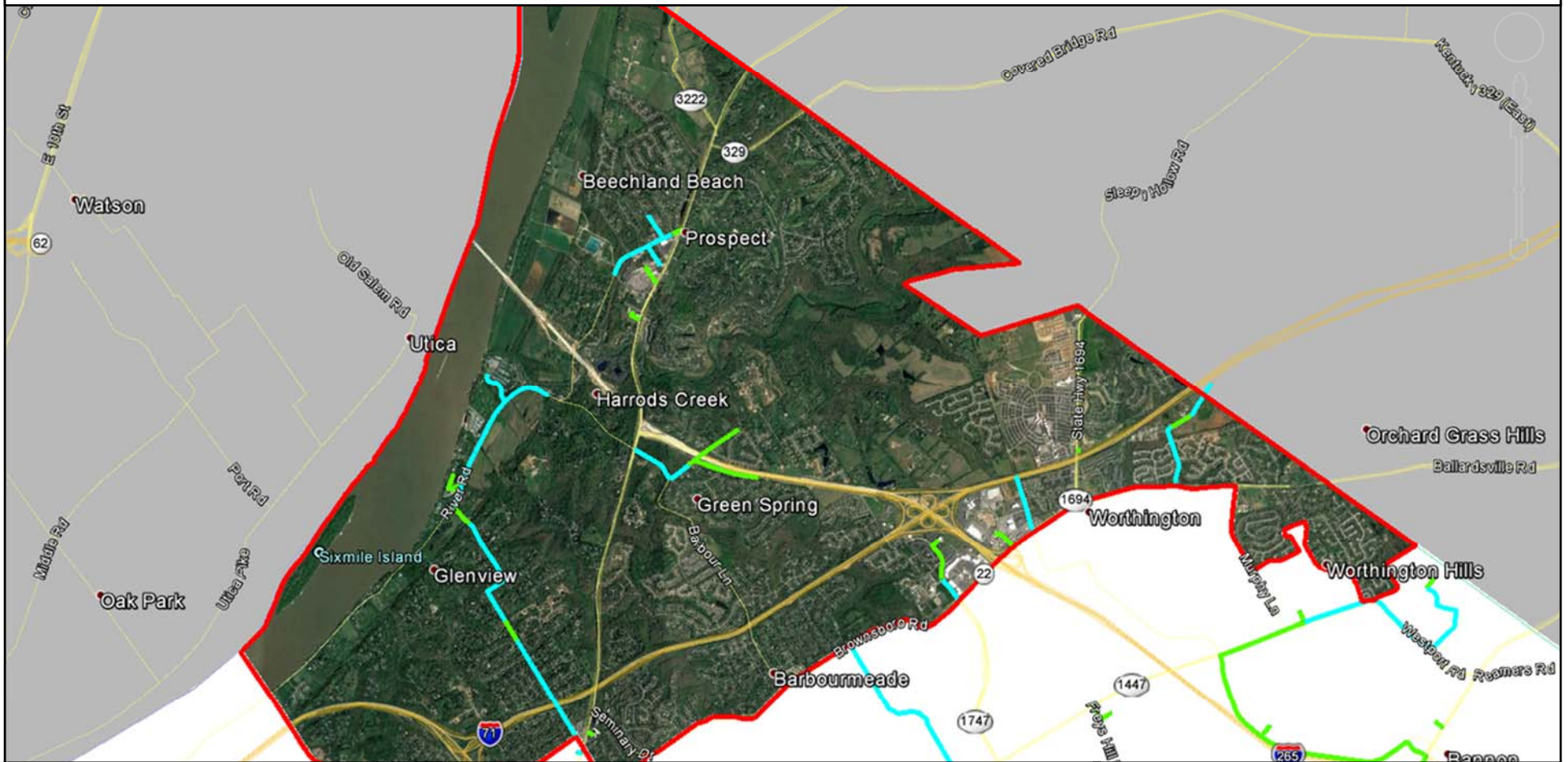
Final design not yet completed, thus routes subject to change.

Confidentiality Statement: Verizon/MCImetro Confidential and Proprietary. May Contain Trade Secrets, or Sensitive Commercial or Financial Information. Any Unauthorized Review, Use, Disclosure, Distribution, or Copying is Prohibited
Data Source: VZB | Projection: HLD_328_LOU | Map Created: 5/16/18 | Map Created by: Brian Augustine



Louisville Metro Council District 16

MCImetro Access Transmission Services Corp. d/b/a Verizon Access Transmission Services License Area Planned Fiber Routes



-  Planned Aerial
-  Planned Buried
-  District Outline



Note: This is a PRELIMINARY VIEW only

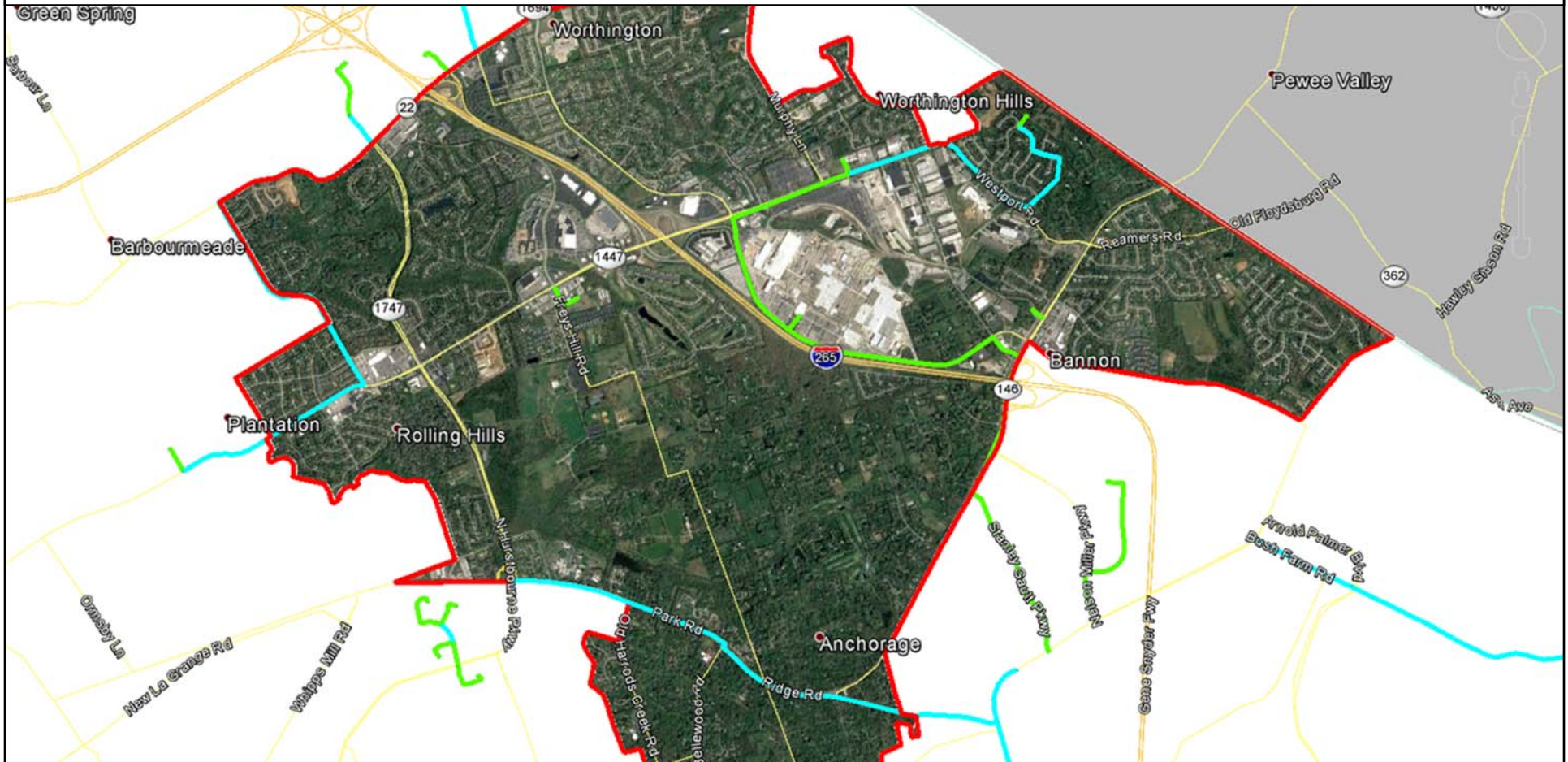
Final design not yet completed, thus routes subject to change.

Confidentiality Statement: Verizon/MCImetro Confidential and Proprietary. May Contain Trade Secrets, or Sensitive Commercial or Financial Information. Any Unauthorized Review, Use, Disclosure, Distribution, or Copying is Prohibited
Data Source: VZB | Projection: HLD_328_LOU | Map Created: 5/16/18 | Map Created by: Brian Augustine



Louisville Metro Council District 17

MCImetro Access Transmission Services Corp. d/b/a Verizon Access Transmission Services License Area Planned Fiber Routes



-  Planned Aerial
-  Planned Buried
-  District Outline



Note: This is a PRELIMINARY VIEW only

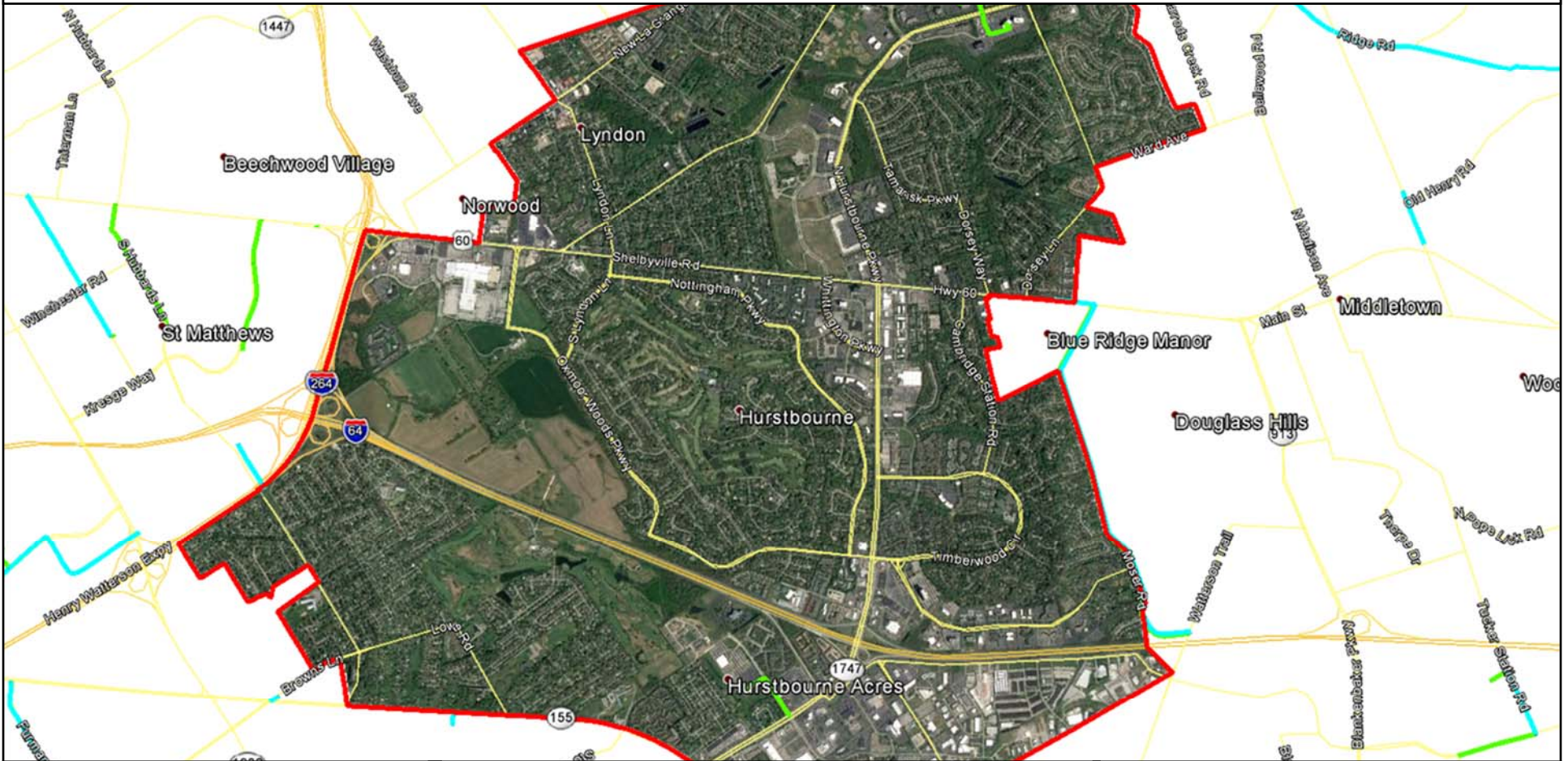
Final design not yet completed, thus routes subject to change.

Confidentiality Statement: Verizon/MCImetro Confidential and Proprietary. May Contain Trade Secrets, or Sensitive Commercial or Financial Information. Any Unauthorized Review, Use, Disclosure, Distribution, or Copying is Prohibited
Data Source: VZB | Projection: HLD_328_LOU | Map Created: 5/16/18 | Map Created by: Brian Augustine



Louisville Metro Council District 18

MCImetro Access Transmission Services Corp. d/b/a Verizon Access Transmission Services License Area Planned Fiber Routes



-  Planned Aerial
-  Planned Buried
-  District Outline



Note: This is a PRELIMINARY VIEW only

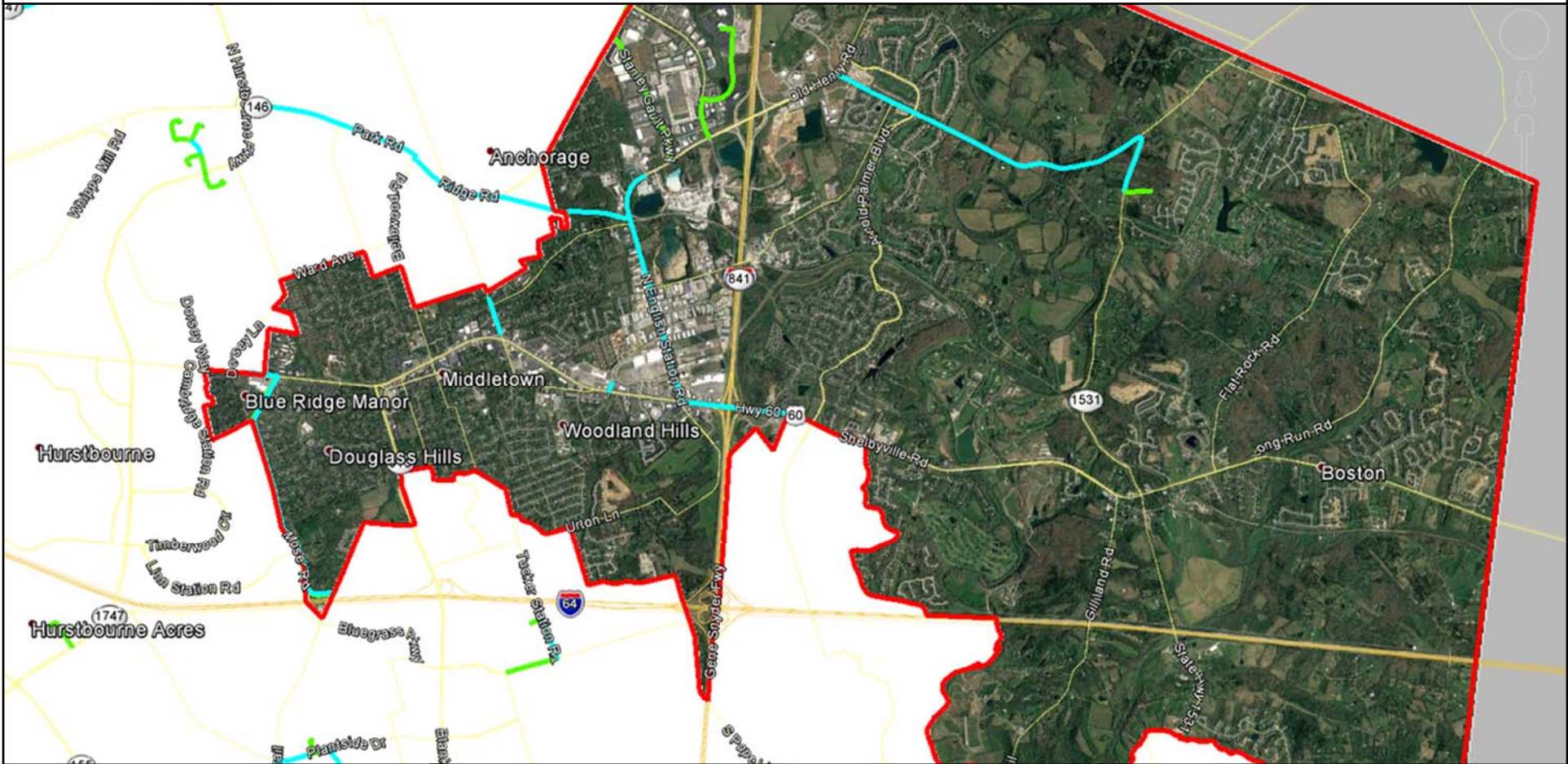
Final design not yet completed, thus routes subject to change.

Confidentiality Statement: Verizon/MCImetro Confidential and Proprietary. May Contain Trade Secrets, or Sensitive Commercial or Financial Information. Any Unauthorized Review, Use, Disclosure, Distribution, or Copying is Prohibited
Data Source: VZB | Projection: HLD_328_LOU | Map Created: 5/16/18 | Map Created by: Brian Augustine



Louisville Metro Council District 19

MCImetro Access Transmission Services Corp. d/b/a Verizon Access Transmission Services License Area Planned Fiber Routes



-  Planned Aerial
-  Planned Buried
-  District Outline



Note: This is a PRELIMINARY VIEW only

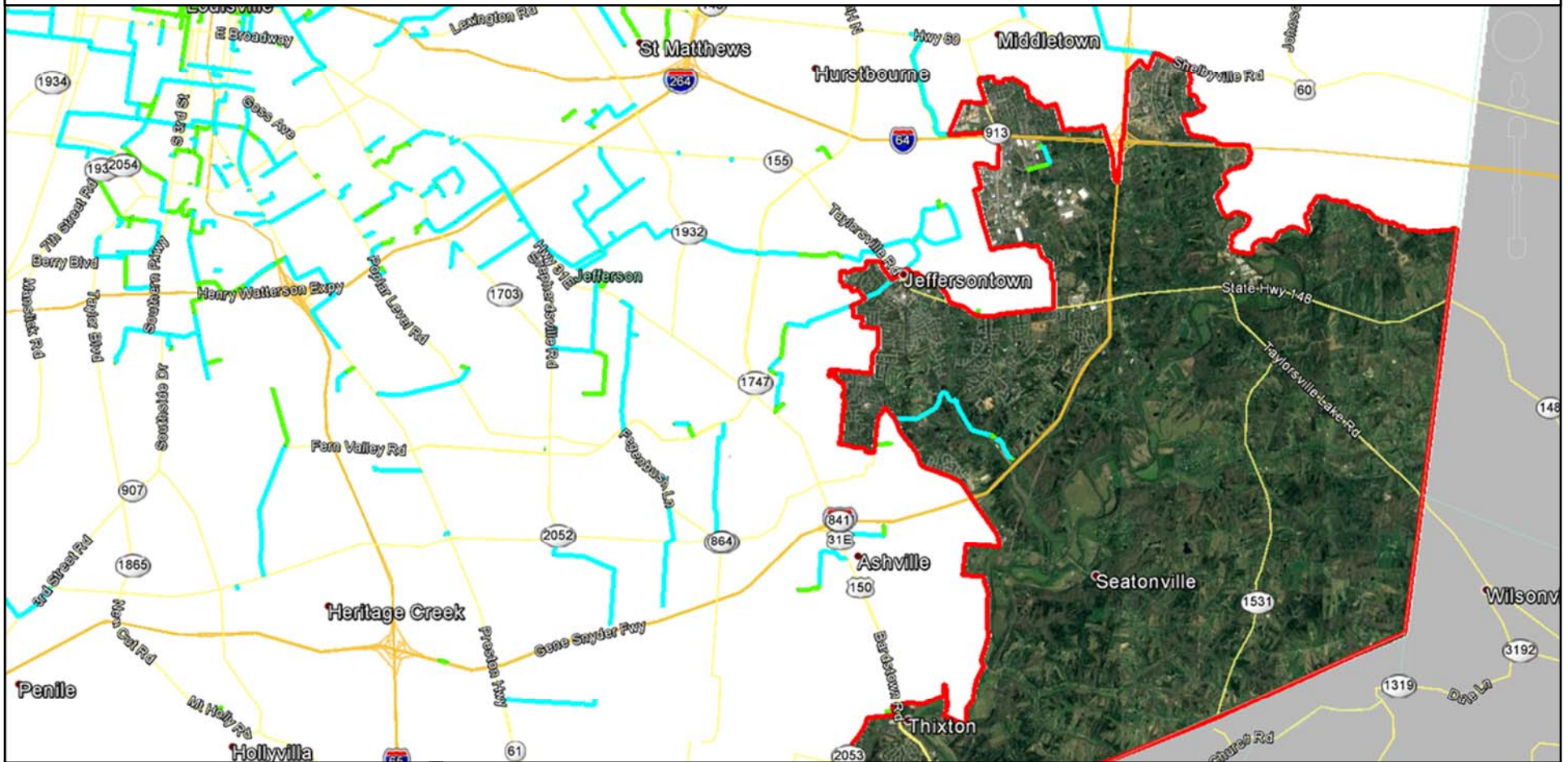
Final design not yet completed, thus routes subject to change.

Confidentiality Statement: Verizon/MCImetro Confidential and Proprietary. May Contain Trade Secrets, or Sensitive Commercial or Financial Information. Any Unauthorized Review, Use, Disclosure, Distribution, or Copying is Prohibited
Data Source: VZB | Projection: HLD_328_LOU | Map Created: 5/16/18 | Map Created by: Brian Augustine



Louisville Metro Council District 20

MCImetro Access Transmission Services Corp. d/b/a Verizon Access Transmission Services License Area Planned Fiber Routes



-  Planned Aerial
-  Planned Buried
-  District Outline



Note: This is a PRELIMINARY VIEW only

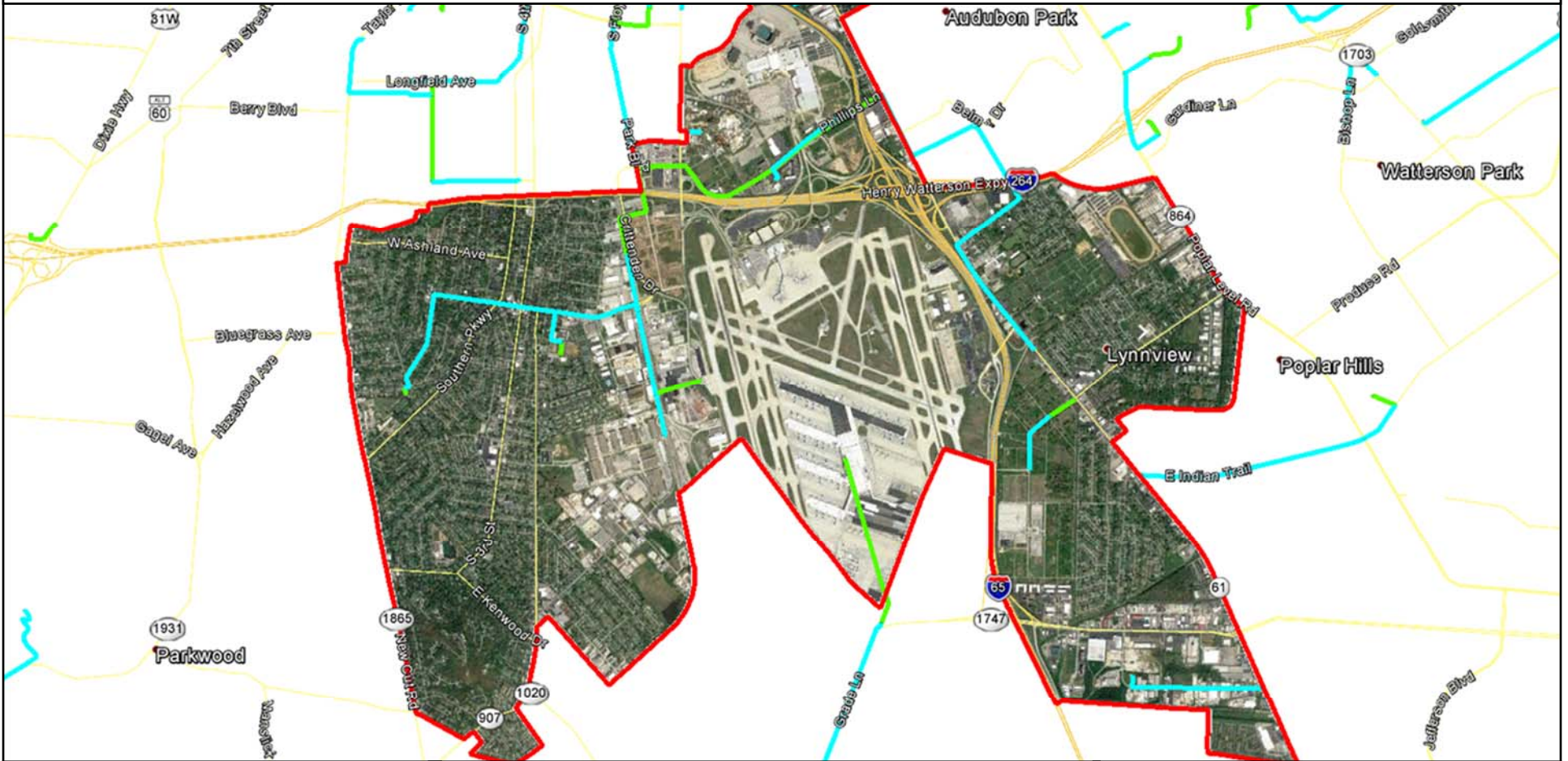
Final design not yet completed, thus routes subject to change.

Confidentiality Statement: Verizon/MCImetro Confidential and Proprietary. May Contain Trade Secrets, or Sensitive Commercial or Financial Information. Any Unauthorized Review, Use, Disclosure, Distribution, or Copying is Prohibited
Data Source: VZB | Projection: HLD_328_LOU | Map Created: 5/16/18 | Map Created by: Brian Augustine



Louisville Metro Council District 21

MCImetro Access Transmission Services Corp. d/b/a Verizon Access Transmission Services License Area Planned Fiber Routes



-  Planned Aerial
-  Planned Buried
-  District Outline



Note: This is a PRELIMINARY VIEW only

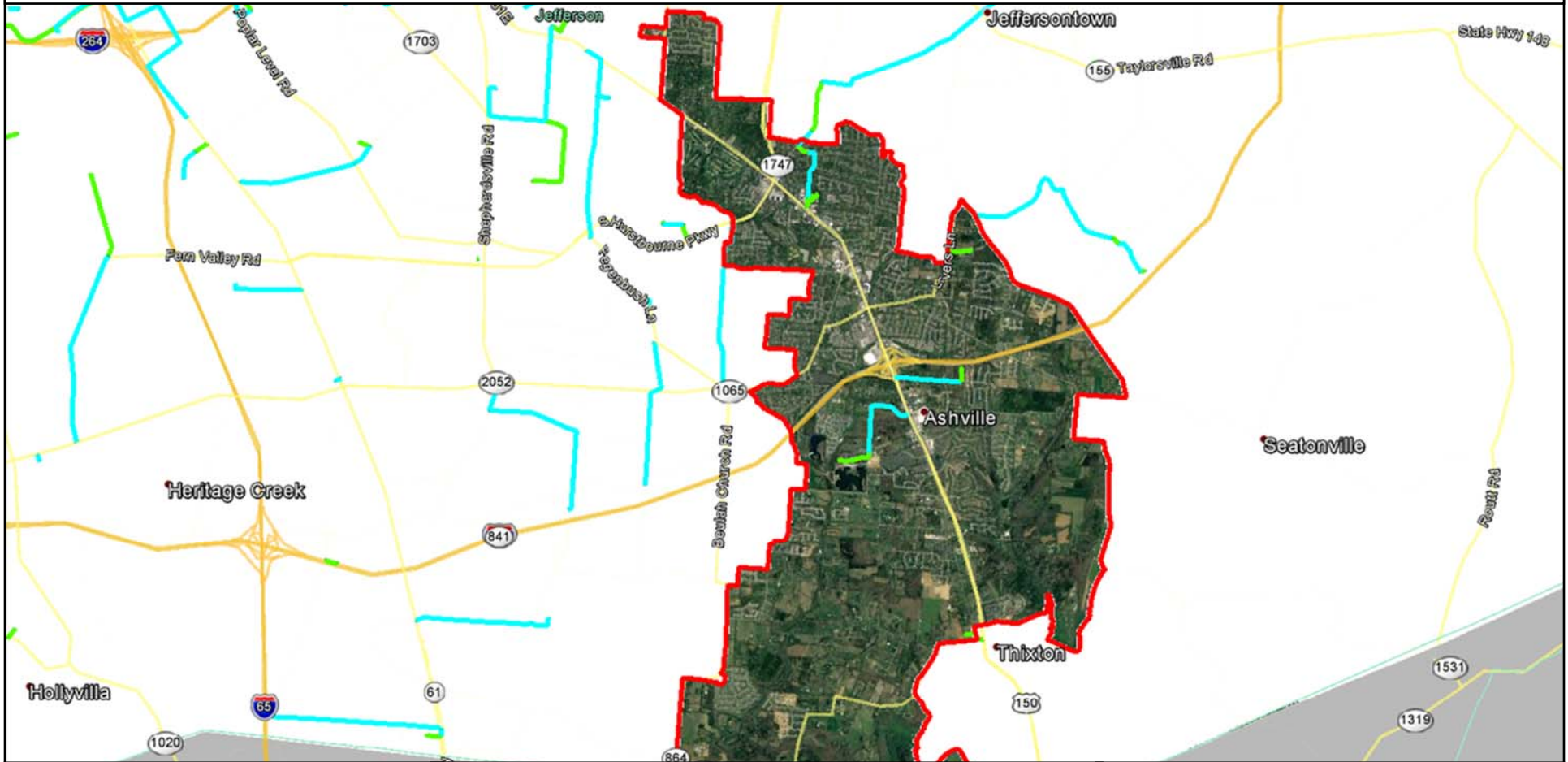
Final design not yet completed, thus routes subject to change.

Confidentiality Statement: Verizon/MCImetro Confidential and Proprietary. May Contain Trade Secrets, or Sensitive Commercial or Financial Information. Any Unauthorized Review, Use, Disclosure, Distribution, or Copying is Prohibited
Data Source: VZB | Projection: HLD_328_LOU | Map Created: 5/16/18 | Map Created by: Brian Augustine



Louisville Metro Council District 22

MCImetro Access Transmission Services Corp. d/b/a Verizon Access Transmission Services License Area Planned Fiber Routes



-  Planned Aerial
-  Planned Buried
-  District Outline



Note: This is a PRELIMINARY VIEW only

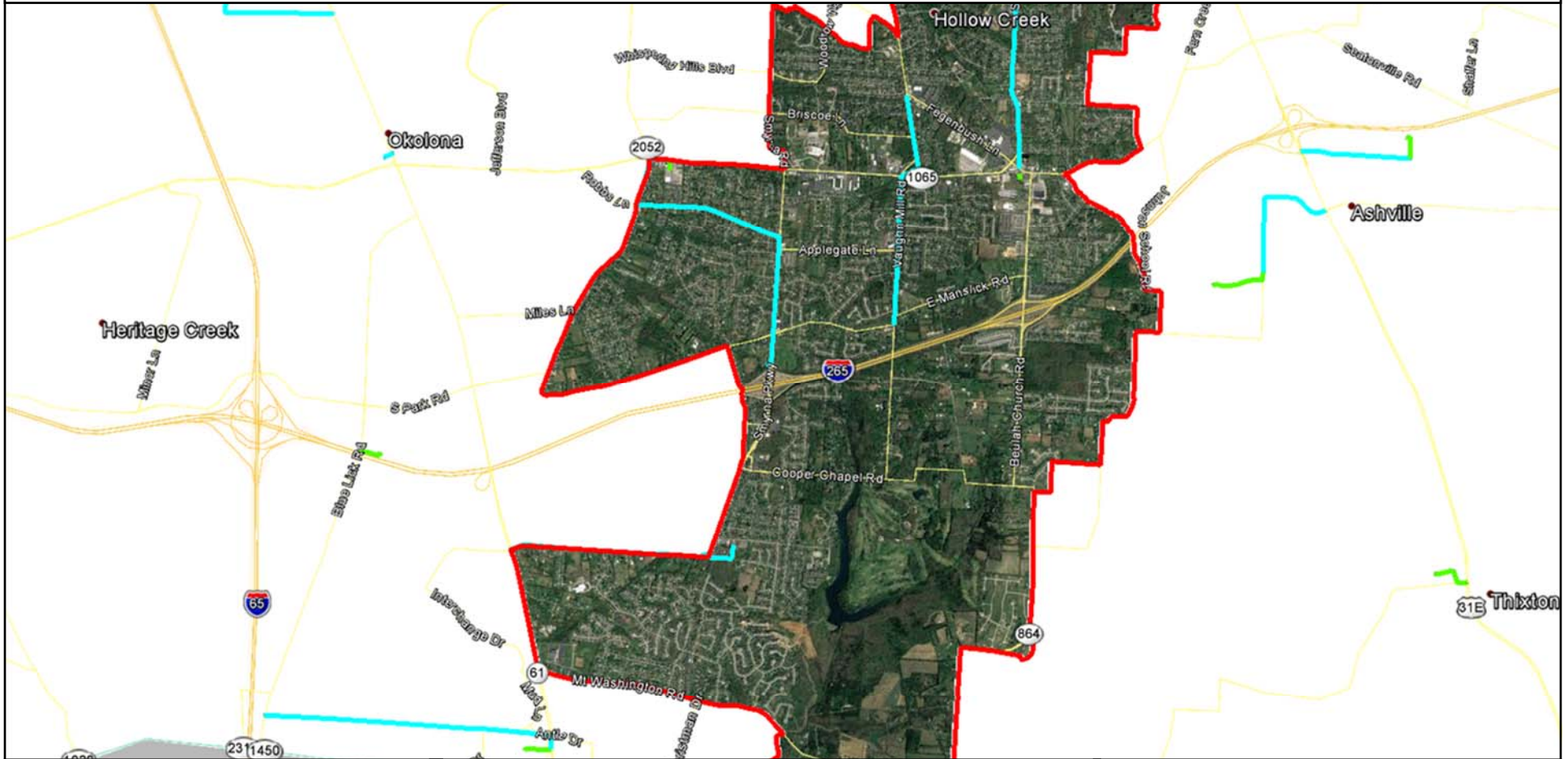
Final design not yet completed, thus routes subject to change.

Confidentiality Statement: Verizon/MCImetro Confidential and Proprietary. May Contain Trade Secrets, or Sensitive Commercial or Financial Information. Any Unauthorized Review, Use, Disclosure, Distribution, or Copying is Prohibited
Data Source: VZB | Projection: HLD_328_LOU | Map Created: 5/16/18 | Map Created by: Brian Augustine



Louisville Metro Council District 23

MCImetro Access Transmission Services Corp. d/b/a Verizon Access Transmission Services License Area Planned Fiber Routes



-  Planned Aerial
-  Planned Buried
-  District Outline



Note: This is a PRELIMINARY VIEW only

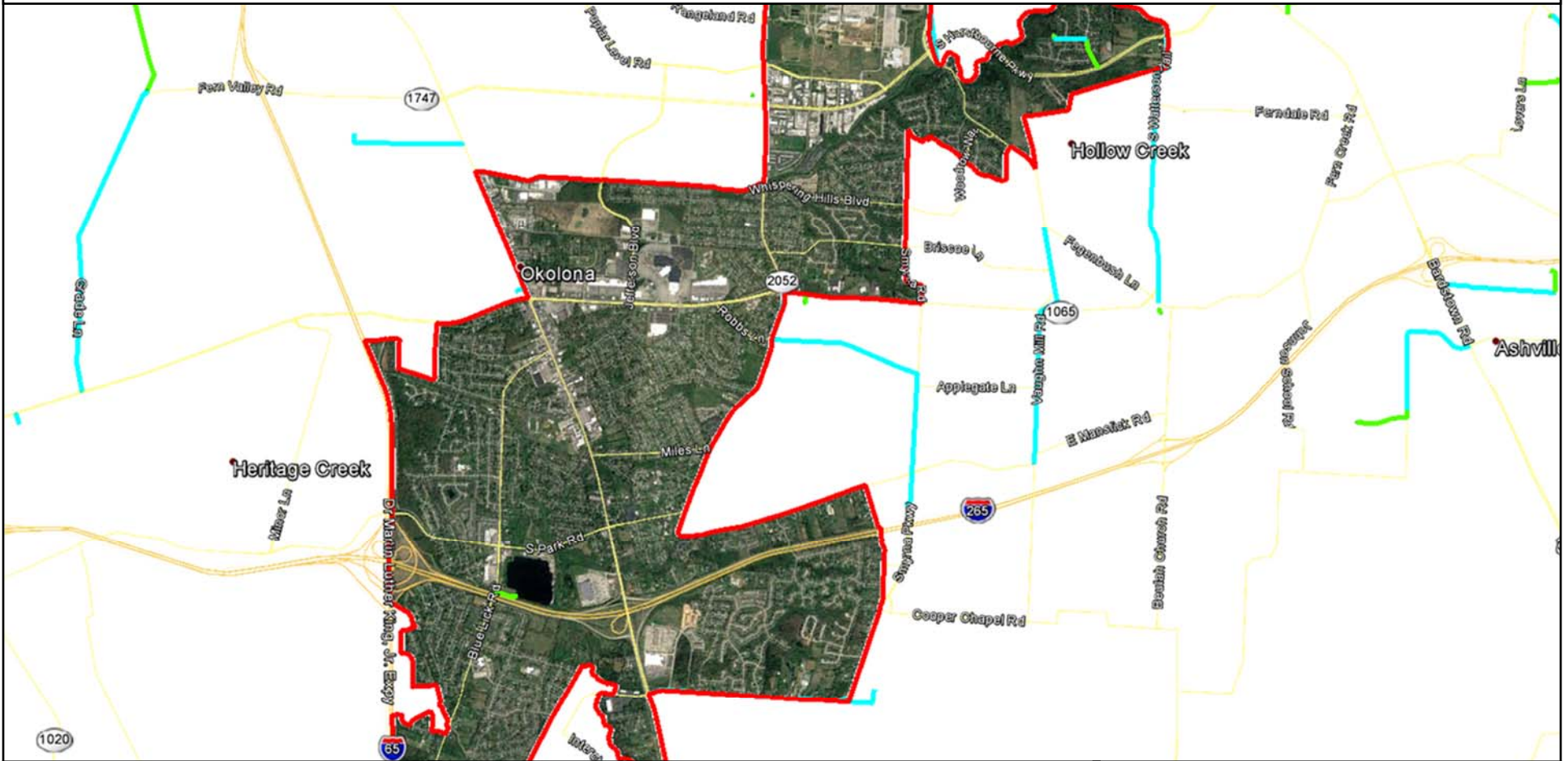
Final design not yet completed, thus routes subject to change.

Confidentiality Statement: Verizon/MCImetro Confidential and Proprietary. May Contain Trade Secrets, or Sensitive Commercial or Financial Information. Any Unauthorized Review, Use, Disclosure, Distribution, or Copying is Prohibited
Data Source: VZB | Projection: HLD_328_LOU | Map Created: 5/16/18 | Map Created by: Brian Augustine



Louisville Metro Council District 24

MCImetro Access Transmission Services Corp. d/b/a Verizon Access Transmission Services License Area Planned Fiber Routes



-  Planned Aerial
-  Planned Buried
-  District Outline



Note: This is a PRELIMINARY VIEW only

Final design not yet completed, thus routes subject to change.

Confidentiality Statement: Verizon/MCImetro Confidential and Proprietary. May Contain Trade Secrets, or Sensitive Commercial or Financial Information. Any Unauthorized Review, Use, Disclosure, Distribution, or Copying is Prohibited
Data Source: VZB | Projection: HLD_328_LOU | Map Created: 5/16/18 | Map Created by: Brian Augustine



Louisville Metro Council District 25

MCImetro Access Transmission Services Corp. d/b/a Verizon Access Transmission Services License Area Planned Fiber Routes



-  Planned Aerial
-  Planned Buried
-  District Outline



Note: This is a PRELIMINARY VIEW only

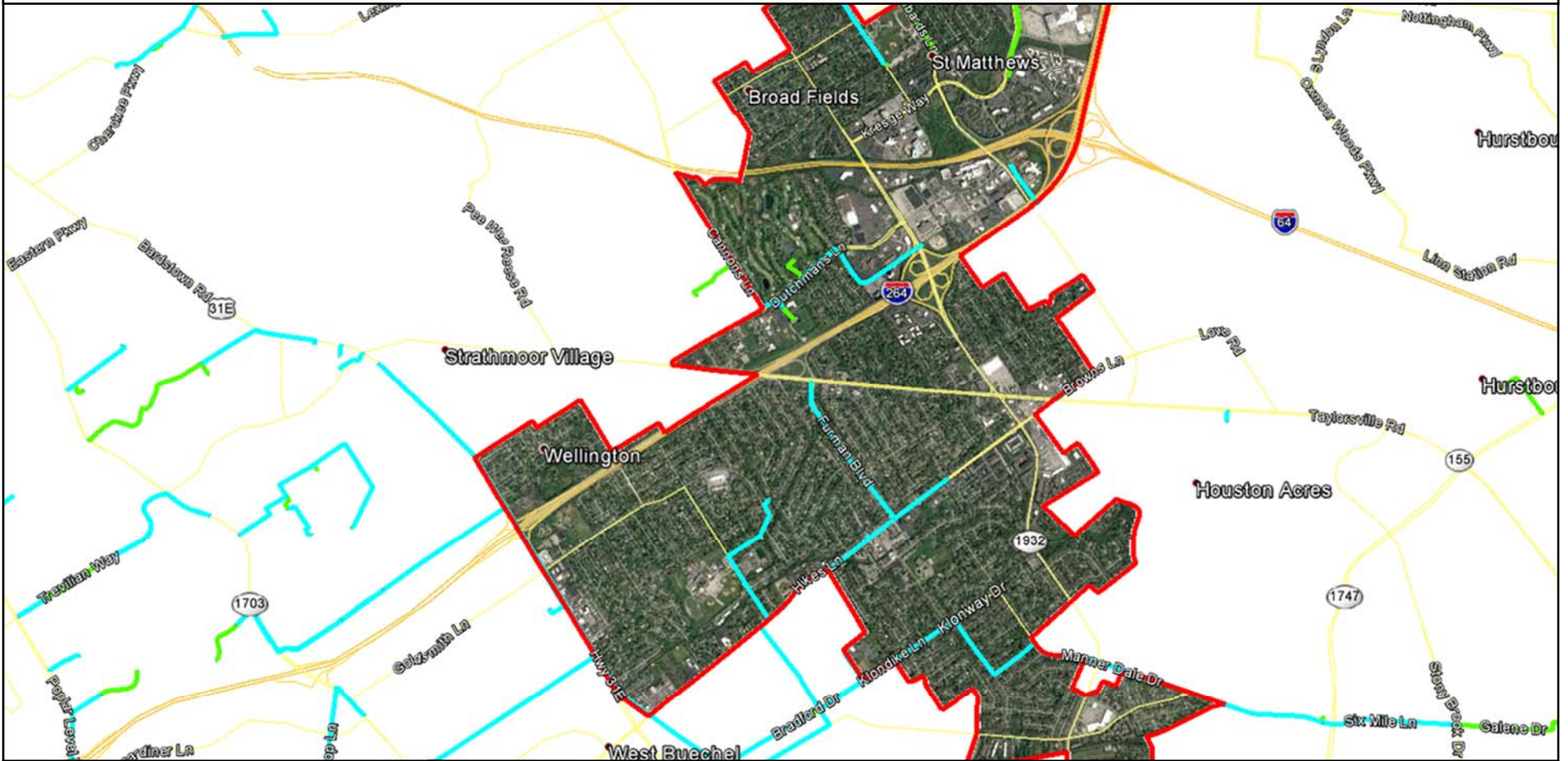
Final design not yet completed, thus routes subject to change.

Confidentiality Statement: Verizon/MCImetro Confidential and Proprietary. May Contain Trade Secrets, or Sensitive Commercial or Financial Information. Any Unauthorized Review, Use, Disclosure, Distribution, or Copying is Prohibited
Data Source: VZB | Projection: HLD_328_LOU | Map Created: 5/16/18 | Map Created by: Brian Augustine



Louisville Metro Council District 26

MCImetro Access Transmission Services Corp. d/b/a Verizon Access Transmission Services License Area Planned Fiber Routes



-  Planned Aerial
-  Planned Buried
-  District Outline



Note: This is a PRELIMINARY VIEW only

Final design not yet completed, thus routes subject to change.
Confidentiality Statement: Verizon/MCImetro Confidential and Proprietary. May Contain Trade Secrets, or Sensitive Commercial or Financial Information. Any Unauthorized Review, Use, Disclosure, Distribution, or Copying is Prohibited
Data Source: VZB | Projection: HLD_328_LOU | Map Created: 5/16/18 | Map Created by: Brian Augustine

