

**Zoom Group
Building
Renovation**
Zoom Group
4545 Taylorsville Rd
Louisville, KY 40220



DATE	DESCRIPTION
03/30/22	FINAL CONSTRUCTION DOCUMENTS

RECEIVED
OCT 17 2022
PLANNING & DESIGN SERVICES

Architect:
K. NORMAN BERRY
ASSOCIATES ARCHITECTS PLLC
815 W. Market Street, Ste. 815
Louisville, KY 40202
502.582.2500

ENGINEER:
BROWN & KUBICON STRUCTURAL
ENGINEERS
8900 Greenway Commons Place - Suite 201
Louisville, KY 40220
502.749.2061

RECEIVED
OCT 17 2022
PLANNING & DESIGN SERVICES

MARCH 31st, 2022 - CONSTRUCTION DOCUMENTS

Sheet Title:
Elevations
Project Number: 210730
Drawn By: bc
Approved By: CY
Date: MARCH 30, 2022
Revisions:

A200

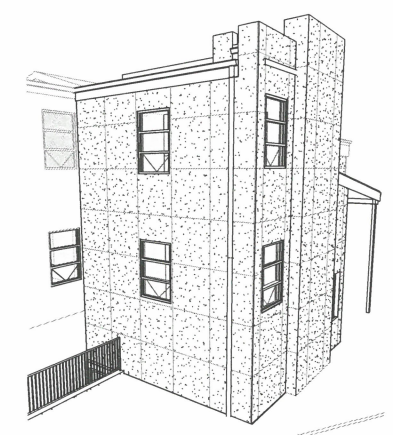
3/30/2022 4:28:41 PM
22-DDP-0117

GENERAL NOTES:

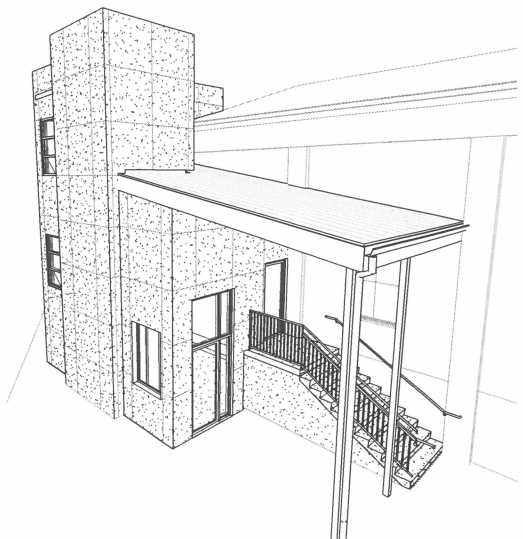
- ALL WALLS AND GYP CEILINGS TO RECEIVE NEW PAINT
- SAND AND REFINISH HARDWOOD FLOORS

KEYNOTES

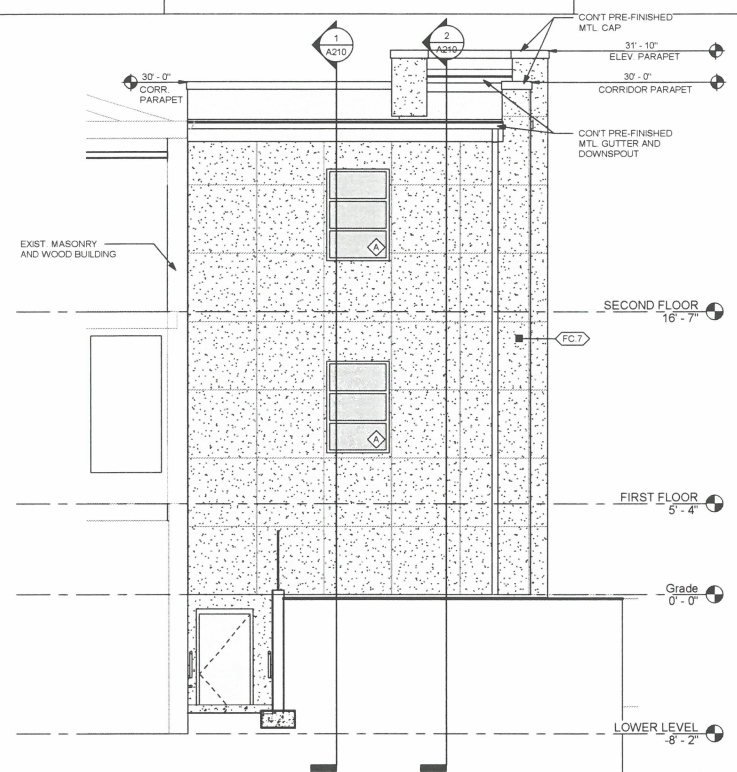
Key	Description
D-27	EXIST. WINDOW TO REMAIN - PROTECT



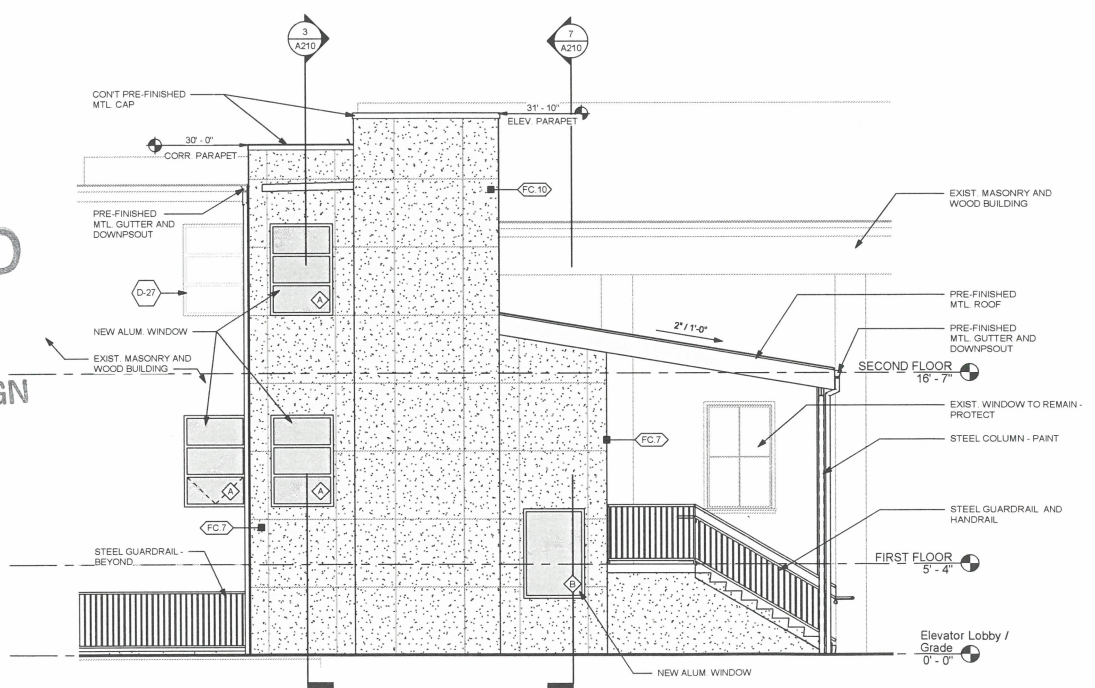
5 NW Corner



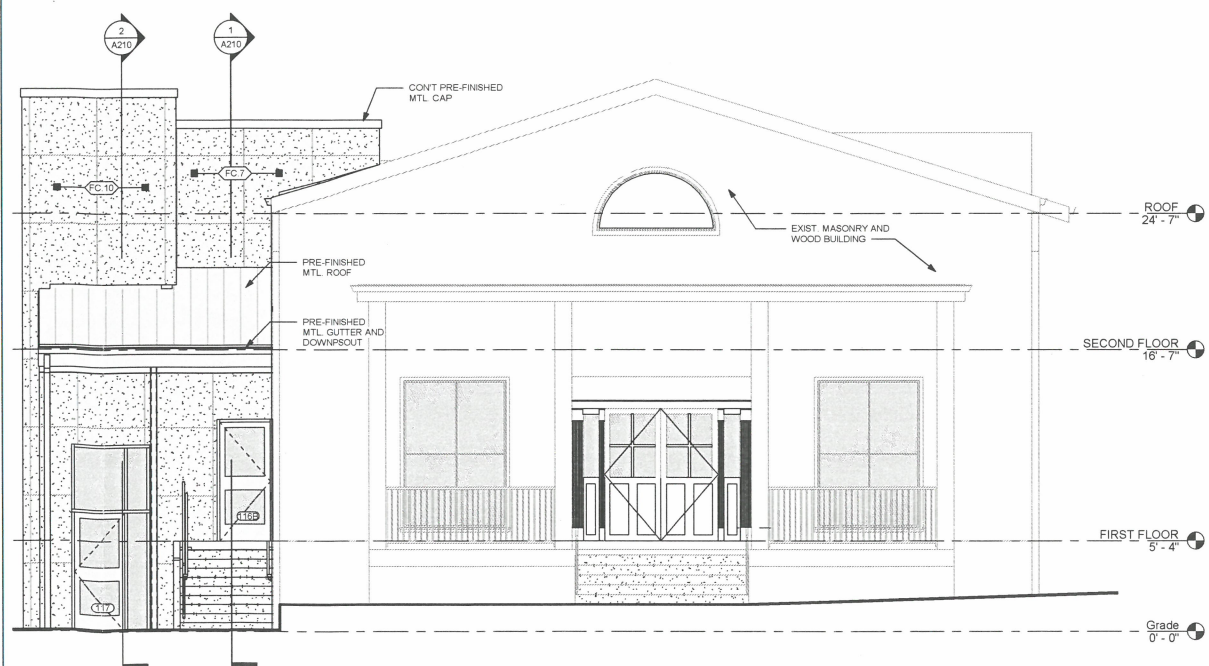
4 SW Corner



3 Partial North Elevation
1/4" = 1'-0"



2 WEST ELEVATION
1/4" = 1'-0"



1 SOUTH ELEVATION
1/4" = 1'-0"

RECEIVED
OCT 17 2022
PLANNING & DESIGN SERVICES