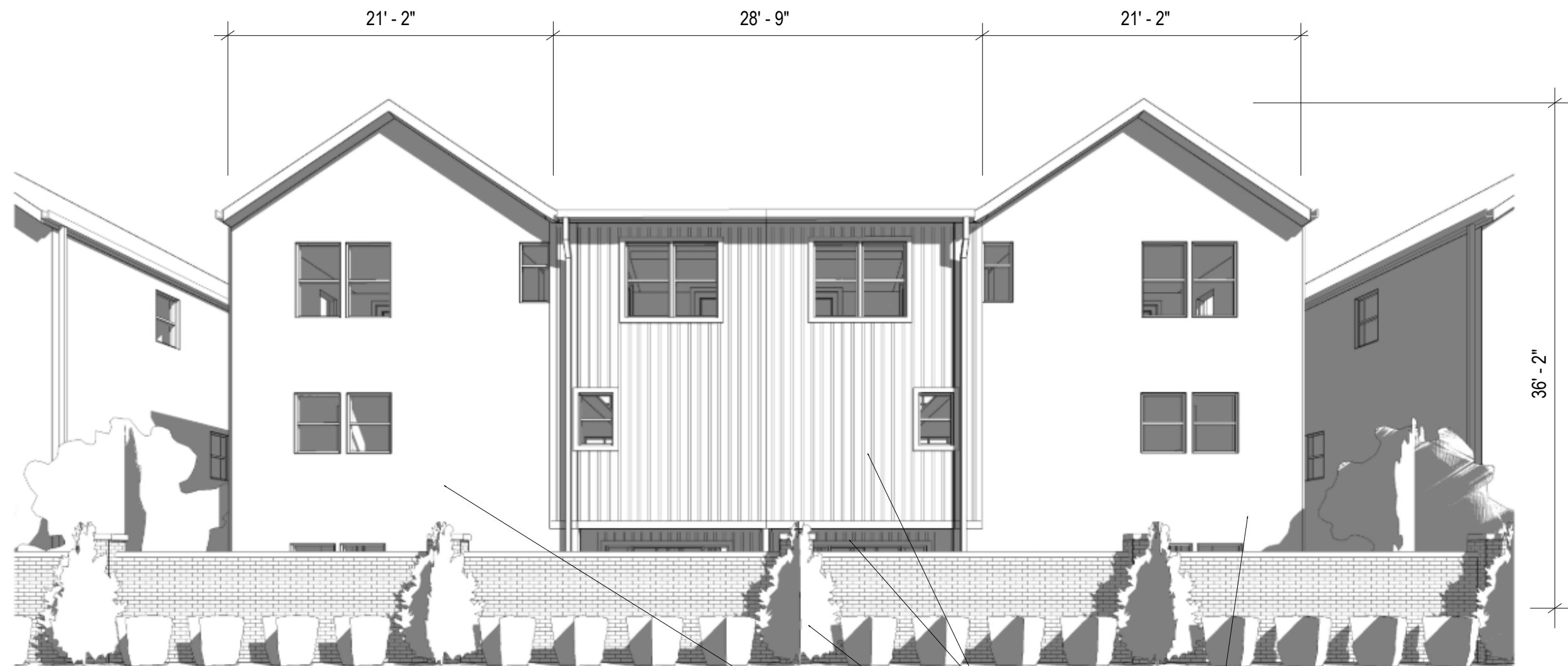


REAR ELEVATION

- BOARD AND BATTEN SIDING, PAINTED DARK
- EXISTING WALL AND LANDSCAPING
- STONE



21' - 2"

28' - 9"

21' - 2"

36' - 2"

BOARD AND BATTEN
SIDING, PAINTED DARK

EXISTING WALL AND
LANDSCAPING

STONE

REAR ELEVATION