

PROJECT ADDRESS: 537 SOUTH 3RD STREET, LOUISVILLE, KY 40202

PRIMARY PARCEL ID: 016A00060000

ZONING DISTRICT: C3

FORM DISTRICT: DOWNTOWN

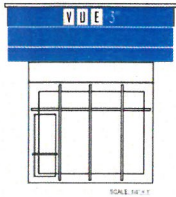


FLAT WALL MOUNTED SIGN ON ELEVATOR TOWER
STRUCTURE AREA 280' SQ FT

EXISTING CANOPY REMOVED

NOTE: PROPERTY CORNER IN FACADE OF BUILDING. (NOT SET)

LEASING ENTRANCE AWNING
SIGN AREA 10.6' SQ FT



SOUTH THIRD STREET 60' R/W

UNDERGROUND ELECTRIC

REMOVE EXISTING CANOPY AND REPLACE WITH METAL AWNING

GUTHRIE STREET 60' R/W

PROJECTING SIGN
STRUCTURE AREA 96.66' SQ FT (9TH STORY)



FBM PROPERTIES, LLC (KY)
D.B. 9821 PG. 016

(DEED 138.00')
S 81°06'18" E 138.80'

BUILDING OVER 0.60'

REFERENCE MAG NAIL #3808 @ 90.00'

GUARD RAIL OVER 1.60'

UTILITY POLE & OVERHEAD WIRES

SEWER

"TRACT 2" BARRINGTON PLACE LLC (MO)
D.B. 7627 PG. 184
2,360 S.F.±

"531 S THIRD ST" (GRAVEL DRIVE)

GUARD RAIL (OVER)

ASPHALT

MAG NAIL #3808

"535 S THIRD ST" 24'± TALL BRICK BUILDING
FOOTPRINT 2,476 S.F.±

GAS METER W/ BOLLARDS

BUILDING CORNER

SOUTH SECOND STREET

SYSTEM PARKING, INC. (KY)
D.B. 9531 PG. 817

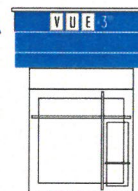


FLAT WALL MOUNTED SIGN ABOVE COLONEL BANNER

STRUCTURE AREA 280' SQ FT

RESIDENT ENTRANCE AWNING

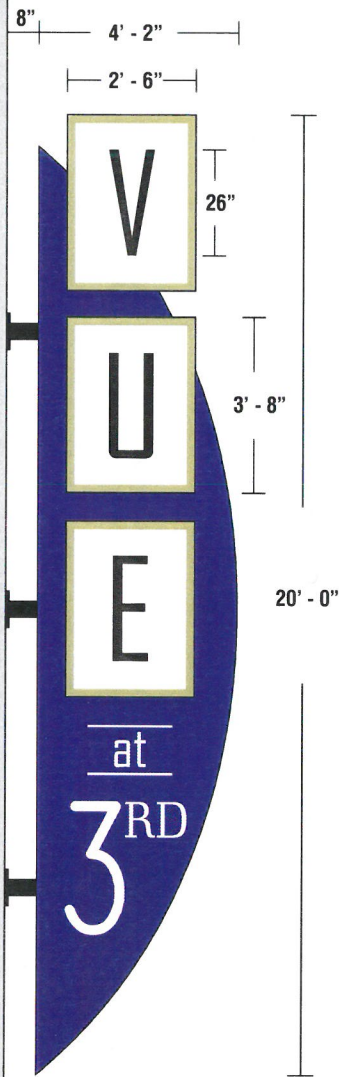
SIGN AREA 10.6' SQ FT



SIDE VIEW

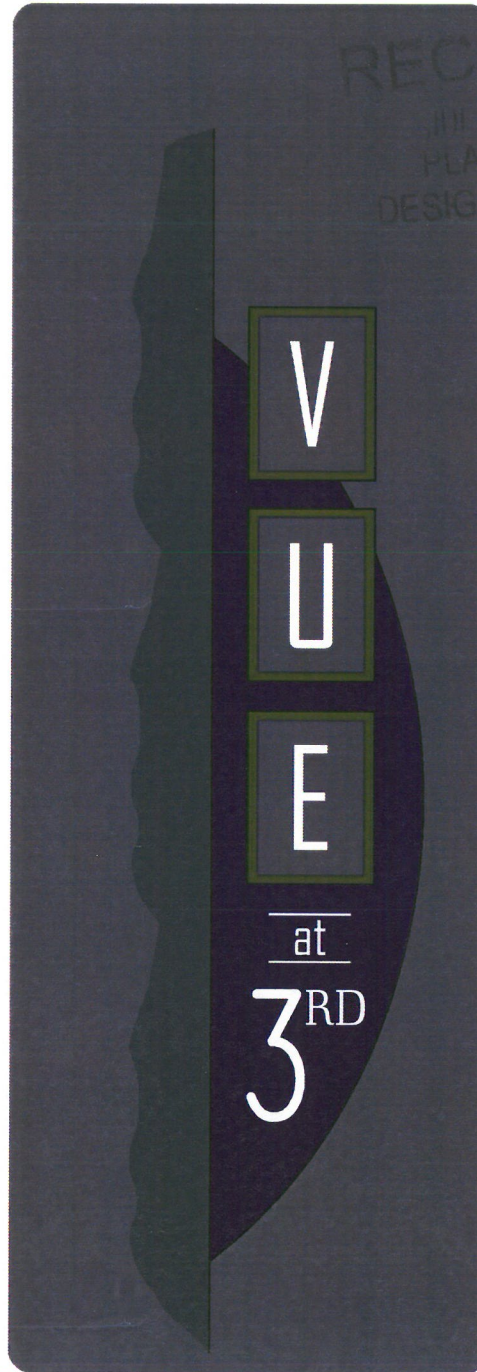


DAY VIEW

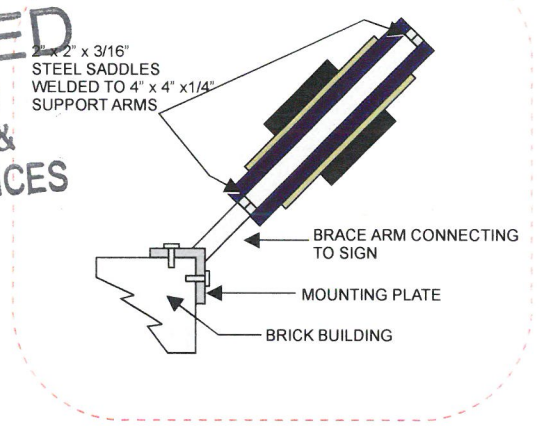


**STRUCTURE AREA
96.66' SQ FT**

NIGHT VIEW



TOP VIEW



RECEIVED
JUL 18 2016
PLANNING &
DESIGN SERVICES



PROJECTING SIGN SHALL NOT PROJECT MORE THAN 8 FT FROM THE BUILDING FACADE AND MUST NOT EXTEND BELOW 9' ABOVE THE GROUND OR SIDEWALK.

Projecting Blade Sign - Corner of 3rd St. and Guthrie St.

Scale: 1/4" = 1'

16 WAIVER 1027

RECEIVED
JUL 18 2016
PLANNING &
DESIGN SERVICES

DAY VIEW

14'

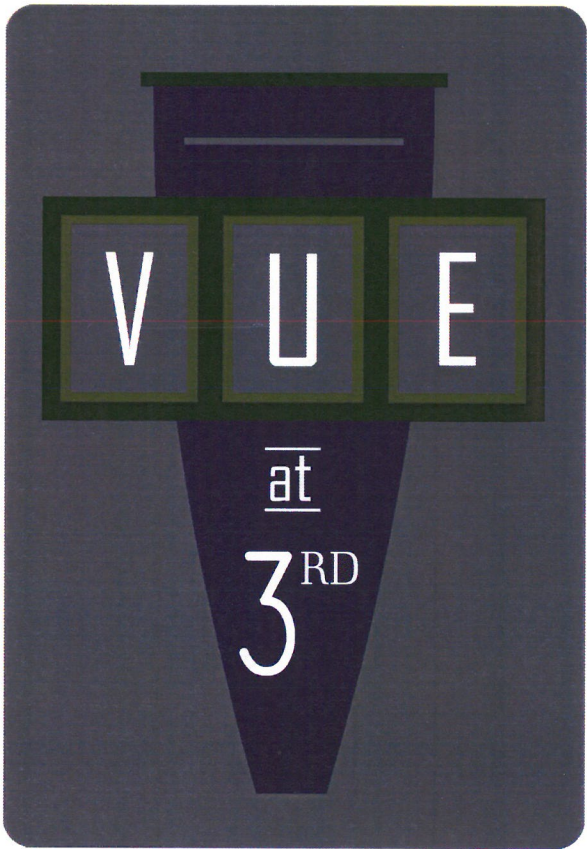


20'

SCALE: 3/16" = 1'

STRUCTURE AREA
280' SQ FT

NIGHT VIEW



Flat Wall Mounted Sign - 2nd St.

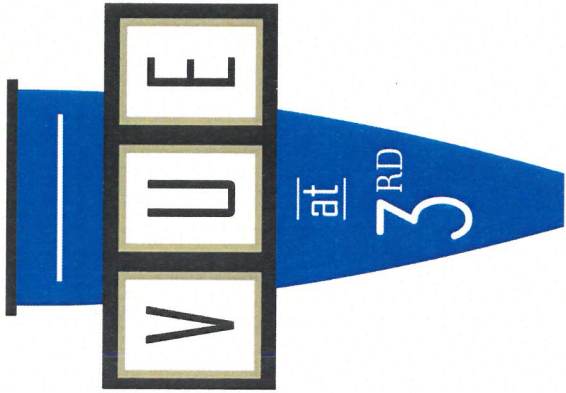
Scale: 1/4" = 1'



16 WAIVER 1027

DAY VIEW

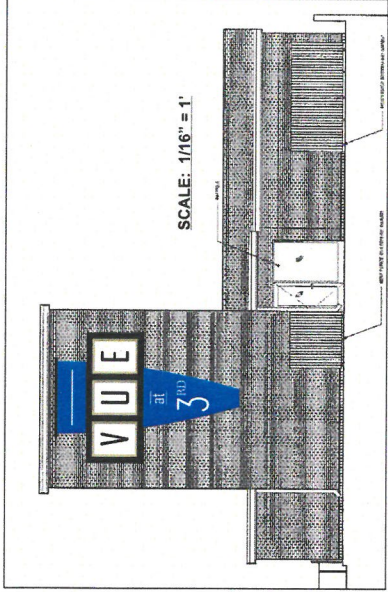
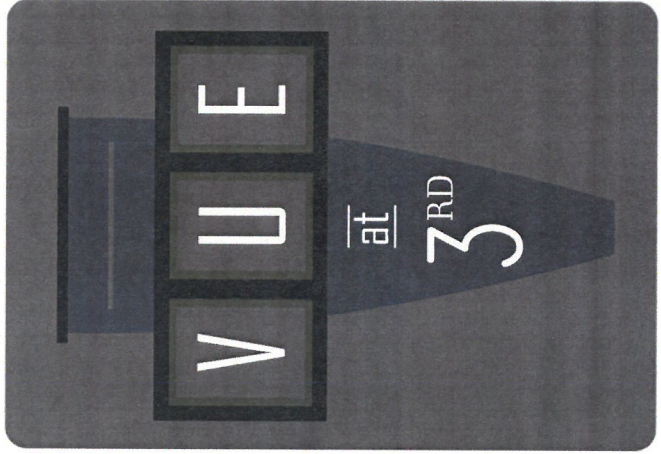
14'



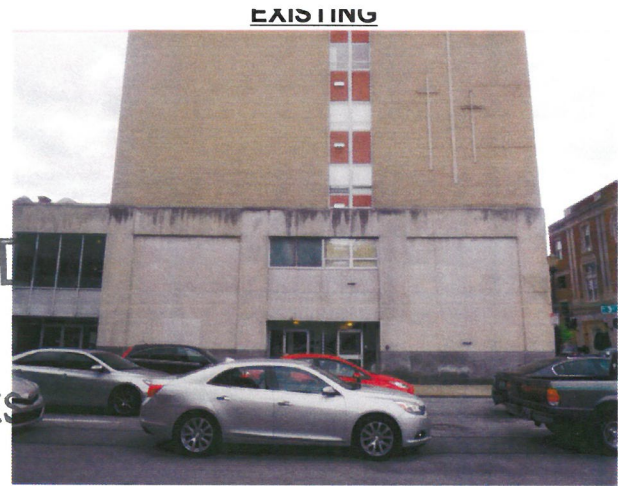
20'

SCALE: 3/16" = 1'

NIGHT VIEW



7/26/16

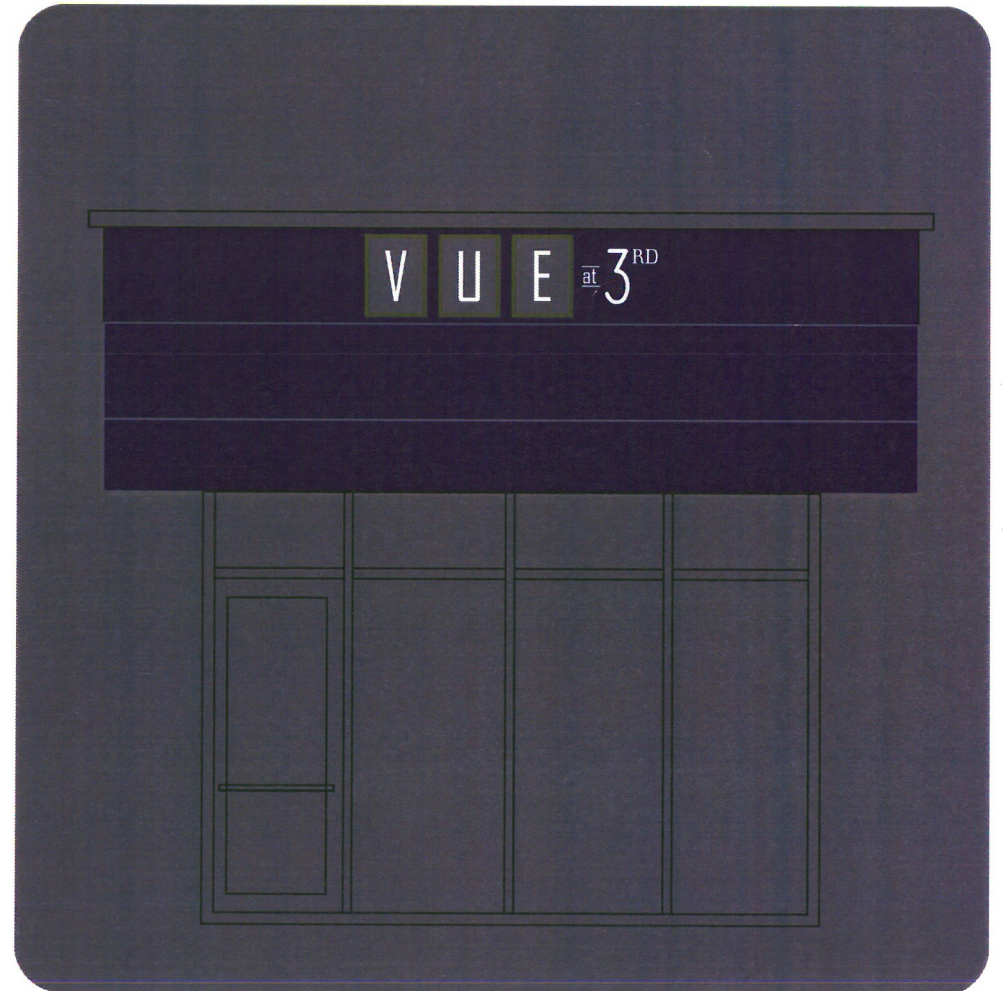
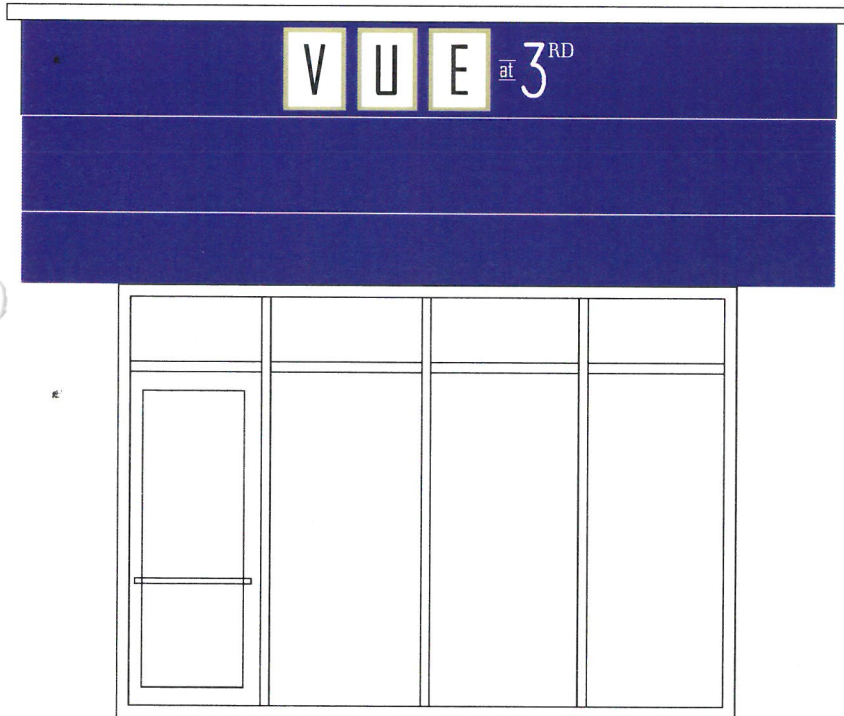


RECEIVED
MAY 18 2016
PLANNING &
DESIGN SERVICES

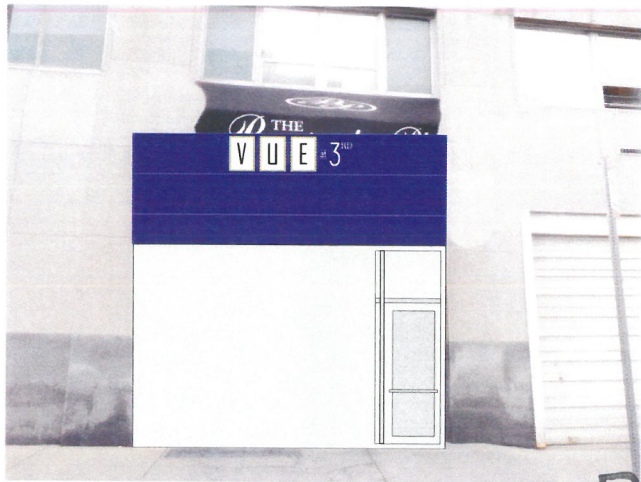
EXISTING

NIGHT VIEW

DAY VIEW



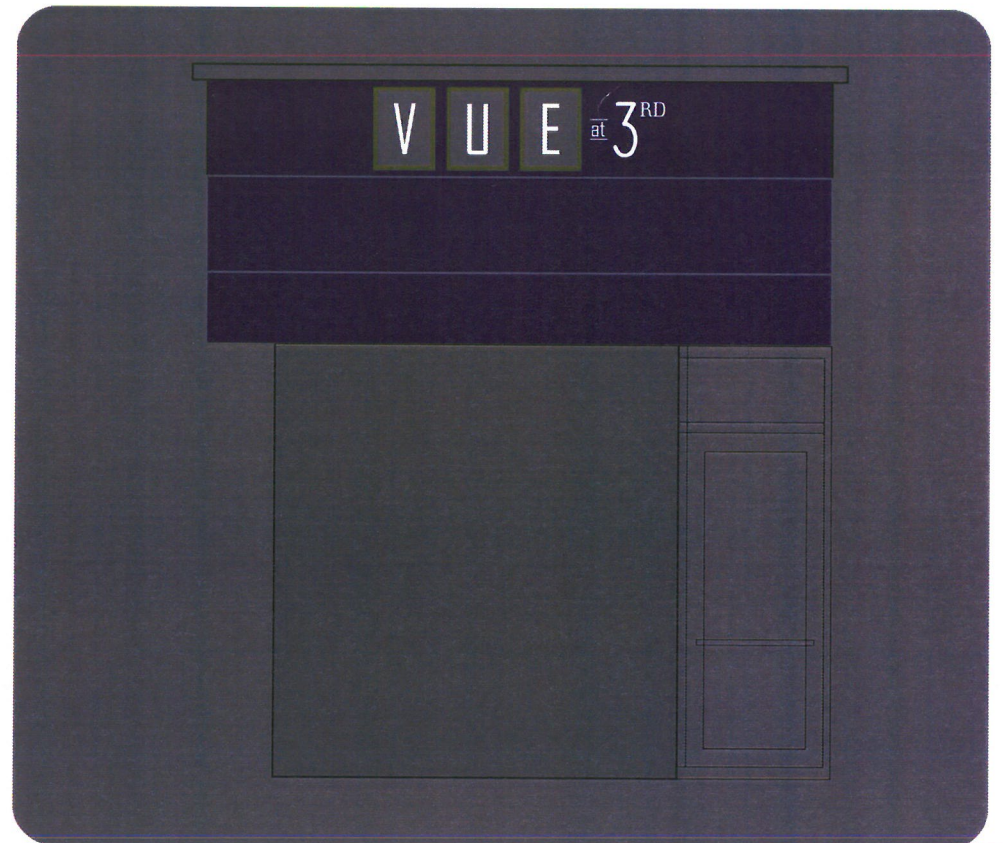
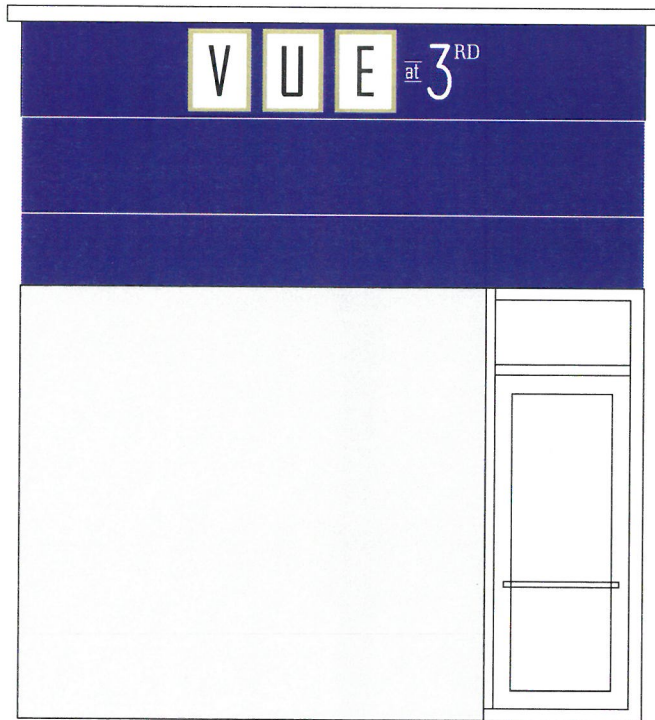
SCALE: 1/4" = 1'



RECEIVED
JUL 18 2011
PLANNING &
DESIGN SERVICES

NIGHT VIEW

DAY VIEW



Resident Entrance Awning - Guthrie St.

SCALE: 1/4" = 1'