

**RECEIVED**  
OCT 10 2018  
PLANNING & DESIGN SERVICES

Mark	Manufacturer	Color/Finish	Comments
E-02	Dryvit	PPG 351-S Vanity	See Notes - follow Manufacturer Requirements
E-03	Dryvit	PPG 17-12 GRANADA	See Notes - follow Manufacturer Requirements
Painted Brick			
PB-2	Sherwin Williams	SW 7004 SNOWBOUND	See Notes - follow Manufacturer Requirements
PB-2	Sherwin Williams	COLOR TO MATCH - PPG 351-S VANITY	See Notes - follow Manufacturer Requirements
Textured Acrylic Coating			
TC-1	Dryvit	TAF52 Revvit Color: SW7004 SNOWBOUND	See Notes - follow Manufacturer Requirements (Price PB-1 as alternate)
TC-2	Dryvit	TAF52 Revvit Color: PPG 351-S Vanity	See Notes - follow Manufacturer Requirements (Price PB-2 as alternate)

**NOTES**

- E.F.F.S. BASIS OF DESIGN - DRYVIT SYSTEMS INC. DRYVIT OUTSULATION PLUS MID EXTERIOR INSULATION AND FINISH SYSTEM, CLASS PB WITH MOISTURE DRAINAGE OR SIMILAR SYSTEM BY STD COMB OR PAREX U.S.A.
- FINISHES TAGGED AS TC-1 AND TC-2 - PRICE DRYVIT-REVVIT-2 AS BASE BID AT AREAS SHOWN. PRICE PAINTED BRICK PB-1 AND PB-2 AS ALTERNATE IN THESE LOCATIONS
- EXPOSED BRICK INSIDE ENTRY VESTIBULE TO BE PAINTED BRICK. PREPARE SURFACE PER MANUFACTURER REQUIREMENTS. CAULK AND SEAL, APPLY ONE COAT SHERWIN WILLIAMS LEXON PRIMER FOLLOWED BY TWO FINISH COATS OF SHERWIN WILLIAMS A-100 FLAT PAINT

**HODGES**

WWW.HODGESUSA.COM  
912.987.1000  
13642 OMEGA DALLAS TX 75244

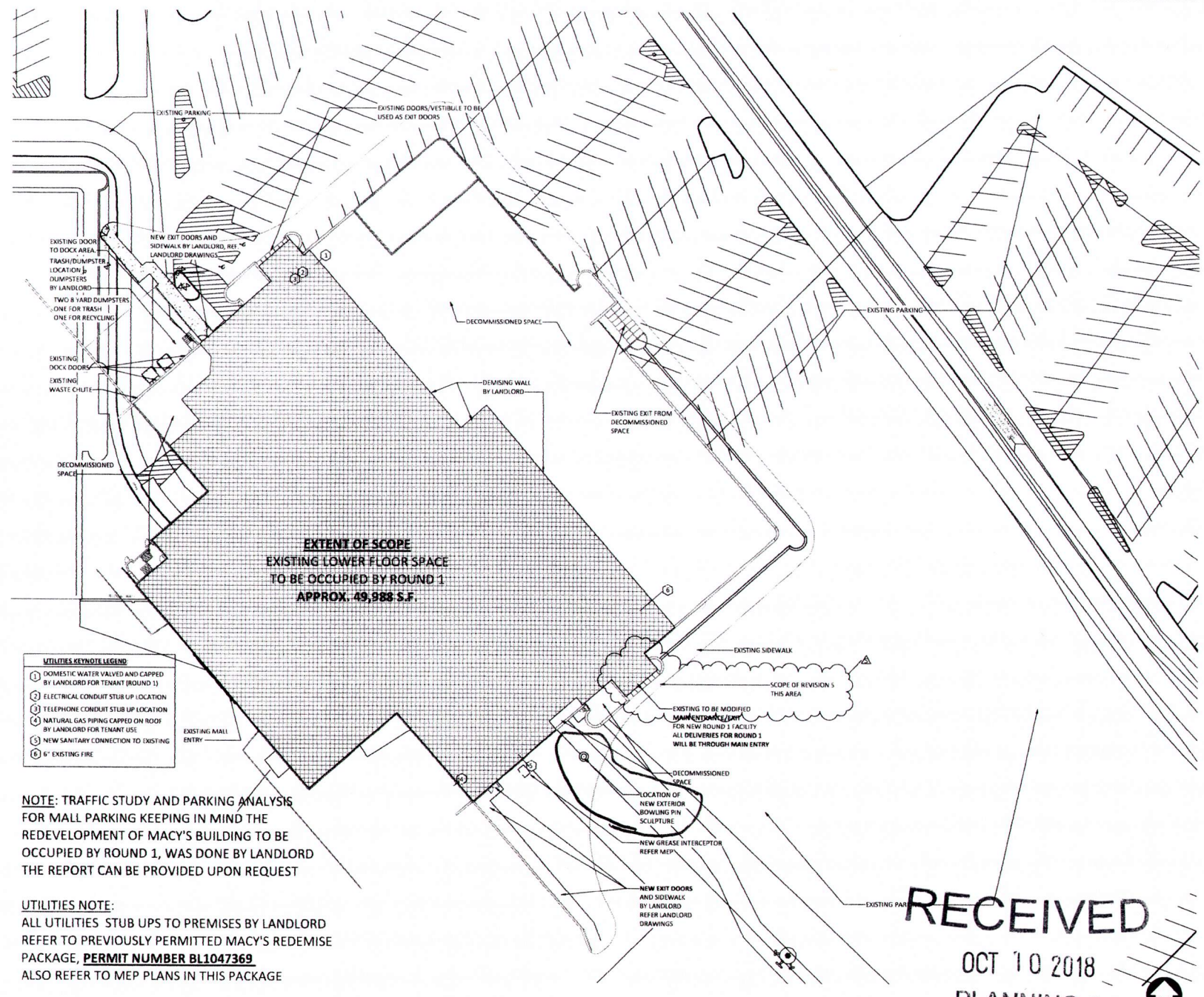


PROJECT NUMBER: 17088-01

DRAWN BY: [Blank] CHECKED BY: [Blank]

Author: [Blank] Checker: [Blank]

No.	Description	Date
1	For Permit	2018 03 01
2	For Bid	2018 04 12
3	For Construction Rev.	2018 05 29
4	Revision 3	2018 08 14
5	Revision 4	2018 08 07



**EXTENT OF SCOPE**  
EXISTING LOWER FLOOR SPACE  
TO BE OCCUPIED BY ROUND 1  
APPROX. 49,888 S.F.

- UTILITIES KEYNOTE LEGEND**
- ① DOMESTIC WATER VALVED AND CAPPED BY LANDLORD FOR TENANT (ROUND 1)
  - ② ELECTRICAL CONDUIT STUB UP LOCATION
  - ③ TELEPHONE CONDUIT STUB UP LOCATION
  - ④ NATURAL GAS PIPING CAPPED ON ROOF BY LANDLORD FOR TENANT USE
  - ⑤ NEW SANITARY CONNECTION TO EXISTING
  - ⑥ 6" EXISTING FIRE

**NOTE:** TRAFFIC STUDY AND PARKING ANALYSIS FOR MALL PARKING KEEPING IN MIND THE REDEVELOPMENT OF MACY'S BUILDING TO BE OCCUPIED BY ROUND 1, WAS DONE BY LANDLORD THE REPORT CAN BE PROVIDED UPON REQUEST

**UTILITIES NOTE:**  
ALL UTILITIES STUB UPS TO PREMISES BY LANDLORD REFER TO PREVIOUSLY PERMITTED MACY'S REMISE PACKAGE, **PERMIT NUMBER BL1047369**  
ALSO REFER TO MEP PLANS IN THIS PACKAGE

① Site Plan  
1" = 20'-0"

**RECEIVED**  
OCT 10 2018  
PLANNING & DESIGN SERVICES

**HODGES**  
ARCHITECTURE  
WWW.HODGESUSA.COM  
972.387.1000  
13842 OMEGA, DALLAS, TX 75244



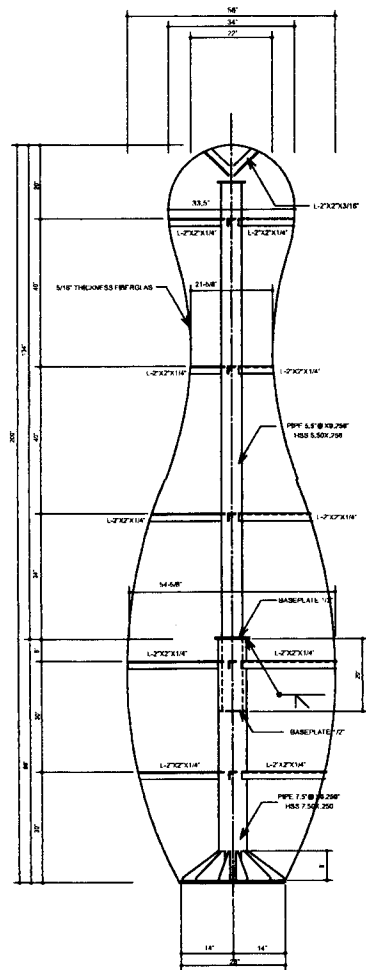
PROJECT NUMBER  
17086-01

DRAWN BY: \_\_\_\_\_ CHECKED BY: \_\_\_\_\_  
Author: \_\_\_\_\_ Checker: \_\_\_\_\_

REVISION SCHEDULE		
No.	Description	Date
1	For Permit	2018.03.01
1	For Bid	2018.04.12
1	For Construction (Rev. 1)	2018.05.26
2	Revision 5	2018.07.16

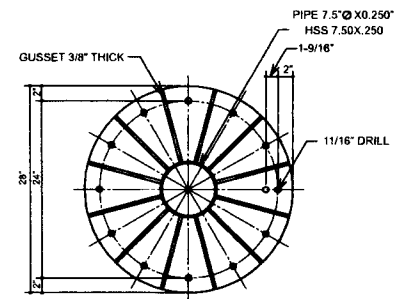
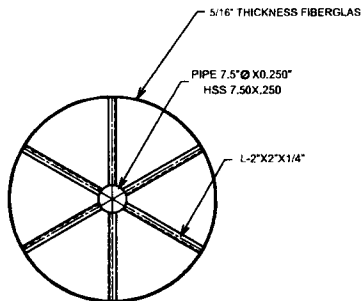
**A1.00**  
Site Plan

8 VARIANCE 1095

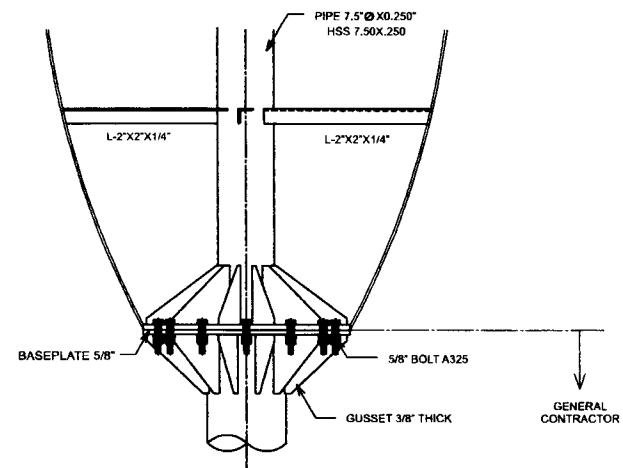


STRUCTURE DETAIL

17'-0" HEIGHT (w/pick-up ring)  
 22"-56" DIAMETER  
 1,350 lbs. WEIGHT  
 5/16" THICKNESS FIBERGLAS  
 MATTHEWS PAINT FINISH



ATTACHMENT PLATE PLAN VIEW



ATTACHMENT DETAIL

**RECEIVED**  
 OCT 10 2018  
 PLANNING &  
 DESIGN SERVICES