

21-STRCLOSURE-0028

Linde Lane Street Closure



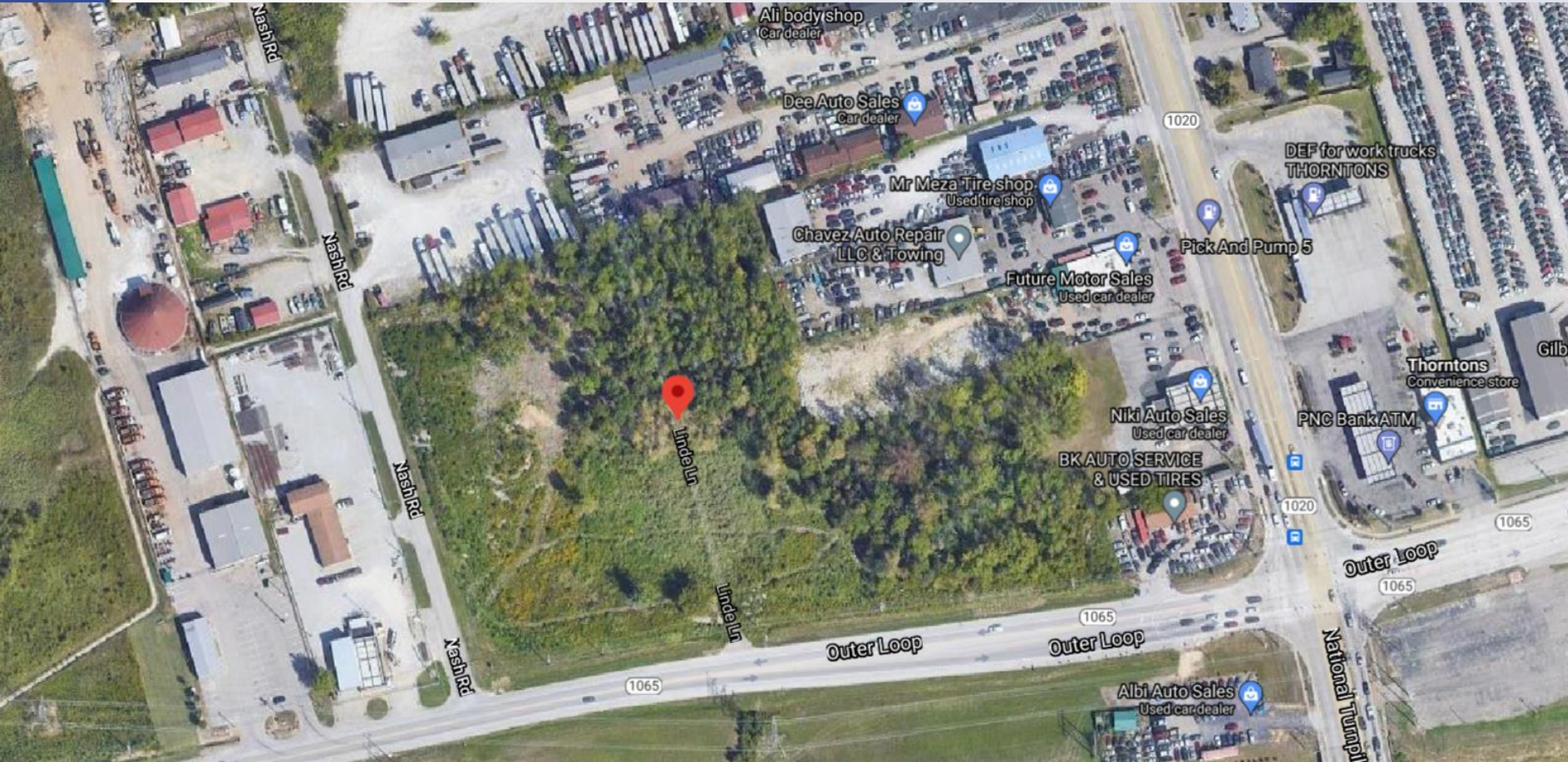
Louisville Metro Land Development and Transportation
Committee

Molly Clark, Planner I
January 13, 2022

Request(s)

- Closure of a private roadway

Site Context



Case Summary

- M2, Suburban Workplace Form District
- Closing Linde Lane in it's entirety, which is a private road.
- Related to 21-CAT2-0012, proposed truck repair and truck parking

Zoning/Form Districts



Aerial Photo



Site Photos-Subject Property





Staff Finding

- The proposal is ready to docket for the Consent Agenda of the Planning Commission.

Required Actions

Schedule for the Consent Agenda before the next available Planning Commission