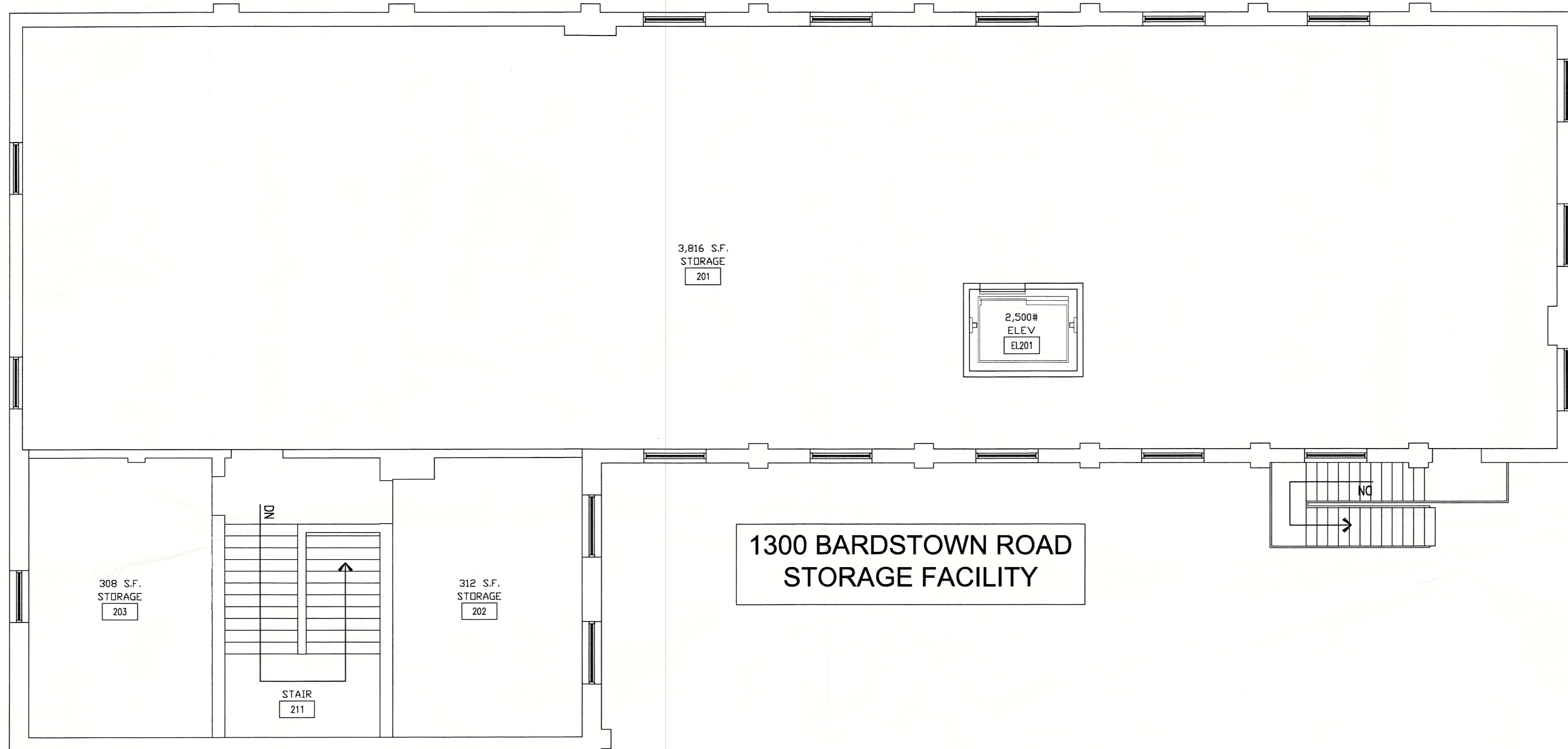


1306 BARDSTOWN ROAD
AIR B&B



1300 BARDSTOWN ROAD
STORAGE FACILITY

01- SECOND FLOOR RENOVATION PLAN

SCALE: 3/16" = 1'-0"

RECEIVED
JUL 23 2018
PLANNING &
DESIGN SERVICES

LOCATION	BASEMENT GROSS	BSMT. NET STG.	FLOOR-1 GROSS	FLR-1 NET STG.	FLOOR-2 GROSS	FLR-2 NET STG.	FLR-2 TIER-2 NET STG.	TOTAL GROSS SQ. FT.	TOTAL NET STG. SQ. FT.	BUILDING HEIGHT
1300 BARDSTOWN ROAD	5,250 SQ. FT.	4,197 SQ. FT.	5,260 SQ. FT.	3,335 SQ. FT.	5,070 SQ. FT.	4,436 SQ. FT.	???? SQ. FT.	15,580 SQ. FT.	11,968 SQ. FT.	38' ROSEWOOD ENTRANCE TO TOP OF PARAPET
1306 BARDSTOWN ROAD	730 SQ. FT.	NA	1,700 SQ. FT.	270 SQ. FT.	1,700 SQ. FT.	NA	NA	4,130 SQ. FT.	270 SQ. FT.	42' ROSEWOOD ENTRANCE TO RIDGE LINE
CONNECTOR	NA	NA	30 SQ. FT.	NA	NA	NA	NA	30 SQ. FT.	NA	
TOTALS	5,980 SQ. FT.	???? SQ. FT.	6,990 SQ. FT.	4,512 SQ. FT.	6,770 SQ. FT.	4,436 SQ. FT.	???? SQ. FT.	19,740 TOTAL GROSS SQ. FT.	12,238 SQ. FT. NET STORAGE	

GROSS SQUARE FOOTAGE = OUTSIDE OF EXTERIOR WALLS NET STORAGE SQUARE FOOTAGE = INSIDE WALL OF ROOM OR SPACE ALL AREA & HEIGHT VALUES ARE PRELIMINARY - NET STORAGE AREA EXCLUDES FIRST FLOOR 1,000 SQ. FT. RETAIL AREA

Owner
1300 Bardstown Road, LLC
7400 South Park Place, Suite 1
Louisville, Kentucky 40222

Renovation For
Environmentally Controlled Storage
HIGHLAND CUBES
1300 Bardstown Road
Louisville, Kentucky 40204

Edward Eiche
Architect
10011 Tuppence Trace
Louisville, Kentucky 40223
502-797-1441

DRAWN BY
REVIEW BY EKE
DATE 6/1/18
SHEET INDEX
FLOOR-2
RENOVATION PLAN

REVISIONS

A1.06
SHEET NUMBER