

WEST ELEVATION

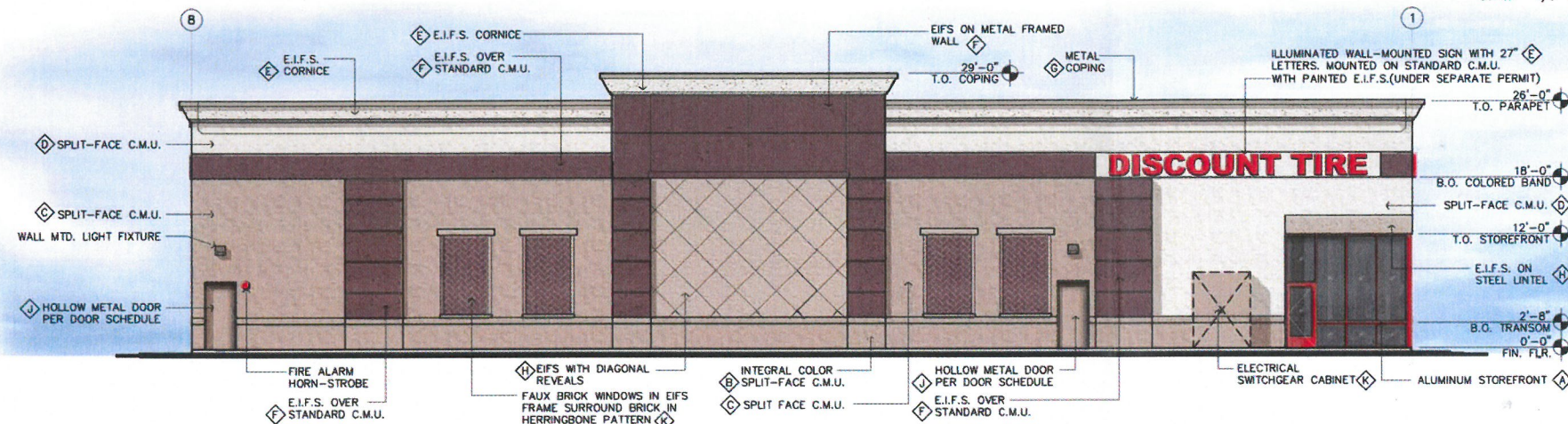
SCALE: 1/8" = 1'-0"



EAST ELEVATION (Dixie Hwy)

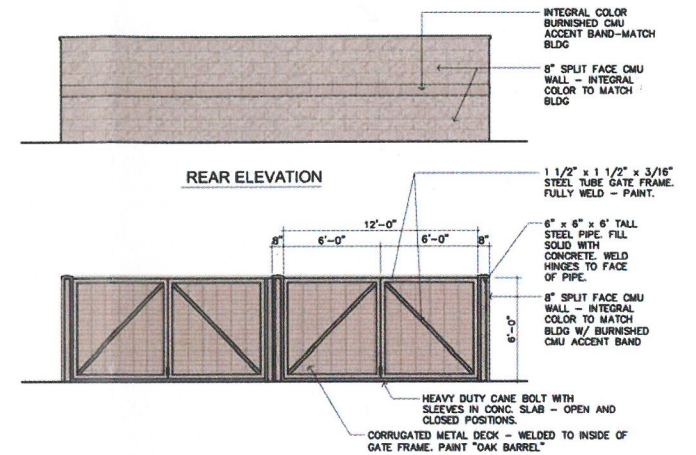
SCALE: 1/8" = 1'-0"

| FINISH LEGEND | |
|---------------|---|
| ⓐ | ANODIZED ALUMINUM STOREFRONT SYSTEM MANUFACTURER'S STANDARD COLOR TO MATCH "BANNER RED" |
| ⓑ | INTEGRAL COLOR C.M.U. (SPLIT-FACE OR BURNISHED AS NOTED) TO MATCH "OAK BARREL" |
| ⓒ | GRAY SPLIT-FACE CMU - PAINTED TO MATCH "OAK BARREL" |
| ⓓ | GRAY SPLIT-FACE CMU - PAINT SHERWIN WILLIAMS "ANTIQUE WHITE" |
| ⓔ | PAINT - SHERWIN WILLIAMS #6119 "ANTIQUE WHITE" |
| ⓕ | E.I.F.S. BAND PAINT SHERWIN WILLIAMS SW#7585 "SUNDRIED TOMATO" |
| ⓖ | METAL COPING - FACTORY PAINTED / INTEGRAL COLOR TO MATCH BERRIDGE "SIERRA TAN" COLOR |
| ⓗ | EXPOSED STEEL / EIFS - PAINTED TO MATCH "OAK BARREL" |
| ⓓ | STEEL BOLLARDS - PAINTED TO MATCH "OAK BARREL" |
| ⓓ | HOLLOW METAL DOORS - PAINTED TO MATCH "OAK BARREL" |



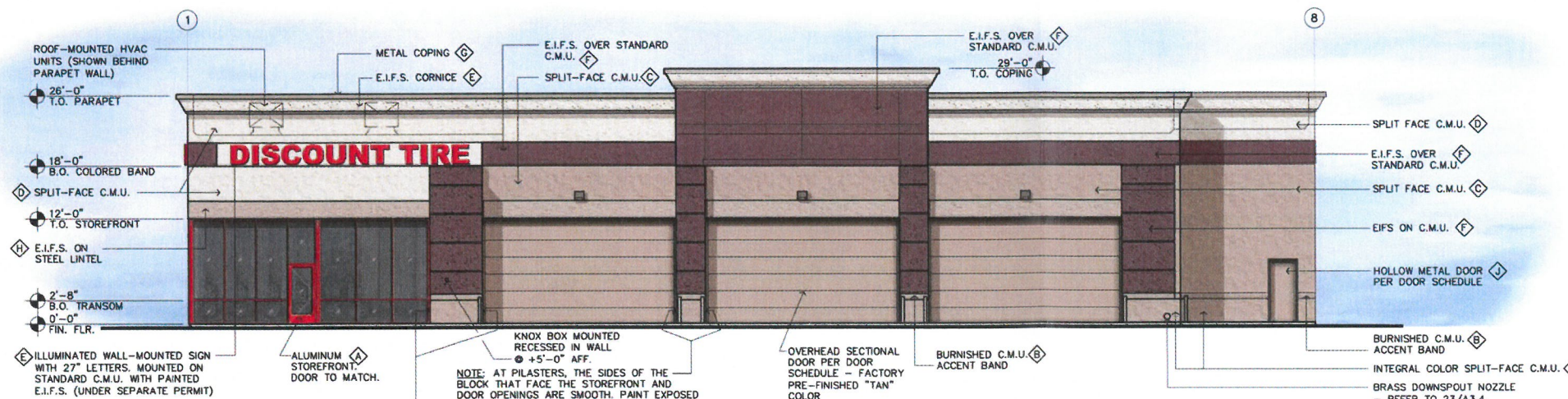
SOUTH ELEVATION (Kerrick Lane)

SCALE: 1/8" = 1'-0"



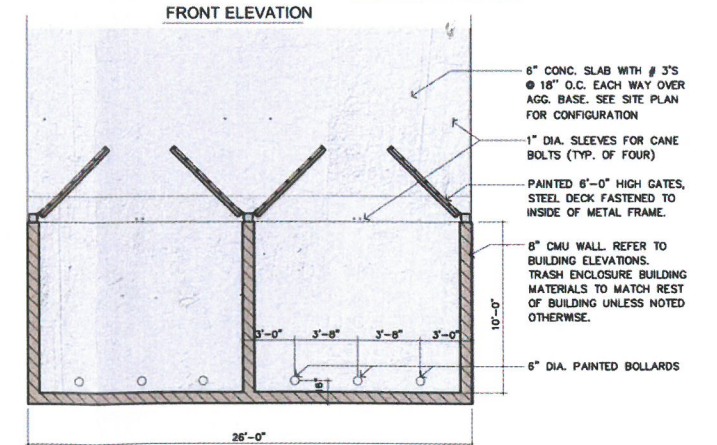
REAR ELEVATION

FRONT ELEVATION



NORTH ELEVATION

SCALE: 1/8" = 1'-0"



TRASH ENCLOSURE PLAN / ELEVATIONS

1/8" = 1'-0"

REV:
DATE: 10.21.15
JOB # A.150924

ALT - 1L.A

Sheet No.

A.3



THIS PLAN IS PROPERTY OF PLUMP GROUP ARCHITECTURE & ENGINEERING. THIS DRAWING IS LOANED WITHOUT OTHER CONSIDERATION THAN THE AGREEMENT AND CONDITION THAT IT IS NOT TO BE REPRODUCED, COPIED, OR OTHERWISE DISPOSED OF, DIRECTLY OR INDIRECTLY, AND IS NOT TO BE USED IN WHOLE OR IN PART TO ASSIST IN MAKING OR TO FURNISH ANY INFORMATION FOR THE MAKING OF DRAWINGS, PRINTS, APPARATUS OR PARTS THEREOF. THE ACCEPTANCE OF THIS DRAWING WILL BE CONSTRUED AS AN ACCEPTANCE OF THE FOREGOING CONDITIONS.

CONCEPTUAL ELEVATIONS

6650 Dixie Hwy
LOUISVILLE, KY 40243

PLUMPGROUP ARCHITECTURE & ENGINEERING
a division of Plump Engineering Inc.
914 E. KATELLA AVENUE, ANAHEIM, CA 92805
P (714) 385-1835 F(714) 385-1834
www.plumpgroup.com

15 Duplan 1159

RECEIVED
OCT 30 2015
PLANNING &
DESIGN SERVICES