

**PARISTOWN<sup>SM</sup>**

---

A PLACE OF LIFE... ARTFULLY CREATED

## HISTORY OF PARISTOWN

- 1854 Brent Street named after TY Brent
- Land was sold off in small cottage lots
- Brent dies during the Civil War
- 1881 Courier Journal “suburban Village of Paristown”
- Paristown is lost during WW I
- 50% of neighborhood is shuttered
- 50% of the households below 60% AMI

## DEVELOPMENT

- Seven acre \$28M Cultural Arts/Entertainment District
- 1500 parking spaces within a 5 minute walk
- Tour bus staging
- Outdoor stage/festivals/offsite for 5000 people
- Restaurants/brewery/sweet shop/library/bars/coffee shop

# PARISTOWN



BARRET AVENUE

BRENT STREET

VINE STREET

SWAN STREET

STONEWARE ALLEY

STAGE

MERCY WAY

STONEWARE

KCA FACILITY

GOODWOOD BREWING

OFFICES/  
RESTAURANT

MARKETPLACE

CSX RAIL LINE  
SOUTH FORK BEARGRASS CREEK

THE  
CAFE

EAST BROADWAY

FUTURE



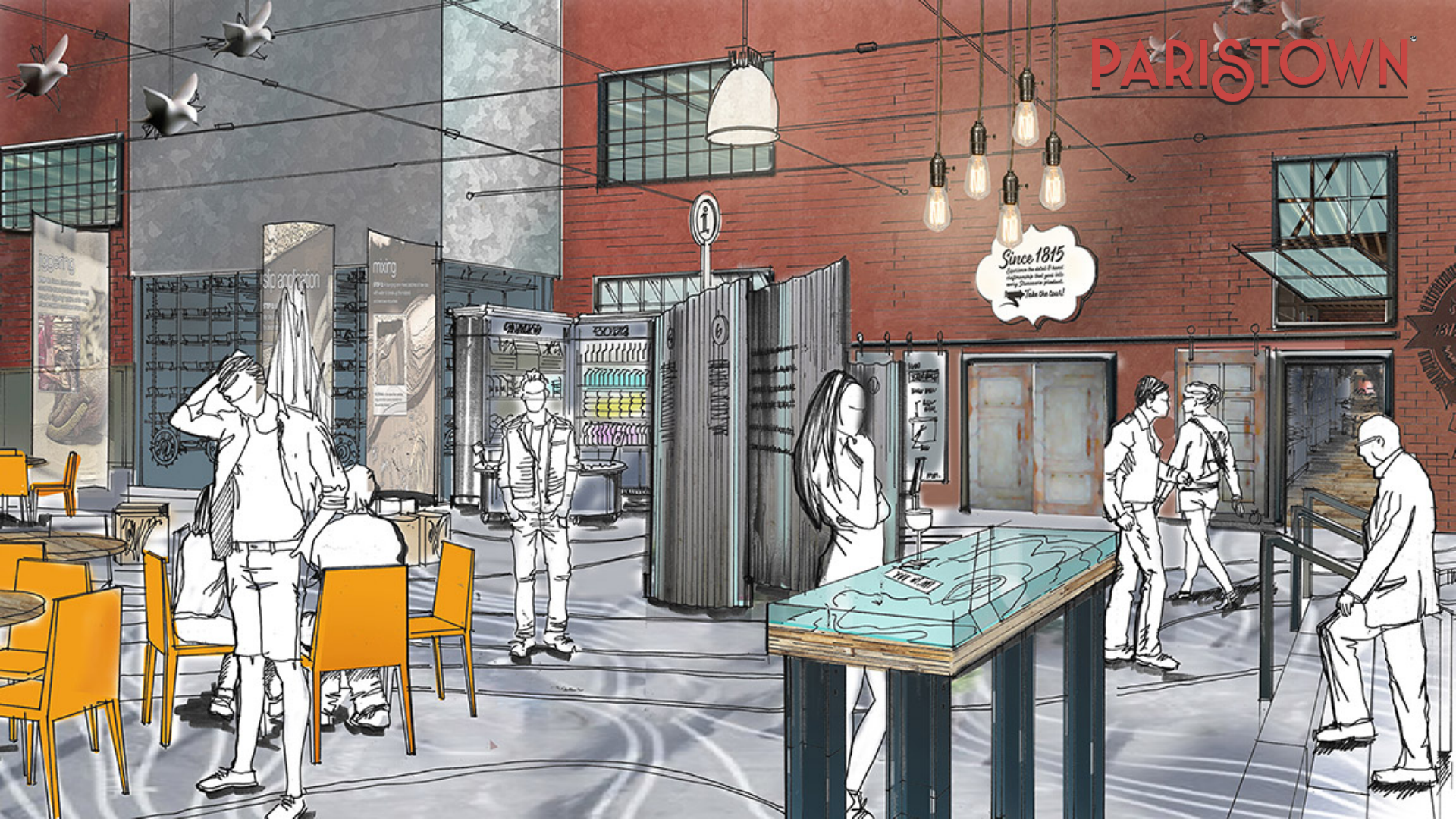
PARISTOWN  
SITE

VICINITY MAP

**PARISTOWN**<sup>®</sup>



# PARISTOWN



Since 1815

Experience the oldest brand  
inspiring the best you will  
only discover for real.

Take the Deal!



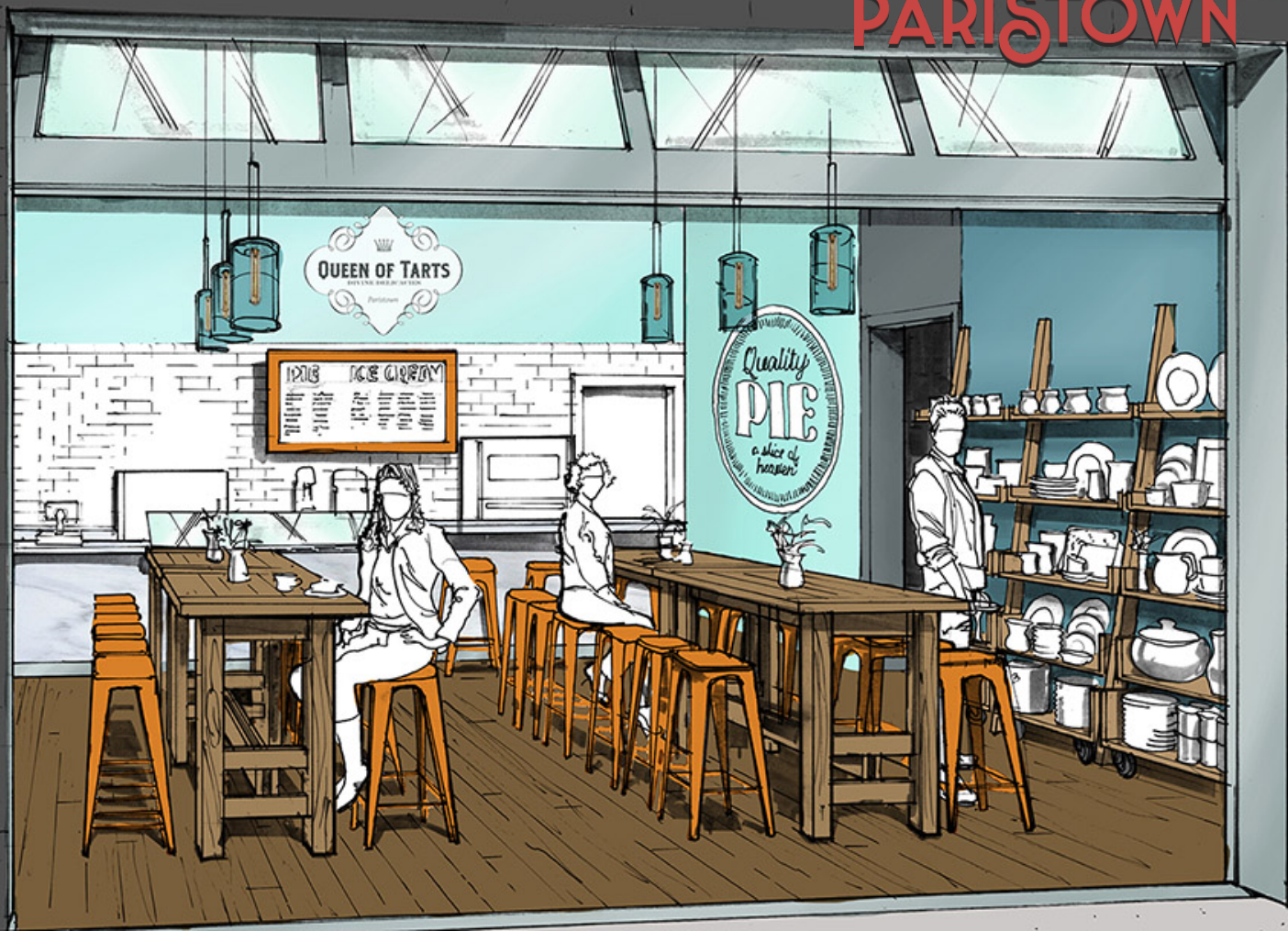
PARISTOWN™







PARISTOWN



# PARISTOWN





PARISTOWN™



PARISTOWN<sup>®</sup>





*The Kentucky Center at Paristown* will support local, regional and national artists in creating unique and immersive performance experiences for audiences and artists alike.

Envisioned and operated by The Kentucky Center for the Performing Arts, *The Kentucky Center at Paristown* is a destination for national touring bands, collaborative projects, new works and nontraditional performance experiences.



### **The Venue**

The project is a \$12 million, 28,000 sq. ft. venue accommodating up to 2000 patrons. The venue will include an adjacent green space area that will be activated with public events and festivals.

### **Promoting Economic Development, Workforce Development & Cultural Tourism**

*Kentucky Center at Paristown* will have a positive cultural and economic impact-- creating opportunities for nearby businesses and further **fueling economic development, talent attraction** and **tourism** to Metro Louisville and the Commonwealth.

### **Audience Builder**

*Kentucky Center at Paristown* will build new audiences for the Kentucky Center, reaching a younger demographic through unique and diverse programming.

### **Breaking Ground**

*Kentucky Center at Paristown* is expected to break ground in 2017 with an aggressive target completion date by spring, 2019.

**PARISTOWN<sup>SM</sup>**

---

A PLACE OF LIFE... ARTFULLY CREATED